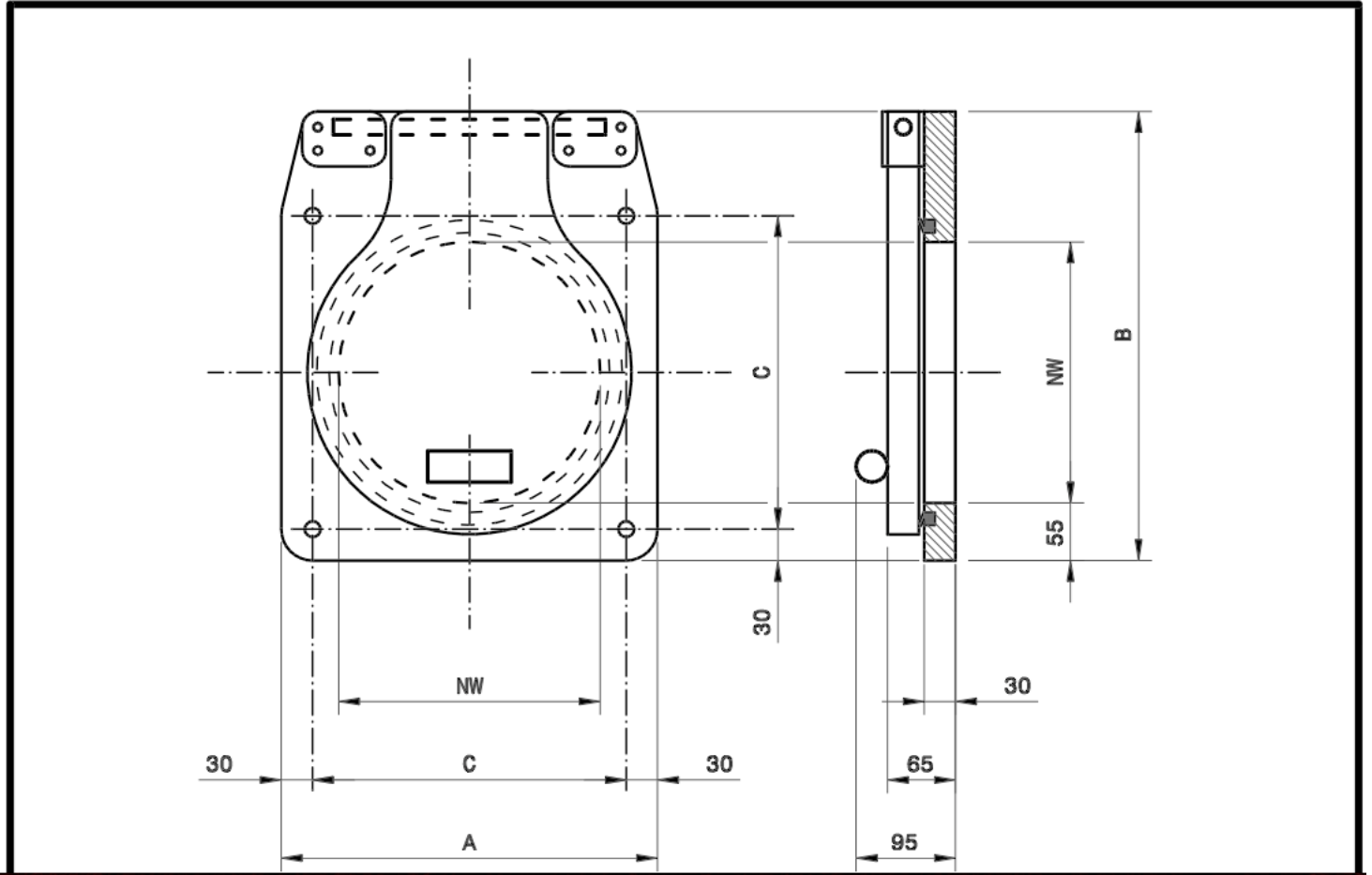


FLAP VALVE 125MM-300MM TYPE O

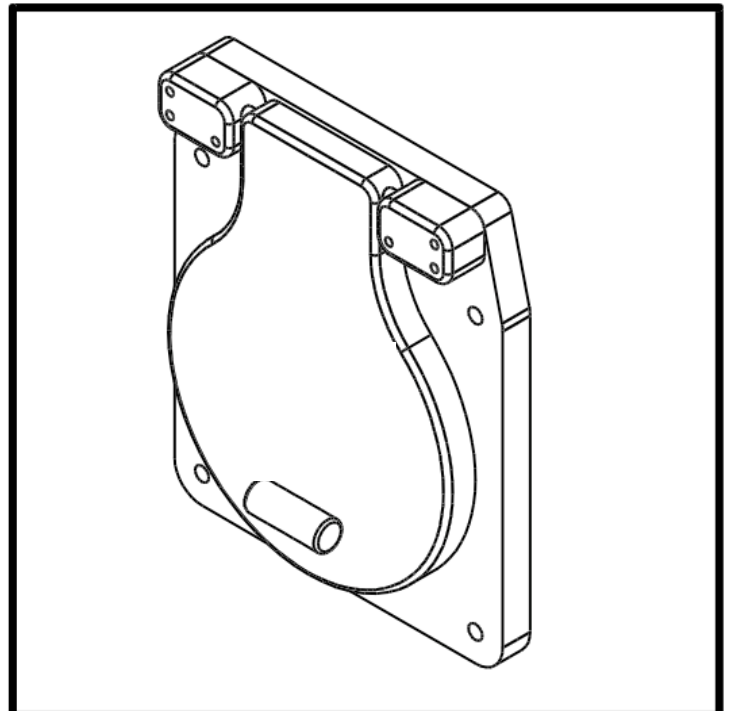


NW	A	B	C	weight
125	235	295	175	4 kg.
150	260	325	200	4 kg.
200	310	378	250	5 kg.
250	360	430	300	7 kg.
300	410	480	350	8 kg.

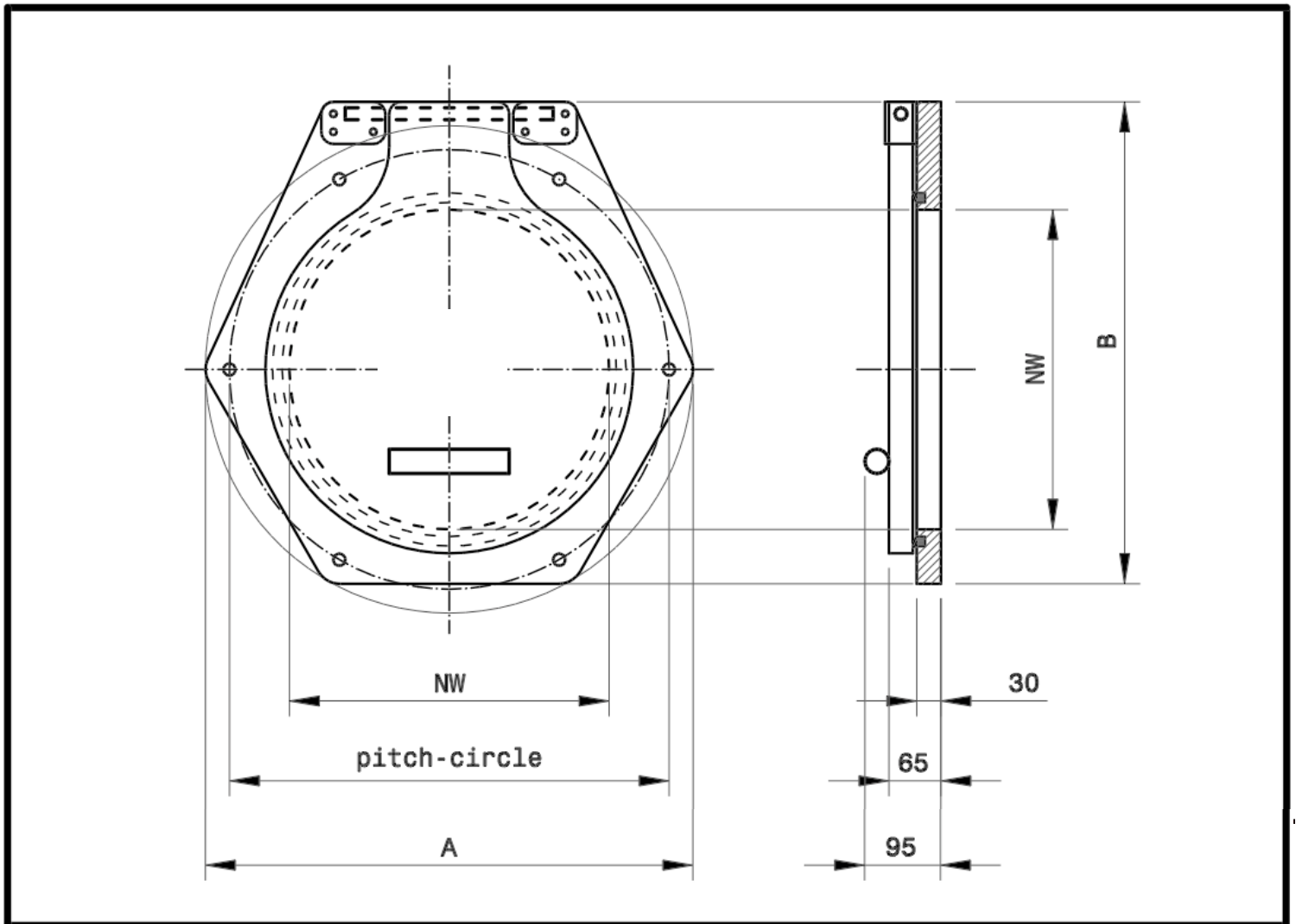
Material specification

Frame - HDPE-300
 Valve - HMPE-500
 Sealing - EPDM
 Valve axle - Stainless AISI316
 Bolts/nuts - A4

Mounting : 4x anchor M12
 Max. pressure : 1 bar (14.5 psi)



FLAP VALVE 700mm-1000mm TYPE 0

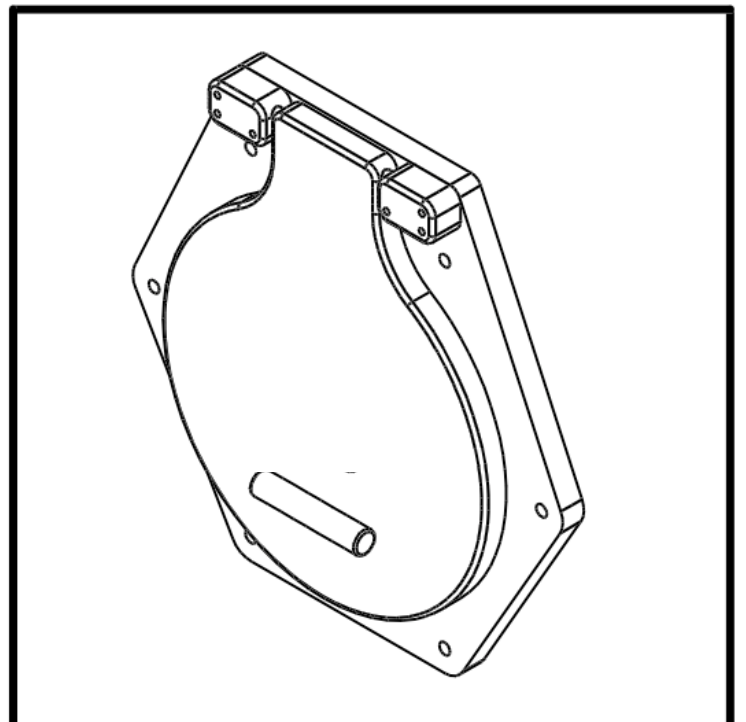


NW	A	B	pitch-circle	weight
400	Ø610	603	Ø550 (6x Ø15)	11 kg.
500	Ø710	699	Ø650 (6x Ø15)	14 kg.
600	Ø810	824	Ø750 (8x Ø15)	18 kg.

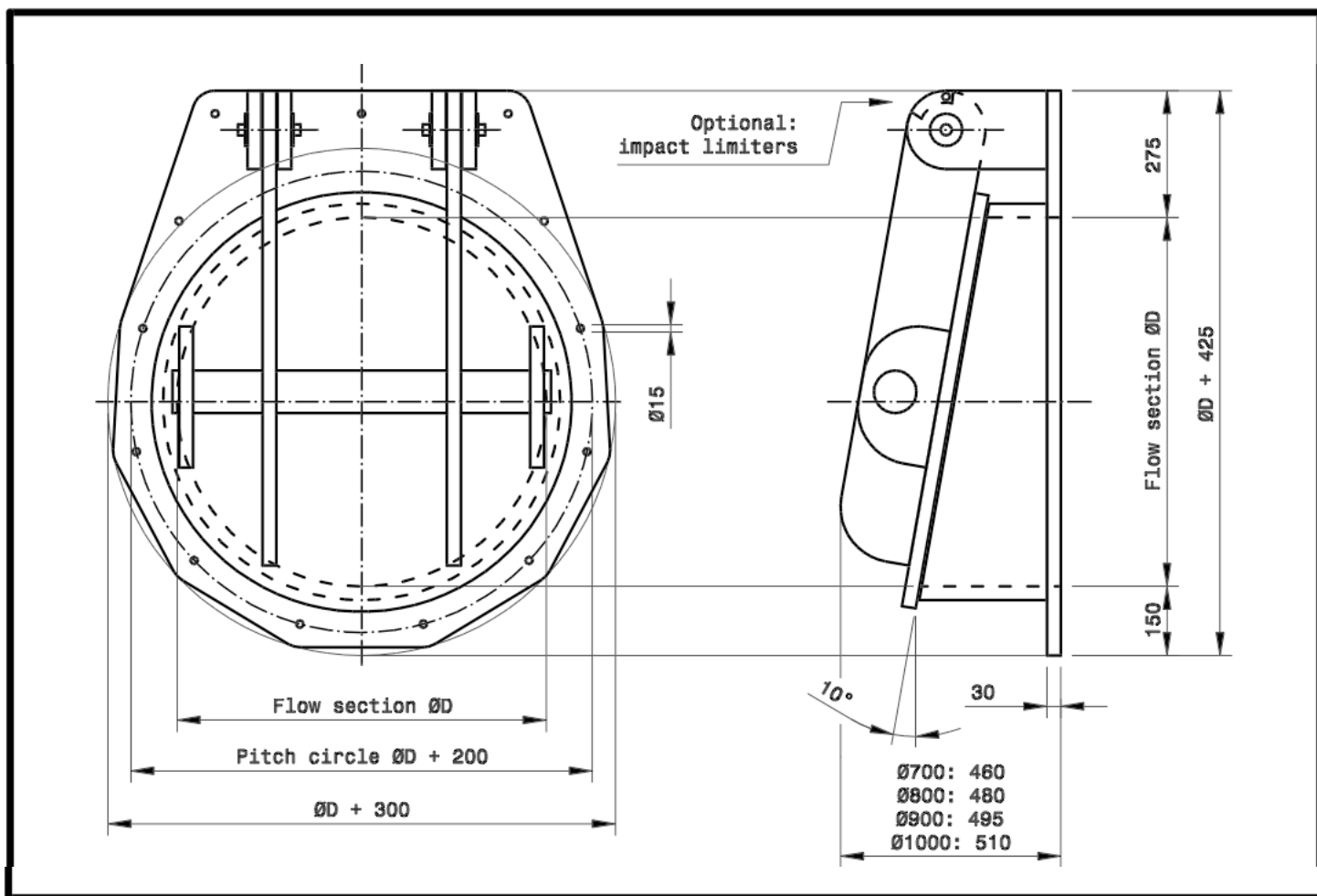
Material specification

Frame	- HDPE-300
Valve	- HMPE-500
Sealing	- EPDM
Valve axle	- Stainless AISI316
Bolts.nuts	- A4

Mounting	: anchors M12
Max. pressure	: 0.6 bar (8.7 psi)



FLAP VALVE 700mm-1000mm TYPE 0



<u>ØD</u>	<u>Mounting</u>	<u>Weight</u>
Ø700	13x Ø15 for M12	55 kg.
Ø800	13x Ø15 for M12	60 kg.
Ø900	13x Ø15 for M12	75 kg.
Ø1000	16x Ø15 for M12	85 kg.

Material specification

Frame and valve - HDPE-300
 Sealing - EPDM
 Valve axles - Stainless AISI316

Supplemental data

Max. pressure : 0.6 bar (8.7 psi)
 An air bleed connection and impact limiters can be supplied when the valve is used as a pump discharge valve.

