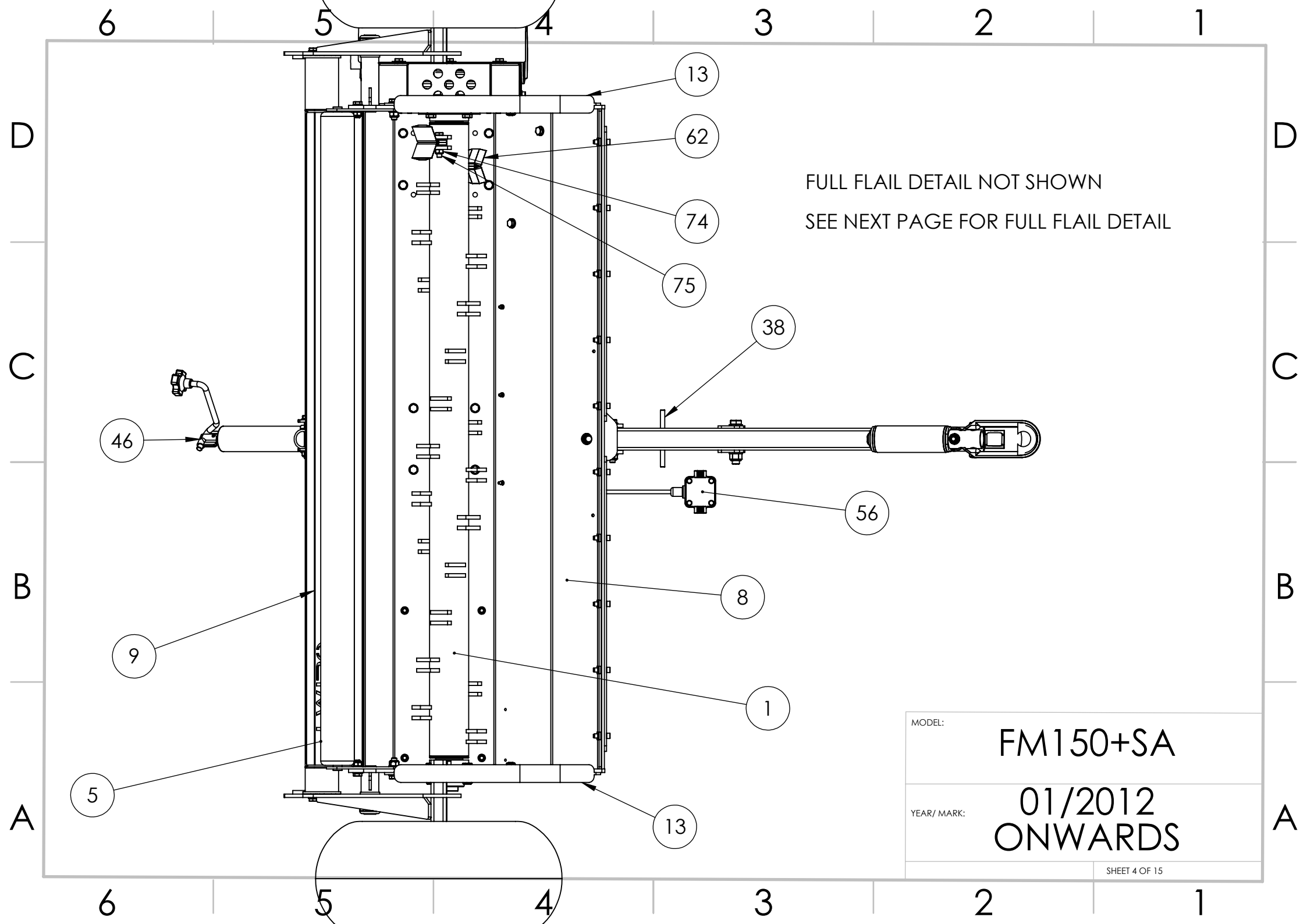


MODEL: FM150+SA

YEAR/ MARK: 01/2012 ONWARDS



MODEL: **FM150+SA**

YEAR/ MARK: **01/2012  
ONWARDS**

6

5

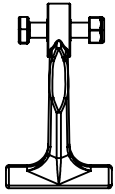
4

3

2

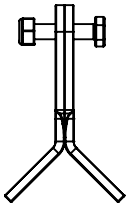
1

## FM HAMMER FLAIL ASSEMBLY



ITEM NO.	PART NUMBER	DESCRIPTION	QTY.
800	FM-HF	HAMMER FLAIL DROP FORGED Rev B	1
801	BB-01	BLADE BUSH	1
802	M10-50HB	M10 x 50 Hex Head Bolt	1
803	M10-000NN	M10 NYLOCK NUT	1

## FM STANDARD FLAIL ASSEMBLY



ITEM NO.	PART NUMBER	DESCRIPTION	QTY.
900	FM-SB	STANDARD FLAIL BLADE, TO SUIT FM SERIES	2
901	M10-50HB	M10 x 50 Hex Head Bolt	1
902	M10-000NN	M10 NYLOCK NUT	1

## NO. FLAILS FITTED

FM120  
STANDARD = 44  
HAMMER = 22

FM150  
STANDARD = 52  
HAMMER = 26

MODEL:

FM150+SA

YEAR/ MARK:

01/2012  
ONWARDS

SHEET 5 OF 15

6

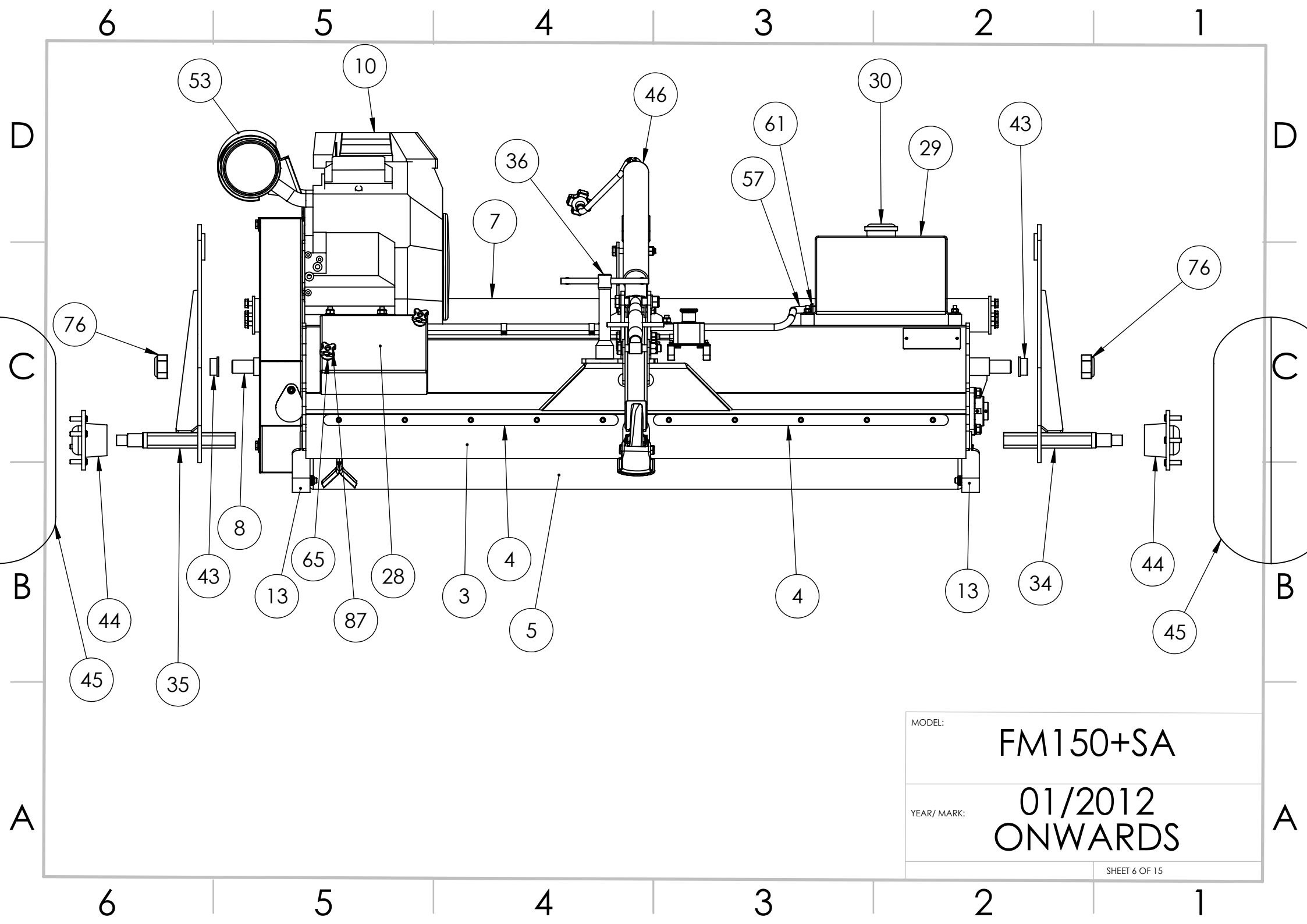
5

4

3

2

1

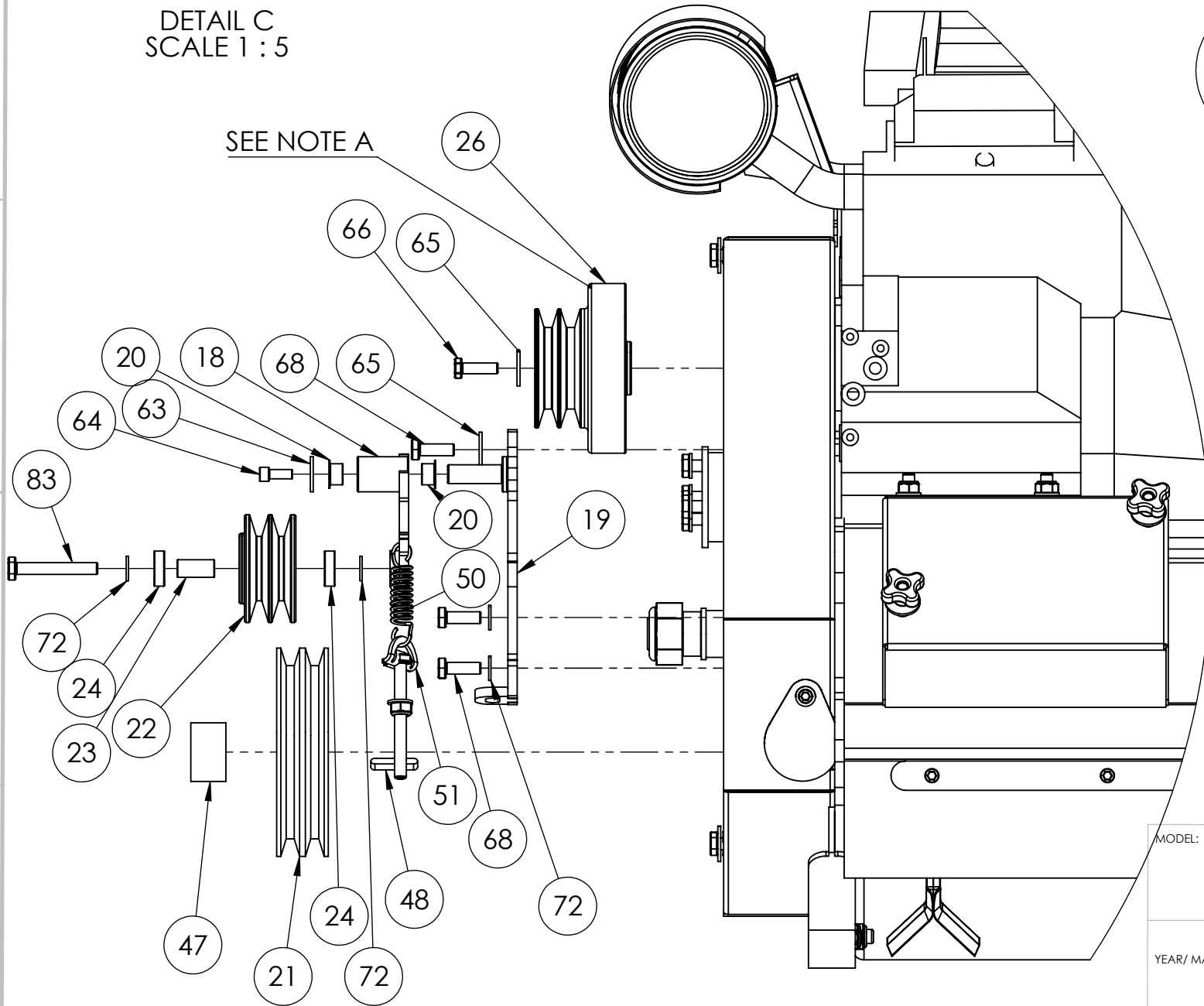


MODEL: FM150+SA

YEAR/ MARK: 01/2012 ONWARDS

DETAIL C  
SCALE 1 : 5

SEE NOTE A

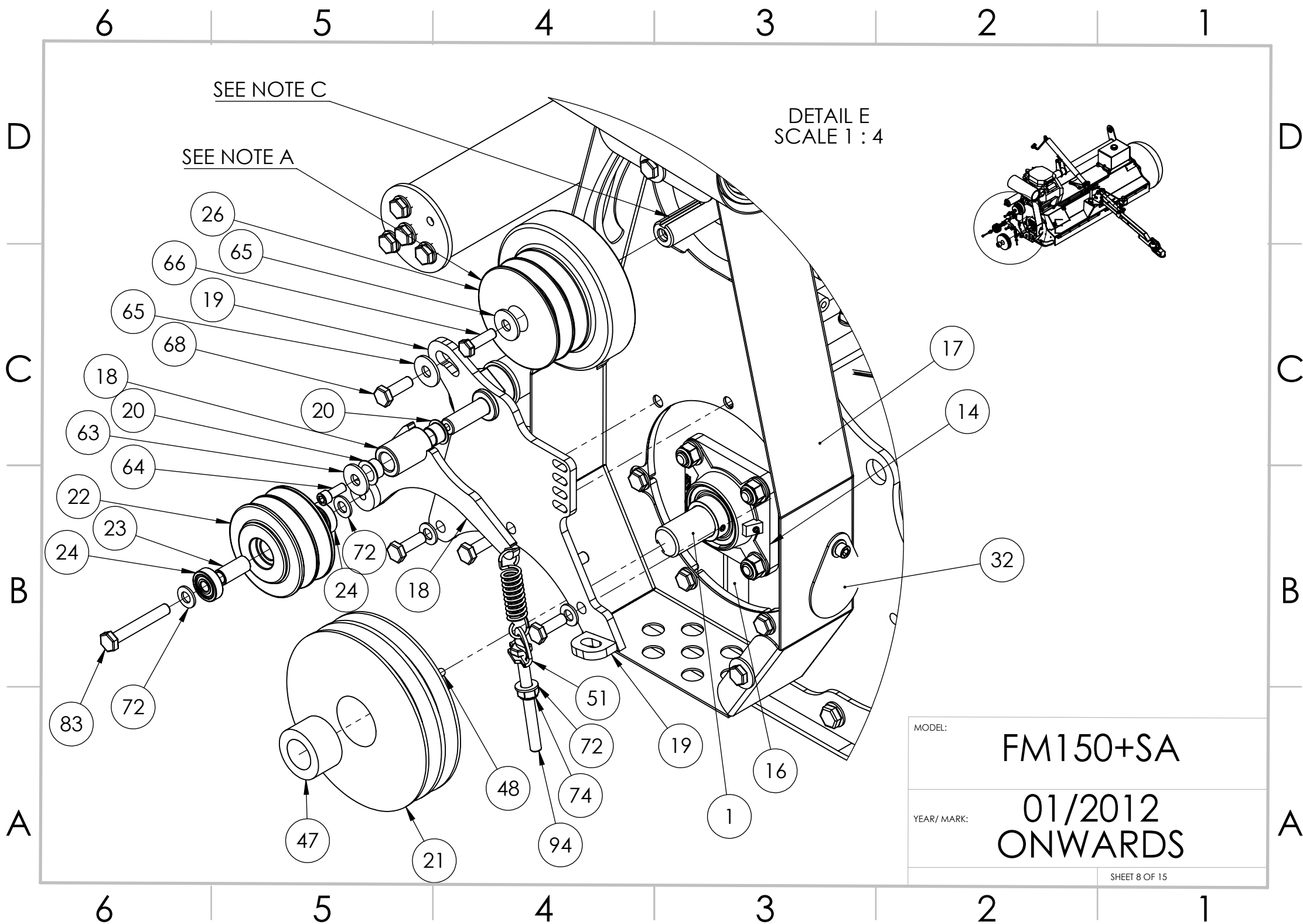


MODEL:

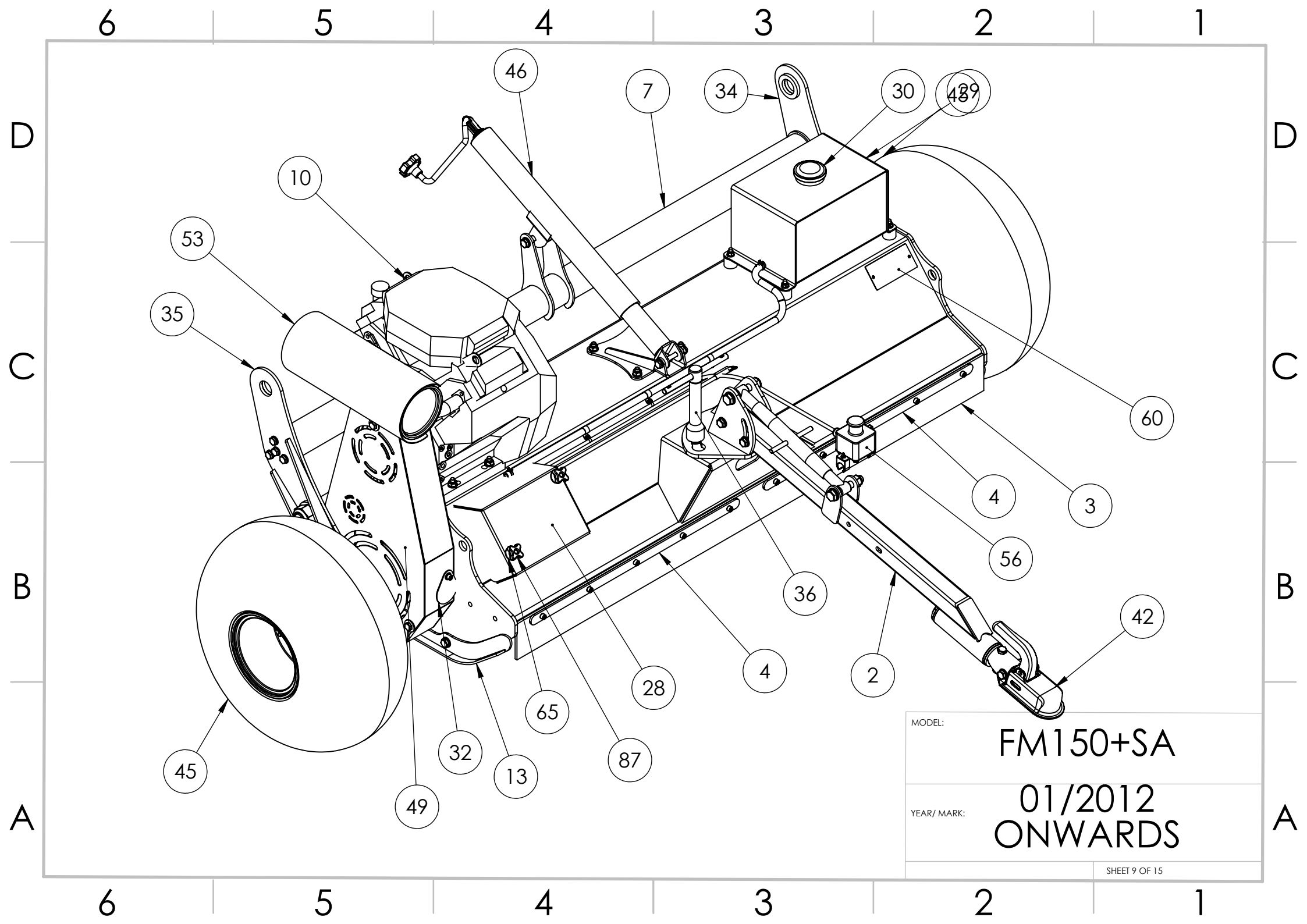
FM150+SA

YEAR/ MARK:

01/2012  
ONWARDS







MODEL: FM150+SA

YEAR/ MARK: 01/2012 ONWARDS

ITEM NO.	PART NUMBER	DESCRIPTION	QTY.
1	FM150-MRA	MAIN ROTOR ASSEMBLY, FM150	1
2	DBA-900	DRAWBAR 900MM LONG 50X50X5MM BOX ASSEMBLY	1
3	RBR-1500	RBR-1500, RUBBER STRIP, 100MMX5MM INSERTION, PLAIN RUBBER, 1500MM LONG	1
4	FM150-011	FIXING STRIP, FM150, REV B	2
5	FM150-RRA	REAR ROLLER ASSEMBLY, FM150, OA=1480, OF=1500	1
6	AD3025M820-1.5	RUBBER MOUNT WAISTED AD3025 M8X20MM THREAD	4
7	FM150-RBA	REAR BAR ASSEMBLY, FM150	1
8	FM150-MDA	MAIN DECK ASSEMBLY, FM150	1
9	FM150-RSA	REAR SKIRT ASSEMBLY, FM150	1
10	GX630RH-QZE4	HONDA GX630RH-QZE4 21HP HORIZONTAL SHAFT ENGINE	1
11	FM-HAM	HEIGHT ADJUSTER MOUNT	1
12	FM-RGA	ROTOR GUARD ASSEMBLY, FM SERIES	4
13	FM-SMA	SKID MOUNT ASSEMBLY	2
14	SF30-RHP	30MM ID HOUSED BEARING	2
15	FM-DSB	DRIVEN SIDE BEARING MOUNT, FM	1
16	FM120-002	COVER PLATE, 2MM	1
17	FM-BGA	BELT GUARD ASSEMBLY, FM SERIES	1
18	FM-TAA	TENSIONER ARM ASSEMBLY	1
MODEL:			FM150+SA
YEAR/ MARK:			01/2012 ONWARDS
			SHEET 10 OF 15

6

5

4

3

2

1

ITEM NO.	PART NUMBER	DESCRIPTION	QTY.
19	FM-TBA	TENSIONER BASE ASSEMBLY	1
20	MFM-1618-12	IGUS BEARING 16MM ID, 18MM OD, 12MM THICKNESS TOP HAT STYLE MFM-1618-12	2
21	SPB170-2	SPB170/2 PULLEY, 2 GROOVE, 170MM PCD, B SECTION TO SUIT 2012 TAPERLOCK	1
22	SPB90-2	PULLEY, 2 GROOVE, 90MM	1
23	SPB90-2 Spacer	SPACER TO SUIT SPB90/2 PULLEY	1
24	6200-2RSH	BEARING, BALL, 10MM ID 30MM OD	2
25	FM120-004	CLUTCH SPACING WASHER	1
26	K125-1435	CLUTCH, 145MM OD, 4" 2 GROOVE PULLEY, 1" INPUT SHAFT	1
27	FM-BLA	BATTERY LOWER ASSEMBLY	1
28	FM-BUA	BATTERY UPPER ASSEMBLY	1
29	FM-FTA	FUEL TANK ASSEMBLY, FM	1
30	FCM50651	FUEL CAP VENTED 50MM	1
31	518901026a514	BATTERY POWERSPORTS AGM 12V 18AH	1
32	FM120-071	BELT GUARD GREASE POINT COVER	1
33	FM-DMA	DRAWBAR MOUNT ASSEMBLY, FM	1
34	FM-SAL	STANDARD AXLE ASSEMBLY LH	1
35	FM-SAR	FM STANDARD AXLE ASSEMBLY, RH	1

MODEL:	<b>FM150+SA</b>
YEAR/ MARK:	<b>01/2012 ONWARDS</b>
<small>SHEET 11 OF 15</small>	

6

5

4

3

2

1

D

D

C

C

B

B

A

A

6 5 4 3 2 1

ITEM NO.	PART NUMBER	DESCRIPTION	QTY.
36	SHS-20 (ASSY)	SWIVEL MOUNT 20MM, ASSEMBLY	1
37	BTC-5050T	BOX CAP THICK WALL 3-5MM TO SUIT 50X50	1
38	TL-1902000GP	TOP LINK CAT 0	1
39	SH-002	SWIVEL HITCH BUSH	2
40	SH-003	SWIVEL HITCH WASHER 44MM ID 60MM OD 5MM THICK	1
41	SH-001	SWIVEL HITCH DRAWTUBE ASSEMBLY	1
42	8802429X	8802429X COUPLING 50MM BALL TO SUIT 43MM TUBE	1
43	MFM-3038-20	IGUS BEARING 30MM ID, 38MM OD, 20MM THICKNESS TOP HAT STYLE MFM-3038-20	2
44	ADR-200H	HUB 4X4" SSP	2
45	WAT-22118W	22X11X8 WHEEL ASSEMBLY 4X4" PCD	2
46	HAI-6091	Height Adjustment Jack Rev c	1
47	2012-30	TAPERLOCK 30MM ID TO SUIT 2012 SOCKET	1
48	68858740	FEATHERED KEY 8 X 7 X 40MM	1
49	FM120-001	BELT GUARD COVER, REV E	1
50	E07501052500M	SPRING, 19MM OD, 63MM FREE LENGTH, 10N/MM	1
51	FM120-003	TENSIONER SPRING CLIP	1

MODEL:	<b>FM150+SA</b>
YEAR/ MARK:	<b>01/2012 ONWARDS</b>
<small>SHEET 12 OF 15</small>	

6 5 4 3 2 1

D

D

C

C

B

B

A

A

ITEM NO.	PART NUMBER	DESCRIPTION	QTY.
52	BX41	BELT, COGGED, BX41	2
53	06183-ZCK-8000	MUFFLER TO SUIT HONDA GX630RH	1
54	BCB770	BATTERY CABLE, BLACK, 770MM, 16MM DIA, TERMINATED ENDS ON 8MM TERMINALS, HEAT SHRINK COVERS	1
55	BCR770	BATTERY CABLE RED, 770MM, TERMINATED ENDS	1
56	FM-ESA	EMERGENCY STOP ASSEMBLY, TO SUIT FM SERIES	1
57	BSAU-8-100	FUEL HOSE, 8MM ID, 15MM OD, RUBBER, PER M	1
58	1862	NYLON P CLIP. CLEAR, 5.5MM CABLE DIA	2
59	1866	NYLON P CLIP. CLEAR, 15MM CABLE DIA	3
60	SERIALPLATE	SERIAL PLATE CHAPMAN	1
61	DW-14.8	DOUBLE WIRE SPRING, BZP, 14.5-15.1	2
62	FM-SB	STANDARD FLAIL BLADE, TO SUIT FM SERIES	4
63	M8-000PWG	M8 Plain Washer Form G	1
64	M8-20CS	M8 x 20 Cap Head Set Screw	2
65	M10-000PWG	M10 Plain Washer Form G	8
66	3-8 24 x 1 1-4 UNF	3-8 x1 1-4 UNF 24 Hex Head Bolt	1

MODEL:	FM150+SA
YEAR/ MARK:	01/2012 ONWARDS
SHEET 13 OF 15	

ITEM NO.	PART NUMBER	DESCRIPTION	QTY.
67	M10-20HB	M10 x 20 Hex Head Bolt	6
68	M10-30HB	M10 x 30 Hex Head Bolt	24
69	M12-90HB	M12X90MM HEX HEAD BOLT	3
70	M12-000NN	M12 NYLOCK NUT	17
71	M12-000PW	M12 PLAIN WASHER FORM A	25
72	M10-000PW	M10 PLAIN WASHER FORM A	52
73	M10-80HB	M10 x 80 Hex Head Bolt	1
74	M10-000NN	M10 NYLOCK NUT	20
75	M10-50HB	M10 x 50 Hex Head Bolt	6
76	M30-000NN	M30 Nylock Nut	2
77	M12-60HB	M12X60 HEX HEAD BOLT	1
78	M12-70HB	M12X70 HEX HEAD BOLT	1
79	M16-90HB	M16 x 90 Hex Head Bolt	2
80	M16-000PW	M16 plain Washer	6
81	M16-000NN	M16 Nylock Nut	3
82	M16-50HB	M16 x 50 Hex Head Bolt	1
83	M10-70HB	M10 x 70 Hex Head Bolt	1
84	M8-000PW	M8 Plain Washer From A	11
85	M8-000NN	M8 NYLOCK NUT	9

MODEL:

**FM150+SA**

YEAR/ MARK:

**01/2012  
ONWARDS**

6

5

4

3

2

1

ITEM NO.	PART NUMBER	DESCRIPTION	QTY.
86	M10-120HS	M10 x 120 Hex Head Set Screw	2
87	F188-40 M10	HANDWHEEL M10 THROUGH THREADED 40MM 4 LUG	2
88	M8-000LN	M8 Lug Nut	10
89	M8-30CS	M8 x 30 Cap Head Set Screw	10
90	M12-40HB	M12 x 40 Hex Head Bolt	10
91	M12-30HB	M12 x 30 Hex Head Bolt	2
92	FM120-016	ROLLER MOUNT	2
93	M10-000CN	M10 Cage Nut	3
94	M10-100HS	M10 x 100 Hex Head Set Screw	1
95	M5-20PP	M5 x 20 Pan Head Pozi Screw	3
96	M5-000PW	M5 Plain Washer Form A	6
97	M5-000NN	M5 Nylock Nut	3

## NOTES:

- A. UP TO 02/2018 CLUTCH HAS AN 125MM OUTSIDE DIAMETER. FROM 02/2018 CLUTCH HAS A 145MM OUTSIDE DIAMETER. 145MM DIA CLUTCHES CANNOT BE FITTED TO MACHINES OLDER THAN 02/2018 WITHOUT MODIFICATION. IN THIS CASE A 125MM OD CLUTCH CAN BE SUPPLIED.
- B. MACHINES PRE 01/2017 USE RM-DMA DRAWBAR MOUNT & SHS-12(ASSY) SWIVEL HITCH SCREW ASSEMBLY
- C. KEYWAY SUPPLIED WITH ENGINE SO NOT LISTED AS SEPERATE PART. REPLACEMENTS CAN BE SUPPLIED, PLEASE CALL.
- D. VARIOUS TREAD PATTERNS ARE SUPPLIED, IF PURCHASING A SINGLE REPLACEMENT AND IT IS REQUIRED TO MATCH THEN A PHOTO OF THE CURRENT TREAD PATTERN WILL NEED TO BE SUPPLIED.

MODEL:

FM150+SA

YEAR/ MARK:

01/2012  
ONWARDS

ALL PART NUMBERS / DRAWINGS SUPPLIED ARE FOR GENERAL REFERENCE ONLY.  
MODIFICATIONS / CHANGES MAY BE MADE AT ANY TIME AT OUR DISCRETION.

6

5

4

3

2

1