

W&H PEACOCK

AUCTIONEERS & VALUERS

JUNE SALE OF

*Antique Furniture & Collectors' items,
Jewellery & Watches*

VIEWING

**Antique Furniture & Collectors' items,
Jewellery & Watches**

Friday 31st May – 9am to 8pm,
Saturday 1st June – 9am to 4pm,
Thursday 6th June – 9am to 6pm,
Morning of sale from 9am

AUCTION

Antique Furniture & Collectors' items,

Friday 7th June 2019
Commencing at 11.00am

Jewellery & Watches

Friday 7th June 2019
Commencing at 4.00pm

LIVE INTERNET BIDDING

the saleroom

The home of art & antiques auctions

CATALOGUES

£5 by post, online at

www.peacockauction.co.uk

W&H PEACOCK

AUCTIONEERS & VALUERS

Antique & Collectors' Items
Valuation Day
Saturday 8th June 2019

Commencing 10am – 2pm

NO APPOINTMENT NECESSARY.

Bring along items for FREE auction advice without obligation. Our team of valuers are happy to advise on all Antique Furniture, Pictures, Ceramics & Glass, Silver, Metalware, Boxes and Caddies, Militaria, Books & Ephemera, Wine & Spirits, Collectable Toys, Mid Century Design, other Collector's Items, Watches & Jewellery.

TO BE HELD AT

Milton Ernest
Garden Centre

Radwell Road, Milton Ernest, Bedford, Bedfordshire MK44 1SH

Auction Entries Invited
peacockauction.co.uk

*Furniture, Rugs
& Works of Art*



Furniture, Rugs and Works of Art

1

An 18th century-type oak panelled duodarn with an arrangement of three small and two large doors, with three drawers, on square straight stiles, w. 152 cm
£200 - £300

2

An ebonised sideboard with three doors over three drawers on square straight stiles, decorated in the Chinese Provincial manner, l. 220 cm
£200 - £300



Lot 3

3

A Victorian walnut Canterbury with a single drawer on turned legs with castors
£80 - £120

4

A Victorian mahogany breakfront twin-pedestal sideboard, the single drawer flanked by a pair of cupboards with column pilasters, on scrolled and claw feet, l. 197 cm
£200 - £300



Lot 2



Lot 5

5

An Edwardian and later upholstered mahogany framed two-fold screen, the centre with a pair of fold-out shelves over Art Nouveau-style slats, h. 126 cm
£40 - £60

6

A Georgian and later oak chest of two short over three long graduated drawers, on later block feet, w. 78 cm
£80 - £120

7

A 19th century mahogany and crossbanded chest of two short over three long graduated drawers, on bracket feet, w. 100 cm

£100 - £150



Lot 8

8

A Charles II and later oak chest of four long graduated drawers with geometric moulding, on bracket feet, w. 88 cm

£400 - £600



Lot 9



Lot 13

9

An 18th century and later oak chest of two short over three long graduated drawers with geometric moulding, believed to be the top section of a chest-on-chest, w. 109 cm

£100 - £150

10

Two 19th century mahogany toilet mirrors

£50 - £80

11

A 19th century mahogany 'Scotch' chest with a narrow bombe drawer over three deep drawers and three long graduated drawers, flanked by a pair of barley twist pilasters, on a plinth base, w. 124 cm

£80 - £120

12

A Georgian mahogany drop-leaf dining table with square straight gate-legs, max. l. 136 cm

£60 - £80

13

A pair of 20th century Indian hand knotted rugs with blue grounds, geometric and floral motifs within matching bands, 98 x 75 cm each

£80 - £120

14

A Victorian mahogany tilt-top circular supper table on a turned support and three splayed legs with castors, d. 103 cm

£60 - £100



Lot 17

15

A Victorian mahogany and button upholstered nursing chair on turned front legs with castors

£50 - £80

16

A set of six late 19th century mahogany and upholstered dining chairs on turned front legs, in the manner of Gillows

£120 - £150

17

A 19th century mahogany extending dining table, with three fitted leaves, on turned baluster legs with castors, 136 cm to 298 cm, w. 126 cm

£500 - £800



Lot 15



Lot 22

18

A French walnut and crossbanded writing table with two frieze drawers on barley twist supports, joined by a matching cross-stretcher, in the Louis XV manner, w. 101 cm *£200 - £300*

19

A figural ebonised torchere in the 19th century Venetian manner, the shaft in the form of a boy wearing a turban and clutching grapes and a knife, on a tripod rococo base, h. 73 cm *£50 - £80*



Lot 19

20

An 18th century-type cherry wood wake/hunt table, the drop-leaf surface on tapering circular legs with pad feet, l. 213 cm *£200 - £300*

21

A Victorian mahogany library table on turned baluster legs with castors, w. 151 cm *£200 - £300*

22

An 18th century and later oak and crossbanded coffer on bracket feet, w. 134 cm *£200 - £300*



Lot 20



Lot 18

23

A late 19th century mirror, the gilt frame enclosing a rectangular plate below a marquetry bird, 105 x 32 cm
£30 - £50

24

A late 17th/early 18th century oak six-plank hutch, l. 116 cm
£100 - £150

25

A Victorian mahogany and button upholstered bedstead
£150 - £200

26

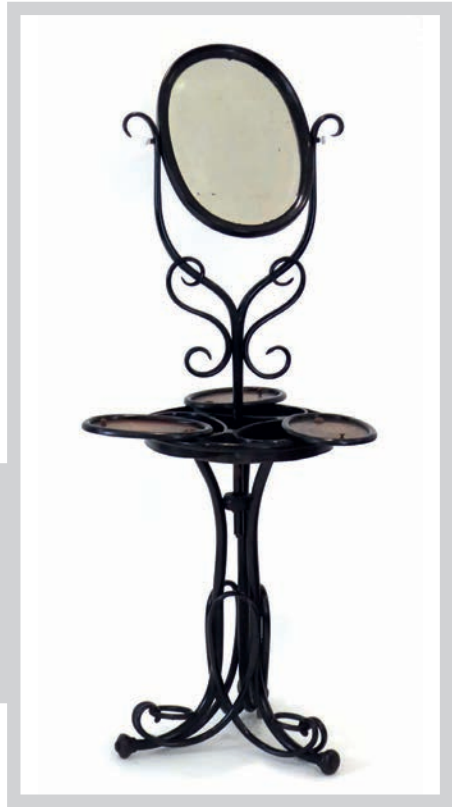
A Victorian mahogany fire surround with a gallery and mirrored overmantle, carved with lion masks and Bedfordshire figures, w. 153 cm, Arthur Phillips label verso
£100 - £150

27

Attributed to Thonet, a 19th century ebonised and bentwood dressing stand, the adjustable oval mirror over three covered compartments on three matching feet *Thonet catalogues show a matching design which included a pair of sconces. See lot 2627 in Christies sale on 15th June 2004
£2000 - £2500

28

An 18th century oak dresser with three drawers over three doors on block feet, l. 178 cm
£250 - £300



Lot 28



Lot 29

29

A set of five Hepplewhite-type mahogany and upholstered dining chairs *£120 - £150*

30

A 19th century mahogany twin-pedestal dining table, with one fitted leaf, on turned columns each with three splayed and reeded legs on castors, l. 156 cm to 213 cm *£200 - £300*

31

A Sarouk Persian runner with a red ground, blue floral centre and matching bands, 556 x 77 cm, with certification *£100 - £150*

32

A late 19th/early 20th century Persian rug, the red and blue ground decorated with animals, geometric forms and abstract foliage, within matching bands, 237 x 160 cm *£200 - £300*

33

A cast iron fire back, basket and dogs
*By repute this was taken from the CMC Building in Belgravia designed by Edwin Lutyens *£200 - £300*



Lot 32



Lot 33



Lot 34

34

A 19th century rosewood and button upholstered armchair with foliate apron, scrolled legs and matching feet *£150 - £200*

35

A Victorian mahogany and button upholstered fireside armchair with scrolled arms, and matching front legs with castors *£80 - £120*

36

A pair of Victorian mahogany hall chairs, the backs with circular sections inset with painted birds *£80 - £120*

37

An Edwardian mahogany and upholstered settle *£80 - £120*



Lot 38

38

A Victorian oak and carved prie die with scrolled supports and a decorative apron, the back being also carved *£100 - £150*

39

A Georgian mahogany and crossbanded lowboy with a single frieze drawer over a slightly shaped apron, on four square straight legs, w. 74 cm *£100 - £150*

40

An Edwardian mahogany and upholstered 'enclosed' armchair with turned arms and tapering legs *£40 - £60*



Lot 37

41

A Victorian carved oak cellarette on bun feet
£80 - £120

42

A 19th century marquetry wine table, the tilt-top on a turned column and tripod base, d. 50 cm
£100 - £150



43

A Sheraton Revival rosewood, strung and inlaid envelope-fold card table with a single drawer on cabriole legs joined by a second tier, on castors, w. 59 cm
£100 - £150



Lot 44

44

An Arts & Crafts ash spindle-framed 'Sussex' armchair with a rush seat, in the manner of William Morris
£100 - £150

45

A late 18th/early 19th century mahogany occasional table, the circular tilt-top on a birdcage mechanism, circular straight support and three splayed legs, d. 61 cm
£40 - £60

46

A Victorian mahogany polescreen, the tapestry screen on a straight shaft, barley twist support and tripod base
£60 - £100



Lot 40



Lot 41



Lot 47

47
A Victorian rosewood three-tier what-not-stand with shaped shelves, a single drawer and scrolled supports, w. 53 cm *£100 - £150*

48
An 18th century oak mule chest, the three panelled front over two drawers, on square straight stiles, l. 128 cm *£200 - £300*



Lot 48

49
A Victorian oak sideboard with carved lion mask handles and an arrangement of four drawers and three doors, on a plinth base, l. 182 cm *£100 - £150*

50
For Restoration: a French mahogany and brass mounted side cabinet, the glazed door flanked by a pair of matching panels, on cabriole legs, w. 68 cm *£60 - £100*



Lot 51

51
A contemporary 'Marlborough' lounge chair upholstered in caramel loosely chequered fabric, on oak square legs with castors, by Howard Chairs Ltd. *£300 - £400*

52 - 60
Spare Lots

*Works of Art, Clocks
& Hat Pin Collection*





Lot 64

61

An oak presentation case containing a large group of semi-precious gem stones including lapis lazuli, banded agate, citrine and others

£150 - £200

62

A Napoleon III walnut, kingwood, mother-of-pearl and brass mounted tantalus containing a harlequin part suite of glassware

£300 - £400

63

A Victorian oak and metalwares mounted cigar box, w. 30 cm

£40 - £60

64

A 19th century walnut games compendium, w. 33 cm, the hinged lid enclosing fitted compartments and removable trays including bone chessmen and draughts pieces, a cribbage board, bone dominoes, playing cards, counters and a painted lead horse riding set

£200 - £300





Lot 65

65

A 19th century Fijian throwing club (ula tavatava) with geometric incised decoration to the handle and two nicks to the shaft *£400 - £600*

66

A Tribal throwing club, possibly Kanak, New Caledonia, with a head of mushroom form, later holes to the handle *£400 - £600*



Lot 66

67

A Victorian brass oil lamp with a clear glass reservoir and a moulded glass shade *£40 - £60*

68

A Gensign General Signal & Time Systems clocking-in-machine in a mahogany and copper mounted case, h. 33 cm *£80 - £120*

69

A Townshend & Co. brass spirit kettle and stand, the column entwined with foliage, on three feet, h. 81 cm *£80 - £120*

70

Two 19th century copper and brass mounted coaching horns *By repute the smaller horn was used on the 'Venture' (Newcastle to Shipley Bridge) *£80 - £120*

71

After Guillaume Coustou the Elder, a pair of bronze Marley horses, with a gilt brass finish, h. 43 cm *£300 - £500*

72

A Mactaggart Scott & Co. Ltd. of Edinburgh mahogany and brass mounted ship's wheel *Taken from the 'Stellar Mary', a Baltic trader *£100 - £150*



Lot 71





Lot 73

73

A brass lantern clock, the dial stamped 'William Gray, London' with black Roman numerals, with a later mahogany bracket, h. 38 cm £300 - £400

74

George Addis, London: an 18th century bracket timepiece, the enamelled face with Roman numerals, within a mahogany and brass mounted case on bun feet, h. 42 cm £600 - £800



Lot 75

75

An early 20th century German bracket clock, the brass face with a silvered dial marked 'Camerer Kuss & Co. 56 New Oxford Street London', with two additional dials, the movement marked W&H Son and striking on two gongs, within an oak and brass mounted case, h. 37 cm

£150 - £200



Lot 74



Lot 76

76

T. Moretti: a 19th century hand fan with mother-of-pearl sticks and painted with a Classical fantastical scene, within a glazed presentation case *£120 - £150*

77

A Black Forest carved stand modelled as two bears and a tree, h. 27 cm *£40 - £60*

78

A group of smoking related items including a pipe stand, two snuff boxes and various pipes *£40 - £60*

79

A 20th century brown patinated bronze figure modelled as a boy holding a bow and game, on a marble plinth, unsigned, h. 29 cm *£50 - £80*

80

A 'Handmade Expert' gramophone by Ellis Michael Ginn (E.M. Ginn) in an oak case and stand, with wooden needles and a papier-mache horn overlaid with a faux leather finish *£1000 - £2000*



Lot 81

81

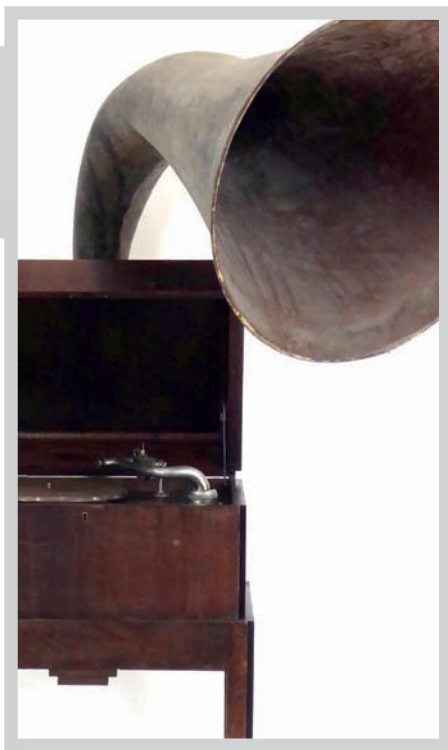
An 18th century eight-day longcase clock, the painted face with date aperture and minute dial, within an oak case surmounted by a mask pediment *£200 - £300*

82

A group of four 19th century oil lamps including one with a pink glass reservoir and another with a brass Corinthian column *£100 - £150*

83

A 1930's 'Beanco' four-spot ceiling light, the brass finished support holding four moulded glass shades of clam-form, d. 37 cm, together with a pair of matching wall-pocket lights *£150 - £200*



84

A 19th century French Chassepot bayonet with a brass handle, fullered blade stamped 1871 and a metal scabbard *£60 - £100*

85

A set of three graduated kukri knives £60 - £80

86

A pair of early 20th century brass, copper and silvered low vases, together with a matching tapering vase and a small dish £40 - £60



87

A pair of 9ct gold football medallions relating to the Bedford Football Association, one awarded to E.L. Atkinson 1932-1933 and the other 1933-1934, approx. 7 grams each, mounted in an oak and glazed case *Manufactured by Vaughtons of Birmingham who designed and created the 1908 London Summer Olympic Games medals £200 - £300

88

Robert Browning: The Pied Piper of Hamelin, designs and decorative orders by Harry Quilter, London, 1898 £30 - £40

89

An early 20th century French clock and garniture, the movement stamped 'Dumoulinneuf A.D. Paris' and striking on a bell, the case decorated in the Eastern manner with a peacock, figures and drops, h. 49 cm £100 - £150

90

A group of six Turkish metalwares and concertina hanging lanterns £300 - £400



Lot 91

91

A 19th century Fijian club inset with bone stars, reduced in length £80 - £120

92

A group of collectables including an Indian 1927-2050 adjustable brass calendar, a silver mounted riding crop, a pair of adjustable technician's spectacles, cap badges and buttons, trench art, a dish 'made from wood from HMS Vanguard', a morse code machine etc. £100 - £150

93

A 19th century Jaques & Son 'In Statu Quo' travelling chess set, in a fitted case, together with another similar travelling chess set £200 - £300

94

A 19th century French mantel clock, the movement stamped 'Lepine Paris' and striking on a bell, the enamelled face with Roman and Arabic numerals, within a gilt metal and porcelain case, h. 24 cm £80 - £120

Lot 90





Lot 93



95

An 18th century gilt metal Arts and Commerce Promoted medallion dated 1770 presented to James Mounsey and numbered 63, d. 4.3 cm, cased, together with a seal and plaque related to the same owner (3)
 *James Mounsey was the first person to bring the seed of the Rheum Palmatum (Rhubarb) plant to the United Kingdom
 £100 - £150

96

Taxidermy: a jay, green woodpecker and a kestrel in a naturalistic setting, h. 50 cm
 £80 - £120



Lot 96

97

A 19th century needle and beadwork picture depicting a pair of children within floral sprays, 29 x 28 cm
 £50 - £80

98

William Pratt: an 18th century thirty-hour longcase clock, the painted face with Roman numerals, floral spandrels and a date aperture, within an oak and crossbanded case of typical form
 £150 - £200



99

An 1883 Ten Shillings postage stamp, cancelled Apr. 3 1884, together with an 1891 One Pound stamp, three partial oval datestamps, and five 1841 One Penny Reds with Maltese X cancellations *£400 - £600*

100

A group of collectables including a silver Sherry label, a pair of gilt metal spectacles, a pair of metalwares cufflinks, a silver fork, two RAF badges, a clay pipe commemorating the Great Exhibition etc. *£80 - £120*

101

A cased Mont Blanc Special Edition 'Collection Princesse Grace de Monaco' ball-point pen enriched with a petal cut pink topaz (heat treated) of approx. 0.39ct, together with the International Service and Guarantee Certificate, dated 2014, Model No. M28913, MKBC4XLR *£150 - £200*

102

A cased set of five limited edition European Architectural Heritage Year gilt medallions, 1975 *£40 - £60*

Lot 101 (part)

103

An early 20th century brass and tole miniature student's microscope, in a fitted case with a group of associated glass slides *£40 - £60*

104

A First World War brass four-drawer telescope, stamped for W.Ottway & Co. Ltd, Ealing London, 1915 *£50 - £80*

105

A 1940's Fairburn Sykes-type trench knife with a metal sheath and leather support, no stamps *£200 - £300*



Lot 106

106

A copper charger decorated in the Arts & Crafts manner with a Tudor Rose, previously silvered, by the Duchess of Sutherland Cripples' Guild, stamped marks, d. 18 cm *£60 - £80*

107

A 1951 London Transport/British Railways Festival of Britain fold-out map, together with a group of unrelated ephemera *£60 - £80*



Lot 105

108

A Parker fountain pen, a base metal fountain pen with a stanhope depicting Bedford scenes, and a silver Bedford & District 1921-1922 Football League medallion *£50 - £80*

109

Max Schirner: a group of Second World War photographs, bearing typed German descriptions and copyright stamps, including Hitler inspecting a tyre (1937), the USS Valley Forge in Portsmouth, a 1937 rally, four of military parades, two of ladies gymnastics, one of Generaloberst Goring and four others, together with a small group of other ephemera relating to the original owner's service in Berlin with the Royal Norfolk Regiment *£100 - £200*



Lot 110

110

A Napoleonic Prisoner-of-War straw-work and tortoise-shell container and cover *£80 - £120*



Lot 111

111

Francois Margaine: a French repeater carriage clock, the movement c. 1875, striking on a gong, bearing the beehive mark, within a gilt brass and five-glass case of typical form *£200 - £300*

112

A group of six 1920's silver and enamelled Masonic jewels, a plain silver jewel, a silver and enamelled R.M.I.G. (Royal Masonic Institute for Girls) jewel, four unmarked jewels and a R.M.I.G. 1954 Year Book *£100 - £150*

113

A Queen's Korea Medal awarded to 22576662 Spr. D.L. Wilden R.E., together with a UN medal *£80 - £120*

114

A First World War pair awarded to 522781 Pnr. F.S. Mathers R.E. including a War and Victory Medal, together with the associated dog tag *£50 - £80*

115

A First World War trio awarded to 9851 Pte. W. Alletson 2/Bedford Regt., together with a 1939-1945 Medal *£40 - £60*

116

A cased Edward VII bronze Coronation Medal, together with a pair of 1902 and 1911 Metropolitan Police Coronation medals, both awarded to P.C. Finn B.Div *£80 - £120*

117

A cased 1166-1966 Bedford Charter Year medallion *£30 - £40*

118

A First World War trio awarded to 8734 Cpl. H. Cullen R.A., together with War and Victory Medals awarded to 201686 Pte. A.J. Crosswell R.Berks R. and a group of cap badges including a diecast Black Watch example *£40 - £60*

119

A Queen Elizabeth I 1569 silver sixpence *£40 - £60*

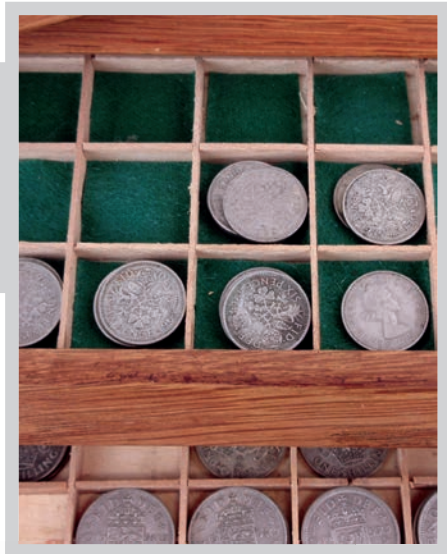
120

A group of twelve coins including 1890 and 1891 crowns, an 1825 shilling, an 1818 shilling, a Roman coin etc. *£50 - £80*

121

A large collection of mainly 20th century coins including an album of 1930's onwards florins, half-crowns and pennies, an oak four-drawer cabinet of sixpence and Maundy money, a group of later crowns, a large quantity of pennies, and two collector's volumes

£100 - £200



122

A group of collectables including a 'Sakerhets Tandstickor' novelty cigarette box, a needle-holder, two AA badges etc.

£40 - £60

123

A mounted set of brass and metalwares cap badges and helmet boards relating to the 44th Esse Regt., the Dorsetshire Regt. etc.

£50 - £80

124

A bound set of German Second World War lithographs after Haut Liska, an official war artist

£40 - £60

125

An album of postcards relating to Emmerdale, Heartbeat, Coronation Street and Eastenders, some bearing fascimile and hand signatures

£30 - £40

126

A pair of Victorian brass barley-twist candlesticks, h. 30 cm

£80 - £120

127

A pair of Arts & Crafts brass candlesticks with rosewood central sections, in the Benson manner

£40 - £60



Lot 127

129

An Iranian gilt metal miniature samovar, h. 25 cm

£40 - £60

130

An Edwardian bamboo walking cane with silver mounts, Birmingham 1902

£20 - £30



Lot 131



Lot 128

128

An Iranian black lacquered pen box decorated with bright colours and a hunting party, l. 30 cm

£30 - £40

131

A Victorian malacca swordstick with brass mounts *£100 - £150*

132

A 19th Century Zulu knobkerrie with a silvered thread handle and later nicks to the shaft *£400 - £600*



Lot 132

133

A 19th century cast iron plaque with gilt highlighted letters 'St. B.F. 1882', believed to be a sign from a school or church, 28 x 22 cm *£60 - £100*

134

A carved and stained 'Utrecht' figure modelled as a saint, h. 61 cm *£80 - £120*

135

A 20th century Eastern copper and silvered charger, d. 39 cm *£30 - £50*

136

A 19th century rosewood and brass mounted writing slope, w. 35 cm, together with a pair of black tole binoculars in a leather case *£40 - £60*

137

An Italian carved wall piece, modelled as a bearded gentleman's head and hat, approx. h. 63 cm *£60 - £80*

138

'Marie-Antoinette Clock': a re-creation of a French 18th century lyre clock with a Hermle movement, authorised by the V&A Museum, by Franklin Mint, h. 39 cm *£40 - £60*

139

A Victorian copper trivet/kettle stand, w. 26 cm *£30 - £40*

140

A 19th century pictorial sampler, initialed J.J., 1845, 29 x 29 cm, within a rosewood and gilt frame *£30 - £40*



141

A Georgian needlework map depicting England and Wales, by Sarah Powell, Beech Hill, 1802, 53 x 42 cm, within a later walnut and gilt frame *£200 - £300*

142

A 19th century Lampe Veritas brass oil lamp with a vaseline glass shade, together with a set of five green glasses *£50 - £80*

143

A group of five late 19th century and later parasols with crook handles *£60 - £100*

144

An Indian silk four-panel prayer rug, 96 x 61 cm *£60 - £80*

145

A late 19th century black lacquered and gilt tray decorated with birds and flowers, 64 x 48 cm

£60 - £80

146

An Edwardian ebonised and gilt metal mounted tray with a beadwork surface depicting a teapot and cups, on gilt bun feet, bearing a paper label dated 1901 verso, 53 x 32 cm

£100 - £150



147

An album of early-to-mid 20th century world postage stamps including China, Japan, Greece, Mexico, Italy, Poland, France, American Air Mail, a large group from the German inter-war period etc.

£100 - £150

148

Dent, 61 Strand, London: a 19th century carriage timepiece, the enamelled face with Roman numerals, within a brass and five-glass case, h. 18 cm

£100 - £150

149

A 19th century folding shoe jack/horn

£40 - £60

150

A group of mid-20th century correspondence including an official response on House of Commons paper from Winston Churchill, an invite from the Lord High Almoner to the 1940 Maundy Distribution, a signed letter from the Lord Chamberlain etc.

£200 - £300

HAT PIN COLLECTION

151

A silver hat pin, the finial of openwork design set two cabochon green beads, Charles Horner, Chester 1923, l. 29 cm

£80 - £120



Lot 152

152

A silver hat pin, the finial in the form of a butterfly and set oval green glass, Charles Horner, Chester 1913, l. 21 cm

£80 - £120

153

A silver hat pin, the finial in the form of a butterfly and set circular amber glass, Charles Horner, Chester 1911, l. 26 cm

£80 - £120

154

A pair of silver hat pins, the finial's of openwork design, Charles Horner, Chester 1918, l. 27 cm, together with two similar Charles Horner hat pins set turquoise (4)

£120 - £150



155

A silver hat pin, the finial in the form of a pomegranate, Charles Horner, Chester 1910, l. 28 cm, together with three similar Charles Horner hat pins (4) *£120 - £150*



156

A silver hat pin, the finial of openwork design set a purple thistle shaped glass, Charles Horner, Chester 1912, l. 23 cm, together with two similar Charles Horner hat pins (3) *£80 - £120*

157

A pair of silver hat pins, the finial's in the form of rapiers, Charles Horner, Chester 1918, l. 28 cm, together with two similar Charles Horner hat pins (4) *£80 - £120*

158

A silver hat pin, the finial in the form of mistletoe and decorated in green enamel, Charles Horner, Chester 1904, l. 21 cm, together with three similar Charles Horner hat pins (4) *£120 - £150*

159

A silver hat pin, the finial in the form of a treble clef, Charles Horner, l. 17 cm, together with four similar Charles Horner hat pins (5) *£80 - £120*

160

A silver hat pin, the finial of openwork form set green heart shaped glass, Charles Horner, Chester 1914, l. 19.5 cm, together with three similar Charles Horner hat pins (4) *£80 - £120*

161

A silver hat pin, the finial of openwork seed head design, Charles Horner, Chester 1908, l. 20.5 cm, together with five similar Charles Horner hat pins including a pair contained on an original card (6) *£80 - £120*

162

Six silver and metalware hat pins including an example with acorn finial, l. 27.5 cm, another with coronet end and four others, various dates and makers (6) *£60 - £100*

163

Seven silver and metalware hat pins including an example with rapier finial, l. 20.5 cm, another with butterfly wing end and five others, various dates and makers (7) *£60 - £100*



Lot 164

164

A pair of silver hat pins, the finial's in the form of golf clubs and set amber glass, London 1908, l. 23 cm, together with four further hat pins of a similar design (6) *£100 - £150*

165

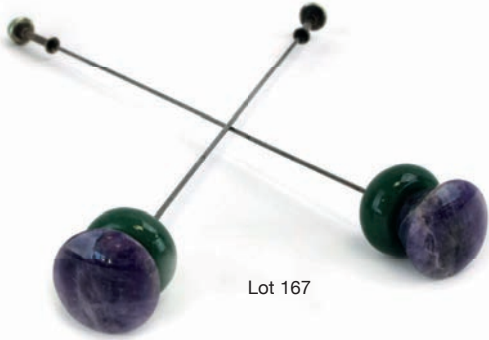
A silver hat pin, the finial of openwork design in the Art Nouveau manner, Pearce & Thompson, Birmingham 1911, l. 28 cm, together with four further Pearce & Thompson hat pins (5) *£120 - £150*



Lot 165

166

A silver hat pin, the finial of openwork design in the Art Nouveau manner and set amber thistle shaped glass, Pearce & Thompson, Birmingham 1910, l. 28.5 cm, together with three further Pearce & Thompson hat pins (4) £120 - £150



Lot 167

167

A pair of hat pins, the finial's in the form of thistles and set polished stone, l. 23 cm (2) £30 - £40

168

A group of twelve hat pins including a Ruskin pottery example, l. 17 cm, another with globular pierced and enamelled finial and ten other enamelled hat pins (12) £80 - £120

169

A cased pair of hat pins with amethyst quartz ends, l. 28 cm, a cased set of four hat pins with circular foliate ends and six glass end hat pins (qty) £60 - £100



171

A group of ceramic and glass hat pins including Murano glass examples, another with banded agate finial and others, various sizes (21) £100 - £150

172

A group of eight hat pins converted from military buttons including Royal Engineers and others, together with a cased pair of hat pins, the finial's decorated with an enamelled coronet and a similar pin (11) £40 - £60

173

An early 20th century oak stand with silver plated mounts containing approximately fifty hat pins including two micro mosaic examples, an Egyptian revival glass pin and many others (qty) £150 - £200

170

A group of twelve Satsuma hat pins including a heart shaped example, l. 18 cm (12) £150 - £200



174

Three ceramic stands containing a collection of approximately 150 hat pins of varying styles and designs (qty) £150 - £200

175

An Edwardian silver pin stand in the form of an arrow, Cornelius Desormeaux Saunders & James Francis Hollings (Frank) Shepherd, Chester 1904, h. 14 cm £40 - £60



Lot 175

176

An Edwardian silver six section hat pin stand on a purple velvet base, Birmingham 1905, h. 6 cm £30 - £40



Lot 176

177

An early 20th century hat pin stand in the form of a pair of tennis rackets, h. 12.5 cm, together with a silver plated example in the form of a golf club (2) £30 - £40

178

Four early 20th century stick pin stands including an example in the form of a walking stick stand, h. 17.5 cm £50 - £80



Lot 179

179

Two Noritake hat pin stands of flared form, one decorated with a castle scene, h. 12 cm (2) £30 - £40

180

A Carlton China hat pin stand in the form of a lighthouse for the 'City of Liverpool', h. 13.5 cm, together with six further crested ware stands (7) £50 - £80

181

Eleven ceramic hat pin stands including a novelty example of a gentleman, h. 12 cm, another in the form of a cat and nine others (11) £60 - £100

182

The Collector's Encyclopedia of Hatpins and Hatpin Holders by Lillian Baker, and two further booklets (3) £10 - 20

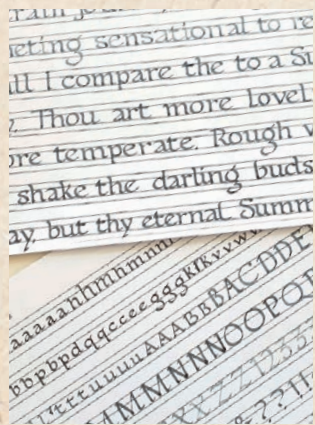
183 - 190

Spare Lots



Lot 174 (part)

LIMITED PLACES
BOOK NOW!



Craft

WORKSHOPS
AT

W&H PEACOCK
AUCTIONEERS & VALUERS



Calligraphy

**We are running another of our popular workshops,
so come and try your hand at calligraphy!**

This workshop is ideal for complete beginners although those who wish to brush up on basic skills are very welcome. In this session you will learn how to write in a Gothic Calligraphic Style.

Wednesday 19th June

9.30am-12.30pm £20 per person Tutor: Julie Kent

**Eastcotts Park, Wallis Way, Bedford MK42 0PE
01234 266 366 www.peacockauction.co.uk**

Cost includes all materials needed, tea/coffee and cake

To book your place on this half-day workshop and for more information about the course, please contact Julie on jewelsart@sky.com or call **07745 168107**

Pictures & Prints



Pictures & Prints

191

James F. Lynch (20th Century), 'Street Boys and Beggar', signed verso and dated '99, oil on board, 30 x 23 cm £50 - £80

192

James F. Lynch (20th Century), 'St. Peter de Merton, Bedford', signed verso and dated 1987, oil on canvas, 40 x 51 cm

£30 - £40

193

James F. Lynch (20th Century), A life study, unsigned, oil on board, 25 x 31 cm, together with four other works by the same hand (5) £60 - £100

**James Lynch studied at Camberwell School of Art and Goldsmith's College. He was Head of Art at Bedford Modern School from the 1960's to the 1980's. He lived in a flat in St. Peter's, Bedford, and also had a house in Larache, Morocco, where he did much of his painting.*

194

Katherine Elizabeth Henderson (20th Century), 'Child with a Doll', signed with initials, oil on canvas, 46 x 36 cm

*Art's Council and other labels verso, displayed in the 'Portraits of Children' Observer Exhibition in 1950. This picture is sold with a series of letters written by the artist to the former purchaser. £40 - £60

195

Follower of Adolphe Monticelli (1824-1886), Two ladies taking a stroll, bears signature, oil on panel, 48 x 33 cm

£100 - £150



Lot 192

196

...Hepburn (20th century) A view of Cullercoats Bay, Northumberland, signed, oil on canvas, 24 x 33.5 cm

£50 - £80



197

William Edwin Tindall (1863-1938),
A country landscape,
signed,
oil on board,
22 x 32 cm

£30 - £40



Lot 198

198

Early 20th Century School,
'Eruzione del Vesuvio',
unsigned,
oil on paper,
39 x 52 cm

£80 - £120



Lot 199 (detail)

199

Edwin Frederick Holt (1830-1912),
A girl feeding a group of birds,
signed,
oil on canvas,
60 x 49 cm

£200 - £300



Lot 200

200

Edwin Frederick Holt (1830-1912),
A woman carrying a jug of water to an
encampment,
signed and dated 1911,
oil on canvas,
60 x 44 cm

£300 - £400



Lot 201

201

Edwin Frederick Holt (1830-1912),
A group of cows drinking from a lake,
signed,
oil on panel,
30 x 45 cm

£200 - £300



Lot 202



Lot 204

202

Edwin Frederick Holt (1830-1912),
A lady seated on a bench,
signed,
oil on panel,
18 x 16 cm

£150 - £200



Lot 205

203

Follower of Sir David Wilkie
(Scottish 1785-1841),
A gathering of gentlemen,
bears signature and dated 1809,
oil on canvas,
62 x 74 cm

£150 - £200

204

Nancy Carline (1904-2004),
'Rome',
initialled, dated 1972 verso,
oil on canvas,
24 x 40 cm

£150 - £200

205

19th Century School,
A half-length portrait of Tom Lucas,
unsigned,
oil,
10 x 7 cm oval

£100 - £150



Lot 203



Lot 206

206

19th Century School,
A head and shoulders portrait of an elderly lady,
unsigned,
oil,
8 x 6.5 cm oval

£100 - £150

207

Barabbas Armitage (b. 1988),
'Grand Jete Vesica',
signed and dated 2018,
composition of acrylic on
card using mainly recycled
materials,
44 x 43 cm

£30 - £50

208

Mattoni
(19th Century School),
'Still Life Game',
signed and dated 1870,
oil on canvas, 68 x 52 cm

£200 - £300

209 - 210

Spare Lots

211

Stanley Orchart (1920-2005),
'Milton Ernest, Bedfordshire',
signed and dated 1966,
watercolour,
35 x 46 cm

£40 - £60

Lot 207



212

David Green (d. 2011),
'Willington Church',
signed, watercolour,
33 x 51 cm, together with 'Stables and Dove
Cote, Willington' (2)

£100 - £150

213

David Green (d. 2011),
'Blunham, Beds',
signed,
watercolour,
32 x 47 cm

£30 - £50

214

David Green (d. 2011),
'The Ouse at Great Barford',
signed,
watercolour,
27 x 36 cm

£30 - £40

215

R. Thornton (19th Century),
'Village of Church Knowle, Dorset',
signed,
watercolour,
17 x 25 cm, together with 'On the River Bredon,
Devon' (2)

£100 - £150



Lot 208

216

(?)Tizart (French School),
A procession of calvary,
signed,
watercolour,
14 x 28 cm, together with another by the same
hand (2) £100 - £150

217

D. Figra (20th Century),
A view of Venice,
signed,
watercolour,
28 x 18 cm, together with another by the same
hand (2) £80 - £120

218

N.G. Norman(?),
A seated gentleman with a plume,
signed and dated 1932,
watercolour,
25 x 15 cm,
together with another by the same hand (2)
£50 - £80

219

Follower of Henry Stannard (1844-1920),
'A Country Lane',
bears signature,
watercolour,
35 x 52 cm £60 - £80

220

Muriel Constance Smith R.M.S. (1903-1993),
A head and shoulders portrait of a girl,
signed and dated 1933,
miniature watercolour,
8.5 x 6.5 cm oval, in a metalwares frame with
loop *£100 - £150*



Lot 220

221

Muriel Constance Smith R.M.S.
(1903-1993),
'My Sister', Winifred Doris Sherwin nee Smith,
signed and dated '27,
watercolour,
40 x 32 cm, together with 'My Niece' by the
same hand (2) *£80 - £120*

222

FH. (19th Century),
A group of children playing on a wall, in the
manner of Kate Greenaway,
signed and dated 1888,
watercolour, 11 x 24 cm *£50 - £80*

223

Bradford Rudge (1805-1885),
A study of two ladies climbing a hill path,
signed,
watercolour,
36 x 54 cm *£120 - £150*

224

Edward Godolphin (20th Century),
A Scottish landscape,
signed,
goache,
49 x 66 cm *£40 - £60*

225

Andre Marie (20th Century),
A bustling street scene,
signed and dated 1928,
pen and wash,
58 x 76 cm *£80 - £120*

226

Irene Tebbs (Late 19th/early 20th Century),
'Summer' and 'Winter',
signed,
watercolours,
22 x 32 cm each (2) *Irene Tebbs was a pupil
of Henry Stannard at his Harpur Place Studio in
Bedford *£80 - £120*

227

19th Century School,
A Continental
townscape,
unsigned,
watercolour,
35 x 50 cm *£60 - £80*



Lot 228

228

Peter Nuttall (b. 1943),
A horse and rider,
signed and dated '78,
pen, ink and watercolour,
52 x 39 cm *£80 - £120*

229

Peter Nuttall (b. 1943),
'The Merry Go Round',
signed and dated '84,
pen, ink and chalks,
51 x 55 cm *£80 - £120*

230

Charles Sutton (1929-2009),
 'Warrior Series: Red Dragoon',
 signed and dated April 1993,
 mixed media,
 31 x 31 cm, together with three others in the
 same series: 'Blue Hussar', 'Blue Lancer' and
 'Light Dragoon' (4) *£150 - £200*

231 - 234

Spare Lots

235

Alfred Leete (1882-1933),
 A woman in a hat and shawl,
 inscribed in pencil 'Greetings from...Alfred
 Leete',
 etching,
 18 x 8 cm, together with another by the same
 hand *£40 - £60*

236

Montague Smyth (1863-1965),
 A shepherd and sheep,
 intalied,
 watercolour and pencil,
 23 x 29 cm, together with another by the same
 hand and three engravings *£30 - £50*

237

John Leon Williams,
 'First Glimpse of Kenilworth: The Homes and
 Haunts of Shakespeare 1892',
 photogravure,
 23 x 28 cm *£50 - £80*

238

Ian Richards (20th Century),
 A street vendor,
 dated 1916 to the image,
 signed in pencil and dated 1917,
 woodblock print,
 23 x 20 cm *£40 - £60*

239

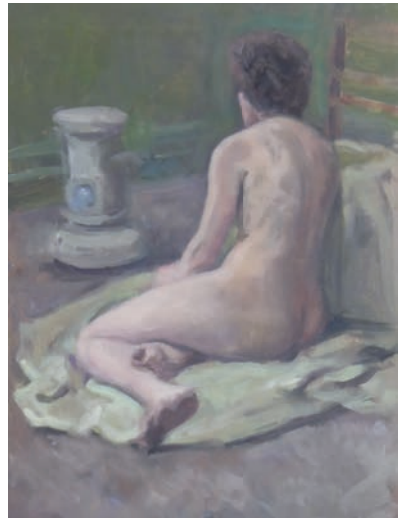
After Nicholas Langlois (1670-1707),
 'Le Chateau de Villers-Coste-Rez',
 coloured engraving,
 22 x 29 cm *£40 - £60*

240

Anton Lock (1893-1979),
 'Farm',
 signed,
 charcoal,
 31 x 45 cm *£40 - £60*

241

After Sir William Russell Flint (1880-1969),
 'Venetian Festival',
 signed in pencil
 coloured reproduction published by Frost &
 Reed,
 49 x 63 cm *£80 - £120*



Lot 242

242

George Weissbort (1923-2013),
 A study of a nude,
 signed and dated 1944,
 pastels,
 39 x 28 cm *£200 - £300*

243

David Loggan (1634-1692),
 'Hortus Botanicus, The Physick Garden in
 Oxon',
 engraving,
 42 x 51 cm *£100 - £200*

244 - 250

Spare Lots



LOCKE & ENGLAND

AUCTIONEERS & VALUERS

TO BE SOLD BY AUCTION

Thursday 27th June 2019
Mid Century Design

Commencing at 11.00am



This is a specialist sale of mid century classic designed furniture and collectables. These auctions have proved to be very popular with specialist buyers and private individuals looking for something out of the ordinary to furnish their homes. Our contemporary sales are jam-packed with Scandinavian, American and British designs by the 'outside of the box' thinkers of the 1950s through to today.

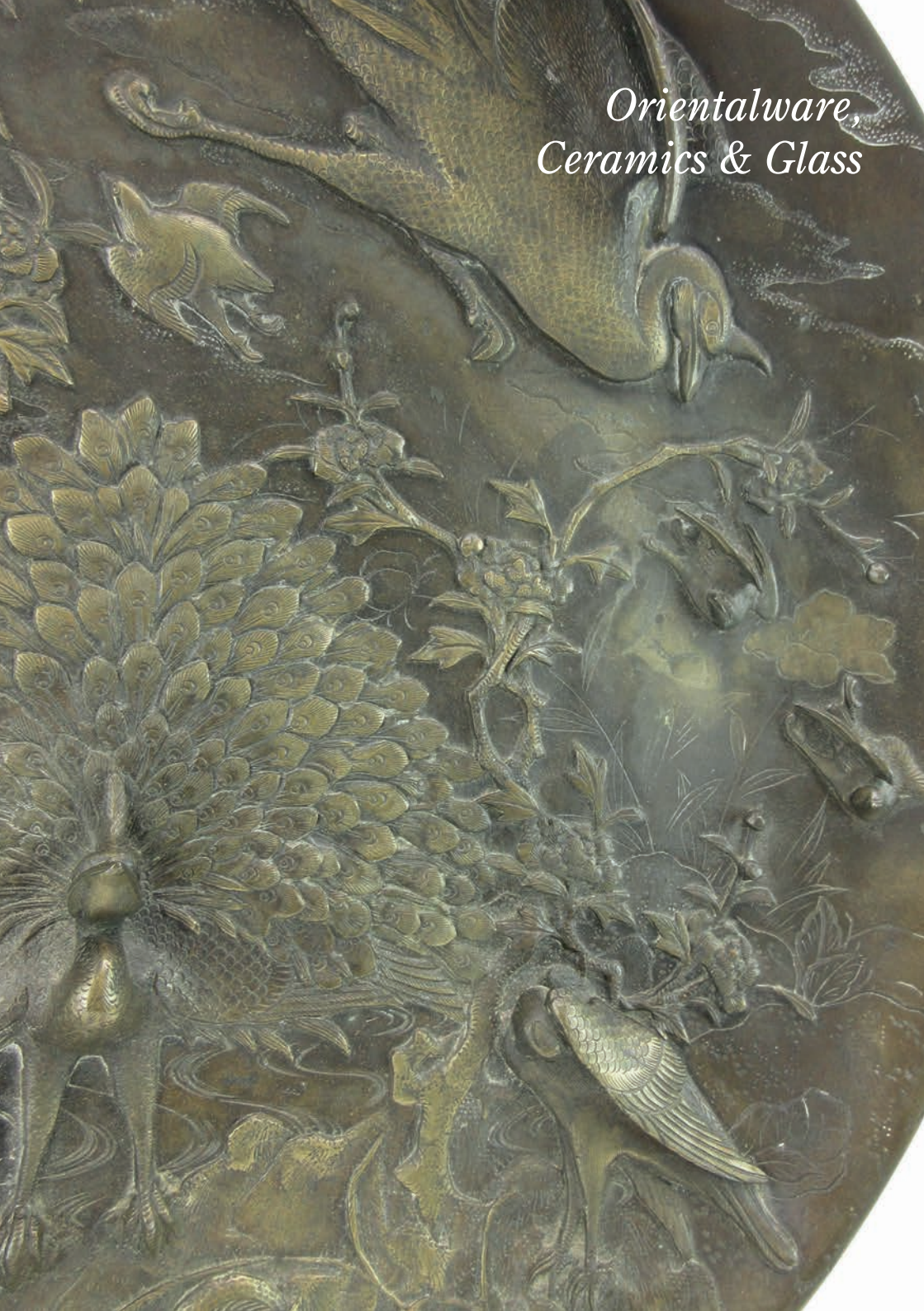
**Viewing: Wednesday 26th June – 9am to 7pm,
Morning of sale from 9am**

AUCTION ENTRIES INVITED

Leamington Spa Auction Centre 12 Guy Street, Leamington Spa, CV32 4RT
01926 889 100 or valuers@leauction.co.uk

www.leauction.co.uk

*Orientalware,
Ceramics & Glass*





Lot 251

251

A pair of Kutani covered vases of urn shaped form, the covers with figural finial's, the bodies typically decorated with tradition landscapes, birds and blossoming shrubs, signed to bases, h. 39 cm *£60 - £100*

252

A modern Chinese vase of slender ovoid form decorated in a pale grey crackle glaze, impressed character mark to base, h. 14 cm *£30 - £50*

253

A Cantonese bowl of reeded form, decorated in coloured enamels with a court scene, signature to base, d. 11.5 cm, together with a small vase and a blue and white dish (3) *£60 - £100*

254

A pair of early 20th century vases of ovoid form, each decorated with song birds amongst flowering shrubs on a celadon ground, h. 25 cm *£100 - £150*

255

An early 20th century Cantonese jar and cover of cylindrical form, decorated in coloured enamels with dragons, griffin's, insects and foliate motifs, h. 17.5 cm *£20 - £30*

256

A pair of late 19th/early 20th century Cantonese vases of baluster form decorated in coloured enamels with court scenes amongst a body decorated with objects, insects and foliate motifs, h. 33 cm, together with two chargers decorated in a similar manner (4) (af) *£120 - £150*

257

A Japanese Imari dish of hexagonal form decorated with a pair of fighting foo dogs within a scroll, signed Fuku, w. 20 cm, together with three saucers and a metalware box relief decorated with bamboo (5) *£30 - £40*

258

A Meiji egg shell service, typically decorated and signed Imura Hikojiro, Yokohama *£30 - £40*

259

A Provincial blue and white ginger jar, typically decorated with a shore scene, h. 21 cm, together with a similarly decorated saucer dish (2) *£40 - £60*



Lot 254

260

A brown patinated bronze figure modelled as an outstretched tiger, signed A. Toit, l. 56 cm *£200 - £250*

261

A pair of brown painted bronze figures modelled as kyllins, h. 13.5 cm *£200 - £250*

262

A brown patinated bronze charger of circular form relief decorated with peacocks and other birds, signed verso, d. 48.5 cm *£200 - £250*

263

A carved wooden ruyi sceptre, l 41 cm *£120 - £150*

264

A Chinese champleve enamelled vase of waisted form decorated with hexagonal motifs and stylised birds, signed to base, h. 30 cm, together with a modern enamelled jar and cover (2) *£40 - £60*

265

A Chinese carved stand, h. 25 cm, four further stands and two Cantonese side plates (7) *£20 - £30*

266

A Chinese Export box of rectangular form painted with traditional scenes on a red lacquered ground, w. 36 cm *£40 - £60*



Lot 262



Lot 261

Lot 263



Lot 260

267

A Korean silver and enamelled bottle vase decorated with fruiting vines, h. 18 cm, a pair of cloisonne miniature vases on stands and a modern folding table screen (4) £40 - £60

268

A modern lacquer box of octagonal form decorated with mother of pearl with a pair of cranes in flight, w. 24 cm, together with two similar boxes, a set of chop sticks and six panels (10) £80 - £120

269

A cloisonne enamelled vase of cylindrical form decorated with a song bird and blossoming branches on a famille noir ground, d. 29 cm £30 - £40

270

A pair of Chinese cast metal brush pots of cylindrical form relief decorated and gilt highlighted with dragons within a stormy border, h. 24 cm £60 - £100



Lot 271

271

A Chinese boxwood carving modelled as a travelling elder, h. 25 cm, together with a similar carving, smaller (2) £100 - £150

272

A modern lacquered four section table screen decorated with figures travelling to a pagoda, h. 40 cm £20 - £30



273

A Chinese silk embroidered rank badge worked in gilt and coloured threads and depicting an exotic bird within a landscape, 29.5 x 32 cm £200 - £300

274

A wooden three panel table screen of scalloped form relief decorated in coloured hardstone with traditional female figures, h. 31 cm, together with a metalware box and a similar cup (3) £40 - £60

275

A pair of carved bamboo brush pots of cylindrical form, relief decorated with figures within a bamboo grove, h. 28 cm £60 - £80

Lot 275



276

A 19th century Chinese fretwork rosewood carving decorated with foliate motifs, l. 115 cm, together with two smaller panels to match (3)
 £80 - £120

277

A pair of 19th century rosewood and bone inlaid panels, each decorated with a battle scene, w. 52.5 cm
 £120 - £150



Lot 278

278

An Indian miniature painting on marble depicting a couple seated in a garden, 14 x 9.5 cm
 £30 - £40

279

A set of six Japanese hand coloured woodblock prints depicting the weather gods Raijin and Fujin at work, framed as one, each 8 x 5 cm
 £40 - £60

280

A pair of Chinese paintings on pith paper depicting a child at play and figures inspecting a scroll, each 17.5 x 27.5 cm (2)
 £40 - £60

281

After Hiroshige (1797-1858), A view of the Yahagi Bridge at Okazaki, coloured woodblock print, 13 x 20 cm
 £40 - £60

282

A set of three Japanese woodblock prints each depicting a bird within a foliate setting, signed, each 20.5 x 14.5 cm
 £30 - £40

283

A Chinese silk embroidered panel worked in gilt and coloured threads and depicting figures within traditional landscapes, 55 x 10 cm and two similar embroideries (3)
 £60 - £100

284

An early 20th century hand coloured photograph depicting a Japanese lady washing her hair, 19 x 24.5 cm, together with a further photo of a Japanese green grocers (2)
 £60 - £80

285

Japanese School (late 19th/early 20th century), A study of a European river bridge, indistinctly signed, coloured woodblock print, 25 x 35 cm
 £50 - £80

**286**

After Ichiyosai Toyokuni (1823-1880), 'Sumo', coloured woodblock print, 20 x 42 cm
 £30 - £40

Lot 286

287

A lacquered table top display cabinet with campaign-type handle, single glazed door and decorated with song birds amongst blossoming branches in the oriental manner, h. 50.5 cm

£40 - £60



Lot 288

288

A Chinese side table, the circular rouge marble surface above a typically carved structure, d. 57 cm. h. 66 cm

£200 - £300



Lot 289

289

A Chinese side table, the scalloped rouge marble surface above a typically carved structure, d. 42 cm. h. 38 cm

£80 - £120

290

A mottled green jade bangle, internal d. 6 cm

£50 - £80

291

A green jade bangle, internal d. 5.6 cm

£50 - £80

292

A green jade bangle, internal d. 5.8 cm

£50 - £80

293

A green jade bangle, internal d. 5.6 cm

£50 - £80

294

A pale green jade bangle, internal d. 6.1 cm

£50 - £80

295

A pale green/brown jade bangle, internal d. 5.8 cm

£50 - £80

296

A pale green/brown jade bangle, internal d. 5.8 cm

£50 - £80

297

A pale green/brown jade bangle, internal d. 5.8 cm

£50 - £80

298

A pale green/brown jade bangle, internal d. 5.6 cm

£50 - £80

299

A pale green/brown jade bangle, internal d. 5.6 cm

£50 - £80

300

A pale green/brown jade bangle, internal d. 5.6 cm

£50 - £80

301

A pale green/brown jade bangle, internal d. 5.6 cm

£50 - £80

302

A pale green/brown jade bangle, internal d. 5.6 cm

£50 - £80

303

A pale green jade bangle, internal d. 5.6 cm
£50 - £80

304

A green jade bangle, internal d. 6.1 cm £50 - £80

305

A green jade bangle, internal d. 6.2 cm £50 - £80

306

A green jade bangle, internal d. 6.2 cm £50 - £80

307

A mottled green jade bangle, internal d. 6 cm
£50 - £80

308

A pale green/brown jade bangle, internal
d. 5.9 cm £50 - £80

309

A pale green jade bangle, internal d. 5.9 cm
£50 - £80

310

A pale green/brown jade bangle, internal
d. 5.5 cm £50 - £80

311

A pale green jade bangle, internal
d. 5.6 cm £50 - £80

312

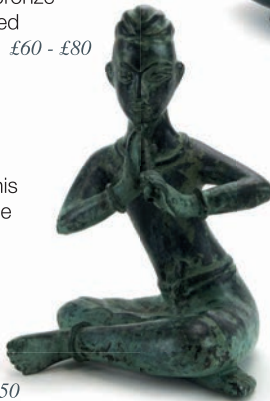
A green patinated bronze
modelled as a seated
musician, h. 23 cm £60 - £80

313 - 350

Spare Lots

351

Sally Tuffin for Dennis
China Works, a vase
of slender bellied
form decorated
with rhinos on a
shaded pale
blue/sand
ground, h. 18 cm
£120 - £150



Lot 312

352

Sally Tuffin for Dennis China Works, a vase of
slender bellied cylindrical form decorated with
blue and pink bands, h. 23.5 cm £30 - £50



Lot 353

353

Sally Tuffin for Dennis China Works, a vase of
slender ovoid form decorated with macaws on a
shaded yellow/blue ground, h. 31.5 cm
£100 - £150

354

A Moorcroft vase of
squat form
decorated in
the Carousel
pattern, h.
10 cm, boxed
£80 - £120



Lot 354

355

A Moorcroft enamel
trinket box of circular
form decorated in the
Christmas Snowdrop
pattern, d. 4.5 cm, boxed
£60 - £100

356

A Moorcroft enamel miniature vase decorated
in the Christmas Snowdrop pattern, d. 7.5 cm,
boxed £60 - £100

357

A Moorcroft basket
decorated with
fruits on a blue
ground with
silver plated
handle and
mounts, h.
10.5 cm £30 - £40



Lot 357

358

A Hubert Krumeich-Remmy vase of shouldered form relief decorated in the Art Deco manner within geometric blue bands, h. 31.5 cm

£80 - £150



Lot 359

359

A Doulton Lambeth bottle vase, the scalloped lip above a jeweled border, the body decorated with stylised foliate motifs in shades of blue, green and brown, Eliza Simmance, h. 28.5 cm

£200 - £300



Lot 360

360

A Doulton Lambeth vase of globular form, the body decorated with stylised seaweed motifs and flowerhead jewels in shades of green, brown and blue, Elizabeth Fisher, h. 24 cm

£100 - £150

361

John Wadsworth and Leon Solon for Minton Ltd., a two handled vase of slender tapered form, tubeline decorated with stylised flowers within a deep red ground in the Secessionist manner, base numbered 41, h. 18 cm

£40 - £60



362

A Royal Doulton 'Flambe' shallow dish of circular form, d. 15.5 cm, together with a Edward R. Wilkes 'New Spectria' bottle vase (2)

£40 - £60

363

A silver mounted scent bottle and scent pial, together with five further glass scent bottles (7)

£80 - £120

364

Two Royal Crown Derby paperweights, each modelled as a Polar bear, max h. 10.5 cm

£50 - £80



Lot 372

365

A Royal Doulton figure modelled as a standing Scottie dog, HN1031, h. 10 cm, together with another Doulton figure of a terrier eating, smaller (2) £20 - £30

366

A group of sixteen late 19th/early 20th century apothecary bottles, max h. 25 cm £60 - £100

367

A near pair of Continental porcelain perfume bottles and stoppers of slab form decorated in the Rococo manner, bases marked SPM, h. 15 cm, together with two silver mounted dressing table bottles (4) £30 - £50

368

A Meissen figural group modelled as flower seller and her male companion, h 16 cm £200 - £300

369

A pair of 18th century-style figures modelled as a piper and his female companion, pseudo Meissen marks, max h. 16.5 cm £80 - £120

370

A Sunderland lusterware jug relief decorated with wine leaves, cattle and horses, h. 14.5 cm £20 - £30

371

A pale blue Japserware cheese dome and stand of typical form relief decorated in the Neo-Classical manner, base impressed 'Lear', h. 21 cm £80 - £120

372

A Doulton Burslem dessert service, each piece hand painted with floral bouquets and signed C. Hart, comprising a pair of oval tazza, a pair of square tazza, a pair of heart shaped plates and twelve side plates (qty) £100 - £150



Lot 368



Lot 373

373

A pair of Dresden bottle vases of canted form, each decorated with courting couples within a pale pink foliate ground, h. 31 cm £40 - £60

374

A modern porcelain and gilt metal mounted casket decorated with a pair of figures within a blue and white foliate ground, w. 15 cm, together with a smaller Limoges box (2) £30 - £40

375

A Minton majolica oyster dish, d. 25 cm, a Wedgwood leaf pattern tazza, a similar side plate and a pair of Imari scalloped edge plates (5) £30 - £50

376

A Sevres-style charger decorated with putti within a kingfisher blue foliate ground, d. 33.5 cm £20 - £30

377

A Royal Dux shot enamel figure modelled as a retriever and its catch, h. 18.5 cm (af) £40 - £60

378

A pair of Royal Dux shot enamel figures modelled as a shepherd and his female companion max h. 23.5 cm (af) £40 - £60

379

A pair of 18th century-style porcelain figures modelled as a pair of lovers, h. 17 cm, together with three further figures, smaller (5) £30 - £40

380

A Royal Worcester six sitting service comprising coffee cans, saucers and side plates decorated in the Aesthetic Movement manner, together with two similar bowls (qty) £30 - £40

381

A Foley Wileman 'star' pattern tea service puce decorated in the Aesthetic Movement manner comprising: 12 x tea cups, 11 x saucers, 12 x side plates, 1 sandwich plate, 1 x sugar bowl and 1 x cream jug £250 - £300

382 - 400

Spare Lots



Lot 381 (part)

Silver & Plate



Silver & Plate

401

A novelty silver watch in the form of a bible, together with a matching stand, St. James's House Company, London 1984, limited edition 200/2500, boxed and with certificate £60 - £80

402

A set of six coins commemorating the Seoul 1988 Olympics, cased £10 - £20

403

An early 20th century six piece silver cruet set, Mappin & Webb, Birmingham 1918, cased £60 - £100

404

A small silver salver of scalloped form commemorating the Silver Wedding Anniversary of Queen Elizabeth II and the Duke of Edinburgh, Ollivant & Botsford, London 1972, limited edition 44/1000, d. 20.5 cm, 9.5 ozs, cased and with certificate £100 - £150

405

A set of eleven silver and parcel gilt spoons commemorating Elizabeth II's Silver Jubilee, maker TM, London 1977, 12 ozs, cased £120 - £150

406

An early 20th century silver hip flask with bayonet fitting, maker SI Ltd., Chester 1923, l. 11.5 cm, 3.5 ozs £40 - £60

407

A silver mounted decanter and stopper, the glass decorated with roundel's, Evans & Co., Birmingham 1908, h. 25 cm (af) £20 - £30

408

A pair of late Victorian silver two handled salts of vase shaped form, maker TH, Birmingham 1896, two spoons and three silver napkins rings, various dates and makers, overall 3 ozs (7) £40 - £60

Lot 408



409

A silver and parcel gilt goblet of typical form with pineapple design stem and base, Garrard & Co. Ltd., London 1970, h. 14 cm, 8.5 ozs £100 - £150



Lot 409

410

A group of six silver napkin rings, mostly engine turned, various dates and makers, overall 3.5 ozs (6) £40 - £60

411

A silver christening mug of typical form and two napkin rings, various dates and makers, overall 4 ozs, together with a Japanese cast metal tray, matching sugar bowl and cream jug (6) £40 - £60

412

An Anglo-Indian metalware sugar bowl and matching jug, typically relief decorated with deities, overall 6.5 ozs £100 - £150



413

A metalware two section belt clip decorated with exotic birds, w. 10.5 cm, 1.5 ozs £20 - £30





Lot 414



414

A metalware bowl relief decorated with iris in the Japanese manner, d. 9 cm, together with a (?) Iranian pepper of spherical form, overall 4 ozs (2)
£150 - £200

420

A pair of silver butter dishes of scalloped circular form, maker EJH, Birmingham 1945, d. 14 cm, 3 ozs
£30 - £40

415

A metalware two handled tea strainer and stand, w. 11.5 cm, a silver jar lid, a silver butter knife, a silver condiments spoon and a German metalware teaspoon, various dates and makers, together with a small parcel of plated flatware (qty)
£40 - £60

421

A silver sauce boat of typical form with gadrooned border, leaf capped c-scroll handle and on three hoof feet, SB&S Ltd., Chester 1940, 2.5 ozs
£20 - £30

416

A parcel of Victorian silver thread and shell pattern flatware comprising: 1 x table fork, 5 x dessert forks and 6 x dessert spoons, together with five further silver spoons and two forks, various dates and makers, overall 33 ozs (qty)
£250 - £350



417

A silver sauce boat of typical form with leaf capped c-scroll handle and three hoof feet, SB&S Ltd., Chester 1941, 2 ozs
£20 - £30

418

A pair of silver dwarf candlesticks of knopped form, maker MA, Birmingham 1958, h. 8 cm, together with a silver three piece cruet set (5)
£40 - £60

419

A pair of silver backed oval brushes, a silver christening mug, a silver pusher and a silver open face pocket watch, various dates and makers (5)
£50 - £80

422

A silver four slice toast rack, maker GH, Sheffield 1935 and two further silver toast racks, overall 5.5 ozs, together with a plated ladle and a plated serving spoon (5)
£80 - £120





Lot 425



423

A pair of silver mounted decanters and stoppers of square form, Birmingham 1972, h. 24 cm, each suspending a silver decanter label (4)

£40 - £60

430

An early 20th century shallow silver tazza of oval form with pierced fruiting vine decoration, maker JRO & Sons Ltd., Sheffield 1933, w. 31 cm, 21 ozs

£180 - £220

424

A mixed parcel of silver comprising a spill vase, a leaf shaped dish, a bottle brush, a two handled salt, a mustard, two peppers and a salt, various dates and makers, weighable silver 4 ozs (8)

£80 - £120



Lot 430

425

A pair of Edwardian stamped silver bon bon dishes of oval form, maker AJS, Birmingham 1910, w. 19.5 cm, 3.5 ozs

£50 - £80

431

A pair of early 20th century pierced silver dishes of waisted form, each with a leaf capped c-scroll handle on a flowerhead foot, Mappin & Webb, Sheffield 1930, h. 10 cm, overall 10 ozs

£100 - £150

426

A Danish silver cake slice with foliate end, Johannes Siggaard, Copenhagen 1950, l. 15.5 cm, boxed

£80 - £120

432

An Edwardian pierced silver dish in the form of a three-leaf clover, Walker & Hall, Sheffield, w. 21.5 cm, 7.5 ozs

£60 - £100

427

A mixed parcel of silver comprising an oval mustard, four salts, a pepper and four spoons, various dates and makers, weighable silver 12 ozs (qty)

£80 - £120



Lot 433

428

An Edwardian silver shallow dish with shell and scroll border raised on a conforming foot, London 1902, d. 15.5 cm, 6 ozs

£50 - £80

433

A pair of silver wine coasters of typical form, maker MCH, London 1986, d. 12.5 cm

£60 - £100

429

A pair of silver dishes of scalloped form, Birmingham 1964, Barker Ellis Silver Co., d. 23.5 cm, overall 28 ozs

£250 - £300

434

A late Victorian silver sugar bowl with gadrooned decoration, F B Thomas & Co., London 1890, d. 12 cm, 5 ozs

£40 - £60



Lot 429





Lot 431



435

A silver handled swagger stick, hallmarks rubbed, l. 86 cm *£20 - £30*

436

A silver three piece cruet set, an oval silver mustard and a silver urn shaped pepper, various dates and makers (5) *£30 - £40*

437

An early 20th century silver two handled butter dish with clear glass liner, maker CB&S, Sheffield 1911, w. 13 cm, together with a similar butter dish and two associated knives (4) *£40 - £60*



Lot 440

440

A pierced silver bowl of canted circular form with gadrooned border on four leaf capped paw feet, Mappin & Webb, Sheffield 1949, d. 21 cm, 13 ozs *£120 - £150*



Lot 438

438

A silver two handled sugar bowl of vase shaped form with gadrooned decoration, J H Potter, Sheffield 1929, 4 ozs *£30 - £40*



441

A set of twelve silver place card holders, each in the form of a flowering rose, maker CBs, Birmingham 1998, h. 3.5 cm, 6 ozs, cased *£80 - £120*



Lot 434

439

A silver gravy boat of typical form with leaf capped c-scroll handle on three hoof feet, maker B&D, Birmingham 1939, 7.5 ozs *£60 - £100*

442

A three piece silver cruet set of typical form, S Ltd., Birmingham 1955, cased *£40 - £60*

443

A set of twelve silver handled Kings pattern butter knives, FH, Sheffield 1989, together with a Georgian silver sauce ladle and five further items of silver flatware, various dates and makers, weighable silver 3.5 ozs *£60 - £100*

444

A Victorian silver sifting spoon, the handle cast in the Neo-Classical manner, Mappin & Webb, London 1887, cased, together with a silver straining spoon and stand, overall 4.5 ozs (2) *£30 - £40*

445

A silver three piece cruet set of traditional form, maker HS, Sheffield 1944, max h. 7.5 cm (3) *£40 - £60*

446

An Edwardian silver preserves jar of cylindrical form, makers mark indistinct, London 1906, h. 9 cm, 6.5 ozs *£60 - £100*

447

A mixed parcel of silver comprising a set of three small pin dishes, a dwarf candlestick, a napkin ring and a silver mounted salt, various dates and makers (6) *£80 - £120*

448

A silver engine turned compact, a brooch in the form of a treble clef and a further openwork brooch (3) *£20 - £30*

449

A late 19th/early 20th century silver plated coffee pot of ovoid vase shaped form decorated in the Neo-Classical manner with acanthus leaves, masque spout and on three slender paw feet, h. 32 cm *£40 - £60*

450

An early 20th century silver plated galleried tray of oval form, w. 62 cm *£30 - £50*

Lot 449

451

A mixed parcel of silver comprising three teaspoons, two pairs of sugar nips, a condiments spoon, a butter knife and a further serving implement, various dates and makers, weighable silver 4.5 ozs *£40 - £60*

452

An early 20th century silver six piece cruet set of pierced vase shaped form, maker ESB, Birmingham 1913, cased *£60 - £100*

453

A pair of silver backed brushes, cased, together with three further silver backed hairbrushes and a hand mirror, various dates and makers (qty) *£40 - £60*

454

A silver engine turned cigarette case, Adie Brothers, Birmingham 1937, l. 8 cm, a further florally engraved silver cigarette case and a silver matchbox holder, various dates and makers, overall 6 ozs (3) *£50 - £80*

455

Five silver napkin rings and a silver napkin holder, various dates and makers, overall 4 ozs (6) *£40 - £60*

456

A set of six silver bean end coffee spoons, Mappin & Webb, London 1912, cased, together with a small parcel of silver spoons (qty) *£30 - £40*

457

A silver horn handled candle snuffer of typical form, maker HU, Birmingham 1965, l. 32 cm *£20 - £30*

458

A mixed parcel of silver comprising a pair of peppers, a pair of mustards, a pair of salts and a bud vase, various dates and makers, weighable silver, 7.5 ozs (7) *£60 - £100*

459

A silver matchbox sleeve decorated in blue enamel with the Bedfordshire & Hertfordshire Regimental badge, JB & Co. Ltd., London 1940, l. 6 cm, together with two silver napkin rings and a dress clip (4) *£40 - £60*

460 - 550

Spare Lots



Coins, Jewellery & Watches



Coins, Jewellery & Watches

551

A 9ct yellow gold medallion commemorating Mars' Golden Jubilee in 1982, 18.2 gms, cased
£200 - £250

552

A sovereign dated 1973, cased £180 - £220

553

A Victorian sovereign dated 1884, young head
£250 - £300

554

A sovereign dated 1974 £180 - £220

555

A sovereign dated 1976 £180 - £220

556

A sovereign dated 1980 £180 - £220

557

A sovereign dated 1981 £180 - £220

558

A sovereign dated 1921, Perth mint £180 - £220

559

A Victorian sovereign dated 1865, young head, shield back £200 - £250

560

A Victorian half sovereign dated 1887, shield back
£80 - £120

561

A Victorian half sovereign dated 1897 £80 - £120

562

An Edwardian half sovereign dated 1908
£80 - £120

563

An Edwardian half sovereign dated 1910
£80 - £120

564

A half sovereign dated 1912 £80 - £120

565

A half sovereign dated 1913 £80 - £120

566

A half sovereign dated 1913 £90 - £110

567

A sovereign dated 1974 £200 - £250

568

A Victorian sovereign dated 1882, young head
£200 - £250

569

An Edwardian sovereign dated 1904 £180 - £220

570

An Edwardian sovereign dated 1909 £180 - £220

571

A sovereign dated 1912 £180 - £220

572

A sovereign dated 1913 £180 - £220

573

A Victorian half sovereign dated 1898 £90 - £110

574

An Edwardian half sovereign dated 1901
£90 - £110

575

An Edwardian half sovereign dated 1903
£90 - £110

576

An Edwardian half sovereign dated 1910
£90 - £110

577

A half sovereign dated 1913 £90 - £110

578

A sovereign dated 1911, Melbourne mint
£180 - £220

579

A 9ct yellow gold cased sovereign holder, Birmingham 1911, overall 11.8 gms £120 - £150

580

A 9ct yellow gold curb link bracelet with lobster clasp suspending three half sovereigns dated 1900, 1982 and 2000 in loose mounts, overall 19.7 gms
£400 - £600



Lot 559



Lot 580

581

A Victorian sovereign dated 1888, Melbourne mint £180 - £220

582

A Victorian sovereign dated 1892 £180 - £220

583

A Victorian sovereign dated 1893 £180 - £220

584

A Victorian sovereign dated 1893 £180 - £220

585

An Edwardian half sovereign dated 1904 £90 - £110

586

An Edwardian half sovereign dated 1910 £90 - £110

587

A 9ct yellow gold chainlink necklace suspending a Victorian sovereign dated 1891, Sydney mint, in a loose mount, overall 20 gms £280 - £320

588

A half sovereign dated 1911 £100 - £150

589

A sovereign dated 2017 £180 - £220

590

A sovereign dated 2017 £180 - £220

W&H PEACOCK

AUCTIONEERS & VALUERS

Established 1901

FORTHCOMING AUCTIONS

Sale Entries Now Invited



Weekly Sale
Every Saturday



Antiques Sale
Monthly Auctions



Sporting Guns
13th June



Catering Equipment
4th July



Books & Ephemera
5th July



Machinery & Tools
31st July



Collectable Toys
2nd August



Wines & Spirits
3rd August



Mid Century Design
22nd August



Jewellery & Watches
6th September

Bedford Auction Centre, Eastcotts Park, Wallis Way, Bedford, Bedfordshire MK42 0PE
Tel: 01234 266366 | info@peacockauction.co.uk | www.peacockauction.co.uk

591 - 611

Spare Lots



Lot 612

612

An 18ct yellow gold ring set single diamond in an illusion setting, together with an 18ct yellow gold ring set three small graduated diamonds in a crossover setting, various sizes, overall 5 gms (2) *£120 - £150*

613

An 18ct yellow gold ring set ruby and small diamonds in a flowerhead setting, 2.9 gms, together with a 9ct yellow gold ring set three small rubies interspersed with two small diamonds in an inline setting, 1.8 gms, various sizes (2) *£80 - £120*

614

Two 9ct yellow gold full eternity rings set paste, 5.2 gms, together with a silver dress ring of leaf design, various sizes (3) *£40 - £60*

615

A late Victorian 18ct yellow gold signet ring, London 1887, ring size S, 3 gms *£60 - £80*

616

A 22ct yellow gold wedding band, Birmingham 1931, ring size J 1/2, 5.3 gms *£100 - £120*

617

An 18ct tri-colour hinged bracelet, internal w. 5.9 cm, 23 gms *£400 - £500*



Lot 617

618

A 9ct yellow gold fine flat curb link necklace suspending a smoky quartz pendant and a band ring (2) *£60 - £100*

619

A mixed parcel of silver and metalware jewellery including bangles, ear studs, rings etc. (qty) *£60 - £100*

620

An 18ct yellow gold ring set oval blue coloured stone and six small diamonds in a raised setting, stone measures approximately 14 x 10 mm, ring size N 1/2, 7.3 gms *£250 - £300*



Lot 620

621

A 9ct yellow gold rope twist necklace, 5.7 gms, a 15ct yellow gold dress stud set small diamond, cased and a small yellow metal nugget (3) *£90 - £110*

622

A yellow metal double figaro link necklace suspending an oval locket, overall 34.2 gms *£350 - £400*



Lot 623

623

A yellow metal bangle with horseshoe clasp and suspending two charms, one in the form of a heart set small diamond, internal w. 5.6 cm, 9.7 gms *£100 - £150*

624

An 18ct yellow gold and platinum highlighted ring set single diamond in a square illusion setting, ring size J 1/2, 1.8 gms, together with a similar 9ct ring (2) *£80 - £120*

625

A 9ct yellow gold half eternity ring set four emeralds and three diamonds in a channel-type setting, ring size N, 2.3 gms *£80 - £120*

626

An 18ct yellow gold keepers-type ring of knot design, London 1919, ring size L, 3 gms

£50 - £70



632

An early 20th century 18ct yellow gold cluster ring set oval emerald within a border of old cut diamonds, the shoulders each set a further emerald, Chester 1913, ring size O, 2.2 gms

£100 - £150

627

Three 9ct yellow gold rings set emeralds and small diamonds, various sizes, overall 4.7 gms (3)

£100 - £150



Lot 628

633

Four pairs of 9ct yellow gold ear studs and ear pendants, each set oval cameos, overall 7.2 gms (4 pairs)

£60 - £100

634

Four pairs of 9ct yellow gold ear studs, each set an oval cameo, overall 11.1 gms (4 pairs)

£60 - £100

628

An 18ct yellow gold ring set oval amethyst in a rubover setting, ring size M, 3.9 gms

£80 - £120

629

A 9ct yellow gold ring set tonneau cut amethyst and small diamonds, ring size M and a matching ring set garnet, overall 3.8 gms (2)

£80 - £120



Lot 630

635

Four small 9ct yellow gold pendants, each set an oval cameo, together with a similar obsidian example, overall 10.5 gms (5)

£60 - £100

636

Two 9ct yellow gold pendants each set an oval cameo, max l. 4.5 cm, together with a yellow metal pendant/brooch of similar design (3)

£60 - £100

637

A 9ct yellow gold ring set carved flowerhead coral, ring size O, together with a pair of similar ear studs (3)

£60 - £100

630

A 9ct yellow gold ring set three graduated oval blue coloured stones interspersed with four small diamonds in a carved setting, Birmingham 1991, ring size N 1/2, 2.6 gms

£60 - £80

631

A 9ct yellow gold ring set oval amethyst in a rubover setting, the shoulders each set a small diamond, ring size N 1/2, together with a 9ct yellow gold ring set small opal and rubies, overall 4.9 gms (2)

£70 - £90



Lot 639



Lot 638

638

A platinum ring set brilliant cut diamond in a six claw setting, the shoulders each set a further tapered baguette cut diamond, Birmingham 2004, central stone approximately 1 carat, ring size I, 4.6 gms

£1500 - £2000

639

An 18ct white gold ring set emerald cut emerald in a yellow gold four claw setting, the shoulders each set two tapered baguette cut diamonds, central stone measures approximately 8 x 7 mm, ring size I, 5.5 gms

£500 - £800

640

A 9ct yellow gold ring set smoky quartz and two yellow metal dress rings, various sizes, overall 3 gms (3) *£40 - £60*

641

A yellow metal ring set a small diamond and two seed pearls in an openwork setting, ring size I, 1.6 gms *£40 - £60*

642

A ladies Bulgari 18ct two colour 'B Zero' ring, stamped '750', ring size I 1/2, 8.3 gms *£300 - £400*



Lot 642



Lot 643

643

A gentleman's Bulgari 18ct two colour 'B Zero' ring, stamped '750', ring size U, 11 gms *£400 - £500*

644

An 18ct yellow gold and platinum highlighted crossover ring set three graduated diamonds, ring size L 1/2, 2.5 gms *£80 - £120*

645

An 18ct yellow gold ring set small diamonds in an illusion crossover setting, ring size O 1/2, together with an 18ct yellow gold ring set opal and ruby cluster (af), overall 5 gms (2) *£120 - £150*

646

A 14ct yellow gold wedding band, band w. 7 mm, ring size N, 5.2 gms *£70 - £90*

647

A 9ct yellow gold ring set three graduated sapphires and two diamonds, together with a similar three stone ring, various sizes, overall 5.1 gms (2) *£80 - £120*



Lot 648

**648**

A 9ct yellow gold cluster ring set oval opal in a surround of small diamonds, together with a similar crossover ring, various sizes, overall 4.5 gms (2) *£80 - £120*

649

A 9ct yellow gold ring set three rows of small tanzanite, together with a similar 9ct white gold ring, various sizes, overall 7.8 gms *£80 - £120*

650

A 22ct yellow gold wedding band, band w. 4 mm, London 1965, ring size V, 3.8 gms *£50 - £80*

651

An Edwardian 9ct yellow gold bar brooch, Chester 1905, w. 4.7 cm, 2.2 gms, together with two further dress brooches, one in the form of a crescent moon (3) *£30 - £40*

652

Three 9ct yellow gold necklaces each suspending a pendant of cross form set paste and pearls, overall 10.6 gms (3) *£100 - £150*

653

A 9ct yellow gold chainlink necklace suspending a pendant set fire-type opal, together with a pair of matching ear studs set small diamonds, overall 6.2 gms (3) *£100 - £150*

654

A 9ct yellow gold mounted cameo brooch depicting a classical female figure head and shoulders, cameo measures 4.5 x 3.4 cm, together with a similar base metal mounted cameo brooch (2) *£60 - £100*

655

A 9ct yellow gold fine curb necklace suspending an Edwardian 9ct yellow gold openwork pendant, together with a similar pendant (2) *£80 - £120*

656

A 9ct yellow gold floral spray brooch set seed pearls, w. 5.2 cm, 4.2 gms in an original oval fabric covered Liberty & Co. box *£60 - £100*

657

A mixed parcel of stud and screw-type earrings including a 14ct yellow gold pair set paste, a pair of pearl earrings and others (qty) £60 - £100

658

A 9ct yellow gold chainlink necklace, 7.3 gms
£60 - £80

659

A 9ct yellow gold rectangular link bracelet, 13.1 gms
£120 - £150

660

A mixed parcel of gold, yellow metal and gold plated jewellery including a 9ct yellow gold figaro link necklace suspending a circular pendant of Egyptian design and other items (af) (qty)
£150 - £200

661

A yellow metal double chainlink bracelet suspending a selection of charms including an articulated fish, a passport, a speed boat, an enamelled Union Jack and many others, overall 67.2 gms
£600 - £800

662

A 14ct yellow gold figaro-type link necklace, 17.1 gms
£200 - £250

663

A 9ct yellow gold chainlink necklace, 10.5 gms
£80 - £120

664

A 9ct yellow gold chainlink necklace, 17.5 gms
£140 - £160

665

A single strand fine baroque pearl necklace with 18ct yellow gold pendant set cabochon oval coral and three small diamonds, l. 38.5 cm (af)
£80 - £120



666

A 9ct yellow gold chainlink necklace suspending a large oval pendant set pale opal within a border of coloured and white diamonds, pendant w. 5.8 cm, overall 41.2 gms
£400 - £500

667

A yellow metal double sided pendant set pale opal and coloured and white diamonds, l. 3.2 cm, 6.1 gms
£80 - £120

Lot 661



668

An 18ct yellow gold pendant set oval pale opal in an openwork setting, l. 3.9 cm, 4.7 gms
£50 - £80



Lot 669

669

An 18ct yellow gold hinged bracelet set five oval emeralds interspersed with twelve small diamonds, internal w. 6.2 cm, 22.1 gms
£800 - £1000



Lot 670

670

A yellow metal pendant set emerald cut emerald and four brilliant cut diamonds in rubover settings, l. 2.8 cm, 3 gms
£200 - £250

671

A 9ct yellow gold dress ring set square cut citrine in a raised four claw setting, stone approximately 1.8 x 1.8 cm, ring size K, 8.2 gms
£50 - £80

672

Three 9ct yellow gold rings including a flowerhead ring set four oval amethyst and a small opal, a five stone opal ring and one other, various sizes, overall 6.9 gms (af) (3)
£80 - £120

673

Three 9ct yellow gold rings set garnets and small pearls, various sizes, overall 8.2 gms (af) (3)
£100 - £150

674

Three 9ct yellow gold rings including a domed ring set coral and small pearls, another set moss agate and one set turquoise, various sizes, overall 15.1 gms (af) (3)
£100 - £150

675

An 18ct yellow gold ring set two diamonds, 2.1 gms, together with two further dress rings set paste, various sizes, overall 8.8 gms (af) (3)
£100 - £150

676

A mixed parcel of jewellery comprising a 22ct yellow gold wedding band, 2 gms, four 9ct yellow gold rings and a 9ct yellow gold bar brooch, 12.7 gms (6)
£120 - £150

677

A mixed group of silver and metalware jewellery including a Ruskin-type brooch, a lava brooch carved with a classical figure, a micro mosaic-type brooch, rings, pendants and other items (qty)
£60 - £100

678

Six silver and metalware bracelets including an Eastern hinged bracelet, two charm bracelets and four others (6)
£60 - £100

679

A mixed group of silver and metalware necklaces including an example suspending enamelled city crests, a filigree work Maltese cross, a niello pendant of heart shaped form and others (qty)
£60 - £100

680

A mixed group of silver and metalware jewellery comprising five pairs of earrings, two pendants, a necklace and a ring, all set moonstone-type stones (qty)
£60 - £100

681

A mixed group of silver and metalware jewellery comprising six pairs of earrings, a pendant and a brooch, all set purple coloured stones (qty)
£60 - £100

682

A mixed group of silver and metalware earrings including rose quartz studs, malachite pendants, pearl set crosses and many others (qty)
£60 - £100

683

A mixed group of silver and metalware jewellery including a teardrop pendant, a bar brooch, earrings and other items, all set citrine and similar stones (qty)
£80 - £120

684

A mixed group of silver and metalware jewellery including an oval pendant, a beaded necklace, earrings and other items all set turquoise and similar stones, together with a pair of yellow metal ear studs (qty) £30 - £50

685

A mixed group of amber-type jewellery including a pendant necklace, a ring, a bracelet, earrings, beaded necklaces etc. (qty) £80 - £120

686

A heavy yellow metal signet ring with diamond cut engraving, stamped '18', ring size W, 13.5 gms £250 - £300



Lot 686

687

An 18ct yellow gold ring set five graduated diamonds in illusion settings, ring size N 1/2, 2.9 gms £80 - £120

688

A 9ct yellow gold wedding band with textured finish, ring size S 1/2, 4.5 gms £40 - £60



Lot 689

689

A yellow gold ring set three graduated diamonds in an inline setting, central stone approximately 0.5 carats, ring size P, 3.1 gms £200 - £300



Lot 690

690

An 18ct ring set baguette cut sapphire in a twist setting, ring size N, 9.9 gms £300 - £400

691

An 18ct yellow gold ring set five graduated opals interspersed with eight small diamonds, ring size P, 4.2 gms £150 - £200

692

A yellow metal ring set oval opal in a six claw setting, ring size H 1/2, 1.9 gms £40 - £60

**693**

Elsa Peretti for Tiffany & Co., a pair of silver teardrop earrings, l. 2.7 cm £50 - £80

694

An 18ct yellow gold boxlink necklace suspending a yellow metal openwork pendant of teardrop form, overall 14.2 gms £200 - £300

695

An 18ct yellow gold florally engraved wedding band, 3.4 gms (af) and a 9ct yellow gold dress ring (2) £80 - £120

696

An 18ct yellow gold ring set oval emerald and two brilliant cut diamonds, ring size N, 3.7 gms £200 - £250



Lot 697

697

An 18ct yellow gold ring set oval pink coloured stone and two brilliant cut diamonds, ring size M 1/2, 4.6 gms £600 - £700

698

An 18ct yellow gold ring set marquise citrine in a border of small diamonds, ring size M, 5.2 gms £150 - £200

699

A pair of 18ct white gold ear pendants, each set five small diamonds above a pear cut pink coloured stone, 2 gms (2) £120 - £150



Lot 700

700

A pair of 18ct white and yellow gold ear studs, each set an opal and diamond cluster, 2.9 gms (2) *£200 - £250*

701

Two 22ct yellow gold wedding bands, ring sizes O and Q, overall 6 gms (2) *£150 - £200*



702

A 9ct yellow gold double curb bracelet with heart shaped padlock clasp suspending seventeen yellow gold and yellow metal charms, overall 53.5 gms *£600 - £800*

703

A 9ct yellow gold curb bracelet with heart shaped padlock clasp, 68.2 gms *£700 - £900*

704

A 9ct yellow gold bracelet set five green coloured stones and a 9ct yellow gold ropetwist bracelet, overall 8.6 gms, together with a 9ct yellow gold mounted cameo brooch and a silver gilt ring (4) *£80 - £120*

705

A yellow metal openwork pendant of foliate design and a yellow metal dress ring set spherical touchwood (2) *£60 - £100*



Lot 706

706

A white metal half eternity ring set seventeen princess cut diamonds in a raised channel setting, ring size J, 3 gms *£150 - £200*

707

A pair of Pomellato 18ct white gold ear pendants, each pave set small diamonds and suspending a facet cut red glass drop, overall 6.6 gms (2) *£60 - £100*

708

A 9ct white gold half eternity ring set four rubies interspersed with small diamonds, ring size L, 2 gms *£40 - £60*



Lot 703



Lot 709

709

A yellow metal double curb link bracelet suspending nine charms including two enamelled fish, one in the form of an eye and others, together with four further loose charms, overall 39.8 gms *£500 - £700*

710

A white gold half eternity ring set marquise garnets interspersed with small diamonds, ring size Q, 3.3 gms *£100 - £150*

711

Two 18ct yellow gold rings set small diamonds, overall 3.8 gms (af) (2) *£40 - £60*



Lot 712

712

A 9ct yellow and rose Clogau gold 'Cariad/Love' ring, ring size Q, 5 gms *£60 - £80*

713

A 9ct yellow gold ring set three oval opals, ring size N 1/2, 2.9 gms *£40 - £60*

714

An 18ct white gold half eternity ring set five princess cut sapphires interspersed with small diamonds, ring size L, 3 gms *£80 - £120*

715

An 18ct yellow gold ring set oval green coloured stone in an openwork crossover setting, ring size N 1/2, 3.4 gms *£100 - £150*

716

An 18ct white gold wedding band, London 1976, ring size N 1/2, 3.9 gms *£60 - £80*

717

A 22ct yellow gold wedding band, 2.7 gms, together with a yellow metal full eternity ring set paste (2) *£80 - £120*

718

An 18ct yellow gold ring set four oval tanzanite interspersed with six small diamonds in a channel setting, ring size Q, 8 gms *£250 - £300*



Lot 718

719

A 10ct yellow gold fine curb link necklace, 2.1 gms and a silver engine turned propelling pick (2) *£40 - £60*

720

A hand knotted polished (?) agate continuous bead necklace suspending a green jade-type pendant and four white coloured polished stones, l. 58 cm, orange bead d. 6 mm *£30 - £40*



Lot 726

721

A 9ct white gold signet-type ring pave set small princess and brilliant cut diamonds, ring size P, 6.5 gms *£60 - £100*

722

A 14ct yellow gold ring set marquise diamond in a raised setting, the band set six further brilliant cut diamonds, ring size Q, 5 gms *£120 - £150*

723

A yellow metal ring set three graduated sapphires and small diamonds in an openwork crossover setting, ring size Q, 3.8 gms *£60 - £100*

724

A yellow metal dress ring set rectangular cut citrine, together with a yellow gold ring set five graduated rubies, overall 10 gms (2) *£60 - £100*

725

A 19th century double sided mother of pearl mourning pendant of oval form, painted and decorated with hair with an Italianate landscape, l. including suspension loop 7.4 cm *£100 - £150*

726

A 19th century yellow metal pendant of oval form, relief decorated with a blue enamelled six point star within an engraved ground set six coral, the reverse with plaited hair section, l. including suspension loop 3.2 cm *£200 - £300*

727

An early/mid 20th century white metal full eternity ring set brilliant cut diamonds, ring size N 4.1 gms *£250 - £300*



Lot 727



Lot 728

728

A 19th century yellow metal pendant of heart shaped form centrally set a small pearl and rose cut diamond cluster in a blue guilloché enamelled ground within a white pearl studded border, the reverse with plated hair section, l. including suspension loop 3 cm *£500 - £700*



Lot 729

729

An early 20th century white metal ring set five cushioned and brilliant cut diamonds in a raised engraved square shaped setting, ring size O ½, 3.3 gms *£150 - £200*



Lot 730

730

An early 20th century platinum ring set brilliant cut diamond in a raised eight claw setting, the shoulders each set two smaller diamonds, central stone approximately 0.5 carats, ring size P ½, 3.4 gms (af) *£500 - £700*

731

A Ciro three strand synthetic pearl necklace with 9ct yellow gold barrel shaped clasp, boxed *£80 - £120*

732

A yellow metal ring set sapphire and diamond flowerhead cluster, a 14ct yellow gold ring set pale blue teardrop stone, a 9ct yellow gold cluster ring and eight further dress rings (13) *£60 - £80*

733

An early 20th century 9ct yellow gold and enamel decorated football medallion and a similar 9ct yellow gold dance medallion, overall 15.4 gms, together with a silver medallion (3) *£150 - £200*



734

An 18ct yellow gold ring set cabochon sapphire and six small diamonds in a tapered band setting, central stone approximately 0.7 carats, ring size O, 6.3 gms *£300 - £400*



Lot 735

735

An 18ct yellow gold and platinum highlighted ring set five graduated cushion cut diamonds in millegrain settings, central stone approximately 0.25 carats, ring size R ½, 2.5 gms *£350 - £400*

736

An 18ct yellow gold ring set four small graduated pearls interspersed with small green coloured stones, together with a yellow metal crossover ring set two small pearls and three diamonds, various sizes, overall 5.2 gms, (af) (2)
 £100 - £150

737

An early 20th century 18ct yellow gold and platinum highlighted ring set three small diamonds in an illusion setting, ring size R, 1.6 gms
 £40 - £60

738

A 10ct yellow gold college-type ring, a 9ct yellow gold heart shaped padlock clasp and a yellow metal signet ring set hardstone, overall 11.1 gms (3)
 £50 - £80



Lot 739

739

An 18ct white gold half eternity ring set nine brilliant cut diamonds in an engraved setting, ring size N, 4.3 gms
 £250 - £300



740

An 18ct white gold half eternity ring set four square cut sapphires and three brilliant cut diamonds in millegrain settings, hallmarked for London 1994 ring size O, 3.6 gms
 £200 - £250



Lot 741

741

An 18ct yellow gold ring set five brilliant cut diamonds in a curved setting, hallmarked for Birmingham 1991, ring size O, 4.6 gms
 £150 - £200

742

Five 9ct yellow gold dress rings set opal, amethyst and other stones, various sizes, overall 9.3 gms (5)
 £150 - £200

743

Seven pairs of yellow gold, yellow metal and silver ear studs of varying designs (7 pairs)
 £80 - £120

744

A base metal mounted mourning brooch of oval form set curled hair, w. 3.7 cm, a naïve cameo pendant and a further pendant depicting two young children in a jet-type mount (3)
 £40 - £60

745

A gold plated watch chain, two fobs and a gun metal cased fob watch (4)
 £30 - £40

746

A filigree work necklace set three graduated oval mother of pearl cameos depicting classical females head and shoulders, a matching bracelet, a jet-type bead necklace, a silver pendant necklace and a pair of 9ct yellow gold ear pendants (6)
 £40 - £60

747

A 9ct white gold ring set brilliant cut glass, ring size O, 4.8 gms
 £200 - £300



Lot 747



Lot 748

748

A white metal ring set three stone ring set brilliant cut glass, ring size O, 5.2 gms
 £200 - £300

749

An 18ct yellow and white gold basket weave design lighter by Cartier, l. 7 cm £600 - £800



Lot 750

750

A yellow metal plique-à-jour enamelled three section chain suspending an enamelled pendant decorated in the Italiante style, l. 21 cm

£400 - £600



Lot 749

751

A 9ct yellow gold 'regards' ring, an 18ct yellow gold ring set ruby and two small diamond chips in recessed settings and two further gold rings set diamonds in illusion settings, various sizes, overall 11.4 gms £150 - £200

752

A 22ct yellow gold wedding band, 2.5 gms, a hollow 10ct yellow gold signet ring, 4.4 gms and two further yellow metal rings, various sizes (4) £80 - £120

753

A group of 9ct yellow gold jewellery comprising a ropetwist necklace, a locket necklace, a ropetwist necklace and a chainlink necklace, overall 46.5 gms £400 - £500

754

A 9ct yellow gold ring set three graduated diamonds in an inline setting, central stone approximately 0.5 carats, ring size L, 2 gms

£100 - £150



Lot 755

755

An 18ct yellow gold and platinum highlighted crossover ring set two cushion cut diamonds, the shoulders each set three small diamonds, stones approximately 0.25 carats each, ring size K, 2.5 gms

£100 - £150

756

An 18ct yellow gold cluster ring set oval pink coloured stone in a border of small diamonds, hallmarked for Birmingham 1975, ring size J, 4.6 gms

£100 - £150



Lot 756

757

An 18ct white gold ring set small diamond in an illusion setting, together with an 18ct yellow gold half eternity ring set seven small diamonds, overall 4.8 gms (2)

£80 - £120

758

A 9ct yellow gold signet ring, a gold coloured heart shaped locket and a metalware moonstone-type pendant (3)

£20 - £30

Lot 759



759

A 9ct yellow gold fringe-type necklace,
l. 43.5 cm, 18.6 gms *£200 - £250*

760

A 9ct yellow gold curb link bracelet with heart shaped clasp and suspending twelve charms including a church, King Henry VIII and others, overall 40.4 gms, together with a silver charm bracelet (2) *£350 - £400*

761

A yellow gold florally engraved hinged bracelet, Birmingham 1976, 14 gms *£120 - £150*

762

A 9ct yellow gold ropetwist necklace with tassel ends, 29.3 gms *£250 - £300*

763

A yellow metal fine chain link necklace suspending an Edwardian 15ct yellow gold openwork pendant set seed pearls and pink coloured stones, pendant drop 4.5 cm, overall 4.1 gms *£100 - £150*



Lot 760 (part)

764

A 9ct yellow gold four bar gatelink bracelet with heart shaped padlock clasp, 5.2 gms *£40 - £60*



Lot 764

765

A 9ct yellow gold fine curb link necklace suspending a 9ct yellow gold pendant set four small pearls, together with a pair of similar ear pendants, overall 5.6 gms (3) *£50 - £80*

766

Two 18ct yellow gold rings set small diamonds, 4.1 gms, together with a similar 9ct yellow gold ring, 2.7 gms (3) *£120 - £150*

767

An 18ct yellow gold ring set three graduated oval sapphires interspersed with four small diamonds, ring size M, 2.4 gms *£80 - £120*



Lot 762

768

A 22ct yellow gold wedding band, Birmingham 1935, ring size N, 4.2 gms *£100 - £150*

769

A 9ct yellow gold bar brooch set oval cameo depicting a classical female figure, w. 5.5 cm, 2.9 gms *£40 - £60*

All estimates exclude buyer's premium of 21% including VAT which is payable in addition

@WHPeacock /WHPeacockAuctioneers

770

A yellow metal circular link bracelet with heart shaped padlock clasp, marks worn, overall 16.5 gms *£150 - £200*

776

A 10ct yellow gold mounted four section pale green jade bracelet *£200 - £250*



Lot 771



Lot 777 (part)

771

A yellow metal oval locket, l. 4.8 cm, together with a similar locket set turquoise in a horseshoe setting (2) *£200 - £300*

777

A suite of 18ct white gold jewellery comprising a necklace, bracelet and pair of ear pendants each set diamond and sapphire clusters, overall 14.4 gms *£300 - £400*

772

A yellow metal pendant of oval form inset florally decorated pietra dura panel and having a memory section verso, l. 3.4 cm, together with a florally engraved and enamelled oval locket (2) *£50 - £80*

778

A yellow metal wedding band, ring size Q, 3 gms *£60 - £80*

773

A 9ct yellow gold bar brooch of scrolled design set small pearls and tourmaline drop, Chester 1910, w. 4.2 cm, together with two similar brooches (3) *£80 - £120*

779

An 18ct yellow gold flat curb link necklace suspending an 18ct yellow and white gold cross pendant set eleven small brilliant cut diamonds, pendant drop 2.3 cm, overall 3.9 gms *£80 - £120*

774

An 18ct yellow gold and platinum highlighted ring set small ruby and two small diamonds in an openwork setting, ring size Q, 3 gms *£60 - £80*



Lot 780

775

A baroque-type pearl ropetwist necklace with flowerhead clasp, a matching bracelet, a silver brooch set marcasite and jade-type stone and a pair of rose quartz ear studs (4) *£60 - £80*

780

An 18ct yellow and white gold tennis-type bracelet set eighteen brilliant cut diamonds in rubrover settings, l. 19 cm, 18.3 gms *£350 - £450*



Lot 776

781

A late 19th/early 20th century yellow metal ring set five graduated old cut diamonds in a scrolled setting, together with two similar diamond set rings, various sizes, overall 8 gms (3) *£300 - £400*



Lot 781



782

An 18ct yellow gold ring set three graduated rubies interspersed with two brilliant cut diamonds and eight small diamonds, London 1971, ring size O, 4.3 gms *£250 - £300*

786

An 18ct yellow gold dress ring set oval amethyst, Chester 1919, a similar 9ct yellow gold ring and an oval pendant, overall 13 gms (3) *£200 - £250*



Lot 787

783

A white metal dress ring set rectangular cut red glass and six small diamonds in a raised setting, ring size R, 6 gms *£40 - £60*

787

A novelty 9ct yellow gold paper clip, London 1968, l. 6.6 cm, 9.3 gms *£100 - £150*

784

A late 19th/early 20th century yellow metal 'poison'-type signet ring with hinged section set oval bloodstone, together with an 18ct yellow gold signet ring, Chester 1917, overall 11.1 gms (2) *£150 - £200*



Lot 784



Lot 788

788

A 9ct yellow gold note clip, London hallmark unclear, l. 3.7 cm, 10.8 gms *£100 - £150*



Lot 785

785

An 18ct white gold dress ring set oval citrine within a border of small diamonds, London 1974, ring size O, 7.7 gms *£250 - £300*

789

A 9ct yellow gold curb link watch chain with t-bar and lobster clasp, 28.6 gms *£300 - £400*



Lot 786



Lot 789



790
A 9ct yellow gold flat curb bracelet with
florally engraved heart shaped padlock clasp,
35.5 gms *£350 - £400*



Lot 791

791
A 9ct yellow gold flat curb bracelet with
florally engraved heart shaped padlock clasp,
35.1 gms *£350 - £400*



Lot 792

799
A single strand continuous
cultured pearl necklace with
14ct yellow gold clasp, pearl
d. 6 mm, l. 42 cm *£80 - £120*

792
A 15ct yellow and rose gold
hollowlink bracelet, 15.3 gms
£220 - £250

793
A 9ct yellow gold facet
pattern hollow hinged
bracelet, 9.2 gms *£90 - £110*

794
A 9ct yellow gold bracelet
with engine turned links,
9.1 gms *£90 - £110*

795
A pair of 9ct yellow
gold oval cufflink's,
Birmingham 1971 in a
Fortnum & Mason box,
together with a pair of
9ct yellow gold torpedo
cufflink's and a 9ct yellow
gold signet ring, overall
16.9 gms *£150 - £200*

796
An Edwardian 15ct yellow
gold fine chainlink necklace
suspending an openwork
pendant set pale blue topaz,
pendant drop 3.5 cm, overall
3.6 gms *£40 - £60*

797
An 18ct yellow gold flat curb
necklace suspending a yellow
metal filigree work pendant in
the form of a Maltese cross, overall
23.3 gms *£500 - £700*

Lot 797

798
A late 19th century 9ct yellow gold band ring,
Chester 1897, four further yellow metal rings, a
single 9ct yellow gold ear hoop, a bar brooch
and a pendant (8) *£180 - £220*



800

A pair of 9ct white gold ear hoops set small diamonds, together with six further pairs of ear studs and ear pendants (7 pairs) £100 - £150

801

A 9ct yellow gold crossover ring set small diamonds in a channel-type setting, together with a 9ct yellow gold wedding band, various sizes, overall 5.2 gms (2) £70 - £90

802

A modern 9ct yellow gold dress ring set pink coloured stone in a border of small diamonds, ring size N, 2.6 gms £50 - £80

803

A modern 14ct yellow gold dress ring set oval green stone and three rows of brilliant and princess cut diamonds, ring size O, 7.2 gms £100 - £150

804

A modern 9ct yellow gold dress ring set square cut alexandrite-type stone and baguette cut diamonds, ring size N 1/2, 2.7 gms £50 - £80



Lot 805

805

A modern 14ct yellow gold bracelet set ten articulated sections each set baguette and brilliant cut diamonds, l. 18 cm, 15 gms £400 - £500

806

An 18ct yellow gold signet ring set small diamond in a recessed star setting, ring size U 1/2, 5.9 gms £100 - £150

807

An 18ct yellow gold ring set nine small diamonds in a square illusion setting, Birmingham 1972, ring size K, 4.7 gms £120 - £150



Lot 808

808

An 18ct white gold ring set Charles & Colvard moissanite, stone approximately 3 carats, ring size O, 4 gms £700 - £900



Lot 809

809

An 18ct yellow gold ring set oval emerald and two brilliant cut diamonds in a raised setting, ring size O 1/2, 3.9 gms £600 - £800



Lot 810

810

An 18ct white gold ring set small diamonds and citrine within an openwork foliate setting, ring size Q, 9.3 gms £300 - £400

811

A white metal dress ring set paste in an inline setting, shank stamped '585', ring size Q, 4.4 gms £70 - £90

812

A 9ct yellow gold curb link bracelet with heart shaped padlock clasp suspending a charm in the form of an ice skate, together with a 9ct yellow gold bar brooch, overall 12.7 gms (2) £120 - £150

813

A yellow metal ring set ten diamonds in a marquise shaped setting, ring size L, 1.9 gms £120 - £150

814

A 9ct yellow gold curb link bracelet suspending sixteen charms including a Maltese cross, Queen Nefertiti and others, together with a loose articulated charm in the form of a ballerina, overall 62.5 gms *£550 - £650*



Lot 815

815

An 18ct yellow gold ring set rectangular cut citrine and two small diamonds in a fan setting, ring size I 1/2, 4.9 gms *£150 - £200*

816

An 18ct yellow gold tie clip with engraved decoration, w. 6.2 cm, 7.1 gms *£120 - £150*



817

A 9ct yellow gold fancy link watch chain with t-bar and lobster clasp suspending a 1 pond coin dated 1894 on a fixed mount, overall 42.2 gms *£500 - £700*



Lot 818

818

An 18ct two colour gold ring in the form of a cat, its eyes set small sapphires, its head set five small diamonds, ring size P 1/2, 7.8 gms

£200 - £300

819

A 9ct yellow and white gold crossover ring set four small diamonds, a 9ct yellow gold flowerhead ring set emeralds and a two colour ring set paste (3)

£100 - £150

Lot 814



Lot 820

820

A 14ct white gold cluster ring set brilliant cut diamonds in a raised setting, ring size N, 3.3 gms *£500 - £800*



Lot 821

821

An 18ct yellow gold dress ring set paste and garnet in a modern setting, ring size K 1/2, 5.4 gms *£300 - £500*

822

A pair of 9ct white gold ear studs, each set a small brilliant cut diamond, total diamond weight approximately 0.25 carats *£70 - £90*

824

Two yellow metal dress rings, each set a single cultured pearl, overall 4.3 gms (2) *£40 - £60*

825

A 9ct yellow gold signet ring set cabochon red coloured stone, together with a similar ring set blue stone, various sizes, overall 10 gms (2) *£50 - £80*



Lot 826

826

An 18ct white gold cluster ring set oval blue topaz within a border of small diamonds, ring size N, 4.1 gms *£120 - £150*

827

A 9ct yellow gold band ring set brilliant cut diamond in a recessed star setting, Sheffield 1981, ring size T 1/2, 7.8 gms *£90 - £110*

828

A 9ct yellow gold dress ring set oval purple stone within a pierced setting, together with a similar dress ring set citrine, various sizes, overall 15.2 gms (2) *£100 - £150*

829

An 18ct yellow gold ring set brown cultured pearl and three small diamonds, pearl d. 9 mm, ring size M, 3.9 gms *£80 - £120*

830

Two 9ct yellow gold dress rings set bands of purple and blue coloured stones, various sizes, overall 7.4 gms *£60 - £100*

831

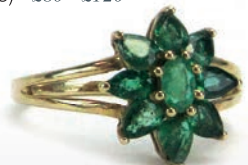
Five 9ct yellow gold dress rings set diamonds and paste, various sizes, overall 7.1 gms (5) *£80 - £120*



Lot 823

823

A white metal bar brooch in the form of a crescent moon and set three rubies and small diamonds, w. 7.5 cm, 8.4 gms *£200 - £300*



Lot 819

832

A 9ct yellow gold dress ring of wishbone design, together with three further 9ct and 10ct yellow gold dress rings set citrine and other stones, various sizes, overall 5.8 gms (4) *£60 - £100*

833

An 18ct yellow gold half eternity ring set small emeralds, 1.5 gms, together with three 9ct yellow gold rings set topaz, paste and other stones, 4.9 gms, various sizes (4) *£80 - £120*

834

A 9ct yellow gold chainlink necklace set nine cultured pearls, together with a pair of 9ct yellow gold screw-type earrings set *Cirol* synthetic pearls, overall 14.9 gms (3) *£120 - £150*

835

A 9ct yellow gold fine curb link necklace suspending a cluster pendant set sapphire and paste, a pair of matching ear pendants, a 9ct yellow gold ropetwist necklace suspending a crucifix pendant, a 9ct yellow gold fine curb link amethyst necklace and a pair of similar ear studs, overall 8.9 gms *£100 - £150*

836

A 14ct yellow and white gold plaited link bracelet, a similar 9ct white gold bracelet and a pair of 9ct yellow gold ear hoops, overall 7.3 gms (af) *£60 - £80*

837

A parcel of 9ct yellow gold jewellery comprising a gatelink bracelet, a wedding band, a cross pendant and a small signet ring, overall 12.7 gms (4) *£100 - £150*



Lot 838

838

An 18ct yellow gold ring set brilliant cut diamond in a six claw setting, stone approximately 1 carat, ring size N 1/2, 3.4 gms *£400 - £600*

839

A 9ct yellow gold charm in the form of a kangaroo, a 9ct yellow gold pin modelled as an insect and a black silk necklace suspending a 9ct yellow gold bow pendant (3) *£40 - £60*

840

An 18ct yellow gold ring set sapphire and two diamonds in an oblong setting, ring size M, 4.8 gms *£150 - £200*



Lot 841

841

A 9ct yellow gold cluster ring set blue topaz in a surround of small diamonds, ring size M, 3.5 gms *£100 - £150*



Lot 842

842

A 9ct yellow gold cluster ring set oval dark blue sapphire in a surround of small diamonds, ring size N 1/2, 2.1 gms *£60 - £80*



Lot 843

843

A 9ct white gold ring set brilliant cut diamond in an eight claw setting, ring size M, 1.3 gms *£40 - £60*



844

An 18ct yellow gold boxlink necklace suspending a Middle Eastern 17ct yellow metal pendant of circular form and depicting the Prophet Muhammad, overall 53.7 gms

£1200 - £1500

847

A white metal ring set brilliant cut diamond in a recessed star setting, stone approximately 0.5 carats, ring size R, 7.6 gms £500 - £700



848

A two colour metal pendant necklace of stylised leaf form centrally suspending a star shaped drop set rose cut diamond within a border of seven further rose and miners cut diamonds, pendant drop 5.5 cm, total diamond weight approximately 4 carats (af) £1200 - £1500



Lot 845

845

A pair of 18ct yellow gold cufflink's of rectangular form with engraved decoration, 15.6 gms

£300 - £350

849

A yellow metal filigree work necklace, l. 102 cm, 59.9 gms

£1200 - £1500



Lot 846

846

An 18ct yellow gold wedding band, band width 9 mm, ring size T, 10.1 gms

£200 - £250



Lot 850

850

A pair of Georg Jensen silver gilt and enamel decorated ear studs in the form of daisies, d. 1.8 cm, boxed

£80 - £120

851

A 9ct yellow gold Gemini pendant necklace, a black silk and 9ct yellow gold mounted watch fob, together with a small parcel of costume jewellery (qty) *£40 - £60*

852

An 18ct yellow gold cluster ring set dark sapphire in a surround of small diamonds, ring size K 1/2, 3.4 gms *£100 - £150*



Lot 855



Lot 853



Lot 856

853

An 18ct yellow gold cluster ring set oval ruby in a surround of small diamonds, ring size Q, 4.8 gms *£200 - £300*

854

A 22ct yellow gold wedding band, 2.7 gms, an 18ct yellow gold signet ring, 2.6 gms, a 9ct yellow gold wedding band and a 9ct yellow gold dress ring set citrine, 5.9 gms, various sizes (4) *£150 - £200*

856

A modern 18ct white gold ring set brilliant cut diamond within a crossover border of smaller brilliant and baguette cut diamonds, central stone approximately 1 carat, ring size N, 11.5 gms *£1200 - £1500*

855

A modern 18ct white gold cluster ring set brilliant and baguette cut diamonds in a tiered prunt-type setting, London 2010, four central stones approximately 0.5 carats each, ring size M 1/2, 8.5 gms *£1500 - £2000*

857

An early 20th century four strand facet cut garnet bead necklace with a Dutch 14ct yellow gold clasp of engraved flowerhead design, l. 34 cm *£350 - £400*

Lot 857





858

A 9ct yellow gold curb link bracelet with heart shaped padlock clasp suspending ten charms including a policeman, a whale and others, overall 34.5 gms *£350 - £400*



Lot 859

859

An 18ct white gold full eternity ring set twelve square cut emeralds interspersed with small diamonds, Sheffield 1993, ring size P, 3.5 gms *£300 - £400*

860

An 18ct yellow gold and platinum highlighted ring set five graduated old cut diamonds, ring size M, 1.9 gms *£200 - £250*



Lot 860

861

An 18ct yellow gold and platinum highlighted ring set oval sapphire and two old cut diamonds in illusion settings, ring size K, 2.8 gms *£150 - £200*

862

A late 19th century 15ct yellow gold brooch of oval Etruscan design set five small diamonds in recessed star settings, Chester 1896, w. 4.5 cm, 4.7 gms *£70 - £90*

863

A 9ct tri-colour gold bricklink necklet, 11 gms *£150 - £200*

864

A 9ct yellow gold cable link necklace suspending a 9ct yellow gold cross pendant set amethyst, overall 4.7 gms *£80 - £120*

865

A 9ct yellow gold ring of v-shaped form set small emeralds and diamonds, together with a 9ct yellow gold ring set diamonds and rubies in a crossover setting, various sizes, overall 4.4 gms *£150 - £200*

866

An 18ct yellow gold ring set oval ruby and four brilliant cut diamonds in an openwork marquise shaped setting, ring size N, 4.1 gms *£400 - £600*



Lot 866

867

An 18ct yellow gold ring set octagon cut emerald and six small diamonds, ring size O 1/2, 3.2 gms *£250 - £300*



Lot 867

868

An 18ct yellow gold ring set octagon cut amethyst and six small diamonds, ring size N, 3.2 gms *£250 - £300*



Lot 868

869

An 18ct yellow gold cluster ring set sapphire and diamond, 2.8 gms, four 9ct yellow gold rings set diamonds and paste, 9.4 gms and a silver dress ring (6) *£150 - £200*



Lot 874

870

An 18ct yellow gold ring set brilliant cut diamond in a four claw setting, stone approximately 0.5 carats, ring size M 1/2, 2 gms *£150 - £200*



Lot 870

874

A 19th century style 18ct yellow gold ring set ruby and two diamonds interspersed with four smaller diamonds in a scrolled setting, London 1990, central stone approximately 0.5 carats, ring size K, 3.3 gms *£250 - £350*

871

A single strand cultured pearl necklace with silver and marcasite set clasp, largest pearl d. 8 mm. l. 40 cm *£20 - £30*



Lot 872

875

An 18ct yellow gold ring set brilliant cut diamond in a raised four claw setting, the shoulders each set small diamonds, central stone approximately 0.75 carats, ring size N 1/2, 2.9 gms *£350 - £400*



Lot 875

872

A 9ct yellow gold brooch of flowerhead form set centrally with a sapphire in a surround of six pearls and small diamonds, Birmingham 1988, d. 2.5 cm, 6.2 gms *£150 - £200*

876

A white metal openwork bar brooch in the Belle Epoque manner set single brilliant cut diamond in a millegrain setting within a bright-cut mount, w. 5 cm, 2.8 gms *£50 - £80*

877

A white metal openwork brooch of rectangular form in the Belle Epoque manner set single brilliant cut diamond in a millegrain setting within a filigree-type mount, w. 3.4 cm, 2.9 gms *£100 - £150*



Lot 873

878

A white metal pendant set one brilliant cut diamond and two paste, a pair of cultured pearls, a baguette cut pale blue topaz and an oval opal in an inline setting, largest diamond approximately 0.6 carats, l. 4 cm, 4.8 gms *£250 - £300*



Lot 878

879

An 18ct yellow gold brooch in the form of a crescent moon and set four small rubies interspersed with three diamonds, Sheffield 1995, w. 2.6 cm, 3.8 gms *£150 - £200*

879

A white metal ring set three graduated diamonds in a shallow carved setting, ring size O 1/2, 3.3 gms *£80 - £120*

880

A white metal ring set single diamond in a raised filigree-type setting, stone approximately 0.3 carats, ring size I, 1.9 gms *£150 - £200*



Lot 881

881

An 18ct yellow gold crossover ring set brilliant cut diamond in an eight claw setting, stone approximately 0.4 carats, ring size L, 3.1 gms *£200 - £300*

882

An 18ct white gold fine boxlink necklace suspending a pendant set synthetic Tahitian pearl, together with a 9ct yellow gold pendant set paste, overall 4.1 gms (2) *£30 - £50*

883

Two 9ct yellow gold dress rings set coloured stones, overall 4.7 gms, together with two silver dress rings (4) *£50 - £80*



Lot 884

884

A 14ct yellow gold pendant set teardrop shaped emerald within a diamond set mount of foliate design, emerald approximately 1.1 carats, l. 2.9 cm, 2.5 gms, with certificates *£200 - £300*

885

A 9ct yellow gold brooch of leaf design, 2.9 gms, together with three further dress brooches (4) *£30 - £50*



Lot 886

886

An 18ct yellow gold cluster ring set three tiers of small diamonds, ring size R 1/2, 4.7 gms *£120 - £150*

887

A 9ct yellow gold cluster ring set seven small diamonds in a raised setting, ring size O, 3.1 gms *£40 - £60*

888

Three 9ct yellow gold dress rings set sapphires and opals, various sizes, overall 7.8 gms (3) *£80 - £120*

889

A 14ct yellow gold fine chainlink necklace suspending an openwork pendant of openwork design set sapphire and pearls, pendant drop l. 4.4 cm, overall 2.7 gms *£40 - £60*

890

Two hammered silver and metalware pendants of teardrop form, l. 5.3 cm, together with three silver and metalware brooches of stylised flowerhead form (5) *£30 - £40*

891

A group of silver and metalware earrings including a pair of ear pendants of bird design set coloured enamel, a pair of large square studs set turquoise, mother of pearl and other stones, a pair of screw-type earrings modelled as ewer's and many others, approximately 16 pairs *£30 - £50*

892

An Indian dress necklace set clear and pink glass and suspended on a cord strap, a pair of matching ear pendants and a similar necklace (4) *£20 - £30*

893

A rough amber-type graduated bead necklace, l. 80 cm *£20 - £30*

894

A mixed parcel of jewellery including a silver pendant necklace of cross form, a graduated green bead necklace, a cameo brooch and other items (qty) *£80 - £120*



Lot 895

895

A late 19th/early 20th century yellow metal brooch of Etruscan design in the form of an entwined serpent, the head decorated in coloured enamels and set a small diamond, the articulated jaw suspending a pearl set tongue, stamped '900', w. 6.6 cm, 23.8 gms *£500 - £700*

896

A pair of 18ct yellow gold ear studs of flowerhead form set cultured half pearls, d. 2.4 cm, overall 23.9 gms *£250 - £300*

897

A pair of 14ct yellow gold ear hoops, each set a small diamond cluster, d. 1.8 cm, overall 7.5 gms *£150 - £200*

898

A pair of 14ct yellow gold ear studs, each pave set small square cut diamonds above a cultured pearl drop, pearl d. 1.1 cm, overall 4.8 gms *£50 - £80*

899

A 14ct white gold ring set three small diamonds in illusion settings within an entwined setting, ring size Q, 2.6 gms *£50 - £80*

900

An 18ct yellow gold ring set small diamonds in a domed marquise shaped setting ring size T, 7 gms *£200 - £300*



Lot 900



Lot 901

901

A 14ct yellow gold cluster ring set oval ruby in a double border of small diamonds, ring size O, 3.7 gms *£100 - £150*

902

A white metal ring set brilliant cut ruby in a surround of small diamonds within a marquise shaped setting, ring size K 1/2, 2.5 gms *£80 - £120*

903

A 14ct white gold bricklink necklace suspending an oval ruby and diamond set cluster, pendant drop 2.2 cm, 7.2 gms *£120 - £150*

904

A parcel of silver and amber set jewellery comprising a cuff bracelet, a ring, a pendant necklace and three pairs of earrings (qty) *£80 - £120*

905

A parcel of silver and turquoise set jewellery comprising two cuff bracelets, a pendant necklace and a pair of earrings, together with a similar lapis lazuli ring (qty) *£50 - £80*

906

A metalware horse's bit link chain suspending a spaniel charm, a bucket, a heart and a scent bottle, together with a metalware chatelaine suspending a hound medallion (2) £60 - £100

907

A single strand Tahitian pearl necklace, two cultured pearl single strand necklaces and a multi-strand baroque pearl necklace (4) £100 - £150

908

A small parcel of jewellery comprising three brooches modelled as the Mosel-Riesling leaf, a scarf clip, a pair of ear clips, three tie clips and a pair of cufflink's (qty) £30 - £40



Lot 909

909

A 19th century 18ct yellow gold ring set marquise shaped cabochon cut aquamarine within a border of fourteen graduated old cut diamonds, estimated total diamond weight approximately 1.15 carats, ring size N, 5.6 gms £1000 - £1500

910

A 9ct yellow and rose gold crossover ring set a row of small diamonds, ring size P, 5.5 gms £80 - £120



Lot 910

911

Two 18ct yellow gold signet rings, various sizes, overall 8 gms £120 - £150

912

A 9ct yellow gold brooch in the form of a leaf, 2.7 gms, together with two filigree work brooches (3) £20 - £30

913

An 18ct white gold band ring set two princess cut diamonds in a recessed setting, ring size O, 6.3 gms £150 - £200

914

A 9ct yellow gold signet ring set small diamond in a recessed star setting, together with a 9ct yellow gold signet ring set onyx, various sizes, overall 10.4 gms (2) £100 - £150

**915**

A single strand delicate cultured pearl necklet set small brilliant cut diamond, a pair of marquise shaped rubies and six ruby beads, l. 39 cm, together with a pair of matching 18ct yellow gold ear pendants (3) £300 - £400

916

A 22ct yellow gold wedding band, 4.9 gms, an 18ct yellow gold ring set small diamonds, 2.2 gms (af), together with a part 9ct yellow gold ladies wristwatch, a 9ct yellow gold figaro link bracelet, a 9ct yellow gold bar brooch and a 9ct yellow gold fine chainlink necklace suspending a paste cluster, overall 23 gms (qty) £200 - £300

917

A 9ct yellow gold mounted cameo brooch depicting a classical female head and shoulders, l. 2.9 cm, a similar brooch, larger and a 9ct yellow gold cameo bar brooch (3) £60 - £80



Lot 920

920

A 19th century 18ct yellow gold ring set five graduated old cut diamonds interspersed with eight small rose cut diamonds in a scrolled setting, central stone approximately 0.5 carats, ring size M, 4 gms (af) £1800 - £2200

921

A yellow metal mourning brooch of rectangular form with scrolled and plaited hair decoration, w. 3.4 cm, together with a yellow metal band ring set paste (2) £40 - £60

922

A 19th century yellow metal ring relief decorated with the name 'Brown', set an old cut diamond in a six claw setting and a small turquoise in a recessed star setting, the interior engraved 'forget-me-not', ring size S 1/2, 5.5 gms £300 - £400



Lot 922

918

An 18ct yellow gold boxlink necklace suspending a Middle Eastern 17ct yellow metal pendant of circular form and depicting the Prophet Muhammad, overall 27.7 gms £550 - £650



Lot 918

923

A 19th century yellow metal ring set five graduated old cut diamonds in a scrolled setting, central stone approximately 0.25 carats, ring size P 1/2, 3.5 gms £250 - £300



Lot 923

924

An 18ct yellow gold signet ring with personalised seal engraving, London 1920, ring size L, 10.6 gms £200 - £250



Lot 919

919

A pair of 18ct yellow gold 'Golden Ellipse' cufflink's by Patek Philippe, overall 26.5 gms, with box and case £1000 - £1500



Lot 924

925

A late 19th/early 20th century ring set five graduated turquoise in a scrolled setting, ring size L, 2.7 gms £40 - £60



Lot 926

926

A late 19th/early 20th century yellow metal target brooch of Etruscan design with memory section verso, d. 3.5 cm, 12.5 gms (af)
£80 - £120

927

A pair of late 19th century yellow metal ear pendants of Etruscan design set oval cabochon banded agate, l. 5.7 cm
£80 - £120

928

A 15ct yellow gold clip, Edinburgh 1923, 1.8 gms, together with a group of yellow metal jewellery comprising a Maltese cross brooch, a cross pendant, a bar brooch and a black velvet choker (5)
£80 - £120

929

A 14ct yellow gold mounted micro mosaic brooch of circular form centrally depicting a swan, d. 2.6 cm (af)
£30 - £40

930

A mixed parcel of silver and metalware jewellery including a Dutch bar brooch modelled as a lions head, w. 5.5 cm, a Britannia Airways pendant necklace, a Chinese bracelet and other items (qty)
£40 - £60

931

A pair of Danish silver ear clips modelled as arum lilies by Aarre & Krogs Eff, together with a matching brooch (3) (af)
£40 - £60

932

A 9ct yellow gold pendant set smoky quartz in an oval setting, l. 3.9 cm, 7.1 gms
£50 - £80

933

A 19th century yellow metal mourning brooch of oval form centrally decorated with seed pearls and hair within a scrolled border, w. 6.8 cm
£80 - £120

934

A 9ct yellow gold clip of diamond shaped form set nine oval cut garnets and small pearls, w. 2.8 cm, 10 gms
£60 - £80



Lot 934

935

A 15ct yellow gold brooch of Etruscan design set small diamond and pearls, w. 4.6 cm, 5 gms, together with a yellow and white metal brooch set small pearls, 6.3 gms (2)
£60 - £80



936

An 18ct yellow gold oval link bracelet suspending a heart shaped drop set small diamonds, overall 24 gms (af), together with a lobster clasp
£400 - £500

937

An 18ct yellow gold ring set seven diamonds in an inline setting, ring size P, 4 gms
£150 - £200



Lot 937

938

A yellow metal and white metal highlighted ring set three graduated diamonds in a raised scrolled setting, central stone approximately 0.5 carats, ring size O 1/2, 3.4 gms
£1000 - £1500



Lot 938



Lot 939

939

An 18ct yellow gold ring set five graduated brilliant cut diamonds in openwork settings, central stone approximately 0.75 carats, ring size N, 4.4 gms *£1000 - £1500*



Lot 940

940

An 18ct yellow gold ring set dark sapphire and eight small diamonds in a rubover inline setting, Birmingham 1995, ring size N, 4.3 gms *£250 - £300*



Lot 941

941

A yellow metal dress ring set rubies and small pearls in a tiered prunt-type setting, ring size M 1/2, 8.7 gms *£200 - £300*

942

An 18ct yellow gold dress ring set oval purple stone, 7.7 gms, together with four further 9ct yellow gold and yellow metal dress rings, 18 gms, various sizes (5) *£150 - £200*

943

A 9ct yellow gold five bar gatelink bracelet with heart shaped padlock clasp, 20.8 gms *£180 - £220*

944

A yellow metal stick pin set diamond and turquoise, a similar turquoise and pearl pin, two agate examples and two further pins (6) *£50 - £80*

945

A pair of late 19th/early 20th century ear pendants of Etruscan design, each set oval cameo depicting a classical female head and shoulders, l. 3.9 cm, together with two fine 9ct yellow gold necklaces (af) *£80 - £120*

946

A white metal ring set oval jade, together with a pair of pierced jade ear pendants (3) *£80 - £120*

947

A small parcel of jewellery comprising a silver mounted shilling dated 1885, a silver medallion, a pair of silver gilt ear clips, an obsidian bracelet, a brooch and a bracelet (af) *£40 - £60*

948

An 18ct white gold ring set princess cut 'Leo' diamond in a four claw setting, the shoulders each set five small brilliant cut diamonds in a channel setting, central stone 0.34 carats, ring size M, 3.3 gms *£500 - £800*



Lot 948



Lot 949

949

A pair of yellow metal ear studs, each set a single sapphire and ten brilliant cut diamonds, d. 1 cm, overall 2.4 gms *£500 - £700*

950

A double strand continuous cultured pearl necklace with 9ct yellow gold clasp of starburst form set seed pearls, l. 42 cm *£150 - £200*



Lot 951

951

An 18ct yellow gold cluster ring set nine brilliant cut diamonds, central stone approximately 0.25 carats, ring size P, 5.3 gms *£300 - £400*

952

A white metal ring set single brilliant cut diamond in an eight claw setting, the shoulders each set a further smaller diamond, central stone approximately 0.25 carats, ring size M, 2.4 gms *£120 - £150*

953

An 18ct yellow gold ring set single brilliant cut diamond in a six claw setting, stone approximately 0.25 carats, ring size K, 3 gms *£120 - £150*

954

An 18ct yellow gold ring set single brilliant cut diamond in an eight claw setting, stone approximately 0.25 carats, ring size K, 2.4 gms *£120 - £150*

955

A 9ct yellow gold dress ring set oval obsidian within a ropetwist setting, ring size O, 3.4 gms *£30 - £40*

956

A Sporrang & Co., Sweden gilt metal and enamelled badge decorated with a crest within a rococo design mount, w. 3.8 cm, a yellow metal wishbone ring and a pair of 10ct yellow gold links set jade-type stone (4) *£30 - £40*

957

A Tiffany & Co. 18ct white gold full eternity ring set a band of small brilliant cut diamonds, boxed, ring size K, 2.7 gms *£500 - £700*



Lot 957

958

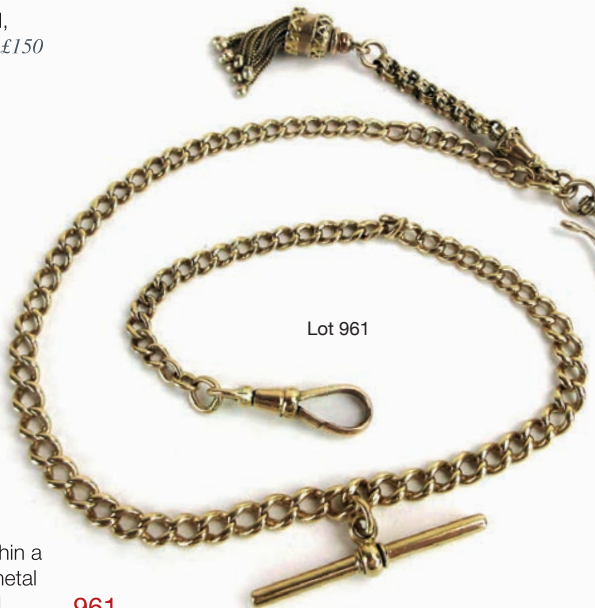
An 18ct yellow gold ring set small diamond in an illusion setting, a 9ct yellow gold signet ring and a yellow metal ring set forget-me-not cameo, various sizes, overall 7.8 gms (3) *£80 - £120*

959

Two 22ct yellow gold wedding bands, Birmingham 1945 & 1950, various sizes, overall, 9.1 gms (2) *£200 - £250*

960

A 10ct yellow gold chain and ball link necklace suspending a 15ct yellow gold circular locket, d. 2.6 cm, overall 12.3 gms *£180 - £220*



Lot 961

961

A 9ct yellow gold Albert watch chain with t-bar and lobster clasp and suspending a tassel, overall 25.7 gms *£250 - £300*

962

A faux amber bead necklace, an amethyst bead necklace and a hardstone necklace (3) *£30 - £40*

963

A 9ct yellow gold mounted oval cameo brooch depicting a classical female figure head and shoulders, l. 4.3 cm, together with a pair of 9ct yellow gold dress studs (3) *£50 - £80*



Lot 964

964

A 14ct yellow gold ring set brilliant cut diamonds and a pair of dark sapphires in a raised inline setting, central stone approximately 0.5 carats, ring size L, 4.3 gms *£500 - £700*

965

A 9ct yellow gold ring set ruby and diamond cluster, the shoulders each set three further rubies, ring size Q, 3 gms *£60 - £100*

966

An 18ct yellow gold ring set pale oval opal and diamond cluster, ring size S 1/2, 4.5 gms *£150 - £200*

967

A 14ct white gold ring set five diamond clusters within two rows of smaller diamonds, ring size N 1/2, 5.4 gms *£150 - £200*



Lot 967

968

An 18ct white gold ring set brilliant cut diamond in an eight claw setting, the shoulders each set two smaller diamonds, central stone approximately 0.5 carats, ring size P, 2.9 gms *£350 - £400*



Lot 969

969

An 18ct white gold ring set three brilliant cut diamonds in an inline setting, ring size O 1/2, 3.9 gms *£100 - £150*



Lot 969

970

An 18ct white gold ring set three graduated diamonds within an oval border of smaller diamonds in the Belle Epoque manner, ring size R 1/2, 3.7 gms *£80 - £120*



Lot 971

971

An 18ct white gold ring set diamonds in a square shaped setting in the Belle Epoque manner, ring size R, 6.4 gms *£150 - £200*

972

An early/mid 20th century Tiffany & Co. jewellery box, w. 7 cm *£20 - £30*



Lot 973

973

A yellow metal college-type ring relief and enamel decorated with a South American figure and symbols, ring size S, 19.4 gms *£300 - £400*

974

A yellow metal mounted double row hardstone bracelet, a small 19th century enamel decorated brooch set rose cut diamonds, w. 1.8 cm and a yellow metal cluster ring set citrine and seed pearls (af) (3) *£150 - £200*

975

A mixed parcel of silver and metalware jewellery including a pierced belt, a South American bracelet repousse decorated with figures and llamas, filigree work bracelets and other items (qty) *£60 - £100*

976

A jewellery box containing a quantity of costume jewellery including brooches, rings, beaded necklaces and many other items (qty) £40 - £60

977

A pair of 18ct yellow gold engine turned cufflink's of hexagonal form, 8.7 gms, together with a group of dress studs £150 - £200

978

A yellow metal ring set cabochon oval jade in a surround of small pearls, ring size P, together with a pair of matching ear studs, overall 10.1 gms (3) £150 - £200

979 - 1000

Spare Lots



1001

A ladies 9ct white gold manual wind wristwatch by Bueche Girod, the rectangular dial with black baton and Roman numerals on an articulated bark design strap, dial w. 2 cm, overall 49.8 gms, boxed £400 - £500

1002

A ladies 18ct yellow gold cased automatic wristwatch by MuDu, the circular dial with baton and Arabic numerals on a 9ct yellow gold bracelet strap, dial d. 1.4 cm, overall 17.1 gms £120 - £150

1003

A ladies 18ct yellow gold cased automatic wristwatch by MuDu, the circular dial with baton and Arabic numerals on a 9ct yellow gold bracelet strap, dial d. 1.2 cm, overall 10.2 gms £80 - £120



Lot 1004

1004

A gentleman's yellow metal automatic wristwatch by Omega, the circular silvered dial with gold coloured baton numerals on a later brown leather bracelet strap, dial d. 2.7 cm £300 - £350

1005

A gentleman's yellow metal automatic 'Incabloc' wristwatch by Rotary, the circular silvered dial with gold coloured baton and Arabic numerals on a later expanding bracelet strap, dial d. 2.7 cm £200 - £300

1006

A ladies part 9ct white gold cocktail wristwatch by Longines, the circular dial with baton numerals within a diamond set mount on an articulated bracelet strap, dial d. 1.1 cm, overall 16.1 gms (af) £100 - £150

1007

A ladies 9ct yellow gold manual wind wristwatch by Caravelle, the circular dial with baton numerals on an articulated bracelet strap, dial d. 1.2 cm, 16.6 gms £120 - £150



Lot 1005

1008

A gentleman's part 9ct yellow gold manual wind wristwatch by Accurist, the circular dial with black Roman numerals and second hand section on a later plated articulated bracelet strap, dial d. 2.4 cm *£60 - £80*

1009

A ladies 9ct yellow gold wristwatch, the circular dial with black Arabic numerals within an octagonal case on an expanding bracelet strap, dial d. 1.7 cm, overall 25.2 gms *£150 - £200*

1010

A ladies 9ct yellow gold manual wind wristwatch by Record, the square dial with gold coloured Arabic and baton numerals on an articulated bracelet strap, dial w. 1.1 cm, 14.8 gms, together with a yellow metal bar brooch (2) *£150 - £200*

1011

A ladies 9ct yellow gold wristwatch by Rotary, the oval dial with gold coloured baton numerals on an articulated bracelet strap, dial w. 1.5 cm, 14.8 gms *£40 - £60*

1012

A gentleman's stainless steel automatic 'Seamaster' wristwatch by Omega, the circular gold coloured dial with baton numerals on an articulated bracelet strap, dial d. 2.7 cm *£200 - £300*

1013

A gentleman's 9ct yellow gold automatic wristwatch by Omega, the circular dial with baton numerals on a later leather strap, dial d. 2.8 cm *£120 - £150*



Lot 1012



Lot 1014

1014

A gentleman's stainless steel automatic wristwatch by Mont Blanc, the rectangular dial with luminous markers, date aperture and subsidiary dials on a brown leather strap, dial w. 2.5 cm *£300 - £400*



Lot 1015

1015

A ladies two colour stainless steel automatic 'Aquracer' wristwatch by Tag Heuer, the circular mother of pearl dial with baton numerals and date aperture on an articulated bracelet strap, dial d. 1.9 cm *£200 - £300*

1016

A ladies 9ct yellow gold manual wind wristwatch by Peerex, the circular dial with baton and Arabic numerals and second hand on an articulated bracelet strap, dial d. 1.7 cm, 23 gms, together with a further part gold wristwatch (2) *£120 - £150*

1017

A ladies 9ct yellow gold automatic 'Stylist' wristwatch by Tissot, the square dial with baton numerals on an articulated bracelet strap, dial w. 1.5 cm, 23.2 gms, with original guarantee dated 1972 *£150 - £200*



Lot 1021

1018

A gentleman's yellow metal wristwatch, the white enamel dial with black Arabic numerals and second hand section on a later leather strap, dial d. 2.7 cm (converted) *£80 - £120*

1021

A two colour stainless steel cased gentleman's 'Conquest' wristwatch by Longines, the circular white dial with gold coloured dot and Arabic numerals on an articulated bracelet strap, dial d. 2.7 cm, with box and guarantee dated 2005 *£100 - £150*



Lot 1019

1022

A gentleman's stainless steel and gold plated 'Oyster Quartz Datejust' wristwatch by Rolex, the circular gold coloured dial with baton numerals and date aperture on an articulated bracelet strap, dial d. 3 cm, with guarantee dated 1994, box and papers *£2000 - £2500*

1019

A gentleman's 18ct yellow gold dress watch by Chopard, the circular dial with baton numerals on an articulated bracelet strap, dial d. 2.8 cm *£1500 - £1800*

1023

A ladies stainless steel 'VIII Christal' wristwatch by Dior, the circular red dial with Arabic and diamond markers, date aperture and subsidiary dials within a diamond set bezel on a red bracelet strap, dial d. 2.9 cm, with guarantee card dated 2014 and box *£800 - £1200*

1020

A gentleman's yellow metal 'National 17' manual wind wristwatch by Smiths Astral, the circular dial with Arabic and baton numerals on a later leather strap, dial d. 2.7 cm, with Garrard box and case *£100 - £150*



Lot 1023



Lot 1022



Lot 1024

1024

A ladies stainless steel wristwatch by Versace, the narrow rectangular mother of pearl dial with silvered Roman numerals within a diamond set bezel on a black faux crocodile skin strap, dial w. 3.1 cm, boxed £500 - £700



1026

A ladies stainless steel wristwatch by Versace, the circular black dial with diamond markers within a Grecian key design bezel on stainless steel bracelet strap, dial d. 2.4 cm, boxed £200 - £300



1025

A ladies stainless steel wristwatch by Versace, the narrow rectangular pink mother of pearl dial with silvered baton numerals within a diamond set bezel on a pale pink faux crocodile skin strap, dial w. 3.4 cm, boxed £1000 - £1200

1027

A gentleman's stainless steel wristwatch by Versace, the circular white dial with silvered baton numerals, date aperture and subsidiary dial on an articulated bracelet strap, dial d. 2.8 cm, boxed £200 - £300



Lot 1027

Next Jewellery & Watches Auction

Friday 6th September 2019 - Bedford Auction Centre

www.peacockauction.co.uk



Lot 1028

1028

A gentleman's stainless steel wristwatch by Versace, the rectangular black dial with silvered Arabic and baton numerals and date aperture on a black carbon fibre-style strap, dial w. 2.4 cm, boxed *£250 - £350*



Lot 1029

1029

A ladies stainless steel 'Hampton City' quartz wristwatch by Baume & Mercier, the tonneau shaped silvered dial with sparse numerals on an articulated bracelet strap, dial w. 2.4 cm, boxed *£300 - £400*



Lot 1030

1030

A gentleman's stainless steel 'Hampton City' automatic wristwatch by Baume & Mercier, the tonneau shaped grey dial with sparse numerals on a black faux crocodile skin strap, dial w. 3 cm, boxed *£300 - £400*



Lot 1031

1031

A gentleman's stainless steel and gold plated '2000 Exclusive' wristwatch by Tag Heuer, the circular silvered dial with gold coloured Arabic and baton numerals and date aperture on an articulated bracelet strap, dial d. 2.5 cm, boxed *£300 - £400*



1032

A ladies stainless steel and gold plated 'De Ville' wristwatch by Omega, the circular white dial with gold coloured Roman numerals on an articulated bracelet strap, dial d. 1.9 cm *£600 - £700*



Lot 1033

1033

A gentleman's stainless steel and gold plated 'De Ville' wristwatch by Omega, the circular silvered dial with gold coloured Roman numerals on an articulated bracelet strap, dial d. 2.8 cm
£450 - £550

1035

A gentleman's stainless steel and gold plated 'Automatique' wristwatch by Dreyfuss & Co., the circular copper coloured dial with silvered baton numerals and date aperture on an articulated bracelet strap, dial d. 2.9 cm
£100 - £150

1036

A 9ct yellow gold fob watch, the gilt dial with black Roman numerals within a florally engraved case, dial d. 2.1 cm, later converted to a wristwatch, overall 22.8 gms
£50 - £80

1037

A ladies white metal wristwatch by Hamilton, the circular dial with baton numerals within a diamond set bezel on a later strap, dial d. 2.5 cm, overall 26.4 gms
£150 - £200



Lot 1034

1034

A ladies 'Seamaster' wristwatch Omega, the circular silvered dial with gold coloured baton numerals and date aperture on a brown leather strap, dial d. 1.8 cm
£300 - £400

1038

A ladies stainless steel automatic 'Santos' wristwatch by Les must de Cartier, the circular white dial with black Roman numerals and date aperture within an octagonal case on an articulated bracelet strap, dial d. 2.1 cm, with box and service guarantee dated 1997
£400 - £600



Lot 1038

1039

A unisex stainless steel manual wind wristwatch by Omega, the rectangular silvered dial with baton numerals on a faux crocodile skin strap, dial w. 1.8 cm
£200 - £250





1040

A unisex 18ct yellow gold 'De Ville' wristwatch by Omega, the circular white dial with black Roman numerals on a faux crocodile skin strap, dial d. 2.2 cm, overall 29.9 gms *£800 - £1000*

1041

A unisex two colour stainless steel automatic 'Seamaster Polaris' wristwatch by Omega, the circular grey dial with gold coloured dot markers and date aperture on an articulated bracelet strap, dial d. 2.4 cm *£350 - £400*



Lot 1041

1042

A gentleman's yellow metal manual wind wristwatch by Garrard, the circular white dial with gold coloured Arabic numerals and second hand section on a later leather strap, dial d. 2.8 cm, with box *£80 - £120*

1043

A gentleman's yellow metal 'F300' electronic chronometer wristwatch by Omega, the circular dial with baton numerals and date aperture on a later leather strap, dial d. 2.9 cm *£150 - £200*

1044

An early/mid 20th century ladies stainless steel manual wind wristwatch by Rolex, the circular copper coloured dial with black Arabic numerals and second hand section on a later expanding bracelet strap, case stamped 051597, dial d. 2.2 cm (af) *£120 - £150*

1045

A gentleman's stainless steel wristwatch by J. W. Benson, the circular dial with luminous Arabic numerals and second hand section within a square case on a later leather strap, dial d. 2.6 cm *£30 - £40*

1046

A ladies 9ct yellow gold wristwatch by Bueche-Girod, the cushion shaped dial with a diamond marker at 12 o'clock within a ropetwist border on an articulated bracelet strap, dial w. 1.4 cm, overall 17 gms, cased *£300 - £400*



Lot 1046

1047

A ladies 9ct yellow gold wristwatch by Avia, the circular white dial with Arabic numerals on an articulated bracelet strap, dial d. 1.7 cm, together with two similar wristwatches (3) *£100 - £150*

1048

A ladies 9ct yellow gold manual wind wristwatch by Rotary, the circular mother of pearl dial with black Arabic and baton numerals on an articulated bracelet strap, dial d. 1.3 cm, 14.1 gms £70 - £90

1049

A ladies yellow metal wristwatch movement by Omega, a ladies 9ct yellow gold wristwatch by Pierre Renoir and a gold plated ladies wristwatch by Montine (af) (3) £40 - £60



1050

A gentleman's 9ct yellow gold manual wind 'Royal' wristwatch by Tudor(Rolex), the circular dial with gold coloured Arabic numerals on an articulated bracelet strap, dial d. 2.8 cm, 54.2 gms £600 - £800

1051

A 9ct yellow gold ladies manual wind wristwatch by Rolex, the circular dial with gold coloured Arabic numerals on an articulated bracelet strap, dial d.1.6 cm, 18 gms £300 - £400

1052

A ladies part 18ct yellow gold wristwatch, the circular silvered dial with black Arabic numerals on a later rolled gold expanding bracelet strap, dial d. 1.4 cm, overall 15.6 gms £30 - £50

1053

A ladies 9ct yellow gold wristwatch by Griffon, the circular dial with gold coloured Arabic numerals and second hand section on an articulated bracelet strap, dial d. 1.7 cm, overall 22.5 gms £120 - £150

1054

A ladies 9ct yellow gold wristwatch by Dominex, the rectangular dial with gold coloured Arabic numerals on an articulated bracelet strap, dial w. 1.1 cm, overall 11.8 gms £80 - £120

1055

A ladies 9ct yellow gold wristwatch by Rotary, the circular dial with gold coloured baton numerals on an articulated bracelet strap, dial d. 1.5 cm, overall 17.5 gms £80 - £120

1056

A gentleman's 9ct yellow gold wristwatch by J. W. Benson, the circular dial with Arabic numerals, second hand section and luminous hands on a later leather strap, dial d. 2.4 gms £60 - £80



1057

A ladies part 9ct yellow wristwatch by Record, the circular dial with black Arabic numerals on an expanding bracelet strap, dial d. 1.5 cm, together with a further 14ct yellow gold wristwatch movement by Doxa (2) £80 - £120

1058

A ladies 9ct yellow gold manual wind 'Royal' wristwatch by Tudor(Rolex), the circular dial with gold coloured baton numerals on an articulated bracelet strap, dial d. 1.1 cm, 14.82 gms £120 - £150

1059

A gentleman's stainless steel cased wristwatch by Baume & Mercier, another by Roamer and three further ladies and gentlemen's wristwatches (5) £50 - £80

1060

A 9ct yellow gold ladies manual wind wristwatch by Rolex, the circular dial with gold coloured Arabic and baton numerals and second hand section within an octagonal case on an articulated bracelet strap, case numbered 48605 3468, dial w.1.8 cm, 16.4 gms £250 - £300

1061

A gentleman's stainless steel 'Blue Angels WR100' wristwatch by Citizen, the circular navy dial with digital display and subsidiary dials on an articulated bracelet strap, dial d. 2.9 cm £60 - £80

1062

A gentleman's stainless steel 'Formula 1 alarm' automatic wristwatch by Tag Heuer, the circular black dial with silvered baton numerals and date aperture on an articulated bracelet strap, dial d. 2.9 cm £300 - £400

1063

A ladies 9ct yellow gold manual wind wristwatch, the white enamel dial with black and red Arabic numerals and gold coloured minute markers on an expanding bracelet strap, dial d. 2.3 cm, overall 26.5 gms £80 - £120



1064

A ladies stainless steel cased 'Glissade' quartz wristwatch by Hermès, the sliding cover opening to reveal a rectangular dial with dot markers on a black leather strap, dial w. 1.6 cm, case numbered GL1.510 1985198 £200 - £300



Lot 1060



Lot 1062

1065 - 1070

Spare Lots

1071

A base metal cased open face 'Railway Timekeeper' pocket watch, the white enamel dial with black Roman numerals and reverse second hand section within an engine turned case on a silver curb link watch chain, dial d. 4.2 cm

£60 - £100



1072

A base metal pair case pocket watch by James Wilson, the white enamel dial with black Roman and Arabic numerals within a plain case, the outer case with starburst decoration, the gilt metal movement with verge escapement and fusee chain, numbered 1300, dial d. 3.4 cm (af)

£200 - £300

1073

A base metal cased open face dress pocket watch by Omega, the white enamel dial with black Arabic numerals and second hand section within a plain case, suspended on a silver fancy link watch chain with medallion, dial d. 4.1 cm

£80 - £120

1074

A gold plated open face dress pocket watch by Midilux, dial d. 3.7 cm, a base metal Railway timekeeper watch and chain, a silver cased fob watch, a Carrs silver bedside timepiece and a wooden watch box (5)

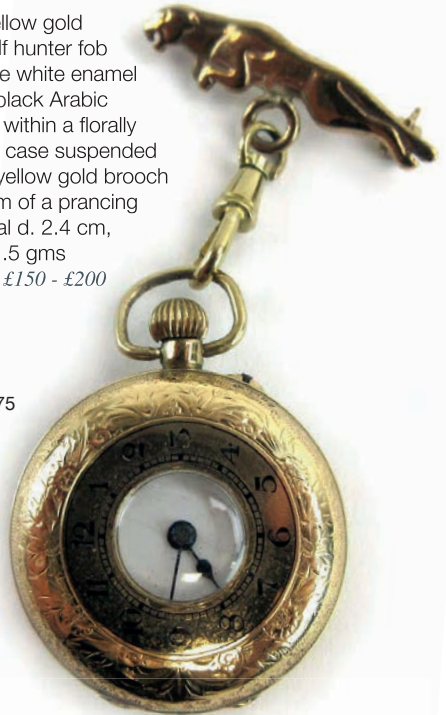
£80 - £120

1075

A 12ct yellow gold cased half hunter fob watch, the white enamel dial with black Arabic numerals within a florally engraved case suspended on a 9ct yellow gold brooch in the form of a prancing jaguar, dial d. 2.4 cm, overall 21.5 gms

£150 - £200

Lot 1075



Lot 1077

1076

An 18ct yellow gold cased open face fob watch, the white enamel dial with black Arabic numerals within a florally engraved case suspended on a 9ct yellow gold bow brooch, dial d. 2.2 gms, overall 21 gms *£120 - £150*

1077

An 18ct yellow gold cased full hunter fob watch, the white enamel dial with black Roman numerals within a florally engraved case, dial d. 3 cm, overall 41.8 gms *£300 - £400*

1078

An 18ct yellow gold florally engraved watch case, d. 3.3 cm, 7.3 gms *£120 - £150*

1079

A 9ct yellow gold curb link watch chain with lobster clasps and t-bar, 35 gms *£300 - £400*

1080

A 12.5ct yellow gold cased open face pocket watch, the white enamel dial with black Roman numerals and second hand section within a plain case suspended on a 9ct yellow gold double Albert watch chain with lobster clasp, t-bar and swivel fob, dial d. 4 cm, overall 111.1 gms *£500 - £700*

1081

A Victorian silver cased open face pocket watch, the white enamel dial with black Roman numerals and second hand section within a plain case, hallmarked for London 1870, dial d. 4.4 cm, together with a similar watch, a watch chain suspending a sovereign/vesta case and a silver identity bracelet (4) *£80 - £120*

1082

A Victorian silver cased open face pocket watch by Waltham, the white enamel dial with black Roman numerals and second hand section within an engine turned case hallmarked for Birmingham 1878, dial d. 4.3 cm *£40 - £60*

1083

A Victorian silver cased open face fob watch, the white enamel dial with black Roman numerals within an engine turned case hallmarked for London 1885, dial d. 2.9 cm, together with a silver fine curb link watch chain with lobster clasps, t-bar, medallion and seal, housed within a fitted case *£40 - £60*

1084

A Victorian silver cased open face pocket watch, the white enamel dial with black Roman numerals and second hand section within an engine turned case hallmarked for Birmingham 1884, dial d. 3.8 cm *£30 - £40*

1085

A Victorian silver cased open face pocket watch, the dial engraved with a country house setting with gold coloured Roman numerals and second hand section within an engine turned cased hallmarked for London 1876, dial d. 4.3 cm *£60 - £80*



Lot 1080

1086

A Victorian silver cased fob watch, the white enamel dial with black Roman numerals within a florally engraved case hallmarked for Birmingham 1885, dial d. 2.9 cm, together with a similar fob watch, a base metal fob watch and a watch chain (4) *£40 - £60*

1087

A silver cased open face dress pocket watch, the white enamel dial with black Arabic numerals and second hand section within a plain case, dial d. 4.1 cm, together with five further pocket watches (6) *£80 - £120*



1088

A 9ct yellow gold cased open face half hunter pocket watch by Record, the white enamel dial with black Arabic numerals and second hand section within a plain case hallmarked for Chester 1929, dial d. 4.1 cm, overall 85 gms, together with a gold plated watch chain *£250 - £300*

1089

A yellow metal cased full hunter fob watch by Illinois, the white enamel dial with black and red Arabic numerals and second hand section within a florally engraved case, dial d. 2.7 cm *£60 - £100*

1090

A gold plated open face quartz pocket watch by Roamer, the white dial with black Arabic numerals and date aperture within a plain case, dial d. 4.1 cm *£10 - £20*

1091

A silver cased open face pocket watch by J. W. Benson, the white enamel dial with black Roman numerals and second hand section within a plain case hallmarked for London 1931, dial d. 3.9 cm, housed in its original case, together with a gold plated watch chain *£50 - £80*

1092

A Continental silver cased open face fob watch, the white enamel dial with red Roman numerals and gilt foliate decoration within a florally engraved case and suspended on a chainlink watch chain, dial d. 3.1 cm *£50 - £80*

1093

A silver cased open face pocket watch by Kendal & Dent, the white enamel dial with black Roman numerals and second hand section, case hallmarked for Birmingham 1913, dial d. 4.2 cm, together with a James Walker base metal cased dress watch (2) *£30 - £40*

1094

A 14ct yellow gold open face fob watch, the white enamel dial with blue Arabic numerals and foliate decoration within a florally engraved case, dial d. 2.3 cm *£60 - £80*

1095

A yellow metal fancy link watch chain with lobster clasp, t-bar and suspending a compass fob, overall 34.1 gms *£250 - £300*

1096

An early 19th century silver pair cased open face pocket watch, the white enamel dial with black Roman numerals within plain cases, hallmarked for London 1823, the pierced gilt movement with verge escapement and fusee chain, dial d. 4.4 cm *£100 - £150*

1097

A 19th century silver pair cased open face pocket watch, the white enamel dial with black Roman numerals within plain cases, hallmarked for London 1869, the pierced gilt movement with verge escapement and fusee chain numbered 3655, dial d. 4.2 cm *£100 - £150*

1098

An early 19th century silver pair cased open face pocket watch by James Dyson, the white enamel dial with black Roman numerals within plain cases, hallmarked for London 1812, the pierced gilt movement with verge escapement and fusee chain numbered 46682, dial d. 4.6 cm *£100 - £150*



Lot 1095

Hammer Prices - May 2019

1	£60	36	£160	117	£55	154	£30	185	£260	221	£20	305	£170
2	£70	37	£140	118	£35	155	£200	186	£280	222	£50	306	£140
3	£140	38	£50	119	£70	156	£22	187	£260	223	£85	307	£110
4	£120	40	£1,400	120	£120	157	£55	188	£260	251	£50	308	£640
5	£220	42	£500	121	£150	158	£50	189	£300	252	£160	309	£320
6	£180	43	£140	122	£140	159	£170	190	£95	253	£100	310	£150
7	£280	44	£260	123	£110	160	£180	191	£130	254	£35	311	£160
8	£80	45	£20	124	£130	161	£110	192	£110	255	£35	312	£120
9	£130	46	£120	125	£60	162	£30	193	£80	256	£65	313	£90
10	£190	47	£200	126	£85	163	£1,100	194	£130	258	£85	314	£100
11	£35	48	£800	127	£75	164	£50	195	£140	259	£50	315	£190
12	£50	50	£100	128	£70	165	£60	196	£75	260	£75	316	£130
13	£85	51	£45	129	£20	166	£60	197	£120	262	£60	317	£120
14	£130	53	£750	130	£20	167	£460	198	£140	263	£190	318	£95
16	£30	101	£55	132	£90	168	£110	199	£100	264	£110	319	£80
17	£130	102	£80	133	£70	169	£40	200	£65	265	£85	320	£95
18	£45	103	£60	136	£110	170	£75	201	£80	267	£50	321	£75
19	£40	104	£100	139	£14	171	£300	202	£55	268	£280	322	£100
20	£65	105	£120	140	£100	173	£55	204	£22	269	£85	323	£100
21	£65	106	£220	141	£220	174	£10	205	£55	270	£90	324	£100
22	£240	107	£100	143	£85	175	£100	207	£60	283	£30	325	£90
24	£50	108	£75	144	£60	176	£60	209	£30	284	£140	326	£75
27	£50	109	£110	145	£110	177	£120	210	£16	285	£70	327	£85
28	£240	110	£75	146	£90	178	£120	212	£30	292	£140	328	£70
30	£80	111	£45	147	£300	179	£340	213	£20	293	£130	329	£65
31	£75	112	£75	148	£45	180	£320	214	£160	295	£50	330	£100
32	£90	113	£70	149	£45	181	£190	215	£20	301	£110	331	£80
33	£65	114	£75	150	£22	182	£190	216	£60	302	£90	332	£55
34	£260	115	£60	152	£70	183	£70	217	£40	303	£170	333	£85
35	£40	116	£55	153	£140	184	£100	219	£30	304	£110	334	£50

335 £95	380 £65	480 £150	607 £36	661 £50	700 £12	803 £45
336 £65	381 £55	482 £75	610 £20	662 £100	702 £40	804 £35
337 £55	382 £120	483 £55	611 £16	664 £36	703 £55	805 £90
338 £45	383 £170	484 £22	612 £16	665 £24	704 £55	807 £30
339 £55	385 £10	485 £50	613 £16	666 £55	705 £60	808 £100
340 £65	386 £210	486 £280	614 £16	667 £45	706 £26	809 £45
341 £50	387 £750	487 £40	615 £26	668 £45	707 £60	810 £80
342 £50	389 £22	488 £26	616 £24	669 £36	708 £60	811 £10
343 £40	390 £75	489 £32	617 £26	670 £65	709 £20	812 £160
344 £30	393 £55	490 £130	618 £50	671 £55	711 £28	813 £20
345 £40	394 £280	492 £400	619 £65	672 £45	712 £40	814 £30
346 £24	395 £140	493 £30	620 £20	673 £38	713 £28	815 £40
347 £60	396 £80	496 £95	621 £30	674 £85	714 £40	816 £45
349 £80	397 £40	497 £95	623 £140	675 £28	715 £90	817 £120
350 £40	451 £50	498 £30	624 £110	676 £26	716 £130	818 £110
351 £20	452 £45	499 £100	625 £45	677 £45	717 £110	819 £45
352 £110	453 £610	500 £60	631 £16	678 £250	718 £280	820 £100
353 £110	454 £120	502 £36	632 £18	679 £55	719 £100	821 £95
354 £70	455 £55	506 £30	633 £50	680 £55	751 £220	822 £50
355 £150	459 £40	508 £22	634 £220	681 £40	753 £80	823 £60
356 £180	461 £40	515 £460	635 £40	682 £65	756 £60	824 £20
359 £90	466 £120	517 £200	636 £40	683 £700	757 £60	825 £55
360 £150	467 £40	518 £190	637 £22	684 £45	760 £160	826 £35
361 £150	468 £95	521 £190	638 £50	685 £55	761 £60	828 £35
364 £150	469 £70	522 £85	648 £100	686 £50	765 £20	829 £75
365 £160	470 £75	523 £120	649 £100	687 £30	767 £45	830 £30
366 £200	471 £30	524 £110	650 £90	688 £40	769 £45	831 £75
369 £50	472 £38	525 £85	651 £130	689 £120	770 £24	832 £65
370 £50	473 £36	526 £38	654 £120	690 £80	776 £30	
372 £80	474 £60	527 £90	655 £85	691 £60	777 £22	
375 £75	475 £65	601 £160	656 £85	692 £100	781 £40	
376 £28	476 £50	602 £260	657 £70	694 £60	782 £50	
377 £60	477 £30	603 £40	658 £170	696 £80	783 £65	
378 £80	478 £95	604 £20	659 £130	697 £80	784 £100	
379 £160	479 £38	606 £30	660 £180	698 £24	801 £50	

Valuation Service

Should you require valuation advice or wish to consign items for our Fine Art Sales please contact us on 01234 266 366 or email us an image info@peacockauction.co.uk

peacockauction.co.uk



W&H PEACOCK

AUCTIONEERS & VALUERS

Established 1901

Why not visit the Bedford Auction Centre
to enjoy the excitement of a real auction.



Eastcotts Park, Wallis Way, Bedford, MK42 0PE
Tel: 01234 266366 | info@peacockauction.co.uk
www.peacockauction.co.uk



watch us...

visit our website and take a look at our Youtube video to get an understanding of our busy and exciting auction sales and other services we offer.

follow us...

join us on facebook and twitter to keep upto date with forthcoming auctions, events and sale highlights. Our website is packed up to date with current auction details and important information www.peacockauction.co.uk

visit us...

Our saleroom is open for entries Monday to Wednesday, viewing every Friday with our four sales commencing at 10am each Saturday

Auction Highlights



A 19th century Zulu rhinoceros horn knobkerrie of typical form, l. 71.5 cm, 307 grams.

Hammer Price £1,100



A Robert Thompson 'Mouseman' oak box and cover of rectangular form, w. 18 cm

Hammer Price £320

Terms used in this catalogue have the following meanings.

Please note that all statements in this catalogue, regarding authorship, attribution, origin, date, age, provenance and condition are statements of opinion and are not treated as a statement of fact.

1. A N ARTIST

In our opinion, the work is by the artist.

2. ATTRIBUTED TO A N ARTIST

In our opinion, the work is of the period of the artist which may be whole or in part the work of the artist.

3. STUDIO, (CIRCLE OR WORKSHOP) OF A N ARTIST

In our opinion, the work is of the period and closely relates to his style.

4. SCHOOL OF A N ARTIST

In our opinion, the work is by a pupil or a follower of the artist.

5. MANNER OF A N ARTIST

In our opinion, the work is in the style of the artist and is of a later period.

6. AFTER A N ARTIST

In our opinion, this work is a copy of the artist.

7. ASCRIBED TO A N ARTIST

In our opinion, this work is not by the artist, however, previous scholarship has noted this to be a work by the artist.

8. SIGNED (OR DATED)

The work has a signature (or date) which in our opinion is genuine.

9. BEARS SIGNATURE (OR DATE)

The work has a signature (or date) which in our opinion is not authentic.