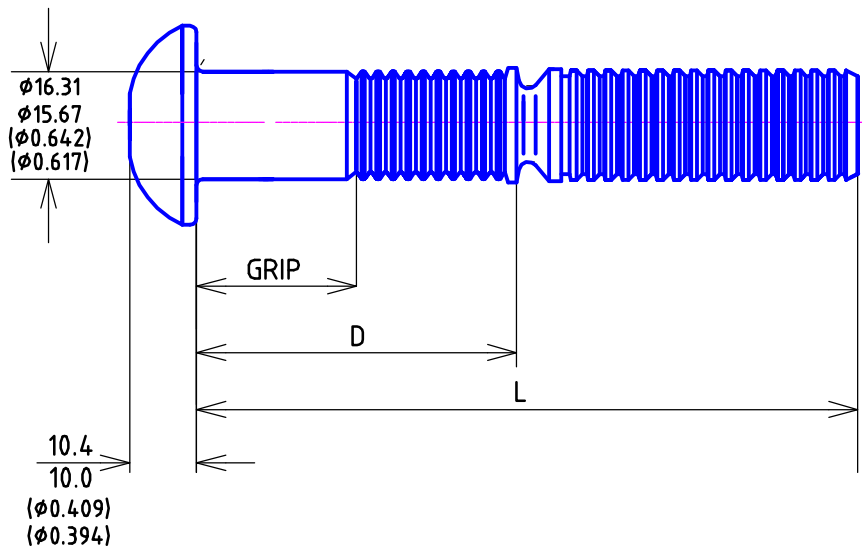
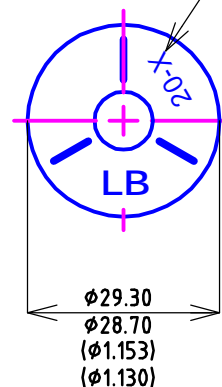


Unit:mm/(inch)



Letter Showing:  
Min-Max Grip Range



**MECHANICAL PROPERTIES:**

Min Ultimate Tensile: 121 (KN)  
 Clamping Load: 85 (KN)  
 Min Shear Strength: 100 (KN)  
 Max Hole Diameter: 17.5 (mm)  
 Max Pin Protrusion: 9.5 (mm)  
 Max Pin Intrusion: 1.6 (mm)

Finish:  
Plain (Black & Oiled)

APPROVED BY CUSTOMER For Manufacture	
Name: _____	Date: _____
Signature: _____	

Raw Material Specification: ALLOY STEEL

5/8"	Part Number	Grip(mm)		Grip(inch)		D(mm)		D(inch)		L(mm)		L(inch)		Head Marking
		Min	Max	Min	Max	Min	Max	Min	Max	Min	Max	Min	Max	
20-04	ERSB20-04	6.35	12.70	0.25	0.50	35.90	36.90	1.42	1.45	91.40	95.90	3.60	3.77	20-4
20-08	ERSB20-08	12.70	19.05	0.50	0.75	42.20	43.20	1.67	1.70	97.70	102.20	3.85	4.02	20-8
20-12	ERSB20-12	19.05	25.40	0.75	1.00	48.60	49.60	1.92	1.95	104.10	108.60	4.10	4.27	20-12
20-16	ERSB20-16	25.40	31.75	1.00	1.25	54.90	55.90	2.17	2.20	110.40	114.90	4.35	4.52	20-16
20-20	ERSB20-20	31.75	38.10	1.25	1.50	61.30	62.30	2.42	2.45	116.80	121.30	4.60	4.77	20-20
20-24	ERSB20-24	38.10	44.45	1.50	1.75	67.60	68.60	2.67	2.70	123.10	127.60	4.85	5.02	20-24
20-28	ERSB20-28	44.45	50.80	1.75	2.00	74.00	75.00	2.92	2.95	129.50	134.00	5.10	5.27	20-28
20-32	ERSB20-32	50.80	57.15	2.00	2.25	80.30	81.30	3.17	3.20	135.80	140.30	5.35	5.52	20-32
20-36	ERSB20-36	57.15	63.50	2.25	2.50	86.70	87.70	3.42	3.45	142.20	146.70	5.60	5.77	20-36
20-40	ERSB20-40	63.50	69.85	2.50	2.75	93.00	94.00	3.67	3.70	148.50	153.00	5.85	6.02	20-40
20-44	ERSB20-44	69.85	76.20	2.75	3.00	99.40	100.40	3.92	3.95	154.90	159.40	6.10	6.27	20-44
20-48	ERSB20-48	76.20	82.55	3.00	3.25	105.70	106.70	4.17	4.20	161.20	165.70	6.35	6.52	20-48
20-52	ERSB20-52	82.55	88.90	3.25	3.50	112.10	113.10	4.41	4.45	167.60	172.10	6.60	6.78	20-52
20-56	ERSB20-56	88.90	95.25	3.50	3.75	118.40	119.40	4.66	4.70	173.90	178.40	6.85	7.02	20-56
20-60	ERSB20-60	95.25	101.60	3.75	4.00	124.80	125.80	4.91	4.95	180.30	184.80	7.10	7.28	20-60
20-64	ERSB20-64	101.60	107.95	4.00	4.25	131.10	132.10	5.16	5.20	186.60	191.10	7.35	7.52	20-64
20-68	ERSB20-68	107.95	114.30	4.25	4.50	137.50	138.50	5.41	5.45	193.00	197.50	7.60	7.78	20-68
20-72	ERSB20-72	114.30	120.65	4.50	4.75	143.80	144.80	5.66	5.70	199.30	203.80	7.85	8.02	20-72
20-76	ERSB20-76	120.65	127.00	4.75	5.00	150.20	151.20	5.91	5.95	205.70	210.20	8.10	8.28	20-76

2013.6.20

No. \_\_\_\_\_ Alternation: \_\_\_\_\_ Date: \_\_\_\_\_ Check: \_\_\_\_\_ Approved: \_\_\_\_\_

Customer:

5/8" Round Head Lock Pins

Customer's P/No.:

Customer's Drawing: