



JAFFA CAKE PRODUCTION FACILITY McVITIE'S, STOCKPORT



Weatherproofing Advisors successfully completed the refurbishment of the iconic Jaffa Cake production facility at the McVitie's factory in Stockport, Manchester.

McVitie's – part of the United Biscuits group – is owned by Pladis, a global leader in the biscuit and confectionary market.

The McVitie's factory in Stockport was established in 1914 during the first world war. In 1927, the company introduced the iconic Jaffa Cake, which has become McVitie's biggest selling product across the world: the production facility at Stockport produces over 42 million Jaffa Cakes every week.

Weatherproofing Advisors was invited to assist McVitie's in the systematic upgrade of numerous roofs across their various production facilities in Stockport. Weatherproofing Advisors carried out detailed condition surveys of every roof area across the site and provided a strategic lifecycle refurbishment plan in line with McVitie's proposed internal building and machinery upgrades programme.

The largest refurbishment project was carried out on the Jaffa Cake production building. The

works consisted of refurbishing the felted roof areas on the raised monitor roofs along with the lower level, pitched, felted sections. The glazing to the monitor roofs was completely removed and replaced with new plastisol-coated, profiled steel cladding panels along with perimeter roof trims in a contrasting colour.

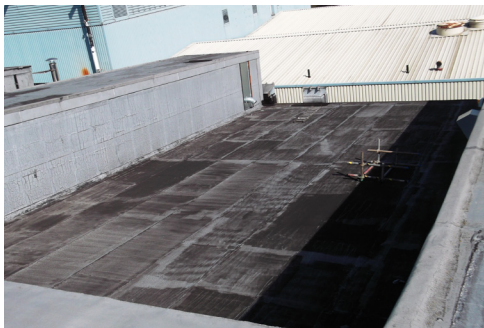
The works on site were complicated by many logistical challenges relating to access and safety protection along with the demands of a 24/7 production operation.

Throughout the contract, the site management team worked very closely with McVitie's project manager and health and safety consultants to ensure that the works were completed safely and within the demanding timescale.

Customer feedback

"I can't praise your lads highly enough. They are the epitome of professionalism in all areas. You should be very proud of them."

—Kirsten Rhodes, McVitie's



LEFT, TOP: DETERIORATED FELT SYSTEM ON MONITOR ROOFS.

LEFT, MIDDLE: VERTICAL GLAZING WAS CAREFULLY REMOVED AND REPLACED WITH A NEW, VERTICAL, PLASTISOL-COATED STEEL CLADDING SYSTEM.

LEFT, BOTTOM: DETERIORATED FELT SYSTEM ON LOWER LEVEL, PITCHED SECTIONS.

MAIN IMAGE AND RIGHT: FINISHED PROJECT.





Setting new standards for the roofing industry

Established over four decades, Weatherproofing Advisors continue to raise the bar with respect to their technical and service capabilities.

Specialising in the maintenance and refurbishment of roofing and cladding, Weatherproofing Advisors have built their enviable reputation around their passion for providing their customers with unparalleled levels of service.

Service the WPA way

Our culture of continual improvement and going the extra mile for our customers and colleagues alike has enabled us to develop a true and lasting partnership with many of our clients.

Our customers say we bring real value to their business – over 93% of our customers said we had provided excellent levels of service in relation to quality of works, health and safety, communications and customer care.

All sectors covered from service centres across the UK

Weatherproofing Advisors Ltd offer both a regional and national capability through their service centres across the UK. We have experience of working in all market sectors and fully appreciate the different demands associated with each.

Good service does not happen by accident.



Glasgow

ADVISOR HOUSE
WEST AVENUE
BLANTYRE INDUSTRIAL ESTATE
BLANTYRE
G72 0UZ

T: 01698 826 928
E: GLASGOW@

Newcastle

ADVISOR HOUSE
ARCHER STREET
ROSEHILL
WALLSEND
NEWCASTLE
NE28 7DJ

T: 0191 263 3553
E: NEWCASTLE@

Merseyside

ADVISOR HOUSE
SANDWASH CLOSE
DIAMOND BUSINESS PARK
RAINFORD
ST HELENS
WA11 8LU

T: 01744 885 885
E: MERSEYSIDE@

Bristol

ADVISOR HOUSE
2430/2440 AZTEC WEST
ALMONDSBURY
BRISTOL
BS32 4AQ

T: 01454 877 540
E: BRISTOL@

London

ADVISOR HOUSE
116–118 STATION ROAD EAST
OXTED
SURREY
RH8 0QA

T: 0203 617 8333
E: LONDON@

weatherproofing.co.uk