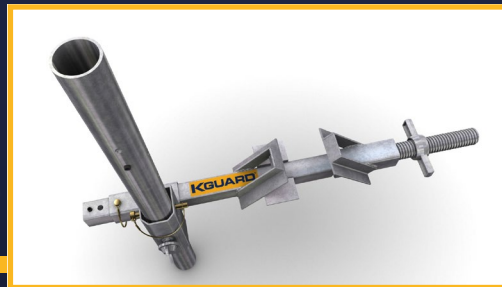
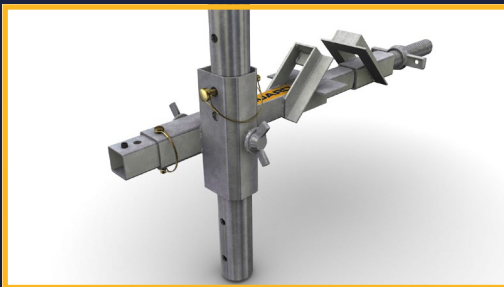


Adjustable I-Beam Clamp



Product:	Code:	Weight:
Adjustable I-Beam Clamp - Maxi	000023	20kg
Adjustable I-Beam Clamp - Standard	000042	14kg

- ◆ Positioned up to 2.4m centres
- ◆ Use of standard Safety Post including K-lock “active” safety system
- ◆ Horizontal & vertical adjustment to suit steel beams to a max height of 1000mm
- ◆ Standard and Maxi Jaw clamp sizes to suit various flanges