

we-ef

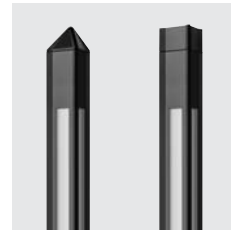
WE-EF LEUCHTEN
General Catalogue
European Edition
2016–2018



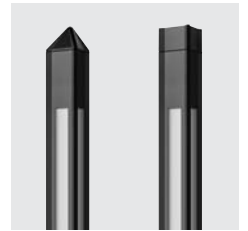
IOS® Beam distributions for light columns

[C60] controlled, symmetric
[] diffused

Light columns



LSP / LTP400 LED 156



LSP / LTP400 158



LTM400 LED 160



LTM / LSM400 162



LTC400 164



LCI400 166



LGI400 168



ACCESSORIES
■ Mounting 170

LSP400 / LTP400 SERIES

Trilight column, three sided light output, diffused distribution, symmetric.

IP44, Class I, IK10. Marine-grade, all aluminium construction. 5CE superior corrosion protection including PCS hardware. Powdercoat finish in RAL 9004, RAL 9006, RAL 9007 or RAL 9016. Silicone rubber gaskets. Prismatic polycarbonate lenses, 3 x 120° offset. Anodised aluminium reflector.

Integral EC electronic converter.

Factory installed LED circuit board. LED boards can be easily removed for upgrading.

Service door with fused cable connecting box.

Light source

LED 37 W, 3000 K,
for 4000 K refer to www.we-ef.com



Accessories

■ Mounting, page 170



Eli and Edythe Broad Art Museum. Michigan State University. East Lansing, Michigan (USA). Architect: Zaha Hadid Architects. Lighting design: ARUP & Peter Basso Associates.

LSP434 / LSP444

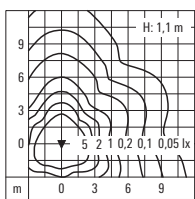


LTP444

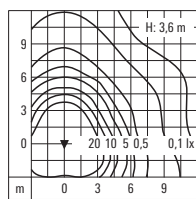


	Part ID	Light source	K	lm*	Factor**	kg
LSP434	116-0212	LED-FT 37 W	3000	5720	1.00	16.9
LSP444	116-0208	LED-FT 37 W	3000	5720	1.00	32.6

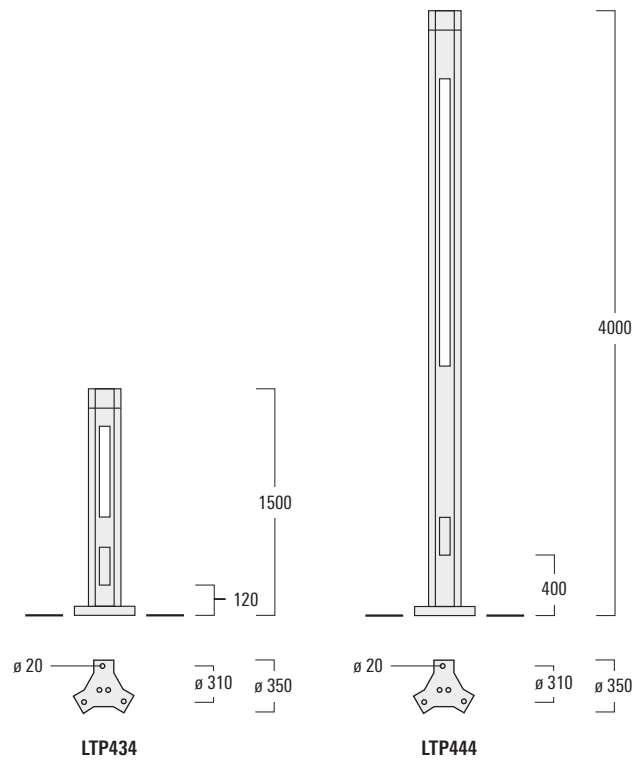
	Part ID	Light source	K	lm*	Factor**	kg
LTP434	116-0210	LED-FT 37 W	3000	5720	1.00	16.9
LTP444	116-0207	LED-FT 37 W	3000	5720	1.00	32.6



LTP434



LTP444



LTP434

LTP444

* Nominal lumen output based on LED manufacturers data at 25°C T_c. For rated lumens at 25°C T_q and latest data refer to www.we-ef.com.

** Multiplier for Isolux value

LSP400 / LTP400 SERIES

Trilight column, three sided light output, diffused distribution, symmetric.

IP44, Class I, IK10. Marine-grade, all aluminium construction. 5CE superior corrosion protection including PCS hardware. Powdercoat finish in RAL 9004, RAL 9006, RAL 9007 or RAL 9016. Silicone rubber gaskets. Prismatic polycarbonate lenses, 3 x 120° offset.

Anodised aluminium reflector.

Integral HPF control gear.

Service door with fused cable connecting box.

Light source
HIT 35-150 W

Accessories
■ Mounting, page 170



South Eastern Busway. Cultural Centre Station. Brisbane (AUS)



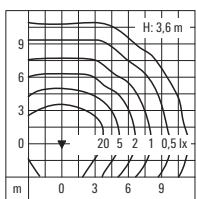
LSP434 / LSP444



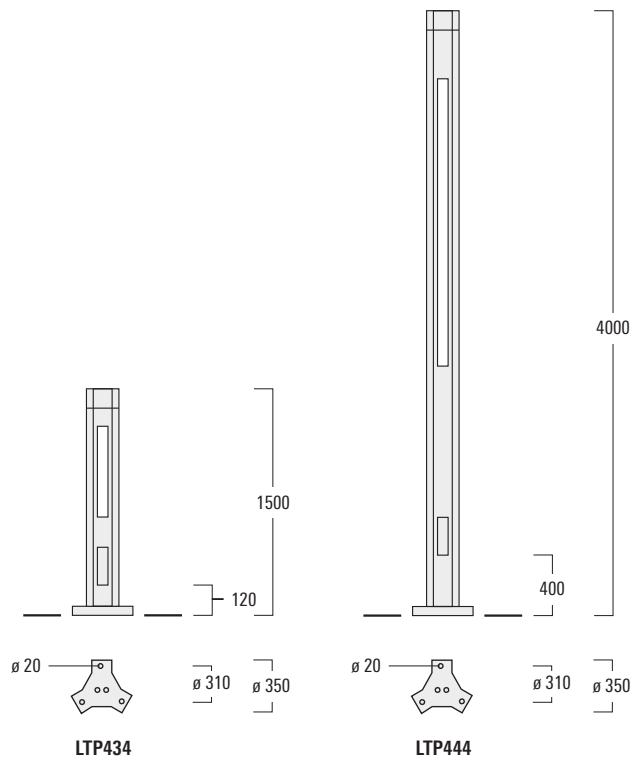
LTP444

Part ID	Light source	lm	Factor*	kg
LSP434	116-0013 [HPF] HIT-CE 35W G12	3600	1.00	16.7
LSP444	116-0050 [HPF] HIT-CE 70W G12	7300	1.00	32.5
	116-0188 [HPF] HIT-CE 100W G12	9500	1.30	32.6
	116-0040 [HPF] HIT-CE 150W G12	15000	2.05	32.8

Part ID	Light source	lm	Factor*	kg
LTP434	116-0087 [HPF] HIT-CE 35W G12	3600	1.00	17.8
LTP444	116-0093 [HPF] HIT-CE 70W G12	7300	1.00	33.6
	116-0187 [HPF] HIT-CE 100W G12	9500	1.30	33.7
	116-0091 [HPF] HIT-CE 150W G12	15000	2.05	33.9



LSP444



LTP434

LTP444

* Multiplier for Isolux value

LTM400 SERIES

Lightspike, controlled distribution, symmetric.

IP55, Class I. IK10. Marine-grade, all aluminium construction. 5CE superior corrosion protection including PCS hardware. Powdercoat finish in RAL 9004, RAL 9006, RAL 9007 or RAL 9016. Silicone rubber gaskets. Polycarbonate main lens.

Integral EC electronic converter.

Factory installed LED circuit board. LED boards can be easily removed for upgrading. PMMA double lens.

Service door with fused cable connecting box.

Light source

LED 17-24 W, 3000 K,
for 4000 K refer to www.we-ef.com

Light distribution

[C60]

Accessories

■ Mounting, page 170

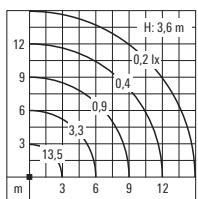


Pier seaside Heiligendamm (D). Lighting design: Institut für Gebäude + Energie + Licht Planung, Prof. Dr.-Ing. Thomas Römhild, Wismar.

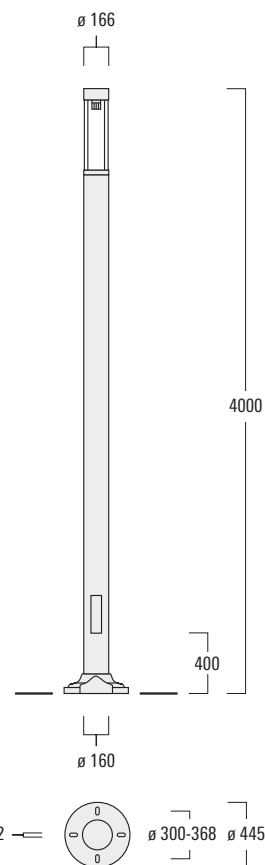


[C60] Controlled distribution, symmetric

[C60]	Part ID	Light source	K	lm*	Factor**	kg
LTM440	115-1227	LED-FT 17W	3000	2800	1.00	25.0
	115-1229	LED-FT 24W	3000	3795	1.36	25.0



[C60]



* Nominal lumen output based on LED manufacturers data at 25°C T_c. For rated lumens at 25°C T_q and latest data refer to www.we-ef.com.

** Multiplier for Isolux value

LSM400 / LTM400 SERIES

Lightspike, shielded light source, symmetric.

IP55, Class I, IK10. Marine-grade, all aluminium construction. 5CE superior corrosion protection including PCS hardware. Powdercoat finish in RAL 9004, RAL 9006, RAL 9007 or RAL 9016. Silicone rubber gaskets. Polycarbonate lens. Anodised aluminium reflector.

Integral HPF and ECG control gear.

Service door with fused cable connecting box.

Light source
HIE 70-100 W

Accessories
■ Mounting, page 170



Dovenshire Square. London (UK). Lighting design: Speirs & Majors Associates.

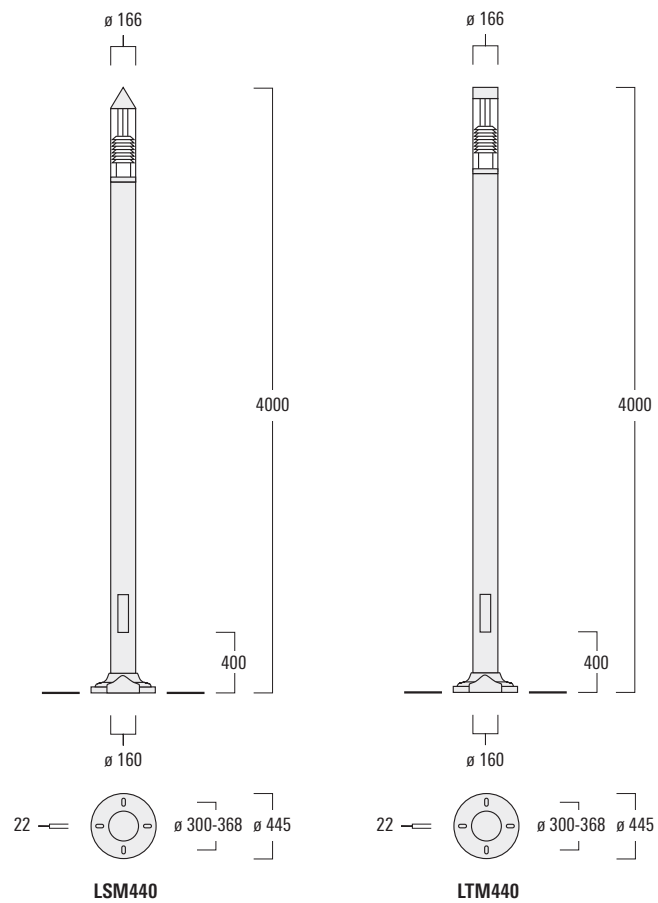


LSM440



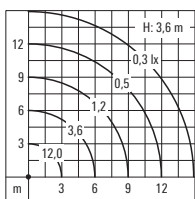
LTM440

	Part ID	Light source	lm	Factor*	kg
LSM440	115-1141 [ECG]	HIE-CE 70W E27	6700	1.00	21.1
	115-1129 [HPF]	HIE-CE 100W E27	8500	1.27	22.5
LTM440	115-1144 [ECG]	HIE-CE 70W E27	6700	1.00	20.9
	115-1133 [HPF]	HIE-CE 100W E27	8500	1.27	22.3



LSM440

LTM440



* Multiplier for Isolux value

LTC400 SERIES

Light column, shielded light source, symmetric.

IP55, Class I, IK10. Marine-grade, all aluminium construction. 5CE superior corrosion protection including PCS hardware. Powdercoat finish in RAL 9004, RAL 9006, RAL 9007 or RAL 9016. Silicone rubber gaskets. Polycarbonate lens.

Reflector and indirect reflector made from anodised aluminium for light control and shielding.

Integral HPF and ECG control gear.

Service door with fused cable connecting box.

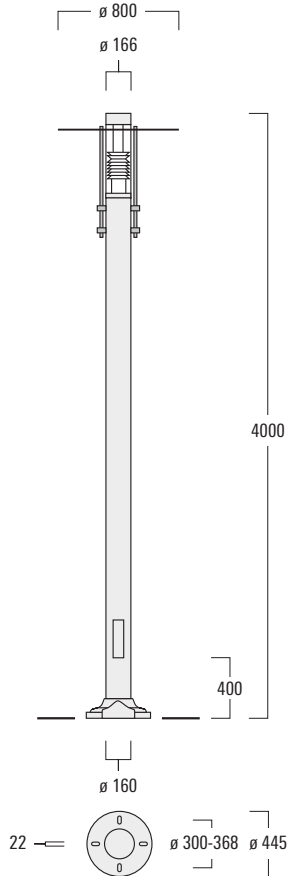
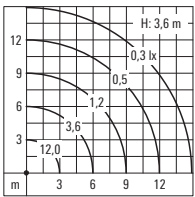
Light source
HIE 70-100 W

Accessories
■ Mounting, page 170





Part ID	Light source	lm	Factor*	kg
LTC440	115-1146 [ECG] HIE-CE 70W E27	6700	1.00	25.7
	115-1110 [HPF] HIE-CE 100W E27	8500	1.27	27.1



* Multiplier for Isolux value

LCI400 SERIES

Light column, indirect distribution, adjustable reflector system.

IP66, Class I, IK08. Marine-grade, all aluminium construction. 5CE superior corrosion protection including PCS hardware. Powdercoat finish in RAL 9004, RAL 9006, RAL 9007 or RAL 9016. Silicone rubber gaskets. Safety glass lens.

Reflector and indirect reflector made from anodised aluminium for light control and shielding. Adjustable from 10°-30°.

ECG control gear, thermally separated.

Service door with fused cable connecting box.

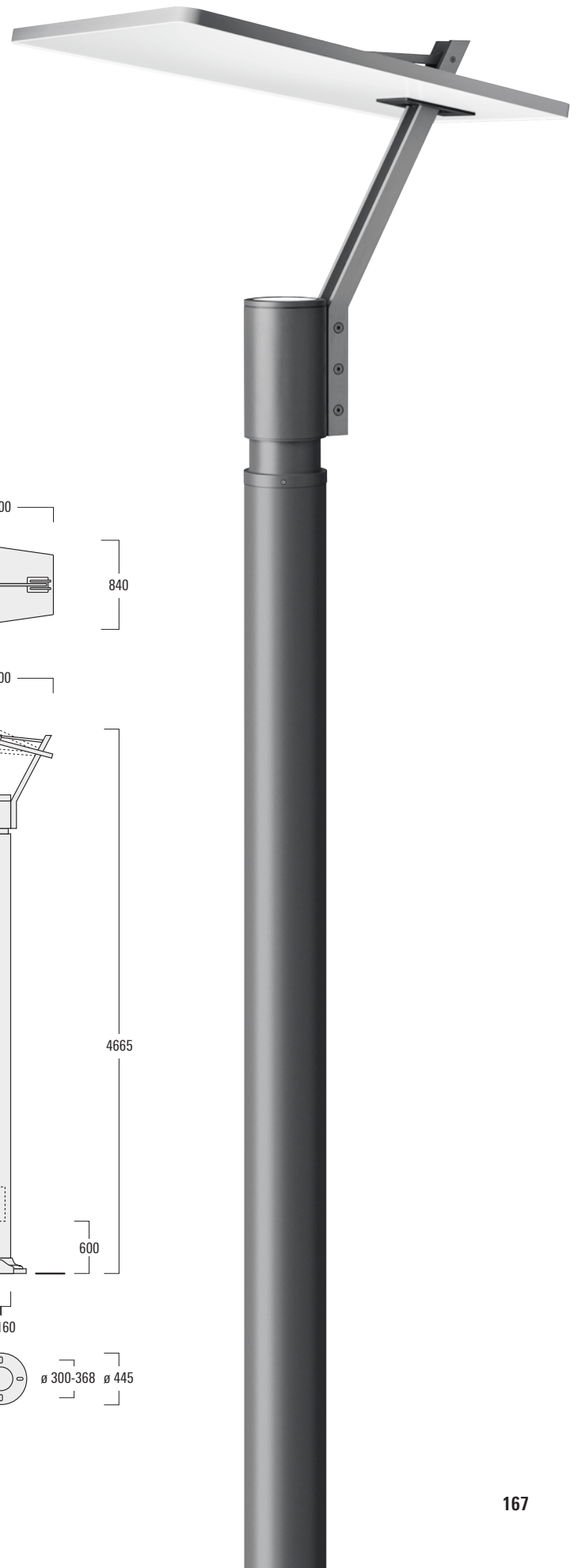
Light source
HIT 70-150 W

Accessories

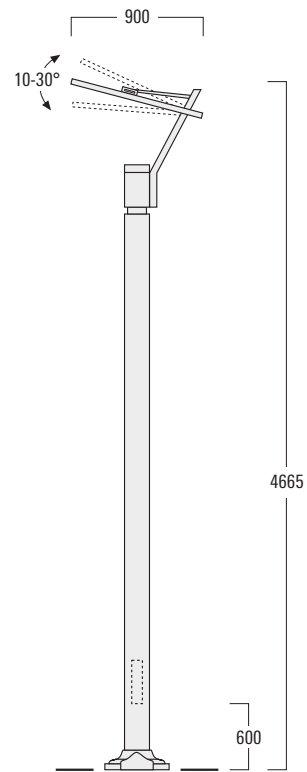
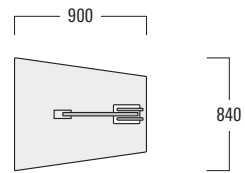
■ Mounting, page 170



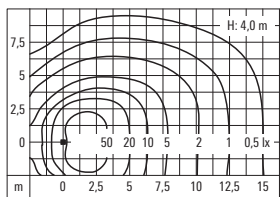
Duderstadt (D)



Part ID	Light source	lm	Factor*	kg
LCI440	118-0045 [ECG] HIT-CE 70W G12	7300	1.00	36.0
	118-0082 [ECG] HIT-CE 100W G12	9500	1.30	37.1
	118-0048 [ECG] HIT-CE 150W G12	15000	2.05	37.2



ø 160



* Multiplier for Isolux value

LGI400 SERIES

Light column, indirect distribution, adjustable reflector system.

IP66, Class I, IK10. Marine-grade, all aluminium construction. 5CE superior corrosion protection including PCS hardware. Powdercoat finish in RAL 9004, RAL 9006, RAL 9007 or RAL 9016. Silicone rubber gaskets. Safety glass lens.

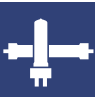
Reflector and indirect reflector made from anodised aluminium for light control and shielding. Adjustable from $\pm 7.5^\circ$.

ECG control gear, thermally separated.

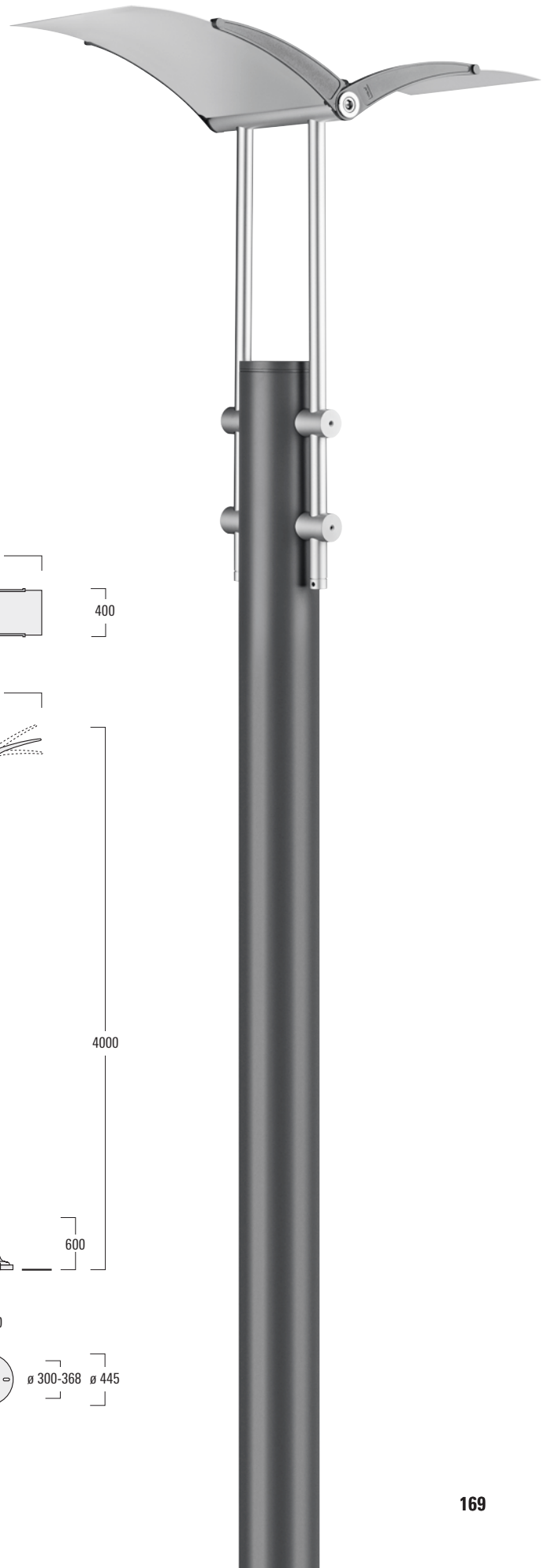
Service door with fused cable connecting box.

Light source
HIT 70-150 W

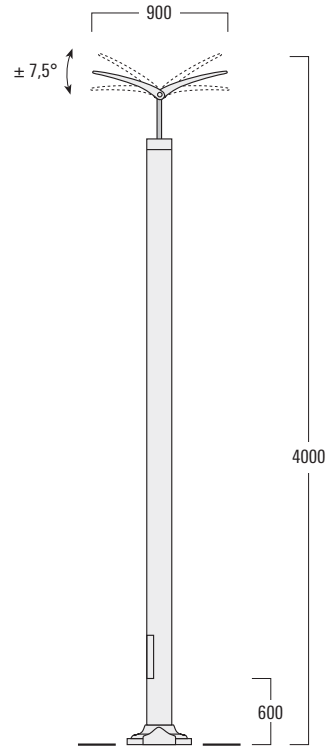
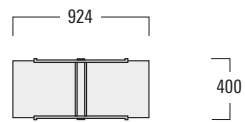
Accessories
■ Mounting, page 170



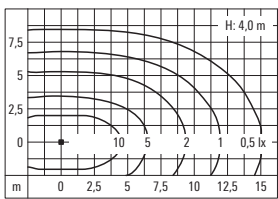
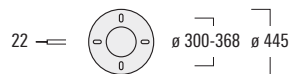
Moora Park Foreshore, Brisbane (AUS). Landscape architect & Lighting design: Neil Ariel, Brisbane City Council Design.



Part ID	Light source	lm	Factor*	kg
LGI440	118-0079 [ECG] HIT-CE 70W G12	7300	1.00	28.5
	118-0084 [ECG] HIT-CE 100W G12	9500	1.30	29.6
	118-0078 [ECG] HIT-CE 150W G12	15000	2.05	29.7



ø 160



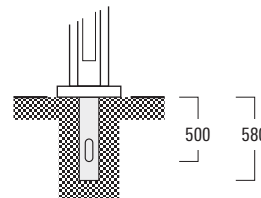
* Multiplier for Isolux value

MOUNTING ACCESSORIES

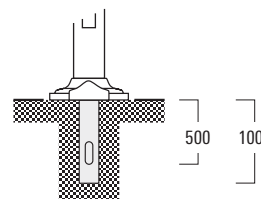
Planted roots

Galvanised steel, for light columns.

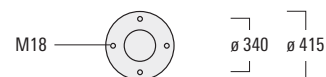
			kg
for LSP / LTP	300-0456	ESD6	10.4
for LSM / LTM / LTC / LCI / LGI	300-0949	ESV10	25.3



Planted root ESD6



Planted root ESV10





Pier seaside Heiligendamm (D). Lighting design: Institut für Gebäude + Energie + Licht Planung, Prof. Dr.-Ing. Thomas Römhild, Wismar.