

COMMERCIAL AND RETAIL



Pan Africa
SHOPPING CENTRE

Pan Africa
SHOPPING CENTRE

SAOTA

GLOBAL REGIONS



SAOTA has a global footprint with projects on 6 continents.

We have a clear understanding of the place of design in the world, and how to design and deliver architectural projects in diverse markets.

COMPANY PROFILE

SAOTA, a leading firm of architects is driven by the dynamic combination of Stefan Antoni, Philip Olmesdahl, Greg Truen, Phillippe Fouché and Mark Bullivant who share a potent vision easily distinguished in their design.

This, paired with both an innovative and dedicated approach to the design, documentation and execution of projects globally, has seen SAOTA become an internationally sought-after brand.

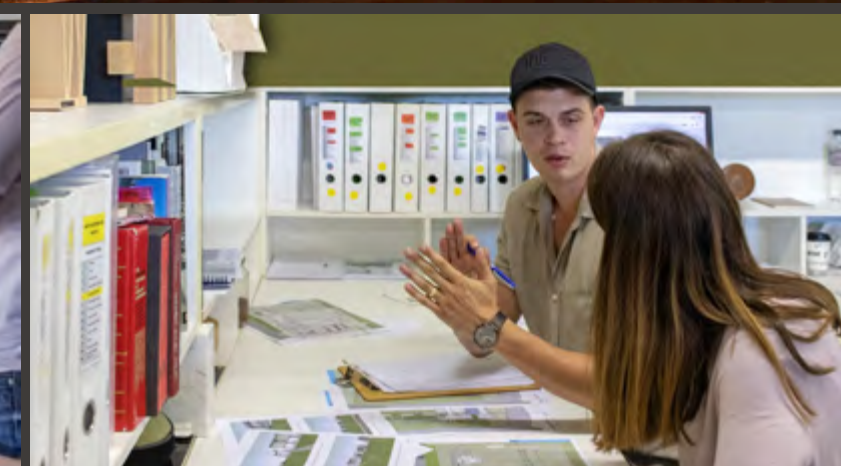
SAOTA has a global footprint with projects on 6 continents. We have a clear understanding of the place of design in the world and how to deliver architectural projects in diverse markets.

This success is driven by a design philosophy that connects function and form, and the pursuit of true architectural design to create appropriate solutions. The focus on achieving maximum value has also led to global invitations to design, build and create highly prestigious projects.

The philosophy of practice is embodied in the spirit of enquiry that flourishes amongst its staff. This spirit not only guides the firm, but enables it to maintain its position as definitive designers in a highly competitive and fast-changing industry. Increased exposure to the global marketplace has seen SAOTA flourish as cities and contexts allow for infinite inspiration which can be seen radiating from the approach to design.

SAOTA is also focused on using the most current computer technology in its design process, both to understand the design and to communicate the design to our clients. To this end we are world leaders in the use of Revit and have also developed virtual reality tools for use in our process.

“We strive to promote a service marked by excellence both in our buildings and in addressing the needs of our clients, with the focus on high standards & elegance.”



COMMERCIAL AND RETAIL

ALEX JUNCTION

Johannesburg South Africa

The site is situated on two parcels of land, bounded by Second Avenue, Third Avenue and Watt Street, and has historically been used as a taxi rank. Alexandra Township is one of South Africa's oldest townships and contributes to many facets of urban life in Johannesburg.

The site is close to the highway and is positioned on the main entry point into Alexandra. Historically there have been shops along Watt Street and Second Avenue and as such the site is the town centre.

Block A houses the holding rank as well as the long-distance rank which connects Alexandra to other towns in Southern Africa. This building also houses the administration facilities of the taxi organisations and has

workshop and washing spaces. Trading stalls face onto the colonnade that runs along Second Avenue.

Block B holds the retail component with its shops, mall space, service basement and the taxi rank. A small square faces onto Third Avenue with a food court facing onto it.

The food court and square connects with the community in a more informal manner; linking the building with its vibrant surroundings.



SAOTA

COMMERCIAL AND RETAIL

KINGSWAY TOWER Lagos Nigeria

SAOTIA

COMMERCIAL AND RETAIL

KINGSWAY TOWER

Lagos Nigeria

A striking office building in a busy commercial area comprising basement parking, ground floor retail and restaurants and offices. The façade is covered by a screen to add both aesthetic value and shading, limiting the amount of direct sunlight.

This iconic tower is positioned within the heart of a busy commercial node in the affluent Ikoyi district in Lagos, Nigeria. The building is designed as a mixed use high rise comprising basement parking, ground floor retail and multi-level offices.

The podium, a bold undulating coffered slab, curves up towards the main entrance corner as if to frame and shelter the restless activity below. The climatically responsive Kingsway Tower is strategically orientated in a north

south position to reduce the solar load. The striking façade consists of an innovative shading screen and greenery along its spine enabling a more controlled interior environment and importantly establishing a distinct aesthetic value to allow the building to maintain a distinct identity in a rapidly transforming surrounding.

STATUS: Under Construction



COMMERCIAL AND RETAIL



IDOWU MARTINS

Lagos Nigeria

SAOTA

COMMERCIAL AND RETAIL

IDOWU MARTINS

Lagos Nigeria

An 18-storey office tower located on Victoria Island, which is a fast developing area for commerce and banking.

The high-rise design responded to the island's history, the surrounds and the climate by utilising a series of sensitively scaled geometries vertically separated by lush planting to mediate the scale of the tall structure.



COMMERCIAL AND RETAIL

KIRSCH PHARMA

Bissendorf Germany

SAOTA

COMMERCIAL AND RETAIL

KIRSCH PHARMA

Bissendorf Germany

A new conceptual design for Kirsch Pharma production site in Bissendorf, Germany. Attention was placed on the different use and detail of materials, textures and transparency to refine the design of each façade.

Tying the components of the production site together with a sculptural canopy element and drawing attention to the arrival point through innovative use of form and lighting.



COMMERCIAL AND RETAIL

BAKU

Baku Azerbaijan

WE ARE ONE

SAOTTA

COMMERCIAL AND RETAIL

BAKU

Baku Azerbaijan

A nine storey apartment building comprising of four levels of apartments and duplex penthouses. It also includes an entertainment area, a spa and business lounges.

The building presents a rich, active and exciting façade to the street whilst respecting the limits of the urban block and thus providing cohesion within the greater urban fabric.

Its façade is layered with visually active architectural screens which both define the limits of the block and provide transparency to the retail and hospitality functions within.

Dramatic openings are carved out of this skin at key entry points to provide generous visual and physical access to the interior.

Once inside the visitor is drawn into a dynamic retail experience fashioned from rich layerings of natural landscaping, growing walls, water-features and multi-level restaurants – all held together around a sculptural central piazza criss-crossed by dramatic bridges.

Natural light floods deep into the interior from a soaring glass-canopy which offers tantalising glimpses of the towering office and residential blocks above.

Dramatically poised above a landscaped podium the tower block rise as dynamic and contemporary urban icons.



COMMERCIAL AND RETAIL

FOCUS Dakar Senegal

SAOTA

COMMERCIAL AND RETAIL

FOCUS

Dakar Senegal

A 5800m² seven story office building for a West African media company (Focus), designed by SAOTA in 2011, offering Basement and Ground Floor parking a restaurant, crèche building and reception on ground floor, office space First to and 7th floor, a 5th floor gym and Focus' private offices and front and rear terraces on the 6th and 7th floors.

The charcoal grey aluminum façade brise soleil on the front and rear façade was inspired by the West African woven cloth.



COMMERCIAL AND RETAIL

APEX

London United Kingdom

SAOTA

COMMERCIAL AND RETAIL

APEX

London United Kingdom

Located in Ealing, London, this high rise residential building has a distinctive silhouette.



COMMERCIAL AND RETAIL



MTN HEADQUARTERS

Abidjan Ivory Coast

SAOTA

COMMERCIAL AND RETAIL

MTN HEADQUARTERS

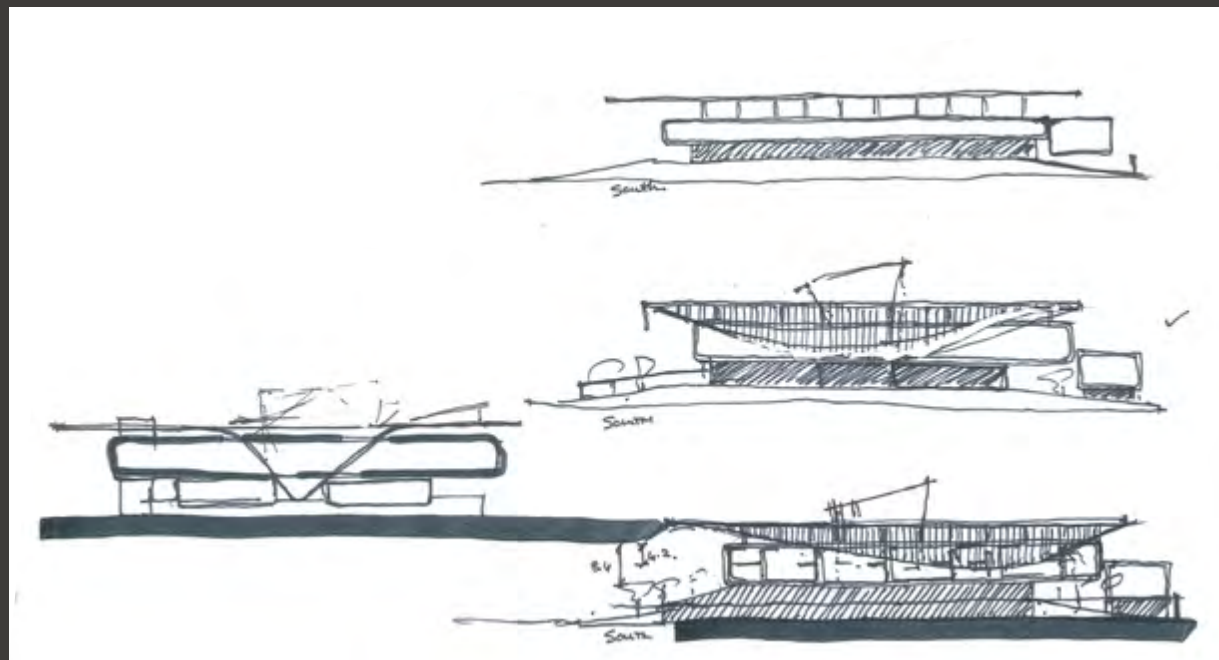
Abidjan Ivory Coast

The architectural design is inspired by its location in the coastal tropical forest region of West Africa where an abundance of trees form continuous forest roof canopies.

Traditionally known as overhanging roof architecture this has been given a contemporary interpretation.

The roof plane is horizontal floating on slender steel columns and covering both contained and external spaces. Covered external spaces become the veranda's or threshold spaces between the interiors and the exteriors.

Even with strong tropical downpours these veranda spaces will be able to be utilised to congregated and relax.



COMMERCIAL AND RETAIL



DT1 Luanda Angola

SAOTA

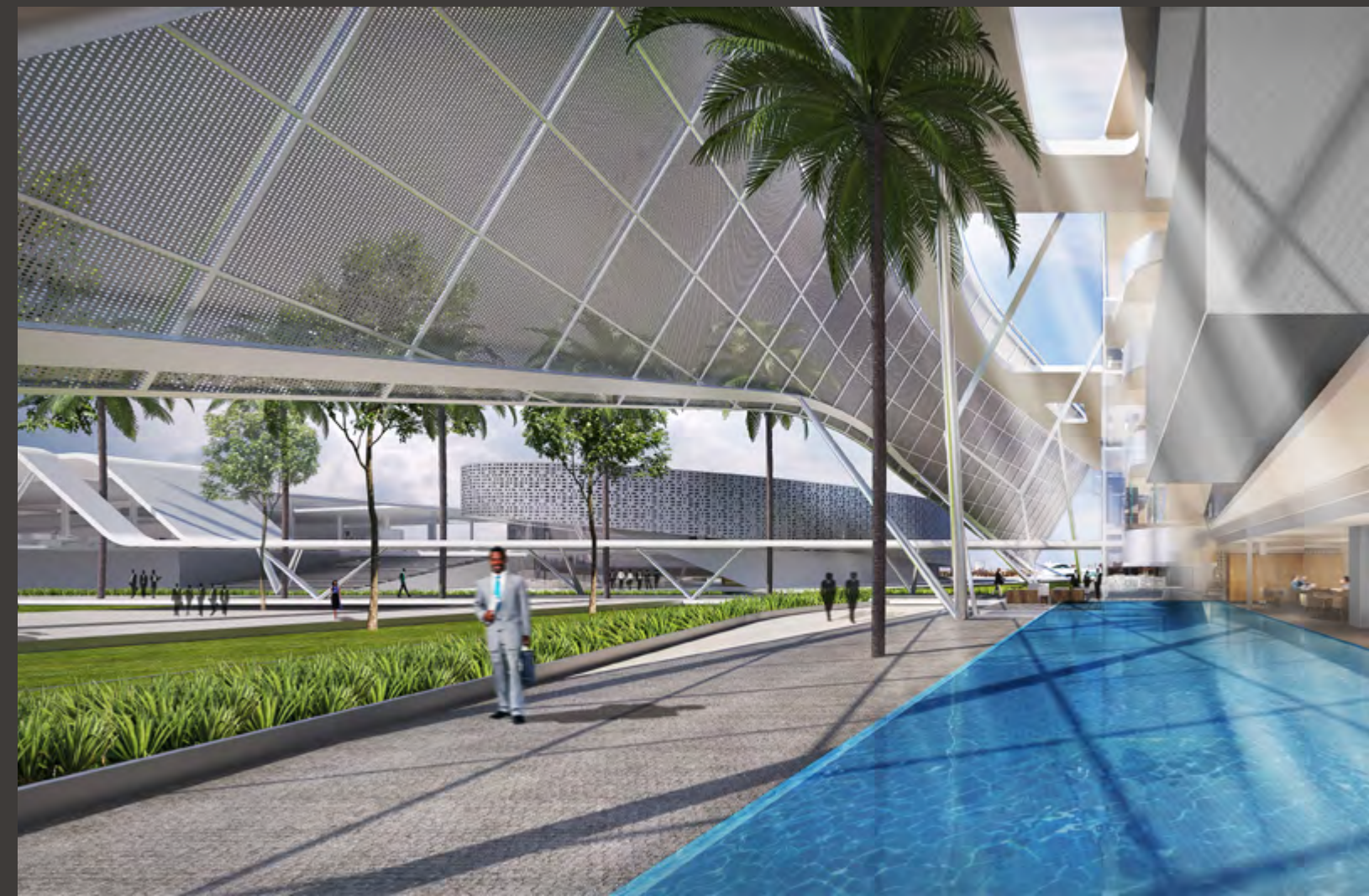
COMMERCIAL AND RETAIL

DT1

Luanda Angola

Situated on a water facing site on the Ilha in Luanda Angola. A Corporate office for an International oil company.

A main level of open plan offices float over a double volume arrival foyer, with public facilities and boardrooms facing the lagoon.



COMMERCIAL AND RETAIL



DT2 Luanda Angola

FAOTA

COMMERCIAL AND RETAIL

DT2

Luanda Angola

An alternate design for company headquarters in Luanda.

Facilities include conferencing, public meeting areas and boardrooms.



COMMERCIAL AND RETAIL



OCULUS

Stockholm Sweden

SKANSKA

COMMERCIAL AND RETAIL

OCULUS

Stockholm Sweden

A boutique hotel coupled with premium penthouse suites right on the water's edge in Sweden.

The design comprises of a stacked block typology that sits on top of a dramatic, planted undulating plinth that creates a walk-able connection from the forest right to the water's edge. The building is entirely punctured with a circular opening that shifts according to the programme of each floor.

This resulted in a dramatic atrium that one experiences at the entrance, and creates a visually interesting oculus that is reminiscent of a camera lens when looking upwards – also allowing for natural light to penetrate deep into the core of the building.



COMMERCIAL AND RETAIL



HATFIELD 109

Cape Town South Africa

SAOTA

COMMERCIAL AND RETAIL

HATFIELD 109

Cape Town South Africa

In the heart of Cape Town, this building was developed to house SAOTA, AA Interiors & OKHA. Incorporating five apartments, with magnificent views, it contributes to the urban rejuvenation of the city centre.

For World Design Capital 2014, 109 Hatfield became a registered WDC project (#524) and in collaboration with iKineo created the Street Museum of Design (SMoD).

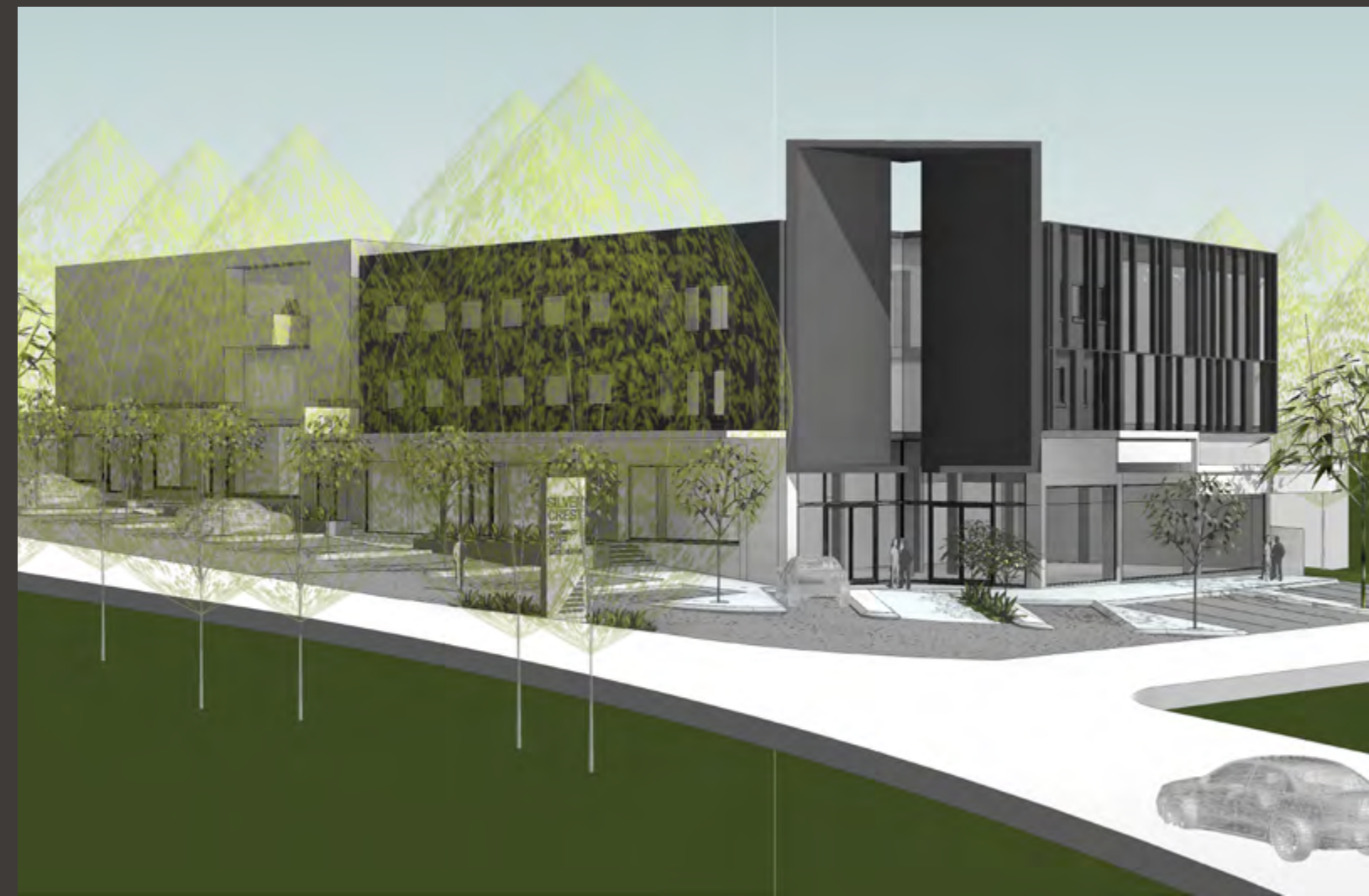


COMMERCIAL AND RETAIL

SILVERCREST

Cape Town South Africa

Uplifting of an existing shopping centre with a new façade.



COMMERCIAL AND RETAIL

AKWA

Douala Cameroon

A mixed use development in downtown Douala with retail, conferencing, offices and a hotel.

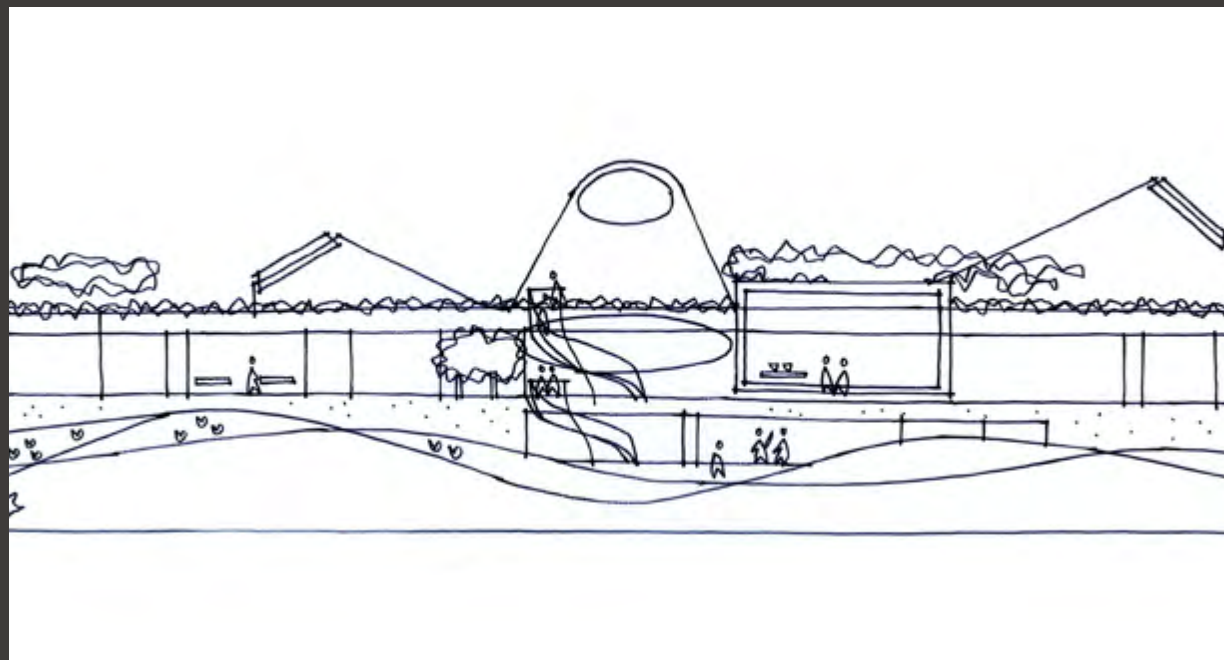


COMMERCIAL AND RETAIL

CLUBHOUSE

Libreville Gabon

Designed for the new Gary Player golf course clubhouse, the building exhibits strong horizontals, interrupted by the environment as it pushes in and through the building mass. This approach produced a design in harmony with the surroundings.



COMMERCIAL AND RETAIL

LEKKI

Lagos Nigeria

In Ikoyi, Lagos, the Sky Mall is a sophisticated lifestyle centre. Open volumes allow ample natural light into the building and the outer skin opens up strategically to reveal views over the lagoon.



SPECIAL CAPABILITIES

DESIGN

Our architectural designers are highly skilled and experienced, allowing schemes to be conceptualised in dynamic, yet legible presentations. The design process can therefore develop swiftly with the precise method of achieving objectives and testing the solutions comprehensively. SAOTA have done a substantial amount of projects abroad and have skills in achieving the project requirements set. The design architects are backed up by an advanced computer aided drawing office capable of detailed 3D analysis and presentation.

TECHNICAL

The office has developed advanced technical skills related to, i) Construction Detailing, ii) Building Services and iii) Contract Administration of projects. Further, in working on projects abroad the office has had experience with multi-disciplinary project teams made up of consultants from companies from various countries.

SYSTEMS

SAOTA have developed advanced systems for co-ordination of the projects across all stages of the architects service. This ensures that client presentations, design reviews, Technical Documentation, Tendering and Contract Administration are managed to the highest quality standards.

SAOTA also uses REVIT, the leading Building Information Modelling (BIM) software available allowing us to develop and document a building in a 3 dimensional environment. Any changes are immediately co-ordinated through the entire documentation package. It also gives us unprecedented control over the co-ordination of structure and services when working with consultants using the same platform.

Lumion is used as an architectural visualization tool which allows us to build a 3D environment and create images of each project. Furthermore impressive video presentations and live walkthroughs are created.

Together with Tenebris Lab Director, Gerard Slee, SAOTA developed LUX Walker, a software enabling designers and clients to experience their designs in virtual reality. It's a workflow tool that renders a realistic, true-to-life scale representation of a 3D model that clients can easily interact with.



SELECTED AWARDS

2019 TIDA International House of the Year	AU Double Bay	2010 MIPIM International Awards - Commendation	SN Dakar Towers
2019 Idea-Tops Global Nomination Award	ZA Kloof 119A	2009 Cape Institute for Architecture	ZA Head 1815
2018 Spice Lifestyle Honors Company of the Year	SAOTA	2009 Cape Institute for Architecture	ZA Victoria 73
2018 SAPOA Award for Innovative Excellence	ZA Clifton Terraces	2009 Cape Institute for Architecture	ZA Hatfield 109
2017 Cape Institute for Architecture - Commendation	ZA Invermark	2009 Retail Design Development Awards - Finalist	ZA Alex Junction
2016 Architizer A+ Awards: Popular Choice Award	ZA OVD919	2009 House & Leisure House of the Year Award	ZA First Crescent
2015 International Property Awards		2009 OPEN THINKBOX / FIRST FIX - Winner	ZA Parkwood Library
– Best Residential Development	SC Pangia Beach	2009 Libera Invited Competition - Winner	HR Dubrovnik
2014 SAPOA Award for Innovative Excellence	ZA New Engineering Building UCT	2006 South African Institute of Architects	ZA Mankgaile
2014 Miami Chamber of Commerce	US MIA Star	2003 South African Institute of Architects	ZA Fisherman's 19
2013 Cape Institute for Architecture	ZA Boma	2003 Cape Institute for Architecture	ZA Fisherman's 19
2012 SAIA Award for Excellence	ZA Voelklip	1998 South African Institute of Architects	ZA Contursi Special Mention
2011 SAIA Award of Merit	CH Lake House & ZA Voelklip	1995 SAIA South Africa Institute of Architects	ZA Santer
2011 Cape Institute for Architecture	CH Lake House		
2011 Cape Institute for Architecture	ZA Voelklip		
2011 KZN Institute for Architecture	ZA Havaan D		
2010 SAIA Award for Excellence	ZA Hatfield 109		
2010 SAIA Award of Merit	ZA Hatfield 109		



Architizer A+ Awards



SAOTA

SELECTED MEDIA COVERAGE



MEET THE TEAM

DIRECTORS



Stefan Antoni



Greg Truen



Philip Olmesdahl



Phillippe Fouche



Mark Bullivant



Logen Gordon

SENIOR ASSOCIATES



Tamaryn Fourie



Roxanne Kaye



Bobby Hugill



Dominik George



Danielle Reimers



Joe Schützer-Weissmann

ASSOCIATES

JUNIOR ASSOCIATES



Enslin Joubert



Grant Hall



Erin Gibbs



Philip Bartman

