

RP15345 & RP15348

Installation Instructions



Original Style



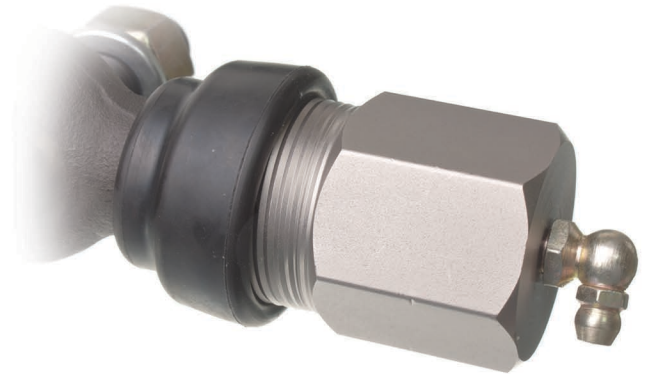
Improved Design

This kit is supplied with a choice of two seals. The original style O-Ring type, and the non-original improved design type. Use the seal of your choice.

Note: When installing ensure the shaft is properly oriented and centered on the bushings so full shaft rotation is possible.



Original style O-rings install in the groove inside the bushing as shown.



Improved design installs over the shaft and bushing as shown.

CAUTION: This kit must be installed by a qualified mechanic, otherwise an unsafe vehicle and/or personal injury could result.

RARE
PARTS[®]
INC.

STEERING AND SUSPENSION

DIAMOND SERIES

WWW.RAREPARTS.COM 800.621.2005