

# Honeybourne Village News October 2017



[www.honeybourne.org.uk](http://www.honeybourne.org.uk)  
50p in the shop

## HONEYBOURNE POTTERY

*Pottery activities for all ages & abilities*

**Weekly Classes, Birthday Parties,  
Holiday workshops, Schools & Education  
Hen Parties, Youth Groups, Clay Imprints**

Contact Alan & Annabel on 01386 830410  
[www.honeybournepottery.co.uk](http://www.honeybournepottery.co.uk)  
3 High Street, Honeybourne, WR11 7PQ

To advertise in the  
Honeybourne Village  
News please email  
[magazine@  
honeybourne.  
org.uk](mailto:magazine@honeybourne.org.uk)



Printing, photocopying  
and scanning.

Booklets, leaflets, fliers,  
invitations etc.

Black and white and colour.

Contact Claire on 07812 779854  
[Claire@poore-prints.co.uk](mailto:Claire@poore-prints.co.uk)

## **MWS Aerial & Satellite Tel 01386 833342**

- Freeview
- Freesat
- Radio and DAB
- Additional TV Points
- Additional Telephone Points

Free advice and quotations

CAI Member C. 1559  
Member of the Worcester Trader  
Register

[www.mws-aerial-satellite.co.uk](http://www.mws-aerial-satellite.co.uk)

email [info@mws-aerial-  
satellite.co.uk](mailto:info@mws-aerial-satellite.co.uk)

The deadline for  
the November issue  
of the  
Honeybourne  
Village News is  
18th October.



## High street Honeybourne

- Over 14 years' experience in the beauty industry.
- Fully insured with salon hygiene certificate
  - Flexible appointment times to suit all
    - Monthly offers

[www.indulgenceskincare.co.uk](http://www.indulgenceskincare.co.uk)

07814048166

**dermalogica**<sup>®</sup>  
a skin care system researched and developed by The International Dermal Institute

CND   
Shellac<sup>™</sup>

  
LASHES  
IT'S IN YOUR NATURE

  
jane iredale  
THE SKIN CARE MAKEUP<sup>®</sup>

  
**JESSICA**<sup>®</sup>

skinade <sup>®</sup>  
better skin from within

**dermalogica**<sup>®</sup>  
**expert**  
C S E

**Sienna**<sup>x</sup>  
PROFESSIONAL SPRAY TAN

# Letter from the Editor

*Hello!*

*Welcome to autumn, and thank you to the children who are so generous with all their back to school germs that they feel they need to share every single one with me. If you're eligible, it might be worth getting a flu vaccination from your doctor or pharmacy, especially if you are at risk of complications.*

*The cover photo is a southern hawker dragonfly that had landed in my pond. Its wings were wet so it flapped furiously on my hand for about 20 minutes to dry out, and then flew off. It also bit me twice, so I'd suggest not putting your hands into their mouths.*

*Finally, just a reminder to anyone who doesn't already know that the old, round pound coins are going to stop being accepted in shops AND BANKS on 15th October. Banks do not have to accept or exchange these coins, so make sure that any piggy banks, coin jars or old handbags have been checked before then.*

*Thank you to the whole host of regular contributors and people who send things in to be included.*

*Download a digital copy of the magazine at [www.honeybourne.org.uk](http://www.honeybourne.org.uk)*

*Claire Poore, Editor,  
magazine@honeybourne.org.uk - 01386 832800 - 47, School Street  
[www.honeybourne.org.uk](http://www.honeybourne.org.uk)*

*The last date for articles for the November magazine is 18th October.*

**Lyn and Dave Benfield would like to say a big thank you to the church flower ladies for arranging the flowers so beautifully for their daughter Louise's wedding to Tony on August 27th.**

**Thank you.**



## HONEYBOURNE NEIGHBOURHOOD PLAN

Do you want to have a chance to influence future development in Honeybourne?

Are you concerned that there are too many or too few houses being built; are they the right type of homes?

Do we need more services and facilities; or do we need to protect our green open spaces?

If you are interested in the future of our Parish please take the time to complete the Honeybourne Neighbourhood Plan Questionnaire.

Every household will receive a letter and questionnaire at the beginning of October. Please do take the time to complete the questionnaire your views are really important to us.

The paper version can be dropped into one of our collection boxes at The Village Hall, Shop, Honeybourne Primary School, The Thatched Tavern or The Gate Inn. Or alternatively you can complete it online at <https://www.surveymonkey.co.uk/r/HoneybourneNP>

Please only complete ONE survey per household and return it by Friday 20th October.

If for some reason you haven't received a questionnaire please contact Becky on 07871 574431.

### **What is a Neighbourhood Plan?**

A Neighbourhood Plan is a way for local people to influence the planning and development of the area in which they live and work. Our Plan will last until 2030 and should:

- Develop a shared vision for the Parish;
- Identify where new homes, shops, offices and other development should be built;
- Identify and protect important local green spaces or other treasured assets; and
- Identify facilities and services that are needed to accommodate development.

Once adopted, our Neighbourhood Plan will become part of the statutory development plan, which means it must be taken into account when planning applications and appeals are determined. The Neighbourhood Plan provides us, the community, with an opportunity to influence development in our local area.

This is your opportunity to have your say and let us know what it's like living in Honeybourne, and your aspirations for the future. When you receive it please do take the time to fill in your questionnaire.

If you are interested in getting more involved in our Neighbourhood Plan please get in touch by contacting either: John Stedman (Parish Clerk) [j-stedman@btconnect.com](mailto:j-stedman@btconnect.com) Tel: 01789 773999 or Becky Burrige (BPA) [becky@brodieplanning.co.uk](mailto:becky@brodieplanning.co.uk) Tel: 01242 898368. Or keep a look out in the local newsletters for the next meeting and please do come along.

Thank you!

The Honeybourne Neighbourhood Plan Steering Group

# HONEYBOURNE PARISH COUNCIL

## **Christmas Lights:**

The Christmas lights switch on event will take place on Friday 24th November. The sponsor a light Christmas light scheme will be put in place for locals to commemorate a loved one. Raffle prizes are being sourced by Councillors and anyone wishing to donate a prize can contact Steve Sidwell.

Local volunteers are needed to help with refreshments etc. Anyone wishing to help or make a donation please contact Steve Tel 01386 834 783 or the Parish Clerk.

## **New Pavilion Building Contract Started**

The construction contractor has started work on the new Recreation Field pavilion and are on course to complete by December. Any questions or issues with the construction works must only be reported to the Parish Council.

## **MP Invitation to attend a Parish Council Meeting:**

An offer from Nigel Huddleston MP to attend a Parish Council meeting was taken up by the Parish Council where the topics for discussion will include the proposed Network Rail extra car park, local traffic speed and policing issues. The date of his attendance will be made public to allow the public to attend the meeting.

## **Super-Fast Broadband Speed Issues**

A County Council promotional circular was distributed on the village E-news network which prompted residents to complain they were not receiving super-fast broadband speeds.

The complaints were reported to Cllr Alastair Adams, our broadband ambassador and Alistair referred the matter to the County Council which achieved a comprehensive response which was forwarded to the complainants and the wider community via E-news. Anyone wishing to receive this information can contact the Parish Clerk or Cllr Alastair Adams.

## **Village Hall Planning Application**

Honeybourne Village Hall committee has submitted a Planning application for change of use of the Village Hall site from community building and associated car park to residential development of two dwellings including demolition of village hall. The Parish Council agreed to fully support the proposals for the Village Hall site.

## **Neighbourhood Development Plan Meeting**

The NDP data gathering questionnaire is distributed throughout the parish to enable all residents to contribute to the NDP – see a separate page in this newsletter.

## **Highway Matters**

### **Double yellow lines**

A request will be made to the County Council for double yellow lines to be installed on the High Street in the vicinity of the new development access near the Gate Inn cross roads.

## **Speeding**

Safer Road Partnerships mobile speed camera van has visited Station Road and will continue to do

so and Cllr Alastair Adams reported many speeding offences were recorded.

### **Bretforton Road Mud**

A strong letter will be sent to Vicarage Nurseries regarding the ongoing incidents of mud on the Bretforton Road.

### **High Street Telephone Kiosk**

Having received a quotation of £3,000 for a fully refurbished and installed kiosk the council will investigate if any outside funding is available to enable refurbishment. The intention is to make it a village information centre.

The Parish Council meets on the 2nd Tuesday of each month. Members of the public are welcome to attend meetings, which are held in the Village Hall and commence at 7.15 pm. Residents are welcome to speak on any issue of local concern during the Open Forum before the start of the meeting.

Clerk John Stedman

1, Ban Brook Road, Salford Priors, Evesham, Worcs, WR11 8XE Tel 01789 773999:  
E-mail: [j-stedman@btconnect.com](mailto:j-stedman@btconnect.com)

The Parish Office is open generally all day 10.00 am to 6.00 pm including weekends for all parish enquiries. Email is my preferred communication but my telephone is manned almost all day. The answer phone is on, but please ensure you state your business is with Honeybourne as my phone serves other Councils and my own business.

For up to Date Council information Visit [www.worcestershire.gov.uk/MyParish](http://www.worcestershire.gov.uk/MyParish) and then link to Honeybourne

## **CPB PLASTERING**

**All aspects of plastering work:**

**Boarding, skimming,**

**rendering, screeding**

**Call CARL BENFIELD**

**Tel 01386 831673 or**

**07717 201 950**

**email [c-benfield@sky.com](mailto:c-benfield@sky.com)**

# Tomlins

## *Funeral Directors*

- 24 Hour Service
- Pre-payment Plans - Fully Guaranteed
- Private Chapels of Rest
- Monumental Masonry
- Modern Jaguar fleet

**60 Years of combined staff service to the community**

**36-37 The Leys, Bengeworth, Evesham**

**Tel: 01386 765 133**

**[www.tomlinsoftheleys.co.uk](http://www.tomlinsoftheleys.co.uk)**



# DAVID BAKER

## FUNERAL DIRECTORS

- 24 hr Caring Service
- Monumental Stone-masons
- Fully Guaranteed Pre Payment Plans

**98 High Street, Bidford-on-Avon**

**01789 773482**

Your Local Funeral Director  
Serving the community for over 20 years

**[www.mylocalfuneraldirector.co.uk](http://www.mylocalfuneraldirector.co.uk)**





# BED & BREAKFAST AT POTTER'S COTTAGE, HONEYBOURNE

~ Double en-suite room £68 per night

~ Twin en-suite room £58 per night

~ Entire cottage £110 per night

Contact Alan & Annabel on 01386 830410  
honeybournepottery.co.uk/bed-and-breakfast  
3 High Street, Honeybourne, WR11 7PQ

Would you like to cycle but you don't own a bike?

Would you like to cycle but lack confidence?

Would you like to ride on the back of a tandem?

Then H-BUG (Honeybourne Bicycle Users Group) is able to help you.

H-BUG has access to a number of bikes that can be borrowed  
for H-BUG cycle rides.

There are no costs, and membership of H-BUG is entirely free.

**Bikes can be booked in advance by texting  
request to 07971 989 430**

## RWH Accountancy Limited

Personal Tax Returns.....*From £ 95*

Sole Trade Accounts.....*From £ 295*

Company Accounts.....*From £ 495*

Other Services: Company Formations, VAT Returns, Bookkeeping, Payroll

Contact Richard: 07823 889711 – richard@rwhaccountancy.co.uk

# Corrine's Cleaning Service

- Office cleaning
- General cleaning & tidying
- Laundry & ironing
- light housework
- CRB Checked
- Competitive rates

Call: 07731 866 445 or

Email: [corrine.page2@googlemail.com](mailto:corrine.page2@googlemail.com)



**John Betts**  
Property maintenance  
General repairs  
Brickwork / stonework  
Patios / repointing  
Painting / roofing  
Fences / storm damage  
25 years' experience  
No job to small  
For a free quote  
Phone Offenham  
01386761379  
mob 07415144926

## Thenailandbeautyroom

*Salon professionalism without salon prices*



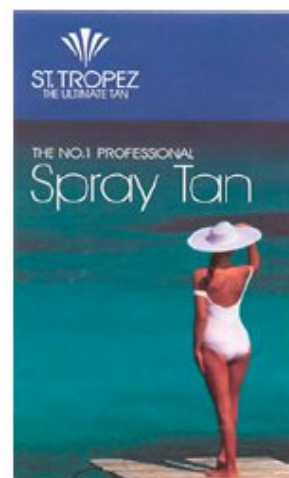
**Rose English MGBT**

*Nail Technician, Professional spray tanning & Beauty therapist*



### Treatments

**ST TROPEZ spray tan**  
**Calgel nails**  
**Clarins facials**  
**Manicures & pedicures**  
**Reflexology**  
**Aromatherapy**  
**Waxing**



**01386 833842 or 07900876406**

**Evening appointments available**

# BRETFORTON GARDEN CLUB

Afternoon visit to Croome walled Garden, 7th September

Forty-two garden club members gathered at Croome to visit the walled garden. We were greeted by Chris Cronin, who together with his wife Karen, has been busy for the last 17 years restoring the garden.

The interesting tour reflected the love and care that had been put in to bring the garden up to its present day standard. Chris's informative talks explained the achievements they had made and highlighted the work still to be done which includes planting many varieties of heritage fruit and veg. With the aid of the National Trust and their volunteers Chris is now confident that the garden will be fully restored and he encouraged us to visit again in the future.

A welcome cup of tea and beautiful cakes greeted us at the end of what was a chilly but very enjoyable afternoon.

Phone Barbara Jenman

01789 720514 or visit the website [www.bretfortongardenclub.co.uk](http://www.bretfortongardenclub.co.uk)

---

"Thank you for  
providing such a  
good service."

*Hannah Jones,  
Customer's Daughter,  
Bluebird Care  
Worcester & Wychavon*



**Bluebird Care**  
Care in your home

We provide flexible and bespoke homecare and support services from 30 minute visits to 24 hour live in care.

Call us or email us today on [worcestersandwychavon@bluebirdcare.co.uk](mailto:worcesterandwychavon@bluebirdcare.co.uk).

Call today to  
find out more

**01386 764 830**

[bluebirdcare.co.uk/worcester-wychavon](http://bluebirdcare.co.uk/worcester-wychavon)

## Ironing and Laundry Service

Reliable, top quality service

£12 per hour

Collected and delivered

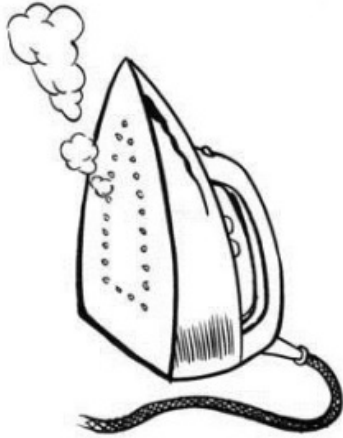
References available

Phone

**BEVERLEY**

**01386 831824**

**07779 103071**



## K925 Pet Services

- Dog walking
- Pet visits
- House sitting
- Fully Insured
- Disclosure checked
- References available

Covering Bretforton,  
Honeybourne and  
surrounding areas

Call Jo: 07912 160131

jo@K925petservices.co.uk  
www.K925petservices.co.uk



facebook  
Find us on Facebook



# Evesham Funeral Service

Independent Family Funeral Directors



## 01386 389585

Craig is available 24 hours a day.  
Please call for any assistance.



Golden Charter  
Funeral Plans



# EveshamFuneralService.co.uk

# Hatha Yoga with Nikki

- \* Qualified and Experienced Teacher
- \* Group and Private Classes
- \* Beginners Welcome

## Honeybourne Village Hall

Daytime & evening classes  
now available.

Stretch \* Tone \* Strengthen \* Relax



Call Nikki: 07484743460  
Email: nikki\_cook@hotmail.com  
Facebook: Hatha Yoga With Nikki

Professional Freelance Business Support Services  
Need someone to look after your Payroll?  
Call for further details!

# MDDB

MICHELLE DENHAM-BAILEY

www.businesssupportmdb.co.uk  
**07523 011488**  
michelle@businesssupportmdb.co.uk



## SUE *Mobile Hair and Beauty*

*Complete Salon-Style Service in  
the comfort of your own home.*

*Fully qualified and experienced  
hairdresser and beauty specialist.  
Only professional products used  
Wella L'Oreal Jessica etc.*

*Flexible appointments  
and personal attention.*

**Sue Williams 01386 832152**  
( Call anytime, but best time is 6 pm )



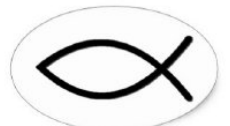
## Mike Baker

Quality property maintenance  
from small works to

General building and roofing - tile, slate, felt, rubber roof.  
Extensions, refurbishments, brickwork, re-pointing,  
windows fitted, doors hung, carpentry, patios and  
landscapes, barn conversions.

**A complete building service**

Freephone: 0800-0937-313  
Mobile: 0794-0837-546



# Letter from the Vicar

**“As long as the earth endures, seedtime and harvest, cold and heat, summer and winter, day and night, shall not cease.”**

These words, spoken by God and recorded for us in the book of Genesis, the first book of the Bible, remind us that all of creation, which very much includes you and me, is part of a cycle of life that includes sowing and planting and then harvesting and reaping what was sown.

Autumn is a glorious season in so many ways. John Keats captures the spirit of this time of year beautifully, describing it as the “Season of mists and mellow fruitfulness.” Traditionally, it is one of the times during the year when we thank God for his goodness and faithfulness, rejoicing with thankful hearts that another harvest is being safely gathered. We are mindful of, and give thanks for, the work of farmers, farmworkers and all those who provide for our daily needs.

Harvest is a particular reminder of the need never to take for granted what we have, whether that be family, friends, health, food to eat, a place to sleep, possessions, wealth or whatever it might be. In many ways, compared with so many others around the world and in our own land, we have an abundance of things to be thankful for and the Bible teaches us that all we have is from God. This is why, at Harvest time in particular, we offer some of what we have been given back to God, in token of our gratitude for his unending faithfulness.

But, Harvest causes me to pause and reflect on my own life, too, and I’d like to encourage you, in the busyness of your life, to also take time to take stock. What ‘seeds’ am I sowing – seeds of love, kindness and unity, or something else? What will be the ‘harvest’ of my life? Will what I have sown bear much ‘fruit’? Will I be fulfilled as I look back in years to come? The answers to those questions will depend on the choices that we’ve made – the ‘seeds’ that we’ve sown, if you like.

Sow well. Sow wisely and, if you are able to, make time this Harvest to thank God for the blessings that he has given to you.

With love in Christ,

Scott  
Rev’d Scott Watts

Team Vicar.  
Telephone 01386 834946 or email [revscotwatts@yahoo.com](mailto:revscotwatts@yahoo.com)

## Church Services - October 2017

	<b>Pebworth</b>	<b>Dorsington</b>	<b>Honeybourne</b>	<b>Willersey</b>	<b>Weston sub Edge</b>	<b>Aston sub Edge</b>
<b>1<sup>st</sup> October Trinity 16</b>	11.00 am Eucharist		9.00 am BCP Holy Communion	9.30 am BCP Holy Communion	11.00 am Eucharist	6.30 pm Harvest Festival
<b>8<sup>th</sup> October Trinity 17</b>	10.00 am Family Praise	11.00 am Eucharist	6.00 pm Evensong	9.30 am Eucharist		6.30 pm Evensong
<b>15<sup>th</sup> October Trinity 18</b>	9.00 am Eucharist		11.00 am Harvest Eucharist	11.00 am Family Service	9.30 am Eucharist	6.30 pm BCP Holy Communion
<b>22<sup>nd</sup> October Trinity 19</b>	10.00 am Benefice Service at Pebworth					
<b>29<sup>th</sup> October Last Sunday after Trinity</b>	4.00 pm Evensong	11.00 am Eucharist	4.00 pm Evensong	<b>10.30 am United Service at the Methodists</b>		6.30 pm Evensong
<b>5<sup>th</sup> November All Saints' Day</b>	11.00 am Eucharist		9.00 am BCP Holy Communion	9.30 am BCP Holy Communion	11.00 am Eucharist	6.30 pm Evensong

## **A 4-mile walk with great views via Long Lartin and Shinehill**

*This route is clearly signed (signposts and waymarks)*

*Pets should be kept on leads at all times.*

*Sturdy shoes or boots are recommended.*

Start at The Gate Inn, cross the Weston Road (TAKE GREAT CARE) and walk up High Street to the telephone box. Take the footpath opposite (between Meadow Walk and the old garage). After 60 metres turn left into the corner of the field and cross the ditch bridge. You will pass alongside the underground sewage pumping station on your right before crossing over a stile. Walk diagonally across the paddock and through the field gate. Walk across the farmyard and through the next gate; into the next paddock and onto the gate at the far end. Take care to follow the waymarker on the gate post that directs you in the general direction of the brook on your right-hand side. Be careful not to disturb the dinosaurs behind the hedge to your right. Over a stile in the middle of the field and onwards to the right-hand side of the hedge across the field ahead of you, and to the bridge over the Gate Inn brook.

Over the bridge and turn left so that the brook is now on your left. Pass through the field gates and walk straight on with the brook on your left. Passing field gates on your left, follow the field path until you reach the right-hand corner of this field. Through these field gates and left into the next field following the waymarkers to reach the railway line. TAKE THE GREATEST OF CARE in crossing the railway line using the stiles.

Through the metal kissing gate into the field, and walk in a one o'clock direction to the next kissing gate and into the farmyard (to the right of Long Lartin Prison). Walk between the farm buildings and onto the driveway leading alongside the prison to the Shinehill Road. TAKE GREAT CARE crossing this road before turning right and walking 80 metres to the stile. Over this double-stile into the field, and then walk along the headland on the left-hand edge of this field until you reach a stile. DO NOT cross this stile. Turn right and cross this field to the metal kissing gate leading onto the lane. Cross the lane and over the next stile. Walk straight ahead up the hill until you reach a stile into the woodland. Walk straight ahead through the woodland to the next stile. Over this stile and straight ahead with the woodland fence on your left. Down the hill into the left-hand corner of this field and over the stile. Note the hill behind the bungalows ahead. This is Tump Bew Hill, Honeybourne's original Bronze Age site. Continue walking straight ahead along the headland, with the hedge on your left, until you arrive at the main Bidford Road.

Turn right and, TAKING GREAT CARE, walk facing the traffic until you see the bridleway on your right after 350 metres. Follow this bridleway along the headland and through a field gate into the next field. Straight ahead until you reach the field gate next to the farm on the Shinehill Road.

Turn left and then TAKE GREAT CARE to cross the road. Walk, facing the traffic, for 540 metres to the junction with the Bidford Road.

Turn right and, facing the traffic, walk over the railway bridge and past the Ranch



Caravan Park and All Things Wild to arrive back at The Gate Inn.

We hope you have enjoyed your walk today, and that we have whetted your appetite for a variety of future walks during 2017\* in and around the Parish of Honeybourne. Email [steve@stephenbullen.com](mailto:steve@stephenbullen.com) for copies of any walks, to express concerns, or seek advice on how to best enjoy Honeybourne's Rights of Way.\* A great way to gently improve your fitness and wellbeing, whilst appreciating the beautiful countryside in which we live.

## Free Bus To Tesco Thursdays, 10am

Leaving from Dudley Road.

### **HONEYBOURNE PLAY-READING GROUP**



After an hilarious read through of Anna Longaretti's 'Sex Cells' last month, the group will be continuing their autumn programme on: **Thursday, 19<sup>th</sup> October 7:30pm** (play yet to be confirmed). It would be lovely to see some new faces joining us.

You don't have to be an accomplished reader or have had any previous experience of play-reading to come along - just a sense of humour and willingness to give it a go! Our emphasis is on keeping the evenings as light-hearted and entertaining as possible. This month will also be extra special as we will be celebrating our second birthday.

**The group is open to all villagers (18+) and people from the surrounding area. They meet on the third Thursday of each month in Stephenson Way. Membership is free and all reading material is provided.**

For further details, please contact Nicola Hogan  
Mobile: 0785 191 3435 / Email: [honeybourneplayreadinggroup@gmail.com](mailto:honeybourneplayreadinggroup@gmail.com)

**Rotas for Services – Honeybourne – October 2017**  
**Due to the change in the benefice please check all times/venues during month**  
**with notice board**

SERVICE	SIDESMAN	READER	INTERCESSOR	FLOWERS	CLEANING ROTA
Sunday October 1st 9.00am Communion <i>Trinity 16</i>	M Edwards L O'Connell Edwards	M Edwards	Minister	M Miller	S Matthews D Griffiths
Sunday October 8 <sup>th</sup> 6.00pm Evensong <i>Trinity 17</i>	M Miller	M Miller	Minister	M Miller	M Miller
Sunday October 15 <sup>th</sup> 11.00am Harvest Communion <i>Trinity 18</i>	M Merrett A Taylor	A Taylor	M Merrett	S Matthews	A Taylor M Hopkins A Banbury
Sunday October 22 <sup>nd</sup> 10.00am Communion <i>Trinity 19</i>	Benefice Service of Holy Communion At Pebworth			S Matthews	T Banks
Sunday October 29 <sup>th</sup> 4.00pm Evensong <i>Last Sunday after Trinity</i>	T Banks	T Banks	Minister	M Miller Wedding	S Matthews D Griffiths

CHURCHWARDENS: Mrs. Mary Miller Tel: 831998  
Mrs Sylvia Matthews Tel: 832215

BRASS CLEANING: Mrs M Merrett Tel: 832610  
Mrs P Powell

CHURCH NEWS  
August/September 2017

Deaths -  
Marriages - Louise Benfield to Anthony Hickman  
Baptism - Oscar John Brown  
William Layton  
Emily-Rae Chappell  
Ava Grace Gaffney

++++  
Dear Friends

Autumn is here and the church turns to Harvest Festival, this will take place this year on Sunday 15<sup>th</sup> October, at Church 11.00am

Unfortunately the Harvest Supper on the 7<sup>th</sup> October has had to be cancelled but please come along to Church for the Harvest Festival Service.

Next month all the dates running up to Christmas should be available for your diaries.

Mary Miller Churchwarden - 01386 831998

# MH Carpentry



Time served craftsman &  
qualified teacher of carpentry;  
specialising in:

- Decking
- Doors
- Windows
- Flooring- wood / laminate
- Locks
- Fencing
- Roofing
- CCTV installation
- Any projects to do with wood
- Snagger for new builds

No job too small, Competitive prices  
Free estimate in local area

Call Matt 07803 608813 / 01386 642885  
email [matt-henson@hotmail.co.uk](mailto:matt-henson@hotmail.co.uk)

## **Honeybourne Wednesday club**

The club met on 5th September and 31 members were present.

Birthday cards were distributed and the minutes of the last meeting read. Win then announced that the bowling trip in November was proving to be a slight problem but has found somewhere else, and after a show of hands it was decided to book.

Win then took cash and names of those members wanting to go to Weston Super Mare on 13th September.

Entertainment was Jan Brant from Hereford and Worcester Safety in the Home which consisted of every one taking part and giving answers to numerous questions.

A vote of thanks was given by Peggy Miller.

After the welcome refreshments and raffle members then returned home.

The October meeting is on the 4th with Matthew Sproston on the life and songs of George Formby. All welcome to come along.

### **ROYAL ALBERT HALL**

By Coach, from local pick-ups

Matinee Performance

Classical Spectacular

£55-£70 including Travel. Superb program, great venue.

**Sunday 19th November**

For details Tel Phil or Maddy on  
01386 832095



Clocks will go back one hour at 2am on Sunday 29th October.

# Merstow Green

FUNERAL HOME, EVESHAM

For over 25 years Philip Tomlins and his family have provided individual care to the residents of the Vale of Evesham.

Based in Merstow Green, at the heart of Evesham, we can help you plan ahead and provide a comforting guiding hand when it matters most.

Telephone:

**01386 49903**

24 hours



Philip Tomlins DipFD

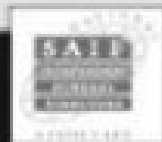
Call **Philip** direct for support, care and reassurance in your time of need

## Plan Ahead, pre-paid and bespoke arrangements

Spread the costs and concern of your personal requirements with our pre-paid funeral planning service for yourself or a relative.

## Green Funerals and Woodland Burials

From environmentally friendly caskets to full woodland burials, Merstow Green are able to advise on all service types.



[www.MerstowGreen.co.uk](http://www.MerstowGreen.co.uk)



We're still looking for helpers on our committee



honeybournecommunitycentre@yahoo.co.uk

## H-BUG

Honeybourne Bicycle Users Group

Every Honeybourne child now has the opportunity to cycle.

The village (H-BUG) has bikes for 6-10 year olds to borrow and also bikes that parents can borrow - all completely free of charge.

There is a short family cycle ride every month on the last Saturday of the month at 2.00pm from the village hall.

Bikes can be booked in advance by texting request to 07971 989 430

### **Interested in hiring the Village Hall?**

Go to our website [www.honeybournevillagehall.org](http://www.honeybournevillagehall.org) and click on bookings, or ring Rita on 01386 640696 about regular bookings and Sylvia on 01386 832215 about one-off events

# A J HICKMAN ELECTRICAL

E: ajhickmanelectrical@aol.com

As a business our aim is to provide a **high quality** service so our customers receive **top quality** install and satisfaction on the whole service at a very **competitive price.**

- New Build Installs
- Rewires
- Fuseboard Upgrades
- Additional Power Points / Lights
- External Lighting
- Any Aspects of Electrical Work
- Additional BT Points
- Additional TV Points

**TEL: 01386 831258**

**MOB: 07976 052828**

**Electrical Safety Register**

incorporating  
ELECSA + ECA  
Certification Ltd



**SPIN DOCTOR** 

## BIKE REPAIRS - BRETORTON

OVER 20 YEARS EXPERIENCE

CYTECH LEVEL 3 MASTER TECHNICIAN

LOCAL COLLECTION AND DROP OFF AVAILABLE

PHONE CRAIG: 07961 108009

ALSO ON FACEBOOK "SPIN DOCTOR BIKE REPAIRS"



The Evesham Vale Committee of  
Macmillan Cancer Support  
present their  
**WORLDS BIGGEST COFFEE  
MORNING**

Saturday 30<sup>th</sup> September 2017

Offenham Village Hall

Doors Open 10.30am Raffle Draw 12.00pm

Entry £2.00 to include a drink & a cake

Stalls:

Fruit and Veg	Crafts
Cakes	Tombola
Books	Toys
Christmas Stall	Gifts

Date for your diary: Macmillan Christmas Concert

14<sup>th</sup> December 2017 in Offenham Church. Tickets available  
from Pauline Smith 01386 443190

## News from your District Councillor & County Councillor Alastair Adams October 2017

Dear Residents,

Summer is over, and now the darker nights are drawing in. Autumn colours are everywhere, and you can smell the open fires as you walk around the village. Winter is coming! Here is the news this month from the District and County Councils:

### CCTV

Wychavon District Council is kicking off a review of public-space CCTV, a service WDC provide in Broadway, Droitwich, Evesham and Pershore. CCTV is monitored centrally at the main WDC Pershore offices and the system has been in operation since 1999. The aim of the service has always been to prevent crime, reduce the fear of crime and to assist in the apprehension and prosecution of offenders. Footage is regularly requested by West Mercia Police to help with both investigations and active incidents, and over 800 such requests were made in 2016. WDC have decided that after 18 years of operation the service is ready for a review, and members of the Overview and Scrutiny Committee have been asked to look into the service further. The review team is inviting those interested in giving their views to a session on 26 September, from 9am (for a 9.30am start) at the Civic Centre in Pershore. Here they will be asked to share their experiences to help the review team make its recommendations to Executive Board.

### Low unemployment in Wychavon

The claimant count proportion in Wychavon is 0.9% of the 16-64 population, which is still the lowest across Worcestershire (Worcestershire 1.3%, West Midlands 2.4% and England 1.9%). The number of 18-24 year old claimants stands at 140 – a proportion of 1.8% of this particular group of the population (Worcestershire 2.2%, West Midlands 3.4% and England 2.7%). This figure is down 15 from the figure recorded 12 months ago.

### Wychavon Well-Being Week - 9 to 15 October

Wychavon Wellbeing Week will take place from 9 to 15 October, and WDC are working with partners to put on a range of activities and events during the week aimed at residents that will be promoting the five ways to wellbeing during the week. See <https://www.wychavon.gov.uk/activities-and-events>

### Highways

1. Mickleton Rd, Honeybourne – has been patched and repaired.
2. Pavements – the WCC is finalising which pavements in the area will be re-surfaced in 2017/18 and 2018/19. Highway engineers attended Honeybourne on Monday 11th Sept to inspect all pavements including Stratford Rd & Dudley Rd.
3. Road over bridge by Honeybourne Station – report received back from Highways listing the options regarding the subsidence.
4. Mud on Bretforton Rd – Vicarage Nurseries confirmed they have bought a road sweeper and will sweep this road more regularly. They also stated they are looking at a longer term solution installing some hard standing at the exit of the fields.

As always, if you have any issues on any Highways matters, please report it on the WCC



website

[http://www.worcestershire.gov.uk/homepage/98/report\\_it](http://www.worcestershire.gov.uk/homepage/98/report_it)

Also remember a photo of the Highways problem is as good as “a thousand words” so always take a photo where possible.

Wheelie Bin “Slow down” and “30mph” stickers

I still have these if any resident wants one to put onto their wheelie bin.

Village Hall Lottery application

I wrote a letter of support to go with the committee’s application for the next round of lottery funding. Hopefully Honeybourne will be successful, and we will be one step closer to starting work on building a new Village Hall.

Mobile Speed cameras in Station Rd/Buckle Street

I mentioned last month that West Mercia Safer Road Partnerships had agreed to put a mobile speed camera on Station Rd. I have been told by them that up until 14th September, they had visited 3 times and detected 23 Offences. All offenders are being considered for prosecution and dependent on their speed and driving history will either be offered a driver improvement scheme, or a fine and 3 penalty points.

Divisional Fund

The grant to help with a new under 11 football team in Honeybourne (called Honeybourne Harriers) has been paid for football kit & training equipment.

If you run a local Community organisation and need a grant for some vital equipment or service, then please feel free to apply for one from the Divisional Fund by contacting me at [adams.pebworth@gmail.com](mailto:adams.pebworth@gmail.com)

Buckle Street

As I am writing this, the front page news of the Evesham Journal is of two horrific car accidents on Buckle Street not far from the glider airfield. My thoughts are with the families and loved ones of the young men that lost their lives. Buckle Street is a dangerous road with many junctions and house/farm entrances, and many folk do drive too fast when using it. I have been working to get a Traffic Road Order for a 40mph speed limit through Ullington, as I did for Bickmarsh, but in the meantime please can I ask all drivers to slow down through Ullington; residents pulling out of their drives have reported terrifying stories of near misses. The Safer Road Partnership and the Highways Authorities are also carrying out various investigations currently along the length of this road. I will keep you informed.

Your District & County Councillor, Alastair Adams can be contacted on [adams.pebworth@gmail.com](mailto:adams.pebworth@gmail.com) or mobile 07725 979 277 or [www.alastairadams.org](http://www.alastairadams.org)

# SportHoneybourne

[www.sporthoneybourne.org.uk](http://www.sporthoneybourne.org.uk) is the website where you can quickly find your favourite sports and exercises.

Local clubs and classes are all listed, so you have direct access to view their activities. Also, the latest national news feeds are available here for most popular sports.

**Is your particular interest Pilates?**

**If so, enter the website and select “Exercise”, and then select “Pilates”.**

**Or is it Table Tennis?**

**If so, enter the website and select “Ball”, and then select “Table Tennis”**

Anything missing?

What will you do today?

Maybe set a Personal Best (PB), however short or slow. We can all do just a little more to improve our health and fitness.

Need help or support? Contact Steve who will be only too pleased to help in any way.

**[www.sporthoneybourne.org.uk](http://www.sporthoneybourne.org.uk)**

HONEYBOURNE VILLAGE HALL

## LIVING FITTER LIVING HAPPIER

**FITNESS PILATES**  
MONDAYS @ 12.30-1.30  
TUESDAY'S @ 6-7PM  
Anyone welcome  
Whole body conditioning  
Toning, core stability and flexibility  
Weight loss and fitness  
Improved well-being.

**FITNESS IS NOT  
ABOUT BEING  
BETTER THAN  
SOMEONE ELSE...IT'S  
ABOUT BEING  
BETTER THAN YOU  
USED TO BE.**



**LIVING LONGER &  
STRONGER CLASSES**  
MONDAY'S @ 12.30-1.30

Designed for over 50's.  
Recommended by GP's &  
Physio's

CALL CLAIRE 07554 192 487

CLAIRE\_OLDROYD@MAIL.COM

## **Pound Coins**

**On 15th October the old round pound coins will stop being legal tender. Shops will not accept them and BANKS WILL NOT EXCHANGE THEM. Old pound coins still in piggy banks or pockets will be worthless after this date.**

**This is not the case with the old five pound notes as Bank of England notes retain their face value for all time. The words "I promise to pay the bearer on demand..." ensures that a bank will always accept them. Coins, however, are not protected by this promise.**

**Don't be left out of pocket - spend or exchange your pound coins before 15th October.**



## **HONEYBEES W.I.**

### **'One Egg Or Two?'**

**Rosemary Prosser** was our guest speaker for the September Meeting. She gave a humorous account of her experiences of setting up and managing farm guest houses near Worcester and Cornwall. The Title of her talk was 'One Egg Or Two?' this of course related to the customary breakfast question.

A very enjoyable evening with plenty of laughter, the competition was for a decorated egg which was won by Hilary Coleman

**Our next meeting on Monday, October 16th at 7:30 Honeybourne Village Hall**

**Speakers: Doreen Jeeves & Val Durnall**

**'Associated Country Women Of The World (ACWW)'**

please come along, you will be made to feel very welcome

check us out on facebook [honeybeeswi](#) or [www.honeybeeswi.wordpress.com](http://www.honeybeeswi.wordpress.com)

The deadline for articles for  
the November issue of the  
Village News is 18th  
October.



**EVERY THURSDAY**

**Honeybourne Village Hall**

**5pm and 7pm**

**Call Julie on 07511 518445**

**facebook**

**juliebaylis slimming world consultant  
honeybourne**

**A warm welcome awaits**

**slimmingworld.co.uk**  
**0344 897 8000**

***Slimming***  
**WORLD**  
touching hearts, changing lives



*the Fleece Inn*

The Cross, Bretforton, Nr. Evesham,  
Worcestershire WR11 7JE

Tel: 01386 831173

Email: [info@thefleeceinn.co.uk](mailto:info@thefleeceinn.co.uk)

[www.thefleeceinn.co.uk](http://www.thefleeceinn.co.uk)

# *October at the Fleece*

Apple & Ale

**Fri 13 Oct, 8pm - Sun 15 Oct, 5pm, Free Entry**

Our annual beer and cider celebrations - Cheers!

Other entertainment includes morris dancing, mumming, cider making demonstrations, skittles, apples displays and tastings, and live music including Dave Peabody & Regina Mudrich.

**Fleecey Folk: Vishten**

**Sun 22 Oct, 8pm, £12**

From Canada's East Coast, Acadian trio Vishtèn dazzle audiences with a fiery blend of traditional French songs and original instrumentals that fuse Celtic and Acadian genres with a modern rock sensibility and indie-folk influences.

---

Food served: Monday to Friday 12pm-2.30pm & 6.30pm-9pm  
Saturday 12pm-3pm & 6pm-9pm. All day Sunday 12pm to 8.30pm

---

*Country Pub of the Year (Good Pub Guide 2016)*  
*Visit England Tourism Pub of the Year 2016 Gold Winner*

For more events and our current menu see [www.thefleeceinn.co.uk](http://www.thefleeceinn.co.uk)

Phone: 01386 831173 Email: [info@thefleeceinn.co.uk](mailto:info@thefleeceinn.co.uk)





**Your local friendly garage**

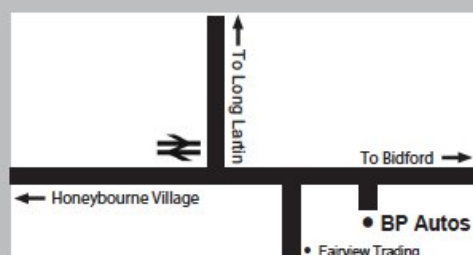
**For Servicing and Repairs to all Vehicle Makes  
Cars to Light Commercial Vehicles**

**Batteries • Tyres • Exhausts  
Wheel Balance • Wheel Alignment  
Diagnostics • Puncture Repairs  
And Much More!**

**Give us a call or drop in and see us.  
We are here to help you safely on your journey.**

**T: 01386 832157**

**The Old Brickworks  
Buckle Street  
Honeybourne  
Evesham WR11 8QE**



**Opening hours**

**Mon to Fri: 8am - 6pm**

**Sat: 8am - 1pm**

# Honeybourne Parish Council

List of Councillors 2015 - 2019

Name	Address	Telephone	
Graham Clelland	Lyndale, Station Road, Honeybourne, Evesham WR11 7QG	01386 832500	E
Andrew Attridge	Kaaga, Friday Street, Pebworth. Or The Ranch Caravan Park	01386 830744	E
David Cowan	10 Westbourne, Honeybourne, Evesham WR11 7PT	01386 831801	E
Colin Clear	23 Dudley Road Honeybourne WR11 7XR	01386 831804	E
Richard Chivers	The Old Vicarage Stratford Road Honeybourne WR11 7PP	01386 830 272	C
Stephen Sidwell	Wychwood, Station Road, Honeybourne, Worc's, WR11 7QG	07815311432	C
Sandra Walsh	The Elms, Buckle Street Honeybourne WR11 8QQ	07714 237 336	C
Heath Jobes	1, Clun Forest Way, Honeybourne WR11 7AP	07736 168736	C
Mathew Henson	4 Herdwick Drive Honeybourne WR11 7AN	07803 608 813	C

**Here are the details of the local police officers. The non-emergency number is 101 anywhere in the UK.**

**Police officer:** Julie DeParis - [julie.deparis@westmercia.pnn.police.uk](mailto:julie.deparis@westmercia.pnn.police.uk)

**Police Community Support Officer** - Pete Davey

[peter.davey@westmercia.pnn.police.uk](mailto:peter.davey@westmercia.pnn.police.uk)

Tel 0300 333 3000, Voicemail 01905 725763

**PSCO Bradley Sansom** - [bradley.sansom@westmercia.pnn.police.uk](mailto:bradley.sansom@westmercia.pnn.police.uk)

Tel 101, ext 3408

## **Other useful contacts:**

**Village Hall Lettings Secretary**, for regular bookings call Rita on 01386 640696 or Sylvia on 832215 for one-off events

**Honeybourne Sport and Recreation Field** - John Stedman, Tel 01789 773 999

## **Honeytots**

### **Parent and Toddler group**

welcomes new people

Wed. 9.15-11.30am term time at Honeybourne First School Hall

£2 per family, snack included

We are aimed at toddler ages but babies are also welcome.

Find us on Facebook- Honeytots

Phone: Vicki Gear 07834 485794

# UNIFORMED ORGANISATIONS

**1<sup>st</sup> Honeybourne & District Scout Group consists of:**

## BEAVERS

Beavers meet on a Wednesday evening at Honeybourne First School from 6.00pm to 7.15pm, for boys & girls aged from 5yrs 9mths to 8 yrs

Contact: Sally Perkins 01386 833915

## CUBS

Cubs meet on a Wednesday evening at Honeybourne Village Hall from 6.30pm to 8.00pm for boys & girls aged from 7yrs 6 mths to 10 yrs 6 mths

Contact: Jayne Richmond on 01386 831515

## SCOUTS

Scouts meet on a Thursday evening at Pebworth Village Hall from 7.30pm to 9pm for boys & girls aged from 10 yrs to 14 yrs

Contact: Lynn Clements on 01386 833238 or 07950 791610

## SEA CADETS

Evesham Sea Cadets and Marine Detachment

meet Monday and Thursday evenings every week at 7.00pm until 9.30pm for young people aged between 10 years to 18 years.

For further information please email: [aoevesham@gmail.com](mailto:aoevesham@gmail.com) or ring us on a parade night on 01386 833383.

### **Mobile Library Time Table: Library visits on the 4th Friday of the month.**

<b>Grove Avenue:</b>	<b>12.05 - 12.20</b>	<b>Lower Westbourne:</b>	<b>12.25 - 12.40</b>
<b>Perrie Drive:</b>	<b>12.45 - 1.00</b>	<b>Weston Road:</b>	<b>1.05 - 1.15</b>
<b>LUNCH</b>		<b>Village Hall:</b>	<b>1.45 - 2.00</b>

## **Honeyangels**

Honeyangels meet every Tuesday at 10am in the church. We have a few songs, a story, a collection, a drink and cake while the children play with toys and mums or dads chat.

For more information contact Sylvia Matthews on 01386 832215



## H-BUG

### Cycle rides in Honeybourne

Everyone is welcome

Saturday 30th September	Family cycle ride 2.00pm at the Village Hall
Saturday 7th October	Cycle Jumble Crawford Hall, Bidford
Saturday 21st October	Aspire to cycle 20 or 40 miles 2.00pm at Badham Motors
Saturday 28th October	Family cycle ride 2.00pm at the Village Hall
Saturday 4th November	Aspire to cycle 10 or 20 miles 2.00pm at Badham Motors
Saturday 11th November	Challenge Hills cycle ride
Saturday 18th November	Aspire to cycle 20 or 40 miles 2.00pm at Badham Motors
Saturday 25th November	Family cycle ride 2.00pm at the Village Hall

## SHORT MAT BOWLS

If you enjoy watching, and perhaps marvelled at the skill of the professionals performing on T.V. why not come along to the Village Hall on Friday evenings (7.30) and have a go yourselves at a somewhat simpler version called Short Mat Bowls.

All equipment is provided the only thing we ask that you wear flat shoes. Trainers etc. are ideal. The cost is £2 per session.

Please note that everyone within the village of Honeybourne should receive the Honeybourne Village News around the last week or weekend of the month. The magazine is available TO PURCHASE from the village shop: Please do not just take a copy as it costs both the shop and the magazine itself money.

**BADHAM MOTORS**

Stratford Rd. Honeybourne Evesham.

**Tel: 830307**

MOTOR ENGINEERS WHO CARE

ALL TYPE OF VEHICLE REPAIR

SERVICING/M.O.T.

CLASS 3.4.7.

QUALITY USED CARS ALWAYS

AVAILABLE

**FILL THE FRAME**

**All your picture framing needs.**

Specialist in framing sport, film, TV and music photos and memorabilia. Wedding collages made to order.

**Phil Rainey**

45, School St, Honeybourne

**Tel. 01386 833505**

**07969 620555**

## ADVANCED BOOKING CARS

**A** ABC Private Hire of Honeybourne **A**

**B** Call Thomas on **B**

**C** 07752 640352 / 01386 834028 **C**

**www.abcprivatehire.co.uk**

Any Destination, Any Time or Day Hire  
Airport, Rail, Coach & Sea Port Connections  
Meet and Greet Service

## LADIES!

**Walking Keeps You Fit.**

**Join our walking group and make new friends.  
We do a two-mile walk on Monday, Wednesday  
and Friday mornings.**

**For more information call Ann on 01386 830517  
We look forward to seeing you.**



**For all your craft and  
sewing needs  
No job too big or too  
small!**

Ring Shirley on 07957 620237  
or email [craftandsew4u@yahoo.co.uk](mailto:craftandsew4u@yahoo.co.uk)  
**craftandsew4u.co.uk**

### **Evergreen Garden Maintenance**

Mowing Hedge Cutting  
Tree Pruning, Turfing Etc:  
No job too small References available  
Garden Clearance Service

**FOR A FREE QUOTE**

Please Phone Tony

T: 01386 854797

M: 07752 613814



To advertise in the Honeybourne Village News or to  
contribute to the magazine, please contact Claire Poore  
at [magazine@honeybourne.org.uk](mailto:magazine@honeybourne.org.uk)  
or phone 01386 832800

# CLAREMONT CARS

## PRIVATE HIRE SERVICE

From Bidford & Honeybourne

We offer a professional door to door service by appointment  
24 hours a day, 7 days a week.

Serving South Warwickshire, the North Cotswolds and the Vale of Evesham,  
we cover all locations, both locally and throughout the U.K.

Estate Cars and people carriers up to 8 seats are available.  
We specialise in meet-and-greet facilities at all major UK Airports.  
Sample discounted rates (at 1st January 2016) including up to four  
passengers (supplement applies for people carrier):

### BIDFORD OR HONEYBOURNE to

	From		From
Birmingham	£60	Bristol Airport	£100
Heathrow	£125	Luton Airport	£130
Gatwick	£150	Stansted	£150
Manchester	£140	Southampton	£140

Please enquire for rates from your local area or for any other destination.

FOR THE BEST IN PRIVATE ~HIRE

CALL NOW ON:

**01386 833660**

Philip Hickson – 53 Stratford Rd, Honeybourne,  
Evesham. WR11 7PP

E-mail: [info@claremontcars.co.uk](mailto:info@claremontcars.co.uk)

Website: [www.claremontcars.co.uk](http://www.claremontcars.co.uk)