

# IPTG

(isopropyl- $\beta$ -D-1-thiogalactopyranoside)

Components	B35	B325
IPTG	5 g	25 g

1.2017

The logo for 'blirt' is displayed in a bold, lowercase, green sans-serif font. The background of the page features abstract molecular diagrams with green and orange nodes connected by lines, and large, semi-transparent circles in shades of green and orange.

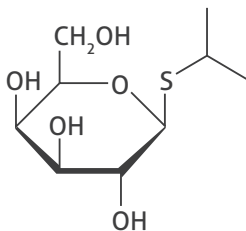
# IPTG

IPTG (isopropyl- $\beta$ -D-1-thiogalactopyranoside) is a chemical analog of lactose, which is not hydrolysed by  $\beta$ -galactosidase.

It is used during the expression of recombinant protein in a Tabor-Studier as an inducer of the lac promoter.

IPTG is also used in combination with X-Gal in the screening of recombinant clones of *E. coli* based on the known plasmid pUC18/19 system for selecting the white/blue colonies.

## Composition & structure



## Molar mass

238.30 g/mol

## Quality control


Purity >98% in HPLC

## Preparation

Dissolve IPTG in water

## Storage

- IPTG should be stored at +4°C and protected from the sunlight!  
After reconstitution, the IPTG should be kept at -20°C.

 for research use only