



Enviro Loo

ABOUT US

Access to sanitation is a universal human right.

Enviro Loo is a waterless toilet system that provides a safe, non-polluting, cost-effective solution to the sanitation challenge. An evaporation and dehydration system, the **Enviro Loo** utilises sun and wind to transform human waste into a safe, neutral, pathogen free material, without the use of water, chemicals or electricity.

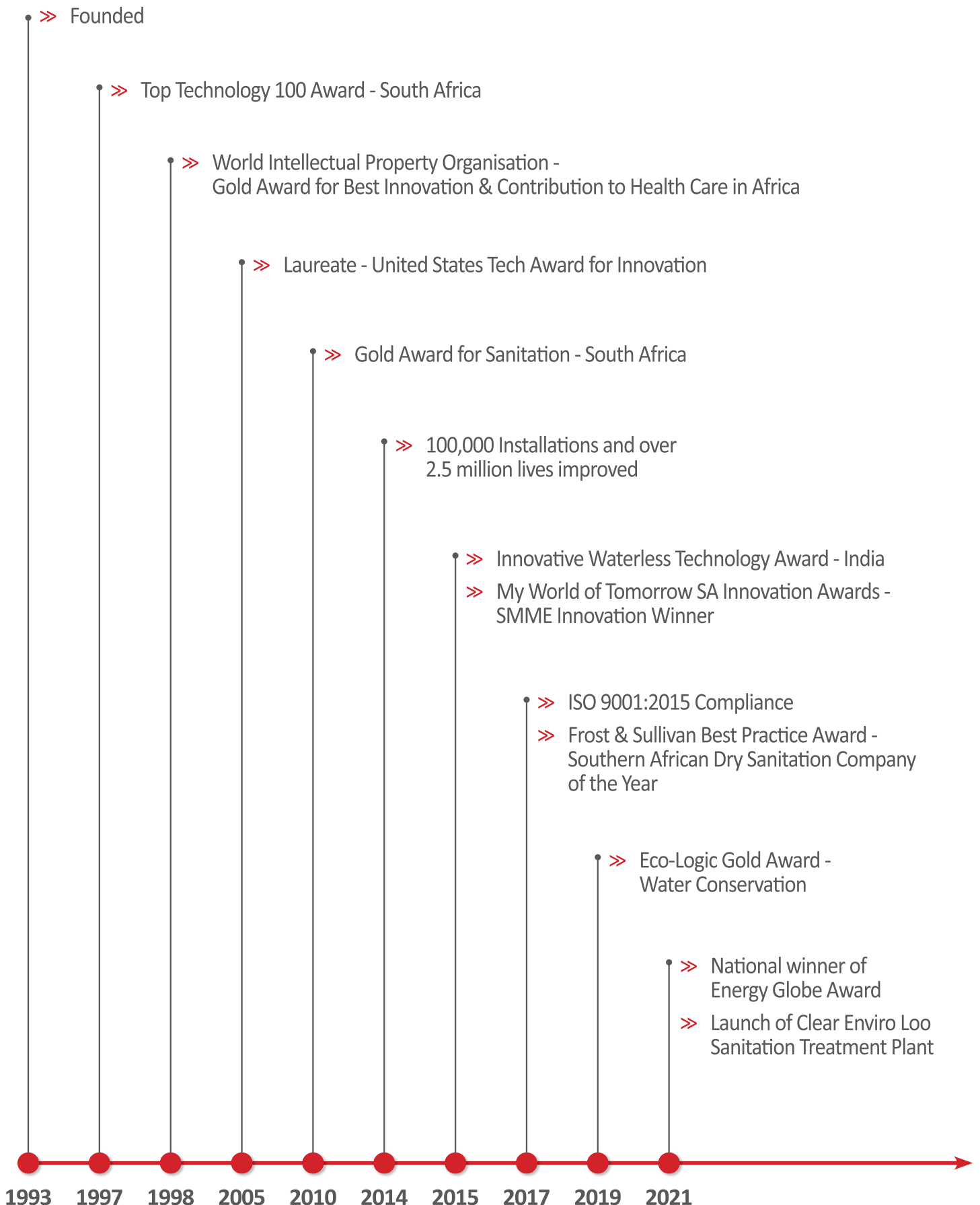
The **Enviro Loo** provides respectability, dignity and safety and as an organisation we are committed to bringing forward the day when every person has access to sustainable sanitation facilities.

THE ENVIRO LOO BENEFITS AND CHARACTERISTICS

- Odourless
- No flies
- Easy to install
- Non-polluting, zero discharge system
- Life span in excess of 50 years
- Once-off capital investment
- Conserves water resources
- No chemicals used
- No expensive reticulation and sewage treatment plant required
- Low waste management costs
- Local community employment opportunities



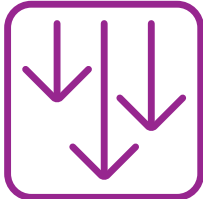
A PROUD HISTORY



PRODUCT SPECIFICATIONS



TOILET



GRAVITY



WIND



SUN



DIGNITY

HOW DOES IT WORK

1 Waste enters the container via a ceramic toilet bowl. Liquid waste drains to the bottom of the container while solid waste remains on the drying plate.

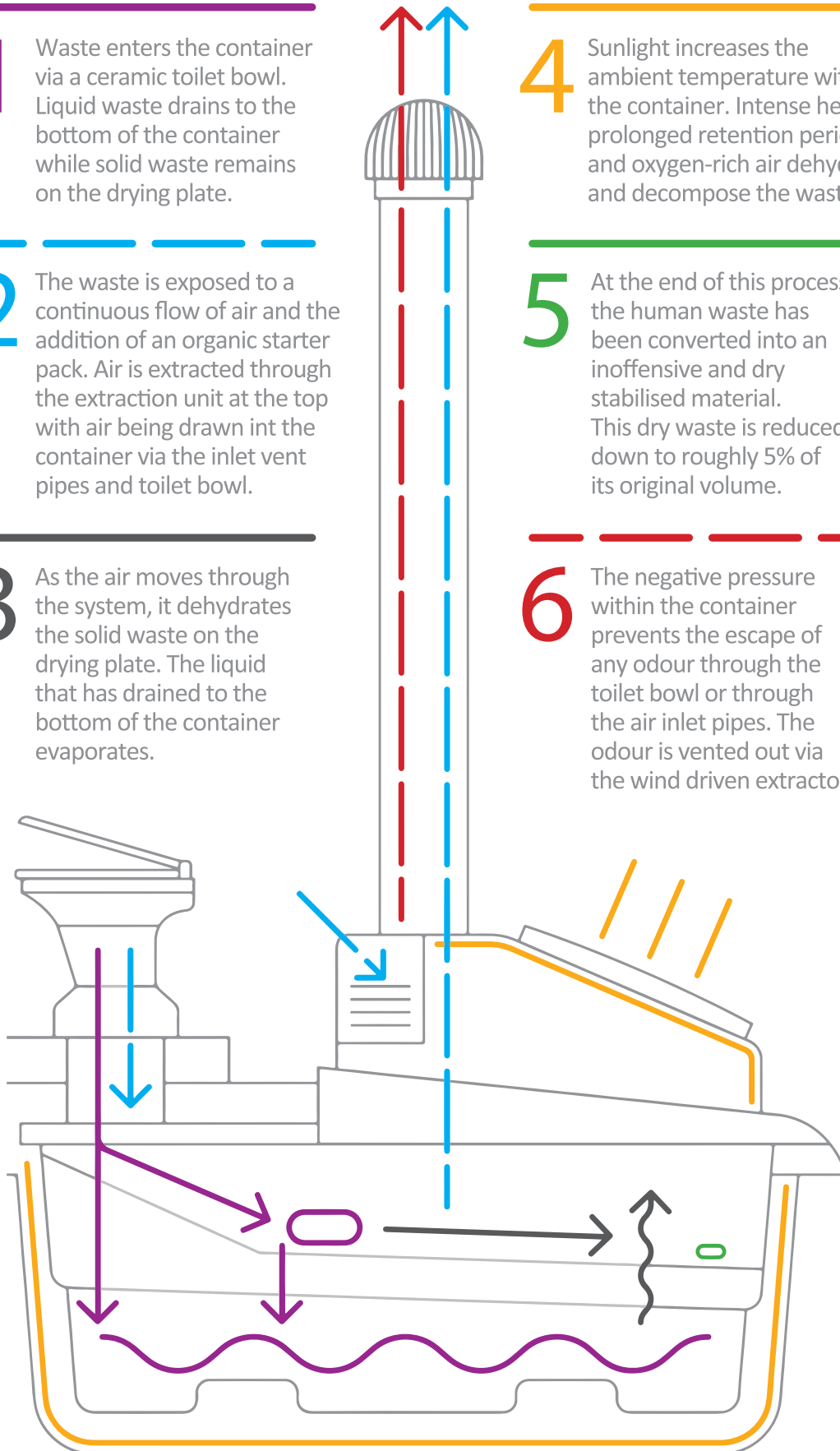
2 The waste is exposed to a continuous flow of air and the addition of an organic starter pack. Air is extracted through the extraction unit at the top with air being drawn into the container via the inlet vent pipes and toilet bowl.

3 As the air moves through the system, it dehydrates the solid waste on the drying plate. The liquid that has drained to the bottom of the container evaporates.

4 Sunlight increases the ambient temperature within the container. Intense heat, prolonged retention periods and oxygen-rich air dehydrate and decompose the waste.

5 At the end of this process the human waste has been converted into an inoffensive and dry stabilised material. This dry waste is reduced down to roughly 5% of its original volume.

6 The negative pressure within the container prevents the escape of any odour through the toilet bowl or through the air inlet pipes. The odour is vented out via the wind driven extractor.



AVAILABLE MODELS

**DOMESTIC
D2010**



1-10 users per day

**COMMUNAL
C2020**



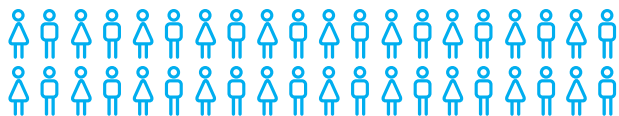
1-20 users per day

**BULK
B2030**



1-30 users per day

**INDUSTRIAL
I1040**



1-40 users per day

URINAL



1-40 users per day

**RENTAL
ENVIRO LOO EXPRESS**



ADAPTABILITY

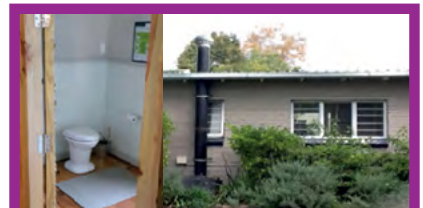
WHERE CAN IT BE INSTALLED?



VARIOUS CLIMATIC CONDITIONS



BEACHES



DOMESTIC OR "GREEN" BUILDINGS



RURAL OR URBAN



SPORTS FACILITIES



HEALTH CENTRES –
CLINICS, HOSPITALS



TOURIST AND HERITAGE SITES



EDUCATIONAL INSTITUTIONS –
SCHOOLS, CAMPUSES, COLLEGES



SECURITY SITES



URINALS



RENTAL

SUSTAINABLE

WASTE MANAGEMENT

Waste management is not a new concept; in fact, it has been around for centuries. The need for sustainable waste management services is no longer an option, but rather a necessity. Like any toilet facility, the Enviro Loo requires waste management for it to function at its optimum. As we utilise natural elements to treat and manage waste; a quarterly inspection is necessary.

When purchasing an Enviro Loo, a full waste management contract is recommended. This service is cost-effective and includes a quarterly visit and the management and removal of dried waste (only when required). We promote that the quarterly waste management servicing be conducted by trained Enviro Loo sub-contractors, as part of your waste management contract; this process ensures long term sustainability and functionality of your Enviro Loo.

The end user will be trained on how to use their Enviro Loo, as well as upskilled for the responsibility of daily janitorial cleaning. At Enviro Loo we pride ourselves on uplifting and creating jobs within communities and meet this commitment wherever possible.

Upon installation, the Enviro Loo units are registered on a cloud based management tool to provide accurate and up-to-date reporting on the sustainability and functionality of the Enviro Loo unit. Utilising GPS coordinates and graphical reporting, our clients will continuously be informed regarding all details pertaining to their asset infrastructure investment.

Access to sanitation is a universal human right.



Enviro Loo is the universal solution that saves money, the environment, and most importantly people's lives.



@EnviroLoo



@EnviroLoo.Earth

For further information visit
www.enviro-loo.com
or contact Enviro Loo on
+27 11 762 1624