



**Elsoms**

The Seed Specialists

**Vegetable Seed Catalogue  
2017 / 2018**

# Dear Customer,

**Welcome to our updated vegetable seed catalogue for 2017/2018. You'll be able to find our most popular varieties, all tried, tested and performing well over recent seasons, along with some new lines that have proved extremely successful in trials.**

Elsoms is the UK's leading independent seed company. We are 'The Seed Specialists' and our team includes specialists in each crop and each region. Building long-term relationships with our customers is at the heart of what we do. We commit to giving honest advice, never aiming for a short-term sale at the cost of a trusting relationship.

We work closely with Bejo Zaden, the world leaders in plant breeding and seed production of outdoor vegetables. Together we select the best vegetable varieties for UK growing conditions, with improved yields and excellent resistance to the pests and diseases facing UK growers today.

Our large organic seed portfolio from Bejo is industry leading and allied to this, as part of our holistic approach, we are pleased to offer an excellent range of catch and cover crops. Catch and cover crops are valuable both for organic and conventional crop production.

An exciting new development is Bejo's purchase of Agrisemen, the specialist lettuce breeding and seed production company. Their in-depth crop knowledge of lettuce breeding combined with the innovative culture of Bejo has provided a real boost to our lettuce assortment. We can now offer a great range of lettuce varieties to suit the needs of UK growers.

The Elsoms plant breeding team has been successfully developing high quality hybrid parsnip and swede varieties for many years. We're delighted to announce that we have developed a new range of herbs at Elsoms, including rocket, basil and dill. These will become available over the next couple of years so watch this space!

As well as our strength in the vegetable sector, Elsoms has been rapidly expanding in the agricultural sector. We have a wide portfolio of agricultural crops including cereals, oilseeds, energy crops and vining peas as well as a comprehensive portfolio of catch and cover crops. Our oilseed rape variety Elgar is now top of the Recommended List and our hybrid rye and wheat varieties have all performed extremely well in 2016 trials. The wheat breeding company Elsoms Wheat Ltd will be releasing its first varieties this year – all bred here in South Lincolnshire. Keep an eye out for them on the wheat Recommended List when you make your variety selections.

Finally, I would like to thank all our customers for your continued support. Please give us your feedback on how we can improve our products or increase our portfolio. For feedback or to find out how our varieties could help your business, call Elsoms Head Office, or contact your Regional Vegetable Specialist.

**We wish you all the best in your crop production for the coming year.**



Roger Keeling

“ Our mission is to develop and market excellent varieties of vegetable and agricultural crops. We aim to produce and supply top quality seed, often treated, to improve crop production with first class service. We strive for efficient and effective production processes and profits for research and development, for physical investments, for good jobs and for our shareholders who back us – all this with the professionalism, friendliness and honesty which is our tradition. ”



## Contents

Contact Us	4
Why Use Elsoms	5
Our Commitment To You	6
Seed Treatment Services	7
Elsoms Organic	8
Elsoms Research and Development	10
Pack Sizes	11
Alliums	12
Beets	16
Brassicas	17
Carrots	30
Parsnips	34
Herbs	36
Legumes	38
Salads and Diverse	40
Lettuce	42
Agricultural Division	44
Catch and Cover Crops	45
Seed Treatments	48
Production Specification	50
Production Guide	52
Terms and Conditions	55

### Symbol Key

▲ Also available as Organic

# Contact Us

## Head Office

Elsoms Seeds Ltd, Pinchbeck Road, Spalding, Lincolnshire PE11 1QG  
t +44 (0)1775 715000 f +44 (0)1775 715001 e seed@elsoms.com

### Normal office hours

8.30am to 12.30pm & 1.30pm to 5.00pm

Registered Office as above

Registered in England Number 656393



## Head Office Contacts

### Robin Wood

Managing Director  
m 07747 468850  
e robin.wood@elsoms.com

### Martin Strickson

Crop Manager - Carrot, Parsnip and Beetroot  
m 07748 144237  
e martin.strickson@elsoms.com

### Chris Bettinson

Crop Manager - Alliums  
m 07919 018865  
e chris.bettinson@elsoms.com

### David Clay

Crop Manager - Brassica  
m 07899 862732  
e david.clay@elsoms.com

### Andrew Vincent

Crop Manager - Salads, Legumes and Diverse  
m 07710 950806  
e andrew.vincent@elsoms.com

### Michelle Burton

Carrot and Beetroot Crop Coordinator  
e michelle.burton@elsoms.com

### Wendy Stacey

Alliums, Legumes, Salads and Diverse Crop Coordinator  
e wendy.stacey@elsoms.com

### Emma Ross

Crop Coordinator for Parsnip and Amateur Market  
e emma.ross@elsoms.com

### Keely Watson

Exports and Organics Crop Manager  
m 07825 941080  
e keely.watson@elsoms.com

### Marie-Laure Bayard

Asparagus Specialist  
m 07803 452922  
e marie-laure.bayard@elsoms.com

### Emma Young

Brassica Crop Coordinator  
e emma.young@elsoms.com

### Rachel Rodgers

Marketing / PR Manager  
m 07931 409307  
e rachel.rodgers@elsoms.com

## Regional Vegetable Specialists



### Alan Edmond

South West England and Wales Vegetable Specialist

t/f 01872 560644  
m 07889 761055  
e alan.edmond@elsoms.com



### Peter Tavernor

North West England Vegetable Specialist

t 01785 280339 f 01785 280778  
m 07710 950807  
e peter.tavernor@elsoms.com



### Martin Jenkins

Scotland and North-East England Vegetable Specialist

m 07702 532796  
e martin.jenkins@elsoms.com



### Sam Tyrrell

Nottinghamshire, Yorkshire and Lincolnshire Vegetable Specialist

t 01775 715000 m 07557 153850  
e sam.tyrrell@elsoms.com

## Northern Ireland Distributor

### Burkes Agri Supplies Ltd

8 Cornascribe Road, Portadown,  
Co Armagh, Northern Ireland BT62 3SS

t 02838 840225  
f 02838 841655  
m 07850 310322

# Why use Elsoms?

**“We are a strong, modern and innovative plant breeding, seed supply and seed treatment business built upon a well-established, solid foundation.”**

## We are a strong, well-established business that you can rely on

Elsoms staff bring together the professionalism, friendly outlook and teamwork of an established organisation with the innovation, enthusiasm and energy that help our customers achieve their goals.

## We are seed specialists offering local support throughout the UK

Elsoms is the UK's leading independent seed company – we are seed specialists. Our teams are made up from experts in each crop and each region, offering trustworthy, integral support to growers in all areas of the UK. We build long-term relationships with our customers by being honest, honouring our commitments and building on our reputation for sincerity and professionalism.

## Ongoing investment into new technology and facilities

Our programme of continual investment in up to date technology, training and facilities ensures that our seed is bred, selected, handled, treated, tested, packed and delivered using state of the art equipment, developed with the latest scientific advances in mind. Our constant investment and innovation give our seed and our customers the best start every season.

## Efficient and unrivalled seed treatment service

Our extensive knowledge of seed treatments covers horticultural, ornamental and agricultural crops, using the latest in seed treatment technology and processing to bring our customers the highest quality seed products available.

## Quality of seed is our highest priority

Elsoms has been awarded European Seed Treatment Assurance (ESTA) accreditation. ESTA is a universal quality assurance scheme that guarantees high quality seed with professional seed treatment application processes. We use the latest methodology to prevent and control seed-transmitted disease, investigate innovative new techniques for seed priming and treatment and we are always looking for new ways to achieve higher quality.

## Our first-class delivery and service

Our fully computerised stock system and first class stock control help us allocate orders quickly and accurately. Over 95% of our 'next day' deliveries arrive on time. You can rely on us to get your order to your door safely on the promised date.

## Great portfolio of genetics, fully tested in the UK

All of the above are complimented by the outstanding portfolio of genetics from Bejo, whose products we are proud to exclusively distribute in the UK. Bejo is a leading international vegetable breeding, seed production and seed processing organisation, offering more than 1000 vegetable varieties and representing 50 crops. We work closely with Bejo, fully testing all varieties at locations across the UK to ensure that we offer our customers the best seed for their specific growing conditions.



# Where to find us

To view our portfolio online, download our brochures or to see the latest news including variety updates, open days and events, please visit our website [www.elsoms.com](http://www.elsoms.com)

## Elsoms Open Days

We are proud to host our annual vegetable open days, showcasing our portfolio of products. Held in October, our open days provide an excellent opportunity for visitors to network, share information, speak to our technical specialists and view our excellently maintained trial site.

## Elsoms on Twitter

For all the latest news including press releases, event information and job vacancies, follow us on Twitter: [@Elsomsseeds](https://twitter.com/Elsomsseeds)

## Agriculture Contacts

### Adrian Hayler

Head of the Agricultural Division  
m 07826 937826  
e adrian.hayler@elsoms.com

### Bob Miles

Agricultural Seed Consultant  
m 07710 950802  
e bob.miles@elsoms.com

### Heather Oldfield

Agricultural Crop Manager  
m 07710 389207  
e heather.oldfield@elsoms.com

### Katie Baxter

Agricultural Crop Coordinator  
e katie.baxter@elsoms.com

### Jonathan Baxendale

Agricultural Seed Sales Specialist  
m 07779 776423  
e jonathan.baxendale@elsoms.com

### George Goodwin

Agricultural Seed Sales Specialist  
m 07866 793689  
e george.goodwin@elsoms.com

### Stephen Smith

Wheat Breeder, Elsoms Wheat Ltd  
m 07831 430452  
e stephen.smith@elsoms.com

### Mark Nightingale

Oilseed Rape Breeder  
m 07710 950800  
e mark.nightingale@elsoms.com

## Seed Treatment Contacts

### Rae Cook

Head of Seed Treatment  
m 07860 181195  
e rae.cook@elsoms.com

### Kim Baker

Seed Treatment Logistics Manager  
m 07710 389204  
e kim.baker@elsoms.com

### Audrone Vileitaite

Seed Treatment Sales Coordinator  
e audrone.vileitaite@elsoms.com

### Phillip Ayres

Technical Sales Manager, Seed Treatment  
m 07881 335816  
e phillip.ayres@elsoms.com

# Elsoms Customer Service - our commitment to you

**At Elsoms, we're continuously improving all aspects of our business, so that you can improve yours.**

## Our seed quality

We aim to supply you with the best quality seed in every delivery. **Each year our analysts check over 4000 seed lots.** We're always looking to achieve higher quality, and testing new techniques for seed priming and treatment.

At every stage of seed cleaning and treatment, a germination test is carried out to ensure that the seeds stay healthy and deliver excellent results.

All Elsoms' lab analysts are trained and qualified at the prestigious National Institute of Agricultural Botany (NIAB). Testing is carried out using international methods as prescribed by the International Seed Testing Association (ISTA). That's why you can rely on the germination figures that we supply to you.

However, a seed-testing laboratory cannot recreate all the environmental variations that a seed lot might experience in the field. So we work to standard germination procedures developed by ISTA. That means optimum conditions for germination and consistent results between laboratories.

## Seed health testing

To supply you with the healthiest possible vegetable seeds, and comply with EU regulations, we use the latest strategies to prevent and control seed-transmitted diseases.

These include seed health testing programmes, protected seed production, field inspections, seed treatments and other effective seed disinfection methods.

## ESTA

Elsoms work to the ESTA (European Seed Treatment Assurance) standard.

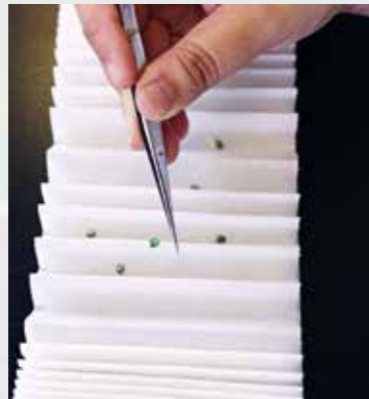
- + Universal quality assurance scheme
- + Guarantees professional and high quality seed treatment application.

## Our technical support and variety selection

Above all, Elsoms stands for first class varieties. We work closely with our main suppliers: market leaders Bejo Zaden as well as Holland Select and Gautier Semences.

We have developed our own plant breeding programme, particularly for parsnips and swede, and we run joint breeding programmes with Bejo for Brussels sprouts and purple sprouting broccoli.

Our variety trials span a huge range of crops at many UK locations. We use the data they generate to supply you with up-to-date advice and information that will help you choose the best variety for your needs.



# Seed Treatment Services

**"Early control of seedling diseases and insect pests is vital for successful crop production, and seed technology plays a significant role in obtaining the best start for your crops."**

At Elsoms we have been treating seed for over 30 years and our extensive knowledge of seed treatments covers vegetable, ornamental and agricultural crops.

We use the latest in seed technology and processing to bring our customers the highest quality seed products available. We offer an unrivalled and efficient service backed by our first class customer service and support.

## Process and products

Elsoms offer an extensive range of products and processes; please contact a member of the team to discuss a package tailored to your requirements.

## Our Seed Technology Options:

### Grading, sorting and sizing

- + Cleaner, healthier seed – better emergence in the field
- + Uniform size and improved seed drill performance – more even spacing in the field
- + Improved density, shape, length and size
- + Dust and impurity removal

### Steeping

- + Can remove germination inhibitors from the seed, facilitating germination
- + Penetrates deep into the seed coat – removes some seed-borne pathogens
- + Allows some seed types to be primed

### Disinfection/Sanitation

- + Delivers cleaner, healthier seed
- + Removal of specific seed-borne pathogens
- + Reduction in seed microbial content
- + Fungal and bacterial targets
- + Some products could be organic

### Priming

- + Improvement in germination and establishment, creating a more uniform crop
- + Better crop stands, optimising marketable yield
- + Breaking natural dormancies in various seed types

### Encrustment

- + Part way between a filmcoat and pellet
- + More regular seed shape with the minimum amount of fillers, easier to drill than filmcoated/precision seeds
- + TopKote® and OnX®

### Pelleting

- + Increases the size, weight and uniformity of the seed, maximising sowing/drilling efficiency
- + A key part of improving crop establishment
- + An ideal way of loading PPPs and their active ingredients onto seed – a key part of improved crop establishment
- + SplitKote Light 3.5®

### Filmcoating

- + High quality filmcoating to flow easily through machinery allowing easy, uniform drilling
- + Easily visible colour coded seed – visible in the soil
- + Accurate application of PPPs – an efficient and environmentally friendly way of aiding seedling growth
- + Virtually dust free, smooth coating – safer for the environment and the user

### Seed testing

- + Seed testing ensures seed quality throughout all processes
- + Continuous monitoring of seed performance allows for improvements to be made at each stage
- + Seed is tested in our laboratory by fully qualified analysts

Elsoms has a superb variety selection of organically-produced seed. Bejo Zaden, our main supplier and market leader in organic biennial vegetable seeds now has over 150 varieties in 40 species available as organic seed.

Bejo Zaden has over 15 years of experience in producing organic seed, to the same quality targets as conventional seed. Seed is produced in the most suitable climatic conditions in France, New Zealand, Italy and the USA, and new hybrids are assessed on trial fields in many locations. To support top quality seed production, the company is researching and developing new treatments against seed-borne diseases.

Our organic assortment is listed on the right, and full variety descriptions can be seen in this catalogue. Please check our website [www.elsoms.com](http://www.elsoms.com) and [www.organicxseeds.com](http://www.organicxseeds.com) for the latest information.

### Runner

Second early variety with long shanks and upright leaves. High yielding with excellent standing ability.



ROOTS & ALLIUMS	
Species	Variety
Beetroot	Rhonda
	Boro
Carrot	Miami
	Napoli
	White Satin
Onion	Yellowstone
	Hytech
	Redspark
Leek	Lancia
	Striker
	Pandora
	Runner
Shallot	Bandit
	Matador
Salad Onion	Conservor
	Parade

BRASSICAS		
Species	Variety	
Calabrese	Fiesta	
	Belstar	
Sprouting Broccoli	Santee	
Brussels sprout	Nautic	
	Doric	
White cabbage	Drago	
	Impala	
Pointed cabbage	Caraflex	
Red cabbage	Integro	
	Subaro	
	Buscaro	
	Savoy/Winter cabbage	Famosa
Cauliflower	Cantasa	
	Paresa	
	Stanton	
	Deadon	
	Chinese cabbage	Kaboko
	Cauliflower	Goodman
Skywalker		
Veronica		
Medaillon		
Belot		

### Paresa

Very late reliable variety. Usual maturity period December - March.



DIVERSE	
Species	Variety
Kohl Rabi	Korist
Radicchio	Leonardo
	Rubro
Climbing French bean	Cobra
Runner bean	Enorma
Celery	Tango
Spinach	Renegade
Radish	Rudolf
Marrow/Courgette	Tempra
Lettuce	Derbi
	Pigale
	Chandor
	Parinice
	Camarde
Coriander	Celtic
	Socca
Parsley	Gorio
	Filtro
Parsley	Krausa

### Leonardo

Large, round heads that are intensely purple with bright white midribs. Extremely vigorous variety that strongly resists bolting and shows some resistance to tip burn.



# Elsoms Research and Development

The Elsoms trials and plant breeding department is built around the following objectives:

- ✦ To breed Elsoms own parsnips, swede, turnips and specific herb varieties to sell in the UK and overseas
- ✦ To work jointly with Bejo to breed Brussels sprouts, sprouting broccoli and spring cabbage
- ✦ To trial, select and breed varieties most suited to environmental conditions across the UK
- ✦ To trial, select and breed varieties that meet the specifications of the UK vegetable market
- ✦ Address disease issues unique to UK growers by breeding resistant varieties



## What do you want to grow?

We invest heavily in our own vegetable breeding programmes and in joint breeding programmes with Bejo. Our breeding teams are constantly in touch with our loyal customer base. We want to breed and trial the species and varieties that YOU want to grow. We run trials across the UK on a wide range of species, not just those featured in this catalogue. These are available for visitors to head office to see at any time.



## Continual investment

We have a programme of continual investment to ensure that the plant breeding department are always using contemporary methodology, technology and facilities. Recent years have seen the addition of a new pathology lab, growing rooms, a microbiological cabinet, minus twenty degrees freezer and a glasshouse constructed specifically for pathology research.



## Joint breeding programmes with Bejo

The plant breeding department carries out trials and seed production in the UK in order to select breeding lines and F1 hybrids specifically for the UK market. The joint breeding programmes with Bejo help us to breed better plants by combining the expertise of both companies, giving us access to a wider genetic range.

## Technical breeding programmes

We are particularly proud of our own specialised parsnip, swede, turnip and herb breeding programmes, working with some of the UK's top research institutions in projects such as PhD doctorates or KTP's (Knowledge Transfer Partnerships). This collaboration enables us to make use of their research facilities as well as our own, combining genetic and pathology expertise.

Parsnips, in particular, are an Elsoms speciality, bred for high yield, taste, extension of harvest period, late storage, early vigour, colour and disease resistance. Our pathology staff have the ability to use DNA markers in our parsnip lines, so that we can link the phenotype with the genotype. This allows us to identify disease resistant lines as well as looking at other traits, such as crown depth, skin quality or yield, for future breeding.



# Pack Sizes

Please see the table (below) for the minimum pack size quantities.



Each seed lot is subjected to a long post-harvest process of cleaning and quality inspections. Many seeds are subsequently processed into unique product forms which include protection against fungal diseases and insects and give excellent germination quality.

## Minimum pack sizes

Pack Sizes by count (TH) or weight (KG)

Vegetable Crop	Conventional	Organic
Leek	10,000 10,000	10,000 10,000
Onion	100,000	10,000
Bunching onion	50,000 1kg	10,000 N/A
Shallots	50,000	10,000
Red beet	50,000	50,000
Brassicas	2,500	1,000
Swede F1	12,500 50,000	N/A N/A
Swede OP	500g	N/A
Coriander	500g	500g
Parsley	500g	25,000
Broad bean	2.5kg	N/A
Climbing bean	1kg	1kg
Runner bean	2kg	2kg
Dwarf bean	25,000 2kg	N/A N/A
Peas	5kg	N/A
Carrots	50,000	50,000
Parsnip	10,000	N/A
Celeriac	10,000 10,000	10,000 10,000
Celery	10,000 10,000	10,000 10,000
Courgette / Marrow	1,000	1,000
Radicchio	10,000	10,000
Fennel	10,000	10,000
Lettuce	5,000	5,000
Spinach	50,000	50,000

# ALLIUMS

Elsoms has an excellent range of Allium species from the Bejo/De Groot en Slot breeding partnership.

The onion programme continues to expand and add to our portfolio of products. Recent successes include downy mildew resistant variety Hylander, in addition to the early maturing Hysky.

We also work closely with the English Set Company who are licensed to grow and distribute our onion set varieties in the UK.

## Spring sown bulb onion

### Hybing

An early, high yielding Rijnsburger. Strong rooting helps Hybing in warm, dry conditions to produce high yields of superb round bulbs. It also has mid-term storage potential.

### Hysky

Early maturing variety, currently in trials. Potential for higher levels of resistance to Fusarium than existing varieties. Please contact us for more information.

### Hypark

A mid-early Rijnsburger, which has given excellent results. Hypark produces beautiful round, uniform bulbs and is suitable for long-term storage.

### Hybound

An early Rijnsburger which produces attractive brown bulbs. Hybound is early maturing and suitable for long term storage.

### Hytech

Excellent results in commercial practice, Hytech is high yielding and suitable for long-term storage.

### Hyway

**NEW**

Mid season variety. Good yields and suitable for long-term storage. Very low levels of sprouting seen in long-term storage.

### Hylander

Hylander has a high resistance to downy mildew. It produces good yields of round bulbs which have good storage potential.

### Armstrong

A standard late variety, which has consistently given excellent results over many years.

### Red Light

Very high yielding, early variety with short to mid-term storage potential.

### Red Tide

Maturing approximately one week earlier than Redspark, Red Tide has similar storage potential. A strong rooting system helps Red Tide produce good yields of round, attractive bulbs.

### Redspark

Hybrid red onion, which yields slightly less than Red Baron but gives a higher percentage of pre pack quality.

### Red Baron

An industry standard red onion, which continues to be a market leader. A high yielding red variety.



Spring sown bulb onions

## Bulb onion storage guide

Variety	Earliness	Yield	Skin quality	Sprouting in May	Firmness	% Dry matter	Relative storage potential		
							Short-term	Mid-term	Long-term
Spring sown – Yellow									
Hybing	8.1	104	7	6	7	11.1			
Hysky	8	104	8	8	8	11.2			
Hypark	7.1	104	9	8	8	11.5			
Hybound	8	99	9	9	8	11			
Hytech	7	105	9	8	8	11.3			
Hyway <b>NEW</b>	7.1	106	8	8	8	11.6			
Hylander	6.5	100	8	7	7	11			
Armstrong	6.2	100	8	8	8	11.5			
Spring sown – Red									
Red Light	12.2	105	7	5	6	13			
Red Tide	7.5	99	5	7	7	13.2			
Redspark	6.5	100	6	7	6	13			
Red Baron	6.3	101	5	7	6	13.3			

Every year the breeding department of Bejo/De Groot en Slot test their varieties at trial sites in the UK and Europe. The above information is based on averages from three years of these trials.

Use of sprout suppressants, cold and CA storage can alter the relative values.

## Bulb onions from sets

English Set Company are licensed to grow and distribute our range of onion set varieties in the UK. If you wish to order our onion set varieties please contact English Set Company for more information.

Bejo/De Groot en Slot are breeding varieties with characteristics specifically suited to set production. Our range includes the listed varieties:



### Troy

Brown hybrid recommended for autumn planting.

### Forum

Brown hybrid which gives attractive round bulbs from spring planting.

### Stur BC 20

Maincrop standard. An outstanding selection.

### Red Light

Very high yielding, early variety with short to mid-term storage potential.

### Red Ray

**NEW**

Uniform quality onion with excellent skin. Beautiful ruby colour. Productive with a strong root system. Good keeping qualities.

## Onion sets storage guide

Variety	Earliness	Yield	Skin	Storage & capacity*	Firmness	Heat treated	% Dry matter
Troy	14.5	110	N/A	N/A	6	No	14.5
Forum	14	90	N/A	N/A	6	No	14.5
Stur BC 20	11.7	100	8	8	8	No	15.6
Red Light	12.2	105	7	8	6	Yes	13
Red Ray <b>NEW</b>	11	105	8	9	7	Yes	15

\* Relative to other varieties grown from sets. Every year the breeding department of Bejo/De Groot en Slot test their varieties at trial sites in the UK and Europe. The above information is based on averages from three years of these trials. Use of sprout suppressants, cold and CA storage can alter the relative values.



## Over wintering brown bulb onion

### Element

A very early Japanese overwintering hybrid. Globe, uniform onions with a good shape and a good bolting tolerance. Produces good quality onions suitable for fresh market.

### Bridger

A few days later than Element, Bridger has good bolting resistance, a nice shape and improved skin.

## Over wintering onion variety guide

Variety	Earliness	Yield	Firmness	Skin after harvest	% Dry matter
Yellow					
Element	14.4	96	7	5	9.1
Bridger	14.0	102	7	7	10.1

### Key

Earliness – 1 point higher indicates harvest can be one week earlier  
Yield – figures are ratios Skin quality – rated 1-10 Firmness – higher figure the greater the firmness

The above figures are taken from Bejo/De Groot en Slot 3 year trials. We have a wider range of genetics available if required. Please contact Head Office for more details on our whole range.

## Shallot

### Ambition

A reddish-brown shallot with an attractive shape. Due to good skin and storage quality Ambition is suitable for very long storage, and suitable for spring sowing.

### Matador

Comparable with Ambition, but with a globe shape and slightly redder colour, suitable for spring sowing.

### Conservor

A high yielding variety with a nice long elongated French-type shape.



Conservor



Matador

## Shallot guide

Variety	Earliness	Yield	Skin quality in May	% Dry matter	Mild/Pungent	Shape	Suitable for peeling
Red/brown							
Ambition	6.6	126	9	17.4	5.8	Globe/elongated	+/-
Matador	6.6	125	10	17.4	5.8	Globe/elongated	+/-
Conservor	6.4	125	9	17.8	5.9	Elongated	+/+

## Salad onion

### Starlight *Allium cepa*

An upright and very vigorous cepa type. Well suited for overwintering, Starlight has a distinctive upright dark green leaf and better winter hardiness than the Lisbon types.

### Parade *Allium fistulosum*

Very attractive salad onion, which does not bulb. Leaves are strong, upright, and dark green in colour. Can be used for early to late sowings, with consistent quality.

### Performer *Allium fistulosum*

Very attractive salad onion, which does not bulb with darker green leaf than Parade. Strong, upright leaves and good resistance to mildew.

### White Lisbon *Allium cepa*

Elsoms own selection of salad onion. White Lisbon is an excellent variety for bunching. Its white stems and neat foliage make it top quality.



Performer



Starlight



Runner

## Hybrid Leek

### Rally

Very early and highly productive. Good holding ability and strong against thrips.

### Fencer

Early maturing variety very long shank suitable for prepack market. Not typically dark green but has a good appearance with white shank.

### Runner

Second early variety with long shanks and upright leaves. High yielding with excellent standing ability.

### Striker

Produces high yields of very long shanks with upright leaves and very good standing ability. Very slow to bolt and is ideal for summer and autumn production.

### Surfer

A compact hybrid for autumn and winter production.

### Curling

Good potential for Christmas and January production. Very good blue/green colour. Good shaft length for pre packing.

## Open Pollinated Leek

### Blauwgroene Autumn Pandora **ORGANIC ONLY**

Early variety of excellent uniformity with long stems and upright leaves. Vigorous growth and highly productive.

### Jolant

Early variety with upright, smooth stems and medium-long shafts. Vigorous and heavy yielding.

### Blauwgroene Winter Bandit **ORGANIC ONLY**

High yielding and uniform variety. Upright growing, with dark blue/green foliage. Produces medium long white stems of high quality.

### Swiss Giant Lancia

Very heavy cropping early variety for Summer and early Autumn. Long white shanks and strong foliage.

### Blauwgroene Autumn Lancelot

Highly productive variety with long white shanks. Dark green upright foliage and no bulbing.

## Hybrid Leek cropping guide

Variety	Jan	Feb	Mar	Apr	May	Jun	Jul	Aug	Sep	Oct	Nov	Dec
Rally												
Fencer												
Runner												
Striker												
Surfer												
Curling												

Drilling/planting Maturity

In this 12 month cropping guide, varieties are listed for harvest during their natural maturity. However, some perform quite satisfactorily from different sowing dates. Likewise, seasonal differences and cultivation methods may alter maturity.



# BEETS

Elsoms offer an excellent range of beetroot varieties from Bejo. We are pleased to introduce exciting new varieties to complement our current range.

Our market-leading portfolio this season continues to perform, with impressive results.

## Beetroot

### Action

Maincrop, late production. Excellent quality beet with smooth skin and uniform shape. Strong tops make this variety easy to harvest.

### Pablo

Versatile, market leading variety which responds very well to high density sowings. Pablo is used for early, maincrop, and late production. Very uniform shape and excellent skin quality. High yield of top quality roots with superb colour.

### Bettollo

**NEW**

Later maturing variety. Approximately 2 weeks later than Pablo, it can be sown from mid-April for main and late production. Bettollo produces high quality, uniform roots, a good round shape and an intense colour. It has relatively high brix levels which are maintained during storage, resulting in a long-lasting flavour throughout the season.

### Boldor

An attractive, smooth and round yellow beet for fresh market purposes. Unlike other golden beet varieties, Boldor can be sown early for an extended production season.

### Avalanche

**NEW**

New novel type beet, Avalanche produces distinct, pure-white roots with a round, uniform shape. Avalanche has healthy and vigorous foliage.

### Other varieties in our current range:

#### Boro

Alto (cylindrical)

Tanus (cylindrical)



Avalanche



Boldor



Pablo



Bettollo

▲ Also available as Organic

## Beet cropping guide

Variety	Jan	Feb	Mar	Apr	May	Jun	Jul	Aug	Sep	Oct	Nov	Dec
Action												
Pablo												
Bettollo <b>NEW</b>												
Boldor												
Avalanche <b>NEW</b>												

■ Sowing   
 ■ Harvest   
 ■ Storage (field or indoor)

# BRASSICAS

We are delighted to offer the superb range of brassicas from Bejo Zaden, leaders in biennial crop breeding.

Elsoms has joint breeding programmes with Bejo for; Brussels sprouts and sprouting broccoli, as well as its own hybrid swede breeding programme, reflecting a passion for breeding traditional 'British' vegetable crops.

We are always looking to improve brassica crops. The catalogue shows a selection of the portfolio and the range is continually reviewed. Contact us for more information.

## Borecole

### Reflex

Reflex is the leading borecole variety grown in the UK. It is very flexible and high yielding with a long harvest window. Reflex gives very few yellow leaves even in late winter.

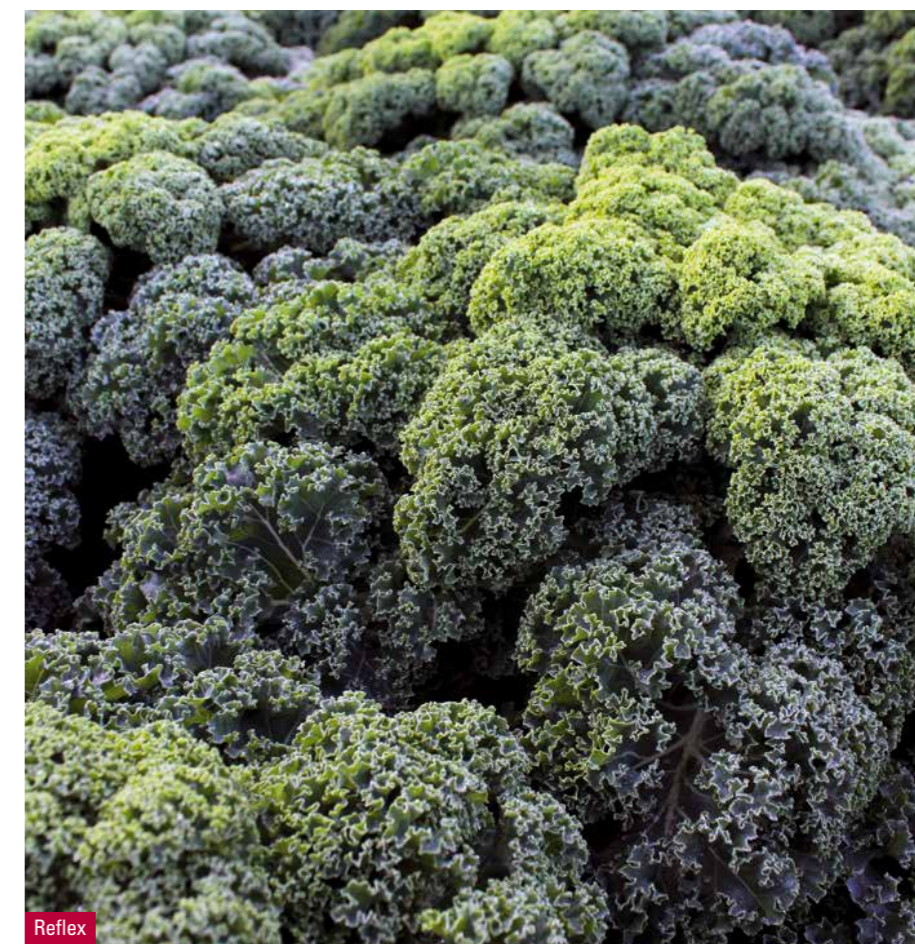
### Redbor

Redbor is the leading red borecole variety grown in the UK. It has a distinctive leaf which contrasts with standard green types.

Other varieties in our range include Starbor, Winterbor and Culinary Black Kale.



Redbor



Reflex

▲ Also available as Organic

## Borecole and Culinary Kale cropping guide

Variety	Leaf	Approx height (cm)	May	Jun	Jul	Aug	Sep	Oct	Nov	Dec	Jan	Feb
Borecole												
Starbor	Very dark green	30										
Winterbor	Dark blue/green	50										
Reflex	Green	60										
Redbor	Red	60										
Culinary Kale												
Black Kale	Long, thin black savoyed	40										

■ Planting   
 ■ Maturity

## Broccoli

### Beaumont

Well suited to summer and autumn cropping. Well-domed head. Approximately 85 days from transplant to maturity.

### Covina

Solid, domed head with medium sized beads with good colour. Harvest period July-November with an 80 day maturity.

### Delano (BJ 2970)

**NEW FOR TRIALS**

Slightly later maturing than Covina. Dark colour. Good medium-sized domed head.

Other varieties in our range include Fiesta and Belstar, both available as organic varieties.



Covina



Delano



Covina

## Broccoli cropping guide

Variety	Apr	May	Jun	Jul	Aug	Sep	Oct	Nov
Covina								
Delano <b>NEW</b>								
Fiesta								
Belstar								

Planting Maturity

## Brussels sprouts

### Davlin

Excellent plant vigour, Davlin produces beautiful round/oval sprouts, well spaced on the stem. Leaves drop cleanly.

### Dagan

Early Abacus type. Dagan has a fresh green colour, drops leaves easily with very good standing ability. Suitable for fresh market purposes.

### Marte

Very vigorous high yielding variety. Marte has good standing ability and excellent button quality. The large button size helps with the reduction in yellow leaf. Harvest period is October-November.

### Neptuno

Medium sized sprout on tall upright stems. Very good resistance to white blister. Suitable for harvest from early November through December.

### Doric

A standard high yielding variety for December harvest, Doric has good vigour and standing ability. Its upright stems make it ideal for use as stalks. Medium green, round buttons and foliage.

### Faunus

Very late, long stemmed variety suitable for fresh market as well as industry purposes.

### Hemera

**NEW**

Late harvest variety for January-February. An ideal late-maturing addition to the portfolio.



Marte



Dagan



## Brussels sprouts cropping guide

Variety	Sep	Oct	Nov	Dec	Jan	Feb	Mar
Davlin							
Dagan							
Marte							
Nautic							
Neptuno							
Doric							
Faunus							
Hemera <b>NEW</b>							

Harvesting

## Green cabbage

### Summer cabbage

#### Surprise

First early Primo type that produces uniform compact heads of an excellent quality. Suitable for pre packing.

#### Drago

Early maturing autumn-winter, dual-purpose variety for fresh market. It is vigorous with round, firm heads and attractive green outer leaves.

#### Amazon

A main season variety, ideal open market size. Good field standing, excellent colour.

**Other summer cabbage varieties in our range include Perfecta and Gazelle.**

### Autumn/winter cabbage

#### Renton

Green winter cabbage type. Renton has a fresh dark green dense and upright habit, with round and solid heads. Suitable for the autumn and early winter crop. Maturity approximately 90 days after transplanting.

#### Stanton

Stanton produces compact, dark green round heads with a medium/dense structure. A vigorous variety with an excellent standing ability that is cold tolerant. Suitable for winter and early spring production. Maturity approximately 130 days after transplanting.

#### Deadon

Hybrid variety of this traditional January King type of cabbage with dark green outer leaves. Deadon produces flat round, solid heads with a red tinge and a nice yellow internal colour. Colour appears earlier than other similar types, and can be increased with stressed growing conditions. Maturity approximately 110 days after transplanting.



## Pointed cabbage

### Pointed types

Not recommended for autumn sowings.

#### Caraflex

Well-established, very popular variety. Very attractive, smooth conical shape, producing uniform, attractive heads. Maturing approximately 75 days from planting.

#### Duncan

Suitable for all year round production. Compact attractive habit produces excellent greens and hearts. Good shelf-life with low stem to leaf ratio.

## Chinese cabbage

#### Pacifiko

A bright green foliage. Attractive slender heads with a compact, contrasting yellow heart.

#### Bilko

Approximately two weeks later than Manoko with solid, well closed heads.

**Other Chinese cabbage varieties include Manoko and Kaboko.**



## Green cabbage cropping guide

Variety	Apr	May	Jun	Jul	Aug	Sep	Oct	Nov	Dec	Jan	Feb
Summer cabbage											
Surprise	Planting		Harvesting								
Amazon		Planting			Harvesting						
Perfecta		Planting			Harvesting						
Drago			Planting			Harvesting					
Autumn/winter cabbage											
Renton		Planting					Harvesting				
Stanton			Planting					Harvesting			
Deadon		Planting				Harvesting					

Planting Harvesting

## Pointed cabbage cropping guide

Variety	Jun	Jul	Aug	Sep	Oct	Nov	Dec	Jan	Feb	Mar	Apr	May
Duncan		Harvesting									Harvesting	
Caraflex		Harvesting										Harvesting

Harvest period from spring plantings

Harvest period from autumn plantings

## Red cabbage

### Small heads

#### Primero

First early pre pack, recommended for close spacing. Usual harvest period mid July-mid August. Approximately 75 days from transplant to maturity.

#### Kosaro

A very promising, productive Primero type with Fusarium resistance. Suitable for early market.

#### Integro

Good shape, ideal for fresh market. Suitable for harvest in August and September. Approximately 95 days from transplant to maturity.



#### Lodero

#### CLUBROOT

Main crop storage red cabbage. This variety shows high resistance to one or more races of the club root fungus. Medium sized heads suitable for pre pack use. Good deep red colour.

#### Klimaro

A very popular variety. Long storing with strong sales. Suitable for pre pack and processing. Very good internal colour.

### Large heads

#### Buscaro

Specialist variety for processing only where head weights of 2.5kg are required. Suitable for September-October harvest.

#### Huzaro

A very consistent performer, Huzaro is a standard long-term storage variety. Approximately 140 days from transplant to maturity.

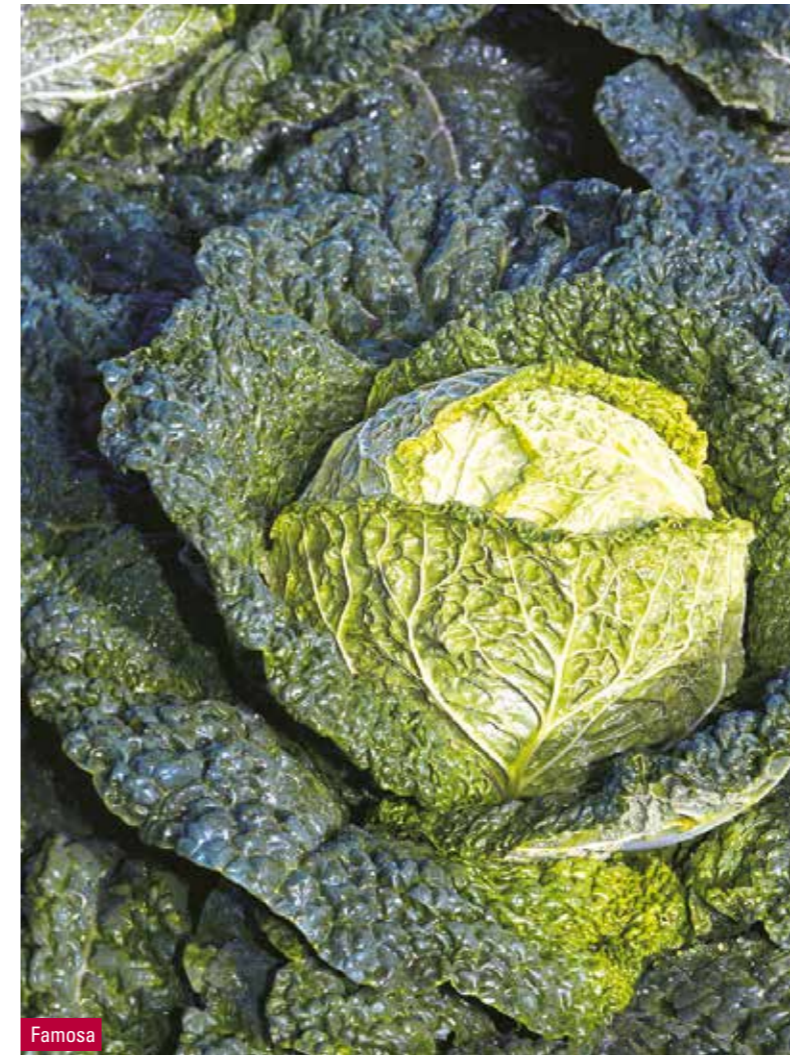


## Red cabbage cropping guide

Variety	Approx transplant to maturity time (days)	Uses	Storage potential	Apr	May	Jun	July	Aug	Sep	Oct	Nov	Dec
Primero	75	Pre pack/fresh	Limited									
Kosaro	75	Pre pack/fresh	Limited									
Integro	95	Pre pack/fresh	Limited									
Lodero	135	Pre pack	Long-term									
Buscaro	110	Processing	Limited									
Klimaro	135	Pre pack/fresh/processing	Long-term									
Huzaro	140	Pre pack/fresh/processing	Long-term									

Planting

Harvesting



## Savoy cabbage

#### Alcosa

Vigorous early plant habit with attractive, solid heads.

#### Famosa

Early maturing with very attractive fresh green colour. Compact and solid heads. Suitable for August and September harvest.

#### Clarissa

Bridges the gap between the very early varieties, such as Famosa, and the late autumn types. Produces attractive heads from a medium, vigorous plant habit. Best suited to harvest during September and October.

#### Sabrosa

Sabrosa has dark green deeply savoyed leaves and produces a neat head from a compact frame.

#### Firensa

Short core with attractive colour and presentation. Good frost tolerance. Usual maturity period is October to December.

#### Barbosa

Compact winter hardy variety with good commercial results. For the late autumn/winter period. Easy to cut and pack.

#### Wirosa

Excellent quality with long standing ability. Finely blistered leaves with a vigorous plant habit. Usual maturity period October-February.

#### Wintessa

Extremely good standing ability with short stem and very winter hardy. Very late maturity. Usual maturity period is December-March.

#### Paresa

Very late reliable variety. Usual maturity period December - March.

**Interesting new varieties will begin trialling in 2017/2018. Please ask for details.**

## Savoy cabbage cropping guide

Variety	Approx days from planting to maturity	Approx length of cut (days)	July	Aug	Sep	Oct	Nov	Dec	Jan	Feb	Mar
Alcosa	71	7									
Famosa	78	14									
Clarissa	108	20-25									
Sabrosa	140	30									
Firensa	150	40									
Barbosa	160	40									
Wirosa	162	45									
Wintessa	199	70									
Paresa	195	70									

Maturity

## White cabbage

### Early processing varieties

#### Almanac

High yielding variety. Approximately 90 days from transplant to maturity.

#### Passat

**NEW**

Ideal white cabbage variety to follow Almanac. Large white head, good internal quality.

#### Typhoon

Produces large, dense heads. Suitable for harvest both direct from the field and as mid-term storage. Very healthy and strong against thrips.

### Maincrop processing varieties

Suitable for long-term storage.

#### Colmar

Produces very healthy clean heads with very long-term storage potential.

#### Counter

Predominantly used for coleslaw production. Very healthy and high yielding.

#### Expect

Healthy white cabbage with a short stem and green leaves. Produces medium to large heads with a very dense internal structure.

**Other white cabbage varieties in our range include Perfecta, Impala, Lennox, and Sircon.**

### Pre pack varieties

#### Drago

▲

Early maturing autumn white. Well suited to close spacing. Can be peeled and marketed as a pre pack white cabbage. Healthy clean variety for mid-term storage. Matures mid-September to mid-October. Approximately 130 days from transplant to maturity.

#### Reaction

Healthy round kilo cabbage with long-term storage potential. Reaction has been a consistent performer in trials over the past few years. Our earliest long-term storage, small white cabbage. Approximately 130 days from transplant to maturity.

#### Kaluga

**NEW**

Our new long-term storage variety.



## White cabbage cropping guide

Variety	Mar	Apr	May	Jun	Jul	Aug	Sep	Oct	Nov
Almanac									
Passat <b>NEW</b>									
Typhoon									
Colmar									
Counter									
Expect									

Planting Harvesting

## Summer/autumn cauliflower

#### Jerez

Maturing 3-4 days after Flamenco. Jerez is a very versatile summer/autumn cauliflower. Produces first class curds from 'face pack' through to large. The plant has upright, healthy foliage with an attractive clean base.

#### Liria

Produces medium size curds with fine structure and good wrap with leaves opening up at harvest. Suitable for summer and early autumn harvest. 80 day maturing variety. Upright habit allows this variety to be a two cut product.

#### Toledo

**NEW**

Strong, vigorous, very good solid compact heads. Similar in maturity to Arano.

#### Arano

Healthy vigorous variety with dark green upright leaves. Produces solid, well covered, compact curds. Maturity approximately 93 days after transplanting.

#### Skywalker

▲

Outstanding autumn cauliflower with 95-110 days to 50% cut. Skywalker has a very clean base. Deep white, well protected curds.

## Late autumn cauliflower

#### Telde

October/ Nov harvest. Vigorous plant with clean leaf and good frame. Visible curd at harvest.

**Other summer/autumn cauliflower varieties in our range include Oviedo, Flamenco, Tarifa, Fargo and Cantabria.**

## Green/Romanesco cauliflower

#### Veronica

▲

Excellent vigorous romanesco variety for late summer and autumn.

#### White Gold

White Gold has a more compact habit than Veronica. It is suitable for harvest in summer/autumn.



## Summer/autumn and green/Romanesco cauliflower cropping guide

Variety	Approx maturity time (days)	Feb	Mar	Apr	May	Jun	Jul	Aug	Sep	Oct	Nov	Dec
Summer cauliflower												
Oviedo	69											
Flamenco	76											
Jerez	80											
Liria	81											
Tarifa	81											
Toledo <b>NEW</b>	89											
Fargo	92											
Arano	93											
Skywalker	96											
Green/Romanesco cauliflower												
White Gold	89											
Veronica	91											
Late autumn cauliflower												
Belot	Autumn x Roscoff											
Maginot	Autumn x Roscoff											
Late Autumn cauliflower												
Cantabria	Autumn x Roscoff											
Telde	Autumn x Roscoff											
Belot	Autumn x Roscoff											
Maginot	Autumn x Roscoff											

Planting Harvesting Harvesting SW England Harvesting SE England Harvesting Cornwall Harvesting E England

We recommend these autumn cauliflower varieties are not planted before early July.

## Cornwall Winter cauliflower types

### Paciano

Vigorous upright leaf habit with a visible white curd.

### Gerona

Healthy plant with good cover.

### Baterno

Vigorous upright leaf habit with a white curd and good wrap.

## Winter cauliflower cropping guide - Cornwall

Variety	Nov	Dec	Jan	Feb	Mar	Apr	May
Paciano							
Baterno							
Medaillon							
Madiot							
Mystique							
Gerona							
Isadora							
Tempest							
Vogue							
Jerome							
Nomad							
Fletcher							
Cartegena							

 Maturity



## Lincolnshire Winter cauliflower types

### Fletcher

May harvesting with good curd quality.

### Cartegena

Good vigorous plant with well-protected curds which open at harvest.

### Seth

Trials only. Mid-late May harvest period, well protected with good vigour.

### Douglas

Late - April maturing Walcheren cauliflower with good protection and a deep white curd. This variety has performed well in varying weather patterns in the past few years.

**NEW**

**NEW**



## Winter cauliflower cropping guide - Lincolnshire

Variety	Mar	Apr	May
Fredor			
Isadora			
Tempest			
Gerona			
Jerome			
Corella			
Vogue			
Nomad			
Admirable			
Douglas <b>NEW</b>			
Chester			
Fletcher			
Cartegena			
Seth <b>NEW</b>			

 Maturity



## Kohl rabi

### Kolibri

Mid-early variety. Purple skinned with flattish round shape and excellent white flesh quality.

### Korist

Very early, white skinned variety suitable for forcing. Flattish globe shape with mild, crisp flesh and holds well without getting woody. Korist has strong, erect and vigorous foliage.

Other varieties include **Korridor (organic only)** and **Kossack (ideal for large heads/processing)**.



Kolibri



Korist

## Kohl rabi cropping guide

Variety	Skin colour	Flesh colour	Apr	May	Jun	Jul	Aug	Sep	Oct	Planting	Maturity
Kolibri	Purple	White									
Korist	White	White									

## Swede

### Tweed

Our leading hybrid Swede from our own breeding programme. Uniform, globe shaped roots with a vigorous early growth habit.

### Esk

**NEW**

This new and exciting main season variety has been bred by Elsoms own vegetable breeding team. Esk is a traditional globe shape with a vibrant purple/cream skin colour and short neck. It has been successfully trialled on all soil types and maintains a consistently uniform pack-out yield.

### Helenor

Suitable for maincrop/late production of pre pack specification swede. Good globe shape, with a neat neck and root. Deep colour is achieved early in root development. Excellent flesh quality, and a sweet taste.

### Emily

Open pollinated variety from our breeding programme. Emily produces a larger, slightly flatter root than Helenor. Purple skin and cream flesh. Very winter hardy.



Tweed



## Sprouting broccoli

### Purple

#### Santee

The market leader for summer and autumn harvest. A beautiful, bushy plant which is suited to multiple harvesting from June to early November. Can also be used in the spring.

#### Rioja

One of our most recent introductions, Rioja has a very vigorous habit which is suited to early spring harvests.

#### Mendocino

Very uniform hybrid producing good yields of excellent quality spears. Follows Santee and Rioja giving consistently high quality in this 'early maincrop' period.

#### Claret

First hybrid-sprouting broccoli, bred by Elsoms. Very good quality and uniformity. Large vigorous plant producing heavy yields of quality spears.

#### Pozo

Good yielding Claret type. Late maturity harvesting 7 days after Claret. Winter hardy. Deep purple spears. Very useful to extend the season maturing 250 days after transplanting.

#### Bonarda

Late maturing with good deep purple spears. Strong yielding late variety.

### White/gold

#### Burbank

Our first white/gold hybrid, producing a strong, vigorous plant with a high yield of succulent spears.



Rioja



Santee



Bonarda

## Sprouting broccoli cropping guide

Variety	Feb	Mar	Apr	May	Jun	Jul	Aug	Sep	Oct	Nov	Planting	Maturity	
Purple													
Santee													
Rioja													
Mendocino													
Claret													
Pozo													
Bonarda													
White/gold													
Burbank													

# CARROTS

Elsoms market and distribute Bejo Zaden's market leading range of carrot varieties in the UK, working closely with them to develop these varieties.

All of our new carrot varieties are trialled and tested in UK conditions over a number of years to ensure we select the varieties most suited to your local circumstances and requirements.

## Nantes

### Nominator

For very early production and suitable for the earliest sowings. Nominator produces attractive and cylindrical roots with approximately 96 days from sowing to maturity.

### Norwich

Standard variety with upright foliage. It is very versatile and reliable with bulky, strong and attractive roots. Approximately 104 days from sowing to maturity.

### Norfolk

Mid-season maturing variety with very vigorous, healthy and upright foliage. Norfolk produces very attractive, smooth, bright and cylindrical roots. Approximately 109 days from sowing to maturity.

### Nairobi

The most versatile variety in our range, it can be used for the earliest polythene-covered sowings through to late for over wintered, straw-covered crops. Nairobi has high yield potential. Approximately 112 days from sowing to maturity.

### Natuna

Smooth, bright coloured roots of exceptional quality. Natuna is mid-season maturing with vigorous, healthy tops. Shows good strength against breaking and splitting. This variety should not be sown before 1st April. Approximately 117 days from sowing to maturity.

### Miami

#### ORGANIC ONLY

Versatile, consistent and reliable variety with vigorous, early growth. Miami has a very healthy, upright foliage with strong, high-quality and cylindrical roots. It is suitable for a long production period and has attractive roots with excellent flavour. Approximately 117 days from sowing to maturity.

**B F**

### Nipomo

Extremely healthy, vigorous and upright foliage. Nipomo performs best on peat/black soils and bodied sands. Approximately 127 days from sowing to maturity.

**F S**

### Nerac

A standard variety which is versatile and consistent. Nerac performs best on peat/black soils and bodied sands. Approximately 130 days from sowing to maturity.

**F S**

### Other varieties in our range include Newcastle (F S) and Nigel (F)

The typical uses are shown next to each variety. However it is possible that some may be suitable for other uses too.

- F** Fresh Market
- P** Processing
- B** Bunching

- S** Field Storage
- Ba** Baby
- Sn** Snack

Interesting new varieties coming through trialling all the time. Please contact us for further information.



▲ Also available as Organic

## Nantes cropping guide

Variety	Jan	Feb	Mar	Apr	May	Jun	Jul	Aug	Sep	Oct	Nov	Dec
Nominator												
Norwich												
Norfolk												
Nairobi												
Natuna												
Miami												
Nipomo												
Nerac												

■ Sowing    
 ■ Harvesting    
 ■ Possible extension of harvest period by field (straw covered) storage





## Coloured

### White Satin

A long, slender white root. Approximately 95 days from sowing to maturity.

### Yellowstone

Long cylindrical root. Approximately 139 days from sowing to maturity.

### Purple Haze

Produces purple carrots with an orange centre. Approximately 85 days from sowing to maturity.

### Purple Sun

Conical Nantes with a very intense purple colour and a cream centre. Approximately 135 days from sowing to maturity.

### Deep Purple

A purple flakkee with an intense colour. Approximately 126 days from sowing to maturity.

### Rainbow

A range of attractive colours (not purple). Approximately 190 days from sowing to maturity.

▲ F

▲ F

F

F

F P

F

## Processing (Berlicum/Flakkee)

### Bangor

Early maturing Berlicum type which is very high yielding. Approximately 110 days from sowing to maturity.

### Blanes

New early maturing Berlicum type. Very healthy, vigorous foliage. High yield potential.

### Bastia

Early maturing Flakkee type, suitable for early sowings. Bastia has an intense and consistent colour. Approximately 130 days from sowing to maturity.

## Chantenay

### Chantenay Red Cored

Widely used and standard open-pollinated stock. Recommended seed rate of 7.5-10million seeds per hectare; lower densities will produce larger roots. Approximately 96 days from sowing to maturity.

F Fresh Market

P Processing

B Bunching

S Field Storage

Ba Baby

Sn Snack

F P S

F P S NEW

F P S

F S Ba



## Processing (Berlicum/Flakkee) cropping guide

Variety	Jan	Feb	Mar	Apr	May	Jun	Jul	Aug	Sep	Oct	Nov	Dec
Bangor												
Blanes NEW												
Bastia												

■ Sowing ■ Harvesting



## Bunching carrots

### Mokum

Early maturing, producing attractive, cylindrical roots. Relatively short, but healthy foliage. Attractive colour with a sweet flavour. Approximately 88 days from sowing to maturity.

Ba F Sn

### Napoli

Early maturing, versatile variety which can be sown from very early until late. Good root to top ratio. Approximately 90 days from sowing to maturity.

▲ F B

## Imperator

### Ibiza

Imperator of high quality, producing long, slender cylindrical roots. Good flavour and colour. Approximately 118 days from sowing to maturity.

F Sn

## Bunching and Imperator cropping guide

Variety	Jan	Feb	Mar	Apr	May	Jun	Jul	Aug	Sep	Oct	Nov	Dec
Mokum												
Napoli												
Ibiza												

■ Sowing ■ Harvesting ■ Possible extension of harvest period to field (straw covered) storage



# PARSNIPS

At Elsoms we produce our own parsnip varieties in our advanced breeding and research programmes. We have made significant investments in plant breeding and seed production to ensure that we can supply you with the best varieties to meet your needs.

## Varieties

▲ Also available as Organic

### Pacific

An early maturing variety suitable for the earliest of parsnip sowings. High yield potential producing bulky, well-filled roots with an attractive colour.

### Palace

Established market leading variety. It is suitable for a wide production period, from early until main crop. Palace is high yielding with shallow crowns and a good weight distribution down the root. Ideal pre pack variety. Also suitable for processing purposes.

### Picador

Extremely vigorous growth habit with a very high yield potential. It handles well in the pack house and responds well to high density production. Also suitable for processing purposes.

### Paris

Mid-season maturing variety with good yield potential. It produces attractive roots with a good colour. Very good weight distribution with storage potential.

### Panorama

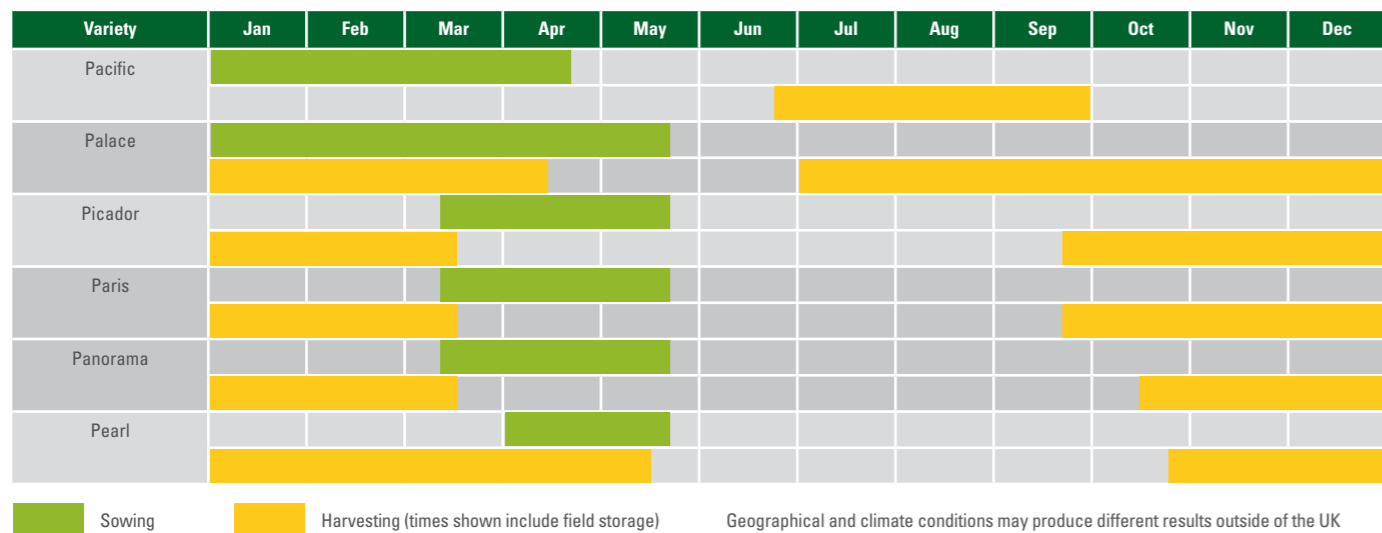
Main crop maturing, producing relatively long, well-filled roots. Very attractive, smooth, white roots. Good weight distribution throughout the root. Panorama has a vigorous growth habit with a high yield potential. It has good levels of disease resistance.

### Pearl

Mid-season to late maturing. A uniform variety producing attractive root quality with a good white colour. Very good root weight distribution. Trials experience indicates very long-term field storage potential.



## Parsnip cropping guide



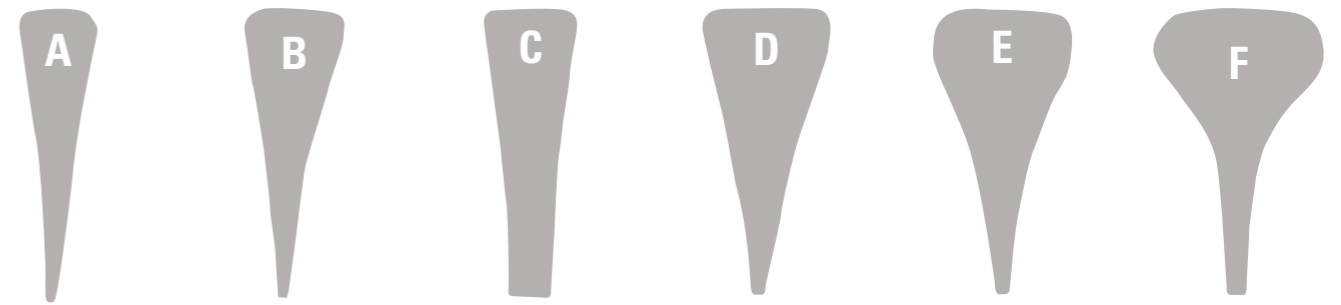
## Parsnip variety information

	Approx. days to Harvest *	Leaf Vigour **	Root length**	Skin Quality**	Shape***	Crown depth**	External colour**	Canker Resistance**	Field Storage Potential**
Pacific	130	7	5	5.5	E	5	8.5	6	short
Palace	140	6	6.5	5.5	D	6.5	6.5	7	med - long
Picador	140	8	7.5	6.5	D/E	6.5	7.5	7.5	medium
Paris	140	6	7	7.5	C	7	7.5	7.5	medium
Panorama	150	6	8	8	C	8	8	7.5	medium
Pearl	150	5.5	5	7.5	C	8	7.5	7.5	long

\* Days to harvest figures shown relate to optimum maturity and do not relate to possible extension of harvest period by storage.

\*\* 1 to 9 (1 = very low/poor 9 = very high/good).

\*\*\* Shape.



# HERBS

Elsoms is committed through breeding and research to improve the range and quality of herb species available to our customers.

Elsoms distribute a specialist range of herb species and varieties in the UK.

## Basil

▲ Also available as Organic

### Red basil

#### Ramsey

Compact plants with dark red pointed leaves. Suited to pot cultivation.

### Thai basil

A very good, sweet aromatic taste and pleasant, exotic fragrance.

### Lemon basil

Lemon basil with fine leaves, combining both a lemon and basil flavour in one variety.

### Sweet basil

#### Twenty

Genovese type which has been specifically bred for pot cultivation.

#### Boston

Dark green variety, compact for all year round cultivation.

## Coriander

### Filtro

Bred especially for leaf production. It is fast growing with broad deep green coloured leaves. Slow to bolt, and heavy yielding.

Our seed is tested routinely for *Pseudomonas syringae* pv *coriandricola*. Hot water treatment is used when appropriate and is available on request.



## Chives

### Gedney

Suitable for protected and outdoor cultivation. Vigorous upright habit, medium thick, dark green leaves.

## Dill

### Moulton

Dark blue/green leaf, the plant has a vigorous habit but is slow bolting.

## Parsley

### Rialto

Large-leaved plain parsley with excellent taste. Heavy cropping with dark green leaves.

### Favorit

Very dark green variety with good stem length. Semi-curved leaves with long standing ability and heavy yields.

### Moss curled, 2 Krausa

Densely curled and long-stemmed variety. Good rich, green colour. Holds very well without deterioration.

### Moss curled, 2 Petra

Heavy yields of large densely curled leaves on long stems. Continues cropping over a long period and is dark green in colour.



## Salad rocket

### Rocket

Half-hardy annual with mid to dark green leaves.

### Wild Rocket

Half-hardy annual with narrower, more serrated leaves.

## Sweet fennel

### Sweet fennel

Erect growing plant with dark green, lacy foliage that can be used as a garnish with a flavour between aniseed and celery.



# LEGUMES

Elsoms are the UK distributors for Holland Select, a family owned company which has specialised in breeding many legume crops for over 100 years, through three generations.

## Broad bean

▲ Also available as Organic

### De Monica

De Monica is a new, early, high yielding variety bred by Holland Select. It is a long day variety specifically bred for the fresh market. A high proportion of the beans on each plant mature together, helping to reduce harvesting costs. Suitable for over wintering.



De Monica



Cobra

## Broad bean characteristics

Variety	Approx plant height (cm)	Approx plant height (cm)	Comments
De Monica	75	14	A new, very high yielding early maincrop variety
Witkiem Manita	75	15	Popular, good yielding early variety

## Climbing bean

### Cobra

Round podded, black seeded variety bred by Holland Select. Pods are approximately 7-9mm in diameter and 20cm long. It is early maturing and suited to both indoor and outdoor production. Cobra has a good taste and very good shelf life.

## Dwarf French bean

### Faraday

Uniform and high yielding, slightly glossy with good vigour. Mid-high pod attachment giving straight, fine pods.

### Parker

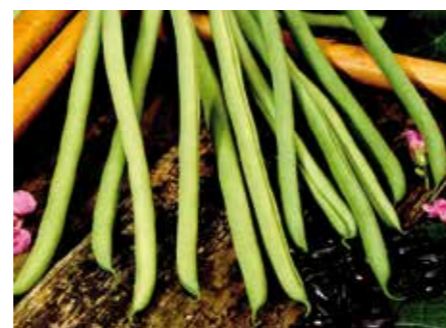
A high yielding variety with dark green, round glossy pods of medium length. Can be used for the fresh or processing market.

### Stanley

Medium long, green pods with good uniformity. High yielding with resistance to halo blight and anthracnose.

### Endeavour

Larger than Stanley this variety has outstanding yield with a very slow seed development which allows a wide harvesting window.



## Dwarf French bean characteristics

Variety	Pod diameter (mm)				Pod characteristics				Comments
	6.5-8	8-9	9-10.5	>10.5	Length (cm)	Colour	Maturity	Plant height (cm)	
Faraday	70%	30%	0%	0%	13-14	8	2	50	Uniform
Parker	0%	40%	60%	0%	14-15	8	0/+2	55	Long straight pods
Stanley	0%	0%	80%	20%	12-13	7	0/+2	50	High yielding
Endeavour	0%	0%	10%	90%	14-15	8	+2/4	55	Very productive variety in this range

Variety information supplied by Holland Select from their trials in The Netherlands.  
Colour score 1 = pale green, 9 = dark green.

## Runner bean

### Enorma

Very long, slender pods of excellent quality and scarlet flowers.

### White Swan

Refined White Emergo type, with very early vigour, producing heavy yields of quality pods.

### HS 787

Uniform pods with a smooth skin finish.

## Runner bean characteristics

Variety	Approx pod length (cm)	Flower	Seed	Stringless	Comments
Enorma	30-32	Red	Purple	-	Excellent quality, long, straight, narrow pods
White Swan	27-28	White	White	-	Has better heat tolerance than White Emergo and retains flowers better
HS 787	25-28	Red	Black/Red	-	Less blush with a smooth skin finish



Enorma



HS787

## Mange tout pea

**Shiraz** Bred by Elsoms, Shiraz is a purple podded snow pea type. Shiraz produces beautiful flat, purple pods with very slow seed development.



Shiraz



Shiraz

# SALADS AND DIVERSE

**Elsoms continues to expand in salads and diverse crops. Bejo are world leaders in a number of salad crops.**

The expert breeding and selection team is dedicated to a range of species, particularly celery, fennel, radish and speciality iceberg lettuce. The Bejo asparagus programme now includes some new and exciting hybrids with excellent taste quality and yield. We are also offering lettuce from Gautier Semences. Salad and diverse crops feature in our trials and visitors are welcome.

## Asparagus

We have a number of trials in the UK, drawing on material from Bejo Zaden's major asparagus breeding programme. We can offer seed or supply crown raiser contacts if required.

### Cumulus

100% male hybrid variety particularly suited for white production. The tips are uniform, thick, high quality and well closed. The variety is early maturing.

### Erasmus

A unique purple 100% male hybrid variety. Excellent quality spears with good tip closure and high yields.

## Celery

### Tango

Highly productive mid-green variety with long and very smooth petioles. Can be used in spring, summer and autumn. Good resistance against black heart.

### Plato

Tall habit with long, very straight petioles. Uniform cross section and small spoons. Field standing is good with excellent taste. Suitable for spring, summer and autumn production.

### Jive

A bolt tolerant variety which is suitable for spring, summer and autumn cropping. Tall smooth apple green petioles with small spoons. Has a juicy crunchy texture without string. A very versatile variety suitable for market, sticks or hearts production.

### Lambada

A main crop apple green variety, ideal for sticks and high quality hearts due to its very uniform long petioles and small spoons.



Erasmus



Jive



Lambada



Tango

▲ Also available as Organic

## Celeriac

### Brilliant

Early variety with very smooth, round roots and excellent flesh without discolouration. Can be stored over a long period, is recommended for processing, and has a dark green leaf.

### Rowena

Excellent main crop variety with good bolting tolerance. Smooth, round roots with strong foliage. Used for industry, fresh market and storage. Dark green leaf.

## Courgette

### Tempra

High yielding with dark green, long cylindrical fruits.

### Celeste

Early, with dark green cylindrical, uniform fruits. High yielding over a long growing season. Resistant to ZYMV.

### Floridor

Unique yellow round courgette, ideal for stuffing, giving colour and taste to meals.



Solaris



Celeste

## Florence Fennel

### Solaris

A fast growing, early variety. Ideally suited for spring and early summer. Maturity approximately 73 days after transplanting.

### Rondo

This is an early variety suited to summer cropping. Bulbs are round with maturity approximately 75 days after transplanting.

### Antares

NEW

A stable new introduction suited to summer production follows on nicely from Solaris in a continuity programme. Maturity approximately 72 days after transplanting.

### Orion

Best suited for Autumn production with round bulbs, white and firm, giving high yields. Maturity approximately 75 days after transplanting.

## Radish

### Rudolf

Round, red and suitable for outdoor production. Short tops producing high yields.

### Rolex

A very uniform, round red radish. Consistently high yielding with neat leaf and root attachment. Good internal structure and resistant to cracking.

### Rosetta

Is a medium top variety with upright foliage producing brilliant round red bulbs of 2.5 – 3.5cm in diameter. It has a good internal structure and is good against splitting.

### Roatan

A vigorous tall top which is two or three days quicker to mature than the rest of the range. This makes it ideal for early spring sowings and when sowings have been delayed due to the weather. It is also capable of producing bright red bulbs in excess of 4cm without splitting.



# LETTUCE

“Agrismen’s lettuce experts and our Bejo specialists have joined forces to work on the integration of processes and the first new additions to our lettuce range to join the existing popular varieties from Gautier Semences.”

## Continental

### Camarde (Red Oakleaf)

Deep red. Open hearted with a well filled base. BL 16-32, Nr:0

### Parnice (Green Oakleaf)

An attractive green oakleaf, compact with a closed head. Good tolerance to tipburn and bolting. BL 16-32 Nr:0

### Lilibel (Green Batavia)

**NEW**

Very well filled heads with a refined, curled leaf. Short cored and good tolerance to breakdown. Well suited to summer production.

### Sementel (Green Batavia)

**NEW**

An upright frame with plenty of vigour. Attractive dark green without browning. Suitable for spring and autumn production. BL 16-32 Nr:0

### Celtic (Green Batavia)

Well savoyed bright green batavia, with an open habit and short cored. Suitable for summer production. BL 16-32 Nr:0

## Little Gem

### Senna (Green Gem)

An attractive light green, semi-savoyed outer leaf with contrasting yellow heart. A reliable variety with good holding ability and good bolting tolerance. BL 16-26,28,32 Nr:0

### Derbi (Green Gem)

A traditional dark green gem. Good resistance to summer bolting and tipburn. BL 16-26,28,32

### Socca (Green Gem)

An upright semi-open hearted medium green head with yellow hearts. Good bolting resistance. BL 16-26,28,32

### Pigale (Red Gem)

An attractive red gem with contrasting yellow hearts. Good resistance to bolting and tipburn. BL 16,28,30-32 Nr:0



Socca



Chandor

## Specialist outdoor

### Gorio (Butterhead)

Voluminous plant with a semi-open head. Easy to process and deleaf and high yielding. BL 16-28,30-32 Nr:0

### Rubygo 1 (Multi-leaf Red Batavia)

A unique multi-leaf with three dimensional strong leaves and an excellent contrast from red to green. Good handling/processing resistance and shelf-life. A unique square leaf ideal for sandwich garnishing. Suitable for spring, summer and autumn production. BL 16-28, 30-32 Nr:0



Rubygo 1

### Romaine

#### Chandor

A traditional large framed, dark green romaine. A late maturing, slow to close head with good tipburn tolerance. BL 16,21,23,32

### Lollo Bionda (AS76-004)

**NEW**

Mid to dark green open heads with very finely curled leaves. A leaf type that will suit both sandwich production and fresh whole head. A high quality product. BL 16-32 Nr:0

### Lollo Rossa Double Red – Matelo (SR320)

Good vigour in cold growing conditions make it ideal for spring and autumn production. BL 16-28,30-32 Nr:0

### Lollo Rossa Triple Red (AS78-140)

**NEW**

An upright habit with open dark red heads. Easy to harvest with a good resistance to tipburn. Limited availability for introduction trials in the 2017 season. BL 16-32

## Iceberg

### Bloomberg (spring production)

A vigorous bright green plant suitable for 10's only. Short cored for spring production only. Open habit internally giving field standing ability. BL 16-32 Nr:0

### Rumours (spring/early summer production)

A compact habit with good vigour producing well filled heads for fresh market and processing. BL 16-32 Nr:0

### Times (spring/summer production)

A compact habit with a neat wrapper leaf wrapped leaf which is suitable for fresh market and processing during the summer. BL 16-32 Nr:0

### Iceberg new introductions:

Bejo are now taking a fresh look at lettuce and have many new lines which will be trialed and introduced.

## Radicchio

### Raffaello

**NEW**

Maturing between Rossini and Corelli offering improved quality in the transition from summer to autumn production.

### Canaletto

**NEW**

Maturing between Corelli and Rubro to strengthen the autumn/early winter production continuity.



Leonardo



Renegade

## Spinach

### Renegade

Dark green variety, used in industry or fresh market. Good rounded, smooth leaves with an upright growing habit. Mildew resistance 1-7, 11, 13, 15.

## Radicchio harvest programme

Variety	Jan	Feb	Mar	Apr	May	Jun	Jul	Aug	Sep	Oct	Nov	Dec
Botticelli												
Leonardo												
Rossini												
Raffaello NEW												
Corelli												
Canaletto NEW												
Rubro												
Fiero												

Planting Harvesting Storage

Cropping period for Rossini and Rubro is dependant on weather conditions during autumn and early winter. Both Rossini and Leonardo can be stored for short periods. Please contact us for further details about our Radicchio programme. Leonardo may show more green outer leaf during the Summer period.



Senna

Key to lettuce resistances

BL Bremia Lactucae or mildew Nr Aphid Nasonovia Ribisnigri LMV Lettuce Mosaic Virus IR Moderate or Intermediate Resistance

# Agricultural Division

With an impressive range of Cereals and Oilseed varieties included in the latest AHDB booklet, a strong position in the burgeoning Energy Crop sector and a market leading hybrid cereals development programme, Elsoms seeds and Saaten Union are now able to provide UK growers with an exciting range of new varieties.

## Who we are

### Adrian Hayler

Head of the Agricultural Division

Office: 01775 715028  
Mobile: 07826 937826  
Email: [adrian.hayler@elsoms.com](mailto:adrian.hayler@elsoms.com)



### Mark Nightingale

Oilseed Rape Breeder

Office: 01775 715010  
Mobile: 07710 950800  
Email: [mark.nightingale@elsoms.com](mailto:mark.nightingale@elsoms.com)



### Heather Oldfield

Agricultural Crop Manager

Office: 01775 715041  
Mobile: 07710 389207  
Email: [heather.oldfield@elsoms.com](mailto:heather.oldfield@elsoms.com)



### Stephen Smith

Wheat Breeder, Elsoms Wheat Ltd

Office: 01775 715009  
Mobile: 07831 430452  
Email: [stephen.smith@elsoms.com](mailto:stephen.smith@elsoms.com)



### Bob Miles

Agricultural Seed Consultant

Office: 01775 715024  
Mobile: 07710 950802  
Email: [bob.miles@elsoms.com](mailto:bob.miles@elsoms.com)



### Richard Jennaway

Technical Director, SAATEN UNION

Office: 01440 783440  
Mobile: 07770 756881  
Email: [jennaway1@saaten-union.co.uk](mailto:jennaway1@saaten-union.co.uk)



### Katie Baxter

Agricultural Coordinator

Office: 01775 715014  
Mobile: 07726 995107  
Email: [katie.baxter@elsoms.com](mailto:katie.baxter@elsoms.com)



## Portfolio

- + Winter & Spring Wheat
- + Winter & Spring Barley
- + Hybrid Wheat
- + Hybrid & Conventional Rye
- + Winter & Spring Triticale
- + Spring Oats
- + Durum & Spelt Wheat
- + Fodder Beet
- + Maize
- + Vining Peas
- + Catch and Cover Crops
- + Oilseed Rape
- + Linseed



# Catch and Cover Crops



SAATEN UNION are the market leaders in Europe for catch and cover crops and a leading specialist in biological control of nematodes and soil borne diseases. Since 2013 Elsoms have been working closely with SAATEN UNION to make their wealth of specialist varieties and information available to UK farmers and growers.

## High Powered Soil Improvers

Oil radish and black oat – Viterra INTENSIV mix



Excellent drainage

## Benefits of catch and cover cropping

### Soil nutrients

- + Improve the content and management of nutrients
- + Nutrient levels can be increased and released for the next crop

### Soil structure

- + Vigorous, extensive and deep rooting habits improve the structure and quality of the soil
- + Reduce compaction and allow freer movement of water and air through the soil

### Soil health

- + Reduce pests and diseases such as Rhizoctonia, beet cyst nematode, root lesion nematode etc
- + Prevent the build-up of diseases such as Take All and Club Root

### Water management

- + Reduce soil moisture loss
- + Water holding capacity can be considerably improved as a result of an increase in humus content that will improve the rate at which soil drains

### Reduced risk of soil erosion

- + Strong root structure and good ground cover can significantly reduce the risk of soil erosion

### Weed control

- + Suppress weeds and volunteers by smothering them with their dense canopies and vigorous growth
- + Companion cropping can reduce the requirement for herbicides

### Bees and insects

- + Plentiful source of late fodder for bees and other beneficial insects

### Biomass

- + Provide an increase of organic matter to the soil
- + Potential for biomass to be used as a feed for livestock and anaerobic digesters

### Greening

- + Help a grower comply with their EFA requirements
- + Please check cropping with your agronomist

# Catch and Cover Crops Decision Tree

Primary reason for growing catch and cover crops	Type of Crop	Variety / Mix	Seed Rate	Approx. Price Range	Description	Notes
<b>Improve soil health</b> <b>Combat soil born pests and diseases</b>	Multi resistant Oil Radish	<b>CONTRA</b>	25kg/ha	££	BCN Level 1 reduction and very effective against a wide range of pests and diseases – excellent effect on soil structure – will benefit a wide range of high value crops.	Long thin fibrous root structure delivers consistent high performance and is easily broken down – ideally needs 8 weeks to be fully effective – may survive winter – consider suitability if OSR in rotation.
	Black Oat	<b>PRATEX</b>	100-125kg/ha	£££	Impressive effect on free living nematodes – very popular with carrot and potato growers – rapidly establishing – high biomass yields – ideal mulch crop.	Very frost susceptible – ideal mulch crop – a cereal so greater flexibility in rotation.
	Black Oat / Oil Radish	<b>INTENSIV</b>	50kg/ha	£££	Ideal for intensive root crop rotations - proven and popular mixture in sugar beet and potato rotations.	Full seed rate needed if primary aim is to improve soil health.
<b>Improve soil structure</b>	Classic Oil Radish	<b>AKIRO</b>	18-25kg/ha	£	Rapidly establishing – deep rooted - great ground cover.	Will regrow if topped to 10-15cm – could use lower seed rate of 18kg/ha to reduce costs depending on circumstances.
	Multi resistant Oil Radish	<b>CONTRA</b>	18-25kg/ha	££	As above but benefits on soil health of multi resistant oil radish.	Expensive if multi resistance not needed – slower flowering than Akiro so can be left for longer – could use lower seed rate of 18kg as with Akiro if not targeting soil health.
	Black Oat / Oil Radish	<b>INTENSIV</b>	25-50kg/ha	££-£££	As above with added benefit of black oats.	Black oats provide excellent mulch crop potential – could use half seed rate if not targeting soil health.
<b>Rapidly establish ground cover</b> <b>Suppress weeds</b> <b>Reduce soil erosion</b>	Classic Mustard	<b>ALBATROS</b>	15-25kg/ha	£	Rapidly establishing – impressive ground cover – cheap.	Care required to not prejudice following crops in the rotation - crop has shortest life before requiring removal of those in the portfolio.
	Phacelia	<b>ANGELIA</b>	10-12kg/ha	££	Rapidly establishing – impressive ground cover – thinner stemmed variety to improve speed of breakdown.	<b>Ideal for OSR and brassica rotations</b> - excellent for promoting beneficial insects.
	Black Oat	<b>PRATEX</b>	50-125kg/ha	££-£££	Seed rate can be varied depending on circumstances. Rapidly establishing fast growing cereal with added soil health benefits.	Very susceptible to frost – ideal mulch crop -- <b>ideal for OSR rotations.</b>
	Forage Rye	<b>GENERATOR</b>	125-180kg/ha	££-£££	Winter hardy variety. Very rapidly establishing and fast growing crop producing a tall crop with an excellent biomass yield.	Primary use is for high biomass production.
	Black Oat / Phacelia / Clover	<b>UNIVERSAL</b>	25kg/ha	££	Combines the impressive ground cover of phacelia with the rapid establishment and high biomass of black oats with the soil fertility improvement qualities of clover.	An excellent mixture – simple and effective – <b>ideal for OSR rotations.</b>
	Black Oat / Oil Radish	<b>INTENSIV</b>	25-50kg/ha	££-£££	Ideal for intensive root crop rotations - proven and popular mixture in sugar beet and potato rotations.	Black oats provide excellent mulch crop potential – could use half seed rate if not targeting soil health.
	Winter Rye / Vetch	<b>WICKROGGEN</b>	50-100kg/ha	££-£££	Winter hardy whole crop mixture with added solid fertility benefits of vetch.	Ideal for autumn/ winter ground cover to be incorporated in early spring – alternatively grow through to full whole crop harvest in early summer.
	Classic Oil Radish	<b>AKIRO</b>	18-25kg/ha	£	Rapidly establishing – deep rooted – great ground cover.	Simple and effective – <b>ideal for following maize.</b>
<b>High biomass production</b> <b>(Animal feed or energy production)</b>	Forage Rye	<b>GENERATOR</b>	125-180kg/ha	££-£££	Very rapidly establishing and fast growing crop producing a tall crop with an excellent biomass yield.	Winter hardy variety – harvest early summer.
	Black Oat	<b>PRATEX</b>	50-125kg/ha	££-£££	Seed rate can be varied depending on circumstances. Rapidly establishing fast growing cereal with added soil health benefits.	Can be planted late summer / early autumn and used as a mulch crop in rotations.
	Winter Rye / Vetch	<b>WICKROGGEN</b>	50-100kg/ha	££-£££	Winter hardy whole crop mixture with added solid fertility benefits of vetch.	Ideal for autumn/ winter ground cover to be incorporated in early spring - alternatively grow through to full whole crop harvest in early summer.



# Seed Treatments

Vegetable seeds are generally treated with fungicides, usually as a film coating to protect from soil borne fungal diseases and aid establishment.

## Film coating

Species/Crop	Product name	Active ingredients	Target pest and/or disease
Basil	Apron XL®	Metalaxyl-M	Damping off diseases
Beetroot	Apron XL®	Metalaxyl-M	Damping off diseases
	Maxim 480FS®	Fludioxonil	Alternaria (SPP)
	Wakil XL®	Fludioxonil, Metalaxyl-M, Cymoxanil	Damping off diseases
Baby leaf	Apron XL®	Metalaxyl-M	Damping off diseases
	Maxim 480FS®	Fludioxonil	Damping off diseases
	Force ST®	Tefluthrin	Bean seed fly
Brassica selected (SPP)	Agrichem Flowable Thiram®	Thiram	Damping off diseases
	Apron XL®	Metalaxyl-M	Damping off diseases
	Maxim 480FS®	Fludioxonil	Black leg
	Mundial®	Fipronil	Cabbage root fly
	Rovral®	Iprodione	Alternaria (SPP)
Bulb Onion	Agrichem Flowable Thiram®	Thiram	Damping off diseases
	Apron XL® (FarMore 200)	Metalaxyl-M	Damping off diseases
	Maxim 480FS® (FarMore 200)	Fludioxonil	Damping off diseases, neck rot
	Force ST®	Tefluthrin	Bean seed fly & onion fly
Broad Beans & Peas	Agrichem Flowable Thiram®	Thiram	Damping off diseases
	Wakil XL®	Fludioxonil, Metalaxyl-M, Cymoxanil	Downy mildew
Carrot	Cruiser 70WS®	Thiamethoxam	Willow - carrot aphid
	Force ST®	Tefluthrin	1st generation carrot fly
	Maxim 480FS®	Fludioxonil	Alternaria (SPP)
	Wakil XL®	Metalaxyl-M	Damping off diseases
Chicory (rooted)	Force ST®	Tefluthrin	Wireworm
Coriander	Apron XL®	Metalaxyl-M	Damping off diseases
	Force ST®	Tefluthrin	Bean seed fly
Dill	Apron®	Metalaxyl-M	Damping off diseases
	Force ST®	Tefluthrin	Bean seed fly
Leek	Agrichem Flowable Thiram®	Thiram	Damping off diseases
	Force ST®	Tefluthrin	Bean seed fly

## Film coating

Species/Crop	Product name	Active ingredients	Target pest and/or disease
Lettuce & Endive	Cruiser 70WS®	Thiamethoxam	Aphids
Parsley	Apron XL®	Metalaxyl-M	Damping off diseases
	Force ST®	Tefluthrin	Bean seed fly
Fennel & Parsley	Maxim 480FS®	Fludioxonil	Leaf spot, Alternaria (SPP)
Parsnip	Force ST®	Tefluthrin	Carrot, soil pests
	Maxim 480FS®	Fludioxonil	Alternaria (SPP)
	Wakil XL®	Fludioxonil, Metalaxyl-M, Cymoxanil	Damping off diseases
Radish	Apron XL®	Metalaxyl-M	Damping off diseases
	Agrichem Flowable Thiram®	Thiram	Damping off diseases
Salad Onion	Agrichem Flowable Thiram®	Thiram	Damping off diseases
	Gizmo™	Tebuconazole	White rot
	Force ST®	Tefluthrin	Bean seed fly & onion fly
Shallots	Agrichem Flowable Thiram®	Thiram	Damping off diseases
	Apron XL® (FarMore 200)	Metalaxyl-M	Damping off diseases
	Force ST®	Tefluthrin	Bean seed fly & onion fly
	Maxim 480FS® (FarMore 200)	Fludioxonil	Damping off diseases, neck rot
Spinach	Apron XL®	Metalaxyl-M	Damping off diseases
	Force ST®	Tefluthrin	Bean seed fly
	Maxim 480FS®	Fludioxonil	Anthracoze
Swede	Agrichem Flowable Thiram®	Thiram	Damping off diseases
	Cruiser SB®	Thiamethoxam	Flea beetles & aphids
Turnip	Agrichem Flowable Thiram®	Thiram	Damping off diseases
Wild Rocket	Apron XL®	Metalaxyl-M	Damping off diseases
	Force ST®	Tefluthrin	Bean seed fly
Kale	Cruiser SB®	Thiamethoxam	Flea beetles & aphids

Agrichem Flowable Thiram® is a registered trademark product of Agrichem (International) Ltd.

Apron XL®, Cruiser SB®, Cruiser 70 WS, Maxim 480FS®, Force ST®, Wakil XL® are registered trademark products of Syngenta UK Ltd.

Gizmo™ is a registered trademark product of Nufarm UK Ltd.

Mundial® is a registered trademark product of BASF, applied in Europe.

## Pelleting/Encrustments

Species/Crop	Product	Product form	Use
Bulb Onion	Splitkote Light 3.5®	Pellet/pill	For precision field drilling
Carrot	OnX®	Micro pellet/encrustment	For precision field drilling
	Splitkote 2.5®	Pellet/pill	For precision field drilling
Celery	Pills	Pellet/pill	For indoor sowing in blocks
Fennel (florence)	Pills	Pellet/pill	For indoor sowing in blocks
Leek	Pills	Pellet/pill	For precision field drilling
Lettuce	Pills	Pellet/pill	For indoor sowing in blocks
Parsnip	Topkote®	Micro pellet/encrustment	For precision field drilling
Radicchio	Pills	Pellet/pill	For indoor sowing in blocks
Salad Onion	OnX®	Micro pellet/encrustment	For precision field drilling

OnX®, Splitkote®, Splitkote Light 3.5®, Topkote® are registered trademarks of Incotec Europe BV.

## Priming

Species/Crop
Bulb Onion
Carrot
Leek
Parsley
Parsnip
Salad Onion
Shallots
Others on request

## Seed Treatment Contacts

**Rae Cook**  
Head of Seed Treatment  
m 07860 181195  
e rae.cook@elsoms.com

**Kim Baker**  
Seed Treatment Logistics Manager  
m 07710 389204  
e kim.baker@elsoms.com

**Audrone Viletaite**  
Seed Treatment Sales Coordinator  
e audrone.viletaite@elsoms.com

**Phillip Ayres**  
Technical Sales Manager, Seed Treatment  
m 07881 335816  
e phillip.ayres@elsoms.com

# Product Specification

Vegetable growing has become a highly specialised and intensive activity. As a result of the ever increasing demand for better quality, vegetable growers and plant raisers require an improved quality of the basic material.

The demand for specific seed forms and more information about seed quality has strongly increased to better influence emergence and required number of plants.

Seed is a natural product. The often varying environmental conditions thus influence final results. It is therefore often not possible to give detailed information about emergence and other physical seed characteristics. To meet the wishes of clients as much as possible, Elsoms has made up quality standards for the various seed categories.

The germination percentages mentioned are Elsoms minimum required figures and made according to ISTA methods and tolerances. Please see the table on the next page for our seed quality specifications.

## ESA Product specifications

These product specifications for germination of precision seeds, varietal purity of precision seeds and seed health requirements are based upon ESA recommended standards.

These product specifications are not meant to be absolute minimum standards for delivery. If the quality tests of Elsoms indicate a lower quality level than given in these specifications, Elsoms will inform perspective seed users. This communication is aimed at informing professional seed users about the quality they can expect, so they can make their own assessment and decide if these seeds meet their requirements.



## General definitions

### Germination

Germination tests relate to ISTA procedures and are valid at the time of dispatch. We test seed before and after treatment and germination checks are carried out according to ISTA test methods and guidelines by our qualified analysts.

### + Normal seed

In general, normal seed has not been subjected to special processes. It is sold by weight and/or by count depending on the product. Normal seed complies with EC Standards.

### + Precision seed

Precision seed has been subjected to additional processes. It has a uniform size and high germination. Precision seed is sold by count.

## Reaction of plants to pests or pathogens

According to: International Seed Federation (ISF), Section Vegetables. (Adopted 28.05.04 Berlin)

### + A Immunity

Not subject to attack or infection by a specified pest or pathogen.

### + B Resistance

The ability of a plant variety to restrict the growth and development of a specified pest or pathogen and/or the damage they cause when compared to susceptible plant varieties under similar environmental conditions and pest or pathogen pressure.

Resistant varieties may exhibit some disease symptoms or damage under heavy pest or pathogen pressure. Two levels of resistance are defined.

High/standard resistance (HR): plant varieties that highly restrict the growth and development of the specified pest or pathogen under normal pest or pathogen pressure when compared to susceptible varieties. These plant varieties may, however, exhibit some symptoms or damage under heavy pest or pathogen pressure.

Moderate/intermediate resistance (IR): plant varieties that restrict the growth and development of the specified pest or pathogen, but may exhibit a greater range of symptoms or damage compared to resistant plant varieties.

Moderately/intermediately resistant plant varieties will still show less severe symptoms or damage than susceptible plant varieties when grown under similar environmental conditions and/or pest or pathogen pressure. (These standard abbreviations HR (high/standard resistance) and IR (moderate/intermediate resistance) are used throughout the text).

### + C Susceptibility

The inability of a plant variety to restrict the growth and development of a specified pest or pathogen.

## Seed quality specifications

Crop	Product	Grade	Usual seed size (mm)	TSW* (grams)	Min. germination of precision seed
Asparagus	Seed		2.5-4.25	20	85%
Broad bean	Seed			1100-1600	85%
Climbing bean	Seed			250-300	95%
Dwarf French bean	Seed			250-300	85%
Runner bean	Seed		10-25	1000	
Beetroot	Graded		3.0-3.5	10	80%
			3.5-4.0	14.5	80%
			4.0-4.5	20	80%
Borecole, cabbage	Normal Seed (where available)	To 0.5mm	1.25-2.5	3.5	
Brussels sprouts, cauliflower, sprouting broccoli	Precision	To 0.2/0.25mm	2.0-2.25	5.2	90%
Carrot	Film coat	To 0.2/0.25mm	<1.6	1.17	85%
			1.6-1.8	1.42	85%
			>1.8	1.82	85%
	Splitkote®	To 0.5mm			
Celery	Precision			0.4	90% including pellets
Florence fennel	Precision	To 0.2/0.25mm		4	90% – pellets
Leek – Hybrid varieties	Film coat	To 0.25mm			90%
	Pills	To 0.75mm	3.0-3.75	35	90%
Leek – O.P varieties	Film coat	To 0.25mm			85%
	Pills	To 0.75mm	3.0-3.75	35	85%
Lettuce	Pills	To 0.5mm	3.0-3.5	40	95%
Marrow / Courgette	Seed			145	
Onion (salad)	Film coat OnX®	1.75-2.25mm	2.25-2.75	4	90%
				8.3	90%
Onion (bulb)	Film coat Splitkote® Light	To 0.75mm	2.0-2.75	4	90%
			2.75-3.5	25	
Parsley	Seed	To 0.2/0.25mm			87%
Parsnip	Film coat	To 0.25mm	4.25-4.50	4.8	
			4.50-4.75	5.3	
			4.75-5.00	5.9	
	Topkote®			18.5	
Pea	Seed		6-9	285	85%-88%
Radish	Film coat	To 0.5mm		1	92%
Radicchio	Normal Seed			1.75	88%
	Pills			35	88%
Spinach	Film coat			12	85%
Swede	Film coat	To 0.2/0.25mm	1.50-2.50	3.3	
Sugar pea	Seed			285	

**Key** ® registered trademark of INCOTEC International B.V. Average TSCO may vary between lots.

# Production Guide

Crop	Product season	Normal sowing time	Normal cropping time	Market	Standard row width (inches)	Direct drilling seed spacing (inches)	Approx no. seeds drilled/acre	Standard row width (inches)	Plant spacing within row (inches)	Plant population / acre
Asparagus	Spring to early Summer modules / blocks	Feb	Apr to 20th Jun, 2 years from planting	Fresh/Pre pack				54	12	10,000
Broad bean	O/E	Nov to Dec	May to Jun	Fresh	18	6	58,000			
	Early	Mid Feb	Jun							
	Maincrop	Apr	Jul							
Climbing flat and climbing French bean	Early Glasshouse Crop	Mid Jan (South) to Mid Feb (North)	Jun to Jul	Fresh	48	15 2 seeds per station	17,500	48	15 2 Seeds per station	17,500
Beet	Early Glasshouse	Jan	May	Fresh Bunching	15	1.5	280,000			
	Outdoor (poly cover)	Mid Mar	Jun	Fresh Bunching	15	1.5	280,000			
	Outdoor (uncovered)	End Mar	End Jun	Fresh/Early Pickling	15	1.25	340,000			
	Maincrop	Apr to Jul	Jul to Oct	Pickling/Fresh	15 twinline (16 seeds/ft run)	1.5	550,000			
Beet, leaf	Summer/Autumn	Mar to Jun	Jul to Nov	Fresh	18	4	87,120			
Borecole	Summer/Autumn	Modules Apr to Jul**	Jul to Feb	Fresh/Pre pack						13,000
Brussels sprout	Early	Feb	Aug to Sept	Fresh				24	15	12,500
	Maincrop	Mar	Oct to Mar	Fresh				24	15	12,500
Chinese cabbage	Early	Mar to Apr	Jun to Jul	Fresh				15	15	28,000
	Maincrop	Early May End Jul	Jul to Nov	Fresh				15	15	28,000
Pointed cabbage		Feb to Jul	May to Nov	Fresh				18	12	24,000
Cabbage	Summer/Autumn	Early Feb to Mid May	Early Jun to mid Oct	Fresh				16-20	16-20	24,600-15,000
White cabbage	Transplanted**	Early Mar to early May	End Sept to Nov	Process				20		10,000
Industrial cabbage	Transplanted**	Mid Feb to Mid Apr	End Jul to Nov	Process				24-28	24-28	11,500-8,000
Red cabbage	Transplanted**	Early Mar to Mid Apr	Aug to Nov	Fresh/ Process				20 20	16 20	20,000 15,600
Spring cabbage	Hearted	Aug	Mar to May	Pre pack/ Fresh	15-18	5-10	80,000-35,500	15-18	10 10	43,000 35,000
	Greens Aut/Win/Spr	Jul/Aug	Oct to Apr	Pre pack/ Fresh	12-18	5	100,000-70,000	12-18	10 10	60,000 35,000
Savoy cabbage	Transplanted** E/M	Early Mar	Jul to Oct	Fresh				20	16	18,000
	Late	Early May	Oct to Mar	Fresh				20	20	15,600
Broccoli	M	February to Mid Jul	Jul to Nov	Fresh Floretting				24	16	16,000
Carrot	Early	End Oct to Jan (poly)	Early to mid Jun	Bunching/ Fresh	18	1.25-0.9	250,000-350,000			
	2nd E	Early Feb under poly	Mid Jun to late Jul	Fresh	18	0.8	400,000			
	Maincrop	Apr to Mid Jun	Aug onwards	Fresh	18	0.5-0.4	600,000-800,000			
	Chantenay	Mid Feb to end Jun	Jul onwards	Fresh	9 rows in 10" bands. 3 triple rows in tandem		3,500,000			

Crop	Product season	Normal sowing time	Normal cropping time	Market	Standard row width (inches)	Direct drilling seed spacing (inches)	Approx no. seeds drilled/acre	Standard row width (inches)	Plant spacing within row (inches)	Plant population / acre
Cauliflower	Transplant**	Mid Oct	Late May					24	18	13,500
	Early Summer	Mid Jan – Early Feb	Late Jun					20	20	13,500
	Summer/Autumn	Mid Feb to Jun	Jul to Nov					24	16	13,500
	Winter	May-Early Jun	Dec to Jun	Fresh				24-30	20-28	13,000-7,500
Celeriac	Transplant** Maincrop	Mar	Oct/Nov	Fresh/ Processing				15	18	19,800-27,000
Celery	Early Transplant**	HG Dec	End May Jul to Dec	Fresh				10 15	10 12	60,000 35,000
	Maincrop	Early May								
Courgette	Indoor E	HG Mar	Mid/end May	Fresh				48	30	4,350
	Outdoor E Protected	End Apr	Early to Mid Jun	Fresh	2 seeds per station	30	11,500*	36	30	5,750
	Maincrop	Mid May to End Jun	Jun to Sept	Fresh			11,500*	36	30	5,750
Fennel, Florence	Summer and Autumn	Apr to Jul	Jun to Oct	Fresh	18	4*	37,000	18	12	29,000-31,000
Kohl rabi	Maincrop	Early Feb	Late May	Fresh	15	4	100,000	Transplant**15	9	44.7
		Mid Jul	Mid Oct							
Leek	Maincrop	Mar to May	Sept to Mar	Pre pack/ Fresh	18 18	1.5 2.5	230,000 140,000	18 18	3 6	115,000 58,000
Lettuce Indoor	Short Day	20 Aug to 1 Jan	End Oct/ End Apr	Fresh				8	9	85,000
	Long Day	1 Jan to 20 Aug	End Apr/ End Oct	Fresh				8	8	95,000
Lettuce Outdoor	Drilled Spring to Autumn	End Mar/ Mid Jul	End Jun/ End Oct	Fresh	12	6	85,000	12	12	42,500
	Transplanted** under polythene	End Dec	Early May	Fresh				12	12	42,500
	Outdoor	End Mar to Mid Aug	Mid Jun to End Oct	Fresh				12	12	42,500
Marrow	E Indoor	Feb to Mar	Early Jun	Fresh						
	E Protected M	Details as for Courgettes								
Bulb onion	Maincrop	Direct drill Feb to Mar	Late Aug/Sept		9 to 14		250,000–220,000			200,000-170,000
	Overwintered	Mid Aug	Jun/Jul		9 to 14		290,000–250,000			
Bulb onion sets		Oct	Jul		18		165,000			
		Jan to Mar	Aug to Sept							
Salad onion	Spring	Feb to Jun	Jun to Nov		14.4	38 seeds/ft	1,380,000			1,100,000
	Overwintered	Jul to Sept	Dec to Apr		14.4	40 seeds/ft	1,450,000			1,180,000
	Japanese				14.4	40 seeds/ft	1,450,000			1,180,000
Shallots		Direct Drill Feb to Apr	End Jul to End Aug		14.4	25 seeds/ft	900,000			
Parsley	E/M/L	Feb to Jul	Jun until frost	Fresh/ Processing	18	1	350,000	18	6	350,000-580,000
Parsnip	Summer/ Winter	Jan to May	Jul to Apr	Fresh 18" twin		3.25/4.0	under poly 150-180,000			
				Pre pack 18" twin		3.25/4.0	open ground 170-220,000			
Pea	VE	Nov to Feb	Early May	Fresh	8	2	392,000			
	E	Feb to Mar	Jun	Fresh	8	1.5	522,000			

Crop	Product season	Normal sowing time	Normal cropping time	Market	Standard row width (inches)	Direct drilling seed spacing (inches)	Approx no. seeds drilled/acre	Standard row width (inches)	Plant spacing within row (inches)	Plant population /acre
Sugar pea	Summer	Mar to Jun	May to Sept	Fresh	8	1.5	522,000			
Radicchio	Spring/ Summer	Mar to Jul	Jun to Feb	Fresh/ Processing				12	12	43,560
	Autumn									
	Transplant**									
Radish	Outdoor spring to suturem	Feb to Sept	Apr to Nov	Fresh	8	2	392,000			
	Indoor all year round			Fresh	4	1.5	1,045,000			
Spinach	Spring/ Summer/ Autumn	Early Mar to Aug	Mid May to End Nov		12	1	522,720			
	Early spring (over wintering crop)	Sept to Oct	Apr to May	Fresh	12	3	130,680			
Sprouting broccoli	Maincrop	Late Jan to Late Jun	Feb to Nov	Fresh				24	18	14,500
Swede		Apr to Jun	Jul to Mar	Fresh	18	6	60,000			

## Useful formulae & key

This guide has been compiled to provide growers with a basis for formulating their own production programmes. All growing seasons are considerably affected by light, temperature, rainfall etc. and all information given here is for guidance only.

All areas and drilling/planting distances are in imperial units – for conversion see table. For module raised crops the quantity of seed required is the number of plants per acre multiplied by 100 and divided by the laboratory germination. Then add 5% for plant raising losses.

**Acres x 0.4047** = Hectares  
**Hectares x 2.471** = Acres  
**Square feet x 0.0929** = Square metres  
**Square centimetres x 0.155** = Square inches  
**Square inches x 6.452** = Square centimetres  
**Centimetres x 0.3937** = Inches  
**Inches x 2.54** = Centimetres

**\*** Chop out to correct plant spacing  
**\*\*** Propagated under glass and transplanted  
**CG** Glasshouse grown, without heat  
**HG** Glasshouse grown, heat assisted  
**L** Late  
**O** Overwintered  
**M** Maincrop  
**VE** Very Early  
**E** Early  
**HO** For more detailed information, please contact Head Office or your local Regional Vegetable Seed Specialists.

## Any questions?

01775 715000

seed@elsoms.com

# Terms and Conditions

Effective from 1st April 2016.

## Definitions

*In these Terms:*

**"Buyer"** means the person who accepts Elsoms quotation for the sale of goods or whose order for goods is accepted by Elsoms.

**"Contract"** means the contract for the sale and purchase of goods.

**"Elsoms"** means Elsoms Seeds Ltd of Pinchbeck Road Spalding Lincolnshire PE11 1QG.

**"Terms"** means the standard terms and conditions of sale as set out in this document and (unless the context otherwise requires) includes any special terms agreed in writing between the Buyer and Elsoms.

## Jurisdiction

Unless otherwise specifically agreed in writing English law shall govern the construction of the Terms and any dispute which may arise in relation to them.

## Prices

These prices have been based on the latest costs at time of going to press and offers are subject to out-turn of our or our suppliers crops and/or being unsold and without engagements. Prices are for net weights, bags free and non-returnable unless otherwise stated. All prices quoted by letter or verbally by Head Office personnel or our authorised representatives are subject to alteration without notice. We also reserve the right to alter prices by reason of the imposition of or alteration of any tax, duty, levy or other statutory or E.U. charge at the point of application in accordance with the regulations relating to the aforementioned charges.

## Fluctuations in the £

If the goods which are the subject matter of this offer are of foreign origin we reserve the right to adjust the price payable by you so as to reflect any alteration in the value of the £ sterling in terms of currency of the country of origin of the goods between the date of sale and the date of invoice.

## Carriage

The prices are, unless otherwise stated, inclusive of packing and delivery, carriage paid home in England, Scotland, Wales or f.o.b. English ports. Special delivery e.g. 1st CLASS POST etc. will be charged to the Buyer.

## Substitutions

If we are unable to supply the variety or treatment ordered we will usually send the nearest available, unless instructed to the contrary.

## Our information

All information whether contained in our literature or given by our staff is for general guidance only. Variation in local or climatic conditions can render such information inaccurate. Buyers are therefore advised that any such information given to them does not constitute a representation by us as to these matters and should not be relied on as such. Buyers should satisfy themselves that any seeds which they order are of a variety and performance satisfactory for their requirements and order such seeds at their own risk.

## Seed quality

Seeds sold by us are guaranteed to comply at the time of delivery with the UK Seeds Regulations currently in force. All germination figures quoted are laboratory tests as defined by the OSTS and/or E.U. Regulations and are not the figures that can be expected to grow in the field. If certificates of conformity are required, please request these at time of ordering.

## Intellectual property rights/reproduction of seed

All intellectual property rights are reserved. With the exception of our multiplication grades of seed which are sold for reproduction, all other seeds are offered and sold for the production of consumer crops only and not for reproduction of seed. Unauthorised reproduction and/or exploitation is forbidden. Violation of our or our suppliers' intellectual property rights may constitute a serious offence (for further info see www.aib-seeds.com).

## Latent defect

Disease of plants can be transmitted by the wind, by insect, by animals or by human agencies and may be seed borne or soil borne. We believe the seed hereby sold to be free from latent defect, but it is not a condition of sale nor do we warrant that any seed sold by us shall be free from such defect and we will not be responsible in any way for the resultant crop.

## Buyer specified untreated seed

If a Buyer specifically requests that seed should not have a chemical treatment where this is normally offered or advised in our Catalogue or Guide then we accept no liability for any damage, direct or consequential, which may result therefrom.

## Seed treatment at Buyer's request

Where at the Buyer's request any treatment whether chemical or otherwise is applied to the seed, Elsoms accepts no responsibility for the effectiveness of such treatment or any damage direct or consequential which may result therefrom.

Buyers may request that seed is treated in accordance with a specific off-label approval (SOLA) or Extension of Authorisation for Minor Use (EAMU) (this is strictly at the discretion of Elsoms). SOLAs and EAMUs are uses for which approval has been sought by individuals or organisations other than the manufacturers. The Notices of Approval are published by FERA and are widely available from AHDB and/or HDC offices. Buyers must first obtain a copy of the relevant Notice of Approval and comply strictly with the conditions laid down therein. Although approved, off-label and EAMU uses are not endorsed by manufacturers and such treatments are made entirely at the risk of the Buyer.

## Damage, delay or loss in transit

Please advise us immediately and, on receipt of goods, inspect carefully. If there is any sign of damage, sign "Damaged in Transit" and indicate then that a claim will be made.

In the case of goods actually delivered damaged, Elsoms must notify the carrier within 10 days of delivery. Buyers are, therefore, requested to notify immediately by phone of any case of goods received damaged and confirm by return first class mail so that the necessary claim can be made. In cases of non-arrival of goods, within fourteen days of despatch, advise the Carriers and us. This gives us the time to lodge a complaint within the time limit of 28 days.

## Force majeure

Should the fulfilment of any Contract or order be prevented or delayed by Act of God, action by any Government, blockade, revolution, prohibition of export or import, riot, civil commotion, strikes, lockouts, force majeure, failure of crops, breakdown of machinery, power failure, fuel shortage, loss and/or detention at sea or any other contingency beyond our control, we will not be responsible for any loss and/or damage occasioned thereby. Should any of the goods be rendered unfit for delivery by reason of any of the above acts the Contract so far as it relates to those goods shall be deemed to be cancelled.

## Delivery

Each delivery or consignment shall stand as a separate contract.

## Payment

Cheques should be made payable to ELSOMS SEEDS LTD. and crossed/& Co./ . Bank transfers can be made to the Elsoms bank account shown on the invoice. After 28 days all accounts are due at full invoice price. Interest will be charged on overdue accounts at a rate of 1.25% per month calculated on the outstanding balance. All accounts are payable at Spalding, Lincs. We reserve the right to require payment at any time and the goods are sold subject to this express condition.

## Non-payment

Elsoms reserve the right to withhold deliveries until all and any outstanding payments due from the Buyer under any Contract with us have been received and reserve a lien upon - and the right to sell or otherwise dispose of - all goods the subject of any Contract whether appropriated to it or not in respect of any such payments.

## Ownership and risk

(a) Until paid for in full, all goods supplied by Elsoms, remain Elsoms property.  
(b) Risk passes to the Buyer on delivery of the goods. Conditions regarding ownership and risk do not affect Elsoms contractual rights and all goods supplied must be paid for in accordance with the contract.

## Insolvency

(i) If the Buyer:

- (a) Has a Receiver or Liquidator appointed to any of its property or business undertaking; or
  - (b) Announces that he is ceasing to Trade (other than for declared legitimate reasons such as retirement, whilst continuing to honour all existing contracts); or
  - (c) Fails to make a payment as due, suspends payment and/or notifies any of his creditors that he is unable to meet debts or that he is about to suspend payment of his debts; or
  - (d) Convenes, calls or holds a meeting of creditors; or
  - (e) Being an individual or a firm becomes bankrupt or makes any composition or scheme of arrangement with his creditors; or
  - (f) Being a body corporate convenes, calls or holds a meeting for the purpose of going into liquidation (other than for the purpose of reconstruction or amalgamation) by the making of an order or the passing of a resolution for winding-up or becomes subject to an administration order; or
  - (g) The other party being a partnership - any of the above events occurs with respect to the partnership or to any partner therein;
- then:

- notwithstanding any previous arrangement with Elsoms for deferred payments, the full or full remaining price for any goods delivered by Elsoms shall become immediately due to it; and Elsoms shall have the right without prejudice to any other rights and remedies available to it, to cancel and/or suspend or to refuse to accept any further deliveries and/or to terminate the Contract at any time after becoming aware of any of the above circumstances providing that

- when exercising any of the above rights, Elsoms shall inform the Buyer of its intention to exercise such rights in writing within 28 days after the relevant occurrence.

(ii) Whenever any of these rights are exercised by Elsoms, Elsoms will not be liable to pay any compensation to the Buyer.

## Complaints

No complaint under the Terms can be considered unless clear proof can be given that the seed grown and alleged to have performed unsatisfactorily was in fact the seed supplied by us and that it was sown on suitably prepared ground treated carefully and correctly throughout and subject only to such conditions as were likely to produce a favourable crop.

## Arbitration

Any dispute under this Contract shall be referred to arbitration in accordance with the arbitration rules of the British Society of Plant Breeders Ltd, current at the date of the referral, which have been drawn up in consultation with and approved by the National Farmers' Union of England and Wales, the National Farmer's Union of Scotland and the Ulster Farmers' Union. All parties shall in making this Contract be deemed to have knowledge of such rules and to have elected to be bound thereby.

Copies of the arbitration rules can be obtained from British Society of Plant Breeders Ltd, BSPB House, 114 Lancaster Way Business Park, Ely, Cambridgeshire, CB6 3NX or can be seen on our website.

## Acceptance of terms

The giving or sending of an order to us constitutes an acceptance of the Terms by the Buyer who, if he/she does not accept the Terms must return the goods forthwith.

## Limitation of liability

In the event of any goods supplied by us not complying with the terms of the Contract or of any goods proving defective (whether as regards purity or germination or otherwise) we will at our option replace the goods free of charge to the Buyer or will refund all payments made to us by the Buyer in respect of the defective goods and this will be the limit and the sole extent of our obligation. Save as set out in this clause above we hereby exclude all liability whatsoever (whether based on negligence by us or our employees, suppliers, sub-contractors or agents or otherwise) for any loss expense or damage whether direct or consequential arising in any way whatsoever in connection with any goods supplied by us whether due to any failure in the performance of or any defect in any such goods or otherwise howsoever. In accordance with the established custom of the seed and horticultural trade any express or implied condition statement or warranty statutory or otherwise whatsoever not expressly stated in the Terms is excluded. The price of all goods sold by us is based upon the foregoing limitations upon our liability and would be much greater if a more extensive liability were required to be undertaken by us. In accepting the goods upon these conditions the Buyer acknowledges that the limitation of Elsoms liability is fair and reasonable.

## General

If any provision of the Terms is held by a Court or other competent authority to be invalid or unenforceable in whole or in part the validity of the other provisions of the Terms and the remainder of the provision in question shall not be affected.

## Contracts (Rights of Third Parties) Act 1999

The parties acknowledge that it is not their intention that any third party shall be entitled to enforce any term of the Contract which may confer a benefit on that third party whether any such entitlement would, but for this provision, arise under the Contracts (Rights of Third Parties) Act 1999 or otherwise.

