

SEA-invest





SEA-invest

SEA-invest is a leading stevedoring company in Western Europe and Africa. The privately owned SEA-invest group is present in Belgium, France, the Netherlands, Germany, Poland, Ivory Coast, Senegal and South Africa.

FOR MORE DETAILS
PLEASE VISIT
WWW.SEA-INVEST.COM

During the last decades, port handling services have been extended by a wide range of value added services, for which SEA-invest invested in purpose-built installations, tailored to its customers' requirements.

The activities of SEA-invest can be divided into 8 divisions:

- ▶ Dry bulk
- ▶ Liquid products
- ▶ Fruit & food
- ▶ Break bulk, containers & RoRo
- ▶ Logistics & warehousing
- ▶ Freight forwarding & customs brokerage services
- ▶ Shipping & agencies
- ▶ Services

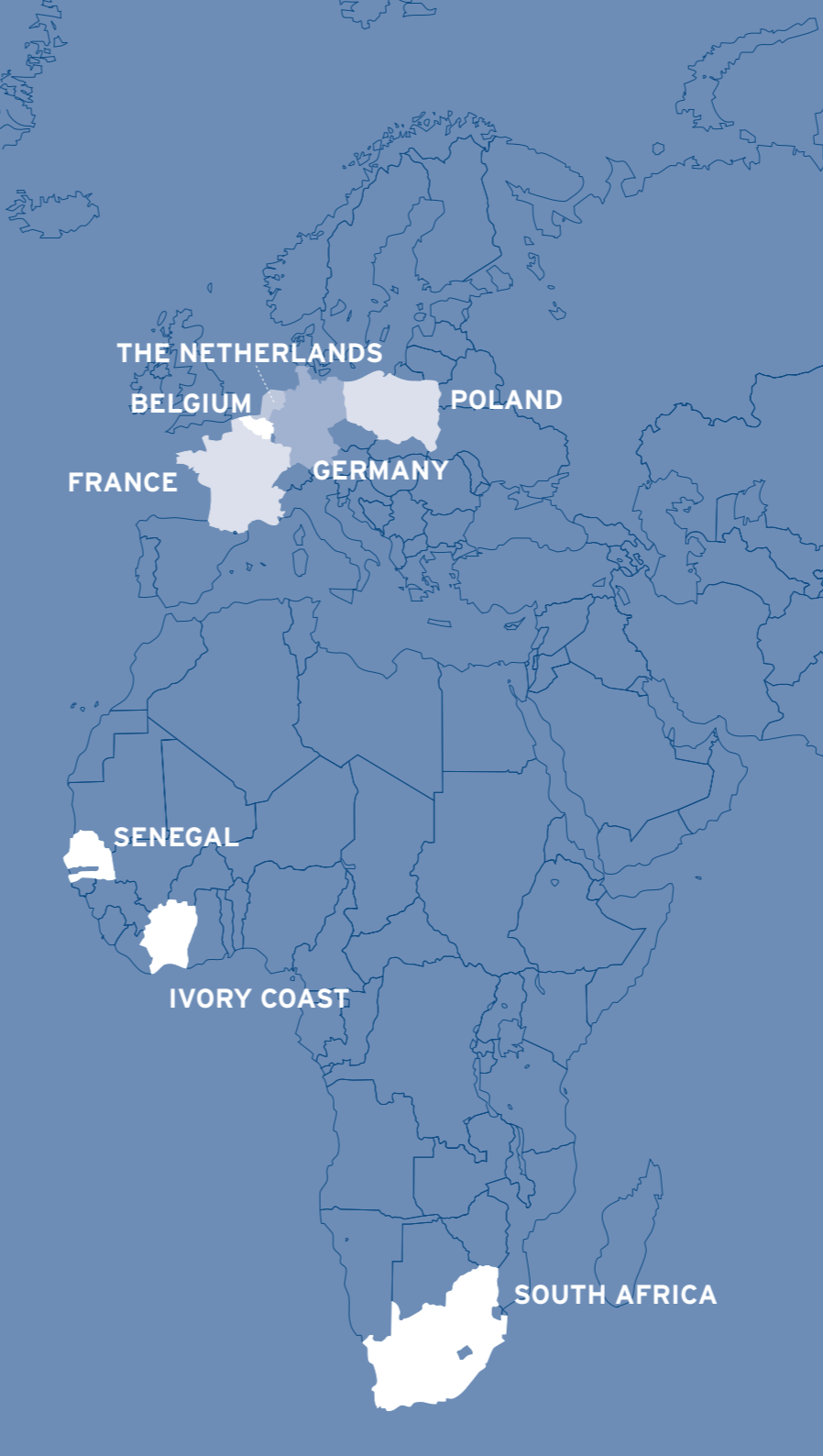
KEY FIGURES OF THE SEA-INVEST GROUP

ANNUAL TONNAGE TURNOVER: MORE THAN 100 MILLION TONS

5.500 EMPLOYEES

ACTIVE IN 25 PORTS IN 8 COUNTRIES

800HA OF LAND IN VARIOUS PORTS



DRY BULK ANTWERP



Antwerp Bulk Terminal, Delwaide Dock

ANTWERP BULK TERMINAL, DELWAIDE DOCK

80 ha

1,8 km total quay length

2 cranes of 50t lifting capacity

Draft: Capesize vessels, 15,56 m FW

Solid fuels and ores

Screening

6TH HARBOUR DOCK

17 ha

1,2 km total quay length

3 cranes of 40t lifting capacity

Draft: 13,30 m FW

Industrial minerals, break bulk, agribulk, biomass

60.000 m² covered storage / 16.500 m³ tank storage

Packaging, screening, crushing



Antwerp Bulk Terminal, 6th Harbour Dock

DRY BULK ANTWERP



Antwerp Bulk Terminal, Amerika Dock

LEOPOLD DOCK

12 ha

1,2 km total quay length

3 cranes of 40t and 1 crane of 50t lifting capacity

Draft: 13,5 m FW

Non-ferrous concentrates, ores, break bulk, industrial minerals

60.000 m² covered storage

AMERIKA DOCK

4,5 ha

400 m total quay length

Draft: 11,5 m FW

Ores, break bulk, industrial minerals, biomass

23.000 m² covered storage.



Antwerp Bulk Terminal, Leopold Dock

DRY BULK GHENT



Coal drying installation

GHENT COAL TERMINAL

85 ha

700 m total quay length

Draft: 12,50 m FW

Coal, petcoke, biomass

Screening / crushing / washing / drying / blending

2 shore cranes of 25t lifting capacity

Covered storage

- ▶ 2 warehouses of 6.500 m² each
- ▶ Biomass warehouse of 32.500 m²
- ▶ 2 metallic silos of 6.700m³ each



Screening installation



DRY BULK GHENT



Ensagent



CBM



CBM

ENSAGENT

28.650 m ²
draft: 12,25 m FW
Products ► Calcined petcokes ► Cement in bulk
Activities ► Calcined petcokes: crushing, screening, bagging ► Cement: storage
Silo capacity for the storage of cement of 5.400m ³
2 warehouses of 5.670m ² for the storage of calcined petcokes



CBM

CBM (COMPAGNIE BELGE DE MANUTENTION)

91 ha
6 km total quay length
Draft: 12,25 m/12,50 m FW
5 mobile harbour cranes of 40t lifting capacity
Solid fuels, scrap, pig iron, ferro-alloys, industrial minerals, fertilizers, agribulk, biomass
Crushing / screening / blending
Covered storage ► Metallic silos: 145.000 m ³ ► Warehouses: 52.000 m ²

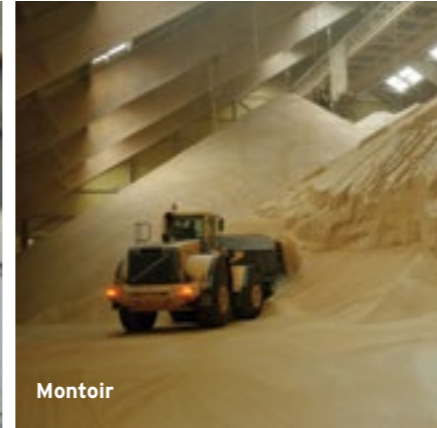
DRY BULK FRANCE



Caronte



Sète



Montoir



Fos-sur-mer

DRY BULK FRANCE

12 ports: Bayonne, Bordeaux, Calais, Dunkirk, Fécamp, Fos-sur-mer, Honfleur, Montoir, Nantes, Rouen, Sète, Caronte

260 ha

Coal, cokes, solid fuels, agribulk, fertilizers, sugar, forest products, break bulk, containers, biomass, etc.

330.000 m² of covered storage

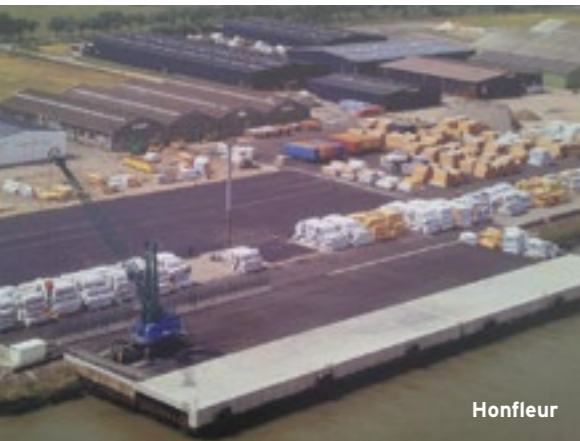


Montoir

DRY BULK FRANCE



DRY BULK FRANCE



DRY BULK FRANCE

12 ports: Bayonne, Bordeaux, Calais, Dunkirk, Fécamp, Fos-sur-mer, Honfleur, Montoir, Nantes, Rouen, Sète, Caronte

260 ha

Coal, cokes, solid fuels, agribulk, fertilizers, sugar, forest products, break bulk, containers, bulk liquids, etc.

330.000 m² of covered storage



DRY BULK GDANSK



PORT POLNOČNY, GDANSK

60 ha

Extensive storage capacity for import and export bulk cargoes

Permissible draft: 15,00 M Baltmax

2 cranes of 60t lifting capacity

Conveyor belts 4.000 t/hour

Reloading to train 2.400 t/hour

Blending and screening

Raw materials gateway serving Poland and Central Europe



DRY BULK ABIDJAN

IVORY COAST

SEA-INVEST BULK TERMINAL

Fully equipped dedicated terminal for any type of dry bulk commodity

46.000m² covered storage

3 cranes of 40t lifting capacity

Dedicated hoppers, conveyor belt system and screening

Bagging plant for agribulk, fertilizers



SEA-invest Bulk Terminal

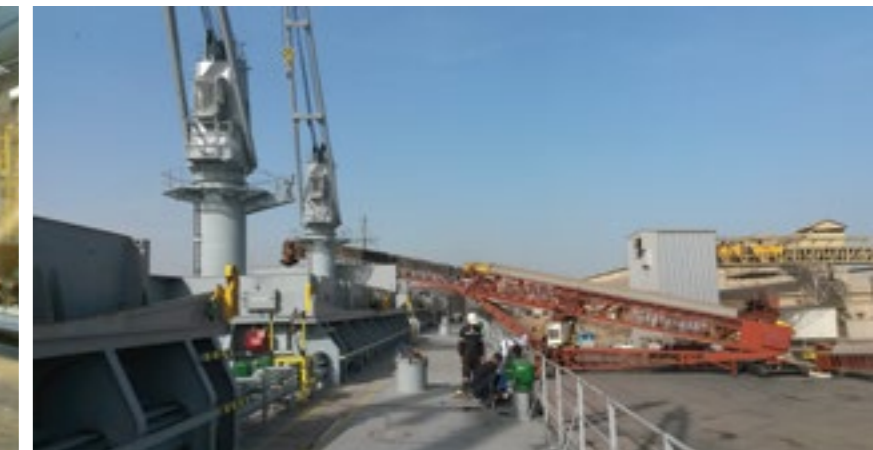


DRY BULK DAKAR

SENEGAL

DAKAR

Handling export of minerals



LIQUID BULK BELGIUM

SEA-TANK TERMINAL



GHENT QUAY 480 - 540

Grootdok - Draft 12,25 m FW
1.200 m of quay length
Chemicals, oleo chemicals, vegetable oils, fats, liquid fertilizers, biofuels, ...
Capacity: 260.000 m ³ on 7 ha
Tanks from 200 m ³ to 13.000 m ³
Pumping capacity up to 1.000 m ³ /hour
Segregated storage
Access: road, rail, barge, sea

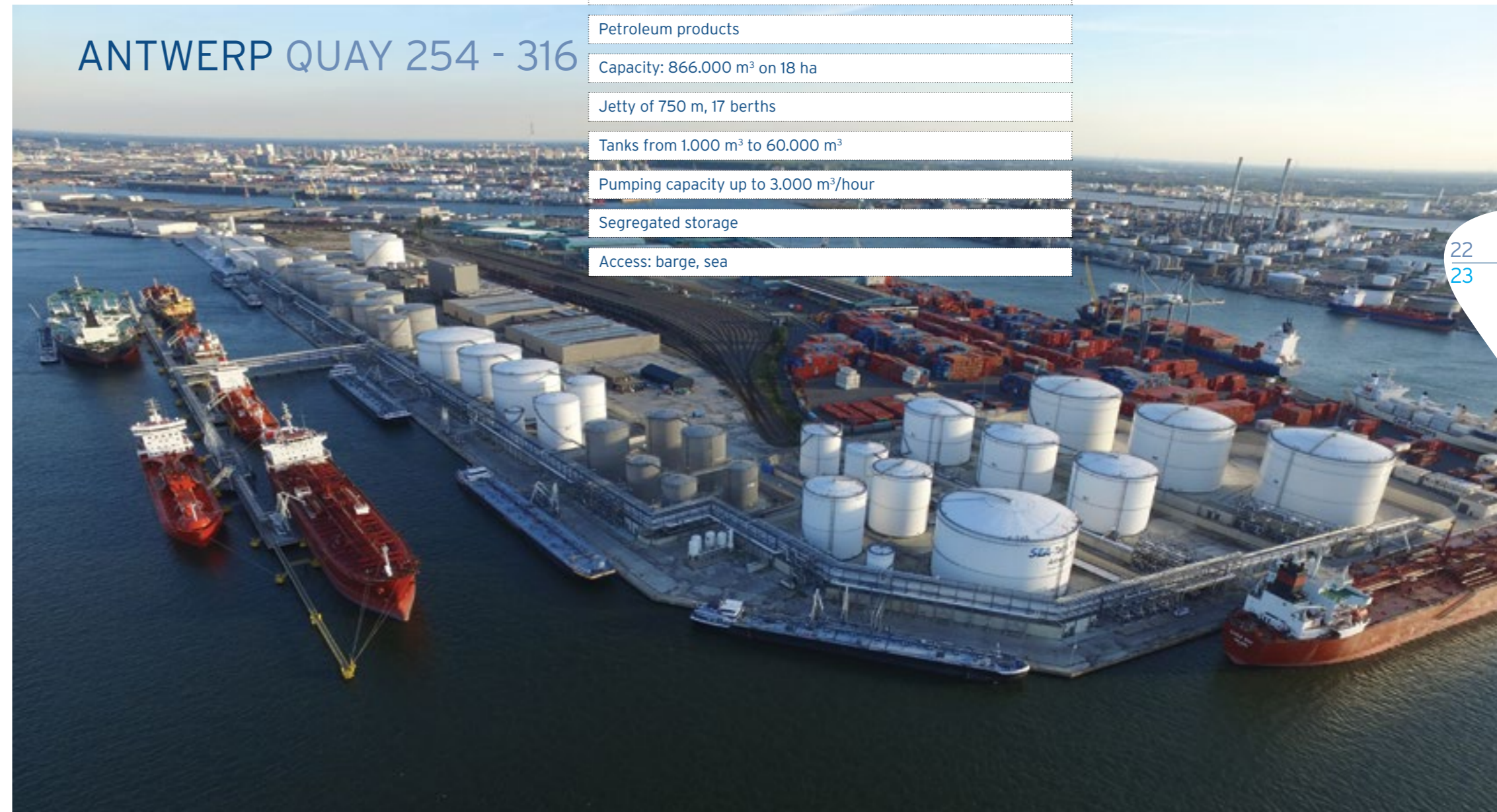
KEY FIGURES

Total capacity 2,4 million m³

43 million ton throughput/year

State-of-the-art storage

ANTWERP QUAY 254 - 316

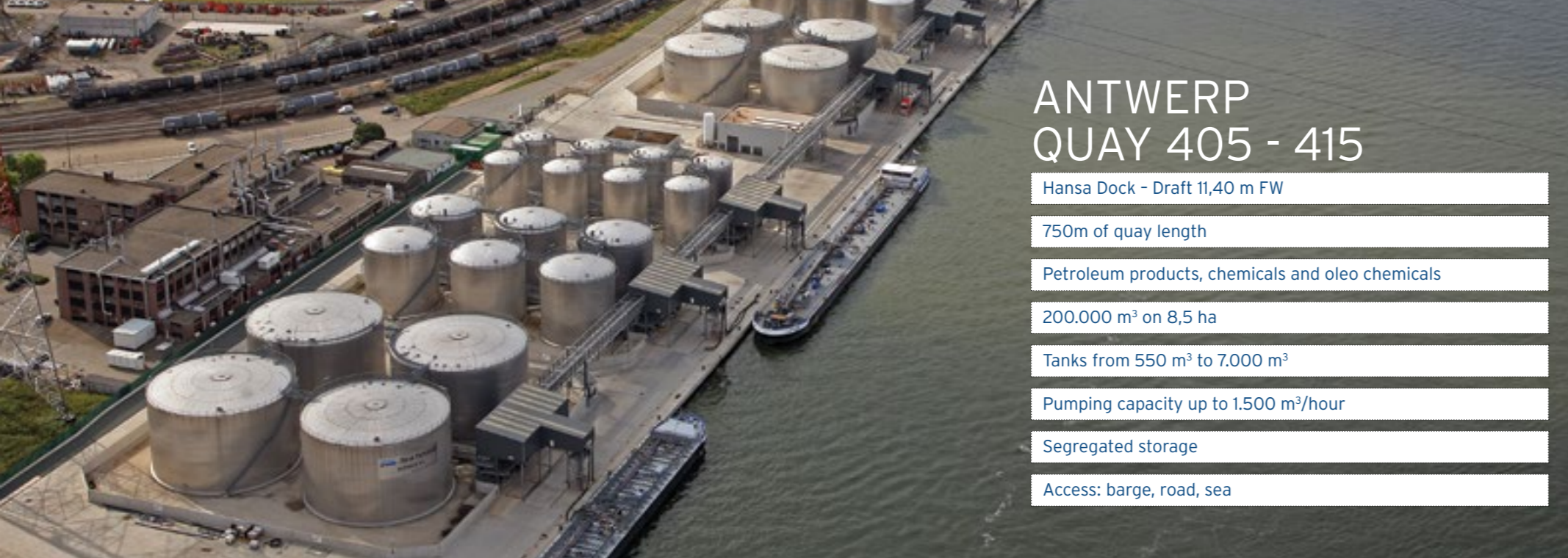


6th Harbour Dock - Draft 15,50 m FW
1.200m of quay length
Petroleum products
Capacity: 866.000 m ³ on 18 ha
Jetty of 750 m, 17 berths
Tanks from 1.000 m ³ to 60.000 m ³
Pumping capacity up to 3.000 m ³ /hour
Segregated storage
Access: barge, sea

ANTWERP QUAY 316 - 318

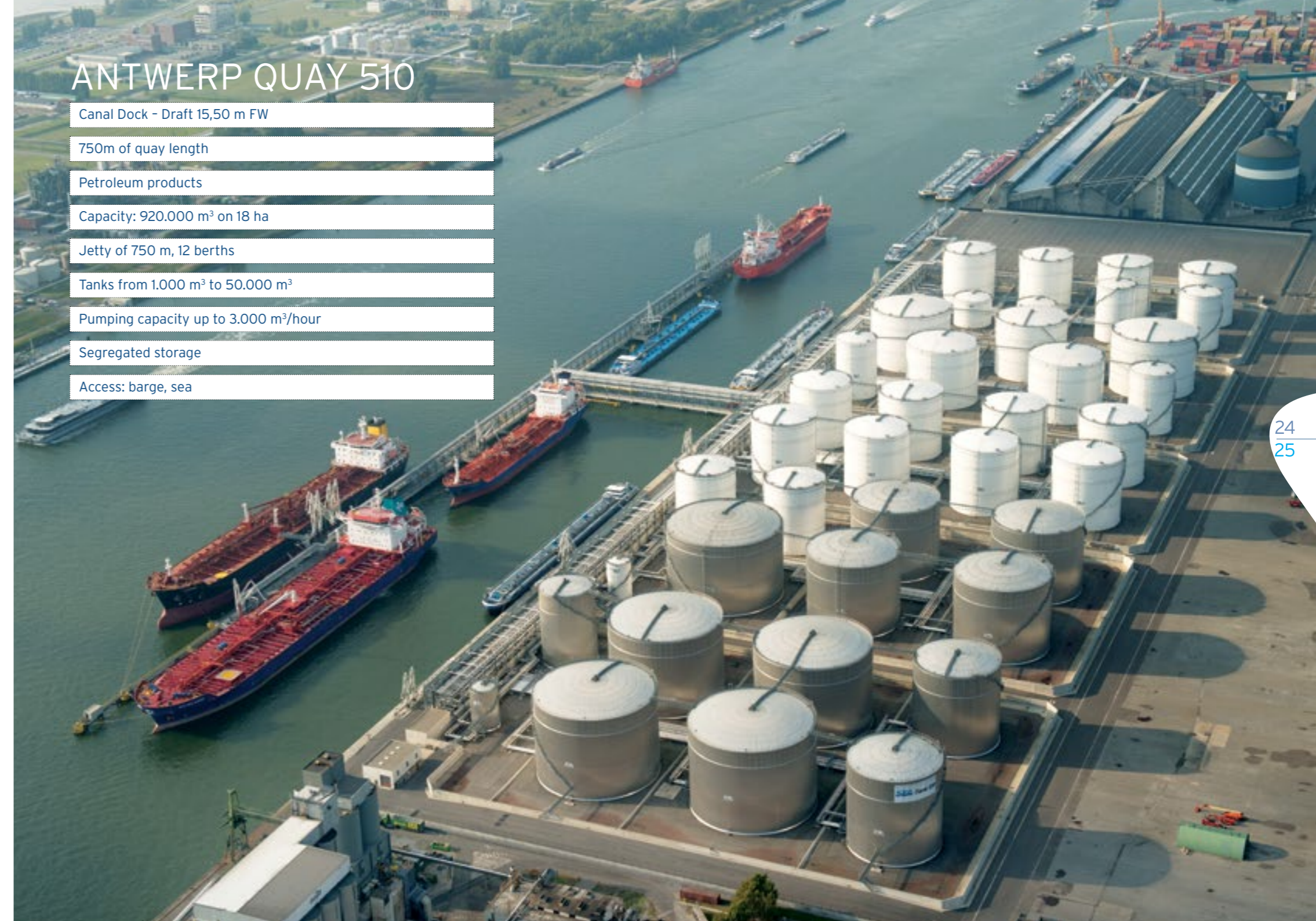
6 th Harbour Dock - Draft 14,00 m FW
600m of quay length
Kaolin
16.500 m ³ on 6 ha
Tanks from 1.500 m ³ to 3.000 m ³
Pumping capacity: up to 500 m ³ /hour
Segregated storage
Access: road, rail, barge, sea





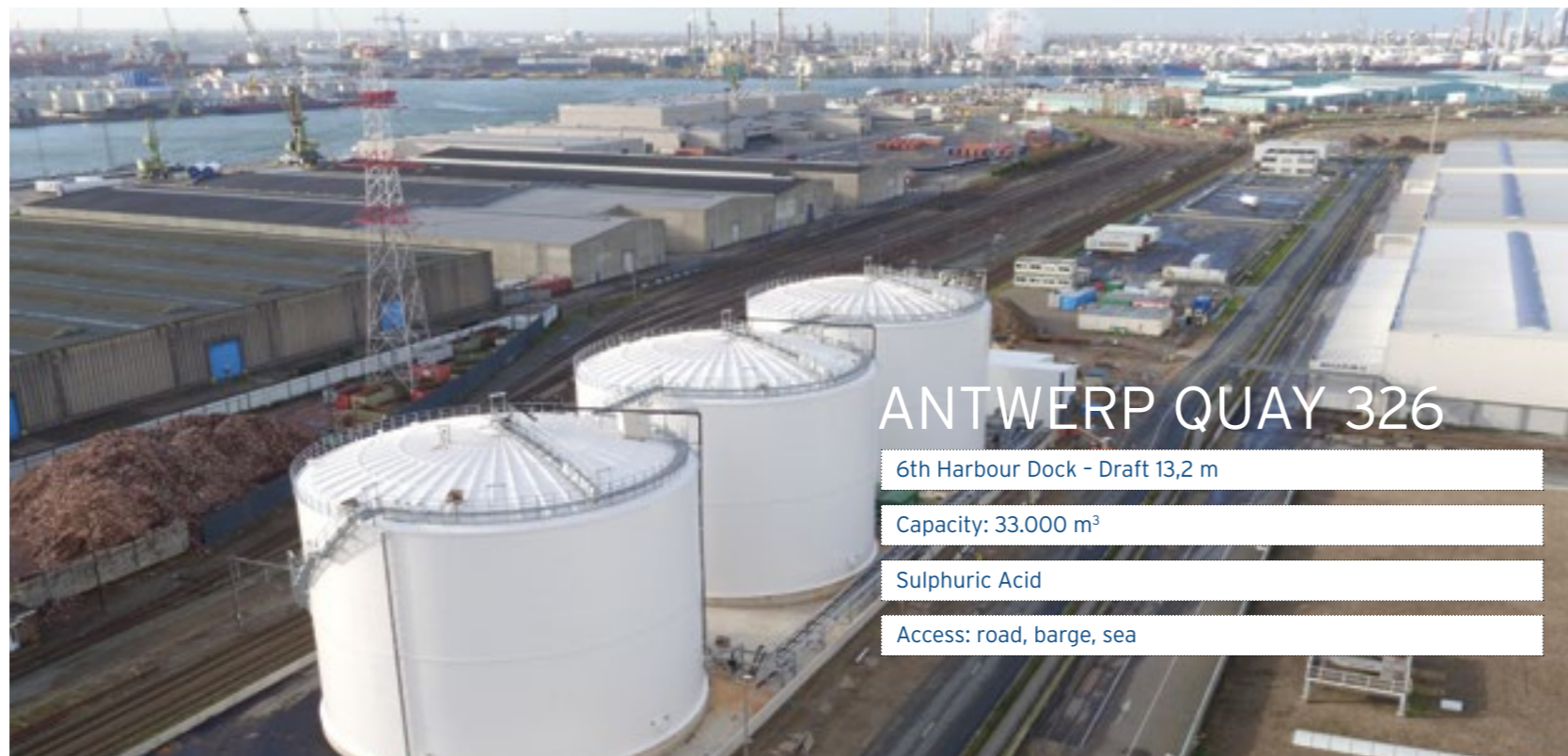
ANTWERP QUAY 405 - 415

- Hansa Dock - Draft 11,40 m FW
- 750m of quay length
- Petroleum products, chemicals and oleo chemicals
- 200.000 m³ on 8,5 ha
- Tanks from 550 m³ to 7.000 m³
- Pumping capacity up to 1.500 m³/hour
- Segregated storage
- Access: barge, road, sea



ANTWERP QUAY 510

- Canal Dock - Draft 15,50 m FW
- 750m of quay length
- Petroleum products
- Capacity: 920.000 m³ on 18 ha
- Jetty of 750 m, 12 berths
- Tanks from 1.000 m³ to 50.000 m³
- Pumping capacity up to 3.000 m³/hour
- Segregated storage
- Access: barge, sea



ANTWERP QUAY 326

- 6th Harbour Dock - Draft 13,2 m
- Capacity: 33.000 m³
- Sulphuric Acid
- Access: road, barge, sea



LIQUID BULK FRANCE

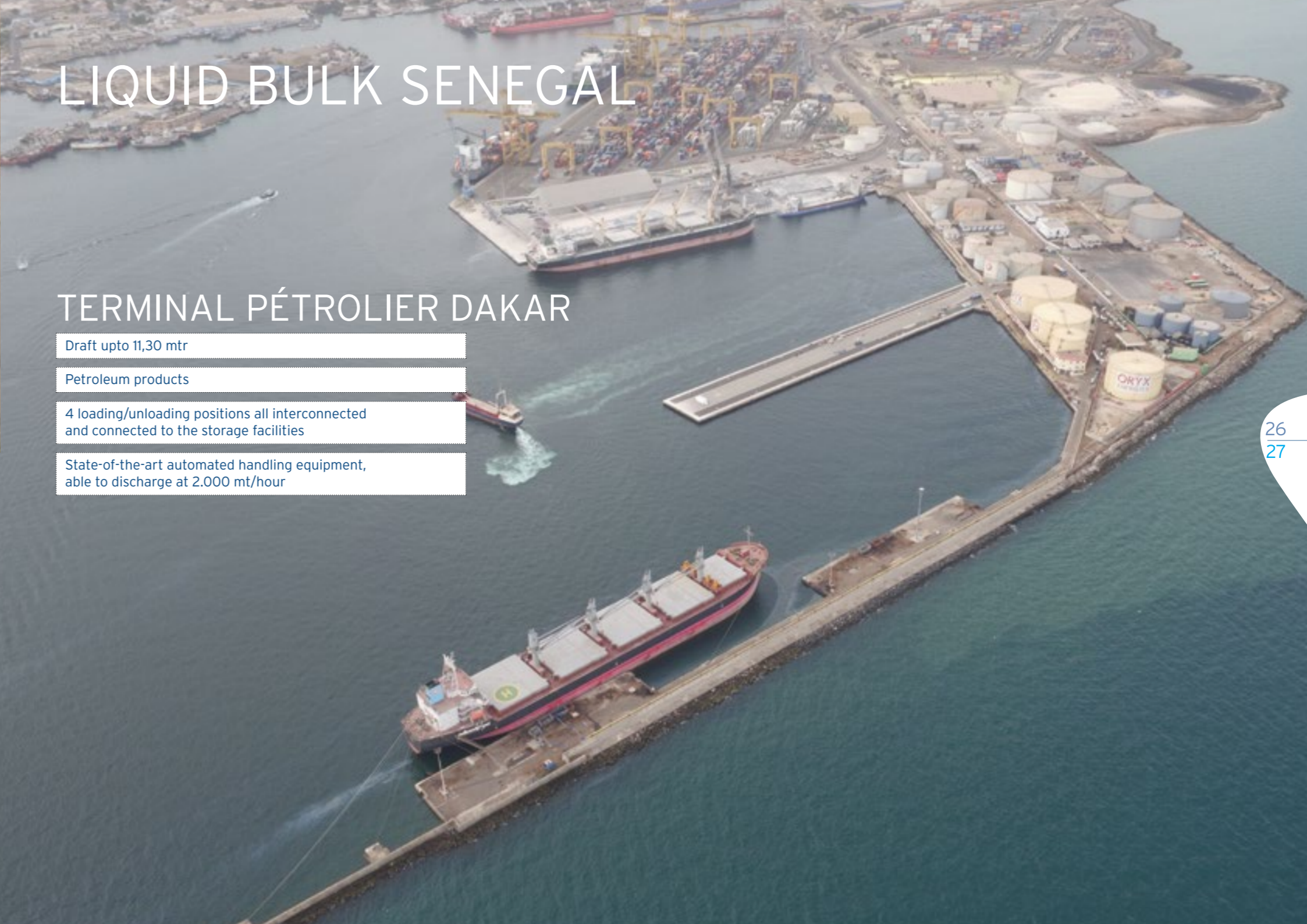
ROUEN

- Grand Couronne - Draft 10,50 m FW
- 400m of quay length
- Petroleum products, fertilizers, vegetable oils
- Capacity: 110.000 m³ on 7 ha
- Tanks from 1.000 m³ to 5.000 m³
- Pumping capacity up to 1.800 m³/hour
- Segregated storage
- Access: barge, rail, road, sea



BORDEAUX

- Bassens Aval - poste 436 - Draft 10,50 m FW
- 300m of quay length
- Fertilizers, vegetable oils
- Capacity: 40.000 m³ on 2,5 ha
- Tanks from 1.000 m³ to 3.400 m³
- Pumping capacity up to 400 m³/hour
- Segregated storage
- Access: barge, road, sea



LIQUID BULK SENEGAL

TERMINAL PÉTROLIER DAKAR

- Draft upto 11,30 mtr
- Petroleum products
- 4 loading/unloading positions all interconnected and connected to the storage facilities
- State-of-the-art automated handling equipment, able to discharge at 2.000 mt/hour

FRUIT & FOOD

ANTWERP | ZEEBRUGGE | ROTTERDAM

HAMBURG | SOUTH AFRICA



Hamburg Fruit Warf



Zeebrugge - packing station

HANDLING

Discharging & loading of specialised reefer vessels and containers

Large container capacity with 1000 reefer connections

Fruit & vegetables (storage temperature: -1°C / +14°C)

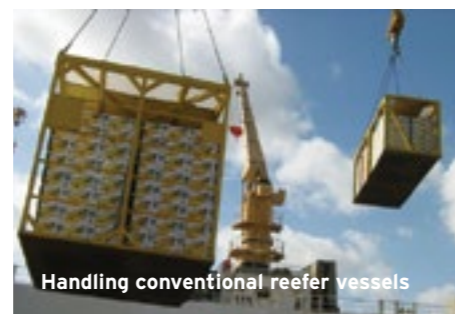
Deep-frozen products (-20°C): meat, seafood, juices, vegetables,...

Handling of general cargo

State-of-the-art infrastructure

- ▶ Quality control, packing, distribution
- ▶ Fully controlled by WMS with real time barcode scanning
- ▶ EC approved inspection point
- ▶ Barge, truck and rail connections
- ▶ ISO22000, HACCP, BRC, 360 Quality, Bio and ISPS certified

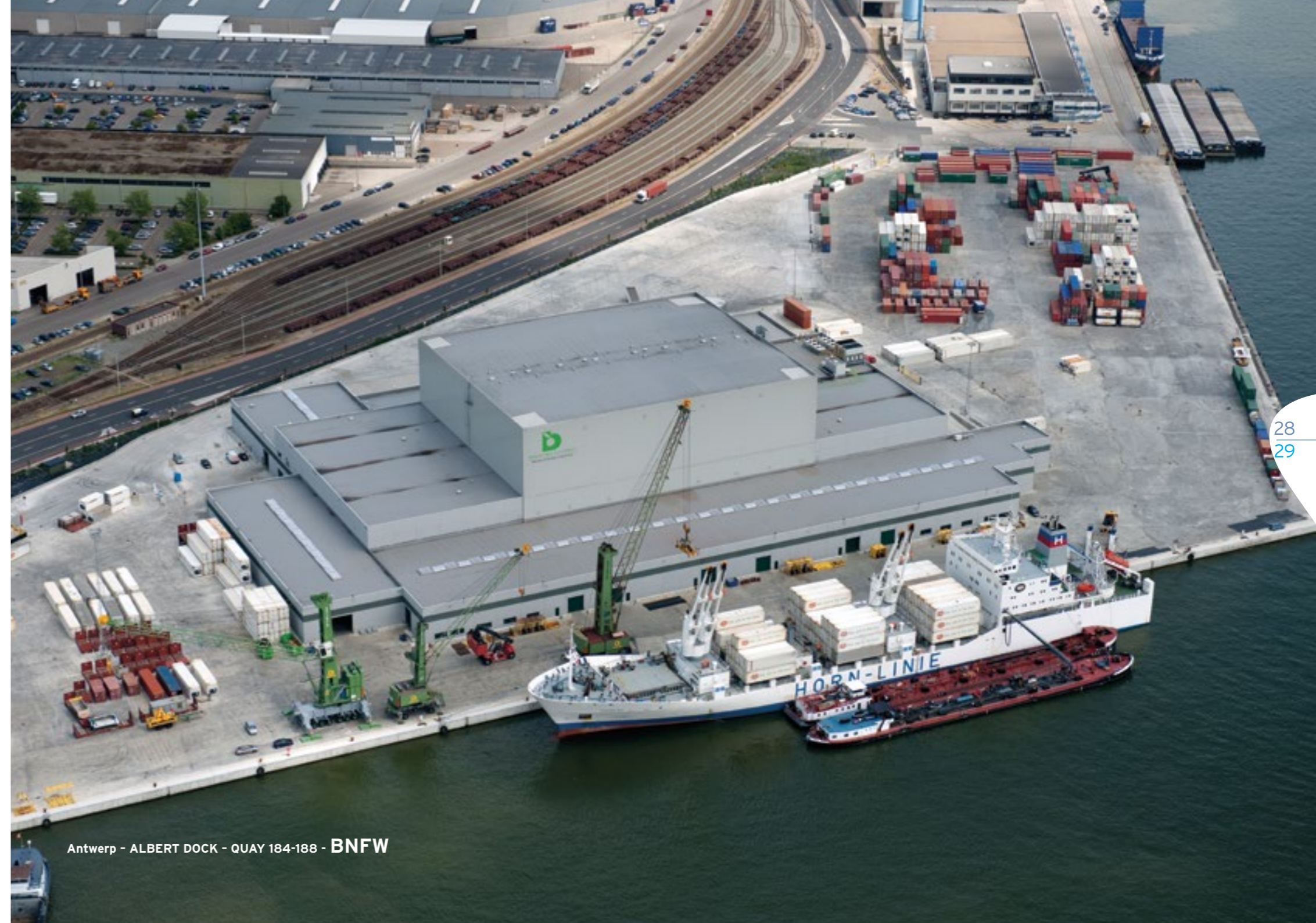
175.000 pallets storage capacity



Handling conventional reefer vessels



Rotterdam Fruit Wharf



Antwerp - ALBERT DOCK - QUAY 184-188 - BNFV

FRUIT & FOOD



South Africa - Cape Town - SAFT



Antwerp - automated warehouse



Antwerp - Leopold Dock - quay 220-224

BREAK BULK, CONTAINERS & RORO



Products: tropical logs, timber, bagged cargo, steel products, granite, cars, among others

SEA-invest also handles over 500.000 TEU/year

LOGISTICS & WAREHOUSING



RAIL TRANSPORT

320 wagons for bulk cargoes

Supplying several Belgian, Dutch, French and German industries

Transporting coal and iron ore to different steel factories and power plants

Transporting zinc and lead concentrates to non-ferrous smelters



WAREHOUSING

SEA-invest owns over 1 million m² of warehousing space in Europe and Africa.

Operated by SEA-invest or leased to third parties on medium or long term

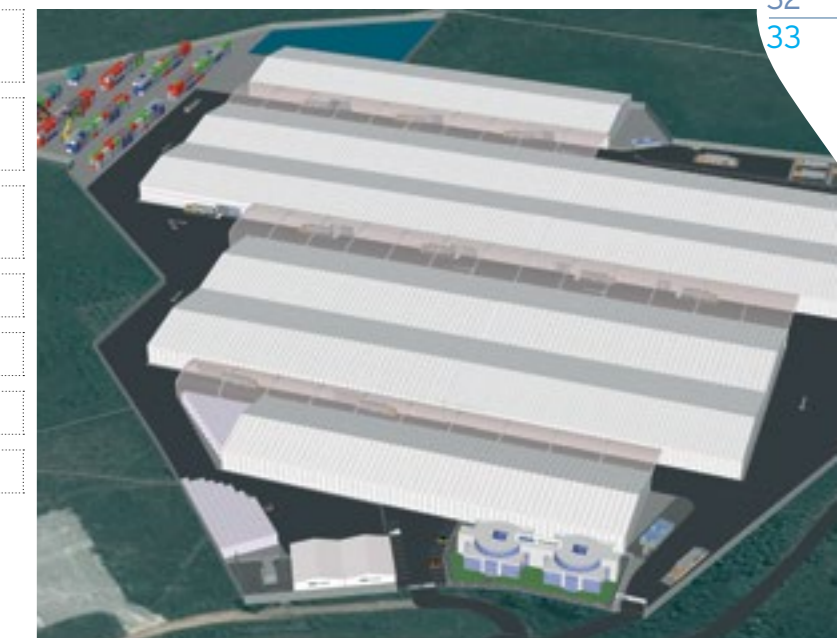
Handling and storage of different types of goods and commodities

Transport from/to the quays, rail & road centers

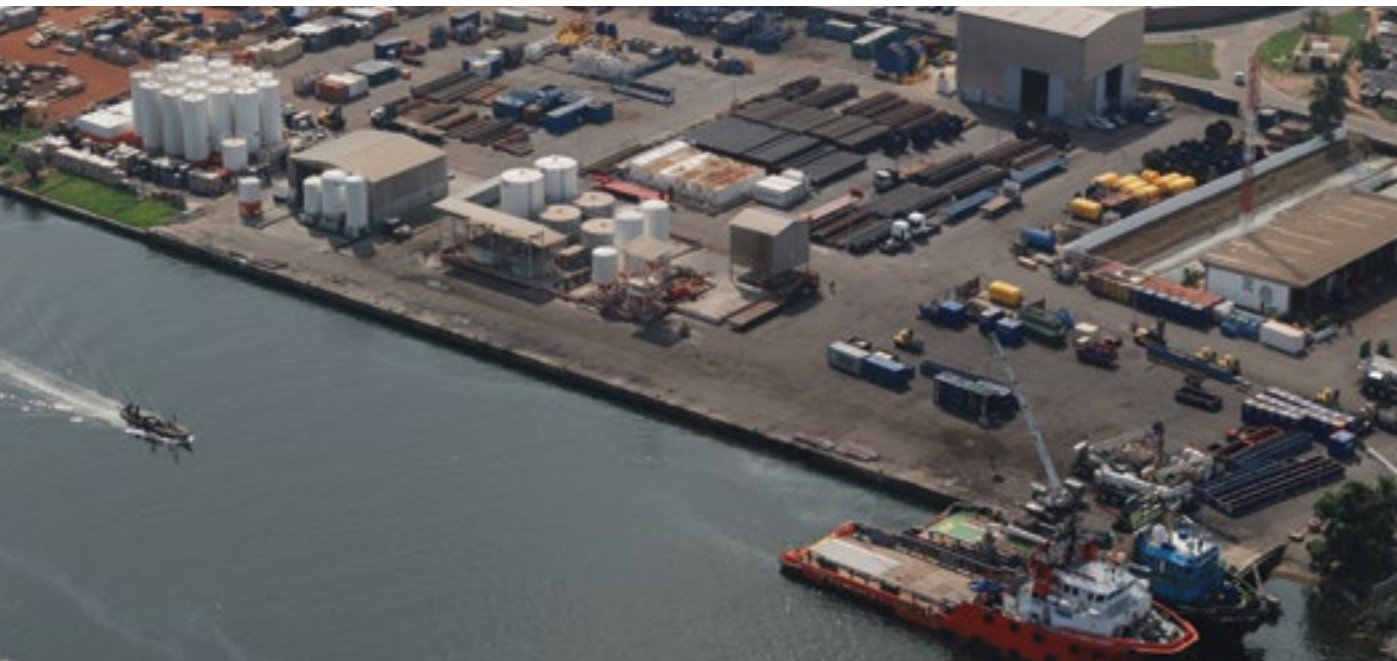
Bagging or debagging

Handling of pallets

Weighing trucks



PETRO-SEA LOGISTICS



ABIDJAN

Joint venture Petroci Holding (35%) group SEA-invest (65%)

Logistic services for the oil exploitation and production
 a. loading / unloading of supply vessels
 b. storage of equipment and materials (incl. liquids)
 c. compliant to the highest environmental standards



SEA-TRUCK AFRICA

Transport dry bulk, containers, bags,...



FREIGHT FORWARDING/SHIPPING/AGENCIES



SISA: SEA-INVEST SHIPPING AGENCY

Takes care of the vessel's operations in the port, the husbandry, the ship owner's representation,...

Offices in Belgium, France, Spain and West-Africa

Real time access to information

FORWARDING & CUSTOMS BROKERAGE SERVICES

BELFRUCO

Freight forwarders and customs brokers

3 sites: Antwerp, Ghent, Zeebrugge.
Sister companies in Rotterdam and Hamburg.

Import-export-cross trade

AEO certified

Phytosanitary control

Transport

Main activities

- ▶ Customs brokerage
- ▶ Fiscal representation
- ▶ Logistic support, Extranet Portal, interfaces, EDI
- ▶ General forwarding

Secure powerful on-line management tools ranging from consulting extensive port statistics and terminal characteristics to checking and analyzing portlogs and port call accounts

A global network dedicated to your tankers, gas carriers, fruit carriers, bulk carriers, heavy lifts carriers, general cargo vessels, cruise vessel, RORO vessels, yachts,...

SEA-TANKERS

Maritime transport of petroleum derivatives and chemicals

Modern fleet of 17 tankers

A reference in the small tanker segment

An efficient and flexible fleet ranging from 1.500 to 20.000 DWT

Operates in the Mediterranean, Atlantic and Caribbean trade as well on the African coastal market



SEA-TECH

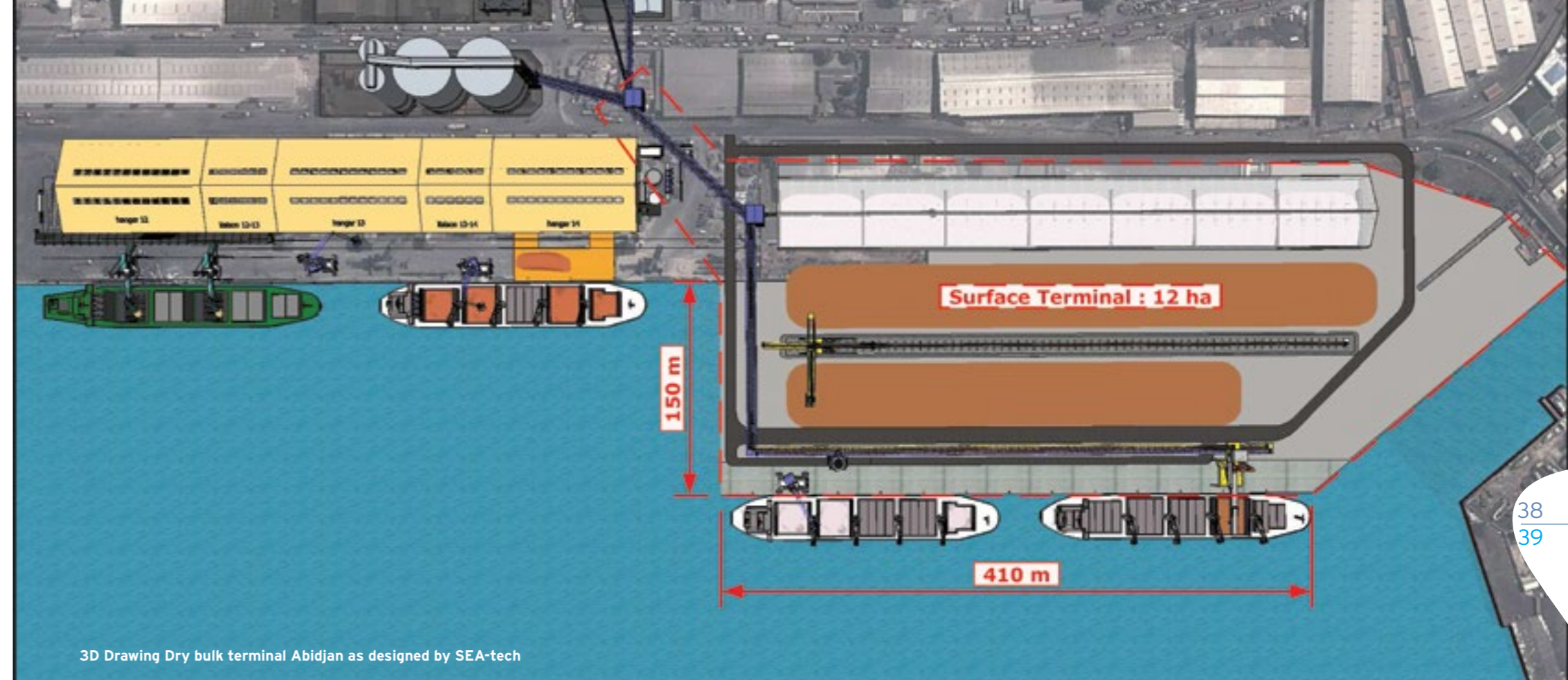


SEA-TECH

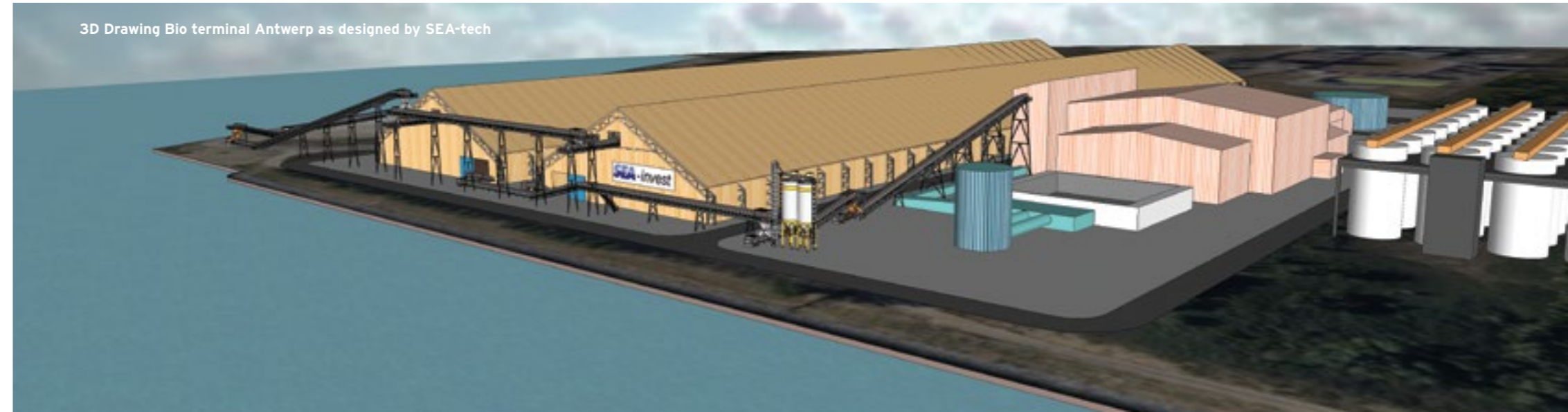
Deals with port and terminal engineering for dry bulk and liquid products world wide

Its services encompass the drawing up of preparatory contracts, design and project management

- Operates in all areas of handling:
- ▶ Maritime and inland navigation
 - ▶ Loading and unloading equipment
 - ▶ Terminal lay-out
 - ▶ Open and covered storage
 - ▶ Distribution and packaging centres
 - ▶ ...



3D Drawing Dry bulk terminal Abidjan as designed by SEA-tech



3D Drawing Bio terminal Antwerp as designed by SEA-tech

OFFICES

GHENT | PARIS | ABIDJAN

SEA-INVEST FRANCE

1/3 rue Danton
92300 Levallois-Perret (Paris)
France
T +33 1 41 05 37 00
F +33 1 41 05 37 10
<http://my.sea-invest.fr/contactus/societes.asp>

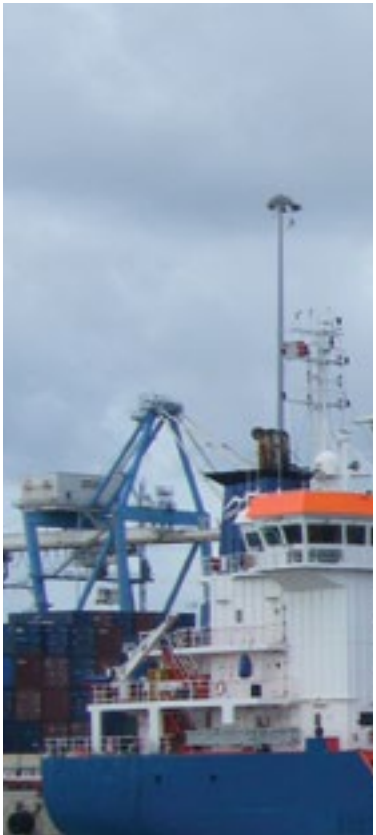
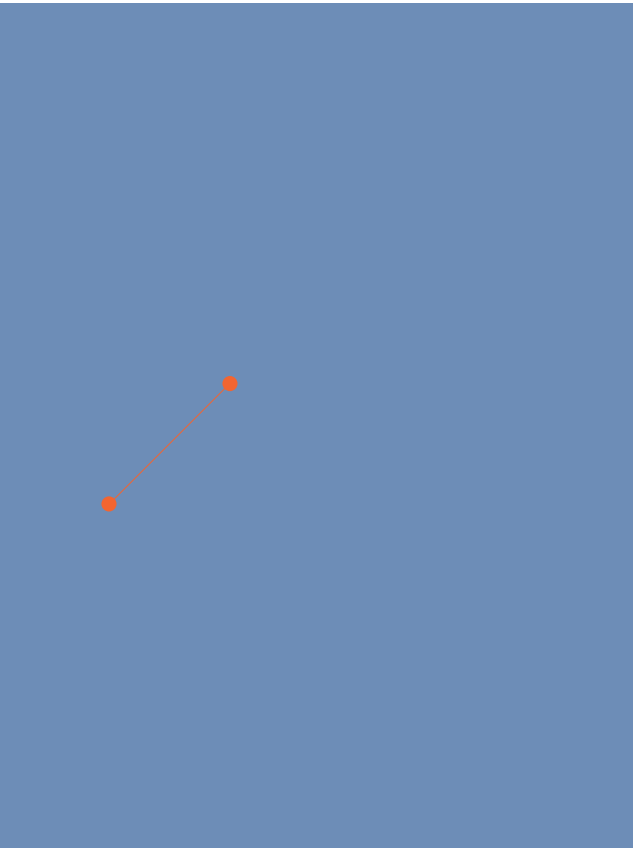
SEA-INVEST IVORY COAST

ABIDJAN
Immeuble Botreau Roussel - 7ième étage
01 BP 2132 Abidjan 01
Ivory Coast
T +225 21 21 85 00
F +255 20 32 15 48
contact@sea-invest-ci.com

SEA-INVEST

Skaldenstraat 1
9042 Ghent
Belgium
T +32(0)9 255 02 11
F +32(0)9 259 08 94
info@sea-invest.be





DERDE DRUK JANUARI 2016



WWW.SEA-INVEST.COM

