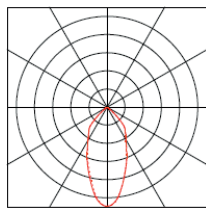
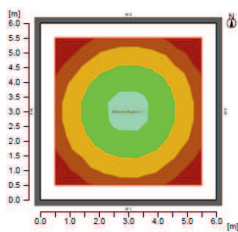


# Exterior Lighting

## Dover C LED Canopy Light



### Luminous Intensity (example)



Typical output 120W  
B50 beam angle  
272x lx average  
5000K cool white  
Luminaire height 5m

### Ordering

#### DOVC-BH-DEF-J-L-M

Where

<b>B</b>	Size	40 = 400mm, 60= 600mm
<b>H</b>	Diffuser	AD = acrylic, PD = Polycarbonate
<b>D</b>	Wattage	60, 90, 120, 150,
<b>E</b>	LED Colour	CW
<b>F</b>	Beam angle	B120,B50
<b>J</b>	Sensor	M50 = Microwave with 50% preset
<b>M</b>	Photocell	P = fitted

Example

DOVC-AD40-120CWB50 - Canopy light with 400mm panel, 120Watt, cool white, acrylic diffuser, 50 deg beam angle

Photometric files are available up on request

### Dover canopy lighting is best for

Petrol station forecourts  
Tunnels and walkways  
Undercroft

Not sure if the Dover canopy is right for your needs? Give us a call to discuss your requirements.



**UK Manufacture**  
**5 YEAR WARRANTY**

### Dover LED Canopy Light – for ultimate brightness, service life and reliability

The Dover C canopy light from Earlsmann starts instantly at full brightness, even in cold conditions – so it's ideal for outdoor areas such as forecourt canopies. It's also perfectly suited to sensor operation, helping you to save energy and improve lighting control.

With a service life of over 50,000 hours, the Dover C canopy lights require minimal maintenance, which is particularly important when located in hard-to-reach areas. The LED drivers are mounted in a separate box to provide improved reliability and easier servicing.

This high performance canopy light is manufactured in the UK and uses the latest technology to provide reliability.

Providing up to 100lm/W, Dover C canopy lights combines high-quality light levels with a significant reduction in energy use – helping you to lower your carbon footprint.

For total protection in high ambient temperatures our luminaires have active thermal control.

**Good to know:** The Dover C uses the latest CREE LED technology and reflectors to provide unrivalled efficiency

### Benefit from...

Low power consumption - **Reduced energy usage, reduced CO2**  
Instant start, full brightness at turn on - **Improved safety**  
Long life, reduced maintenance - **Lower running costs**  
Active thermal control - **Increased reliability**

### Specifications

Colour Temperature	5000K - cool white
Colour Rendering Index	up to 90Ra
Sealing	Ip65
Voltage	180-305Vac 50/60Hz
Markings	CE
Efficacy	up to 100lm/W
Mounting	to Unistrut or similar
Weight	up to 12kg depending on model
Dimensions	320 x 220 x 120
Finish	White powder coat
Diffuser	Acrylic (standard)
LED	CREE array
LED life $T_j=85^\circ\text{C}$	LM80/TM21 (6k) L90>36000hrs *
Ambient temp $T_a$	-25°C / + 40°C
Power factor	>0.98 at full power
Driver	>92% efficiency at full power

\* Please call us to discuss LM80/TM21 testing

### Options

Beam angle	B120 = 120°, B50 = 50°
Sensor operation	Microwave
Photocell	
Size	400mm or 600mm
Colour	
Diffuser	Polycarbonate

### Output

Power (W)	Total W	Output (lm) CW
60	68	7000
90	105	10500
120	135	14000
150	170	17500

Please note these come with a remote drive box with 3m cable as standard