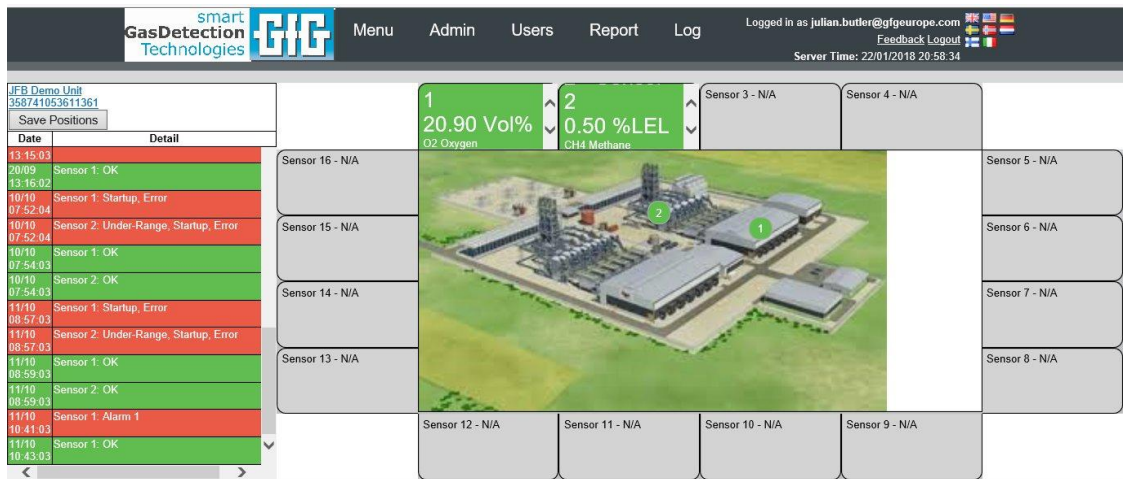


## Web Based Remote Monitoring for your Gas Detection System



*Featuring mobile connectivity, SD card, instrument grade I/Os and GfG CDLSmartHub™ integration for online management including simple Dashboard with On-Site Alarm Visualisation, Active Alarms and Alarm Notifications*



### Technology Summary

Managing your gas detection system has never been easier. With the flexibility of 16 Inputs & Outputs, ultra-low power consumption, on board intelligence for real time local monitoring, integrated SD card, communication via mobile phone networks, and high resolution data transferred seamlessly and securely from multiple locations to the GfG CDLSmartHub™.

From the GfG CDLSmartHub™ you can configure and manage your system, set and continuously monitor alarms and set audit trails, integrate and export data, view trends, visualisations and analytics OR, for a small fee,

**WE CAN DO ALL THIS FOR YOU !!**

### Key features

- Automatic and secure connectivity to the GfG CDLSmartHub™.
- Continuous monitoring of alarms
- Any alarm forces the GfG NANOULTRA to link to the GfG CDLSmartHub™ which in turn sends alarms to configured recipients via email or SMS
- Configure unlimited alarm recipients with associated email addresses and mobile phone numbers
- Full uneditable audit trail of any alarm and who it was sent to
- Heart beat log-ins at pre-configured intervals providing on-going system integrity checks
- On board back up battery with power failure alert
- All hardware mounted in weather proof enclosure
- GfG CDLSmartHub™ offers multiple languages, automatic time zones and instant visibility on line

## Physical

Case: Anodised Aluminium.

H\* = 109 mm

(Antennae length 78 mm)

W\* = 29 mm

D = 95 mm

\*Excluding detachable mounting brackets

## Power Supply/consumption

Option	Source	Consumption*
A	9-30 V dc	2ma @ 12V
B	3.6V dc	150 µA

\*When not transmitting

## Indicative Battery Life

Option	Source	Lifetime
A	12V dc 9Ahr	> 18months*
B	2 x D Cells 3.6V dc	> 4 years*

\*Writing to SD card 1/sec; reporting to CDLSmartHub 1/Hour

## I/Os

### Analogue inputs

4 x 16 bit resolution with 5 selectable (via GfG CDLSmartHub) gain ranges 0 to 2.5,5,10,20,33 Vdc. Bi Polar and Differential inputs available

### Digital inputs

4 x Optically Isolated

### Digital outputs

4 x Optically Isolated

## On-Board Data Storage

### Integral SD Card Writer

Class 4, 4-32GB

Sampling rate set via GfG CDLSmartHub™ at rates up to 1 sample per second. Can provide storage for up to 5 Years @1 sample per second (channel selection dependent).

Logs data in a standard CSV file format

## FRAM size

32KB

## Monitoring & Diagnostic LEDs and Button

GSM active/server handshake

SD card status

General status

Force report and SD card eject button (dual function)

## Connectors

Connections via two, 24 and 18 pin Molex microfit connectors.

## Modem

2G, or 3G, Quad-Band GSM

(850/900/1800/1900 MHz)

GPRS class 12 support.

Supplied with un-steered fully roaming SIM, enabled for regions: Emea, Apac, Latam.

## Antenna and connector

SMA male bulkhead connector for

GSM Whip antenna

High Gain antenna and cable for remote antenna installation available

## FOTA

Modem and microprocessor fully FOTA enabled (Firmware-Over-The-Air).

## Communication Protocols

RS232 and RS485

I2C and SPI

Modbus

ASCII

Various Proprietary & Other standards [See OEM options below]

## Environmental

Operational Temperature range

-20 to +75 °C

WEEE regulations apply

## Approvals

CE

## OEM Options

CANbus (Compatible With

ISO11898-2 Standard)

Integrated GPS capability

## Configuration and Management via GfG CDLSmartHub

**Plug and play** - Log in to the CDLSmartHub™ is fully automatic, after the initial set-up, as soon as the NanoULTRA is powered up.

Once set up data is uploaded and a new configuration file is automatically downloaded to the NanoULTRA.

Geo-position is automatically enabled from GSM mast; exact position upload via QR code and smart phone.

Battery and GSM signal strength and quality reported

## Download Settings (which can be updated at any time)

High and low alarm levels on all channels

Alarm by SMS or email

Alarm recipient list

Sampling rates

Reporting rates

SD card logging rates

Analogue input gain ranges

Name locations

User and admin details