

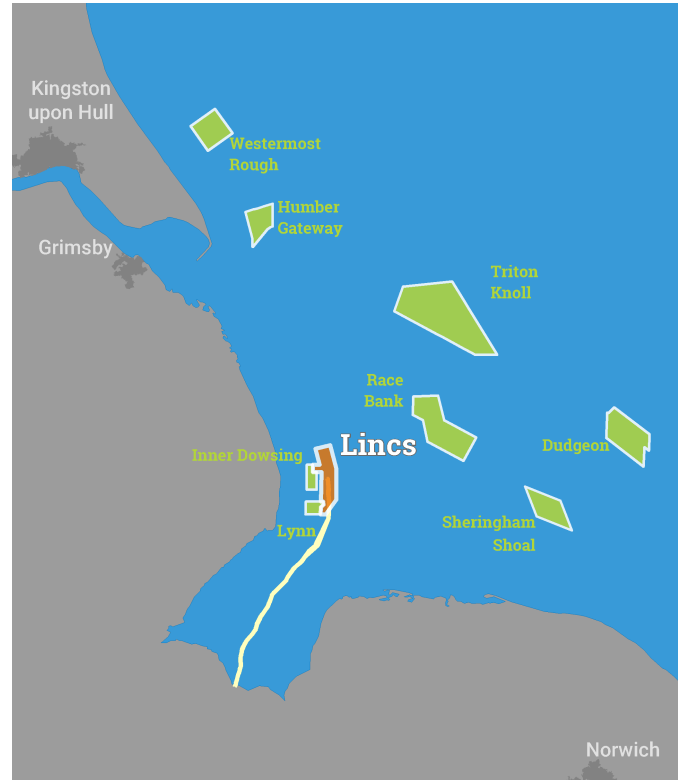


Kingfisher Wind farms chart

Lincs offshore wind farm
January 2020

Description

The Lincs Offshore Wind Farm is operated by Orsted. It is situated approximately 8 km from shore in the Southern North Sea, off the Lincolnshire coast. The wind farm is fully operational and has 75 turbines, a total capacity of 270 MW and covers an area of approximately 40 km².



Emergency procedures

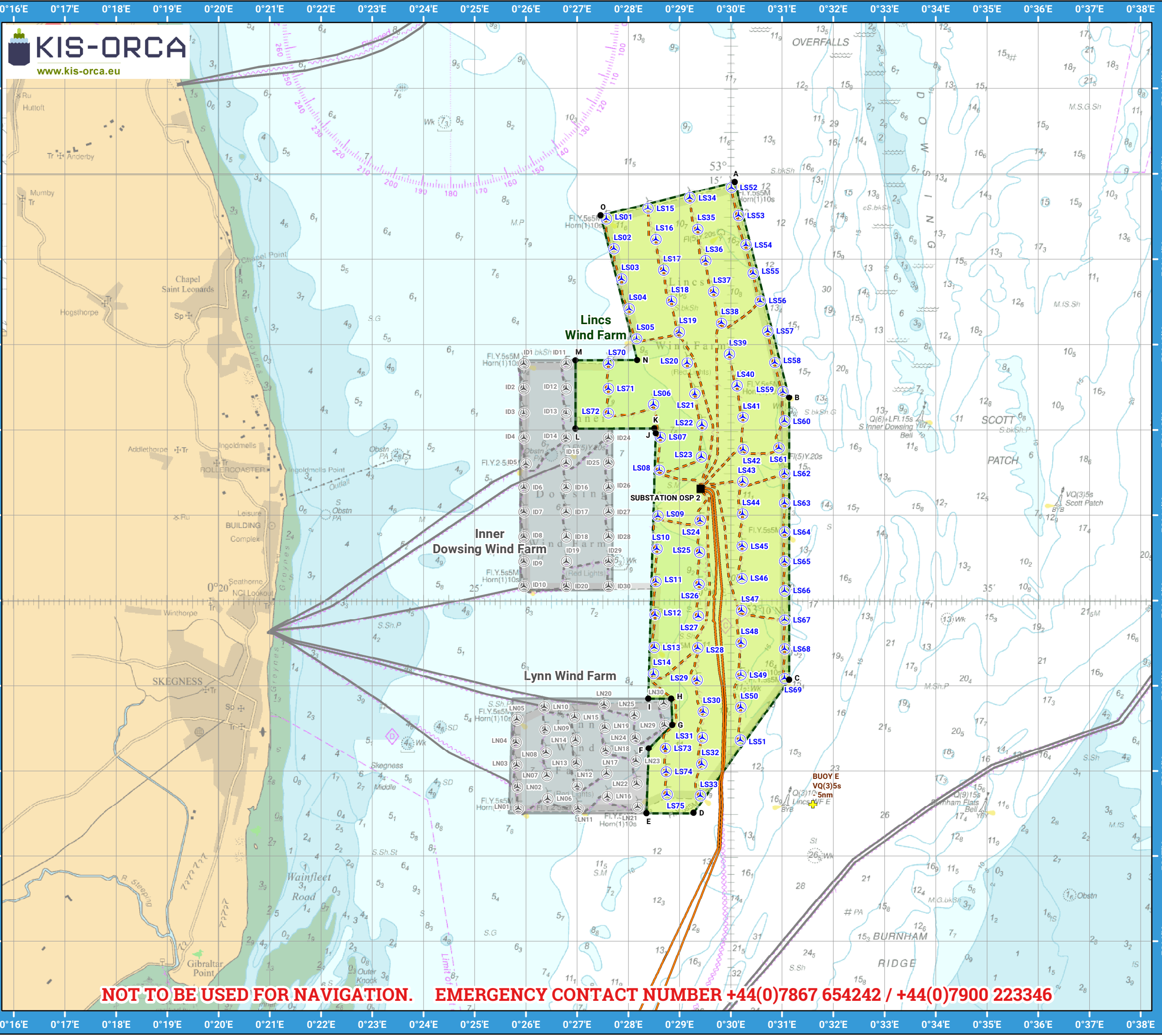
1. If you suspect you have snagged a subsea cable or renewable energy structure, DO NOT endanger your vessel and crew by attempting to recover your gear.
2. Carefully plot your vessel's position as accurately as possible.
3. Advise the Coastguard of your situation, and call the 24 hour Emergency Number and state that an incident is occurring concerning a subsea cable or renewable energy structure.

Reducing the risks whilst fishing

To reduce the risks of fishing near offshore structures, it is essential to be up to date with KIS-ORCA information. KIS-ORCA information is easy to install on your vessel's fishing plotter and ensures skippers are able to make informed decisions for their safety.

The closer to the surface a subsea cable is lifted when fouled by fishing gear, the more danger there is to the fishing vessel. In the interests of fishing safety and to prevent damage to subsea structures, fishermen are advised to exercise caution when fishing in the vicinity of subsea cables and renewable energy structures. Loss of gear, fishing time and catch can result if a trawler snags a subsea structure and there is serious risk of loss of life.

Emergency contact number +44(0)7867 654242 / +44(0)7900 223346



**Lincs
Offshore Wind Farm**

- Key**
- Site boundary
 - Wind turbine
 - Buoy
 - Substation
 - Export cable
 - Inter array cable

Grey coloured features displayed on this chart represent additional offshore wind farm structures. Visit www.kis-orca.eu/map for more info.

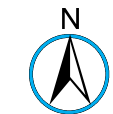
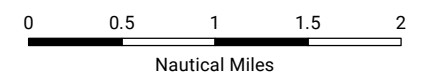


Projection: World_Mercator
Spheroid: GCS_WGS_1984
Datum: D_WGS_1984

This data is issued as a guide only. Seafish, cable / structure owners and Distributors accept no responsibility for any inaccuracies however caused.

Please be aware that other structures & cables may exist in addition to those shown on this chart.

©Crown Copyright and/or database rights. Reproduced by permission of the Controller of Her Majesty's Stationery Office and the UK Hydrographic Office (www.GOV.uk/UKHO).



Scale @ A3:
1:75,000

Asset locations

Extents

A	53°14.907'N 00°30.076'E
B	53°12.381'N 00°31.138'E
C	53°09.069'N 00°31.138'E
D	53°07.508'N 00°29.272'E
E	53°07.504'N 00°28.355'E
F	53°08.267'N 00°28.399'E
G	53°08.541'N 00°28.858'E
H	53°08.851'N 00°28.839'E
I	53°08.851'N 00°28.389'E
J	53°11.962'N 00°28.536'E

Extents

K	53°12.020'N 00°28.510'E
L	53°12.016'N 00°26.969'E
M	53°12.819'N 00°26.967'E
N	53°12.820'N 00°28.170'E
O	53°14.513'N 00°27.461'E

Infrastructure

BUOY E VQ(3)5s - 5nm	53°07.610'N 00°31.600'E
SUBSTATION OSP 2	53°11.313'N 00°29.412'E

Turbines

LS01	53°14.475'N 00°27.569'E
LS02	53°14.124'N 00°27.717'E
LS03	53°13.772'N 00°27.866'E
LS04	53°13.421'N 00°28.014'E
LS05	53°13.069'N 00°28.162'E
LS06	53°12.299'N 00°28.487'E
LS07	53°11.917'N 00°28.624'E
LS08	53°11.532'N 00°28.604'E
LS09	53°10.992'N 00°28.576'E
LS10	53°10.607'N 00°28.556'E
LS11	53°10.222'N 00°28.538'E
LS12	53°09.836'N 00°28.520'E
LS13	53°09.451'N 00°28.503'E
LS14	53°09.142'N 00°28.489'E
LS15	53°14.598'N 00°28.382'E
LS16	53°14.235'N 00°28.535'E
LS17	53°13.873'N 00°28.688'E
LS18	53°13.511'N 00°28.840'E
LS19	53°13.149'N 00°28.993'E
LS20	53°12.786'N 00°29.145'E
LS21	53°12.425'N 00°29.297'E
LS22	53°12.060'N 00°29.436'E
LS23	53°11.687'N 00°29.424'E
LS24	53°10.940'N 00°29.400'E
LS25	53°10.566'N 00°29.388'E
LS26	53°10.192'N 00°29.377'E
LS27	53°09.819'N 00°29.364'E
LS28	53°09.445'N 00°29.352'E
LS29	53°09.067'N 00°29.340'E

Turbines

LS30	53°08.698'N 00°29.459'E
LS31	53°08.390'N 00°29.442'E
LS32	53°08.082'N 00°29.433'E
LS33	53°07.712'N 00°29.403'E
LS34	53°14.720'N 00°29.199'E
LS35	53°14.354'N 00°29.351'E
LS36	53°13.987'N 00°29.505'E
LS37	53°13.621'N 00°29.659'E
LS38	53°13.254'N 00°29.814'E
LS39	53°12.888'N 00°29.968'E
LS40	53°12.521'N 00°30.122'E
LS41	53°12.150'N 00°30.237'E
LS42	53°11.772'N 00°30.238'E
LS43	53°11.395'N 00°30.232'E
LS44	53°11.016'N 00°30.226'E
LS45	53°10.639'N 00°30.220'E
LS46	53°10.260'N 00°30.214'E
LS47	53°09.882'N 00°30.207'E
LS48	53°09.505'N 00°30.201'E
LS49	53°09.127'N 00°30.195'E
LS50	53°08.749'N 00°30.190'E
LS51	53°08.365'N 00°30.183'E
LS52	53°14.843'N 00°30.010'E
LS53	53°14.511'N 00°30.149'E
LS54	53°14.170'N 00°30.293'E
LS55	53°13.837'N 00°30.433'E
LS56	53°13.513'N 00°30.570'E
LS57	53°13.160'N 00°30.718'E
LS58	53°12.791'N 00°30.856'E

Turbines

LS59	53°12.451'N 00°31.016'E
LS60	53°12.104'N 00°31.048'E
LS61	53°11.790'N 00°30.935'E
LS62	53°11.488'N 00°31.047'E
LS63	53°11.146'N 00°31.047'E
LS64	53°10.803'N 00°31.047'E
LS65	53°10.460'N 00°31.048'E
LS66	53°10.117'N 00°31.047'E
LS67	53°09.774'N 00°31.047'E
LS68	53°09.432'N 00°31.047'E
LS69	53°09.088'N 00°31.048'E
LS70	53°12.778'N 00°27.611'E
LS71	53°12.488'N 00°27.610'E
LS72	53°12.198'N 00°27.611'E
LS73	53°08.266'N 00°28.721'E
LS74	53°07.993'N 00°28.738'E
LS75	53°07.726'N 00°28.754'E



Contact us

+44 (0) 1472 252 307
kingfisher@seafish.co.uk
 @kingfisherinfo
www.kingfishercharts.org

Stay up to date: Always ensure you have the latest Kingfisher Bulletin and Offshore Fishing Plotter on-board