

**May 2015**



**Acquiring, Exploring and Developing Oil  
and Gas Projects in North and South  
America**

Certain information regarding Petrichor Energy Inc., including management's assessment of future plans and operations, may constitute forward looking statements under applicable securities law and necessarily involve risks, including risks associated with oil and gas exploration, production, marketing and transportation such as loss of market, volatility of prices, currency fluctuations, imprecision of reserve estimates, environmental risks, competition from other producers and ability to access sufficient capital from internal and external sources; as a consequence, actual results may differ materially from those anticipated in the forward-looking statements. The offer is subject to normal commercial risk that the offer may not be completed on the terms negotiated or at all.

**Petrichor Energy** is an emerging oil and gas exploration company focused on acquiring, exploring and developing new oil and natural gas reserves in North and South America, employing the latest geophysical and geological technologies

**Strategy:** building reserves and production by exploring & developing low risk/maximum return properties with proven and probable oil & gas reserve assets

**Focus:** on new long life reserves (20-25 years) with access to pipelines & production infrastructure



### **Grow Reserve Base Through Drilling:**

- *Moderate depths*
- *Multi-zone objectives*
- *Near known pools or areas that are geologically understood*

- **Marble Falls** Pennsylvanian age limestone located in North Texas
- **11,695 acres** of oil-rich Marble Falls resource play
- **WI 66.67%**
- **Analogous** resource plays:
  - Marble Falls to Strawn Lime, West Texas
  - Mississippi Lime to Kansas/Oklahoma
- **Shallow** depths (less than 5,000 ft)
- **60 Vert/Hz wells** to date in area, with tremendous success
- **Majors** aggressively acquiring acreage and expanding development of properties in area, including; DTE Energy, EOG, Swan, Pioneer, Newark and Best
- **Low CapEx** – quick return
- **Low risk** / high reward



## Major Shareholders

Canadian	72.81%
United States	15.9%
International	11.28%
CDS & Co	60.7
Joe DeVries	10.1
Robert Haveman	9.4

## Market Statistics

Stock Exchange	TSX.V
Trading Symbol	PTP
52 Week High/Low	\$0.58 – 0.165
Outstanding Shares	31,001,329
Stock Options	1,492,500
Warrants	20,782,160
Fully Diluted Share Capital	53,275,989



Source: Yahoo Financial

## Marble Falls; Pennsylvanian Age Limestone North Texas

- ▶ **Ideal property location;** same geographic area as prolific Barnett Shale play in N. Texas
- ▶ **Majors** concentrated in prolific resource area, including, DTE Energy, EOG, Pioneer, Swan, Newark and Best
- ▶ Entry level land pricing
- ▶ Rapid development; known successful commercially productive oil and gas reservoirs

### **Analogous Resource Play**

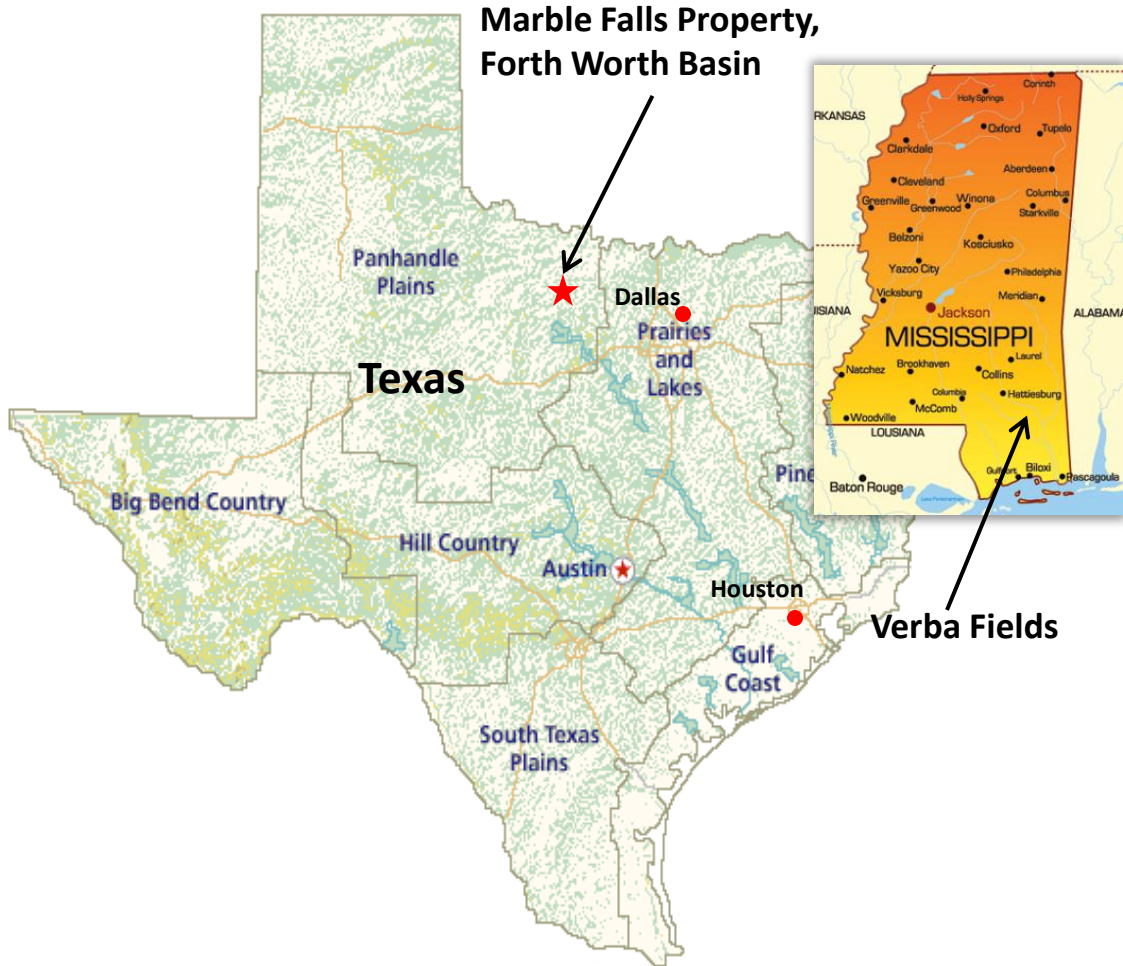
- ▶ Marble Falls resource play; multiple target zones
- ▶ Analogous to S. Kansas & N. Oklahoma limestone play

### **Experienced Management & Technical Team**

- ▶ Strategic & profitable business plan; continue to acquire acreage with excellent well economics
- ▶ Low development costs & well payouts less than 6 months from production
- ▶ Proven management and technical experience
- ▶ Creating shareholder value







## Marble Falls Property, North Texas

- 11,695 Acres
- 66.67% WI

## Drilling Status

- 3 vertical wells drilled & completed
- 3 vertical wells licensed/permitted
- 2 vertical wells scheduled for drilling

## Highlights

- Pennsylvanian-age Limestone
- Oil-rich resource play
- Proven drilling success
- Shallow depths
- Low Drilling Costs
- High ROR

## Verba Field Property, Mississippi

- 10 wells
- Oil production
- 20% WI

## **Pennsylvanian Age Limestone**

The Company has acquired a 66.67% working interest in 11,695 acres of a oil-rich Pennsylvanian Limestone, located in the Forth Worth Basin, North Texas in the following counties; Young, Jack, Stephens, Montegue and Palo Pinto. Additional formation targets include the Atoka Conglomerates, the Caddo Limestone and the Mississippi Limestone (Chester Lime and Chappel Lime) These limestone formations are found at an average depth of 4,000ft-5,000ft, and 125ft - 300ft of gross pay thickness.

## **Overview**

Both the Marble Falls and the Mississippi Lime formations, are shallow and found in numerous counties within the Forth Worth Basin and in the same geographic area as the prolific Barnett Shale play in North Texas. Shorter horizontal sections, as well as some vertical completions, have been typically providing high production results, with low drilling and completion costs. Because of the limestone's porosity and natural fractures, expenses can total half, and even a fourth of the typical unconventional well efforts.

## **Reports**

Over 60 horizontal wells and vertical wells have been drilled with positive results; 300+ bbl/day in horizontal wells, and 150+bbbls/day of liquids gas in vertical well production. Recent reports of IP in Jack County, Texas is approximately 1,500 bbl oil equiv/day.

## **Majors in Area**

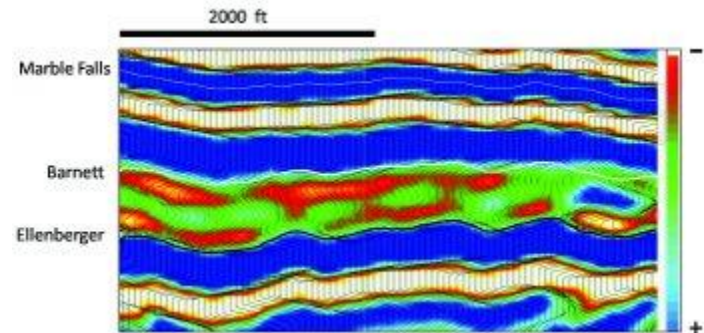
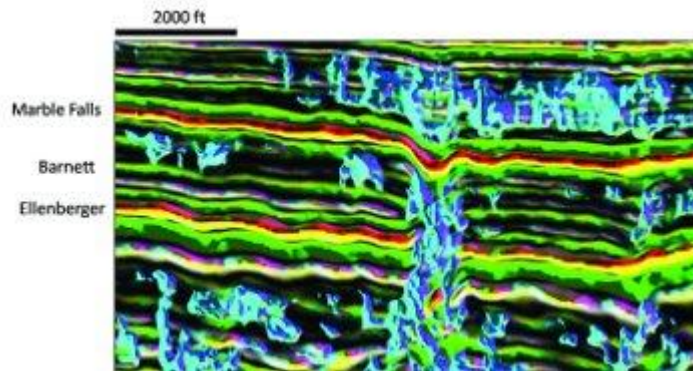
Currently, with over 2 million acres available in Marble Falls/ML resource plays, there has been a rapid movement of Majors focusing on developing and exploring these areas, as a result of wells promising an oil ratio of 50 percent, and low drilling costs/high rates of return. Since 2011, to date, Majors have acquired 1,039,220+ net acres of Marble Falls/Mississippi Lime (ML) and continue to increase acreage/drill locations, including the expansion of ML resource plays with successful "tight hole" wells distanced away from early "core" areas. Additionally, the drilling of ML resource play wells have an upside potential in the discovery of other prolific reefs and channel sands.

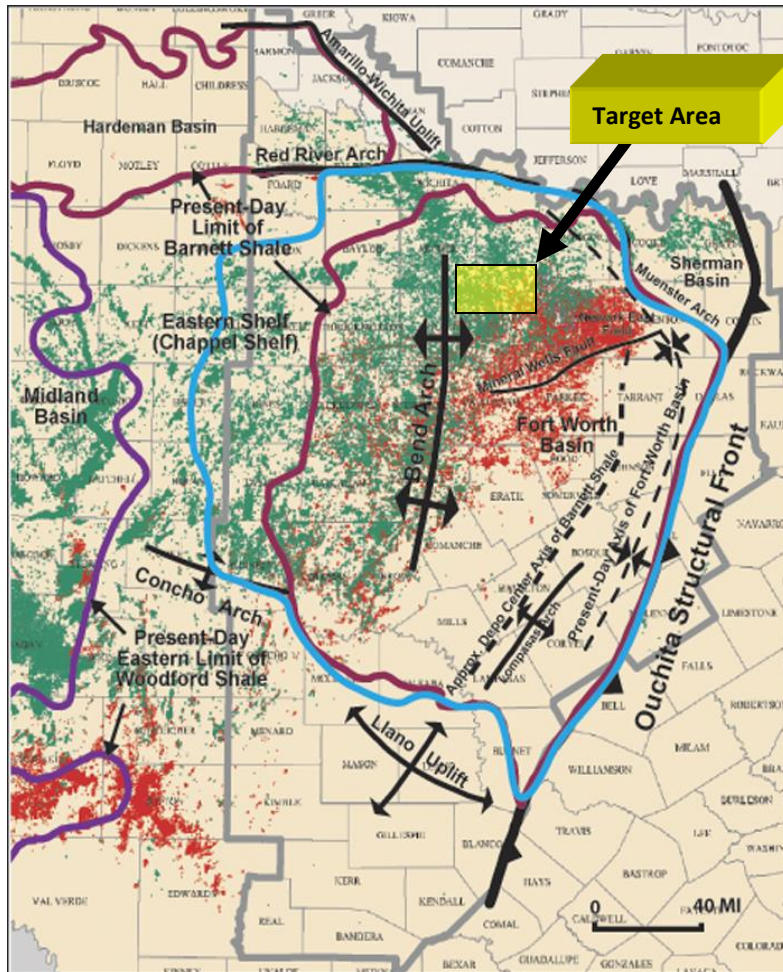


# Marble Falls Limestone Formation

The Marble Falls is an oil-rich Pennsylvanian-age porous limestone formation, that is deposited above the Barnett Shale and forms pinnacle reefs at depths less than 5000 feet, reaching a thickness of 400+ feet. These resource plays create the opportunity for large reservoir targets with massive hydrocarbon deposits within shoal basins, and have produced in excess of 400,000 BO per well.

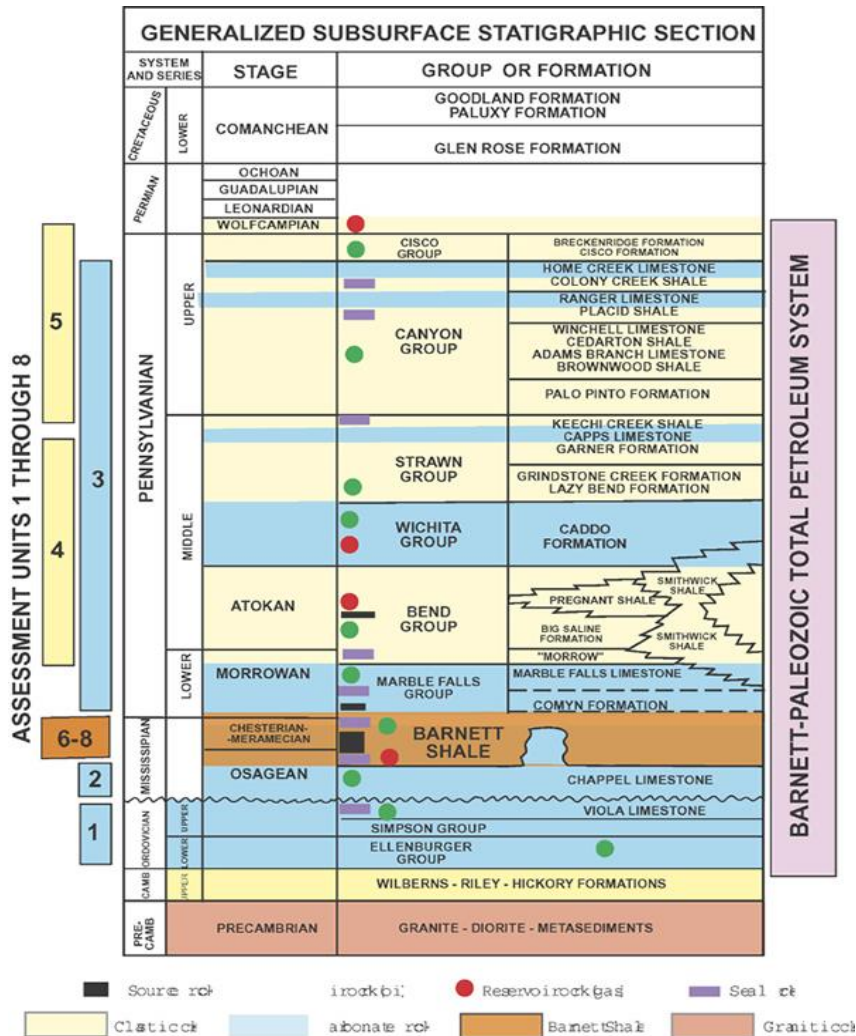
Limestone plays have produced approximately over 75,000+ BO in vertical wells, with great potential in horizontal wells to expose more reservoir rock and exponentially increase production capabilities. To date, over 300 Marble Falls resource play wells have been successfully drilled.





- Rapid development in Pennsylvanian-age Marble Falls Formation; similar to Barnett play
- Play consists of vertically fracturing of reservoir rock and horizontal boreholes
- Atokan sandstones and Conglomerates
- Migrations of Chestarian-age sediments derived from Ouachita fold belt - North Texas
- Approximately 450 feet of post-Barnett, Chestarian rock found in N.West, Fort Worth Basin – near Jack/Young County

# Subsurface Stratigraphic Section

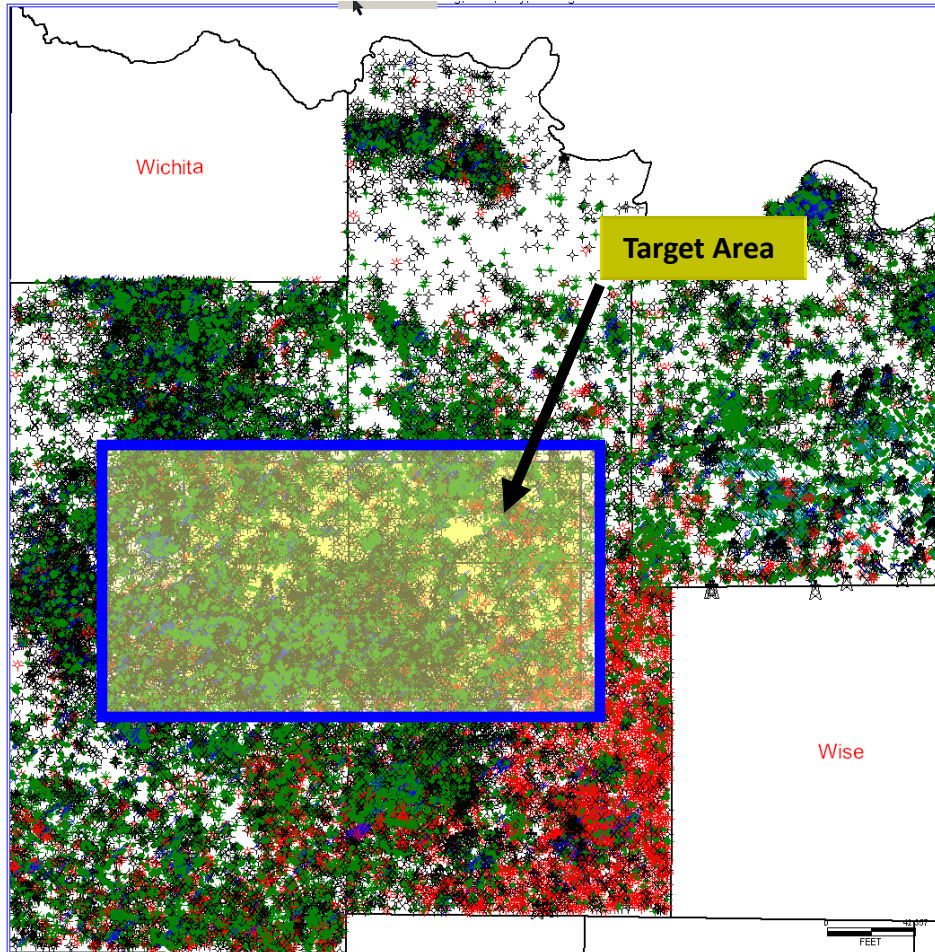


- Marine deposited limestone and numerous pinnacle reefs
- Two formations between the Atokan/Bend Conglomerates and the Barnett Shale
- Distinct sediments present of a Pennsylvanian formation (Marble Falls)
- Limestone platform varies from 125ft to 300+ft in thickness
- Additional targets – Caddo Limestone, and Mississippi Limestone (Chester Lime & Chappel Lime)



# Marble Falls Stratigraphic Column



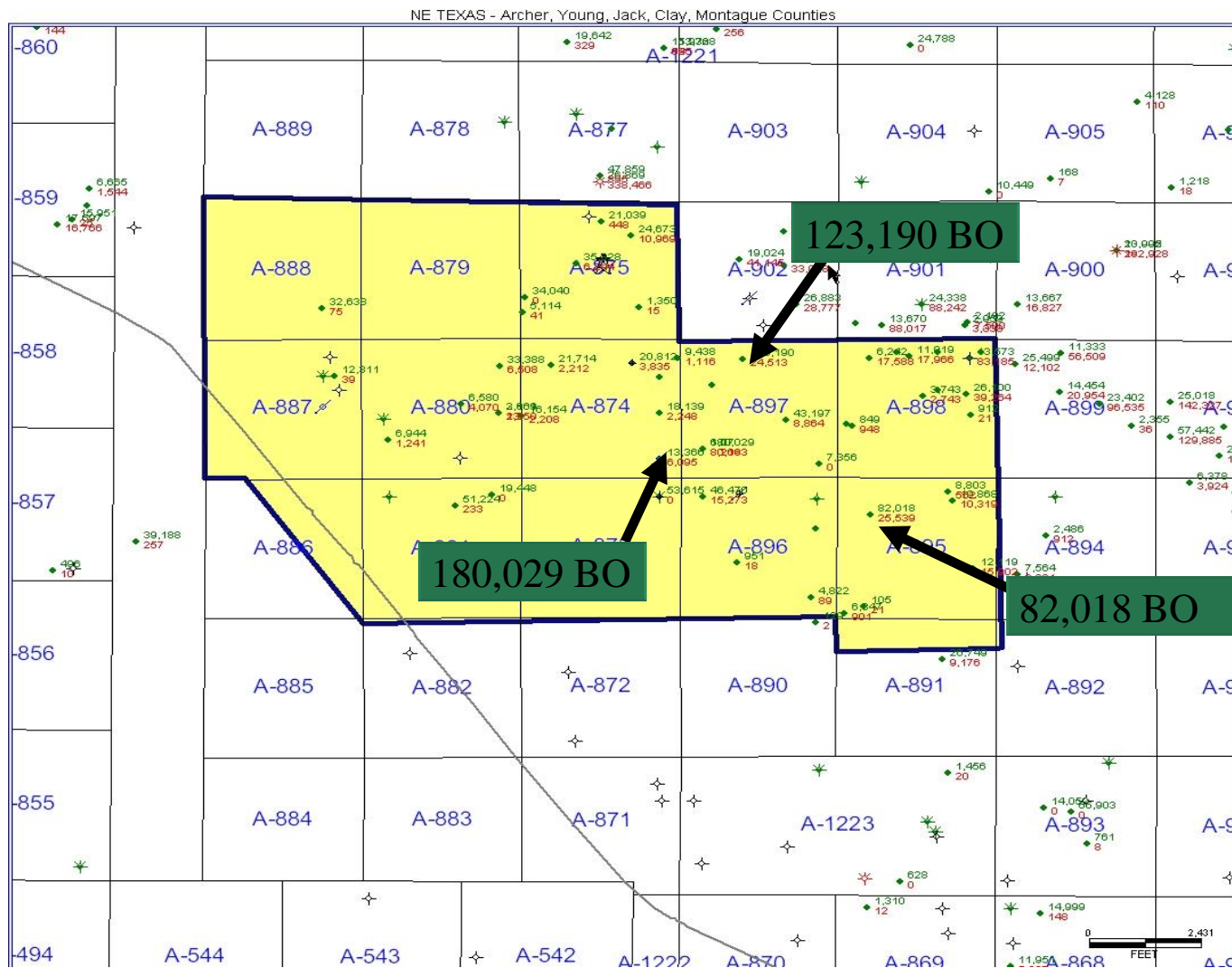


## Marble Falls, North Texas

Young, Jack, Stephens, Montegue and Palo Pinto Counties

- Majors rapidly developing area with successful results
- Recently, 60 vertical and horizontal wells drilled successfully
- 300+ successfully drilled wells in Marble Falls resource plays to date
- EOG Resources drilling and completing wells, recent production rates per well of approximately 700 BOEPD

# Young County Oil Production in Area

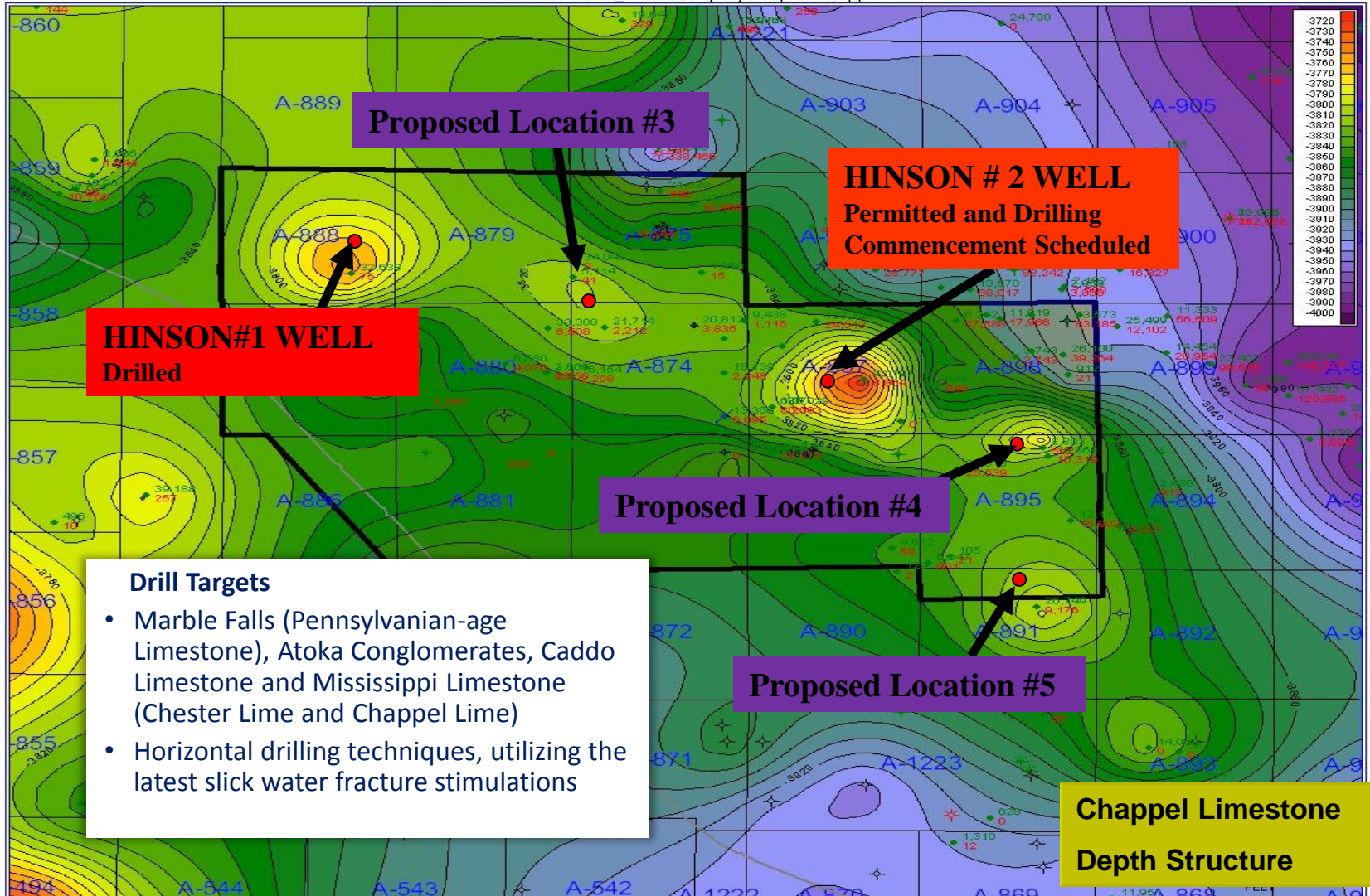




# Drill Target Areas - Young County



FMTOPS - TOP\_CHAPPEL [EH] - Top of Chappel

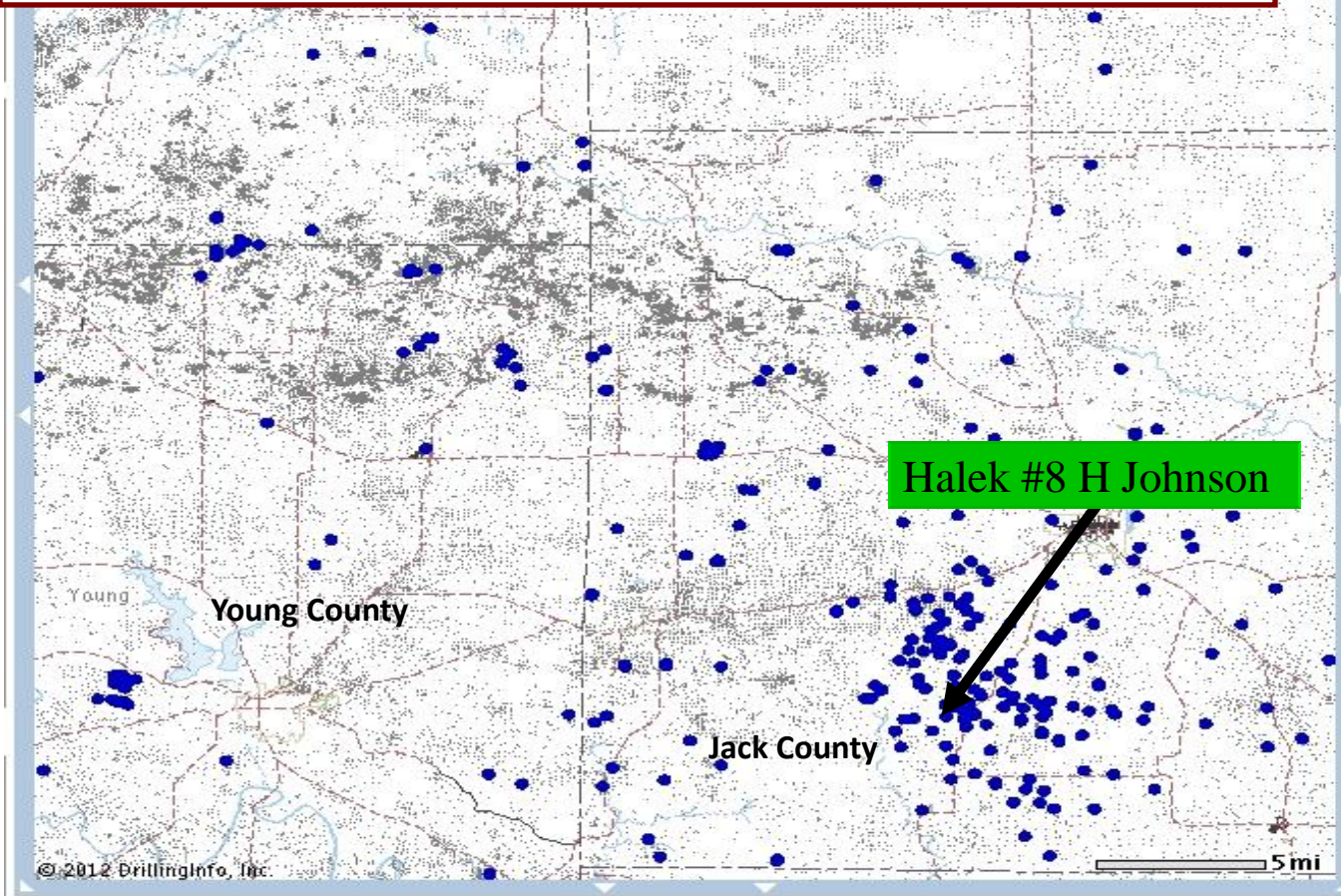




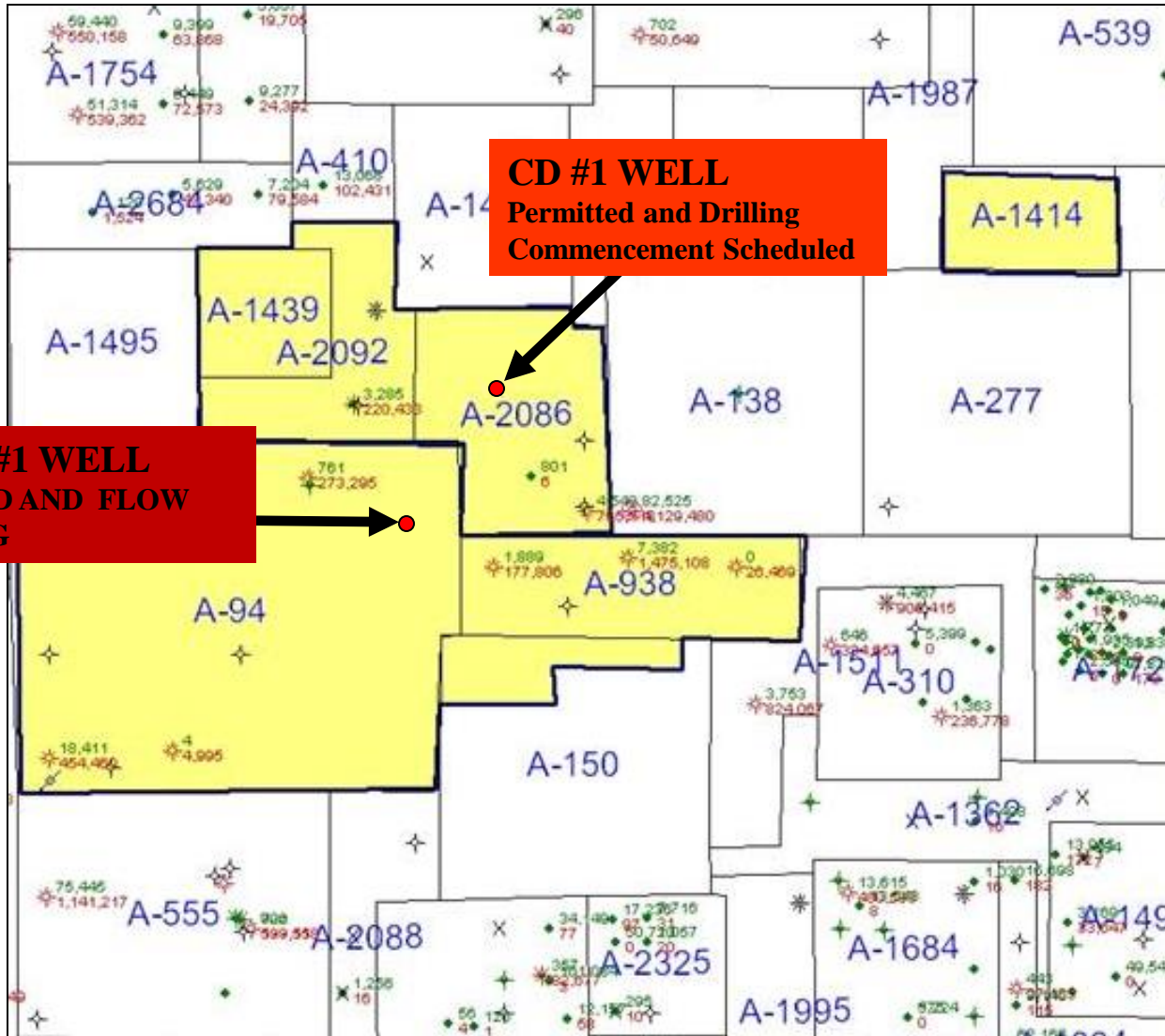
- **March 2014** - drilled and completed for production; drilled total depth of 5,200 feet (1,585 meters)
- showing significant hydrocarbons
- **May 2014** – currently being tested in multi zones to evaluate production capabilities for future wells



**JOHNSON 8H – horizontal well in the Halek (Caddo) formation  
recorded IP well test= 481 BOPD crude oil +1,814 MCFD natural gas.  
CURRENT CUMULATIVE PROD: > 96,880 BO  
> 687,185 MCFG**



# Drill Target Areas - Jack County



**CD #1 WELL**  
Permitted and Drilling  
Commencement Scheduled

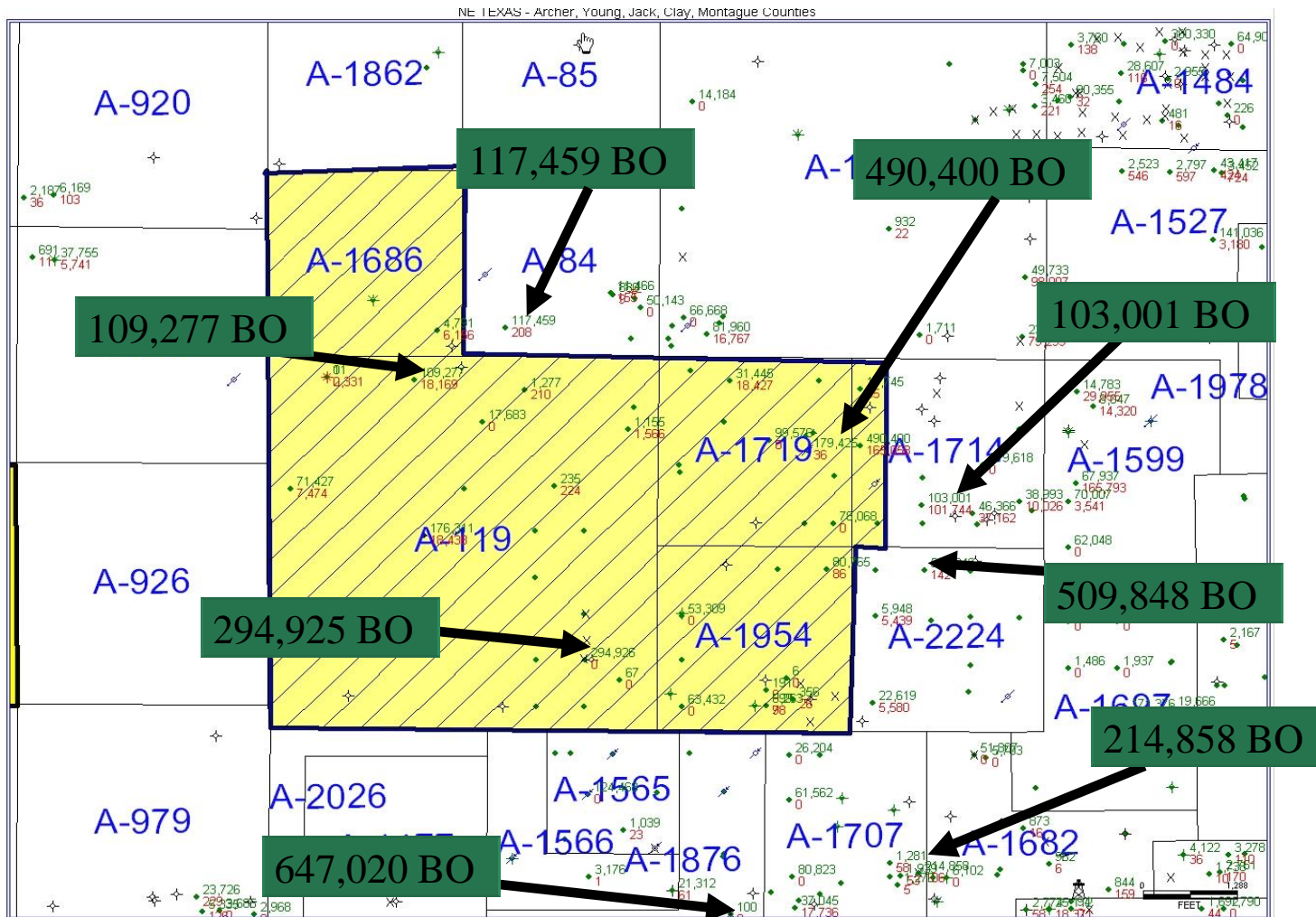
**COBB #1 WELL**  
DRILLED AND FLOW  
TESTING



- **December 2014** - drilled and completed for production; drilled to a total depth of 6,200 feet (1,890 meters) to test the Strawn Sands, Caddo Lime, Atoka Conglomerate, Marble Falls, Barnett Shale and Ellenberger zones
- showing significant hydrocarbons
- **January 2015** - Flow test results pending



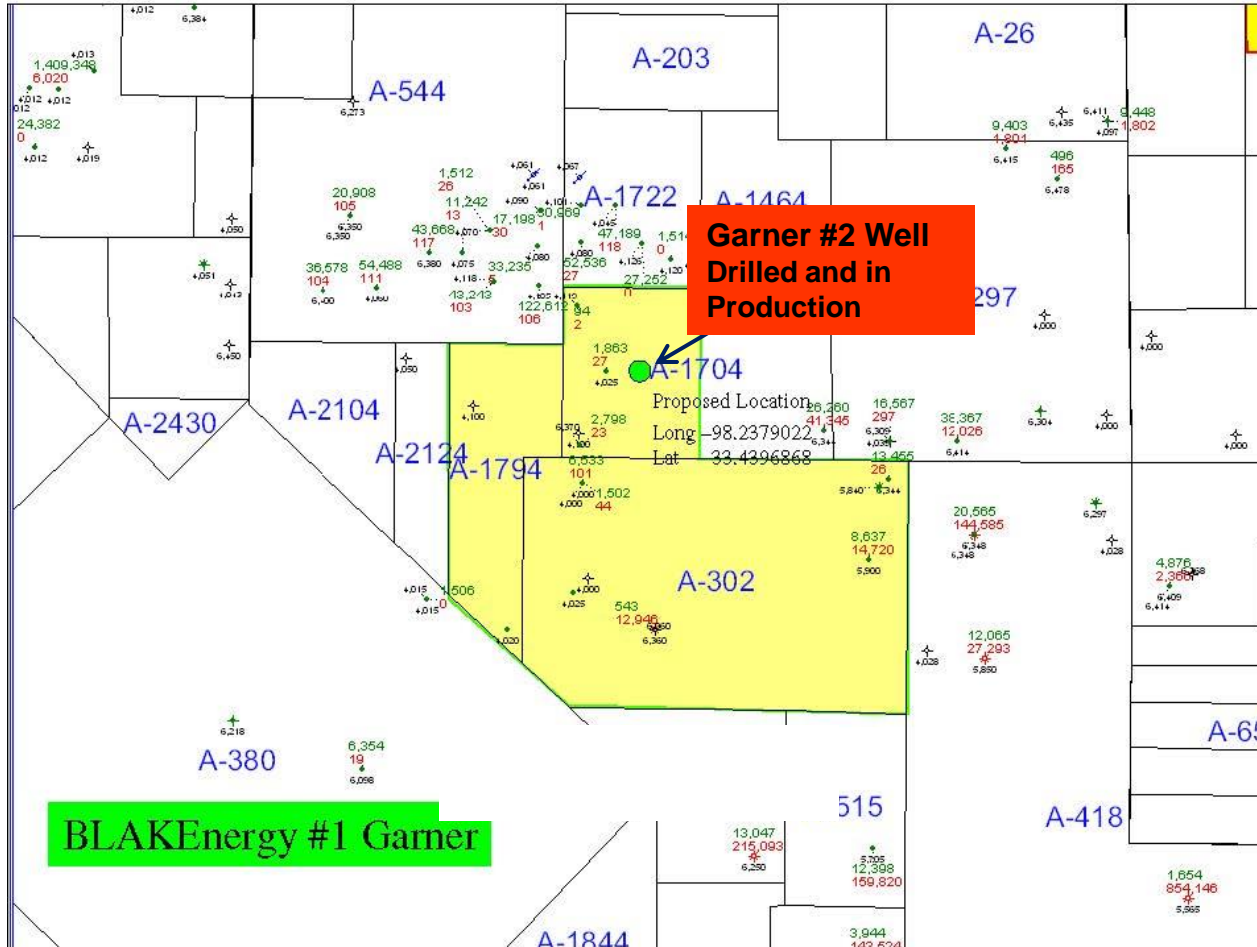
# Young County Oil Production in Area







# Proposed Location Garner #2 Well; Jack County





- **July 25, 2014** commenced drilling operations
- **August 7, 2014**  
Well drilled to a total depth of 6,350 feet (1935.8 meters) to test the *Strawn Sands, Caddo Lime, Marble Falls, Barnett Shale, and Ellenberger*
- **October 2014**  
Placed in production

# Verba Field Location Map



- ▶ 18.5% interest in Verba wells
- ▶ 10 wells on the property; 7 wells which are fully equipped oil wells
- ▶ Producing approximately 3500 barrels per month
- ▶ 3 wells with potential to be re-worked for more production



- 2 working interests
- Operational salt water disposal wells & mineral leasehold rights to majority of any known productive limits in the field



*Mississippi Oil & Gas Board Production Records show that Verba Field has produced approximately 2,500,278 barrels of oil through to December 2011 from eight formations.*

## Recent Success

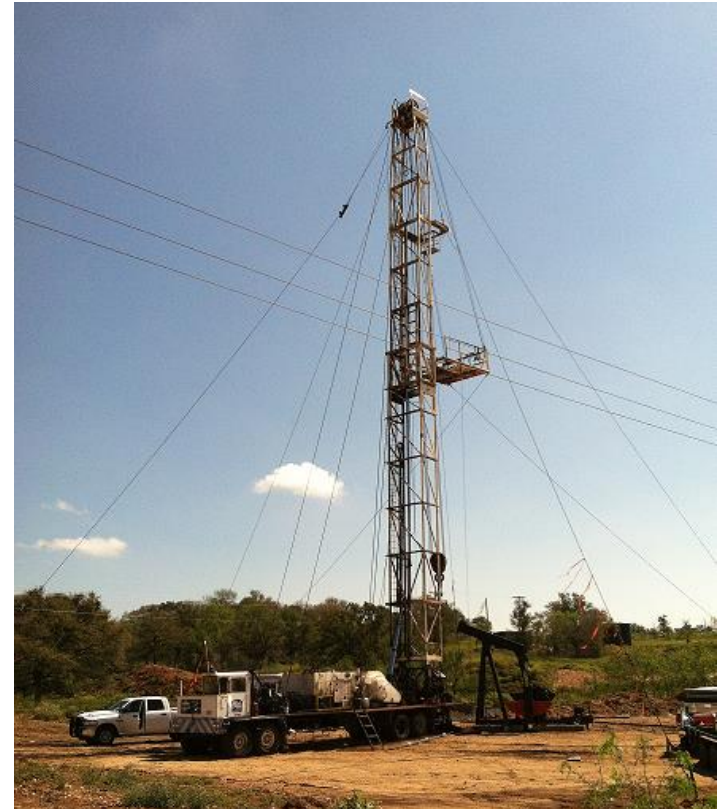
- Hinson #1 Well in production Q1, 2014 *(Completed)*
- Garner #2 Well in production Q3, 2014 *(Completed)*
- Cobb #2 Well Q4, 2014 *(Completed)*

## Near Term Targets 2015

- CD #1 Well scheduled for drilling Q2, 2015
- Hinson #2 Well drilled and cased, ready for completion Q2, 2015
- Cobb #1 Well licensed and permitted for drilling Q2, 2015

## Medium Term Targets

- Continue to expand acreage by 50%
- Drill three step-out wells between Q3 2015-Q4 2015
- Targeting 2100 BOP/day within 2-3 years





**Joe DeVries,**  
**President, CEO & Director**

- 20 years of experience financing public companies
- Currently a director of Altima Resources Ltd. and director of Precision Enterprises Inc

**Richard Barnett, CGA**  
**CEO, Secretary & Director**

- Over 20 years of accounting experience serving both public and private corporations
- Experience of a wide range of companies, including producing oil & gas, resource & explorations, engineering, and research & development

**Richard Switzer, P.Geol**  
**Director**

- Over 35 years of experience in the petroleum industry
- Currently President and CEO of Altima Resources Ltd.
- Previously at Texaco, Amoco, Skelly Oil Canada and Mesa Petroleum working for T. Boone Pickens
- Member of the American Association of Petroleum Geologists and a Professional Geologist with APEGGA

**Jurgen Wolf**  
**Director**

- Over 15 years of experience working with companies in the oil and gas sector
- Previously President of US Oil and Gas Resources, which amalgamated to form Odyssey Petroleum in 2005
- Currently a director of the following public companies; Petrichor Energy Inc, Iconic Minerals Ltd, and Transamerican Energy Inc

**David Blake, P. Geophysicist**  
**Technical Advisor**

- Over 29 years of experience in the petroleum industry
- Currently, President and CEO of BLAKEnergy, Ltd. & BLAKEnergy Operating, L.L.C.
- Success rate of 75% in developing commercial production for top quality oil and gas prospects
- Involved with 52 companies which have successfully been brought in prospects, including; Mobil, BHP, Texaco, Devon, Chevron, Arco, and Amoco, amongst others
- Member of the Society of Exploration Geophysicist and Geophysical Society of Houston



**Head Office:**

Suite 303 – 595 Howe Street  
Vancouver BC Canada V6C 2T5  
Tel: 604.718.2800  
Fax: 604.718.2808

[www.petrichorenergy.com](http://www.petrichorenergy.com)

**TSX-V Listed:** PTP

**US OTC-BB:** ODEFF.PK

**Frankfurt / Berlin:** YQNP

**CUSIP:** 71643U107

**Auditors:**

Dale Matheson Carr-Hilton Labonte  
1140 Pender Street  
West Vancouver, B.C. V6E 4G1

**Legal Council:**

DuMoulin Black LLP  
10<sup>th</sup> Floor, 595 Howe St.  
Vancouver, B.C. V6C 2T5

**Engineering Firm:**

Fletcher Lewis Engineering Inc.  
Penn Park Office Center  
5001 N Pennsylvania #300  
Oklahoma City, Oklahoma 73111