

Welcome to  
beautiful Norfolk

Premier Self-Catering  
Holiday Accommodation



Open All Year  
Pets Welcome  
Free Bed Linen



# Welcome to Blue Riband Holidays

For availability and bookings call: **01493 730445** or **732943**

## Contents

- 03 Sea-Dell Holiday Park in Hemsby
- 04 Belle Aire Holiday Park in Hemsby
- 06 Hemsby Self Catering Bungalows
- 07 Parklands Holiday Centre
- 12 Coastal Properties in Caister & Scratby
- 14 Useful Information
- 15 Out & About in Beautiful Norfolk

## PETS WELCOME

Your dog is part of your family and is made welcome at all our accommodation featured in this brochure.

Please see our price list for charges for your pet, maximum two pets, small to medium breeds during school holiday periods. We respectfully ask that you clean up after your pets and don't leave them for long periods unattended in your holiday home.



### Our booking office

Situated at Parklands, off North Road, Hemsby, NR29 4HA. Just past the medical Centre on the right. Collect your keys, leaflets on places to visit. Open all year round. Full details on how to book, our cancellation plan & conditions of hire can be found on our price list.

### Smoking

The majority of our customers are non-smokers and find the odour left, particularly by a heavy smoker, to be a problem. We therefore respectfully ask that, if you do smoke, you do so outside your holiday home. Most of our regular customers already do this and for this reason we have classified all our accommodation as non-smoking.

### Mobility Scooters

Are not permitted inside the accommodation because of the damage caused to UPVC thresholds. You may keep your mobility scooter outside, however, you are responsible for the safekeeping of the scooter.

### Bed linen included in the cost of your holiday

All accommodation supplied with a duvet cover, bottom sheet and pillow cases for each bed being used (up to number of beds in a bungalow) (up to four persons in a two bedroom chalet or five persons in three bedroom). A hire service form is available on request for items for hire i.e. cots, pushchairs, beach chairs, windbreaks etc.

**ALL OUR BUNGALOWS HAVE** a fully fitted kitchen, electric cooker, fridge/freezer, microwave, kettle, iron, upright vacuum cleaner, iron & ironing board. Fully equipped with crockery, cutlery & cooking utensils.

## Blue Riband Holidays offer great-value self-catering holiday chalets and bungalows in the Norfolk villages of Hemsby, Caister and Scratby.

Get-away-from-it-all short breaks and holidays for families where your dog is welcome too.

Some holiday homes are on popular chalet parks, with facilities, others are in more peaceful locations and we pride ourselves in having something to suit everyone's taste.

Our quietly-situated premier bungalows are residential quality and some have their own private gardens. All chalets are within easy reach of some of Norfolk's gorgeous sandy beaches.

Blue Riband has more than half a centuries experience in providing superb live-as-you-please holidays at fantastic prices, supported by the high-quality service of a family-run business.



# Sea-Dell Holiday Park in Hemsby



## All Chalets have:

- Comfortable lounges, with TV and DVD player, dining table and chairs, coffee table and electric heater.
- Shower-rooms with electric shower, washbasin and toilet. No bath.
- Fully equipped kitchen areas with electric cooker, kettle, toaster, iron and upright vacuum cleaner. All have a fridge/freezer and a microwave.
- One double bedroom & one twin bedroom.
- All bed linen supplied.
- Wardrobes and drawer units.
- Electricity by £1 coin meter.
- Pets welcome: maximum two pets, small to medium breeds.

## Sea-Dell Holiday Chalet Park's appeal is clear the moment you arrive.

Our detached self-catering chalets are generously spaced in a large and attractive parkland setting, with an abundance of trees. Each property has parking directly outside.

The park is very safe for children and pets and there is ample space to walk your dog.

Sea-Dell offers real quality for visitors seeking the tranquillity of a holiday away from the hurly burly, although Beach Road, with all its attractions, is just a few minutes walk away.



## Some of the many attractions of Hemsby and surrounding area.

One of the top resorts in the country offering something for everyone. Magnificent beaches for sea-bathing, sand castles or soaking up the sun.

There is every kind of attraction: Minifunfair, amusement centres with the latest video games and prize bingo. Takeaways, all kinds of shops, gifts & souvenirs and a pharmacy. Mr. B's Leisure bar offers three full size snooker tables, several pool tables, large satellite TV and children's soft play area.

Evening entertainment includes: Sea-Dell Club (not on Sea-Dell Park, situated on St Thomas's Road approx 200 yards away), also you can use "Club Belle" on the Belle Aire Park also adjoining Sea-Dell. These locations have free membership for Blue Riband guests.



# Belle Aire Holiday Chalet Park

## Our Belle Aire self-catering chalet park

is on Beach Road, Hemsby, just a short stroll from the village's golden sands and attractions. There is a children's playground to keep youngsters amused and all visitors receive free Club Belle membership. Guests are also welcome to use the facilities at our nearby Parklands Holiday Park.

We have two types of self-catering chalets. The **Bure two-bedroom chalet** and the **Wensum three-bedroom chalet**.

## Both Chalets Types Include:

- Comfortable lounge with TV and DVD player
- Shower room with washbasin and toilet
- Fully equipped kitchen areas with electric cooker, microwave, kettle, toaster, iron and upright vacuum cleaner. The Wensum has a fridge freezer & the Bure has a fridge with ice box
- Hot water heaters
- Electricity supplied through a card meter, taking £1, £5 or £10 cards purchased from reception
- Pets are welcome
- Bed linen provided
- Wifi available (fee charged)



## Bure 2 bedroom Sleeping 4 - (see terms A)

- One double and a twin room
- An extra child sometimes possible, see price list for details



## Wensum 3 bedroom Sleeping 5 - (see terms D)

- Two double and single bedroom



## Belle Aire Attractions:

- Club Belle (free membership)
- Cabaret Acts
- Cash Bingo
- Disco & Karaoke
- Children's Adventure Playground

## The many attractions of Hemsby-on-Sea

Hemsby is situated just six miles north of Great Yarmouth and is today one of the most popular holiday locations on the east coast. On Beach Road close to the Belle Aire Park you have many attractions: Takeaways, restaurants, shops, amusements, prize bingo, children's minifair, Sunday and Tuesday markets, the Lacon Arms P. H. Only a short walk away on St Thomas' Road you will find the very popular Sea-Dell clubhouse which has some entertainment and is free to use. On Beach Road you'll find Mr B's Leisure Bar with three full size snooker tables, pool tables and large satellite TV and children's soft play area.

Great Yarmouth is only six miles, a comfortable 10 minutes in the car or buses run regularly. Live shows and entertainment, Yarmouth racecourse, Greyhound and Stock-car racing, Pleasure Beach with white knuckle rides for teenagers and the popular "Joyland" for younger children. Norwich is only 20 miles, a fine shopping centre and many historical buildings. The Norfolk Broads are within easy reach, day boats can be hired by the hour, half day or full day, plus many guided tours are offered. (leaflets on broads tours are available in our reception).

## All Blue Riband Guests staying at Belle Aire or Sea-Dell

(page 3) are welcome to visit our main holiday centre at Parklands and take advantage of our super facilities. The miniature railway, mini-golf, table tennis, kiddies playground with picnic area, and our weekly Barbecue and fun evening (weather permitting - only main 6 weeks holidays), a great chance to meet all the family. Laundrette for your use.

## Club Belle

offers a variety of Entertainment for all the family. Take your seat early for cash bingo. Cabaret nights, theme nights, Miss Club Belle etc. Great value meals. See club board for details.





### 34 Meadow Rise, Hemsby (see terms G)

- Semi-detached, three bedrooms, sleeps five.
- Front garden and fully enclosed rear garden.
- Off road parking for up to two cars.
- Comfortable lounge with separate dining area.
- Two bedrooms with double beds, third bedroom with 3ft single bed.
- Ample wardrobe and drawer space.
- Kitchen.
- Bathroom with electric shower over bath.
- Hot water immersion heater.
- Oil-fired central heating for 7 hours a day, price on request.
- Free wifi.
- Pets welcome, one medium or two small dogs only please.



### 1-6 The Laurels - St Thomas Road, Hemsby 1, 2, and 3 bedroom bungalows. (See A, C and F terms)

- Six quality bungalows set in a quarter of an acre of land.
- Close to attractions on Beach Road and the beach.
- Private car park in full view of all bungalows.
- Comfortable lounge and well-equipped kitchen.
- Shower room with washbasin and separate toilet.
- All bedrooms have a wardrobe and dresser.
- Hot water by immersion heaters and heating by convector heaters.
- Pets Welcome.
- Wifi Enabled.

One-bedroom sleeps two people in one double bedroom.

Two-bedroom sleeps four with one double bedroom & one twin.

Three-bedroom sleeps six with two double bedrooms & one twin bedroom.



The Lacons Arms Public House (above) for a superb Sunday carvery, and the Beach Cafe are two freindly venues offering great value meals.

### Hemsby is situated just six miles north of Great Yarmouth and is today one of the most popular holiday locations on the east coast.

On Beach Road close by you have many attractions: Take-aways, restaurants, shops, amusements, prize bingo, children's mini-funfair, Sunday and Tuesday markets. Only a short walk away on St Thomas' Road you will find the very popular Sea-Dell clubhouse which has some entertainment and is free to use.



# Parklands Holiday Centre



### On-site amenities include:

- Reception
- Free wi-fi
- Hire Shop
- Laundrette
- Miniature railway
- Kiddies corner
- Recreation area
- Picnic area
- Mini golf
- Pool table
- Weekly Barbecue during school holidays

Within easy reach of Parklands are quiet, unspoilt sandy beaches where you can walk for miles, enjoying the sea air and beautiful coastal scenery. Also close by are the bustling holiday beaches so popular with families.

Our centre has 16 large, generously-spaced detached bungalows, set in four acres of quiet parkland. There is an excellent large play area for children with covered area for table tennis, pool table, table football and much more. All bungalows have an outside table and chairs.

People of all ages also love our miniature railway.

Great Yarmouth is a ten-minute drive away and the Broads are right on your doorstep for a boating, fishing, birdwatching or sightseeing. The historic city of Norwich is only 20 miles away and beautiful north Norfolk is within easy reach for an interesting day out.

Parklands is in Hemsby village centre, just a few minutes walk from a well-stocked Co-op supermarket, butchers, bakers, takeaways, hairdressers and a pharmacy. You'll find a medical centre and dentist on North Road and Hemsby post office is a short walk away.





**Barbecue Evening** We have a weekly barbecue in school holiday periods during the Summer months (weather permitting) usually on a Tuesday evening. We cook while you relax and make new friends in our picnic area. No need to worry about the youngsters as they enjoy the superb children's play area plus train rides. Full details from Parklands reception. We usually have a train running during our Bar BQ evening.



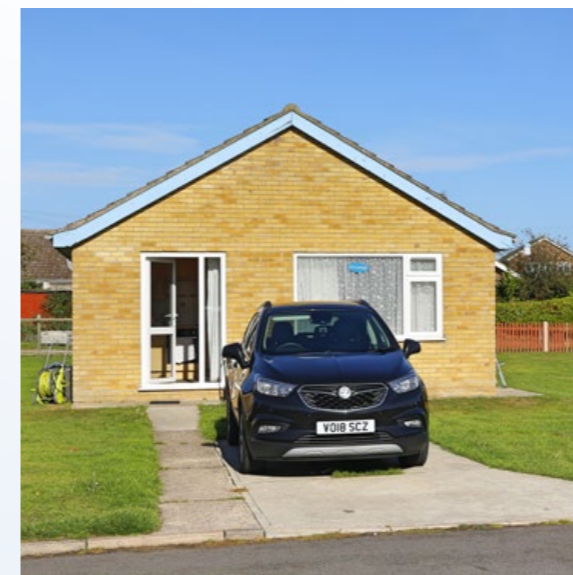
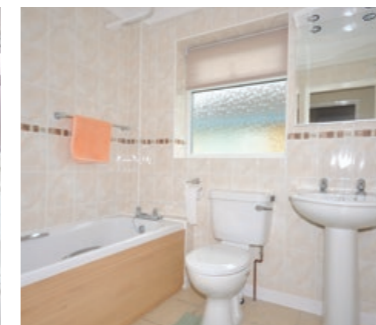
### Blue Sandy (see terms H)

- Detached, three bedrooms, sleeps six.
- Facing south with patio, table & chairs.
- Access from North Road via tarmac drive with turning space and garage.
- Large lounge with satellite TV, dining room, double doors to the dining room.
- Kitchen with fridge/freezer, microwave.
- Double master bedroom with TV and en-suite with large walk-in shower.
- Second double bedroom and a third bedroom with twin beds.
- Main bathroom with walk-in shower, bath, washbasin and toilet, heated towel rail.
- Four night-store heaters, fan heaters, free standing electric fire.
- Electricity by digital meter, £1 or £2 coins.



### Blue Harmony, Blue Melody, Blue Caroline, Blue Heather, Blue Safari, Blue Miami, Blue Haze, Blue Haven, Blue Claire and Blue Julie (see terms F)

- Detached bungalows, three bedrooms, sleeps six.
- Two double bedrooms & one twin bedroom.
- Generously spaced with maximum sunlight.
- Comfortable lounge with dining suite, TV and DVD player.
- Modern fitted kitchen with fridge freezer and microwave.
- Electricity by £1 coin meter.
- Bed linen included.
- Bathroom with electric shower over bath (Blue Harmony, Caroline and Haze) walk-in shower enclosures only in Blue Melody, Heather, Safari, Miami, Haven, Claire & Julie.



### Blue Charm and Blue Sapphire (see terms G)

- Detached, three bedrooms, sleeps six.
- Bath and separate shower enclosure in Blue Charm and shower over the bath in Blue Sapphire.
- Wall mounted TV in main double bedrooms.
- Same sleeping arrangements as Blue Haze and Blue Haven, but slightly larger.



### Blue Pines (see terms F)

- Two bedrooms, sleeps five to six.
- Bedrooms have a double bed with a single z bed for the 5th/6th person.
- Bathroom with shower, no bath.





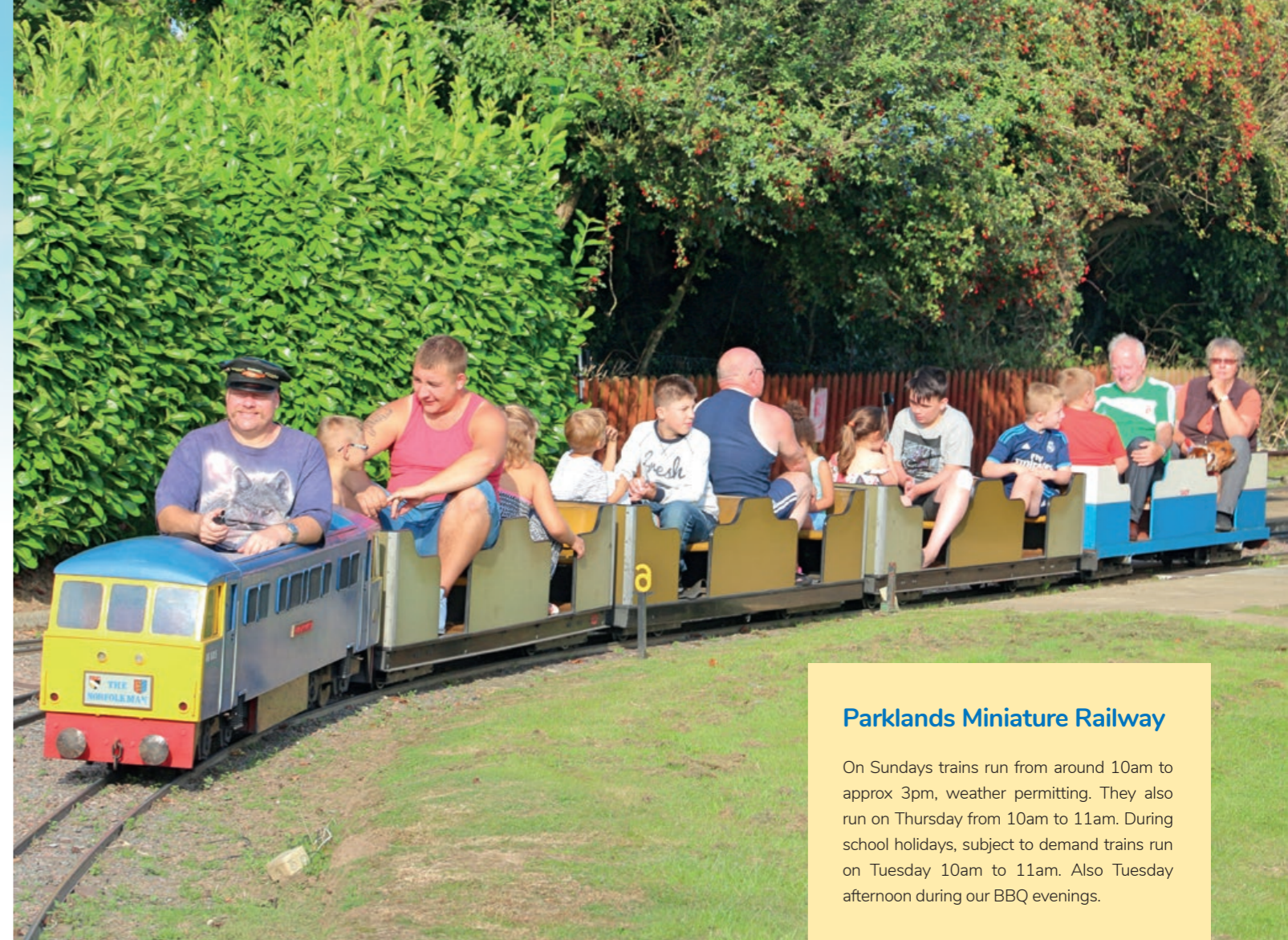
## Blue Gardenia (Terms G + £50 mid May - Oct) (Terms G + £30 all other dates)

- Four-bedroom extended property adjoining Blue Dell, sleeps six.
- Large lounge with TV and DVD player.
- Kitchen, utility room with washing machine and freezer.
- Separate dining room.
- Patio doors leading to an enclosed garden.
- Twin and double bedrooms upstairs. Double and single bedrooms downstairs. All with ample wardrobes.
- Bathroom with shower, bath, wash basin and toilet, and a separate toilet.
- Hot water by immersion heater.
- Oil-fired central heating for seven hours, price on request, please order in advance. Also, electric heaters.
- One medium or two small dogs only please.



## Blue Dell (see terms F)

- Two bedrooms, sleeps five.
- Double bed in both bedrooms, Z bed for 5th person.
- Bathroom with shower, no bath.
- Fully enclosed Garden.
- Car parking on the drive.



### Parklands Miniature Railway

On Sundays trains run from around 10am to approx 3pm, weather permitting. They also run on Thursday from 10am to 11am. During school holidays, subject to demand trains run on Tuesday 10am to 11am. Also Tuesday afternoon during our BBQ evenings.

You'll also be able to enjoy our children's corner, picnic and barbecue area, crazy golf, launderette and hire shop.

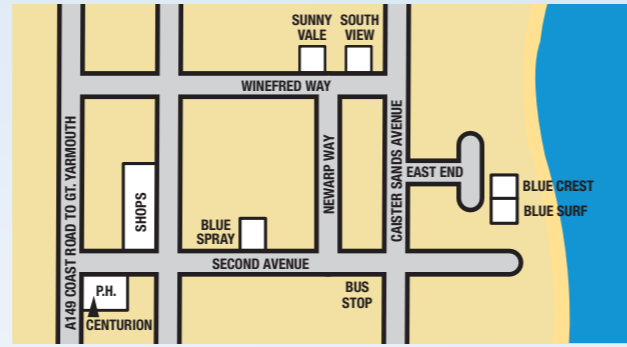
Pets are welcome at Parklands, maximum of two pets, small to medium breeds only.

## Heating

All properties have a large night-store heater in the lounge and a smaller one in the main bedroom. Some have a third heater. All have a free-standing electric fire in the lounge and a wall-heater in the bathroom. See the price list for more details. Prices vary on each property. Each bungalow has free WiFi.



## Coastal Properties at Caister-on-Sea, Blue Mist at Scratby



### Some of the local attractions and amenities in the Caister area.

- Close to the lovely beach.
- Ideal for beach fishing and walking your dog.
- Frequent bus service into Great Yarmouth.
- Centurian public house with children's room and playground.
- Local shops nearby and a Tesco store in Caister Village.
- Caister Castle and Motor Museum, Yarmouth Stadium for greyhound & stock-car racing. Golf course and riding stables.
- Only 3 miles from Great Yarmouth for live shows and many attractions.



### Blue Mist

- 10 Nightingale close, Scratby  
Self-Catering Bungalows - Scratby  
(see terms G)



- Three bedroom detached, sleeps six.
- Two bedrooms with double beds and third with two singles.
- Main double bedroom has a wall mounted TV.
- Bathroom with shower over bath.
- Off road parking for two cars.
- Fully enclosed rear garden complete with garden table and chairs.
- Pets welcome: maximum two pets small to medium breeds please.
- Night store heater in lounge and two bedrooms (see price list for charges).
- Open plan lounge diner, kitchen.
- Flat screen TV with DVD player.
- Full size fridge freezer.
- Electricity by coin meter.



## Coastal Properties at Caister-on-Sea



### Sunny-Vale (see terms G) and South View (terms G +£30) 68 & 72 Winifred Way, Caister-on-Sea

Both are semi-detached with three bedrooms. Two double bedrooms and one single room sleeping 5.

- Modern fitted kitchen with full size fridge/freezer. South View has an under counter fridge and freezer, washing machine and dining area.
- Comfortable lounge with dining suite, widescreen TV and DVD player. No 72 has an extended lounge raised decking and a conservatory.
- Both bungalows have a wall mounted TV in main bedroom.

Quietly situated spacious bungalows, views across the fields. Safe parking for two cars. Safe for children and pets



- Bathroom with shower over bath in No 68.
- Walk in shower enclosure (no bath) in No 72.
- Enclosed rear garden plus garden table & chairs.
- Parking for two cars.
- Both have electric night-store heaters plus free standing convector heaters.
- One medium or two small dogs only please.
- Hot water by immersion heater.
- Electricity by coin meter.
- Ample wardrobe & dressing tables, all beds with duvet & pillows, bed linen included.



### Blue Spray - 16a Second Avenue

Self-Catering Bungalows - Caister-on-Sea  
(see terms G)

- South-facing detached bungalow, three bedrooms, sleeps six.
- Comfortable lounge with widescreen TV and DVD player.
- Two double bedrooms, one twin bedroom. All beds have duvet & pillows, all bed linen included, ample wardrobe and drawer space.



- Kitchen, bathroom with shower cubicle, washbasin and toilet.
- Parking space.
- Fully enclosed rear garden with garden table and chairs.
- Electricity by coin meter.
- Heating: night store heaters in lounge and two bedrooms, free standing convector heaters. Wall heaters in kitchen and bathroom.

## Some useful information to help your holiday run smoothly

### Doctor's Surgery

For Hemsby and Scratby please go to the 'Medical Centre' on North Road, Hemsby (near Parklands) tel. 01493 730449, this is also the out-of-hours number. The health centre also includes a dentist tel: 01493 732433 (evening 01493 662673, weekend 01493 662973), Caister area, The health Centre on Branford Road 01493 720618.

### Hospital

James Paget, Lowestoft Road, Gorleston. Tel 01493 452452.

### Vets

Caister Vets, Tel 01493 809766. The Anchorage at South Walsham Road, Acle Tel 01493 750255. Also Haven Vet Surgery, Queen Annes Road, Great Yarmouth Tel 01493 416700.

### Great Yarmouth and Caister Golf Club

This lovely links course is very handily placed for all our holiday accommodation and Blue Riband guests will be made very welcome. For prices for a round of golf etc. please call 01493 728699 or email office@caistergolf.co.uk. The golf course would request that all visitors conform to their dress code which is 'smart attire suitable for the game of golf'. In simple terms no jeans, football shirts etc.

### Mr. B's Leisure Bar

Beach Road, Hemsby. Full size snooker tables, pool tables and large screen satellite T.V. Children's soft play area.

### Eating out locally

You will be spoiled for choice, there are dozens of places to visit all offering value for money meals. The Kings Head Public House, North Road, Hemsby is the closest venue. Lacons Arms on Beach Road for fantastic Sunday carvery. Moments Restaurant at Scratby. Filby Bridge and many more. In addition there are many take-aways with fish & chips, chinese, Village Pizza and an excellent Indian restaurant in Ormesby and a host of fast food outlets. For Caister there is the Castle carvery and restaurant. Please ask us for directions to any of these places.

### Thursford Collection

A fabulous day out for all the family. Come and see the world's largest collection of steam engines and organs, hear Robert Wolfe one of the worlds leading theatre organists play the mighty Wurlitzer, ride on fairground carousels and the gondola, enjoy 'Behind-the-Scenes' tours and watch silent movies. Lunch in the barn and shop in our olde worlde shopping village. And our fantastic play area has plenty to delight children of all ages.

### IMPORTANT:

At Blue Riband we have tried not to have too many do's & don'ts. But please turn to the back page of our price list for the conditions of hire we feel are important and for full information on our Cancellation Plan. Please read the information very carefully. All information correct at the time of printing.

## Out & About in Beautiful Norfolk



### Britannia Pier

Fantastic live shows.

### Marina Centre

Swimming pool, wave machine, indoor bowls and sports facilities.

### Free weekly firework displays

### Joyland

For the younger children.

### Pleasure Beach

For the more adventurous, over 70 rides, sideshows and attractions.



### Over 15 miles of golden sandy beaches

### The splendour of the Norfolk broads

Right on your doorstep. The main centres of Potter Heigham, Horning, Wroxham and Ranworth are all within easy reach. You can watch the boats while enjoying a leisurely drink, or hire a launch and cruise the broads. Boats can be hired by the hour, half-day or full day. There are also lots of organised broads tours.

### Great Yarmouth Races

Up to 22 meetings during the season, please see back of our price list for the dates.

### Yarmouth Stadium

With greyhound racing all year round, stock car and banger racing during the Summer season.

### Norfolk Shire Horse Centre

Live animal shows & feeding fun throughout the day, children's farm, picnic area, souvenir shop.

### Redwings Caldecott Visitor Centre

Near Great Yarmouth makes for a perfect free family day out - with an interactive Horsewise education area, horse care demonstrations, children's play area, Nosebag café and 70 acres of paddocks to explore - there really is something for everyone!

### Pleasurewood Hills American Theme Park

Your biggest day out ever, 50 acre park, indoor & outdoor attractions. Fun for all the family, free use of picnic and Barbecue facilities.

### Dinosaur Adventure Park

Lenwade near Norwich, where adventures run wild. Discover creatures great and small. Do you think it's time you came-n-saurus.

### Pettitts Animal Adventure Park

Set in attractive rural surroundings with pleasant walks among the peacocks and other species. Children can feed the goats, children's rides, shows and superb adventure playground.

### Wroxham Barns

Is a delightful collection of beautifully restored 18th century barns, set in 10 acres of Norfolk countryside. Here you will find traditional crafts in a rural setting, together with fun attractions for all the family.

Leaflets on these and many other places to visit are freely available, some with discount vouchers, from our reception at Parklands Holiday Centre. Buy discount tickets for some locations.

## Great Yarmouth, the jewel of the East Coast with something for everyone

### Bure Valley Railway

Norfolk's longest Narrow Gauge and Heritage Railway. Aylsham to Wroxham a great day out for all the family, under 5s travel free.

### North Norfolk Railway

The Poppy Line situated at Sheringham. Steam locomotives, historic rolling stock and model railway on view. Another great day out.

### Caister Castle & Motor Museum

Probably the largest collection of motor vehicles dating from 1893 to the present day.

### Thrigby Hall Wildlife Gardens

Home to a host of Asian animals, including the magnificent Bengal Tigers, monkeys, alligators etc. Walk in the exciting Forest House to enjoy colourful birds and experience the feel of the jungle.

### Hemsby & Winterton dunes

A lovely sheltered area, great for walking your dog, safe for children, no roads, no traffic and the beach just beyond. Other great dog walking locations include Caister to California.



### Great locations to go fishing

You can fish from the riverbanks, several fishing lakes Golden Pond Hickling, Holly Farm Acle, Martham Pits, to mention but a few there are many more. Beach fishing is also very popular. More information on both fishing venues and places to walk your dog can be found in our reception at Parklands.





Live-as-you-please, inexpensive holidays by the sea in Hemsby, Scratby and Caister near Great Yarmouth and the Norfolk Broads



Direct Line Booking: 01493 730445 / 01493 732943

[www.blueribandholidays.co.uk](http://www.blueribandholidays.co.uk)