

growingnews

WINTER 2015/16


- 02 York University in Bloom
- 02 New soil site in South Yorkshire for Green-tree
- 03 Green-tech supply rural tree planting products
- 03 Award Success for Green-tech
- 03 Meet the team
- 04 Conservation bat boxes launched
- 04 Green-tech sponsors Frankie
- 04 Welcome to Sarah, Laura, Josh and Sam

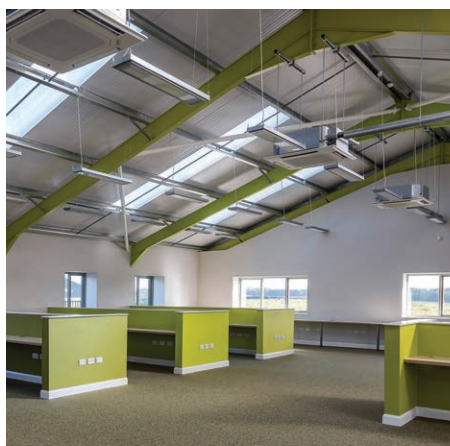


We're in!

After years of planning and months of building we have moved into our new home at Rabbit Hill Park.

Friday 13th November saw the Green-tech team arrive lock, stock and barrel to the new premises which are just off the A1 between junctions 47 and 48.

The new site comprises of a head office for Green-tech, two large stock warehouses and a production warehouse. On site there is also a number of offices that small or start-up businesses are renting and meeting rooms to hire. 



New soil site in South Yorkshire for Green-tree


We have added a new production site to our portfolio of topsoil hubs across the UK.

The new site in Scrooby, Doncaster will produce the high quality and consistent topsoil renowned from Green-tree and will provide more convenient coverage for landscape projects in the South Yorkshire and North Nottinghamshire areas.

The new site has been set up in partnership with Rotherham Sand and Gravel, an independent quarrying company and has a large-scale bagging facility that enables us to supply bulk bags or small bags of topsoil as well as bulk deliveries.



Green-tree topsoil is widely used on projects throughout the UK because it is an environmentally sustainable blend that is certified to BS3882:2015. It is also friable and easy to work with, with good water holding capacity.

Mark Wood, Green-tree Business Manager commented, "Green-tree topsoil is a rich and fertile topsoil that is manufactured using organic compost and selected natural sands. The natural fertility of Green-tree topsoil guarantees quick establishment of trees, plants and turf and no additional fertiliser products are required for the first season. We are budgeting to shift 10,000 tonnes of topsoil in the first year from this site." 

York University in Bloom thanks to John Chambers Wildflower Seed

York University is home to more than 16,000 students across nine colleges. The main campus in Heslington has recently undergone a massive £750m campus expansion programme which included a programme to develop the landscape.


As part of the expansion programme, the grounds team were tasked with supporting the biodiversity of the campus to make sure it is a suitable habitat for wildlife and wildflowers, whilst making it look attractive for students and visitors.

Grounds Maintenance Manager Gordon Eastham contacted John Chambers Wildflower Seed for help and advice. We advised on species, campus ground conditions and wildlife goals before supplying the most appropriate seed for the various areas to be planted around the campus.

The John Chambers Conservation Best 6 Annuals Mix featured heavily in the planting scheme and produced a spectacular display of colour. The mix includes Poppy, Cornflower and Marigold; the different colours and flowering habits are exceptionally complimentary to each other and produced a uniquely showy and colourful combination.



The campus has been in full bloom and been well received. One roundabout, in particular, has proved so popular that several residents have taken it upon themselves to write to the regional newspaper, the York Press. They covered the story about the "absolutely stunning wildflower display at the University Road roundabout", advising how readers had described it; "wow – what a display! I am chuffed to bits to have seen it" and "surely this must be the most beautiful roundabout in Britain."

Gordon Eastham, said, "We have had a great deal of success this year with our wildflower areas and found that it is definitely advantageous to try and do autumn sowings, particularly of the annuals. The Best 6 Annuals mix has performed particularly well and given us some high impact pockets of colour around campus in several high profile areas, which in turn has provoked a great deal of interest and lots of appreciative feedback. Approximately 10% of the University estate is now given over to wildflowers (mostly perennials) and the aim now is to systematically broaden the species range via help and advice from our seed suppliers at John Chambers Wildflower Seeds." 

Green-tech supply rural tree planting products to Glendale Civic Trees

Glendale Civic Trees who specialise in the supply, plant and relocation of trees has undertaken the creation of a Parkland for a private client in Gloucestershire.

They were called in to create a Parkland of trees and shrubs in the grounds of a large private home. Overall ground conditions were not ideal with underlying rock found close to the surface in many places.

Green-tech supplied the anchoring system for the trees. The larger trees were all semi mature with a 45cm plus girth which required securing with three and four legged anchors. Due to the ground conditions an overhead guying system was supplied as the normal dead man or anchor system was impossible to use.

Our Sales Director Ian Rotherham comments, "We stock a number of tree anchoring systems and are always happy to provide advice as to the best product for the job. Ground conditions, size of trees and planting environment are all factors that are considered."

The first phase is complete and Civic Trees will re-start planting of additional trees shortly. They are also commissioned to undertake



other projects on the site; to include shrub beds and wild flower meadows.

Deric Newman, Sales Manager, Civic Trees said, "We have a great relationship with Green-tech and have used them for many years. They always offer great customer care and provide sound advice on the most appropriate products for the project or conditions, their pricing is always keen and they always supply good quality products." 

Meet the team

In this issue we introduce Drea Questari and Elaine Yates.



Drea Questari
Technical Sales Advisor
andreaq@green-tech.co.uk

My hobbies are: Playing golf and football, gambling, cooking and skinny dipping.

What I like most about Green-tech is:

The people and Green-tech charity days where we bring in food and graze all day.

My perfect day is: Being dribbled on and woken up by my newborn son, a round of golf with the lads, back to the pub for a few beers and watch football and then chill out with the family in the evening.

If I could change one thing it would be:

Longer weekends so I can play more golf.

One thing we might not know about you:

I used to be a master baker.

In 10 years I will: Hopefully be caddying for my son on the junior pro golf tour.

Award success for Green-tech

Green-tech has been announced as a winner in the BALI National Landscape awards 2015 'Employer of the Year' category.

BALI

2015
AWARD WINNER

National
Landscape
Awards


Green-tech Chairman, Richard Kay comments, "This is fantastic news! In 2013 we were the Principle Award Winner in the category 'Affiliate Exceptional Service', so we're delighted to be announced as a winner in a new category for us – employer of the year. Our team is what makes the business the success it is so these awards are very much for them."

Green-tech was also named as a finalist for the 2015 Press Business Awards Large Business of the Year. The awards are in their 25th year and receive entries for 14 categories from businesses across North and East Yorkshire.

Commenting on this news Managing Director, Rachel Kay said, "We are thrilled to be a finalist



Chairman Richard Kay with Managing Director Rachel Kay, keeping all the plates spinning

in these prestigious regional business awards. Green-tech is a progressive business and we work really hard to offer our customers the best products, prices and service that we can. We are a large employer in this region and continue to invest in developing our people as well as the business." 



Elaine Yates
Purchasing and Stock Controller
elainey@green-tech.co.uk

My hobbies are: Swimming, musical theatre and walking dogs.

What I like most about Green-tech is:

Being part of a team that can achieve anything.

My perfect day is: Winter walk around a snow covered wood with dogs, or holiday abroad with lots of sunshine.

If I could change one thing it would be:

Take slow drivers off the road. Grrrrrr!

One thing we might not know about you:

I am an Eddie Stobart spotter!

Biggest Achievement : Marrying my best friend and buying our first house. 

John Chambers Wildflower Seed launches conservation range of bat boxes

Bats are a protected species under the Wildlife & Countryside Act so John Chambers Wildflower Seed has introduced a range of bat boxes to aid the conservation, education and monitoring of these animal.



Conservation



Chavenage




Vincent Pro



Original

The four new bat boxes include:


- The **Conservation Bat Box**, part of a range of high-specification habitats aimed at conservation professionals and pro landscapers. It is designed for multi-species and has twin vertical chambers with angled cutaway ladder style grooves which allows the bat to climb into the preferred chamber.
- The **Chavenage Bat Box**, a single chamber quality nesting box for bats that provides a roost for a variety of species.

- The **Vincent Pro Bat Box**, designed by UK leading bat researcher Colin J Morris and features vertical chambers with varying size options for different species and different temperature zones. It has proven to be highly effective with at least 7 species.
- The **Original Bat Box**, constructed from sturdy FSC certified timber and has a double chamber providing additional roost space and alternate temperature zone for different species. It also features a swing panel which allows for cleaning, if required by a licensed bat worker. 

Welcome to Sarah, Laura, Josh and Sam

It's been a record year for Green-tech on many levels but none more so than the number of new employees we're taken on.

Our newest team members are Sarah Metcalfe in reception, Laura Darlow and Josh Burns in the operations team and Sam Burton in the Sales Team.

All four have settling in well and we wish them all continued success with Green-tech. 



Sarah Metcalfe



Laura Darlow



Josh Burns




Sam Burton

Green-tech sponsors Frankie

Our very own Frankie Helliwell from the Green-tree team has returned to motor racing after a break of six years.



Always keen to support our employees and not one to turn down a good day out Green-tech is sponsoring Frankie to follow her dreams.

Frankie returned to the circuit in October competing in the MSA British Rallycross Championship at Croft in County Durham. She clearly hasn't lost her magic and we wish her every success for future races. 



T: 01423 332 100

E: sales@green-tech.co.uk

www.green-tech.co.uk

www.gtspecifier.co.uk

www.green-tree.co.uk

www.johnchamberswildflowers.co.uk

Green-tech Ltd.

Rabbit Hill Business Park,
Great North Road, Arkendale,
Knaresborough HG5 0FF

www.facebook.com/greentechuk

www.twitter.com/greentechltd

www.linkedin.com/company/green-tech-ltd

Products to protect, enhance and improve plants and their environment