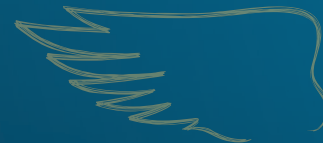




DK EXCLAIM

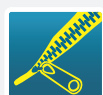
Registration Year 2015, UK
THE UNSUNG HERO



VIGOROUS ESTABLISHMENT



DOUBLE PHOMA RESISTANCE



POD SHATTER RESISTANCE

PRODUCT CHARACTERISTICS

GROSS OUTPUT	105 %
OIL CONTENT	45.1 %
EARLINESS AT REGROWTH	MID-LATE
EARLINESS AT FLOWERING	1 2 3 4 5 6 7 8 9
EARLINESS AT MATURITY	1 2 3 4 5 6 7 8 9
PLANT HEIGHT	1 2 3 4 5 6 7 8 9
LODGING RESISTANCE	1 2 3 4 5 6 7 8 9
STEM STIFFNESS	1 2 3 4 5 6 7 8 9
POD SHATTERING RESISTANCE	YES
PHOMA RESISTANCE	1 2 3 4 5 6 7 8 9
LIGHT LEAF SPOT RESISTANCE	1 2 3 4 5 6 7 8 9

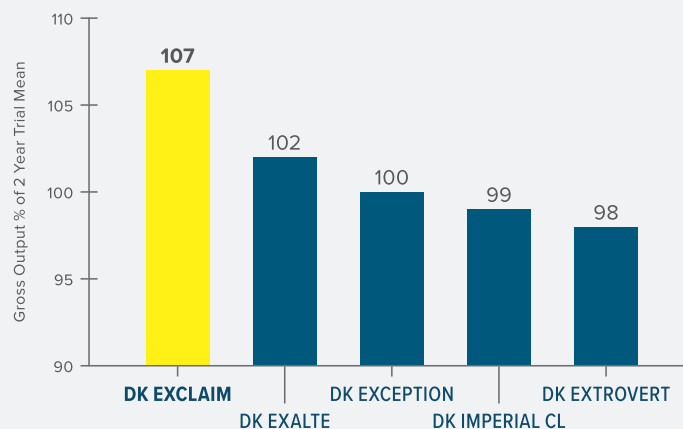
AHDB Recommended List 2017/18 Table 16 – Varieties not added to the Recommended List. Full dataset available from <https://cereals.ahdb.org.uk/varieties/ahdb-recommended-lists.aspx>

VARIETY BENEFITS

- 1** Rapid autumn growth habit suiting a wide range of sowing dates
- 2** Good resistance to Phoma, Stem Canker and Light Leaf Spot
- 3** Stiff Stemmed at harvest

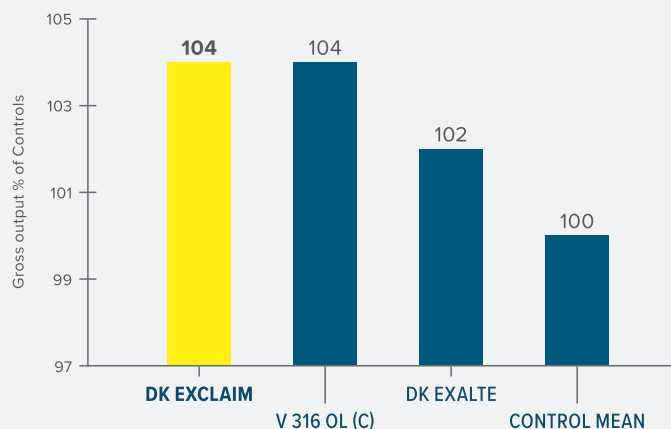
GROSS OUTPUT

DEKALB REPLICATED TRIALS HARVESTS 2016, 2017 & 2018 GROSS OUTPUT



Source: Extract from Dekalb UK replicated MidiFACT Trials Harvest 2016 3 sites, Harvest 2017 5 sites and Harvest 2018 2 sites. % of Trial Mean of all varieties entered in all 3 years.

AHDB RECOMMENDED LIST HARVEST 2017 UNTREATED TRIALS



Source: AHDB Recommended List Harvest 2017 Untreated WOSR Trials, results for recommended varieties available from <https://cereals.ahdb.org.uk> DK Exclaim yield results published by Monsanto UK Ltd.

Contact us at uk.dekalb@monsanto.com or learn more at dekalb.co.uk



DK EXCLAIM

Registration Year 2015, UK
THE UNSUNG HERO



KEY TRAITS



VIGOROUS ESTABLISHMENT

Proven ability to establish robust, well-rooted plants that are best able to cope with challenging UK conditions.



DOUBLE PHOMA RESISTANCE

The combination of the RLM7 gene and polygenic resistance provides outstanding, durable resistance to phoma stem canker and some flexibility in fungicide application.



POD SHATTER RESISTANCE

Genetic resistance that minimizes yield loss and volunteer issues caused by seed shedding up to, and during, harvest.



GOOD LIGHT LEAF SPOT RESISTANCE

Solid polygenic resistance providing a good level of protection from Light Leaf Spot the 2nd most important OSR disease.

RECOMMENDATIONS

Seed rate should target an even plant stand of 25-30 plants/m² in spring.

Ensure the Green Area Index is accurately determined at the start of spring growth to guide appropriate nitrogen rates for optimal canopy size. Lodging risk with DK EXCLAIM is low.

Light Leaf Spot should be monitored but strong resistance reduces the risk of severe infections.

BREEDER'S VIEW

“DK EXCLAIM is a hybrid that has performed consistently well in DEKALB trials throughout Northern Europe. It has shown very high yield potential and features pod shatter resistance, double phoma resistance, excellent light leaf spot resistance and very good lodging resistance.”



MATTHEW CLARKE

Contact our National Account Managers:
tom.chillcott@bayer.com, 07976 397300,
lizzie.matthews@bayer.com, 07918 622318
or our Technical Development and Agronomy representative:
william.vaughan-france@bayer.com, 07768 507866

or learn more at dekalb.co.uk

DEKALB is a trademark of the Bayer Group.