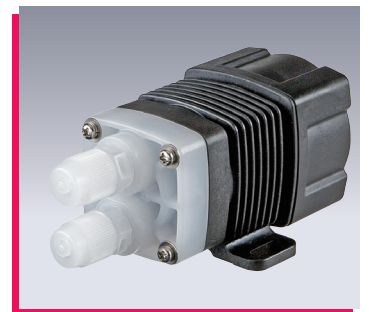
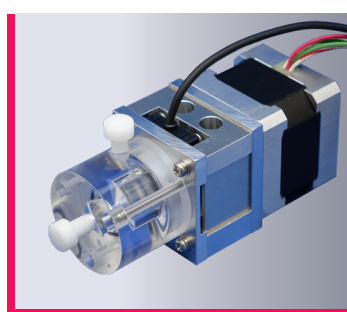
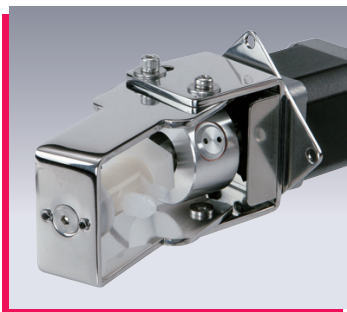
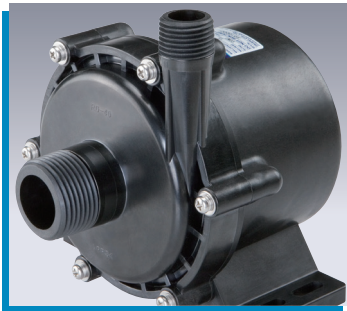
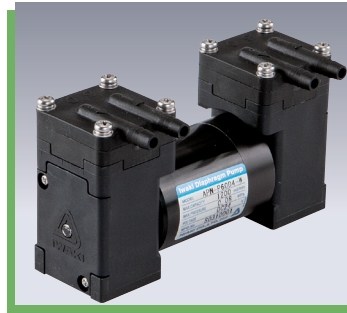


Pumps for Medical & Analytical Applications



IWAKI is a world wide leading pump manufacturer. Our high quality, compact products, such as air, magnetic drive and metering pumps, are widely used in medical, laboratory and environmental control systems.



High Quality DC pumps, compact and simple to use

Compact DC pumps offer long life and easy integration in OEM equipment.

Gas-Liquid transfer pumps

APN-W SERIES

- Long life design
- Oil free design
- Handles liquids with entrained gas
- Ultracompact & lightweight design reduces mechanical noise
- Brushed or BLDC motor options



APN-20W



APN-60W(BLDC)



APN-P60W(BLDC)

Max. air discharge capacity	2.4 l/min
Max. air discharge pressure	0.08 MPa
Max. discharge capacity	1.0 l/min
Power voltage	24 VDC
Main materials	GFRPP,FKM,EPDM

Diaphragm air pumps

APN 12/24 VDC

- Long life design
- Oil free design
- High efficiency



APN-5041



APN-085

Max. air discharge capacity	14 l/min
Max. air discharge pressure	0.08 MPa
Power voltage	24 VDC
Main materials	GFRPP, PTFE, EPDM, FKM

Direct drive pumps

NRD/RD SERIES, DDC SERIES

- Compact plastic canned pumps
- Seal-less design eliminates leakage problems
- Threaded or hose connections are available
- Motor rpm can be controlled by external 1-5 V DC signal (option)



NRD-05



NRD-08/08Z



NRD-30



RD-40



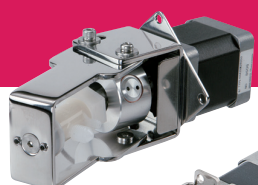
DDC

Max. discharge capacity	70 l/min
Max. discharge head	19 m
Power voltage	NRD/RD series: 24 VDC DDC series: 12 VDC
Main materials	PPS, GFRPP, FKM, 316 TI SS, EPDM, Ceramic

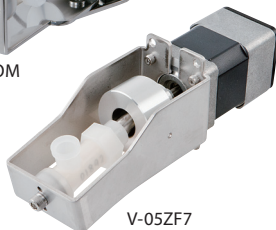
Hicera pumps

V-05 24 VDC

- Ultra-precise repeatability
- Valve-less design avoids air lock
- 24VDC stepping motor



V-05ZOM



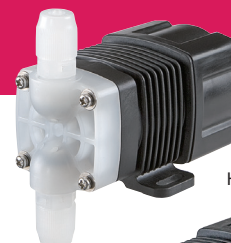
V-05ZF7

Max. discharge capacity	30 ml/min
Max. discharge pressure	0.15 MPa
Power voltage	24 VDC
Main materials	SUS, PVDF, Al ₂ O ₃ , ZrO ₂

High resolution pulse pumps

HRP SERIES

- High stroke rate up to 720 spm
- Compact design
- Highly efficient diaphragm pump
- External control functions
Pulse control, 4-20mA control, 1-5V control, Stop control



HRP-54V



HRP-54H

Max. discharge capacity	38 ml/min
Max. discharge pressure	0.2 MPa
Power voltage	12/24 VDC
Main materials	PVDF, FKM, Al ₂ O ₃

Magnetic drive gear pumps

MDG-R2 24 VDC

- Compact seal-less gear pump
- Liquid temperatures up to 95 °C
- Brushless DC motor with built-in driver



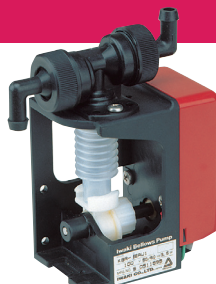
Max. discharge capacity	1.8 l/min
Max. discharge pressure	0.3 MPa
Power voltage	24 VDC
Main materials	SUS, PPS

Bellows pumps

KBR SERIES

- High durability and integrally molded bellows
- Capable of acid and alkali
- Timer type is available

Note: AC models also available.

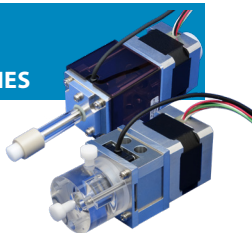


Max. discharge capacity	90 ml/min
Max. discharge pressure	0.01 MPa
Power voltage	24 VDC
Main materials	PP, EPDM

Syringe/Piston-type stepping pumps

Exmire SPV SERIES, SPX SERIES

- High Accuracy: $\pm 0.3\%$ (SPV), $\pm 0.5\%$ (SPX)
- Repeatability: 0.03% (SPV), 0.04% (SPX)
- High Resolution: 6000 steps/stroke (SPV), 2000 steps/stroke (SPX)
- 4 Pump Sizes per model 100 μ l, 250 μ l, 500 μ l, 1000 μ l
- Applications: Dispensing & Aspiration, In-Vitro & Biochemical Analyzers



Dispense range	0.01667 μ l/pulse to 1,000 μ l/stroke (SPV) 0.05 μ l/pulse to 1,000 μ l/stroke (SPX)
Max. discharge pressure	72 PSI
Power voltage	24 VDC Stepper Motor Driven
Port Connections	1/4-28 UNF
Main materials	Peek, Borosilicate Glass, Acrylic, PE

Applications

Medical equipment

Artificial dialysis
Endoscope/Dialyzer reprocessing
Biochemical analyzer
Immunoassay analyzer
Wound cleaning
Blood screening
Urine test
Nebulizer
Massage equipment

Laboratory equipment

Electrochemistry
Flow cytometry
Electromagnetic analysis
Mass spectrometry
Heat analysis
Liquid chromatography
Leak detection

Environmental control systems

Gas analyzer
TOC analyzer
Ground water analyzer

Versatile compact AC pumps

Extensive series of compact AC powered pumps meet a wide variety of demands.

Diaphragm type air pumps

APN SERIES

- Wide range of models available
- Oil free design
- High efficiency



50/60Hz

Max. air discharge capacity	100/110 l/min
Max. air discharge pressure	0.2 MPa
Power voltage	100, 115, 230 VAC
Main materials	GFRPP, EPDM, FKM

Magnetic drive pumps

MD SERIES

- Leak free magnetic drive design
- Wide range of models available such as: high flow, high head, threaded connection and corrosive-resistant types



50/60Hz

Max. discharge capacity	135 l/min
Max. discharge head	14.3/20.3 m
Power voltage	100, 115, 230 VAC / IEC
Wet ends	GFRPP or PVDF or ETFE

Electromagnetic metering pumps

EZ SERIES

- High stroke rate up to 360 spm
- Double ball check valves
- Long lasting diaphragm
- Small, lightweight and quiet design



Max. discharge capacity	400 ml/min
Max. discharge pressure	1.0 MPa
Power voltage	230 VAC
Main materials	PVC, FKM, Al ₂ O ₃

Magnetic drive gear pumps

MDG SERIES

- Compact seal-less gear pump
- Liquid temperatures up to 95 °C
- High corrosion resistance



50/60Hz

Max. discharge capacity	14/17 l/min
Max. discharge pressure	0.6 MPa
Power voltage	100, 115, 230 VAC
Main materials	SUS, PEEK, PTFE, FKM

Metallic centrifugal magnetic drive pump

Sanwa MMP SERIES

- 4°F to 248°F Standard temperature range
Consult factory for low/high temperature (-112°F to 536°F) applications
- All 316 Stainless Steel construction
- One piece machined rear casing provide extra strength



Max. discharge capacity	24 l/min
Max. discharge head	30.4m/100 ft
Power voltage	100, 115, 230, 460 VAC (Nema/IEC Frame)
Main materials	SUS, PTFE



Thorough quality-control measures and constant pursuit of efficiency have helped Iwaki establish a superior production system.



www.IwakiCustomPumps.com

IALT-00213.H Jan 2019