

Ro-door 400 >

The **Ro-door 400** is available in a vast range of sizes and options to suit any application and each individual project requirements. All made to measure, the **Ro-door 400** provides an excellent secure and weatherproof closure that is reliable and efficient.



Specifications:

Curtain

The shutter curtain is constructed from continuously interlocked standard 75mm curved galvanised steel laths, securely held in place by end locks. All curtains are complete with a heavy duty T-section galvanised steel bottom rail.

Guides

Formed from rolled steel, vertical guides are specified according to the size of opening and wind-loading. They are supplied with suitable angles for fixing to the structure.

Endplates

Steel endplates are of an appropriate thickness to accept the barrel and curtain assembly, and are supplied with angles for fixing to the structure.

Controls

A variety of controls are available including rocker-switches, key-switches or remote controls by hand transmitter, to more advanced control options.

Barrel

The roller assembly is constructed from high-quality steel tube, with the outside diameter and wall thickness suiting the door size. The full barrel assembly is hung from the endplates.

Coil Casing / Fascia

The roller assembly and motor can be encased in a galvanised steel coil casing and fascia to provide protection. This also finishes off the shutter aesthetically.

Finish

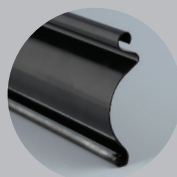
The Ro-door 400 is finished in standard galvanised steel. Polyester powder coating in a range of standard RAL colours is also available as an option. For shutter doors in high salinity or high pollution areas such as within 5 km of the coast, abattoirs, swimming pools, water treatment works or heavy industrial areas we recommend a marine-grade finish is applied.

Fixing Arrangements

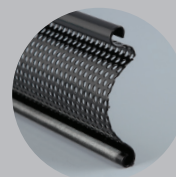
The Ro-door 400 can be installed to most type of wall or openings using a combination of fixings, on the face or within the reveal of an aperture.

Curtain Design Options:

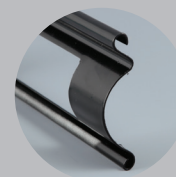
The laths are available with perforations and punched slots, to allow ventilation and/or provide visibility/light, whilst maintaining the necessary security.



Solid



Perforated



Punched

Operation:

Manual Push-Up

High-quality tensioned springs, mounted inside the tube allows operators to push-up and pull-down the curtain smoothly and effortlessly. Push-up operation is only suitable for smaller openings.

As standard, bullet locks are fitted to all manual push-up shutter doors – other locking options are available on request.

Openings exceeding 6m² should be chain or electrically operated.

Hand Chain Drive

Manual operation is by means of a continuous galvanised haul chain. Hand chain operation is only suitable for openings with infrequent usage.

As standard, a chain keep is fitted to all hand chain operated shutter doors; other locking options are available on request.

Openings exceeding 30m² should be electrically operated.

Electrical Operation

Various types of arrangement are available with smaller openings typically using a 240-volt single-phase tubular motor, which is totally concealed within the barrel and comes with a manual override at high level to allow operation in the event of power failure.

Larger shutters are operated by a three-phase motor, which has an emergency hand chain, operable from floor level in the event of electrical or mechanical failures.

Safety brakes are fitted where necessary to comply with regulations.

