



EUROPEANTILEMASTERS.COM

954.917.3599

[orders@eurotilemasters.com](mailto:orders@eurotilemasters.com)

## NECESSARY TOOLS FOR HANDLING & INSTALLING EXTRALARGE "JUMBO" TILE (3mm to 12mm)

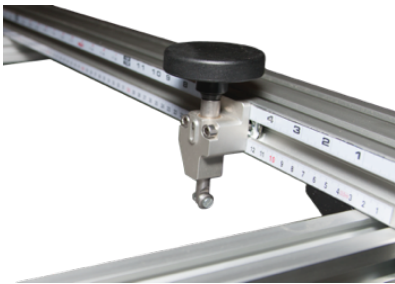
### 1. ETM-RAIL CUTTER

- The most accurate & easy to use tile cutter
- 2 Built in tape measures eliminates the need to mark tile
- Two piece rail cutter - quick connect
- Includes Euro-Snap



### 2. ETM-EXPRESS CUTTER

- Capable of cutting unlimited lengths
- Slides on the edge of tile
- Ships completely assembled
- Built in measuring system
- Includes Euro-Snap



### 3. ETM-PANEL CUTTER

- Easy to place tile on the frame
- Designed to reach across full width of tile with ease
- Cutter Adjustable to 3, 6, 12mm thicknesses
- Design for up to 1.5 meter wide tile
- Includes Euro-Snap



### 4. ETM-RIP CUTTER

- Attaches to the ETM-TABLE (sold Separately) for repeated long and narrow cuts
- Adjustable to 3, 6, 12mm thicknesses
- Maximum cutting length 3.6 meter
- Built in measuring system
- Includes Euro-Snap



### 5. ETM-CROSS CUTTER

- Attaches to the ETM-TABLE (sold Separately) for repeated accurate cross cuts
- Built in tape measure for quick and accurate measurements
- Cutter able to slide the full length of ETM-TABLE
- Maximum cutting length 1 meter
- For cutting tile in half we recommend the ETM-SAWHORSE for support
- Adjustable to 3, 6, 12mm thicknesses
- Includes Euro-Snap



## 6. ETM-TRANSPORTER

- For transporting up to 8 pieces of 6mm or 16 pieces of 3mm tile
- Fully adjustable cross bar for securing tile



## 7. ETM-SLIDE

- Quick release system for moving & handling odd shape tile of various sizes
- Set includes 10 suction cups & 2 - 28" end sections
- Multiple length configuration (5' to 10')
- Multiple shape configuration (T,U & Z shapes)



## 8. ETM-SPINE

- For loading and unloading ETM-TRANSPORTER
- Installing 1x1 and 1.5 x 1.5 meter tile
- Each spine is 33"



## 9. ETM-A-FRAME

- Designed for displaying and storing full size tile
- Ideal for showrooms and job sites
- Easy height adjustment



## 10. ETM-TABLE

- Two 72 x 39 tables (tables designed to be joined)
- Unique clamping system for securing tile to table
- Folding Legs
- Ships Completely assembled
- Built in Power Strip
- Designed to store other tools (**tools sold separately**)



### 11. ETM-DBL SUCTION CUP

- For both smooth and rough surface tile



### 12. ETM-EZ BREAKER

- Used for breaking very narrow pieces of tile after incision
- Recommended to be used for tile thickness between 5.6 & 12mm



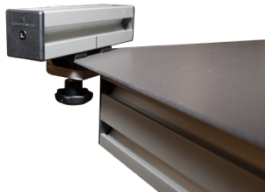
### 13. ETM-GRIP

- For unloading, moving, handling & back buttering of tile
- 12 suction cups (fully adjustable)
- Use middle section for 1 x 1 & 1.5 x 1.5 meter



### 14. ETM-SNAP

- To snap tile after incision



### 15. ETM-LEAN

- Designed for use in hard to reach places with out stepping in thinset



### 16. ETM-SAWHORSE SET

- Designed to support ETM-Grip while Spreading thinset
- Works well with ETM-Table for extra support of tile



### 17. ETM-DIAMOND SANDING PAD

- For smoothing the tile edge
- 3 SIDED - 60, 200, 400 GRIT



### 18. PUMP SUCTION CUP

- 8 inch pump up suction cup



### SIGMA KERA-CUT

#### 19. 8E2-10'

#### 20. 8C2 - 5'

- Accurate & easy to use tile cutter



### 21. SIGMA KERA-EDGE KIT

- For beveling & bullnosing tile



### 22. SIGMA KERA-MITER KIT

- For face mitering
- One pass mitering with backer board glued to tile



### 23. SIGMA KERA-FLEX KIT

- For plunge & L cuts



### 24. SIGMA WATER DAM & GUIDE

- For drilling fast and accurate holes
- Diamond hole saws range from 1/16" to 4 1/2"



### 25. SIGMA SEPARATOR

- For splitting tile after it's scored



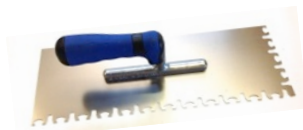
### 26. CORNER PROTECTOR

- Set of 4



### 27. ETM-EURO-NOTCH TROWEL

- Zipper trowel for maximum thin set coverage 90-98%
- Stainless steel with soft grip handle



### REMOVABLE LIPPAGE TUNING SYSTEM

28. WLFT (floor tool) 29. WLS (strap) 30. WLW (wedge)

- Kick wedge to remove after installation

▪ Important feature: Remove wedge to clean fresh excess thin set



[orders@europantilemasters.com](mailto:orders@europantilemasters.com)  
954.917.3599

**sigma**<sup>®</sup>