

L'ECCELLENZA TECNOLOGICA / UPGRADE YOUR LATHE & BOOST PRODUCTIVITY

0,0002" MAXIMUM
RUN OUT !!

PIÙ DI
700 MODELLI
DISPONIBILI
CON **MIGLIOR RAPPORTO**
QUALITÀ/ PREZZO !!!

MORE THAN 700 MODELS
AVAILABLE WITH THE BEST
PRICE / QUALITY RATIO

QUICK
ASSISTANCE

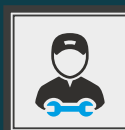
2 YEARS
GUARANTEED

MODULAR
QUICK CHANGE



Motorizzato Radiale
Radial Driven Tool

Motorizzato Assiale
Axial Driven Tool



Opzioni - Options:



REFRIGERANTE
INTERNO

INTERNAL
COOLANT



ALTA VELOCITÀ
Ratio 1:2 / 1:4

HIGHER SPEED
Ratio 1:2 / 1:4



PINZE
COMPENSATE

COMPENSATED
COLLETS



USCITE
MULTIPLE

MULTIPLE
OUTPUTS

- **Corpo Principale** - Trattamento protettivo anti-ossidante del corpo in acciaio integrale a sezione maggiorata per ridurre vibrazioni e aumentare la rigidità
- **Refrigerazione Interna** - Tutti i Motorizzati possono essere forniti con refrigerante interno e pressione fino 100bar. Rotazione a secco possibile!
- **Oscillazione** - Controllo dell'oscillazione massima, e del surriscaldamento su banco di prova
- **Coppia & Rpm** - Coppia disponibile fino a 100Nm e velocità fino a 10.000Rpm
- **Uscite** - Pinze ER / WELDON / HSK / CAT / SK / BT / CAPTO o uscite portafresa
- **Ingranaggi Gleason** - Coppia conica di ingranaggi spirodali Gleason con evolvente rettificato per garantire una maggior forza e ridurre rumore e riscaldamento
- **Cuscinetti** - Cuscinetti a contatto obliquo + cuscinetti a rulli conici su lato mandrino per maggiore rigidità e durata nel tempo
- **Prese di moto** - Diverse tipologie e lunghezze di prese di moto per torrette VDI e torni BMT

■ **Main Body** - Specially treated corrosion resistant integral steel body re-designed to improve rigidity and reduce vibrations.

■ **Internal Coolant** - All the driven tools can be supplied with internal coolant option up to 100bar. Dry running possible!

■ **Run Out** - Vibration, runout and temperature control on test bench

■ **Torque & Rpm** - Rated to 100 Nm torque and 10.000Rpm.

■ **Outputs** - ER collets / WELDON / HSK / CAT / SK / BT / CAPTO or shell end milling cutter.

■ **Gleason Gears** - Gleason spiral bevel gears with ground teeth in order to guarantee a bigger torque, less noise and heating.

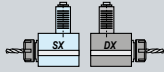
■ **Bearings** - Angular contact, preloaded, high precision ball bearings + tape roller bearings on output spindle for better rigidity and longer life.

■ **Couplings** - Different types of couplings / size (VDI and BMT) and clamping

VDI
DIN69880

DIN 5480

In caso di ordine specificare sempre se *sinistro* o *destro*



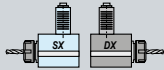
ASSIALI - AXIAL								
d1	Cod. - Code		ER	H	Nm	Rpm	List Price €	
30	99.ST.8003	-	25	66	32	6000	864	
	99.ST.8011	🔹	25	66	32	6000	1.116	
40	99.ST.8005	-	32	95	63	6000	1.080	
	99.ST.8013	🔹	32	95	63	6000	1.412	
RADIALI - RADIAL								
30	99.ST.8030	-	25	55	32	6000	1.814	
	99.ST.8038	🔹	25	55	32	6000	2.088	
40	99.ST.8033	-	32	100	63	6000	2.296	
	99.ST.8041	🔹	32	100	63	6000	2.636	

🔄 **Senso di rotazione opposto al mandrino**
Direction of rotation opposite to machine spindle

VDI
DIN69880

BARUFFALDI

In caso di ordine specificare sempre se *sinistro* o *destro*



ASSIALI - AXIAL								
d1	Cod. - Code		ER	H	Nm	Rpm	List Price €	
30	99.BF.8003	-	25	94	32	6000	842	
	99.BF.8010	🔹	25	94	32	6000	1.124	
40	99.BF.8005	-	32	117	63	5000	1.016	
	99.BF.8011	🔹	32	115	63	5000	1.310	
RADIALI - RADIAL								
30	99.BF.8021	-	25	55	32	6000	1.678	
	99.BF.8027	🔹	25	55	32	6000	1.966	
40	99.BF.8024	-	32	53	63	5000	2.016	
	99.BF.8030	🔹	32	53	63	5000	2.362	

🔄 **Senso di rotazione opposto al mandrino**
Direction of rotation opposite to machine spindle

BMT 55
BIGLIA

ASSIALI - AXIAL						
BMT	Cod. - Code		ER	H	Rpm	List Price €
55	99.BG.B02.A	-	32	83,5	4000	840
	99.BG.B02.D	🔹	32	83,5	4000	1.260
ASSIALI - AXIAL						
55	99.BG.B05.A	-	32	70	4000	1.400
	99.BG.B05.B	🔹	32	70	4000	1.680

🔄 **Senso di rotazione uguale al mandrino**
Direction of rotation same as machine spindle

BMT 40
BIGLIA
BMT40: B463

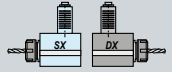
ASSIALI - AXIAL						
BMT	Cod. - Code		ER	H	Rpm	List Price €
55	99.BG.B40	-	20	57	6000	1.322
	99.BG.B41	🔹	20	57	6000	1.742
ASSIALI - AXIAL						
55	99.BG.B46	-	20	70	6000	2.567
	99.BG.B47	🔹	20	45	6000	2.645

🔄 **Senso di rotazione uguale al mandrino**
Direction of rotation same as machine spindle

VDI
DIN69880

DIN 5482

In case of order specify always *left* or *right* orientation you need



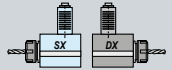
ASSIALI - AXIAL								
d1	Cod. - Code		ER	H	Nm	Rpm	List Price €	
30	99.ST.8201	-	25	94	32	6000	814	
	99.ST.8207	🔹	25	94	32	6000	1.194	
40	99.ST.8203	-	32	115	63	5000	980	
	99.ST.8208	🔹	32	115	63	5000	1.268	
RADIALI - RADIAL								
30	99.ST.8217	-	25	55	32	6000	1.634	
	99.ST.8223	🔹	25	55	32	6000	1.908	
40	99.ST.8220	-	32	100	63	5000	1.958	
	99.ST.8226	🔹	32	100	63	5000	2.290	

🔄 **Senso di rotazione opposto al mandrino**
Direction of rotation opposite to machine spindle

VDI
DIN69880

DIN 1809

In case of order specify always *left* or *right* orientation you need



ASSIALI - AXIAL								
d1	Cod. - Code		ER	H	Nm	Rpm	List Price €	
30	99.DP.0903	-	25	94	32	6000	814	
	99.DP.0910	🔹	25	94	32	6000	1.094	
40	99.DP.0905	-	32	115	63	5000	980	
	99.DP.0911	🔹	32	115	63	5000	1.268	
RADIALI - RADIAL								
30	99.DP.0919	-	25	55	32	6000	1.634	
	99.DP.0925	🔹	25	55	32	6000	1.908	
40	99.DP.0922	-	32	100	63	5000	1.958	
	99.DP.0928	🔹	32	100	63	5000	2.290	

🔄 **Senso di rotazione opposto al mandrino**
Direction of rotation opposite to machine spindle

**NLX
NZX**
DMG MORI
NLX 1500 - 2000 - 2500 - 3000
NZX 12 Station Turrets

Cod. - Code		ER	H	Nm	Rpm	List Price €
99.MS.G59	-	32	86,2+89,9	60	10000	1.176
99.MS.G60	🔹	32	86,2+89,9	60	10000	1.740
99.MS.G62	-	40	86,2+89,9	60	10000	1.176
99.MS.G63	🔹	40	88,3+92	60	10000	1.740
99.MS.G72	-	32	Max 90	60	10000	2.520
99.MS.G73	🔹	32	Max 90	60	10000	2.820
99.MS.G76	-	40	90	60	10000	2.520
99.MS.G77	🔹	40	90	60	10000	2.820

🔄 **Senso di rotazione opposto al mandrino**
Direction of rotation opposite to machine spindle

NZ
DMG MORI
NZ 1500 - 2000 - 3100 - 3150
3200 16 Station Turrets

Cod. - Code		ER	H	Nm	Rpm	List Price €
99.MS.A101	-	25	80,6+84,3	50	12000	1.176
99.MS.A102	🔹	25	80,6+84,3	50	12000	1.740
99.MS.A103	-	32	85,5+89,2	50	12000	1.176
99.MS.A104	🔹	32	85,5+89,2	50	12000	1.740
99.ST.8106	-	25	85	50	12000	2.520
99.ST.8107	🔹	25	85	50	12000	2.820
99.ST.8108	-	32	85	50	12000	2.520
99.ST.8109	🔹	32	85	50	12000	2.820

🔄 **Senso di rotazione opposto al mandrino**
Direction of rotation opposite to machine spindle

VDI40

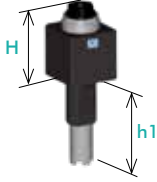
HAAS



Presi di moto intercambiabile per diverse torrette Haas

ASSIALI - AXIAL

Cod. - Code	ER	H	h1	Nm	Rpm	List Price €
99.HA.590082	-	32	75	117,5	63	890
99.HA.590082B	🔵	32	75	117,5	63	1.110
99.HA.590083	-	32	75	104,8	63	890
99.HA.590083B	🔵	32	75	104,8	63	1.110
99.HA.596352	-	32	75	130,25	63	890
99.HA.596352B	🔵	32	75	130,25	63	1.110



VDI40

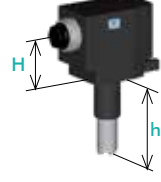
HAAS



Interchangeable couplings for the different HAAS turret

RADIALI - RADIAL

Cod. - Code	ER	H	h1	Nm	Rpm	List Price €
99.HA.590084	-	32	75	117,5	63	1.670
99.HA.590084B	🔵	32	75	117,5	63	2.110
99.HA.590085	-	32	75	104,8	63	1.670
99.HA.590085B	🔵	32	75	104,8	63	2.110
99.HA.596353	-	32	75	130,25	63	1.670
99.HA.596353B	🔵	32	75	130,25	63	2.110



🔄 Senso di rotazione uguale al mandrino
Direction of rotation same as machine spindle

QTN2

MAZAK

QUICK TURN NEXUS QTN 200/250
SUPER QUADREX TURN SQT 15/18 - 200/250

ASSIALI - AXIAL

Cod. - Code	ER	H	Nm	Rpm	List Price €	
99.MZ.A58	-	32	116,2+120	80	6000	1.560
99.MZ.A59	🔵	32	116,2+120	80	6000	2.400

RADIALI - RADIAL

99.MZ.A65	-	32	130	80	6000	1.670
99.MZ.A66	🔵	32	130	80	6000	2.200

🔄 Senso di rotazione opposto al mandrino
Direction of rotation opposite to machine spindle



SMART QTS1

MAZAK

QUICK TURN SMART QTS 100M / 200M
QT COMPACT 100M - 200M - 300M

Cod. - Code	ER	H	Nm	Rpm	List Price €	
99.MZ.A03	-	32	Max 70	60	6000	1.555
99.MZ.A06	🔵	32	Max 70	60	6000	2.110

99.MZ.A09	-	32	80	60	6000	2.220
99.MZ.A10	🔵	32	80	60	6000	2.780

🔄 Senso di rotazione opposto al mandrino
Direction of rotation opposite to machine spindle



Ø45 Ø54

MIYANO

Ø45: ABX 51/64 - TH2/TH3 - BNE 34/42
Ø54: BNJ42/51

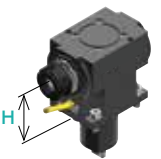
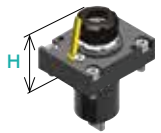
ASSIALI - AXIAL

Cod. - Code	ER	H	Nm	Rpm	List Price €	
99.MY.A02	-	25	53,9+57,6	35	6000	803
99.MY.A03	🔵	25	53,9+57,6	35	6000	963
99.MY.A09	-	32	75,7+79,4	60	6000	935
99.MY.A10	🔵	32	75,7+79,4	60	6000	1.073

RADIALI - RADIAL

99.MY.A05	-	25	65	35	6000	1.419
99.MY.A06	🔵	25	65	35	6000	1.705
99.MY.A11	-	32	75	60	6000	1.760
99.MY.A12	🔵	32	75	60	6000	2.079

🔄 Senso di rotazione opposto al mandrino
Direction of rotation opposite to machine spindle



BMT 44 BMT 55

NAKAMURA

BMT44: WT100 - TW1
BMT55: SUPER NTJ-NTJX / NTM3 / TMC18 / TW10 / SC150-250 / WT150-250 / WTW 150 / WTS 150 / WT 100

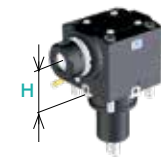
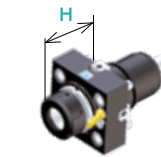
ASSIALI - AXIAL

BMT	Cod. - Code	ER	H	Nm	Rpm	List Price €	
44	99.NK.A40	-	25	Max 57,2	40	6000	891
	99.NK.A43	🔵	25	Max 57,2	40	6000	1.018
55	99.NK.A03	-	32	68,5+ 72,2	63	6000	935
	99.NK.A04	🔵	32	68,5+ 72,2	63	6000	1.441

RADIALI - RADIAL

44	99.NK.A50	-	25	60	40	6000	1.579
	99.NK.A53	🔵	25	60	40	6000	1.892
55	99.NK.A13	-	32	55	63	6000	1.760
	99.NK.A14	🔵	32	55	63	6000	2.373

🔄 Senso di rotazione opposto al mandrino
Direction of rotation opposite to machine spindle



BMT 60

OKUMA

SPACE TURN LB 200EX / LB 2500EX
/ LB3000EX / GENOS SERIES L300-MW /
MULTUS U3000 / U40007 / LU3000EX M / MY

ASSIALI - AXIAL

BMT	Cod. - Code	ER	H	Nm	Rpm	List Price €	
60	99.OK.A80	-	32	Max 79	60	6000	1.590
	99.OK.A81	🔵	32	Max 79	60	6000	2.020

ASSIALI - AXIAL

60	99.OK.A82	-	32	70	60	6000	2.880
	99.OK.A83	🔵	32	70	60	6000	3.420

🔄 Senso di rotazione opposto al mandrino
Direction of rotation opposite to machine spindle



BMT 65

TSUGAMI

BMT65: M06D / M06SD / M06SY
M08D / M08SD / M08SY

Cod. - Code	ER	H	Nm	Rpm	List Price €	
99.TS.A01	-	25	60	40	8000	1.467
99.TS.A02	🔵	25	60	40	8000	2.017

99.TS.A08	-	25	65	40	8000	2.383
99.TS.A09	🔵	25	65	40	8000	2.933

🔄 Senso di rotazione uguale al mandrino
Direction of rotation same as machine spindle



BMT 40/55/65/75/85

COMPATIBILI CON / COMPATIBILITY WITH DOOSAN / HARDINGE / SAMSUNG / HWACHEON / HYUNDAI WIA / VICTOR / HAAS LATHES

Ora compatibili con BMT 65
Now compatible with BMT65



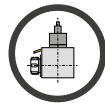
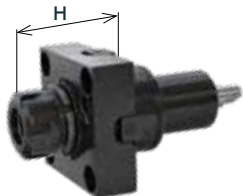
Senso di rotazione uguale al mandrino
Direction of rotation same as machine spindle



Senso di rotazione opposto al mandrino
Direction of rotation opposite to machine spindle



Axial



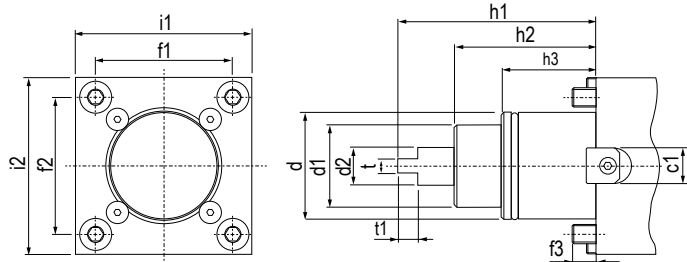
Radial



ASSIALI - AXIAL						
BMT	Cod - Code	ER	H	Nm	Rpm	List Price €
45	99.DS.A03	25	Max 57,2	35	8000	972
	99.DS.A04	25	Max 57,2	35	8000	1.110
55	99.DS.A01	25	Max 57,2	40	8000	1.020
	99.DS.A02	25	Max 57,2	40	8000	1.170
65	99.DS.A41	32	Max 72,5	70	6000	1.200
	99.DS.A42	32	Max 72,5	70	6000	1.380
75	99.DS.A34	40	Max 90,2	100	6000	1.410
	99.DS.A35	40	Max 90,2	100	6000	1.620

RADIALI - RADIAL							
BMT	Cod - Code	*	ER	H	Nm	Rpm	List Price €
45	99.DS.A07C		25	65	35	8000	1.716
	99.DS.A08C		25	65	35	8000	2.064
55	99.DS.A11C		25	70	40	8000	1.920
	99.DS.A12C		25	70	40	8000	2.268
65	99.DS.A51C		32	72	70	6000	2.016
	99.DS.A52C		32	72	70	6000	2.388
75	99.DS.A38C		40	60	100	6000	3.120
	99.DS.A39C		40	60	100	6000	3.744

* Disponibili sia con rotazione uguale sia contraria al mandrino macchina
Both direction of rotation to machine spindle available



BMT	c1	d	d1	d2	f1	f2	f3	h1	h2	h3	i1	i2	t	t2
45	15	Ø45	35	14	58	58	10	84	60	40	75	75	6	8,5
55	15	Ø55	40	16	64	64	14	104	75	30	85	85	8	8,5
65	18	Ø65	45	18	70	70	15	112	83	32	94	94	10	14
75	25	Ø75	55	23	90	90	15	110	80	43	112	112	14	15
85	25	Ø85	65	33,5	100	100	18	140	100	43	125	125	16	20



Cambi rapidi modulari
Quick modular change

Ideali per il cambio rapido delle diverse tipologie di portautensili con la sede dell'utensile per pinza ER (DIN6499)

For the fitting of toolholders in a spindle unit with ER collets (DIN6499) outputs.
All Adaptors are suitable for external and internal coolant supply.



For internal nut with External thread
Per ghiera interne con filetto esterno

Molteplici possibilità d'impiego senza costi aggiuntivi. Utilizzo standard o modulare.

Keep your possibilities open with the adaptors. Without additional costs any time flexible. Standard or modular use!



Per ghiera esterne con filetto interno
For External nut with Internal thread

Incrementa la produttività e riduci i tempi di installazione. Possibilità di presetting a bordo macchina.

Increase productivity by reducing CNC downtime. Presetting tools offline allows more run time and more profit!



Estrema compatibilità
Extreme compatibility and accuracy

I cambi rapidi modulari possono essere montati su ogni tipo di Motorizzato o Testa angolare con uscita ER.

The quick change adaptors can be mounted on any type of Driven Tool or right Angle Head with ER output