

# INTELLICONE<sup>®</sup>

## SMART TAPER

Highway Resource Solutions' Smart Taper system enables an instant response to taper strikes, thereby significantly reducing risk to both road workers and road users.

The Smart Taper consists of Intellicone Unipart Dorman sequential lamps and a Taper Beacon that is positioned at the end of the taper.

Motion sensitive Intellicone lamps monitor the integrity of a cone taper in real-time and instantly transmit a wireless alarm signal if a strike is detected. The Taper Beacon relays these alarm signals as well as taper deployment information to relevant personnel via automated phone calls, text messages or email alerts. Each message contains as a minimum the date, time, GPS location, road name and nearest marker post location (if available). The Taper Beacon messages are fully customisable and can be used to automate road works reporting, reduce cyclic maintenance requirements and provide real time road works information to the general public thereby improving their travelling experience.

For example, Smart Taper deployment emails can be used by the control centre to reduce manual data entry. Automated taper strike phone and text messages can be used by Traffic Management Operatives to optimise their cyclic maintenance activities and respond instantly to a taper strike event. The latter will significantly reduce the risk to the travelling public and road workers operating in the road closure. An optional site alarm can also instantly be activated to notify workers of potential danger.

Every taper strike is automatically logged and recorded, for further analysis. Additional reporting information includes automatic reports on working windows with closure ON and OFF times, location analysis of taper strikes, reaction time to reinstate Traffic Management and a live mapping portal which displays the status of all Smart Taper locations.

## USE ROBUST TECHNOLOGY TO MAKE EXISTING EQUIPMENT SMART



[www.highwayresource.com](http://www.highwayresource.com)

**0800 206 13 19**

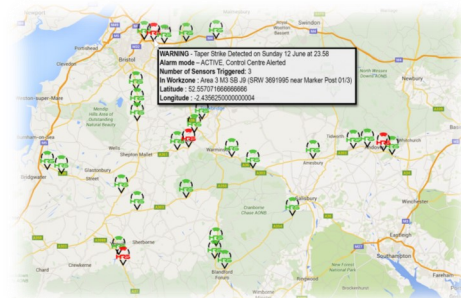
### WHAT?

- **INSTANT STRIKE ALERT**
- **REAL TIME DEPLOYMENT TIMING & LOCATION MAPPING**
- **AUTOMATED REPORTING**



### WHY?

- **REDUCES RISKS FROM TAPER STRIKES TO WORKFORCE AND ROAD USERS**
- **ENABLING REACTIVE MAINTENANCE WILL REDUCE COSTS**
- **REAL TIME MAPPING IMPROVES LIVE INFORMATION ON ROADWORKS/INCIDENTS**
- **AUTOMATED REPORTING CAN REDUCE CONTROL CENTRE RESOURCE REQUIREMENTS**



Follow us on



# PACKAGES

	Standard	Enterprise
<b>Smart Taper Lamps</b> A pack of 20 Intellicone® Dorman Sequential ConelITES are included*	✓	✓
<b>Smart Taper Beacon</b> Taper Beacon including 4 x 6V 50Ah batteries	✓	✓
<b>Taper Strike Alert</b> Automated taper strike alert phone call & email notifying of event, location and severity of strike	✓	✓
<b>Web Portal Login &amp; Mapping</b> Real-time mapping of taper deployments including taper on & off time, strikes, severity, working window etc		✓
<b>Reporting</b> Online reporting tool to generate utilization, incident and exception reports		✓
<b>Maintenance Package</b> Includes all batteries required for Taper Beacon operation (4 per month) as well as full servicing of Taper Beacon		✓
<b>Training</b> Free online training and deployment resources	✓	✓
<b>Insurance (Taper Beacon)</b> Includes insurance with £250 excess (terms apply *)	✓	✓

\*contact us for details

# OPTIONAL EXTRAS

	Standard	Enterprise
<b>Portable Site Alarm</b> To alert the workforce in case of a taper strike or incursion in their work area	Optional	Optional
<b>Intellicone® Dorman Static Lamps</b> To create a safe working perimeter around the workforce operating within a lane closure.	Optional	Optional



[www.highwayresource.com](http://www.highwayresource.com)  
**0800 206 13 19**