

Net2 Installer Guide

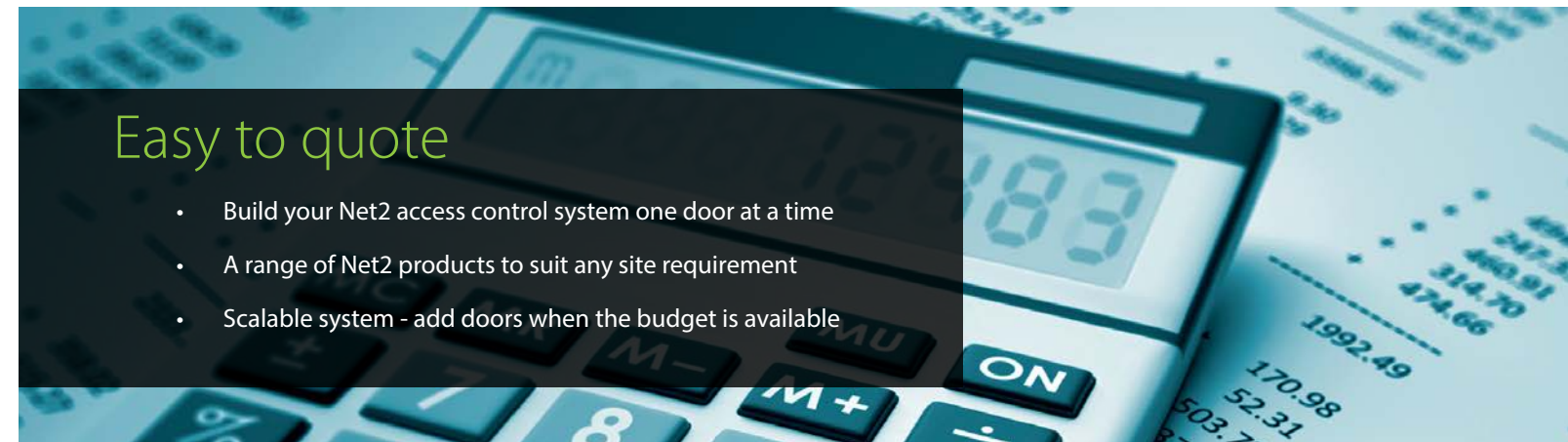
Contents

What is Net2 Access Control?	3
A Simple System Set Up	4 - 5
Door Controllers	6 - 7
Access Control Software	8 - 9
Net2 Software Features	10
System Integration	11
Readers and Keypads	12
Door Entry - Net2 Entry	13
Additional Features Your Customers Will Like	14
Where Can I Sell Net2?	15
Example Site - Halls of Residence	16
Example Site - University	17
Example Site - Listed Building	18
Example Site - Multi-site Offices	19
Next Steps	20
Who Can I Contact?	21

What is Net2 Access Control?

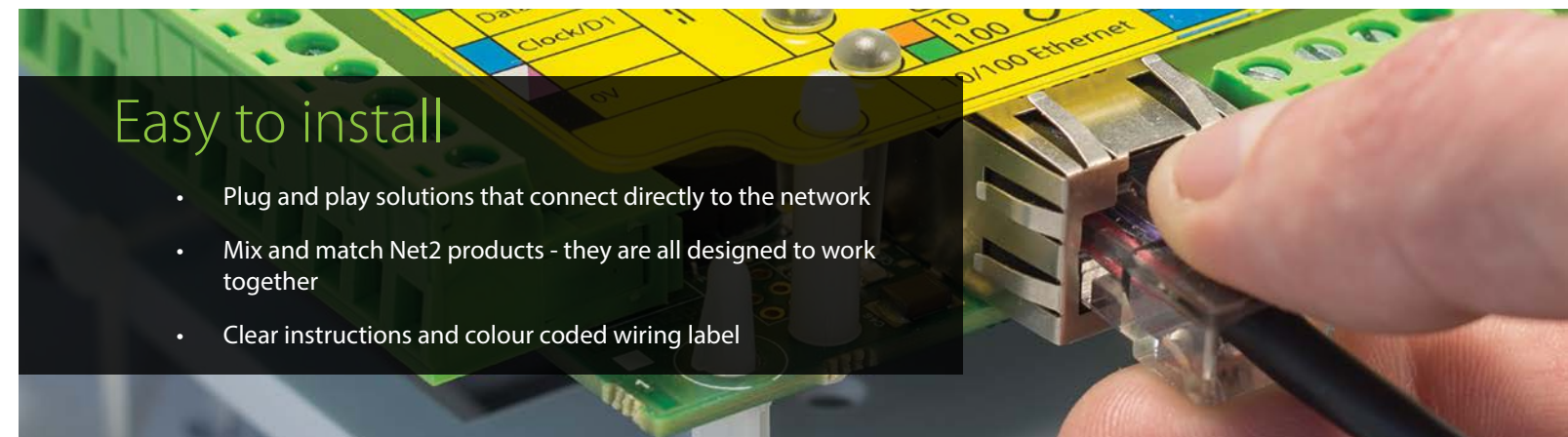
Net2 is Paxton's user friendly and flexible networked access control system, which is managed from a central PC.

Net2 access control is really easy to install and designed to make the management of any building very simple. Net2 offers a range of IP, battery powered, wireless or wired door controllers to suit any site requirement, making installers' lives easier.



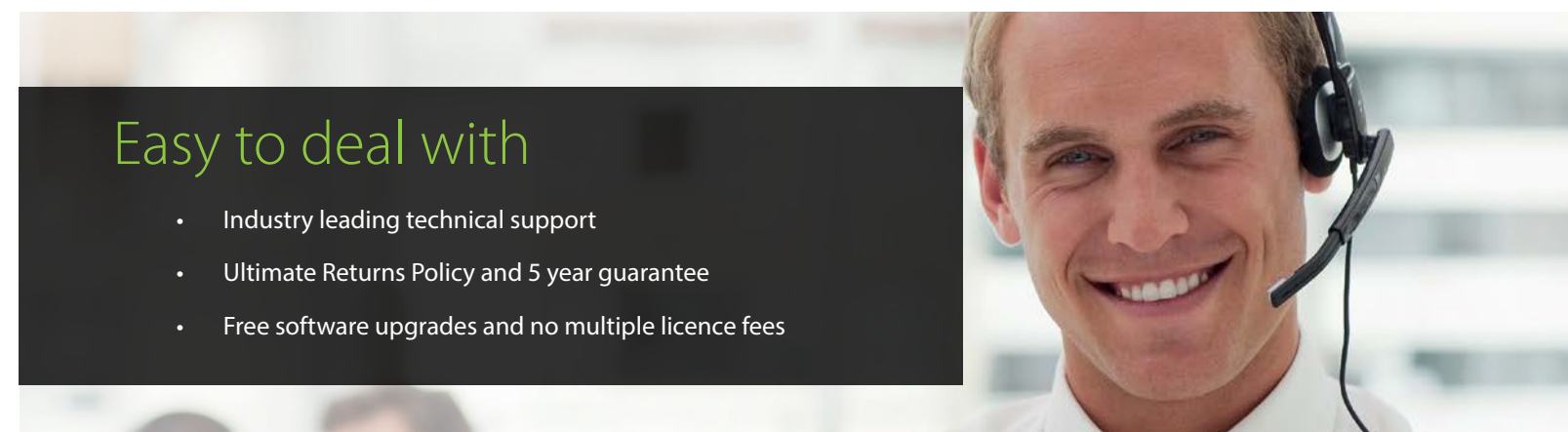
Easy to quote

- Build your Net2 access control system one door at a time
- A range of Net2 products to suit any site requirement
- Scalable system - add doors when the budget is available



Easy to install

- Plug and play solutions that connect directly to the network
- Mix and match Net2 products - they are all designed to work together
- Clear instructions and colour coded wiring label



Easy to deal with

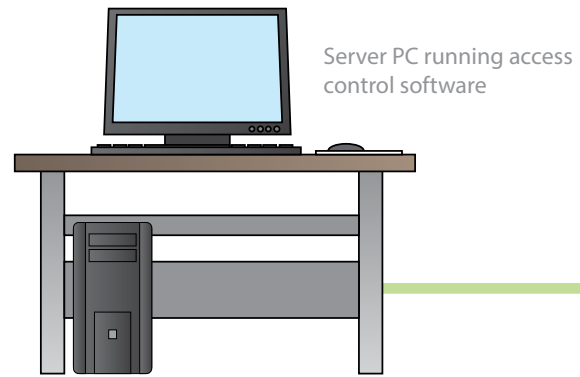
- Industry leading technical support
- Ultimate Returns Policy and 5 year guarantee
- Free software upgrades and no multiple licence fees

A Simple System Set Up

Net2 is designed with simplicity in mind and is easily scalable. Paxton's one door controller philosophy means you only quote for doors that require access. You can build your Net2 system one door at a time using the following components.

Components:

- 1 x Net2 software - server PC (per system)
- 1 x door controller (per door)
- 1 x reader/keypad (per door)
- 1 x exit button (per door - if required)
- Net2 tokens (per user)



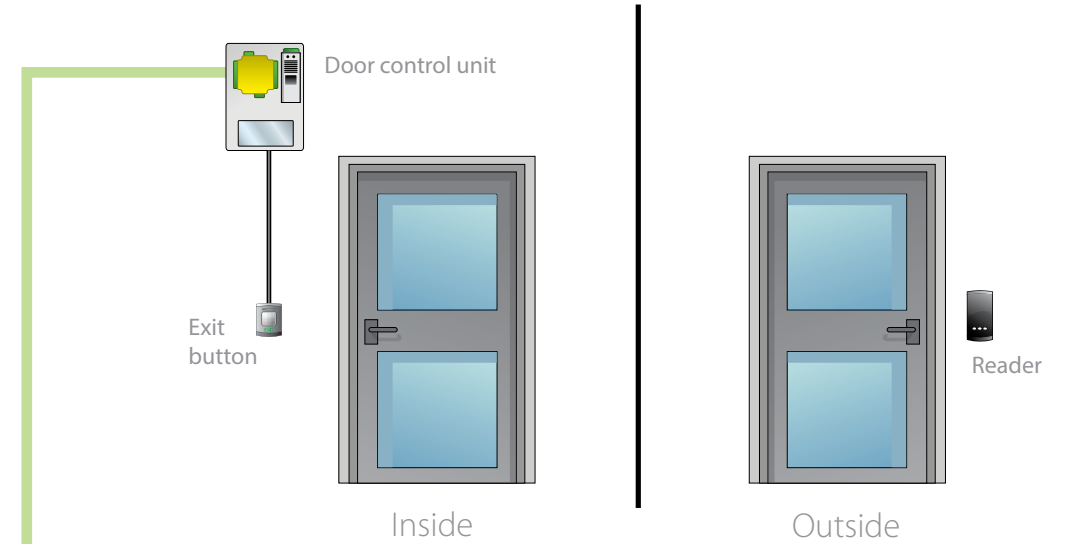
Server PC running access control software



Door Entry System

The Network

Wired IP Access Control Solution



Wireless IP Access Control Solution



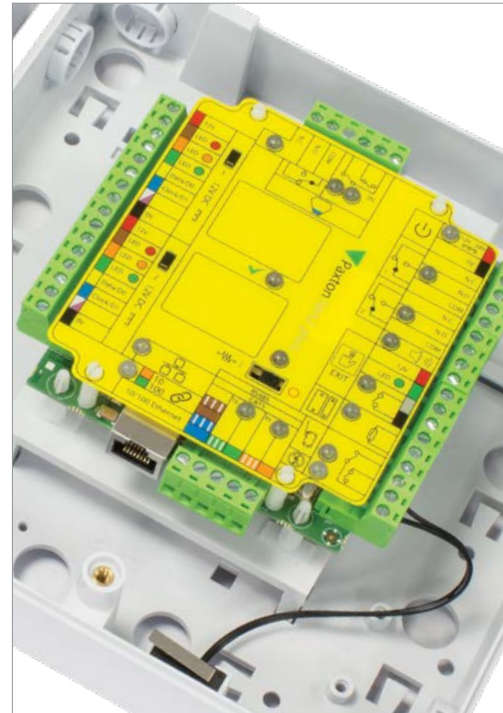
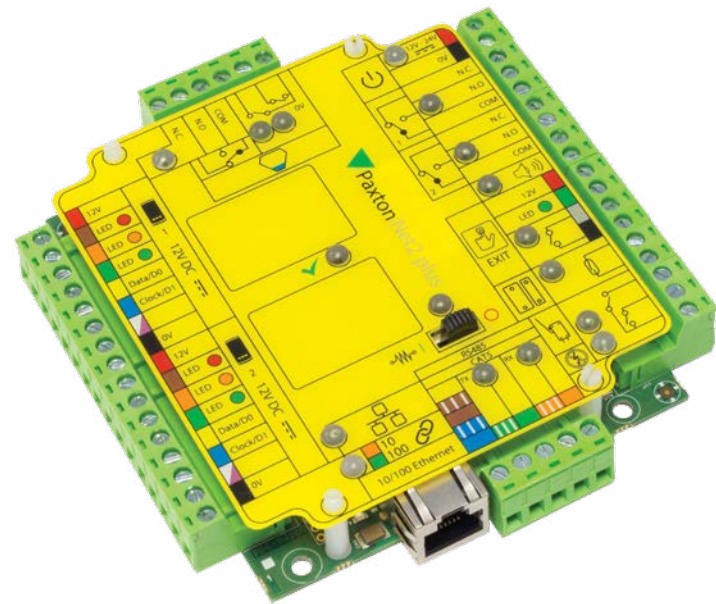
Door Controllers

All Paxton door controllers can be used alongside each other, making it easy for installers to find the best solution for each individual site.

Wired IP access control - Net2 plus door controller

Net2 plus is Paxton's most powerful door controller, which uses TCP/IP technology to allow direct connection to the IP network, saving time with minimal wiring needed.

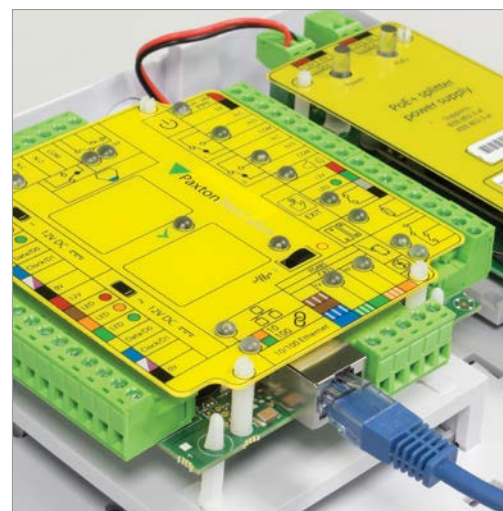
- Use existing LAN or RS485 infrastructure on a site
- Easy installation with minimal wiring
- Future proof and easily scalable
- Create more site opportunities



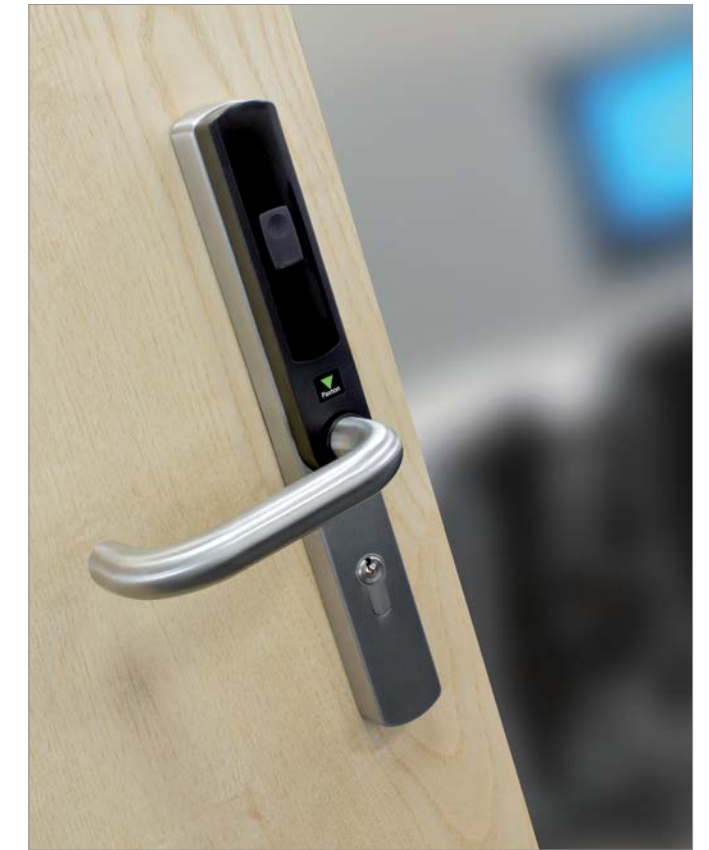
Net2 plus door controller with PoE

Power over Ethernet is a technology that allows both power and data to be streamed along the same Ethernet cable. Net2 plus with PoE as a power source makes installations quick and easy.

- Enjoy all the benefits of Net2 plus, with a single cable for power and data
- Choose to use mains or PoE power supply
- Installation is more efficient and convenient
- Save time and money on extra cabling



Wireless IP access control – Net2 PaxLock



Net2 PaxLock is a networked access control solution in a door handle. It communicates wirelessly to the server PC via a wireless bridge, reducing cabling and installation time. Net2 PaxLock easily replaces an existing door handle.

- Communicates using Net2Air technology, Paxton's secure and reliable wireless protocol
- Genuine online wireless system
- Full battery management system
- MIFARE® or Net2 token compatible options are available
- Also available with or without key override
- No wiring necessary

Net2 nano door controller

Net2 nano is a wireless door controller, using secure wireless technology to communicate to the server PC.

- Communicates using Net2Air technology, Paxton's secure and reliable wireless protocol
- Minimal wiring needed
- Easy installation and configuration



Straightforward and easy to use

- No need for specialist technical knowledge
- Easily add or delete system users, staff and visitors

Simple management

- Free software upgrades
- Install free of charge to multiple PCs

High security

- Lockdown a building at the touch of a button
- Prevent unauthorised users from sharing tokens

Smooth HR processes

- Keep track of staff hours and holiday
- Design ID cards that double up as access cards

Access Control Software

Net2 is easy to use with excellent features, designed to make the management of any building incredibly simple. Your customers can be confident in using the software in under two hours.



Building control

- Control access for groups of doors in a building
- Set the system to switch off utilities at a certain time

Integrate with CCTV, fire and intruder alarms

- Open fire doors in the event of the fire alarm going off
- Generate a report of who's in the building in the event of a fire
- Quickly view CCTV footage related to each door in a building
- Control alarm settings for separate access control units in different areas

Software Development Kit

- Create bespoke applications that integrate with access control
- Customers with extra requirements can customise their Net2 system

Net2 Software Features

Paxton offer two versions of Net2 software for use with the Net2 access control system. Developed to be familiar to Windows users, Net2 software is very easy to learn for both you and your customers.

Net2|Lite

Free, simple and reliable access control software for Net2, ideal for getting your system up and running.

Net2|Pro

The intelligent Net2 software from Paxton. Net2 Pro offers great features that move beyond simple access control.

Feature	Lite	Pro
Multiple clients	•	•
Free upgrades	•	•
CCTV integration	•	•
Site graphics	•	•
Triggers and actions	•	•
Intruder alarm integration*	•	•
Net2 Entry integration	•	•
Biometric integration	•	•
Landlord Tenant		•
Timesheet & Timeline*		•
Card designer		•
Roll call and muster reporting*		•
Fire alarm integration*		•
Anti-passback*		•
Security lockdown*		•
Multi-zone intruder alarm integration*		•
Areas		•
Customisable welcome page		•

* Not available with wireless products

System Integration

Net2 software is designed to easily integrate with other security systems, so you can offer your customers a complete solution. By integrating with other security systems your customers can enjoy more streamlined security for their building.



Intruder alarm

- Save time by integrating Net2 with your intruder alarm and reduce false alarms
- Control your intruder and access systems as one, across different areas of the building



Fire alarm

- Integrate Net2 with your fire alarm and program your system to automatically open fire doors in the event of an emergency and improve safety



Roll call and muster

- Set your system to generate an automatic roll call report when the fire alarm goes off. This helps to identify exactly who is safe once the building has been evacuated



CCTV

- Streamline your Net2 system with CCTV for a quick, efficient way to view footage related to what's going on at each door
- Review CCTV footage from within your Net2 system



Biometrics

- Net2 integrates with leading biometric readers, allowing enrolment of biometric data within Net2
- Open up new market opportunities from high security sites by offering biometrics integration with Net2 access control

Readers and Keypads

Due to the wide range of site requirements, Paxton offer a variety of readers and keypads suitable for use with Net2. This includes readers and keypads with vandal resistant, energy saving and weatherproof capabilities.

P series

The P series range of readers is Paxton's most popular and comprises four readers ranging in size from the P38 to the P200. A P38 fits neatly onto a door frame while the size of the P200 creates a longer token read range. All P series readers are supplied with two fascias, one black and one white. We supply free fascia replacements to keep your sites looking smart.



Energy saving reader

The energy saving reader is used to ensure that electrical equipment is only switched on when an authorised user card is inserted and retained, ideal for energy saving and safety.



Marine reader

The Marine reader is made of marine grade stainless steel and is built to withstand the elements as well as look stylish.



Long range reader

The Long range reader is designed for vehicle access, its read range of 5m means that the token can be detected from within a vehicle, for car parks, barriers and wheel chair user access.



KP75 MIFARE® Keypad

The KP75 MIFARE® keypad has a durable, metal frame design and is suitable for both exterior and interior use.

For the full range of readers and keypads visit <http://paxton.info/2178>

Door Entry - Net2 Entry

Net2 Entry is our smart, simple audio/video door entry system, for versatile building management. With inbuilt access control, Net2 Entry is perfect to use as part of a Net2 access control system. Advanced functionality and intuitive operation means you can offer your customers the ultimate security solution.



- Just 3 components - monitor, panel and door controller
- Slimline panel available in flush, surface and rain-hood versions – suitable for a range of environments
- SIP compatibility – the door can be answered from smartphone, tablet or PC*
- Intruder alarm integration – customers set the alarm in Net2 from the Net2 Entry panel for extra convenience
- Super tough IK10 rated vandal resistant panel option in 316L marine grade stainless steel
- Reads Paxton and MIFARE® token technology
- Pan/tilt camera functionality to capture an angled view
- Low light sensitivity camera – ideal for use day or night
- Standard panel features high contrast backlit keypad
- Add a secondary IP camera for higher security sites
- Video voicemail, enables visitors to leave a video message
- Available in two variants: the Net2 Entry Standard panel in anthracite grey and the Net2 Entry VR panel in stainless steel
- IP55 rating – suitable for all weather conditions

*3rd party app required

Additional Features Your Customers Will Like



Hands free

Paxton offer access control solutions with hands free capabilities, a great way of improving movement around a site.

By installing a hands free interface alongside a door controller, you can help a site to comply with health and safety requirements. A user's token can be read from within their pocket or bag and the door unlocks on approach.

- Ideal for accessing gates or barriers
- Loading doors can open on approach
- Easy access for wheelchair users or the elderly



Energy saving

Net2 has energy saving solutions, to help customers to save money and reduce their carbon footprint.

- Manage heating, water consumption, lighting and air conditioning
- Program utilities to switch on or off at a specific time
- Net2 can recognise when facilities are being used, making sure empty buildings don't cost money



Health and safety

Features in Net2 can help customers to meet health and safety regulations.

- Stop people from accessing sensitive areas on site. This reduces the risk of accident to staff and customers, and gives managers peace of mind
- Set permissions in Net2 software so that only trained staff can access dangerous machinery

Where Can I Sell Net2?

Paxton's Net2 is a scalable solution that can be sold to a variety of sites, from halls of residence to leisure facilities. Here are some examples of sites you can sell to with Net2, opening up new market opportunities.



Schools



Clubs and associations e.g. golf clubs



Research and development companies



Universities



Healthcare

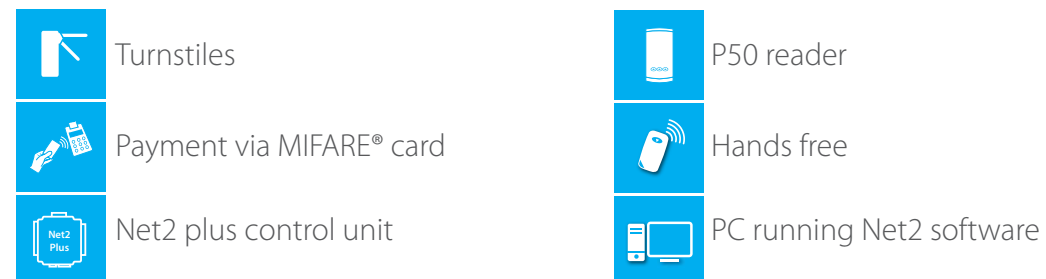
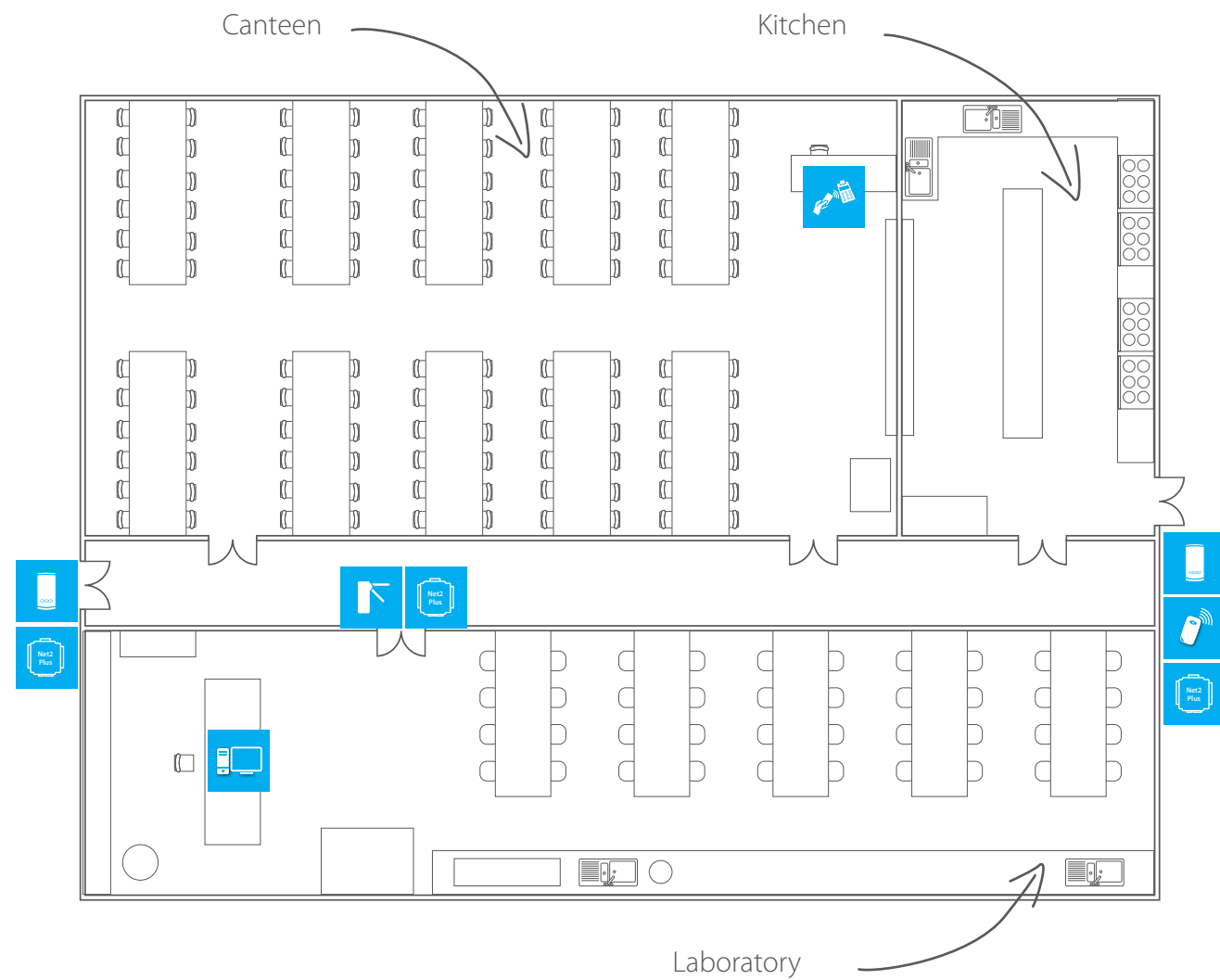


Food industry and catering

Example site - University Net2 MIFARE® cards and anti-passback

This plan shows a typical university site.

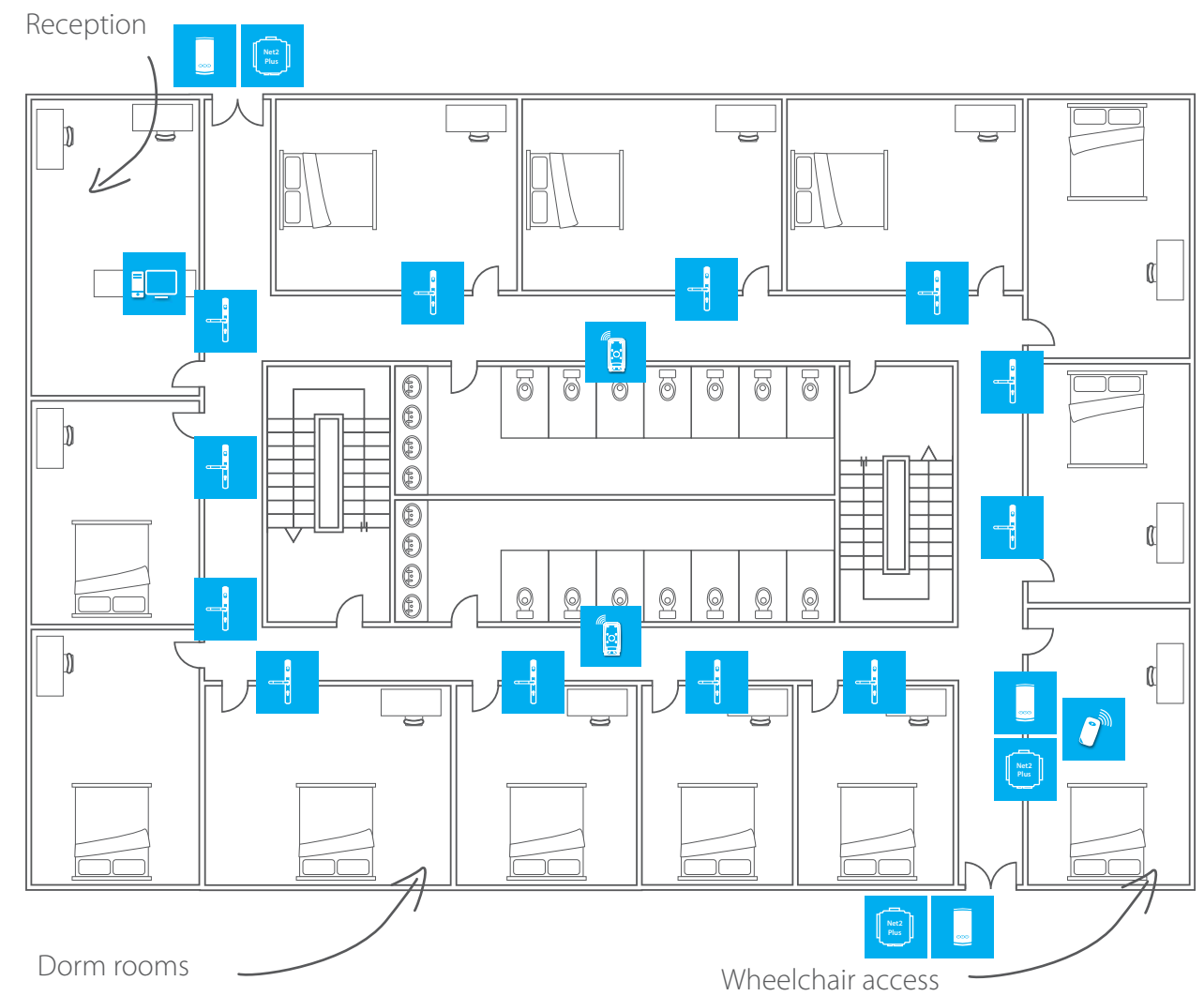
- Turnstiles with anti-passback prevents students sharing tokens
- MIFARE® cards allow cashless vending via a prepaid account
- Hands free at the kitchen doors allow easy access for deliveries
- P50 reader fitted to the external door prevents unauthorised users from entering the building



Example site - Halls of residence Net2 PaxLock

This plan shows a typical halls of residence.

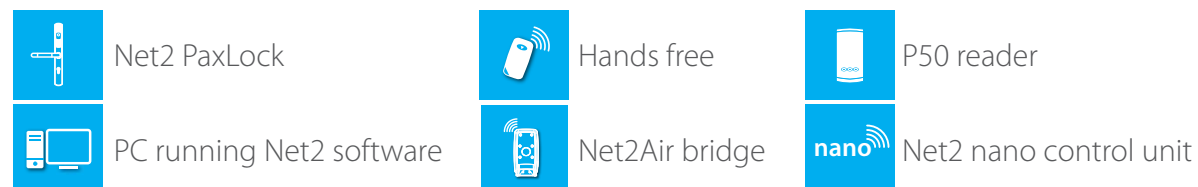
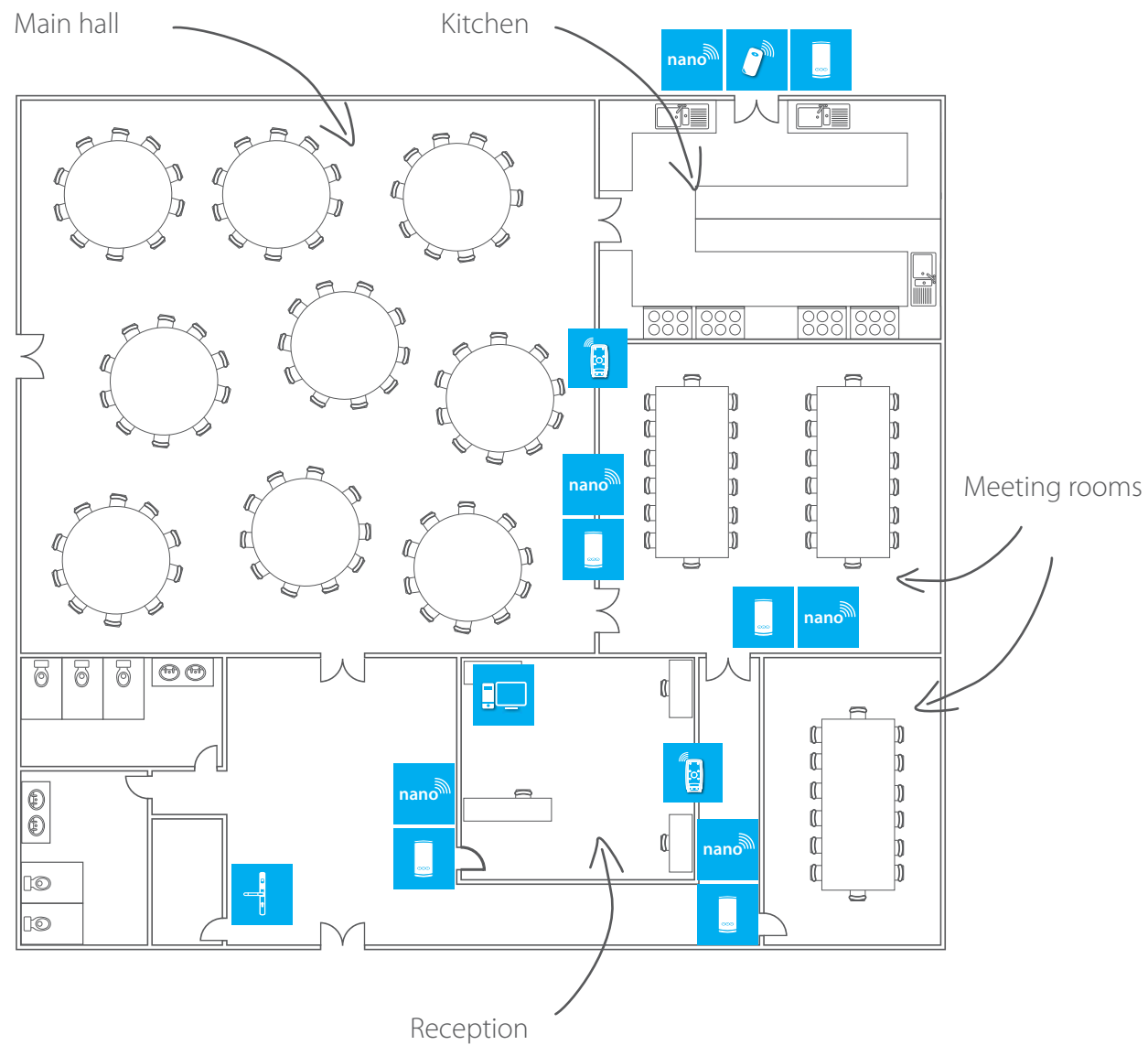
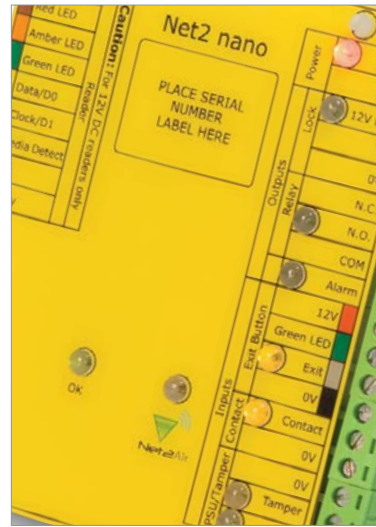
- P50 readers and Net2 plus door controllers fitted on external doors for a discreet but effective security solution. IPX7 waterproof rating makes them ideal for external use
- Net2 PaxLocks on the doors to students' rooms mean a wireless solution and no cabling needed
- A PC with Net2 software is located in reception to manage access from a central location
- Hands free access control allows access for wheelchair users



Example site - Listed building Net2 nano

This plan shows a listed government building.

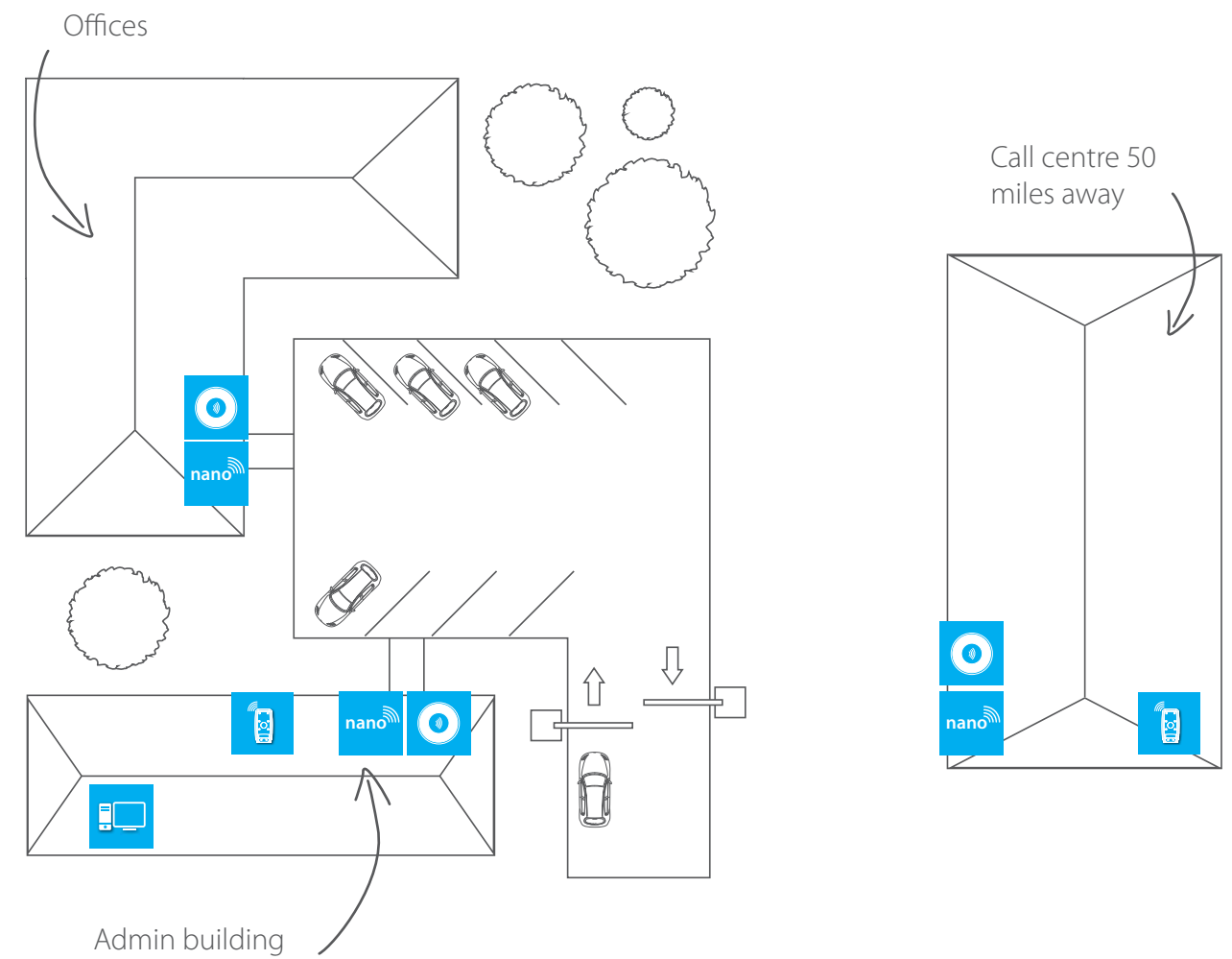
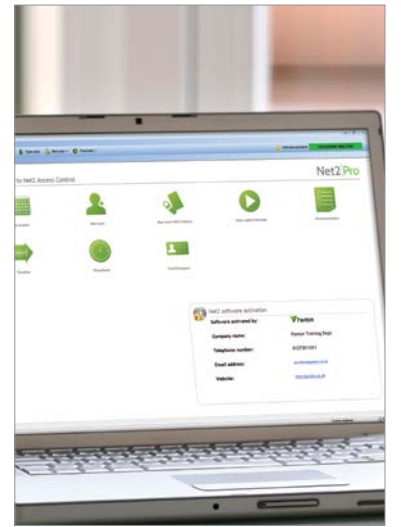
- Net2 nano provides a wireless solution meaning no damage to architecture or interiors - minimal cabling
- Net2 PaxLock on internal doors offers a secure wireless solution
- A PC running Net2 software means the access control system is monitored from a central location



Example site - Multi-site offices Net2 software

This plan shows multi-site offices.

- Security for multiple sites can be managed from a central PC, meaning security can be controlled and monitored from just one place
- Building control features within Net2 software can control lighting, heating, air conditioning and lifts
- Net2 software includes a card designer package free of charge, to give staff professional ID/access cards
- Unique readers can enhance the look of a building where aesthetics matter



Next Steps

Paxton are here to support you the whole way, to help you feel completely confident in quoting, installing and selling Net2 access control. This support continues long after your first installation, with industry leading technical help, educational seminars, free training and professional sales literature.

What do I do next?

Free training

We offer practical training for our complete range of networked, standalone and door entry products. Sessions are designed to provide you with the essential knowledge needed to install Paxton products quickly and efficiently.

- Ensure accurate installation
- Reduce time on site
- Courses are free of charge
- Materials and equipment provided

For more information and to book a session, go to <http://paxton.info/1940>.



Book a visit from a Paxton expert

You can book a sales visit from one of our access control experts. We understand that as well as installing access control, it's important to know how to sell it. We can give you tips on how to sell the benefits of Net2 access control to your customers.

To book a sales visit, email sales@paxton.co.uk or call 01273 811011.



Sales literature

We provide sales literature to help you sell Net2 access control to your customers. Download or order printed leaflets on the Net2 product range. Impress your customers with professionally designed leaflets to show them how access control can benefit their business.

You can download sales literature from our website www.paxton.co.uk or to order printed literature call 01273 811011.



Net2 Integration

As UK market leaders in access control, Paxton want to ensure that we are providing the most sophisticated solutions available. We do this by working with quality manufacturers to provide the best of breed solutions and making them available to you. You can see a map of our Net2 integration partners at <http://paxton.info/2482>.



Paxton 5 Year Guarantee and Ultimate Returns Policy

We offer a five year guarantee on all our products.

All you have to do is send us your damaged Paxton product within five years of purchase and we will repair it or send you a new one. You will receive a full report via email and your new product will be sent back to you.

We want to make life as easy as possible for installers of Paxton products. Our five year guarantee and Ultimate Returns Policy help us to do this successfully.



Who Can I Contact?

Our UK distributors are listed below. We regularly review their stock and make sure that it is up-to-date, correctly stored and free from defects. To ensure the quality of your Paxton system, we advise that you purchase only through a franchised distributor.



ADI Global Distribution
Commercial Centre
Chatsworth House
Unit 4 Hollins Brook, Roach Bank Road
Bury BL9 8RN

0161 767 2900
www.adi-global.co.uk



Advanced Access Ltd
Unit 1B Spinney View
Stone Circle Road
Round Spinney
Northampton NN3 8RF

01604 647555
www.advanced-access.co.uk



Alarm Supplies
12e Eurogateway
Port Dundas Business Park
100 Borron Street
Glasgow G4 9XG

0141 353 1354
www.alarm-supplies.com



Aldridge Security Ltd
Silca House
30-34 Eagle Wharf Road
London N1 7EG

08444 125101
www.aldridgesecurity.co.uk



Enterprise Security
Unit 31-34 Brockley Cross Business Centre
96 Endwell Road
Brockley
London SE4 2PD

0207 732 3826
www.enterprisesecuritydistribution.com



Mayflex UK Ltd
Excel House
Junction Six Industrial Park
Electric Avenue
Birmingham B6 7JJ

0800 881 5199
www.mayflex.com



Norbain SD Ltd
210 Wharfdale Road
Winnersh Triangle
Wokingham
Berkshire RG41 5TP

North: 01253 894488
South: 0118 9125000
www.norbain.co.uk



Oprema Ltd
Unit 22 Freemans Parc
Penarth Road
Cardiff CF11 8EQ

029 2064 1509
www.oprema.co.uk



Security Supplies Ltd
Unit 5 Fulcrum 4
Solent Way
Fareham
Hampshire PO15 7FT

01489 563 400
www.security-supplies.co.uk



Paxton Access Ltd
Paxton House
Home Farm Road
Brighton
East Sussex
BN1 9HU
UK

01273 811011
support@paxton.co.uk
www.paxton.co.uk

MIFARE® is a registered trademark of NXP B.V. and is used under license.
All information and specifications correct at the point of publication, but may be subject to change without notice.