

STRUCTURAL & ARCHITECTURAL DETAILERS

You Design It, We Model, Detail and Deliver the Drawings
All in a days work
Location is not an issue in this digital age to get things done



3D STRUCTURAL DETAILING SERVICES LIMITED

3DSDS



Everything we do for our Clients is bespoke, i.e. all elements are individually modelled to your requirements.

For more information,
please email
enquiries@3dsds.co.uk
or give us a call on
+44 (0) 780 101 0100
Follow us on
LinkedIn and or Facebook

3D STRUCTURAL DETAILING SERVICES LIMITED - (3DSDS)

We are passionate about 3D Structural & Architectural Detailing, but this is not all we do.

PORTFOLIO

For more information, please email enquiries@3dsds.co.uk
or give us a call on **+44 (0) 780 101 0100**

IDEA StatiCa®



STRUCTURAL & ARCHITECTURAL DETAILERS

You Design It, We Model, Detail and Deliver the Drawings
All in a days work
Location is not an issue in this digital age to get things done



Everything we do for our Clients is bespoke, i.e. all elements are individually modelled to your requirements.

ABOUT

3DSDS was founded by Teresa Benson-Shettle in 2018, and the main mission was to provide affordable professional services to the Construction Industry. Having been in the construction industry for over 25 years with experience using AutoCAD R9 to 2021, Advance Steel, Revit, Creo Elements, FreeCAD, SolidWorks, Draftsight 2D and SketchUp and many more.

3DSDS uses the latest AUTODESK Software and has experience in producing 2D, 3D, Structural Detailing, Range Design to JSP 403, Planning Drawings and QMS for ISO9001 standards.

Teresa also worked in the past at Graitec UK, developing, teaching and supporting AutoCAD and Advance Steel.

In her years as a Structural Technician and Project Engineer she has worked on various projects for construction that have been located all around the world, these included the following:-

3D Printed Projects, Balconies, Bespoke Metalwork (Cage Units, Chairs, Park Benches, Shelving Units, Tables), Fire Escape Staircases (Spiral and Straight), Mezzanine Floors, Portal Frame Structures, Residential and Commercial Steelwork, Sheet Metal Work, Shooting Ranges (MOD), Timber Frame Structures & Telecommunication Towers.

When Teresa started the Company, her vision was to provide a professional affordable service in the Steel Industry and as a company work closely with our clients to produce the design and fabrication drawings with all the necessary documentation using the specifications provided.

3DSDS will firstly produce drawings for approval once approved we will complete the project and issue all the necessary documentation and drawings for fabrication and if required, we can offer Structural Calculations as we can use independent Structural Engineer.

For more information,
please email
enquiries@3dsds.co.uk
or give us a call on
+44 (0) 780 101 0100
Follow us on
LinkedIn and or Facebook



STRUCTURAL & ARCHITECTURAL DETAILERS

You Design It, We Model, Detail and Deliver the Drawings
All in a days work
Location is not an issue in this digital age to get things done



3D STRUCTURAL DETAILING SERVICES LIMITED

3DSDS



Everything we do for our Clients is bespoke, i.e. all elements are individually modelled to your requirements.

OUR SERVICES

2D Drafting Services
3D Modeling & Detailing Drafting Services
3D Prototype Printing
CAD Training – AutoCAD & Advance Steel
Technical Support – AutoCAD & Advance Steel
Printing Services – A1, A2, A3 & A4
Conversion to CAD – PDFs and Image Files to CAD

New Services
Landscape Design
Rendered Visuals & Videos

For more information,
please email
enquiries@3dsds.co.uk
or give us a call on
+44 (0) 780 101 0100
Follow us on
LinkedIn and or Facebook



STRUCTURAL & ARCHITECTURAL DETAILERS

You Design It, We Model, Detail and Deliver the Drawings
All in a days work
Location is not an issue in this digital age to get things done



Everything we do for our Clients is bespoke, i.e. all elements are individually modelled to your requirements.

TESTIMONIALS

Alan Staton Bower-Bennett Ltd

"Teresa has a vast technical knowledge and she understands what she's doing. She's aware of contractual commitments and always works towards helping you achieve them. Teresa is personable and is easy to communicate with. She grasps the problem and is business like in solving it."

Matt Covil - Cubic Defense (UK)

"We sat a 3-day introduction to AutoCAD course with 3DSDS, (Teresa) and it was delivered on point and everything was tailored to our needs. The course was delivered with a lot of hands-on work, (which is a must) and documented "how to" information for reference was also handed out and very useful. If you are looking to get started with AutoCAD, I would highly recommend this course!"

Eddie Gevorkian CEO 1 Techno Canada

"Teresa was instrumental helping my new team at 1Techno (Distributor for GRAITEC) get on their feet. For the past five years she has been a gem, putting her heart into every project. Her people skills are excellent."

Peter Scannell - Macai Projects Ltd

"3DSDS provided a fast, efficient and effective service, often delivering what was asked ahead of schedule. Any queries were dealt with straight away. I would have no hesitation in using them again or recommending them to others."

Russ Uridge - DesignBYRuss

"Teresa is an exceptional tutor. Very thorough with very in-depth knowledge of Advance steel as well as the fabrication and erection processes. She has very good communication skills and is a great judge of what you need to proceed. Every minute was valuable, and I would recommend her to anyone of any ability."

More can be found on our website at <https://www.3dsds.co.uk/recommendations>

For more information,
please email
enquiries@3dsds.co.uk
or give us a call on
+44 (0) 780 101 0100
Follow us on
LinkedIn and or Facebook



STRUCTURAL & ARCHITECTURAL DETAILERS

**You Design It, We Model, Detail and Deliver the Drawings
All in a days work**
Location is not an issue in this digital age to get things done



We've been approved by
approvedbusiness.co.uk

UK
SBD

UK Small
Business
Directory

CYLEX

3D STRUCTURAL DETAILING SERVICES LIMITED

3DSDS



Everything we do for our Clients is bespoke, i.e. all elements are individually modelled to your requirements.

For more information,
please email
enquiries@3dsds.co.uk
or give us a call on
+44 (0) 780 101 0100
Follow us on
LinkedIn and or Facebook

THANK YOU

It has been a tough year for all freelance business owners due to COVID but with perseverance and dedication 3DSDS are celebrating 3 Years in Business.

3DSDS would like to send out a massive thank you to all our Existing Clients and New Clients for making our Third Year in Business such a success.



If you need an extra helping hand to get those jobs out the door, then please get in touch for a chat to discuss your next project.

Teresa Benson-Shettle

STRUCTURAL & ARCHITECTURAL DETAILERS

You Design It, We Model, Detail and Deliver the Drawings
All in a days work
 Location is not an issue in this digital age to get things done



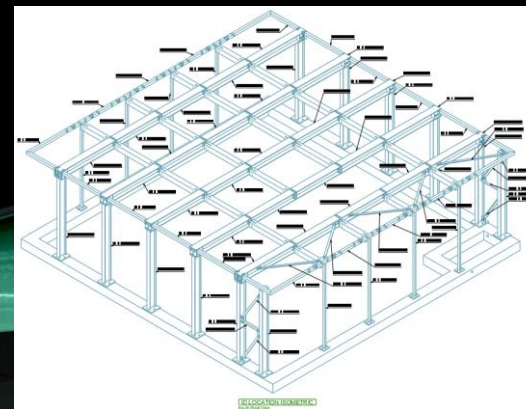
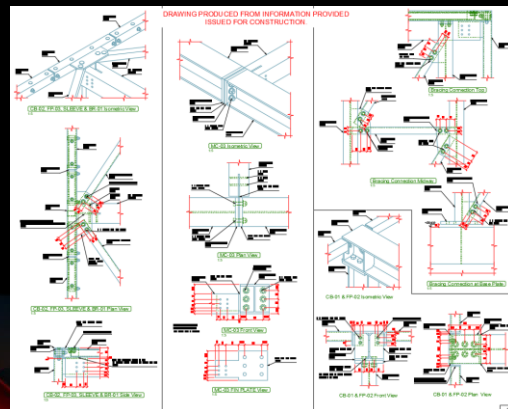
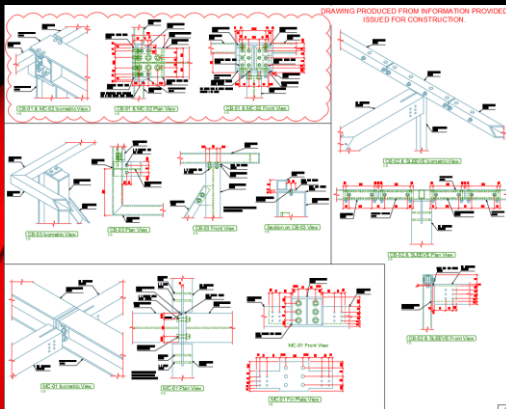
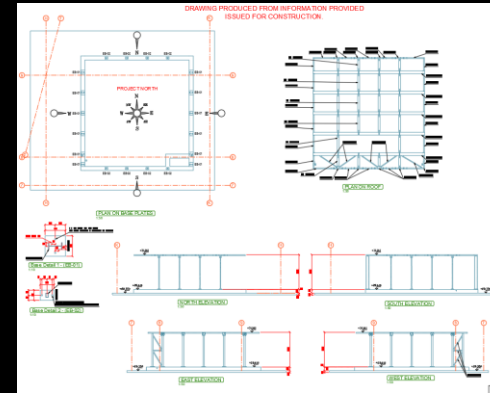
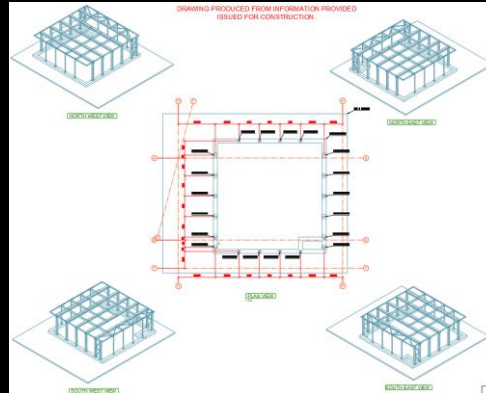
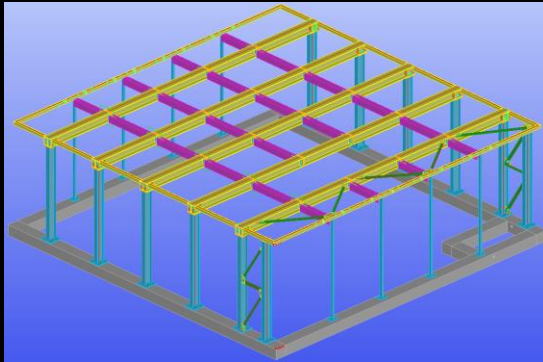
3D STRUCTURAL DETAILING SERVICES LIMITED

3DSDS



Everything we do for our Clients is bespoke, i.e. all elements are individually modelled to your requirements.

RECENTLY COMPLETED PROJECT Out for Fabrication / Construction.



For more information,
 please email
enquiries@3dsds.co.uk
 or give us a call on
 +44 (0) 780 101 0100
 Follow us on
 LinkedIn and or Facebook

IDEA StatiCa

AUTODESK
 AUTOCAD
 2022

AUTODESK

AUTODESK
 ADVANCE STEEL
 2022

AUTODESK

AUTODESK
 REVIT 2022

AUTODESK

STRUCTURAL & ARCHITECTURAL DETAILERS

You Design It, We Model, Detail and Deliver the Drawings
All in a days work
Location is not an issue in this digital age to get things done

We've been approved by
approvedbusiness.co.uk

UK
SBD
UK Small
Business
Directory

CYLEX

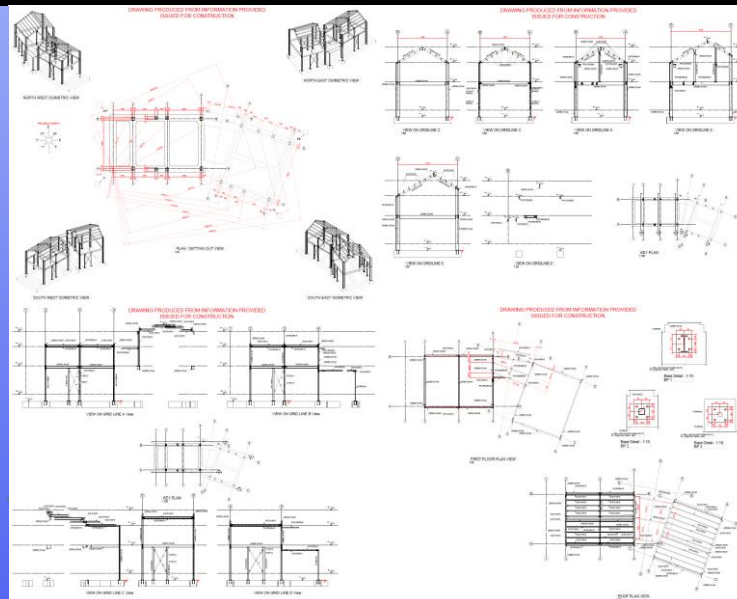
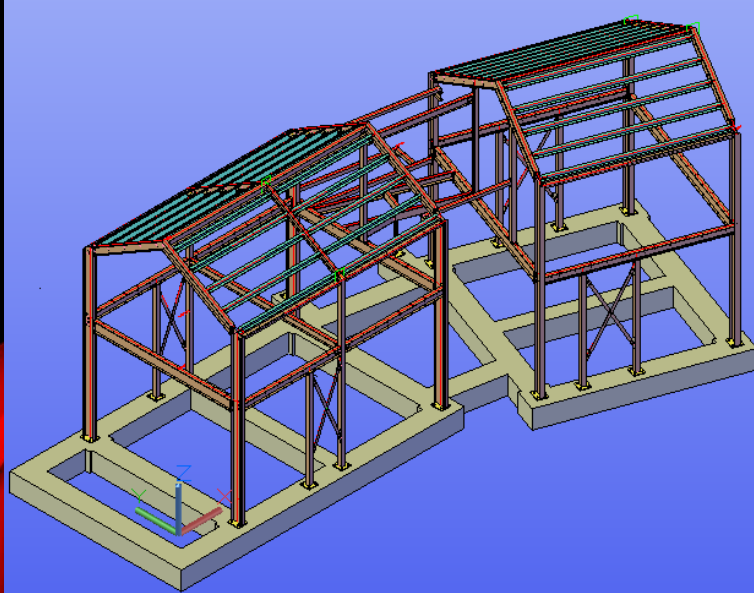
3D STRUCTURAL DETAILING SERVICES LIMITED

3DSDS



Everything we do for our Clients is bespoke, i.e. all elements are individually modelled to your requirements.

RECENTLY COMPLETED PROJECT Out for Fabrication & Construction.



For more information,
please email
enquiries@3dsds.co.uk
or give us a call on
+44 (0) 780 101 0100
Follow us on
LinkedIn and or Facebook

IDEA StatiCa®

**AUTODESK®
AUTOCAD®
2021**

AUTODESK®

**AUTODESK®
ADVANCE STEEL
2021**

AUTODESK®

**AUTODESK®
REVIT 2021**

AUTODESK®

STRUCTURAL & ARCHITECTURAL DETAILERS

You Design It, We Model, Detail and Deliver the Drawings
All in a days work
Location is not an issue in this digital age to get things done



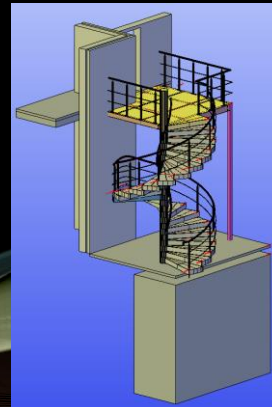
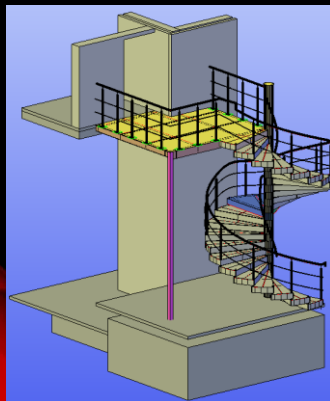
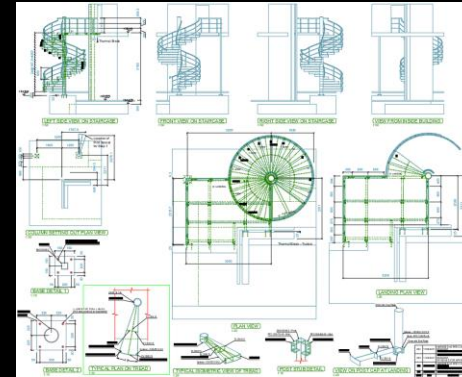
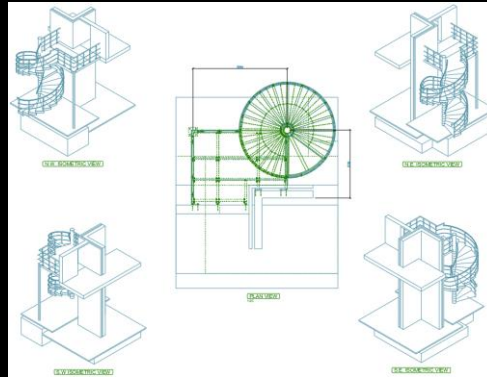
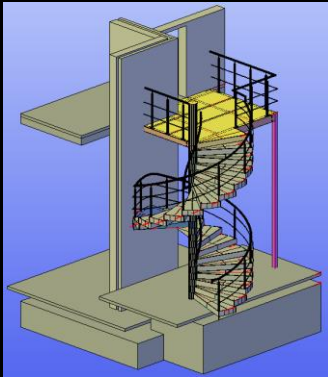
3D STRUCTURAL DETAILING SERVICES LIMITED

3DSDS



Everything we do for our Clients is bespoke, i.e. all elements are individually modelled to your requirements.

RECENTLY COMPLETED PROJECT Out for Approval – 3 Spiral Staircases.



For more information,
please email
enquiries@3dsds.co.uk
or give us a call on
+44 (0) 780 101 0100
Follow us on
LinkedIn and or Facebook

StatiCa

AUTODESK
AUTOCAD
2021

AUTODESK
ADVANCE STEEL
2021

AUTODESK
REVIT 2021

AUTODESK

STRUCTURAL & ARCHITECTURAL DETAILERS

You Design It, We Model, Detail and Deliver the Drawings
All in a days work
Location is not an issue in this digital age to get things done

We've been approved by
approvedbusiness.co.uk

UK
SBD
UK Small
Business
Directory

CYLEX

3D STRUCTURAL DETAILING SERVICES LIMITED

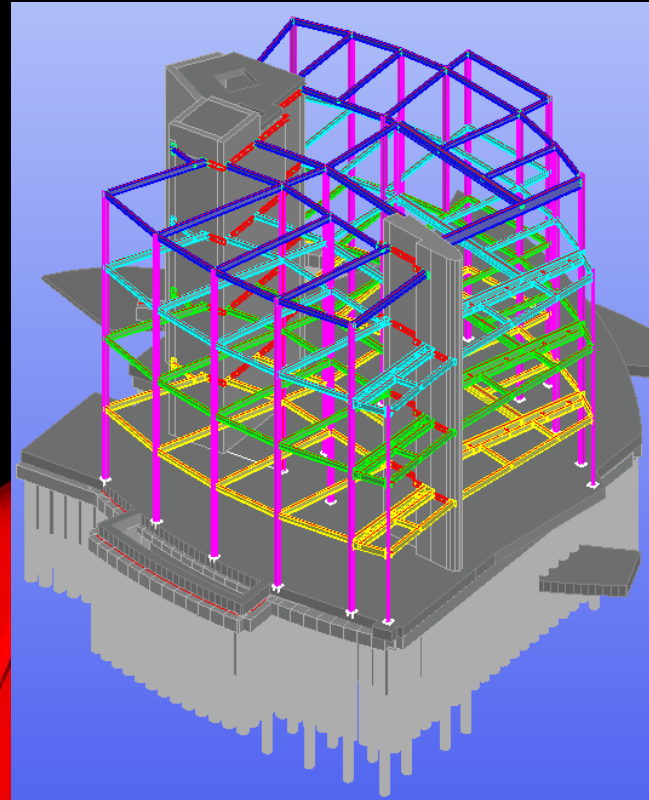
3DSDS



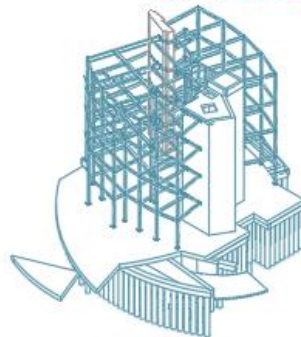
Everything we do for our Clients is bespoke, i.e. all elements are individually modelled to your requirements.

RECENTLY COMPLETED PROJECT Out for Fabrication & Construction.

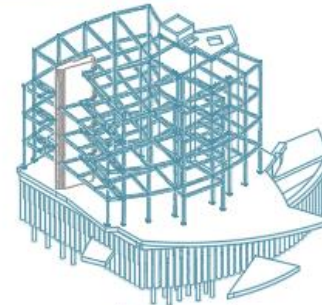
For more information,
please email
enquiries@3dsds.co.uk
or give us a call on
+44 (0) 780 101 0100
Follow us on
LinkedIn and or Facebook



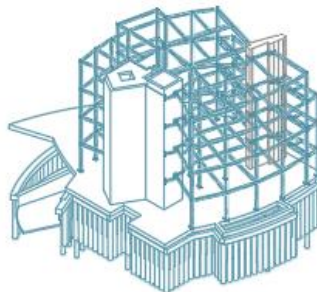
DRAWING PRODUCED FROM INFORMATION PROVIDED



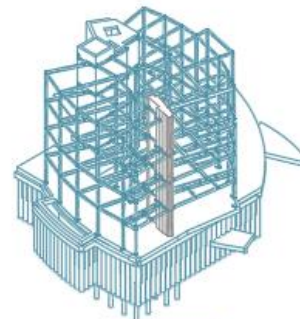
FRONT-LEFT PERSPECTIVE VIEW



FRONT-RIGHT PERSPECTIVE VIEW



BACK-LEFT PERSPECTIVE VIEW



BACK-RIGHT PERSPECTIVE VIEW

READY FOR CONSTRUCTION

IDEA StatiCa

AUTODESK
AUTOCAD
2021

AUTODESK
ADVANCE STEEL
2021

AUTODESK
REVIT 2021

AUTODESK

AUTODESK

AUTODESK

STRUCTURAL & ARCHITECTURAL DETAILERS

You Design It, We Model, Detail and Deliver the Drawings
All in a days work
Location is not an issue in this digital age to get things done

We've been approved by
approvedbusiness.co.uk

UK
SBD
UK Small
Business
Directory

CYLEX

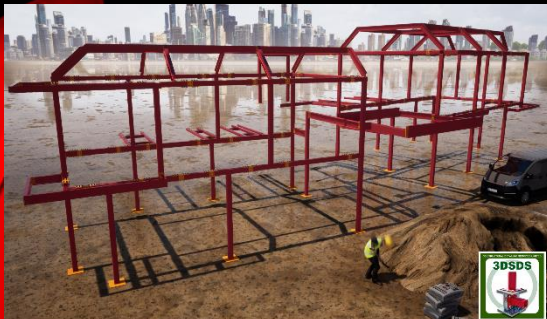
3D STRUCTURAL DETAILING SERVICES LIMITED

3DSDS



Everything we do for our Clients is bespoke, i.e. all elements are individually modelled to your requirements.

RECENTLY COMPLETED PROJECTS



For more information,
please email
enquiries@3dsds.co.uk
or give us a call on
+44 (0) 780 101 0100
Follow us on
LinkedIn and or Facebook

IDEA StatiCa®

AUTODESK®
AUTOCAD®
2021

AUTODESK®
ADVANCE STEEL
2021

AUTODESK®
REVIT® 2021

STRUCTURAL & ARCHITECTURAL DETAILERS

You Design It, We Model, Detail and Deliver the Drawings
All in a days work
Location is not an issue in this digital age to get things done

We've been approved by
approvedbusiness.co.uk

UK
SBD
UK Small
Business
Directory

CYLEX

3D STRUCTURAL DETAILING SERVICES LIMITED

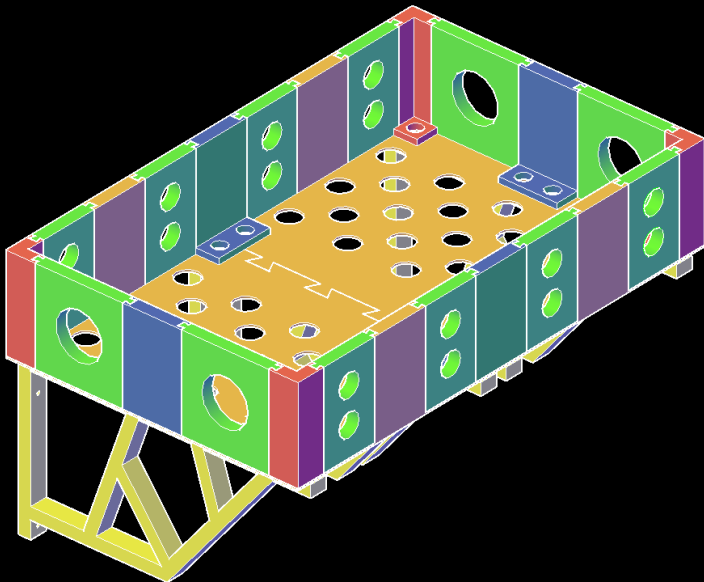
3DSDS



Everything we do for our Clients is bespoke, i.e. all elements are individually modelled to your requirements.

VEGETABLE CONTAINER – 3D PRINTED

We recently got asked to model and 3D print a vegetable container for a client on the Isle of Wight. It had to be wall mounted and had to be easily dismantled if necessary - so after various designs we produced this one that the client liked, and all parts were 3D Printed:- Brackets, Base, Corners, Infills and most of all Nuts and Bolts. Easily assembled using the 3D Printed Nuts and Bolts.



For more information,
please email
enquiries@3dsds.co.uk
or give us a call on
+44 (0) 780 101 0100
Follow us on
LinkedIn and or Facebook

STRUCTURAL & ARCHITECTURAL DETAILERS

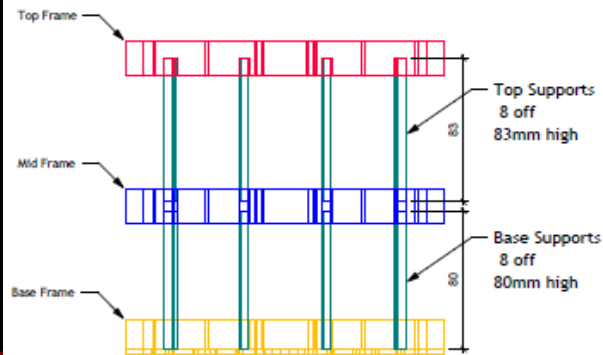
You Design It, We Model, Detail and Deliver the Drawings
All in a days work
Location is not an issue in this digital age to get things done



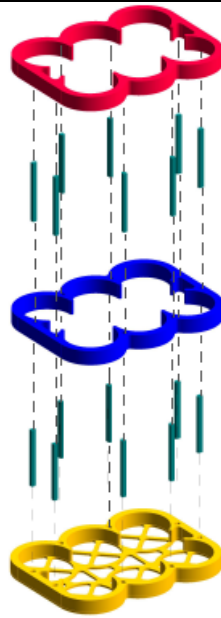
Everything we do for our Clients is bespoke, i.e. all elements are individually modelled to your requirements.

12 CAN ORGANISER – 3D PRINT

We recently got asked to model and 3D print a 12 Can Organiser for a company called "And That's the Wrap" located on the Isle of Wight. This organiser was to keep the Cans stored together with a space in between the cans for an Ice Pack to keep them chilled in a cool bag.



Parts Location



Exploded View



Assembled Unit



And That's A Wrap are a mobile catering unit that specializes in hot and cold fresh wraps. They are located on Seaview Road in Cowes and can be booked for private events.

And That's a Wrap
Mobile Caterers
07881 707770

For more information,
please email
enquiries@3dsds.co.uk
or give us a call on
+44 (0) 780 101 0100
Follow us on
LinkedIn and or Facebook



STRUCTURAL & ARCHITECTURAL DETAILERS

You Design It, We Model, Detail and Deliver the Drawings
All in a days work
Location is not an issue in this digital age to get things done

We've been approved by
approvedbusiness.co.uk

UK
SBD

UK Small
Business
Directory

CYLEX

3D STRUCTURAL DETAILING SERVICES LIMITED

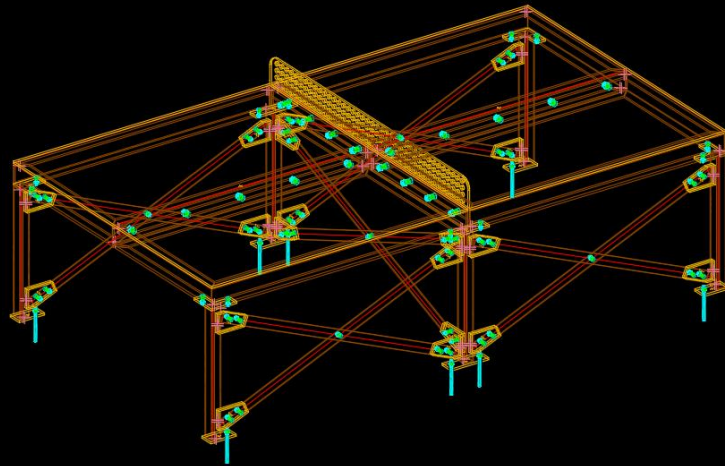
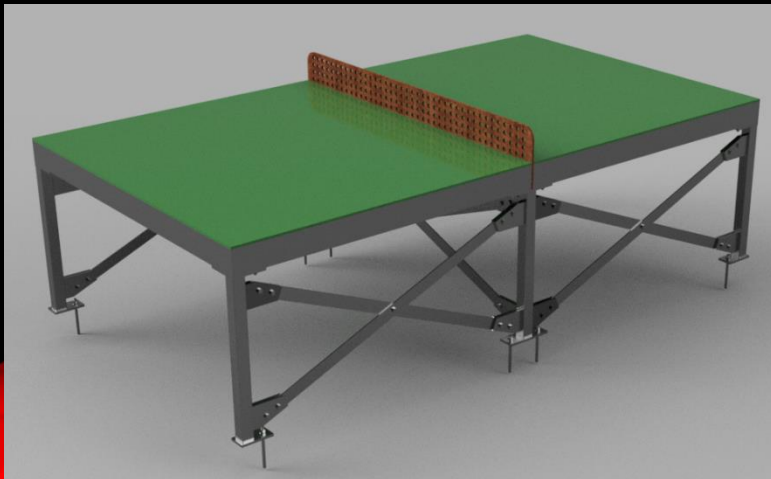
3DSDS



Everything we do for our Clients is bespoke, i.e. all elements are individually modelled to your requirements.

NOT THE NORMAL STEEL STRUCTURE

We recently got asked to model and generate the fabrication details for this Ping Pong Table for an office recreation room. Modeled in Advance Steel and Rendered using blender. – Modeled, drawings created and out the door in less than 2 Hours.



For more information,
please email
enquiries@3dsds.co.uk
or give us a call on
+44 (0) 780 101 0100
Follow us on
LinkedIn and or Facebook



STRUCTURAL & ARCHITECTURAL DETAILERS

You Design It, We Model, Detail and Deliver the Drawings
All in a days work
Location is not an issue in this digital age to get things done

We've been approved by
approvedbusiness.co.uk

UK
SBD
UK Small
Business
Directory

CYLEX

3D STRUCTURAL DETAILING SERVICES LIMITED

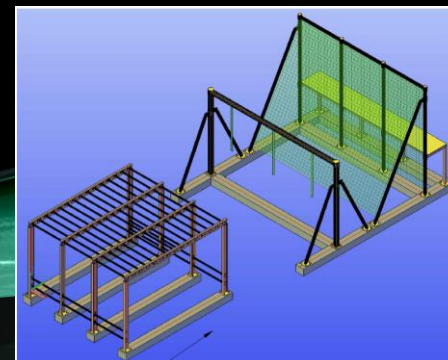
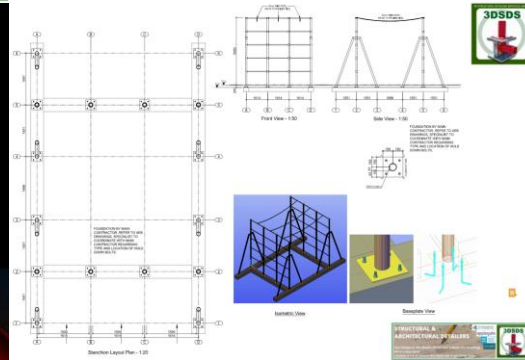
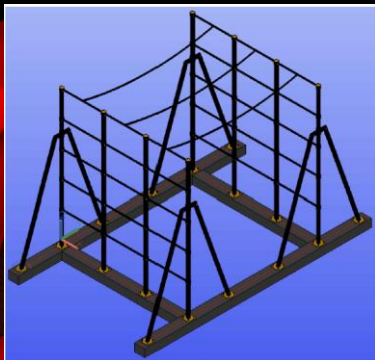
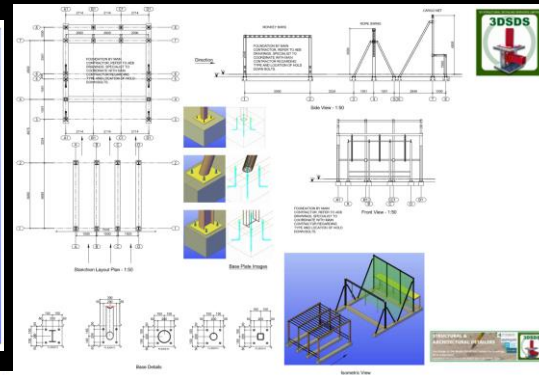
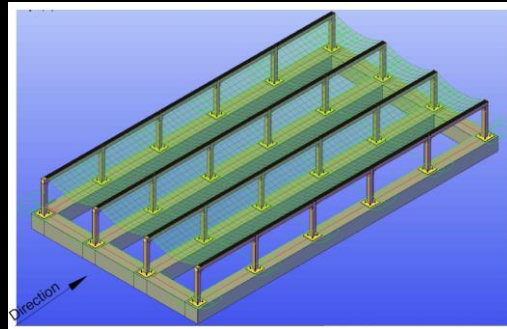
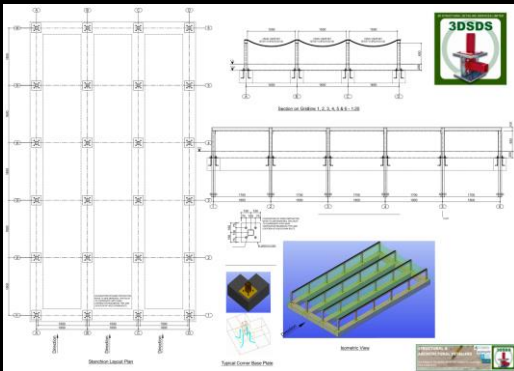
3DSDS



Everything we do for our Clients is bespoke, i.e. all elements are individually modelled to your requirements.

NOT THE NORMAL STEEL STRUCTURE – Part 2

We recently got asked to model and generate the fabrication details for these
Obstacles. Modeled in Advance Steel.



For more information,
please email
enquiries@3dsds.co.uk
or give us a call on
+44 (0) 780 101 0100
Follow us on
LinkedIn and or Facebook



STRUCTURAL & ARCHITECTURAL DETAILERS

You Design It, We Model, Detail and Deliver the Drawings
All in a days work
Location is not an issue in this digital age to get things done



3D STRUCTURAL DETAILING SERVICES LIMITED

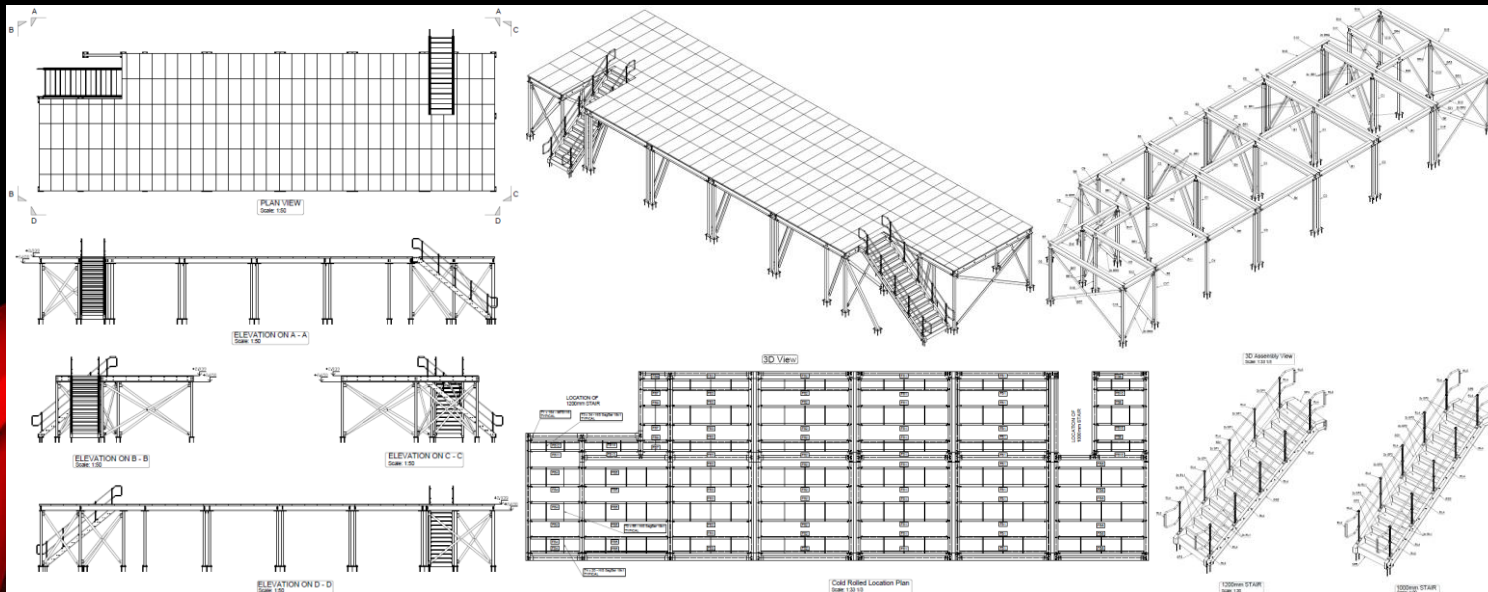
3DSDS



Everything we do for our Clients is bespoke, i.e. all elements are individually modelled to your requirements.

NEED EXTRA ROOM

We have recently been asked to model and generate the fabrication details of a mezzanine floor. The Mezzanine floor has been designed to 4.8kN/m^2 – Light Storage as indicated in BS 6399 - Part 1. All drawings with Structural Engineer. Mezzanine Handrail by others.



For more information,
please email
enquiries@3dsds.co.uk
or give us a call on
+44 (0) 780 101 0100
Follow us on
LinkedIn and or Facebook



STRUCTURAL & ARCHITECTURAL DETAILERS

You Design It, We Model, Detail and Deliver the Drawings
All in a days work
Location is not an issue in this digital age to get things done

We've been approved by
approvedbusiness.co.uk

UK
SBD
UK Small
Business
Directory

CYLEX

3D STRUCTURAL DETAILING SERVICES LIMITED

3DSDS



Everything we do for our Clients is bespoke, i.e. all elements are individually modelled to your requirements.

NEED EXTRA ROOM – cont.

Images of the Installed Mezzanine Floor.



StatiCa®

AUTODESK®
AUTOCAD®
2021

AUTODESK®
ADVANCE STEEL
2021

AUTODESK®
REVIT® 2021

AUTODESK®

STRUCTURAL & ARCHITECTURAL DETAILERS

You Design It, We Model, Detail and Deliver the Drawings
All in a days work
Location is not an issue in this digital age to get things done

We've been approved by
approvedbusiness.co.uk

UK
SBD
UK Small
Business
Directory

CYLEX

3D STRUCTURAL DETAILING SERVICES LIMITED

3DSDS



Everything we do for our Clients is bespoke, i.e. all elements are individually modelled to your requirements.

BRING YOUR DESIGNS TO LIFE

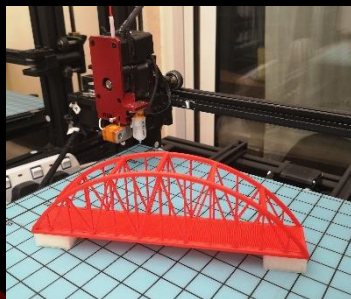
Have you ever wanted to see what your designs will look like before construction.

We can print your designs and deliver a 3D Model in just a few days.

Here is an image of a foot bridge scaled down and measures 210x80x35mm, the actual measurements would be 6m long x 1m wide.

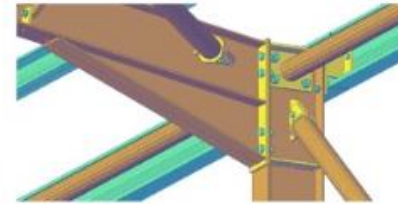
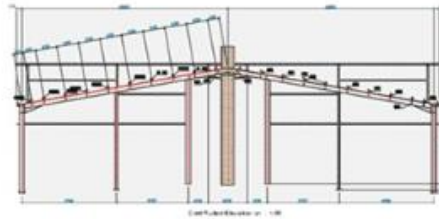
Also is a Spiral Staircase - 3D print measures 170mm high x 120mm diameter.

Various colours available including white.



For more information,
please email
enquiries@3dsds.co.uk
or give us a call on
+44 (0) 780 101 0100
Follow us on
LinkedIn and or Facebook





3D Structural Detailing Services Limited

Construction · Southampton, Hampshire

Design, Model, Detail, Deliver - All in a days work.

Follow us on LinkedIn & Facebook

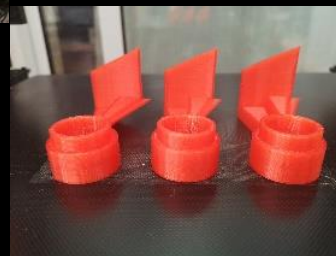
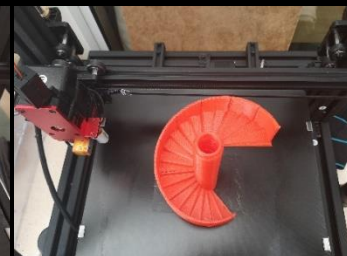
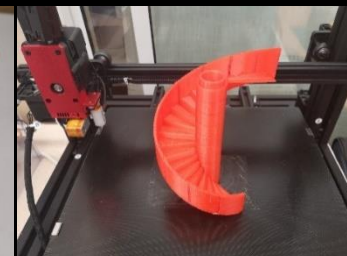
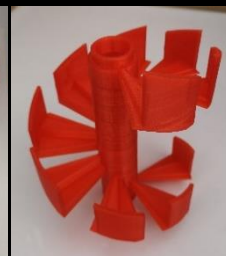
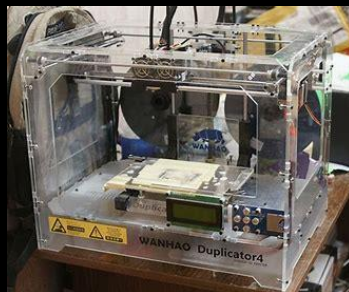
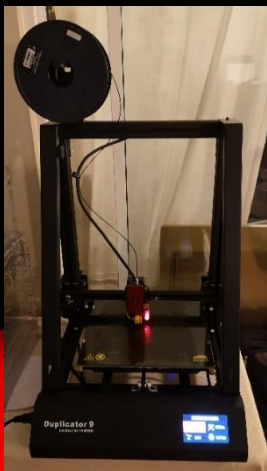
www.3dsds.co.uk

enquiries@3dsds.co.uk

Mobile: +44 (0) 780 101 0100

New Service Announcement

Due to our expansion, we can now offer an additional Service a 3D Print of your model created in Advance Steel, Revit, AutoCAD or just provide us with an STL File giving you the ability to show off your creation to potential Clients to win that contract.



STRUCTURAL & ARCHITECTURAL DETAILERS

You Design It, We Model, Detail and Deliver the Drawings
All in a days work
Location is not an issue in this digital age to get things done

We've been approved by
approvedbusiness.co.uk

UK
SBD

UK Small
Business
Directory

CYLEX

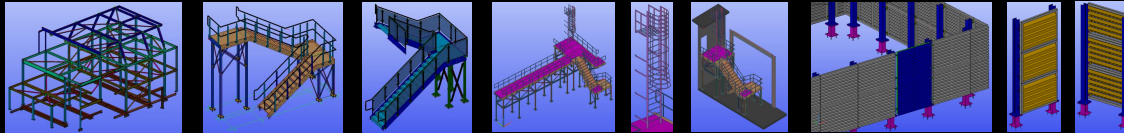
3D STRUCTURAL DETAILING SERVICES LIMITED

3DSDS



Everything we do for our Clients is bespoke, i.e. all elements are individually modelled to your requirements.

NOT POSTED MUCH LATELY “BEEN REALLY BUSY”



- **COMMERICAL BUILDING EXTENSION.**
- **MEZZANINE FLOOR STAIRCASES.**
- **FEATURE STAIRCASES WITH GLASS INFILL PANELS FOR A FAMOUS BUT CONFIDENTIAL SITE.**
- **GANTRIES WITH STAIRCASES & CAGE LADDERS FOR ANOTHER LANDMARK PROJECT.**
- **ROOF TOP AIR HANDLING UNIT ENCLOSURES WITH LOUVERS.**

**MORE DETAILS TO FOLLOW
“IF I GET TIME !!”**

For more information,
please email
enquiries@3dsds.co.uk
or give us a call on
+44 (0) 780 101 0100
Follow us on
LinkedIn and or Facebook



STRUCTURAL & ARCHITECTURAL DETAILERS

You Design It, We Model, Detail and Deliver the Drawings
All in a days work
Location is not an issue in this digital age to get things done



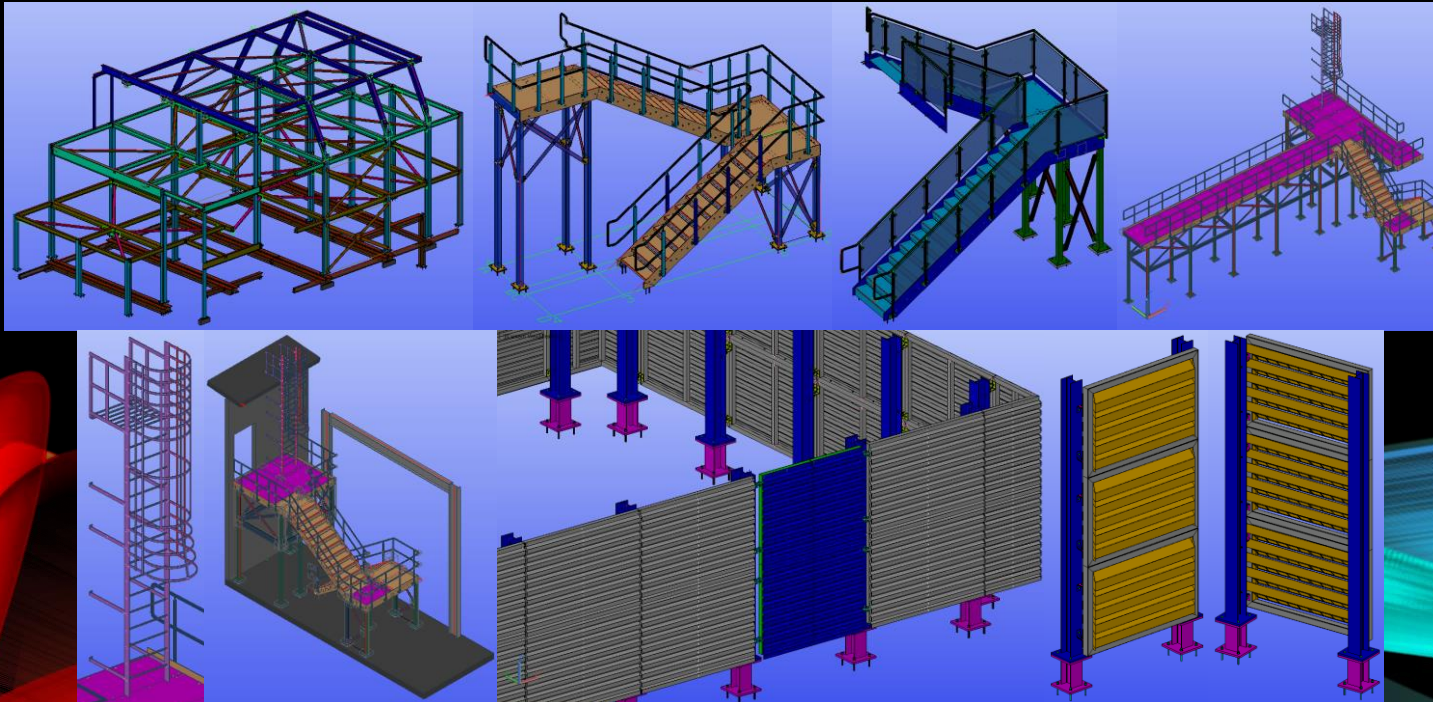
3D STRUCTURAL DETAILING SERVICES LIMITED

3DSDS



Everything we do for our Clients is bespoke, i.e. all elements are individually modelled to your requirements.

*It has been a very busy 2 months here at 3DSDS.
Below are some images that we have been working on for some
new and existing clients.*



For more information,
please email
enquiries@3dsds.co.uk
or give us a call on
+44 (0) 780 101 0100
Follow us on
LinkedIn and or Facebook

STRUCTURAL & ARCHITECTURAL DETAILERS

You Design It, We Model, Detail and Deliver the Drawings
All in a days work
Location is not an issue in this digital age to get things done



3D STRUCTURAL DETAILING SERVICES LIMITED

3DSDS



Everything we do for our Clients is bespoke, i.e. all elements are individually modelled to your requirements.

For more information,
please email
enquiries@3dsds.co.uk
or give us a call on
+44 (0) 780 101 0100
Follow us on
LinkedIn and or Facebook

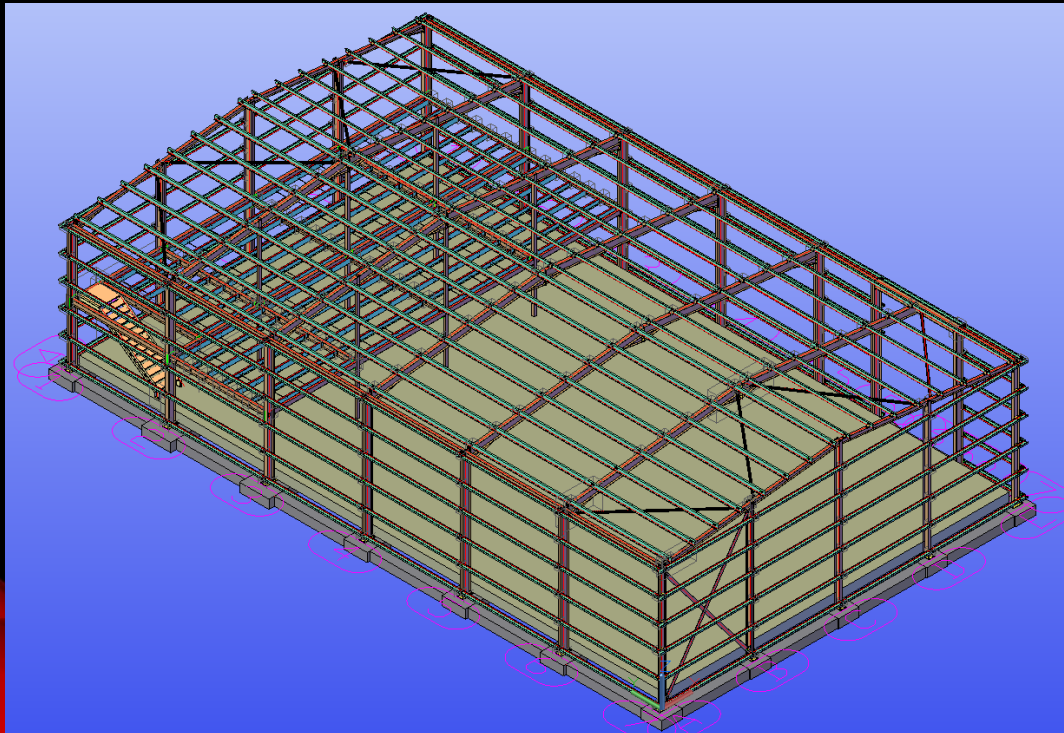
New Project Underway

Portal Frame Building modelled in Advance Steel.

Half day to model
this so far with all
connections only
needs railings on
stairs and platform.

A day to produce
and tidy up
fabrication
drawings.

Over to Client
beginning of next
week.



STRUCTURAL & ARCHITECTURAL DETAILERS

You Design It, We Model, Detail and Deliver the Drawings
All in a days work
Location is not an issue in this digital age to get things done

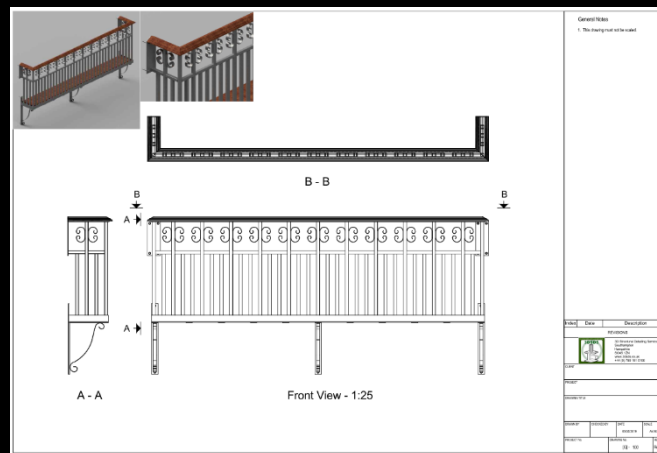


Everything we do for our Clients is bespoke, i.e. all elements are individually modelled to your requirements.

For more information,
please email
enquiries@3dsds.co.uk
or give us a call on
+44 (0) 780 101 0100
Follow us on
LinkedIn and or Facebook

Completed Project

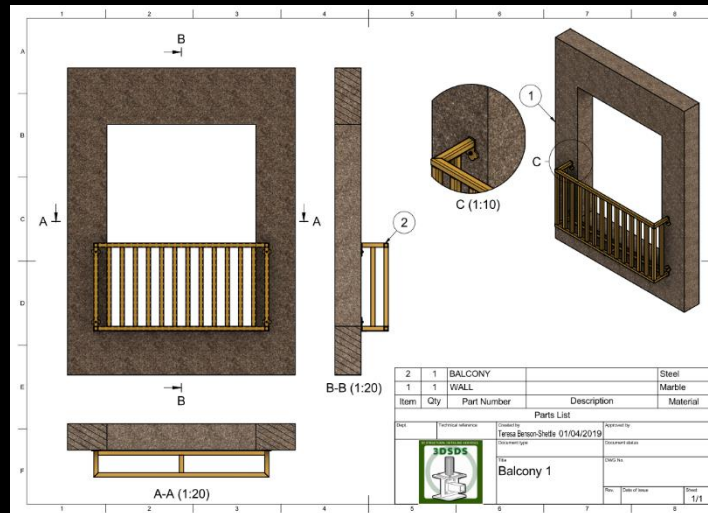
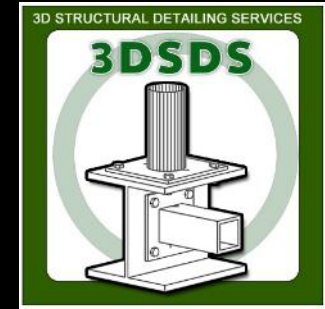
5 Juliet Balconies modelled in
Advance Steel & Rendered in Fusion 360.



MATERIAL LIST											
		Date: 05-20-2019									
		Project: 1000000									
Item	Qty	Material	Grade	Length	Width	Weight	Unit	Volume	Surface Area	Total Weight	Description
Structural Items											
101	1	PLATE	S275	100	10	1.2	kg	0.001	0.001	0.001	1.2
102	1	PLATE	S275	100	10	1.2	kg	0.001	0.001	0.001	1.2
103	1	PLATE	S275	100	10	1.2	kg	0.001	0.001	0.001	1.2
104	1	PLATE	S275	100	10	1.2	kg	0.001	0.001	0.001	1.2
105	1	PLATE	S275	100	10	1.2	kg	0.001	0.001	0.001	1.2
106	1	PLATE	S275	100	10	1.2	kg	0.001	0.001	0.001	1.2
107	1	PLATE	S275	100	10	1.2	kg	0.001	0.001	0.001	1.2
108	1	PLATE	S275	100	10	1.2	kg	0.001	0.001	0.001	1.2
109	1	PLATE	S275	100	10	1.2	kg	0.001	0.001	0.001	1.2
110	1	PLATE	S275	100	10	1.2	kg	0.001	0.001	0.001	1.2
111	1	PLATE	S275	100	10	1.2	kg	0.001	0.001	0.001	1.2
112	1	PLATE	S275	100	10	1.2	kg	0.001	0.001	0.001	1.2
113	1	PLATE	S275	100	10	1.2	kg	0.001	0.001	0.001	1.2
114	1	PLATE	S275	100	10	1.2	kg	0.001	0.001	0.001	1.2
115	1	PLATE	S275	100	10	1.2	kg	0.001	0.001	0.001	1.2
116	1	PLATE	S275	100	10	1.2	kg	0.001	0.001	0.001	1.2
117	1	PLATE	S275	100	10	1.2	kg	0.001	0.001	0.001	1.2
118	1	PLATE	S275	100	10	1.2	kg	0.001	0.001	0.001	1.2
119	1	PLATE	S275	100	10	1.2	kg	0.001	0.001	0.001	1.2
120	1	PLATE	S275	100	10	1.2	kg	0.001	0.001	0.001	1.2
121	1	PLATE	S275	100	10	1.2	kg	0.001	0.001	0.001	1.2
122	1	PLATE	S275	100	10	1.2	kg	0.001	0.001	0.001	1.2
123	1	PLATE	S275	100	10	1.2	kg	0.001	0.001	0.001	1.2
124	1	PLATE	S275	100	10	1.2	kg	0.001	0.001	0.001	1.2
125	1	PLATE	S275	100	10	1.2	kg	0.001	0.001	0.001	1.2
126	1	PLATE	S275	100	10	1.2	kg	0.001	0.001	0.001	1.2
127	1	PLATE	S275	100	10	1.2	kg	0.001	0.001	0.001	1.2
128	1	PLATE	S275	100	10	1.2	kg	0.001	0.001	0.001	1.2
129	1	PLATE	S275	100	10	1.2	kg	0.001	0.001	0.001	1.2
130	1	PLATE	S275	100	10	1.2	kg	0.001	0.001	0.001	1.2
131	1	PLATE	S275	100	10	1.2	kg	0.001	0.001	0.001	1.2
132	1	PLATE	S275	100	10	1.2	kg	0.001	0.001	0.001	1.2
133	1	PLATE	S275	100	10	1.2	kg	0.001	0.001	0.001	1.2
134	1	PLATE	S275	100	10	1.2	kg	0.001	0.001	0.001	1.2
135	1	PLATE	S275	100	10	1.2	kg	0.001	0.001	0.001	1.2
136	1	PLATE	S275	100	10	1.2	kg	0.001	0.001	0.001	1.2
137	1	PLATE	S275	100	10	1.2	kg	0.001	0.001	0.001	1.2
138	1	PLATE	S275	100	10	1.2	kg	0.001	0.001	0.001	1.2
139	1	PLATE	S275	100	10	1.2	kg	0.001	0.001	0.001	1.2
140	1	PLATE	S275	100	10	1.2	kg	0.001	0.001	0.001	1.2
141	1	PLATE	S275	100	10	1.2	kg	0.001	0.001	0.001	1.2
142	1	PLATE	S275	100	10	1.2	kg	0.001	0.001	0.001	1.2
143	1	PLATE	S275	100	10	1.2	kg	0.001	0.001	0.001	1.2
144	1	PLATE	S275	100	10	1.2	kg	0.001	0.001	0.001	1.2
145	1	PLATE	S275	100	10	1.2	kg	0.001	0.001	0.001	1.2
146	1	PLATE	S275	100	10	1.2	kg	0.001	0.001	0.001	1.2
147	1	PLATE	S275	100	10	1.2	kg	0.001	0.001	0.001	1.2
148	1	PLATE	S275	100	10	1.2	kg	0.001	0.001	0.001	1.2
149	1	PLATE	S275	100	10	1.2	kg	0.001	0.001	0.001	1.2
150	1	PLATE	S275	100	10	1.2	kg	0.001	0.001	0.001	1.2
151	1	PLATE	S275	100	10	1.2	kg	0.001	0.001	0.001	1.2
152	1	PLATE	S275	100	10	1.2	kg	0.001	0.001	0.001	1.2
153	1	PLATE	S275	100	10	1.2	kg	0.001	0.001	0.001	1.2
154	1	PLATE	S275	100	10	1.2	kg	0.001	0.001	0.001	1.2
155	1	PLATE	S275	100	10	1.2	kg	0.001	0.001	0.001	1.2
156	1	PLATE	S275	100	10	1.2	kg	0.001	0.001	0.001	1.2
157	1	PLATE	S275	100	10	1.2	kg	0.001	0.001	0.001	1.2
158	1	PLATE	S275	100	10	1.2	kg	0.001	0.001	0.001	1.2
159	1	PLATE	S275	100	10	1.2	kg	0.001	0.001	0.001	1.2
160	1	PLATE	S275	100	10	1.2	kg	0.001	0.001	0.001	1.2
161	1	PLATE	S275	100	10	1.2	kg	0.001	0.001	0.001	1.2
162	1	PLATE	S275	100	10	1.2	kg	0.001	0.001	0.001	1.2
163	1	PLATE	S275	100	10	1.2	kg	0.001	0.001	0.001	1.2
164	1	PLATE	S275	100	10	1.2	kg	0.001	0.001	0.001	1.2
165	1	PLATE	S275	100	10	1.2	kg	0.001	0.001	0.001	1.2
166	1	PLATE	S275	100	10	1.2	kg	0.001	0.001	0.001	1.2
167	1	PLATE	S275	100	10	1.2	kg	0.001	0.001	0.001	1.2
168	1	PLATE	S275	100	10	1.2	kg	0.001	0.001	0.001	1.2
169	1	PLATE	S275	100	10	1.2	kg	0.001	0.001	0.001	1.2
170	1	PLATE	S275	100	10	1.2	kg	0.001	0.001	0.001	1.2
171	1	PLATE	S275	100	10	1.2	kg	0.001	0.001	0.001	1.2
172	1	PLATE	S275	100	10	1.2	kg	0.001	0.001	0.001	1.2
173	1	PLATE	S275	100	10	1.2	kg	0.001	0.001	0.001	1.2
174	1	PLATE	S275	100	10	1.2	kg	0.001	0.001	0.001	1.2
175	1	PLATE	S275	100	10	1.2	kg	0.001	0.001	0.001	1.2
176	1	PLATE	S275	100	10	1.2	kg	0.001	0.001	0.001	1.2
177	1	PLATE	S275	100	10	1.2	kg	0.001	0.001	0.001	1.2
178	1	PLATE	S275	100	10	1.2	kg	0.001	0.001	0.001	1.2
179	1	PLATE	S275	100	10	1.2	kg	0.001	0.001	0.001	1.2
180	1	PLATE	S275	100	10	1.2	kg	0.001	0.001	0.001	1.2
181	1	PLATE	S275	100	10	1.2	kg	0.001	0.001	0.001	1.2
182	1	PLATE	S275	100	10	1.2	kg	0.001	0.001	0.001	1.2
183	1	PLATE	S275	100	10	1.2	kg	0.001	0.001	0.001	1.2
184	1	PLATE	S275	100	10	1.2	kg	0.001	0.001	0.001	1.2
185	1	PLATE	S275	100	10	1.2	kg	0.001	0.001	0.001	1.2
186	1	PLATE	S275	100	10	1.2	kg	0.001	0.001	0.001	1.2
187	1	PLATE	S275	100	10	1.2	kg	0.001	0.001	0.001	1.2
188	1	PLATE	S275	100	10	1.2	kg	0.001	0.001	0.001	1.2
189	1	PLATE	S275	100	10	1.2	kg	0.001	0.001	0.001	1.2
190	1	PLATE	S275	100	10	1.2	kg	0.001	0.001	0.001	1.2
191	1	PLATE	S275	100	10	1.2	kg	0.001	0.001	0.001	1.2
192	1	PLATE	S275	100	10	1.2	kg	0.001	0.001	0.001	1.2
193	1	PLATE	S275	100	10	1.2	kg	0.001	0.001	0.001	1.2
194	1	PLATE	S275	100	10	1.2	kg	0.001	0.001	0.001	1.2
195	1	PLATE	S275	100	10	1.2	kg	0.001	0.001	0.001	1.2
196	1	PLATE	S275	100	10	1.2	kg	0.001	0.001	0.001	1.2
197	1	PLATE	S275	100	10	1.2	kg	0.001	0.001	0.001	1.2
198	1	PLATE	S275	100	10	1.2	kg	0.001	0.001	0.001	1.2
199	1	PLATE	S275	100	10	1.2	kg	0.001	0.001	0.001	1.2
200	1	PLATE	S275	100	10	1.2	kg	0.001	0.001	0.001	1.2
201	1	PLATE	S275	100	10	1.2	kg	0.001	0.001	0.001	1.2
202	1	PLATE	S275	100	10	1.2	kg	0.001	0.001	0.001	1.2
203	1	PLATE	S275	100	10	1.2	kg	0.001	0.001	0.001	1.2
204	1	PLATE	S275	100	10	1.2	kg	0.001	0.001	0.001	1.2
205	1	PLATE	S275	100	10	1.2	kg	0.001	0.001	0.001	1.2
206	1	PLATE	S275	100	10	1.2	kg	0.001	0.001	0.001	1.2
207	1	PLATE	S275	100	10	1.2	kg	0.001	0.001	0.001	1.2
208	1	PLATE	S275	100	10	1.2	kg	0.001	0.001	0.001	1.2
209	1	PLATE	S275	100	10	1.2	kg	0.001	0.001	0.001	1.2
210	1	PLATE	S275	100	10	1.2	kg	0.001	0.001	0.001	1.2
211	1	PLATE	S275	100	10	1.2	kg	0.001	0.001	0.001	1.2
212	1	PLATE	S275	100	10	1.2	kg	0.001	0.001	0.001	1.2
213	1	PLATE	S275	100	10	1.2	kg	0.001	0.001	0.001	1.2
214	1	PLATE	S275	100	10	1.2	kg	0.001	0.001	0.001	1.2
215	1	PLATE	S275	100	10	1.2	kg	0.001	0.001	0.001	1.2
216	1	PLATE	S275	100	10	1.2	kg	0.001	0.001	0.001	1.2
217	1	PLATE	S275	100	10	1.2	kg	0.001	0.001	0.001	1.2
218	1	PLATE	S275	100	10	1.2	kg	0.001	0.001	0.001	1.2
219	1	PLATE	S275	100	10	1.2	kg	0.001	0.001	0.001	1.2
220	1	PLATE	S275	100	10	1.2	kg	0.001	0.001	0.001	1.2
221	1	PLATE	S275	100	10	1.2	kg	0.001	0.001	0.001	1.2
222	1	PLATE	S275	100	10	1.2	kg	0.001	0.001	0.001	1.2

Latest Project

26 Juliet Balconies to be modelled in
Advance Steel & Rendered in Fusion 360.

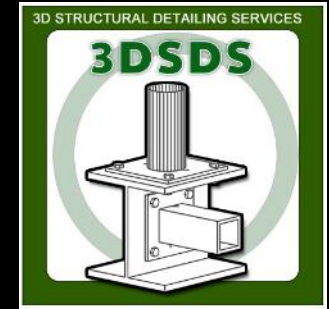


BOLT LIST							
Date: 01-Apr-2019 Project: Author:							
Size	Length (mm)	Grade	Coating	Quantity	Type	Weight each (kg)	Total Weight (kg)
M10 x 150 HILTI HIT-HY 200-A HIT-V 8.8 -	150	8.8	Bright Zinc	4	HILTI HIT-HY	0.3	1.3
				4			1.3
				4			1.3

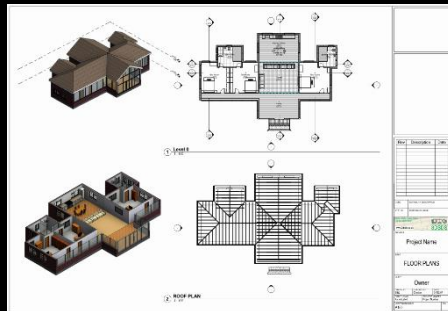
MATERIAL LIST									
Date: 01-Apr-2019 Project: Author:									
Mark	Size	Quantity	Grade	Length (mm)	Width (mm)	Weight each (kg)	Total Weight (kg)	Surface Area (m ² /part)	Total Surface (m ²)
Straight Beams									
B1	SHS50X6.3	2	S275JR	2,000		16.6	33.3	0.400	0.800
F1000	FL100X10	2	S275JR	155		0.9	1.8	0.027	0.053
F1001	FL100X10	2	S275JR	150		0.9	1.7	0.026	0.052
M1000	SHS50X6.3	16	S275JR	900		7.5	119.8	0.180	2.880
M1001	SHS50X6.3	4	S275JR	300		2.5	10.0	0.060	0.240
M1003	FL50X5	1	S275JR	2,000		3.9	3.9	0.220	0.220
M1004	FL50X5	1	S275JR	250		0.5	0.5	0.028	0.028
		28					171.0		4.273
		28						171.0	4.273

Software used – ADVANCE STEEL & FUSION 360

Latest Project



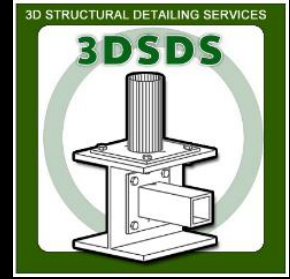
A New 3 bed bungalow.
Will be constructed on 4 acres of Land.
Traditional build construction.



Software used - REVIT

New Projects Acquired

***Need something similar or something totally different,
email enquiries@3dsds.co.uk to discuss your requirements.***



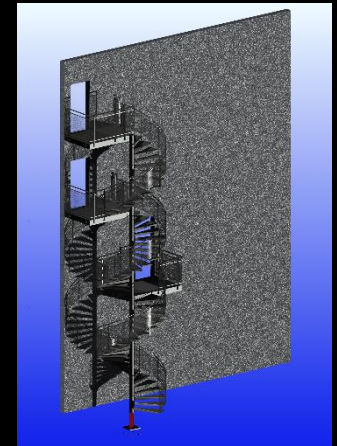
5 Stepover Staircases.



2 Fire Escape Staircases.



1 Spiral Staircase.



Software used – Autodesk Advance Steel