

Insulation



**Aeroground**<sup>™</sup>

INSULATED FOUNDATION SYSTEM

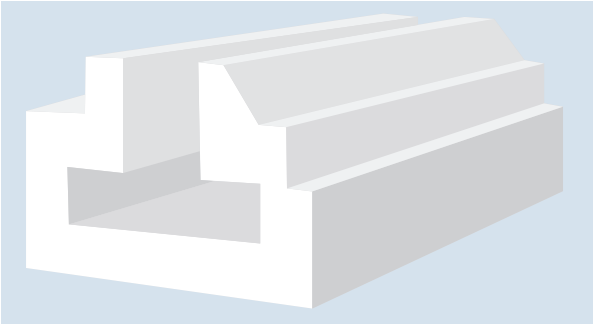
- Practically eliminates thermal bridge to ground
- U-values to 0.1W/m<sup>2</sup>·K
- Manufactured in Ireland
- Compatible with under-floor heating & Radon protection systems
- Proven performance



*Low Energy –  
Low Carbon Buildings*

# Product Details

Drawing on over 50 years experience of providing homeowners in Ireland with innovative EPS insulation solutions, both *Kingspan Aerobord*® and Springvale are, once again providing industry leading energy conservation systems. Insulated raft foundations are gaining in popularity in Ireland, they are particularly suited to low energy or passive house standard projects.

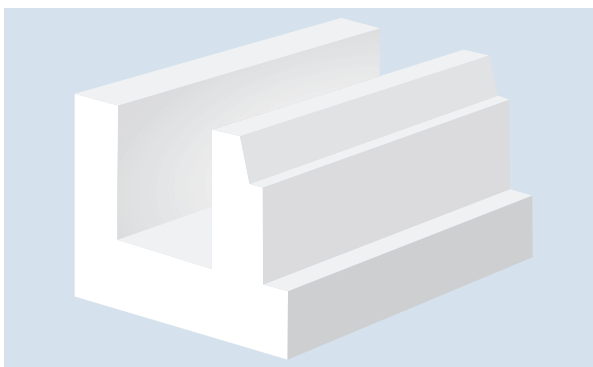


Our designs regularly deliver U-values as low as 0.1W/m<sup>2</sup>·K. Insulated Raft foundations are suitable for use with Timber or Steel Frame, Insulated Concrete Form or Block construction methods. Building, literally on three unique properties of EPS; high compressive strength combined with extremely low water absorption and excellent insulating values, the load bearing walls and floor slab of your building sit on top of the insulating layer practically eliminating heat loss to the ground.

*Kingspan AeroGround*™ is manufactured in Ireland. Insulated raft foundations are generally installed by an experienced contractor. However, training programs can be organised for new contractors. Please contact us for further information.

**The *Kingspan AeroGround*™ system includes the following components:**

1. Ring Beam Shuttering profile (Bespoke designs for each individual projects)
2. Ring Beam to Slab ties (U-Sinus ties)
3. Ring Beam joiners (Steel Combs)
4. Release membrane
5. Support chairs for Ring Beam & steel mesh
6. Insulation fixing nails
7. 100mm layers of *Kingspan AeroGround*™ floor insulation.



# Installation



1. Strip site and lay compacted hardcore compacted in layers (18-35 mm grade 505). Incorporate Radon sump and pipework.



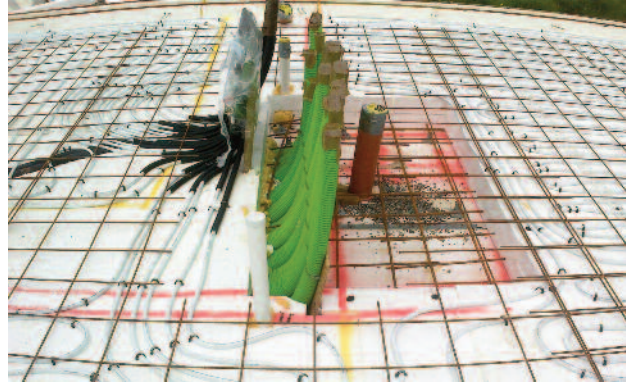
2. Place gas membrane / dpm. Seal all joints ends to one meter all around building and slope away from the structure. Lay 3-8 mm stone blinding up to 50 mm deep. Set out corners.



3. Continue placement of ring beam profiles. Trim profiles as necessary to achieve a tight fit. Join profiles with galvanised steel combs.



4. Place first 2 layers of floor insulation sheets over the remaining foundation. Overlap sheets to achieve continuity of insulation. Fit *Kingspan AeroGround™* internal load bearing insulation according to floor plan.



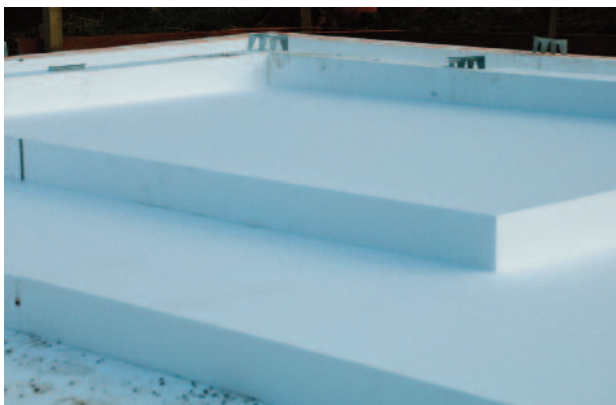
7. Install reinforcing steel mesh according to design. The underfloor heating system can be installed at this stage.



5. Install U-Sinus ties through the ring beam profiles and place steel reinforcing according to supplied design.



8. Insulated foundation system is now completed and ready to take ring beam and concrete slab.



6. Install final layer of *Kingspan AeroGround™* floor insulation. Secure with insulation fixing nails.



# Contact Details

## Customer Service

For quotations, order placement, details of despatches and general enquiries.

Kingspan Aerobord Tel: +353 (0) 42 979 5000  
Kingspan Springvale Tel: +44 (0) 2893 340203  
email: [info@kingspaninsulation.ie](mailto:info@kingspaninsulation.ie)

## Technical Advice / Design

Kingspan Insulation supports all of its products with a comprehensive Technical Advisory Service for specifiers, stockists and contractors.

Tel: +353 (0) 42 975 4297  
Fax: +353 (0) 42 975 4296  
email: [technical@kingspaninsulation.ie](mailto:technical@kingspaninsulation.ie)



**Aerobord Limited**  
Askeaton, County Limerick,  
Ireland, V94 EK16  
[www.kingspanaerobord.ie](http://www.kingspanaerobord.ie)

**Springvale Insulation Limited**  
75 Springvale Road, Ballyclare, County  
Antrim, BT39 OSS  
[www.kingspanspringvale.co.uk](http://www.kingspanspringvale.co.uk)

© Kingspan, Aerobord and the Lion Device are Registered Trademarks of the Kingspan Group plc in the UK, Ireland and other countries. All rights reserved.  
™ Aeroground is a Trademark of the Kingspan Group plc.

Springvale Insulation Limited is registered in England & Wales, No. 01872933. Registered Office: Greenfield Business Park, No.2 Greenfield, Holywell, Flintshire, CH8 7HU, UK. VAT GB108351143.  
Aerobord Limited is registered in Ireland, No. 491618. Registered Office: Askeaton, Limerick, Co. Limerick, V94 EK16. VAT IE9777756W.