

SYMMETRY™ OPTIONAL MODULES v7.0

The Symmetry Security Management System software provides a comprehensive range of fully-integrated additional software modules.

This document summarizes the major optional modules. For further information, please refer to the individual data sheets.

KEY BENEFITS

- Greater levels of efficiency, flexibility and effectiveness
- Automates and improves site security
- Enables all security management equipment to be controlled from a single user interface
- Reduces training costs

VIDEO MANAGEMENT

- Provides integration with Network cameras, video encoders and market leading DVR and NVRs
- No separate module required (v7.0 or later) as video is included in platform software
- Provides complete control of cameras
- Enables alarms to generate index points on recordings for easy replay of alarm incidents
- Video Identity Verification feature enables comparison of live and stored card-holder images
- Automatic camera triggering with scheduled and trigger commands
- Provides distributed storage for network cameras and encoders

THREAT LEVEL MANAGER™

- Enables the level of security to be easily changed to match the level of threat
- Supports five fully-customizable threat levels
- Selective access control, depending on the threat level
- Compatible with Government threat-level security policies

WORKFLOW DESIGNER

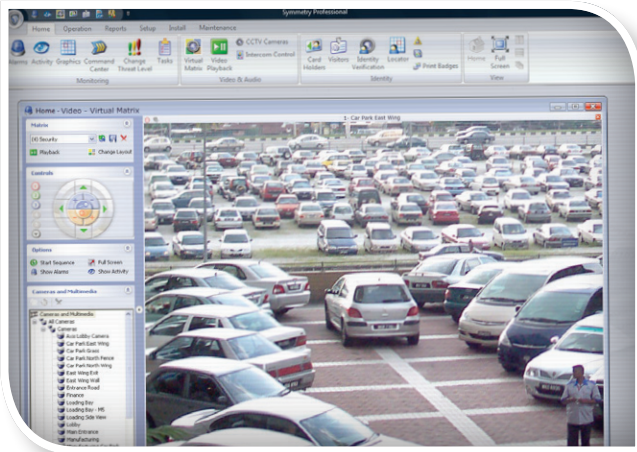
- Fully customize the alarm acknowledgement process
- Unlimited number of workflows per Symmetry system
- Create simple question and answer guides with actions based on responses
- Automate sending of commands
- Alarm priority updates

INTRUSION MANAGEMENT

- Provides integration with DMP, HISEC®, Honeywell Galaxy® and DSC® intrusion alarm panels
 - M2150 Controller provides complete intrusion management for SCIF applications (*USA market only*)
 - Alarms detected by the panels are displayed in the Symmetry Security Management System Software
 - Enables complete alarms monitoring from a common user interface
 - Two-way communication allows Symmetry to control alarm panels
 - Trigger commands give automatic control of external equipment when an alarm occurs
- * Europe, Middle East & Africa only*

DATA CONNECT (IMPORT/EXPORT)

- Enables identity data to be imported/exported from/to third-party databases (e.g. human resources or ERP)
- Allows import/export from/to text or SQL database
- Encryption prevents unauthorized imports
- Selectable card data for export
- Automatically add access rights during import
- Also provides a simple method to receive alarm and event transactions from third party systems
- Real time or batch import



GUARD PATROL MANAGEMENT

- Enables each guard's patrol tour to be monitored, recorded and reviewed
- Confirms that guards are patrolling correctly
- Determines the sequence of tour points and the time allowed for the guard to travel between them
- Indicates deviations from tour rules
- Standard access-control readers or monitor points can be used as tour points

WEB ACCESS

- Fully-integrated Web browser solution
- Provides an easy yet secure method for a user to monitor, control and administer a system from almost any location in the world
- 128-bit Secure Socket Layer (SSL) encryption available
- Enables tasks such as card administration or report generation to be carried out remotely over the Internet or Intranet
- Web Clients require no client installation CD or software protection key
- Security maintained by user login

INTERCOM MANAGEMENT

- Provides an easy-to-use graphical interface for managing and answering calls
- Dedicated Intercom Control screen displays all calls
- Fully integrated with Access Control and Video Management
- A Command button allows a barrier or door associated with the selected intercom to be opened

SAFETY ROLL CALL (MUSTER)

- Produces a report of people, including visitors, who may be in the building and where they are
- Allows multiple muster areas with individual operation
- Invaluable during fire or other emergencies
- New reports are continually generated until no-one is left in the building
- Card readers can be used at muster stations to identify employees
- The muster can start automatically when a monitor point is triggered

XML OPEN INTEGRATION

- Allows systems to exchange data with the Symmetry Security Management System using industry-standard XML and Web Services technologies
- Simplifies the task of linking diverse systems with Symmetry
- Alarms from other systems can be exported to Symmetry for centralized alarm management
- Enables an external system to send commands to Symmetry to control card readers, etc.
- Allows card holder information to be imported and exported

BUILDING CONTROL MANAGER

- Provides automatic control of third-party building systems, such as lighting equipment or heating, ventilation and air conditioning (HVAC) units
- Leads to potential energy savings
- Allows control of third-party building systems from Symmetry user interface
- Uses the industry-standard BACnet™ communications protocol

ACTIVE DIRECTORY SINGLE SIGN-ON

- Allows authentication with Microsoft Active Directory. Symmetry used to bypass the normal login and password screen.

PURCHASING INFORMATION

- BUILDING-CONTROL-V7
- DATA-CONNECT-V7
- DIRECTORY-AUTH-V7
- GUARD-TOUR-V7
- INTERCOM-KIT-V7
- INTRUSION-PNL-01-V7
- INTRUSION-RCV-01-V7
- MUSTER-KIT-V7
- THREAT-LEVEL-V7
- VID-CAM-xxx-V7 Camera Licenses (xxx=004, 008, 016, 032, 064, 128)
- WEBACCESS/x-V7 (x = licenses 5, 10, 25, 50, 100)
- WORKFLOW-V7
- XML-COM-DEV-KIT-V7.x
- XML-C&C-DEV-KIT-V7.x
- XML-DEV-KIT-V7.x



G4S Fire & Security Systems (UK)

www.g4sfireandsecurity.co.uk