

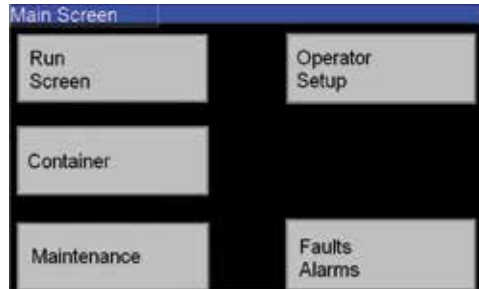
BH2000 Series Registration Controls Upgrade



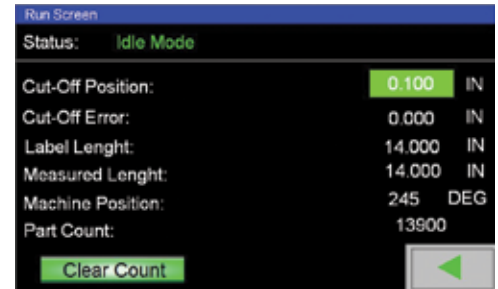
**Motion
Controller**

HMI Interface

Main Screen



Run Screen



The BH2000 Registration Controls Upgrade (RCU) is an aftermarket offering from B & H designed to extend the useful life of any BH2000 labeler with a Ormec Gen III registration control system. The BH2000 RCU is based on the latest ServoWire Motion & Logic Controller (SMC) from Ormec. The upgrade package has been designed, configured and programmed to reduce the operating costs and improve the performance of BH2000 labelers currently equipped with Gen III systems.

BH2000 RCU DESCRIPTION

The BH2000 RCU is comprised of six new components that are swap-out replacements for current Gen III components. The upgrade includes a new controller, a new servo drive, a new servo motor, a new I/O rack, a new color HMI touchscreen and new cables and plugs. The upgrade offers lower total cost of ownership and higher productivity versus Gen III systems.

DURABLE AND DEPENDABLE

B & H takes great pride in the durability of our labelers. Installing the BH2000 RCU is an easy way to extend the useful life and increase the operating efficiency of your BH2000 labeler. The upgrade is built around more robust, all-digital components. It functions with fewer component failures which means more uptime and fewer maintenance problems. Bottom line, the BH2000 RCU is one of the best investments you can make in your BH2000 labeler.

FAST INSTALLATION

The BH2000 RCU has been designed to enable fast conversions. Removal of existing GEN III components and installation of the new RCU components can be completed by B & H Field Service Engineers in four to six hours. Once the new RCU components are in place, our field service engineers will test and demonstrate the new system and then train your personnel on how to use it. Since all GEN III terminology is used in the BH2000 RCU training is quickly accomplished.



Actual BH2000 main control cabinet with new registration controls upgrade installed.

CONTACT US

For more information or to order your BH2000 RCU, contact your dedicated B & H parts coordinator at 209-556-6160 or by e-mail at parts@bhlabeling.com.

BH2000 SERIES REGISTRATION CONTROLS UPGRADE HIGHLIGHTS

- Aftermarket registration controls upgrade for BH2000 series labelers
- Faster, higher precision, and more robust all-digital components versus GEN III
- Substantially lower price than Gen III systems replacement components
- Eighteen month warranty
- Installation can be completed in four to six hours
- HMI touchscreen offers expanded troubleshooting capabilities
- No new terminology to learn - Gen III terms carried forward in new system
- Fewer component failures
- Lower maintenance costs
- More uptime and higher productivity
- Fast payback, particularly versus older Gen III systems

CONTACT US

parts@bhlabeling.com
+1.209.556.6160

B & H LABELING SYSTEMS

3461 Roeding Road
Ceres, CA 95307
USA
www.bhlabeling.com



INNOVATION FOR THE LONG RUN®