



**Dover - 420 x 420 x 100/150 E600
HA104**

DOVER 420 X 420 X 100/150 E600

FEATURES:

- Traffic Flow Hinged
- Unique Spring Lock design
- BS EN124 Class E600
- Ductile Iron for Strength and Durability
- Black coated finish
- HA104 COMPLIANT

| | | |
|-------------|-------------------------------|---------------------|
| E600 | BS EN124: 1994 | ISO 9001 |
|-------------|-------------------------------|---------------------|



| Code | Product Name | Clear Opening (mm) | Over Base (mm) | Depth (mm) |
|-------------|--------------|--------------------|----------------|------------|
| CGD23TF/150 | DOVER | 420 x 420 | 600 x 530 | 150 |

EN124 Gully Gratings and Frames: E600, Group 5

E600 gully gratings and frames are designed for use in the kerb side of carriageways. All E600 gully gratings and frames are certified to the requirements of BS EN124. These gratings are HA104 approved



R&B UK JT LIMITED
COURT 2000, BRIDGNORTH ROAD,
MADELEY, TELFORD
SHROPSHIRE, TF7 4JB

SWITCHBOARD: +44 (0) 1952 580554
FACSIMILE: +44 (0) 1952 580527
WEBSITE: WWW.RANDB-UK.COM
EMAIL: SALES@RANDB-UK.COM



Montgomery - 600 x 600 x 150 E600

FEATURES:

- Non-rocking 3-point suspension design
- BS EN124 Class E600
- BS 7903 (1997) Compliant
- Ductile Iron for Strength and Durability
- Black coated finish

E600

BS EN124: 1994

ISO 9001



OPTIONS:

- Badged SW or FW
- Locking screws
- Sealing plate
- Ventilated
- Safety Grids

| Code | Product Name | Clear Opening (mm) | Over Base (mm) | Depth (mm) |
|-----------|--------------|--------------------|----------------|------------|
| 1060D/150 | Montgomery | 600 x 600 | 800 x 800 | 150 |

EN124 Access Covers and Frames: E600, Group 5

E600 access covers and frames are designed for use in areas of exceptionally high wheel loads. Such as docks, aircraft pavements, transport yards, loading bays etc. All E600 manhole covers and frames are certified to the requirements of BS EN124



Montgomery - 600 x 600 x 150 E600



Harlech – 675 x 675 x 150 E600

FEATURES:

Non-rocking 3-point suspension design

BS EN124 Class E600

BS 7903 (1997) Compliant

Ductile Iron for Strength and Durability

Black coated finish

E600

BS EN124: 1994

ISO 9001



OPTIONS:

Badged SW or FW

Locking screws

Sealing plate

Ventilated

Safety Grids

| Code | Product Name | Clear Opening (mm) | Over Base (mm) | Depth (mm) |
|-------|--------------|--------------------|----------------|------------|
| 1062E | Harlech | 675 x 675 | 825 x 825 | 150 |

EN124 Access Covers and Frames: E600, Group 5

E600 access covers and frames are designed for use in areas of exceptionally high wheel loads. Such as docks, aircraft pavements, transport yards, loading bays etc. All E600 manhole covers and frames are certified to the requirements of BS EN124



Harlech – 675 x 675 x 150 E600

R&B UK JT LIMITED
COURT 2000, BRIDGNORTH ROAD,
MADELEY, TELFORD
SHROPSHIRE, TF7 4JB

SWITCHBOARD: +44 (0) 1952 580554
FACSIMILE: +44 (0) 1952 580527
WEBSITE: WWW.RANDB-UK.COM
EMAIL: SALES@RANDB-UK.COM



Pembroke – 1220 x 675 x 150 E600

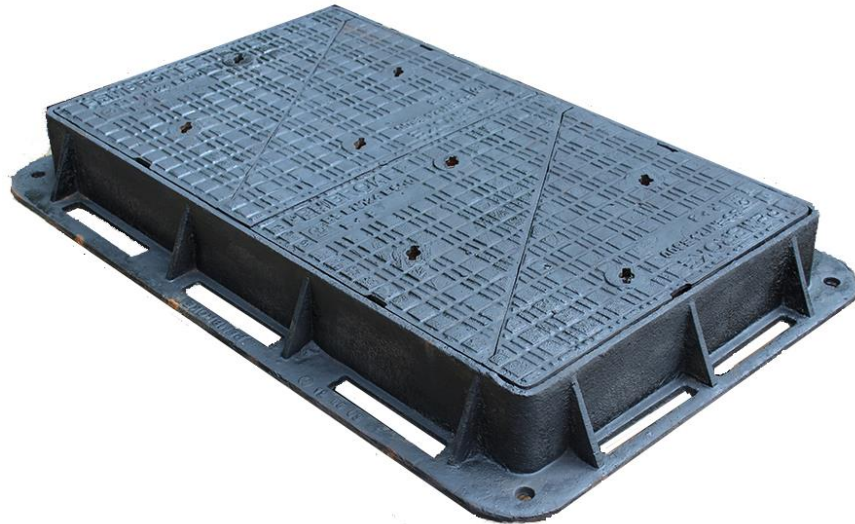
FEATURES:

- Non-rocking 3-point suspension design
- BS EN124 Class E600
- BS 7903 (1997) Compliant
- Ductile Iron for Strength and Durability
- Black coated finish

E600

BS EN124: 1994

ISO 9001



OPTIONS:

- Badged SW or FW
- Locking screws
- Sealing plate
- Ventilated
- Safety Grids

| Code | Product Name | Clear Opening (mm) | Over Base (mm) | Depth (mm) |
|-------|--------------|--------------------|----------------|------------|
| 1061D | Pembroke | 1220 x 675 | 1385 x 885 | 150 |

EN124 Access Covers and Frames: E600, Group 5

E600 access covers and frames are designed for use in areas of exceptionally high wheel loads. Such as docks, aircraft pavements, transport yards, loading bays etc. All E600 manhole covers and frames are certified to the requirements of BS EN124



Pembroke – 1220 x 675 x 150 E600



Kington - 1800 x 675 x 150 E600

FEATURES:

Non-rocking 3-point suspension design

BS EN124 Class E600

BS 7903 (1997) Compliant

Ductile Iron for Strength and Durability

Black coated finish

E600

BS EN124: 1994

ISO 9001

OPTIONS:

Badged SW or FW

Locking screws

Sealing plate

Ventilated

Safety Grids



| Code | Product Name | Clear Opening (mm) | Over Base (mm) | Depth (mm) |
|-------|--------------|--------------------|----------------|------------|
| 1062D | Kington | 1800 x 675 | 2070 x 955 | 150 |

EN124 Access Covers and Frames: E600, Group 5

E600 access covers and frames are designed for use in areas of exceptionally high wheel loads. Such as docks, aircraft pavements, transport yards, loading bays etc. All E600 manhole covers and frames are certified to the requirements of BS EN124



R&B UK JT LIMITED
COURT 2000, BRIDGNORTH ROAD,
MADELEY, TELFORD
SHROPSHIRE, TF7 4JB

SWITCHBOARD: +44 (0) 1952 580554
FACSIMILE: +44 (0) 1952 580527
WEBSITE: WWW.RANDB-UK.COM
EMAIL: SALES@RANDB-UK.COM