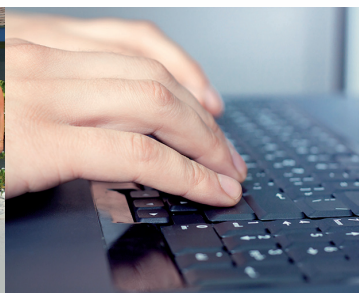


REALtime



FIRST EVER ALL-FEMALE FLIGHT INSPECTION CREW TAKES TO AIR!



In this issue:

- *First ever all-female flight inspection crew takes to air*
- *Global expansion*
- *RAID a winner for clients*
- *Is it a bird is it a plane?*
- *A new home for Radiola*

RADIOLA
AEROSPACE



Welcome to
REALtime



The 2014 year has been a tremendous year of development and expansion for Radiola Aerospace.

As an international company, we must continuously invest in the development of our staff, new technologies and operating capacity.

In this newsletter, we discuss new developments, which include the RAID database and UAS trials.

Strategies set in 2012/13 to expand our flight inspection business in selected markets have been realised in 2014. Contracts have been signed with many new customers in the Caribbean, Central/East Africa and South America.

To meet the demands of this increase in business, the company invested in a sixth flight inspection system in September.

Operations from our United Kingdom subsidiary, which recently moved into new premises at Gamston Airport, continue to grow.

I want to acknowledge the great support we have had this year from our customers, key suppliers and sub-contractors, with our United Kingdom based aircraft provider, Diamond Executive Aviation (DEA), worthy of special mention.

We wish our customers and suppliers the very best for 2015.

Brent Albiston
Managing Director

First ever all-female flight inspection crew takes to air



From Left, Evelyn Sissingh and First Officer Louise Courtney and Carole Thompson

The world's first ever all-female flight inspection crew recently returned from a short deployment to Morocco.

Headed up by Carole Thompson from our New Zealand office, it's believed this is the first time, anywhere in the world, that an all-female crew has undertaken a flight inspection mission.

The crew was made up of Captain Evelyn Sissingh and First Officer Louise Courtney – both of whom are from Radiola's prime aircraft provider, DEA, based in the United Kingdom – and Carole Thompson as Inspection Group Manager for Radiola.

Radiola's United Kingdom Manager,

Sam Weston, says the job was a mixed deployment of flight validation and flight inspection activities for the Office National Des Aéroports (ONDA) in Morocco during October.

Like most of our European, Middle East and African operations, this deployment came out of our United Kingdom operating base.

We'd like to congratulate Carole and the team for making history as the first all-female flight inspection crew.

For more on this story visit our website <http://www.radaero.com/en/about-us/media-releases/first-ever-all-female-flight-inspection-crew-takes-air>

GLOBAL EXPANSION

Radiola continues to go from strength to strength and is currently working in more than 70 countries around the world in places as far flung as Mozambique, Angola, Sierra Leone, Rwanda, Sudan, Morocco, Afghanistan, Iraq, Cayman Islands, Mauritius, Peru, Fiji, Cook Islands and most islands in the Caribbean including the British Virgin Islands, Aruba, Curacao and Bonaire.

Along with the increasing number of countries we provide support to, we have expanded our global infrastructure so we can operate more efficiently. In the past, our deployments originated from our New Zealand head office and involved a great

deal of travelling and moving of equipment. While most of the contracts and work requests still originate at headquarters, life has gotten a lot easier since we established our subsidiary company in the United Kingdom in 2010 (Radiola Aerospace Europe Ltd), and more recently our operating bases in Kenya (Nairobi), Lima (Peru) and Tortola in the British Virgin Islands.

We have long-term arrangements with these bases so we can manage our operations from there in aircraft that have been modified to our specifications. It makes it a lot easier for us to just put in our equipment and get on with the job.



RAID a winner for clients

Innovation helps keep us at the top of our game and our interactive database 'Radiola Aerodrome Interactive Database' (RAID) is no exception.

In the past, paper was king. Paper files for every job needed to be consulted to see when a last airport inspection had been done, what the results were and when further work was required.

That's all a thing of the past now with the cloud-based RAID application providing clients with all their flight inspection data.

Essentially, RAID is a map with airports from all

over the world plotted on it. Individual clients can look up their secure information and access reports, scheduling for next inspections and all the data relating to their airports.

Only approved users can access the information on particular airports. When entering the map program, if the marker on your airport is red that means it's time for inspection. If not, it isn't.

We believe this is a great benefit to customers who have access to information on their airport inspections at their fingertips.



New Address

**Level 1, Unit 2,
15 Marina View
Paremata 5026
New Zealand**

Is it a Bird? IS IT A PLANE?



Richard Thompson operating the UAS

NO, IT'S A UAS!

The stuff of science fiction is now a reality. We're currently testing our latest acquisition – our unmanned air system (UAS), which will help us test airfield lighting in the not too distant future.

Airport guidance lights need regular testing just like all other aspects of airport operations. Currently, if a client just wants the lighting tested, we do it the old fashioned way with a full flight crew in an aircraft.

We believe that a far more efficient, flexible and versatile way of operating is to use a UAS complete with sophisticated equipment on board to record lighting data, take video footage and help us to evaluate the lighting requirements.

Although it looks like a toy, the UAS is a sophisticated vehicle with a number of special features including autopilot, special navigation features, auto hover, high resolution camera, auto landing, long endurance and live video link to a smart phone application.

This is a far more effective way of operating in remote sites. Testing is currently being carried out with plans to trial the first inspections for clients in the New Year.

A NEW HOME FOR RADIOLA



Great outlook for Radlolas's new office

We've moved! We're still in Porirua and we're still doing what we do but we've moved to new premises in Marina View, Mana. The move took place at the end of October and we're enjoying our seaside location and taking the opportunity to have a few BBQs on the deck.

It's always been important to provide the team with a pleasant environment and the move achieves that – both indoors and out.

Indoors, the space has been customised for our needs including a bigger workshop, nice office areas with brilliant views and meeting spaces. Staff can get out at lunchtime and have their lunch on the beach or go for a walk.

We're still just a short commute to both Wellington and Paraparaumu airports and close to Porirua CBD.



New Zealand Office:

Radiola Aerospace Ltd
L1, Unit 2, 15 Marina View
Paremata 5026
PO Box 50243, Porirua 5240
New Zealand

T: +64 (0) 4 237 9230
F: +64 (0) 4 237 9231
E: sales@radaero.com

United Kingdom Office:

Radiola Aerospace Europe Ltd
Gamston Airport
Retford
Nottinghamshire DN22 0QL
United Kingdom

T: +44 (0) 1777 838 123
F: +44 (0) 1777 838 682
E: samw@radaero.com

If you haven't already visit our website!

www.radaero.com and sign-up for **REALtime**, it will keep you informed of all our latest news and developments.