

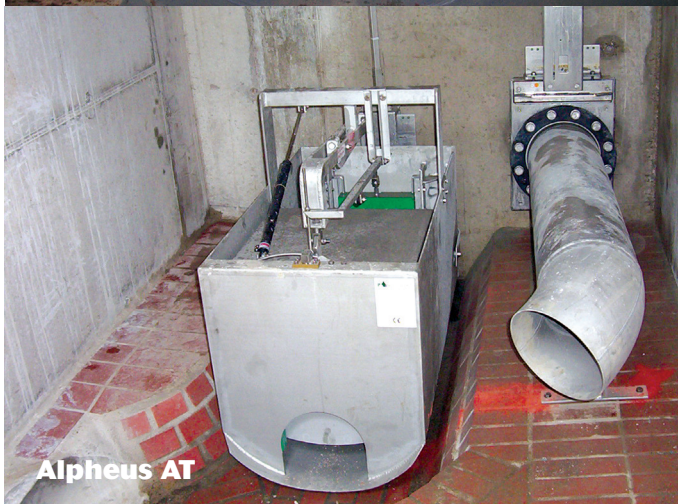
Alpheus Flow Regulators - Overview

Key Features & Benefits:

- Provides sewer flow control
- Maintains flow rate during head variation
- Minimises upstream storage – Cost saving
- Reduces 'drain down time' of attenuation systems

How We Create Value:

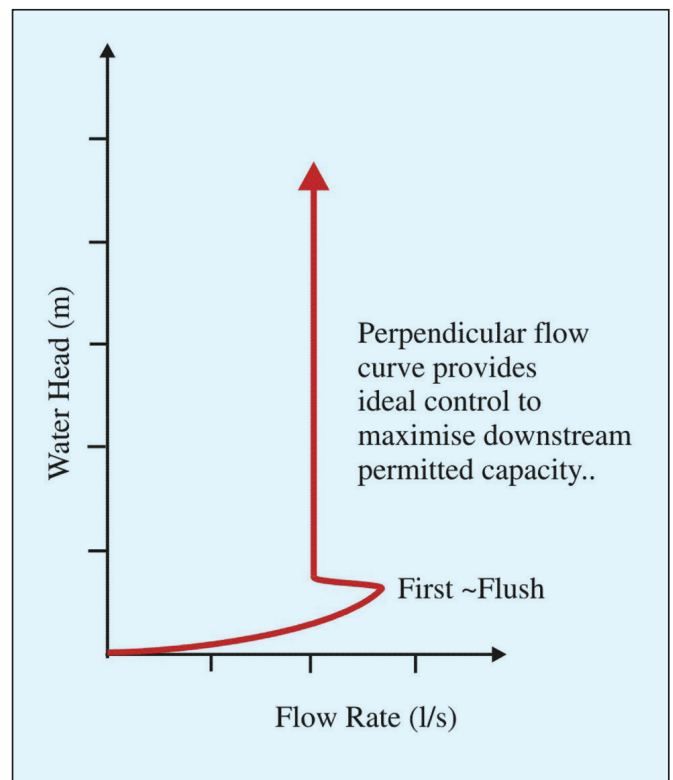
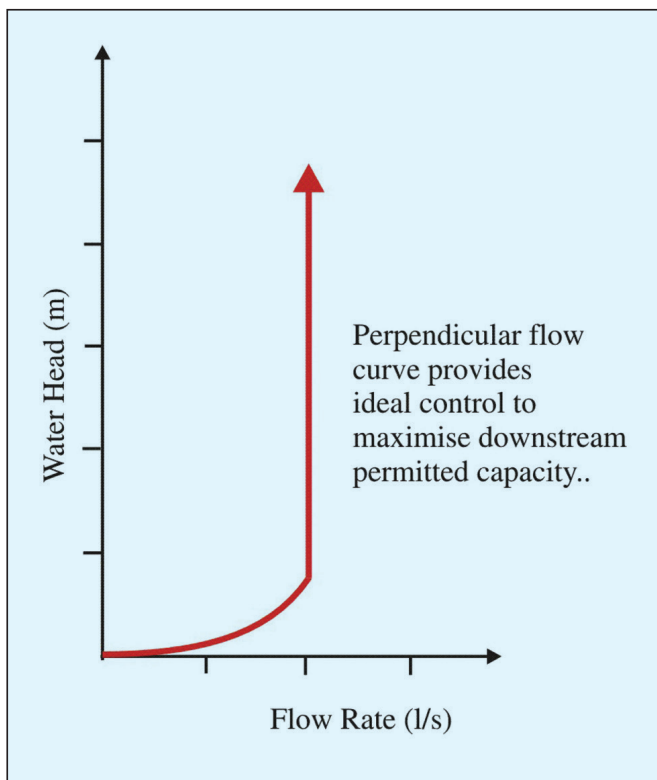
- Enables attenuation systems to be ready for next storm quickly
- Utilisation of upstream sewer volumes
- Reduces downstream flood risk
- River flow control
- Automatic blockage release function available



Alpheus Flow Regulators - Overview

Due to the extent of development, there is increasing pressure to regulate the flows within foul and surface water systems. Jacopa can provide a range of flow mechanical regulators that can accurately control the forward flow within the drainage system.

The Alpheus range of regulators has a proven track record in controlling flows from as little as 2 l/s to 2 400 l/s. The float activated mechanism is designed to maintain a constant discharge throughout the required head range. This maximises the downstream capacity, and minimises the upstream retention requirements.



Operating Principles

The Alpheus control is a 'variable orifice' regulator, which means that as the height of the impounded water rises, the aperture of the unit is reduced to maintain a constant flow rate.

During dry weather flow the aperture of the unit is fully open; as the water level rises, an internal float relates this change to a control arm, which opens or closes the orifice shutter to maintain the required flow rate.

For units that are required in foul sewer systems, the control unit can be designed to provide a first flush function. This means that the orifice is kept open for an extended period to allow the first flush debris to pass through the unit before the regulation begins. This is particularly useful where sewers with poor gradients have encouraged deposition during dry periods.

Alpheus variants are available for foul and surface water systems, for mounting on the inlet or outlet pipework.