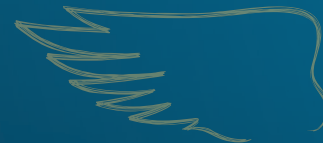




DK EXTREMUS

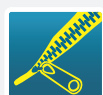
Registration Year: Extremus was registered in 2018
THE OUTSTANDING NEWCOMER



VIGOROUS ESTABLISHMENT



DOUBLE PHOMA RESISTANCE



POD SHATTER RESISTANCE

PRODUCT CHARACTERISTICS

EARLINESS AT REGROWTH	EARLY
EARLINESS AT FLOWERING	1 2 3 4 5 6 7 8 9
EARLINESS AT MATURITY	1 2 3 4 5 6 7 8 9
PLANT HEIGHT	1 2 3 4 5 6 7 8 9
LODGING RESISTANCE	1 2 3 4 5 6 7 8 9
STEM STIFFNESS	1 2 3 4 5 6 7 8 9
POD SHATTERING RESISTANCE	YES
PHOMA RESISTANCE	1 2 3 4 5 6 7 8 9
LIGHT LEAF SPOT RESISTANCE	1 2 3 4 5 6 7 8 9

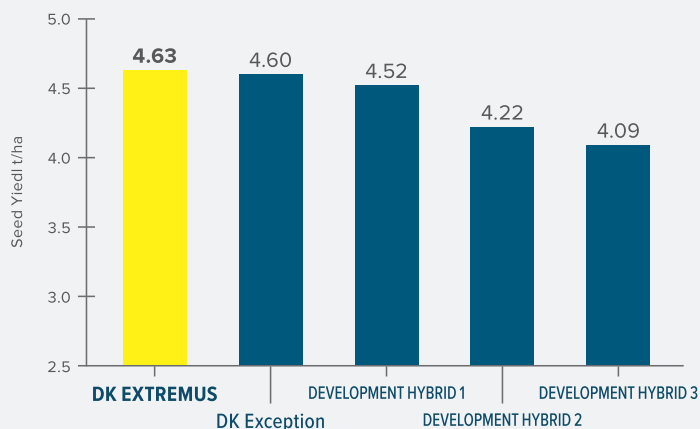
DEKALB Private Data (UK and FR) - not directly comparable with other sources

VARIETY BENEFITS

- 1 Double phoma resistance
- 2 Early spring regrowth and development
- 3 Stiff Stemmed at harvest

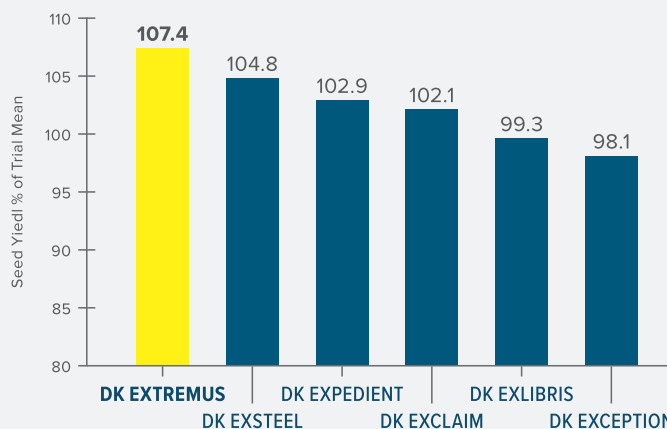
GROSS OUTPUT

DEKALB TAUNTON FACT STRIP TRIAL 2018



Source: Extract from DEKALB Taunton FACT Strip Trial 2018

BAYER UK BREEDING 2018 TRIALS



Source: Extract from DEKALB UK Breeding 2018 Trials (no fungicide treatment) - 5 sites - Mean Seed Yield 4.43t/ha

Contact us at uk.dekalb@monsanto.com or learn more at dekalb.co.uk



DK EXTREMUS

Registration Year: Extremus was registered in 2018
THE OUSTANDING NEWCOMER



KEY TRAITS



VIGOROUS ESTABLISHMENT

Proven ability to establish robust, well-rooted plants that are best able to cope with challenging UK conditions.



DOUBLE PHOMA RESISTANCE

The combination of the RLM7 gene and polygenic resistance provides outstanding, durable resistance to phoma stem canker and flexibility in fungicide application.



POD SHATTER RESISTANCE

Genetic resistance that minimises yield loss and volunteer issues caused by seed shedding up to, and during harvest.



EARLINESS SPRING REGROWTH

RECOMMENDATIONS

Seed rate should target an even plant stand of 25-30 plants/m² in spring.

The rapid autumn growth habit means a PGR may be appropriate in early/mid October on crops early sown or on fertile sites to reduce the risk of over development pre winter.

Light Leaf Spot should be monitored and treated as required.

BREEDER'S VIEW

“DK EXTREMUS is a very high yielding hybrid with high oil content. It features Pod shatter resistance and good stem characteristics along with high levels of resistance to stem canker and good light leaf spot resistance.”



MATTHEW CLARKE

Contact our National Account Managers:
tom.chillcott@bayer.com, 07976 397300,
lizzie.matthews@bayer.com, 07918 622318
or our Technical Development and Agronomy representative:
william.vaughan-france@bayer.com, 07768 507866

or learn more at dekalb.co.uk

DEKALB is a trademark of the Bayer Group.