

archer²TM

h a z l o c



Work Confidently in Hazardous Locations

From a process of evolution and refinement, the Archer 2™ has emerged faster, smarter, and more intuitive to bring you the ultimate compact rugged handheld. And now you can work in hazardous locations with the utmost confidence with the Archer 2 Hazloc, designed to perform safely where explosive gases, liquids, vapors, dusts, and fibers and flyings may be present. So wherever your job takes you, you can trust that the Archer 2 Hazloc will help you stay safe.



Archer 2 Rugged Handheld

Gets the Job Done

Archer 2 Hazloc not only provides unwavering safety in potentially-explosive environments, but also makes your job easier by eliminating the obstacles that slow you up. Whether you're headed to a petrochemical plant, gas and oil pipelines, a refinery, or another potentially explosive environment, Archer 2 Hazloc will help you get the job done fast, while keeping you and your data safe.

Contact us today to purchase the Archer 2 Standard, Geo, or Geo Cell model in the Class I, II, III, Division 2 version for hazardous locations.



HAZARDOUS LOCATION CERTIFICATIONS

- Class I, Division 2, Groups A, B, C and D
- Class II, Division 2, Groups F and G
- Class III
- Temperature Code: T6

ILLUMIVIEW™ HIGH-VISIBILITY DISPLAY

- Extra-large display for easy viewing
- Unparalleled brightness overpowers glaring sunlight
- Extremely scratch-resistant
- Capacitive touchscreen provides sharper image & durability
- Hold-to-zoom™ gives you absolute precision



OVERTIME TECHNOLOGY™ BATTERY

- Intelligent Li-Ion battery – 10600 mAh 3.7 V
- Outstanding battery life runs long into overtime
- Operates in extreme temperatures from -22 F to 140 F (-30 C to 60 C)

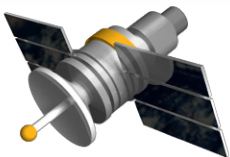
JUNIPER RUGGED™

- Your data has never been so well-protected
- Dustproof & waterproof (IP68 rating)
- Designed to MIL-STD-810G
- 2-year warranty



IT'S GOT IT ALL

- 1D/2D barcode imager
- Long-range Bluetooth® field tested to 1000 feet
- Speedy 1.0 GHz processor
- Simultaneous GPS and GLONASS capabilities
- 5 MP camera + video capture
- Wi-Fi®, cell modem, serial, & USB connectivity



Applications

- LDAR
- AM/FM
- Preventative Maintenance
- Waste & Materials Management
- Refueling
- Industrial Equipment Maintenance
- Petroleum & Petrochemical Rounds
- Rig Floor Operations
- Well & Mud Logging
- Safety Inspections
- Compliance Tracking
- Spill & Incident Reports
- Fugitive Emissions Monitoring
- Fuel Distribution & Delivery

For partnership inquiries, please contact Juniper Systems at sales@junipersys.com