

# LABEL VERIFICATION

with **GRANTEK**

CONSULT  
DESIGN  
DELIVER

Grantek's Label Verification Solution provides limited to no loss of plant footprint, instead of adding a new conveyor/camera system, we mount on the line, saving valuable plant floorspace. This solution can also confirm packaging against actual Quality Specs and the Bill of Material. To do this Grantek uses industry standard hardware, which ensures flexibility for the future and so plants can maintain the system if independently if desired.

## WHO?

- Food & Beverage Manufacturers
- Health Claim Foods or products

## HOW?

- Single Source of Truth
- Non-Proprietary Hardware/ Software
- No/low Footprint Installation
- Video-based Training and Best Practices

## WHY?

- Prevent Recalls
- Save Costs
- Maintain Compliance
- Save Reputation

“FROM THE **PLANT FLOOR**  
**TO THE BOARDROOM,**  
GRANTEK PROVIDES A  
**COMPLETE SOLUTION FOR**  
**LABEL VERIFICATION** “

---

## OUR SOLUTION IS:

- Fully customizable
- Field adjustable
- Easy to stock and support
- Compatible with all Cognex models
- Easy to center-line
- Connected with production lines

# LABEL VERIFICATION

## HOW IT WORKS

As a CSIA certified control system integrator, Grantek knows that automated product validation is critical to regulatory compliance and quality control. Real-time live images, stored missed images, and an intuitive user interface provide maintenance and operators with all the information needed for seamless integration into any existing production line, or as part of a new installation. Our solution is in alignment with American & Canadian regulations, helping you mitigate the Food Safety risk with undeclared allergens.



### BARCODES

Readers scan barcodes, which represent that packaging component's material number



### OCR / OCV

Optical Character Recognition & Optical Character Verification



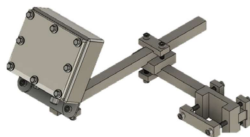
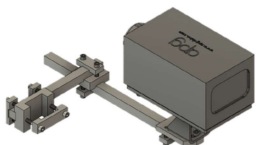
### PATTERN MATCHING

Where barcodes are not possible, the camera looks for a pattern unique to that packaging

“ **GRANTEK** CAN SOLVE LABEL VERIFICATION **ACROSS YOUR ENTIRE ORGANIZATION** “

### GRANTEK CAN PROVIDE LABEL INSPECTION FOR:

- On Film Inspection
- In-line Inspection
- 360 Degree Inspection
- 1D or 2D Barcodes
- Defect Detection
- No Barcode - Pattern/OCV
- High Speed Applications
- Code Date Content and Quality

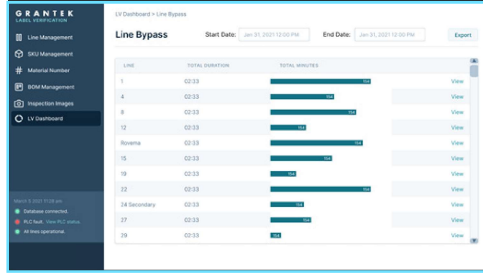


# COMPONENTS & DETAILS

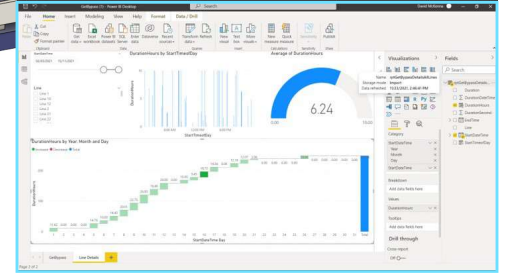
## REPORTING CONCEPTS



LINE OVERVIEW



LINES BYPASS



POWER BI

## OUR COMPLETE SOLUTION FOR LABEL VERIFICATION CAN PROVIDE:

01

### LABEL VERIFICATION

Verification of any 1D or 2D barcode from UPC to Data Matrix to Code 128. Expertise with full vision toolsets allows for label verification even on packaging without any barcode.

02

### CODE DATE INSPECTION

Grantek can seamlessly integrate code date or serialized on-demand printing inspection as part of a full packaging validation solution.

03

### DEFECT DETECTION

The flexibility of our solution allows for integration of full machine vision toolset cameras for defect detection, including: over/underwrap, carton counting in bundles, or improper/damaged packaging.

04

### CUSTOMIZATION

Industry standard PLC, HMI, and vision hardware allows for full customization of functionality, user interface, run rules, line interface, and reject control.

05

### SKU MANAGEMENT

Integration with other systems to provide SKU lists, BOM's automatic SKU selection/line changeover or web-based SKU management and local changeover where other systems are not available.

# BENEFITS OF GRANTEK'S SOLUTION



## INSPECTED PACKAGING MATERIALS

- Film (Transparent, Shiny, & Rigid)
  - Carton (Trays, Shippers)
- Pre-Printed Labels (On Glass/Plastic/Steel)
- Containers/Dispensers (360 degree solution & Top Lid Inspections)



## CENTRALIZED BARCODE MANAGEMENT & REPORTING

- Minimize Operator's role in SKU selection
- Reporting for sites to understand system performance, and where and when packaging issues arise



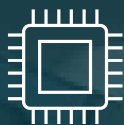
## SCALABILITY

- Add inspection onto existing conveyors & machines to save room on plant floor
- Industry standard hardware maximizes compatibility to other systems
- Video-based training at enterprise level



## PERFORMANCE

- Pass/Fail/Miss Counts
- Real-Time and Saved Missed Images at HMI
- Customizable Interlocks
  - Line Reset



## ROBUST FUTURE-PROOF NON-PROPRIETARY SYSTEM

- Avoid licensing fees and maintain your own install with industry standard hardware
- Easily expendable for future product changes or other quality inspections



## EXPERTISE THROUGH ALL PHASES OF THE PROJECT

- Corporate "Playbook" Program Guidance
  - Requirements Gathering
  - Preliminary Engineering
    - Turnkey Installation
- Commissioning & Support