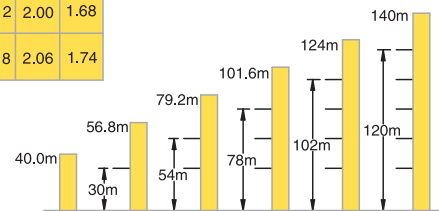


TC 6040B Tower Crane

5 t

Load Capacity

Jib Length	Radius (m)		Radius (m)																		
	Hoisting Load (t)	Icon	2.5-18	20	22	24	26	28	30	32	34	36	38	40	42	44	46	48	50	54	60
60m	5.00	🏗️	4.51	4.04	3.65	3.32	3.04	2.80	2.59	2.41	2.24	2.10	1.97	1.85	1.74	1.64	1.55	1.47	1.32	1.14	
		🏗️	2.50										2.30	2.16	2.03	1.91	1.80	1.70	1.61	1.53	1.38
54m	5.00	🏗️	4.83	4.33	3.92	3.57	3.27	3.02	2.79	2.60	2.42	2.26	2.12	2.00	1.88	1.78	1.68	1.44			
		🏗️	2.50										2.32	2.18	2.06	1.94	1.84	1.74	1.50		
48m	5.00	🏗️	4.83	4.33	3.92	3.57	3.27	3.02	2.79	2.60	2.42	2.26	2.12	2.00	1.68						
		🏗️	2.50										2.32	2.18	2.06	1.74					
42m, 36m	5.00	🏗️	4.83	4.33	3.92	3.57	3.27	3.02	2.79	2.60	2.42	2.00									
		🏗️	2.50										2.06								

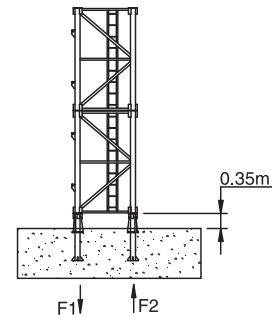


Anchorage Diagram

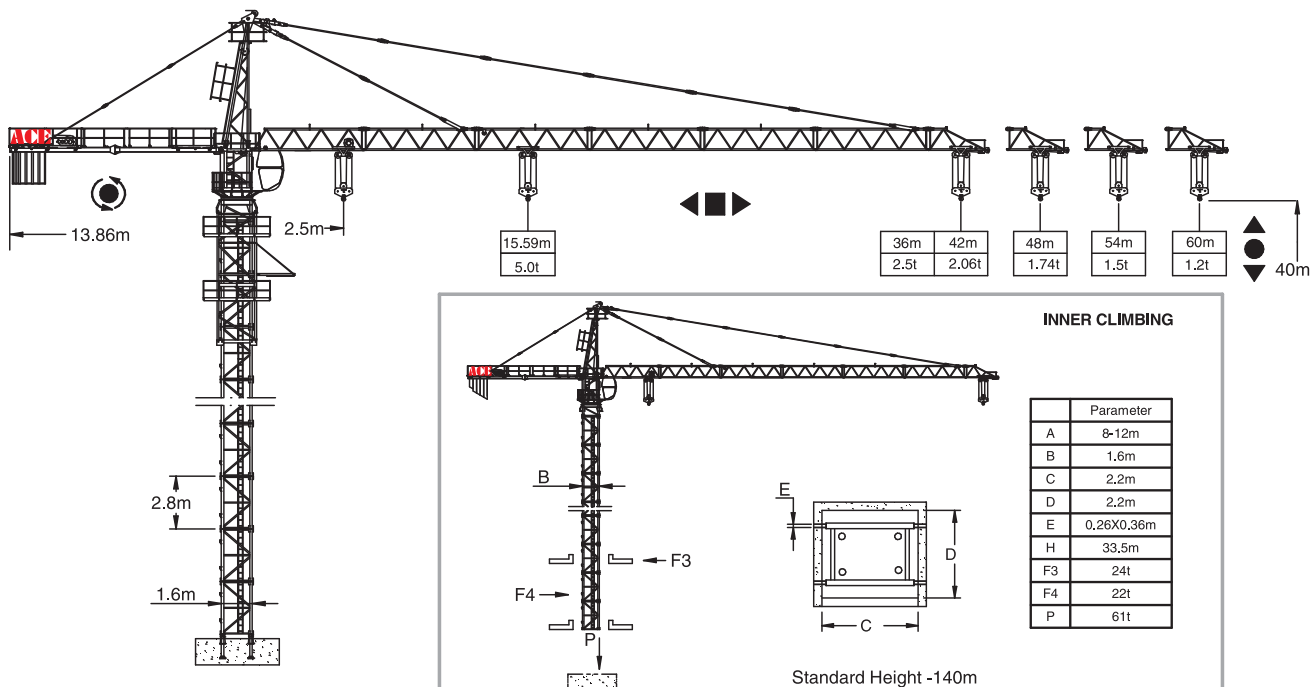
Specifications

Hoisting	No of Falls	🏗️	🏗️				
	Speed (m/min)	11.75	40	80	5.87	20	40
	Hoisting Load (t)	2.5	2.5	1.28	5	5	2.56
	Power (kw)	5	18	18	5	18	18
Slewing	Speed (rpm)	0 ~ 0.6					
	Power (kw)	2 x 2.2					
Trolley	Speed (m/min)	20		40			
	Power (kw)	2.2		3.3			
Climbing	Speed (m/min)	0.55 - 0.7					
	Power (kw)	7.5					
Main Supply	415V / 50Hz						
Electric Power	25.7 kw (32.1kVA)						
Variant Model	6 Ton. Max Capacity Mechanism at 15.53 M						

Outrigger Stationary



F1	◇ 81t	△ 96t	🏗️
F2	◇ 61t	△ 75t	34.8t



Standard Height -140m

F Reaction ◇ In Service △ Out of Service 🏗️ Dead weight without load and counter weights but with longest jib and free standing height.
P - Vertical Load