

TODD

TODD

Healthcare

Contents

	Introduction
01	Primary Care
02	Enhanced Local
03	Acute
04	Mental Health & Elderly Care
05	Support & Related
06	Masterplanning & Development Control Contact

Introduction Healthcare

Healthcare design requires a deep understanding of medical planning, operational needs, specific user client aspirations and an appreciation of context and setting.

Todd Architects expertise covers all aspects of:

- (i) medical design ranging from large scale masterplans and estate development strategies to the modest remodelling of existing buildings and;
- (ii) procurement routes such as traditional, Design + Build, Performance Related Partnering (PRP) and Public Private Partnerships (PPP).

The practice has developed close working relationships with knowledge-rich health sector experts. Additionally in-house specialist teams are actively encouraged to expand their knowledge through research programmes, involvement with 'Architects in Health' and other CPD opportunities.

The achievement of a high standard of design quality in a completed building is most directly evidenced in its recognition within independently accredited awards programmes. Our healthcare projects have received a range of awards nationally from professional bodies including the RIBA, RICS, RSUA as well as being cited in the International Healthcare awards.

01 Primary Care

Healthcare

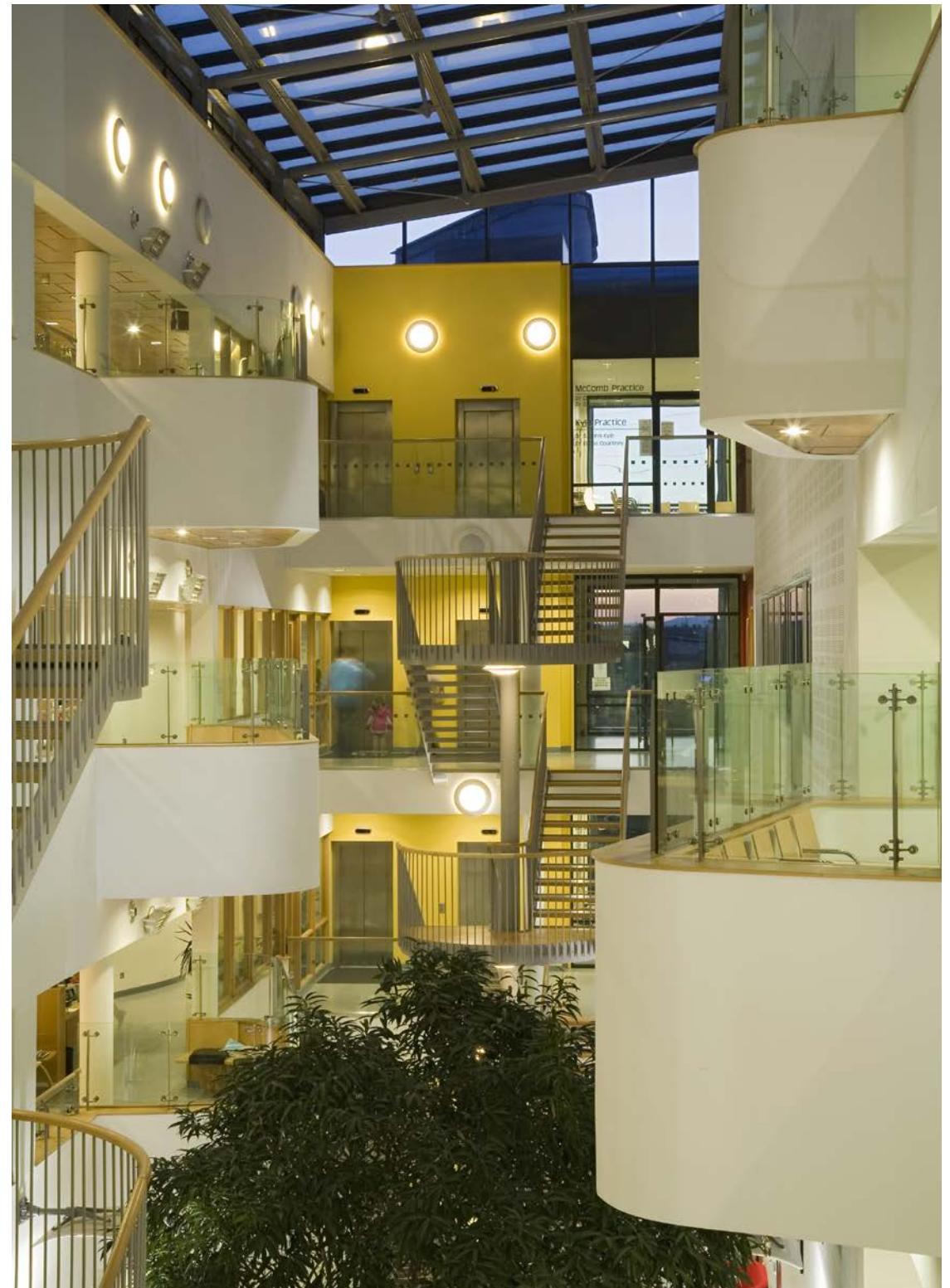
Primary Care

The focus on a 'patient pathway' which establishes a route through the health service - from initial consultation to completion of treatment - has led to the creation of a new model for primary care services, commonly referred to as Health and Well Being Centres or Community Treatment and Care Centres.

A 'one-stop shop', these facilities typically include: GPs, consulting and treatment suites, physiotherapy, paediatrics, dentistry, occupational and speech therapy together with social services such as homecare, primary mental health teams and outsourcing centres.

The latest development of this model of care is at Omagh Hospital & Primary Care Complex which incorporates GP's with its benefit of examination and treatment facilities on site.

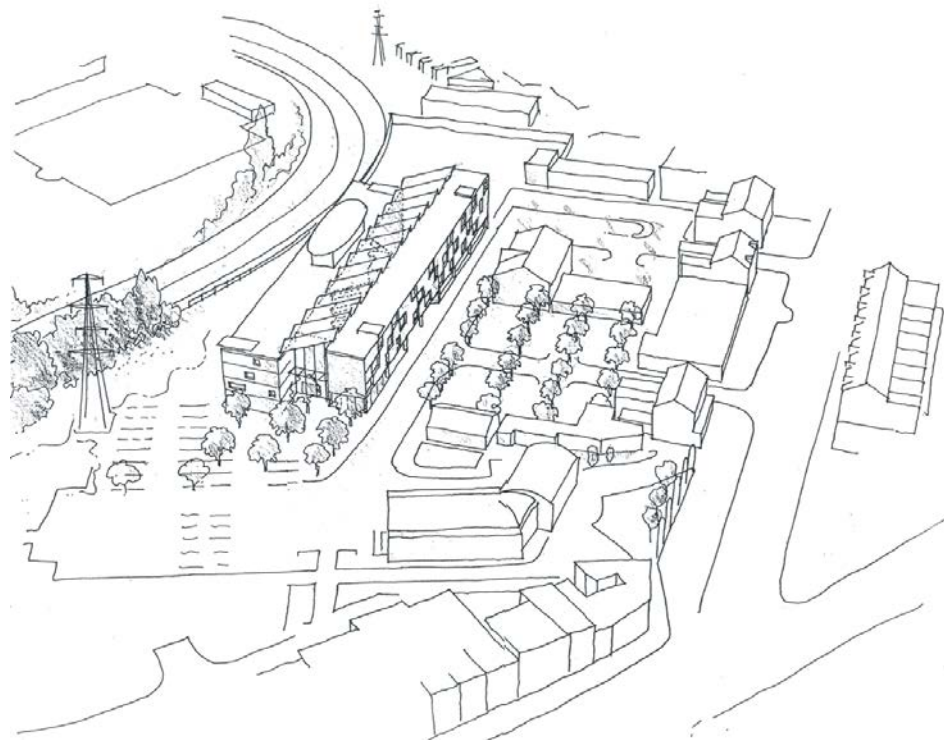
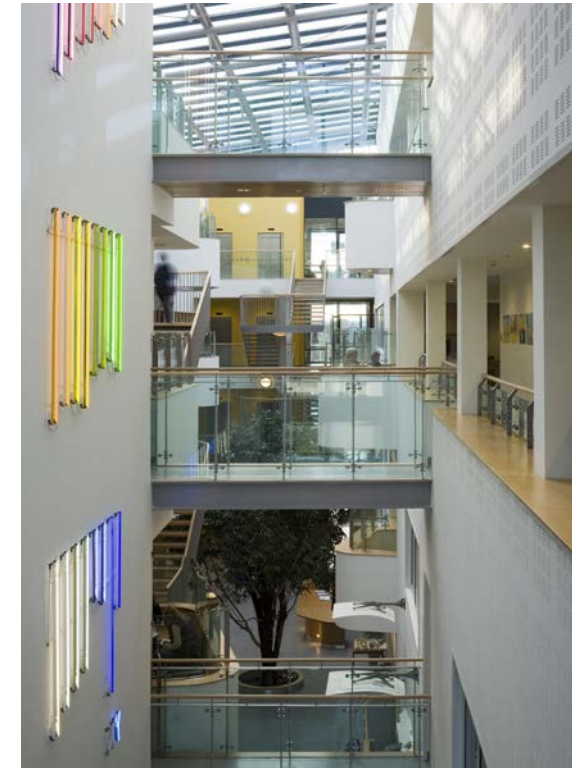
The practice has now completed six of these buildings in Northern Ireland and has developed proposals for a similar type of facility for the Health Service Executive and the Alpha Healthcare Group in Killarney.

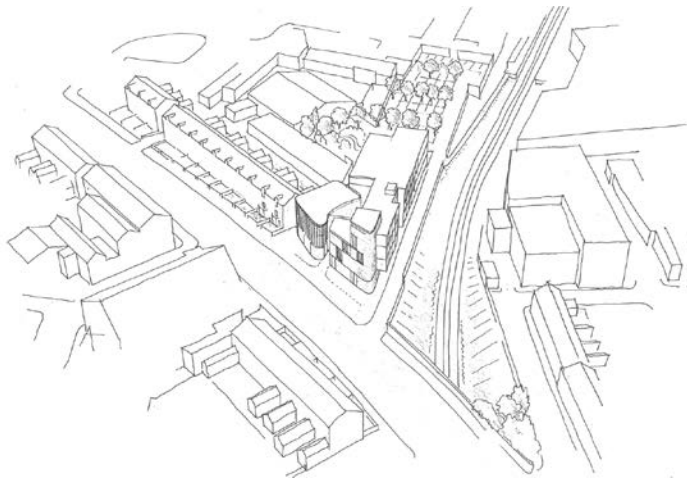


The Arches Community Treatment and Care Centre, Belfast

The Arches Centre was the first of three Community Treatment and Care Centres delivered for the South & East Belfast Trust. The centre accommodates a wide range of facilities including GP accommodation, a dental department, podiatry and physiotherapy to name but a few. The building is a mixture of new build and extensive refurbishment including the restructuring of existing facilities.

The new build section was completed in August 2004, constructed adjacent to the existing building, the space between the two parts forms an atrium which accommodates the main circulation routes and waiting areas. The building has its own unique identity. Externally it is distinctive by its coloured window patterns whilst internally the spaces arranged around the atrium bring both interest and a sense of activity to staff and patients alike.





The Bradbury Treatment and Care Centre, Belfast

This Community Treatment and Care Centre is one of three new centres developed by South East Belfast HSS Trust. The other two are located at Holywood Arches and Castlereagh. Todd Architects and Penoyre & Prasad were selected in competitive interview to design and procure these three schemes. The 4,500 m² Lisburn Road scheme is located on a brown field site on the edge of the city centre and near to the main Belfast/Dublin railway line. The building volume has been concealed as two parts: a long rectilinear block running parallel to the railway and an organic form which runs between this block and the neighbouring terrace. A central three storey atrium space is located at the junction of these two parts.





Knockbreda Treatment and Care Centre, Belfast

The third Community Treatment and Care Centre designed for the South East Belfast HSS Trust sits on a greenfield site located within the grounds of Forster Green Hospital, Belfast. Todd Architects worked jointly with Penoyre & Prasad in the design and development of this innovative centre which offers a 'one stop' approach to delivery of a range of healthcare services. This scheme is unique in many ways from its sister schemes, (Holywood Arches and Lisburn Road), in that it is situated on a steeply sloping greenfield suburban site. The creation of a central atrium and careful selection of materials is common to all three schemes. The centre was completed in 2008 and opened to its local community in 2009. It received RIBA regional award in 2009.





Carlisle Health and Wellbeing Centre, Belfast

The Carlisle Centre houses a number of clinical and social care services for the community, whilst serving as a base for outreach staff teams. Floors are zoned to allow for public and clinical spaces to be located at either ground or first floor, with level access provided at each of these zones due to the level change across the site. The upper floors are accessible by staff only, with open plan office accommodation located at second floor level and the third floor providing a staff dining area with south facing terrace which affords views over the internal courtyard.

The two public entrances are linked by a three storey internal 'street' which acts as the key organisational device and allows views through to the landscaped, stepped, feature garden. The change in level provides spill out areas from inside to out with the external café area at ground floor strategically separated from the children's external play area at first floor. The external envelope has been designed with a view to providing an attractive and striking aesthetic whilst acknowledging the desire for durability of materials and requirement for security which is integral to the design.





Beech Hall Wellbeing and Treatment Centre, Andersontown, Belfast

Beech Hall is one of three new Health and Well Being Centres designed for The Belfast Health and Social Care Trust as the result of a design competition in July 2003, won by TODD in collaboration with London based Architects, Penoyre & Prasad.

Constructed on a steeply sloping green field site on a busy main thoroughfare into Belfast City Centre. The five storey building enhances the streetscape, consisting of two staggered wings allowing for a public block to the front and a staff wing to the rear. The blocks are designed to an optimum width to allow for natural ventilation and cooling. The slope of the site is cleverly utilized to minimize the massing to the street, with the two wings linked by a glazed bridge that connects at second floor level through the tree tops. The main pedestrian entrance is accessed via Andersonstown Road, giving the building civic presence and improved public accessibility. A ramped terrace provides access to the main reception and allows privacy to the clinical spaces beyond from the footpath. This change in level also allows level access from the car parking tucked away to the rear. The two wings have been designed to have a striking aesthetic. Steps in heights allow for green external areas and further voids in the elevations. The project started on site late 2008 and Opened to the public in April 2011.



Shankill Wellbeing and Treatment Centre, Belfast

Shankill Road Health and Wellbeing Centre is one of three new centres designed for the Belfast Health and Social Care Trust. The others are Lincoln Avenue and Andersonstown Road, each will serve a population of 70,000. Each Centre will aim to offer a one-stop approach to service delivery by providing a focal point for care within community based centres. The 4,800 m2 scheme will sit between the existing club and church and will have prominent frontage onto Shankill Road. The accommodation will be along an internal street, with an atrium at the heart of the building. The accommodation is organised within 2 linear blocks parallel to the main arterial route of the Shankill Road. The blocks are connected by a glazed internal street which creates two internal courtyards hidden from the street. The project started on site late 2008 and opened to the public in 2011.

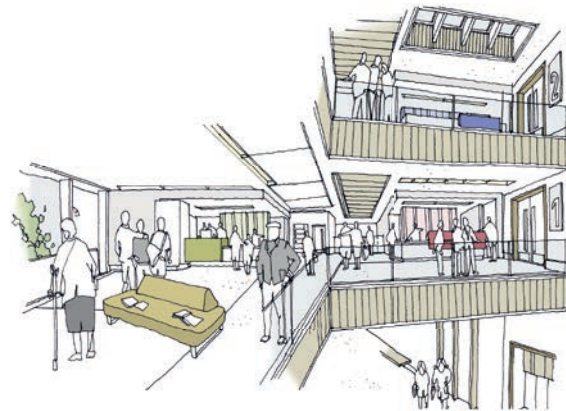




Lisburn Community Treatment & Care Centre, Lisburn

This Scheme was developed as a private development project to deliver primary care.

Situated on an existing hospital campus we developed up a scheme utilising experience gained from it's delivery of various Primary Care complexes.



Newry Community Treatment & Care Centre, Newry

This scheme was developed as a private development project to deliver Primary Care.

Situated on a rural site it embraced experience gained as recently completed PCCI projects. High quality design was incorporated with a need for a scheme that offers Operational practicality and efficiency.



02 Enhanced Local

Healthcare

Omagh Enhanced Local Hospital

Enhanced Local Hospitals are a new model of care built around smaller local hospitals. This model facilitates healthcare in the community, closer to people's homes and integrates the breadth of primary care such as GP's AHP's, Community Nursing, with aspects of secondary care facilities. The types of medical specialties which will be provided include, day procedures, consultant clinics, dialysis, chronic disease management, minor injuries, imaging.

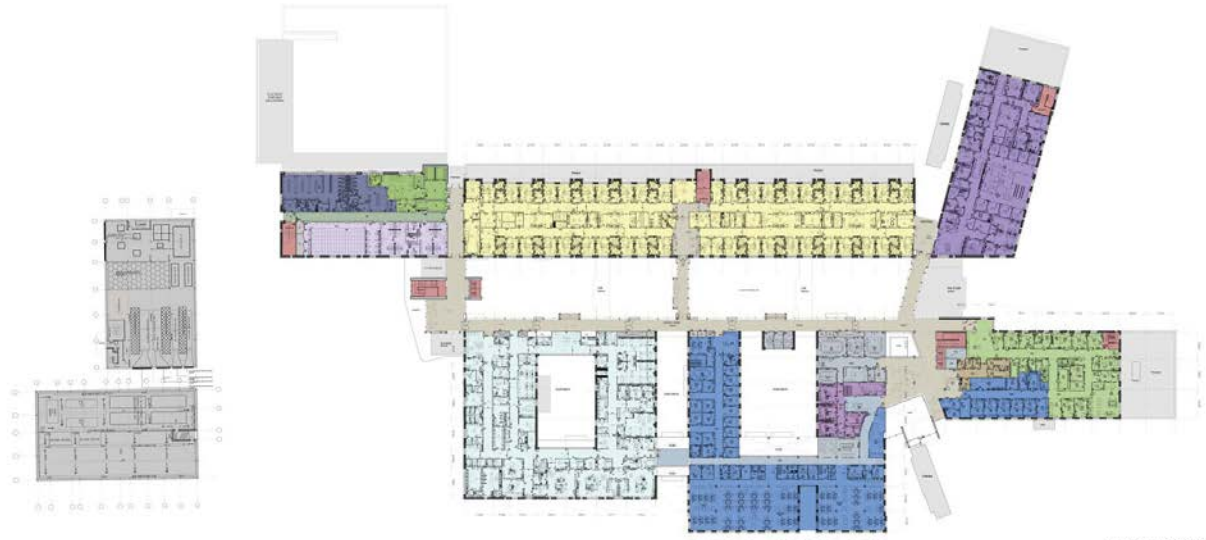
Due for opening in early 2017, this new way of providing healthcare fits with the strategic direction of healthcare across the UK and we are in a unique position to deliver this innovative building type due to our extensive experience in both primary and acute healthcare facilities.



Omagh Enhanced Local Hospital



Omagh Enhanced Local Hospital



FIRST FLOOR PLAN



GROUND FLOOR PLAN

03 Acute

Healthcare

Acute

Hospitals are amongst the most complex of building types, their design driven by multi-layered briefs, and demanding operational policies, necessitating knowledge of present and predicted clinical provision.

Pragmatic concerns must be balanced with a desire to create, environments which inherently make people feel better. It is this principle that guides our practices philosophy in the sector.

Each of our solutions responds to the specific brief, client aspirations and context, lifting them above the norm. 'In between spaces' – often not specifically identified within accommodation schedules characterise many of our design responses.



Emergency Departmental Medical Ward, Antrim Area Hospital

This Emergency Department has been designed and procured to meet a Fast Track Programme and will cater for 90,000 attendees per year with 27 treatment /assessment rooms, 5 bay resuscitation rooms and associated 18 bed assessment unit. The department will be fully integrated and linked to the existing hospital and has also been designed to meet current standards with separated minor and major / adult and paediatric patient flows. It includes new X-ray rooms and a CT scanner unit. The project incorporates a new 24 bed medical ward located above the new emergency department, designed with 100% single bedrooms.



Royal Belfast Hospital for Sick Children

The project was awarded as the result of winning a design competition in which 6 teams were short-listed and requested to submit scheme designs. Todd Architects, as lead consultant of the winning team, were not only responsible for the design but for the co-ordination of all consultant disciplines and were charged with ensuring the scheme was completed on time and within budget. The management of this complex project involved close liaison with representatives of both user and client bodies and the direction of the other consultants on the design team. The hospital was awarded the Liam McCormick Award in the RSUA Design Awards 2000.



Letterkenny General Hospital

A major 4 storey development containing a ground level Emergency Dept and Medical Assessment Unit and 3 upper floors of medical wards. The ED has been designed to latest medical planning principles with separate streams for minor, major and paediatric patients, to serve up to 40,000 attendances per year. The MAU contains patient assessment & examination facilities, finishing in close association with the ED. The ED and MAU contain a full range of patient treatment and examination facilities - treatment rooms, consult / exam rooms, mental health / psychology services, ophthalmology treatment, gynae treatment, paediatric treatment and support and general purpose X-ray. The department maximises the benefits of natural light to all clinical areas, along with good staff observations. Circulation is designed with a clear and coherent layout, and efficient flows between waiting, sub waiting and treatment and assessment areas, as well as good separation of critically ill patients. High standards of interior design and effective wayfinding have been achieved.

The project required a new road entrance, internal ward network and car parking, as well as construction of other ancillary buildings required to maintain continuity of service on the site (energy centre, hospital waste building, and mortuary chapel). The project was procured and administered using the Public Works Contract, including additional administration services following the liquidation of the main contractor.



Mater Hospital Redevelopment

The design of the hospital evolved out of the need to rationalise and clarify prevailing access and circulation confusion created by the presence of diverse building forms and locations and vehicular inaccessibility. Lack of site area, the presence of listed buildings and the need for the new ward accommodation to be near existing operating theatres imposed further demands and disciplines of the design development.

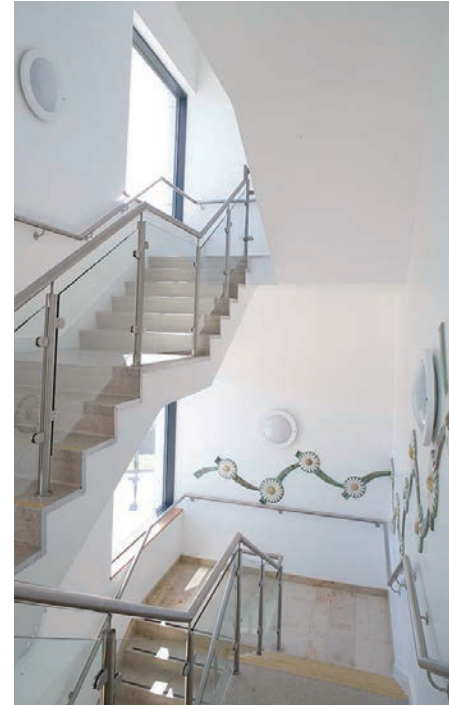
The redevelopment content includes: 150 Bed Wards; Day procedures unit; Physiotherapy unit; and Administration accommodation. All serviced by a new entrance and atrium reception area which introduces a homogenising element to the otherwise disparate building forms.

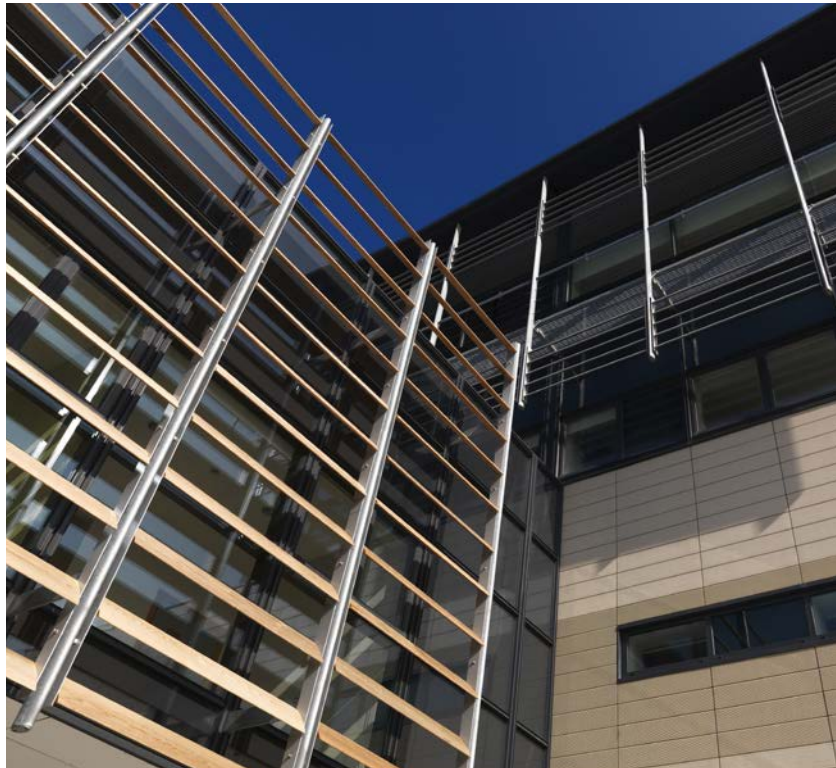


Maternity Unit, Ulster Hospital

Secured following a competitive interview process, this commission replaces the somewhat dated existing hospital maternity unit, with a new state of the art facility, incorporating outpatients departments, delivery suites, special baby unit, wards and home from home suites. A costed option appraisal study examined various redevelopment configurations, with a new-build, stand alone building being the preferred arrangement.

The project developed along aesthetic guidelines established within a design guide for the entire hospital complex, also prepared by the practice.





Critical Care Complex, Ulster Hospital, Belfast

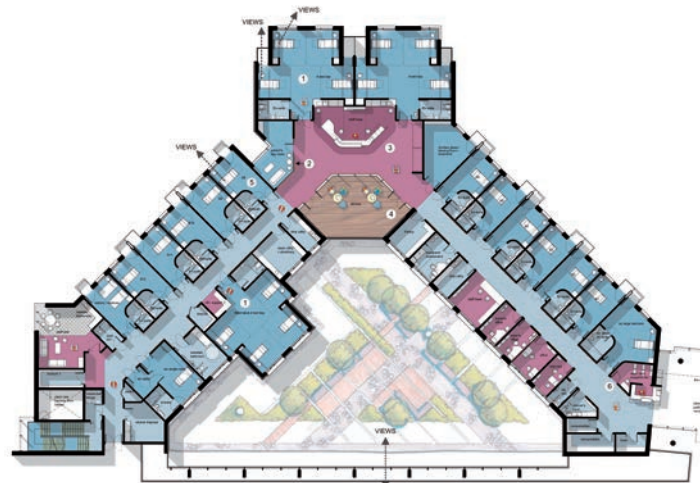
Todd Architects were appointed following a competitive interview process as Lead Consultant and Architect for the delivery of the Critical Care Complex at Ulster Hospital in Dundonald. The development includes provision of new theatres, recovery suite, intensive care unit, high dependency unit, CSSD, laboratories and administrative facilities. The state of the art building and facilities is compliant with the highest standards for such a development and increases the number of theatres, recovery beds whilst improving the through flow of patients and staff facilities. The complex has been designed to allow for future expansion and expected increase in demand for services over the next 15 years. The building extends over four principle floors, with the two lower levels covering much of footprint of the somewhat confined site, with the upper levels split into two wings, divided by a landscaped courtyard that introduces natural light into the depth of the plan. Externally the restrained palette of materials established by the practice to direct future development in the hospital is, further articulated by projecting zinc clad elements that identify the theatres within the building.



South West Acute Hospital, Enniskillen

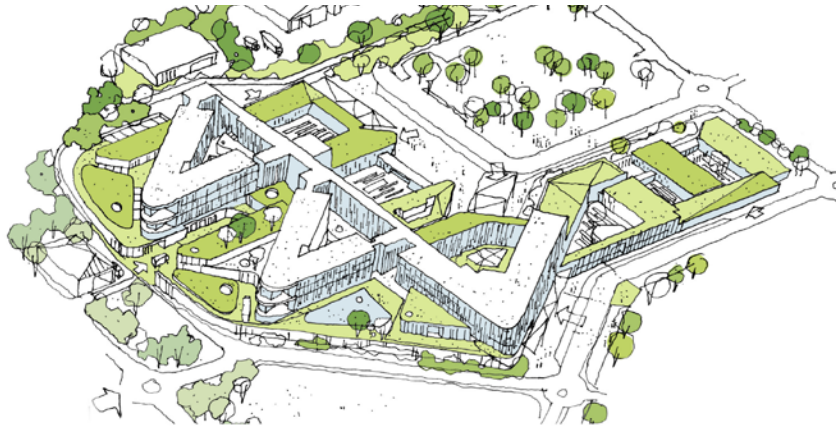
The practice was appointed with local architects Hall Black Douglas and health planners Watkins Gray International, following a competitive interview process to prepare an exemplar design for a new £250m major acute hospital for the south west of Northern Ireland. With procurement proceeding under a PFI contract, this exemplar approach was introduced by the commissioning bodies both with a view to increasing design quality, whilst also reducing bidding costs.

Approximately 60,000sqm the new hospital is located on the outskirts of Enniskillen Down on a sensitive green-field site over looking Lough Wolf. The project incorporates a full range of facilities required in a modern acute hospital. Full accident and emergency services, imaging, theatres, various ward and a host of out-patient facilities are included, designed to integrate into the countryside and benefit from the views to both the hills and lake. The design and procurement has proceeded through government review and PFI processes.



WARD REFERRED TO
(LEVEL 1 SURGICAL WARD)





Craigavon Area Hospital, Redevelopment & Masterplan

In 2014, Todd Architects secured the appointment for the framework to redevelop most of the Hospital Campus and input to inform the business case and Redevelopment Proposals. The hospital is a regionally significant acute hospital with an extensive range of departments and services including:

- Primary Care
- Ambulatory Care
- Chronic Disease Management
- Acute/Intensive Care

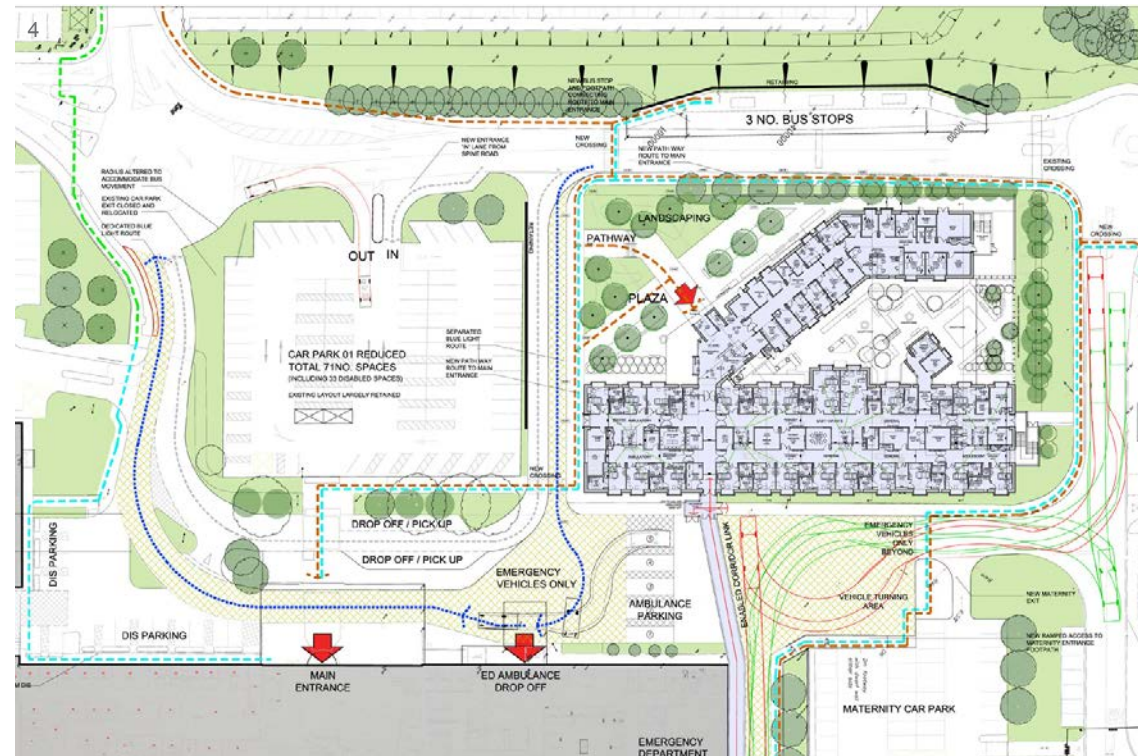
We have developed initial proposals for a new hospital building and site Masterplan for the redevelopment of the building, which is planned in a number of phases. Our role has required extensive engagement with clinicians and end users to develop the Masterplan proposal. It can be delivered to suit the new and envisaged vision for delivery of healthcare provision at this site. Departments include: Children's Wards; Theatres; Intensive Care Unit; Critical Care Wards; Day Procedure Units; Cancer Care; Care for the Elderly; Surgical Wards; Medical Wards; and Support Accommodation such as CSSD, Laundry, Energy Centre etc.



Craigavon Paediatrics Unit, Craigavon

The new paediatric unit is the first building project in a proposed phased master plan development for the Craigavon Hospital site. The paediatric unit is a stand-alone building, generally single storey in height with plant accommodation sited above the south westerly block forming a two story folded roof element creating height and scale wrapping over the double height main entrance foyer area giving the building form and character. The design addresses the issues associated with the short term integration with the existing hospital as well as the longer term aspiration and consideration for the Masterplan.

The departments within the paediatric unit are arranged around the main entrance foyer which is the main point of public access to the building. A central entrance canopy formed from the folding roof provides a sheltered area for clients and visitors arriving to the building, and creates a focus point with visual links to through to the courtyards behind the reception.



Sulaiman Al Rajhi Teaching Hospital, KSA

TODD architects were engaged from inception through to the detailed design of this university teaching hospital near Riyadh. Our role involved collaboration with the end users and stakeholders in developing the healthcare planning.

This scheme is being advanced to construction stage at present.



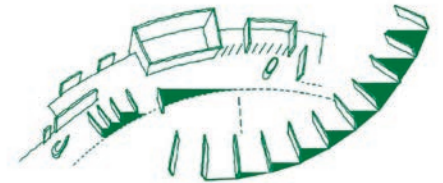
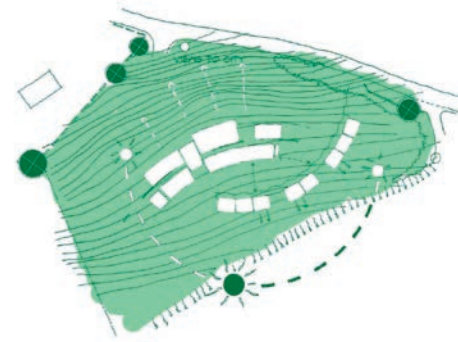
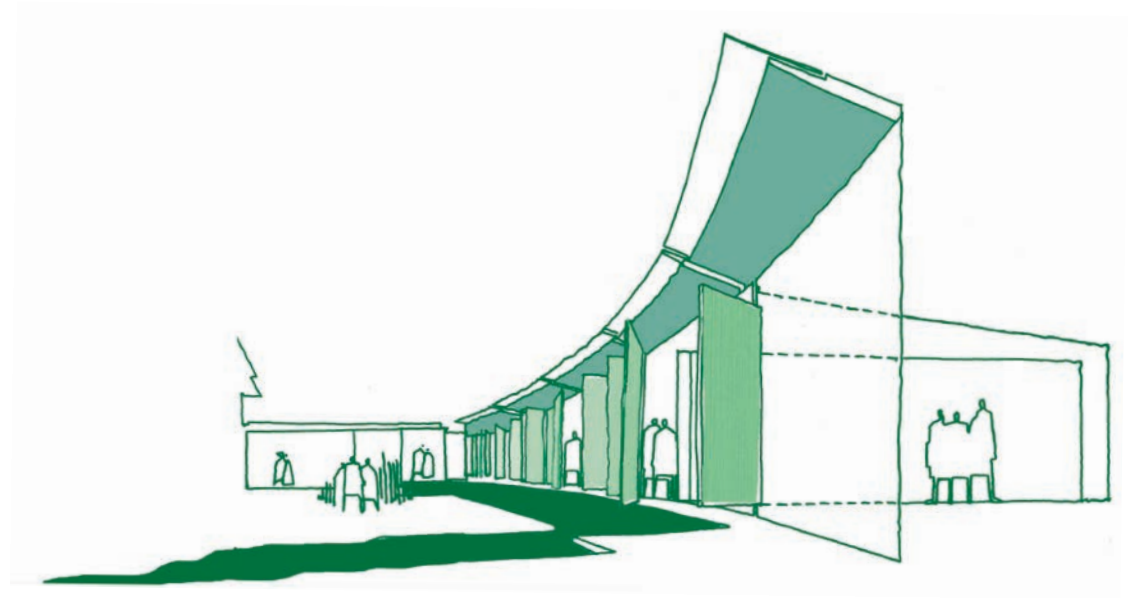
04 Mental Health & Elderly Care

Healthcare

Mental Health & Elderly Care

Poor mental health is the largest cause of disability in the UK. It's also closely connected with other problems, including poor physical health and problems in other areas like relationships, education and work prospects. To improve these aspects of people's lives it has been acknowledged that here is a need to make improvements to mental health and wellbeing. We have been and are involved in the design of facilities that deliver care and recovery through innovative environments, which are safe, secure and comforting.

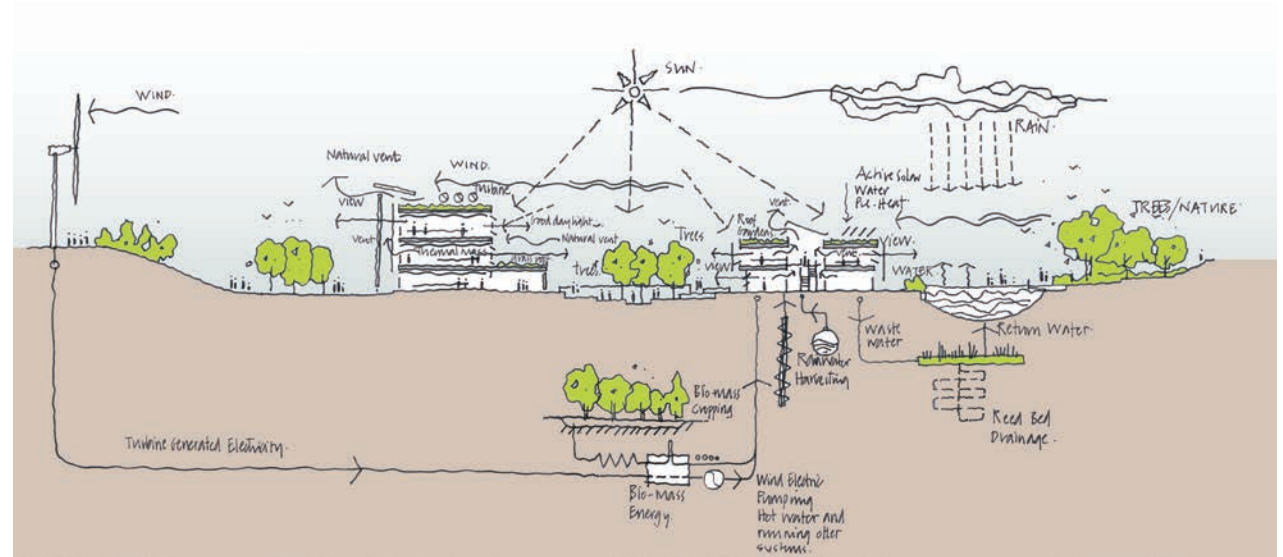
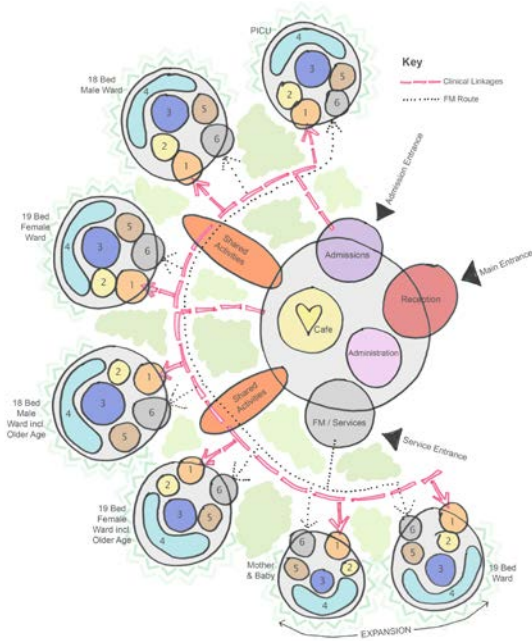
An ageing population has led to increasing numbers of patients requiring on-going geriatric healthcare. The proportion of residents in care homes who have dementia is rising and this has led to an increasing demand for specialist care homes providing high quality care. We are involved in this growing field of healthcare and delivery of this specialist service.



Mental Health Unit Competition Proposal, Belfast City Hospital

This scheme was submitted as selected design competition for the Belfast Trust. The scheme on a 'Live' hospital site was based around a series of landscaped courtyards.

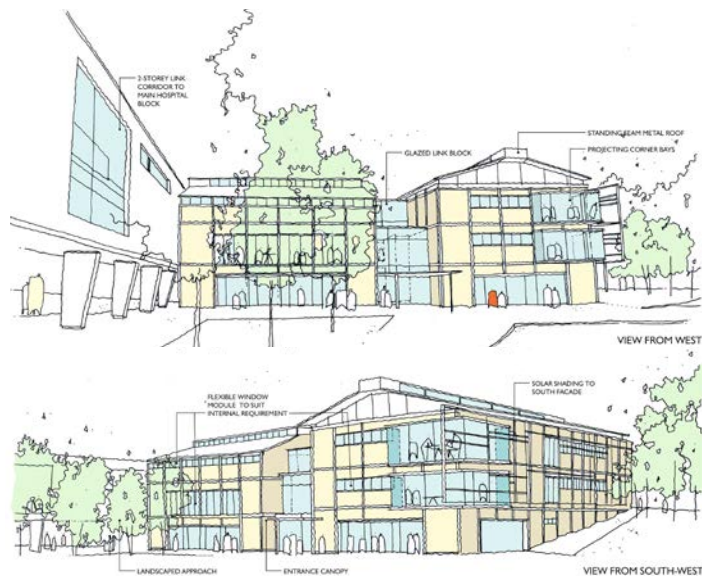
The project had a series of new profiles but all spaces carefully intergrated requirements for pateint safety, dignity in a contemporary design embracing current best practice in mental health design.



05 Support & Related

Healthcare Support & Related

The health sector covers a broad spectrum of building types outside of those most commonly associated with acute and primary care provision. Those which the practice has successfully delivered range from regional supplies services accommodation, to medical laboratories, mental healthcare provision, pathology units and mortuaries. In the related bio-medical field, we have completed major research facilities for both Queens University Belfast and the National University of Ireland, Galway.



Ballymena Ambulance Station, Co. Antrim

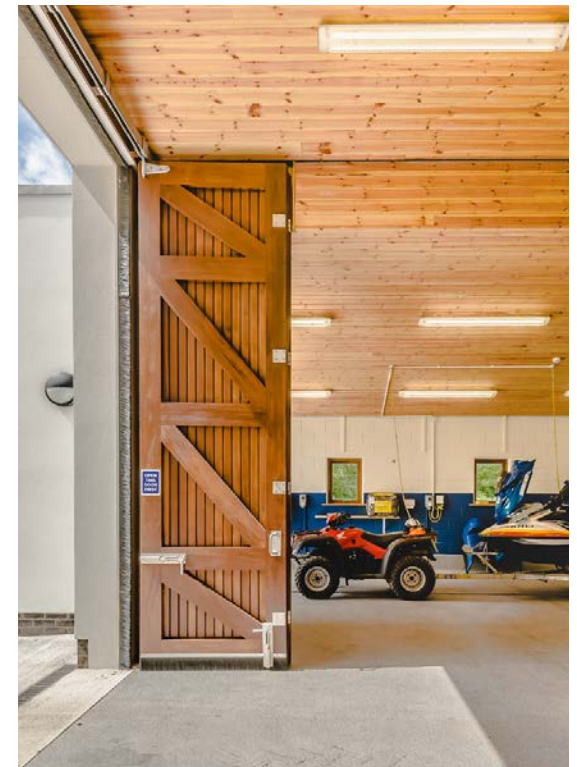
This project will provide the Northern Ireland Ambulance Service with a new Ambulance Hub on the Ballee Road, to serve the population of Ballymena and surrounding areas. Replacing the existing ambulance station at Braid Valley Hospital, and providing increased accommodation to house 45 no. staff, 5no. ED vehicles, 4no. RRV, 3no. PCS vehicles, Divisional HQ accommodation for the Northern Area and a 25 seat conference room.



RNLI Station, Lough Erne

RNLI's first permanent inland lifeboat station at Upper Lough Erne, Carrybridge in county Fermanagh. The modern station will replace the temporary accommodation which has housed the charity's volunteer lifeboat crew for the past 13 years. The new station house an inshore lifeboat and launching tractor, rescue water craft (RWC) and quad, a relief RWC, mechanics room full crew changing facilities on the ground floor. The crew's new training facilities, main office and storage room is located on the first floor. Outside the lifeboat and RWC will launch down a newly built, state-of-the-art slipway.

The new station is designed with a ground source heat pump, keeping the temperature within the boat hall at an ambient 15 degrees Celsius. The excess is used to heat the water for showering, washing up and cleaning the vessels. The scheme was developed as a catalogue design, and TODD Architects are currently supporting a number of RNLI projects including new inland lifeboat stations at Lough Derg Tipperary; Lough Ree, Athlone and Lower Lough Erne, Killydeas.



Medico Legal Centre, Dublin

This scheme is a joint venture between Dublin City Council and the Department of Justice to provide a state of the art mortuary facility capable of serving all of Ireland. The building design has been developed by McCullough Mulvin Architects with Todd Architects appointed for the building fit-out. The scheme occupies a site in Marino, north Dublin, part of the fire brigades head quarters. It contains two double height PM rooms, 60 person body storage, forensic laboratory and associated offices. The building has quality finishes, generous spaces and is intricately detailed to provide a working environment for its operatives along with sensitive areas for body identification.

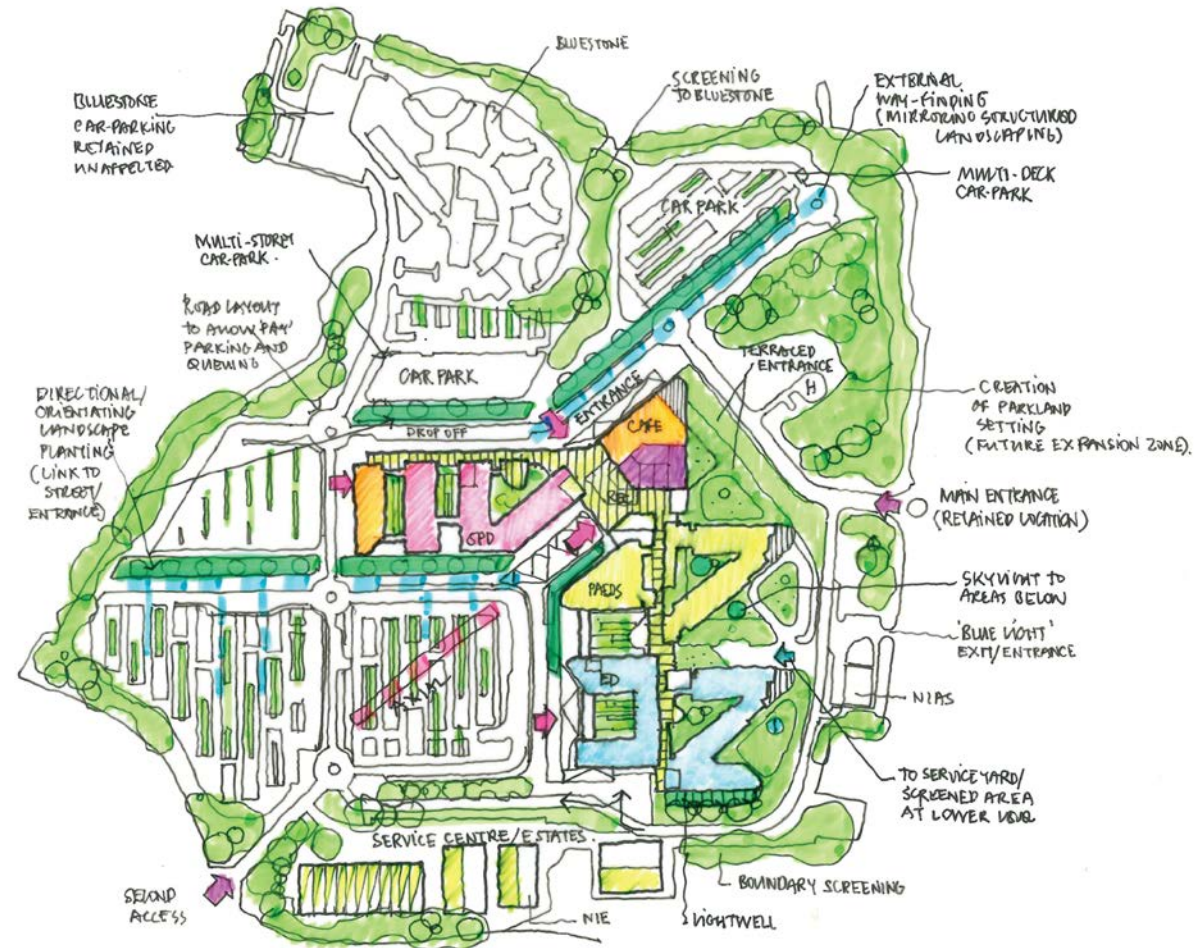


06 Masterplanning & Development Control

Healthcare Masterplanning & Estate Development

The pace of clinical innovation and changing patterns of healthcare provision places particular demands on the long term strategic planning of hospital complexes. Masterplanning therefore becomes a fundamental task and must be informed by the following:

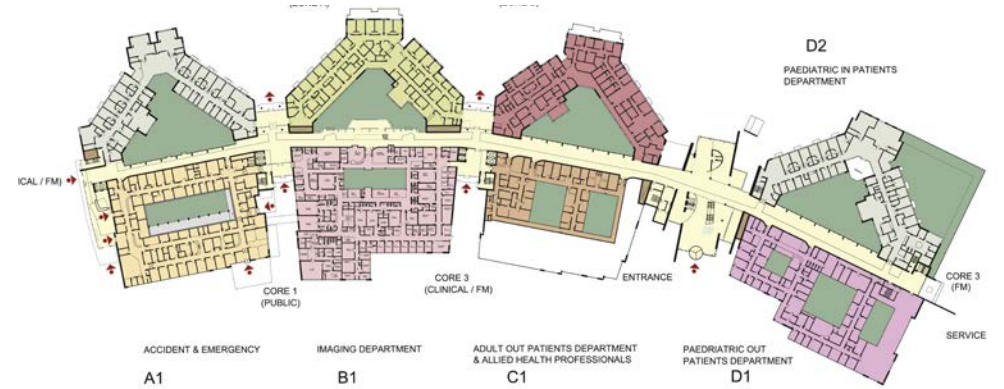
- The surroundings in terms of potential developments, links to transport, commercial activities and regeneration opportunities
- Best use of land
- Best use of site topography (sun paths, boundaries, views, landscape)
- Strategic infrastructure decisions (roads, engineering services underground, access) which minimise restrictions for future development
- Potential phased site developed and buildings reaching end of use
- Avoiding sterilising parts of the site now which could be used in future. The practice has successfully completed masterplans and estate development strategies for a number of health trusts throughout the UK and Ireland.



South West Acute Hospital, Enniskillen

The practice was appointed with local architects Hall Black Douglas and health planners Watkins Gray International, following a competitive interview process to prepare an exemplar design for a new £250m major acute hospital for the south west of Northern Ireland. With procurement proceeding under a PFI contract, this exemplar approach was introduced by the commissioning bodies both with a view to increasing design quality, whilst also reducing bidding costs.

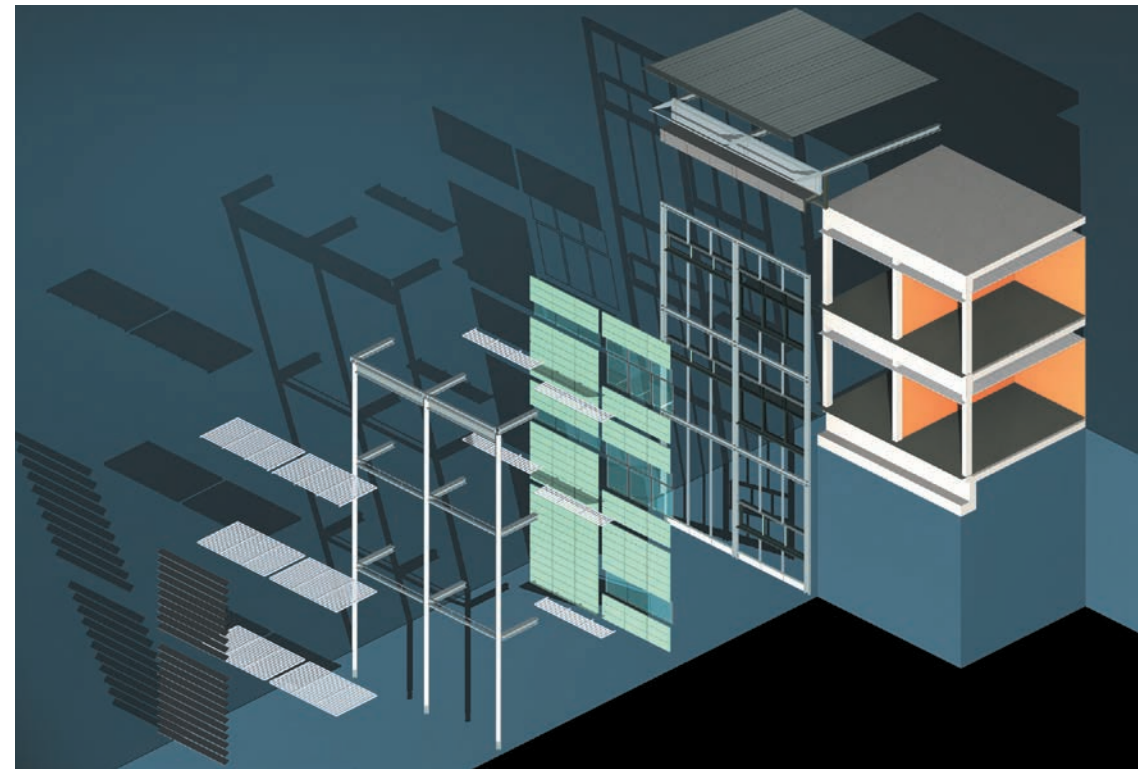
Approximately 60,000sqm the new hospital is located on the outskirts of Enniskillen Down on a sensitive green-field site over looking Lough Wolf. The project incorporates a full range of facilities required in a modern acute hospital. Full accident and emergency services, imaging, theatres, various ward and a host of out-patient facilities are included, designed to integrate into the countryside and benefit from the views to both the hills and lake. The design and procurement has proceeded through government review and PFI processes.



Ulster Hospital Re-cladding, Dundonald, Belfast

As well as Masterplanning our experience has included the reconfiguration and remodelling of existing healthcare buildings. we developed proposals for re-cladding and extending the existing buildings at the Ulster Hospital.

These designs formed part of the design guide for a series of buildings successfully delivered, including the Critical Care and Maternity buildings.



Development Control Plan Ulster Hospital

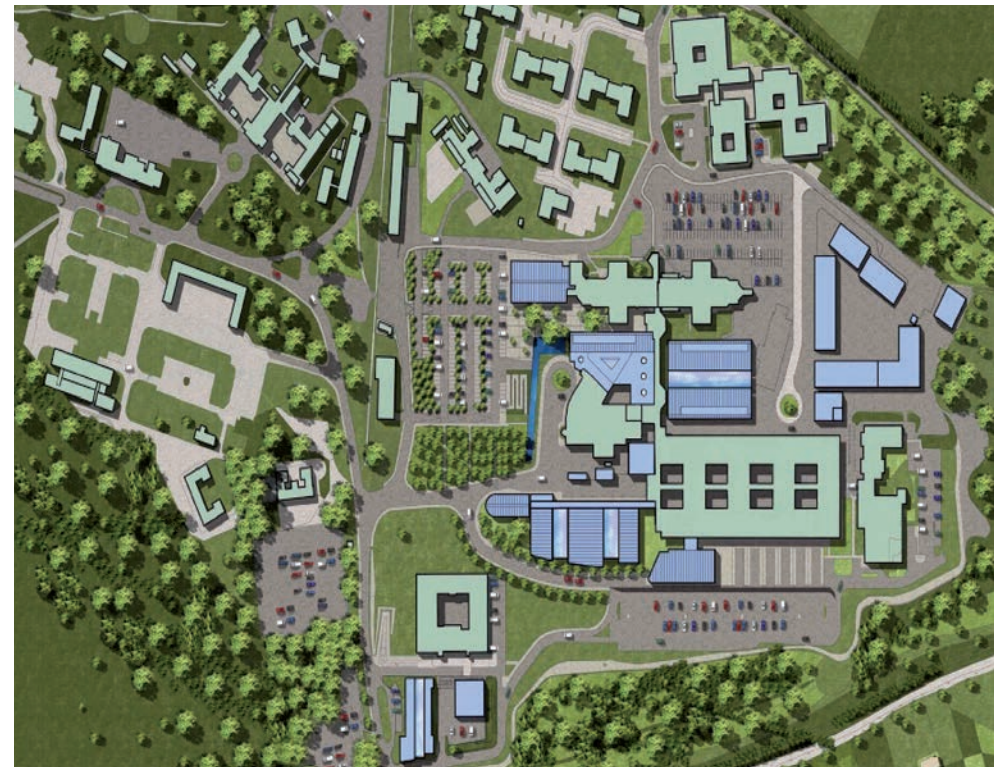
In March 2003, following informal discussions on the possible restrictions within the strategic development plan, Todd Architects were asked to carry out an analysis of the properties and sites within ownership of the Ulster Hospital and to co-ordinate the incorporation of all current development proposals into a strategic development plan.

A team of multi-disciplinary consultants, led by Todds, worked in partnership with the Trust and Health Estates to prepare a comprehensive design. The completed Development Control Plan was issued in July 2003, bringing together the needs and requirements of the Trust and acting as a framework for the design and construction of a coherent and efficient hospital. The first phase of redevelopment will be completed by 2010.



Ashford and St Peter's Hospital Masterplan

Todd Architects were appointed following competitive interview to assist the Trust in developing Development Control Plans for both the Ashford and St Peter's Hospitals sites, to permit the preparation of an outline Business Case to the SHA. The Trust had elected, following public consultation, to re-engineer the services provided on both sites, focussing acute and emergency care at St Peter's and elective surgery at Ashford. Our studies examined the phased development at St Peter's, creating a new integrated critical care facility (CCU, ITU and HDU) around existing A+E facilities; operating theatres, day procedures, central sterilising department and surgical wards in Phase 2, and through careful decanting of outdated buildings, the eventual creation of a new Mother and Child Centre.



Contact

Offices

Belfast

2nd Floor, Titanic House
6 Queens Road, Belfast, BT3 9DT
T +44 (0) 28 9024 5587
F +44 (0) 28 9023 3363
E info@toddarch.co.uk

Dublin

11 Pembroke Lane
Dublin 2, D02 CX82
T +353 (0)1 6620 500
E admin@toddarch.ie

London

1st Floor, 2 Stephen Street,
Fitzrovia, London, W1T 1AN
T +44(0)20 3457 0976
E info@toddarch.co.uk

Directors

Paul Crowe

BA (Hons) DipArch RIBA MRIAI

Peter Minnis

BSc DipArch RIBA

Peter Moran

BSc (Hons) DipArch RIBA

Andrew Murray

BSc (Arch) BArch RIBA

Gary McConville

BSc (Hons) BArch MRIAI RIBA