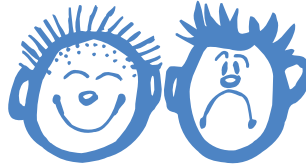


Max Planck Child Study Centre Information Booklet



The Max Planck Child Study Centre



The Child Study Centre is coordinated by Dr Claire Noble and Mrs Mickie Glover, Research Secretary attached to the Centre. Along with the centre's Research Assistant and a small group of PhD students, we conduct studies looking at children's early communicative development and the development of grammar. The studies normally involve describing a story book or playing games with novel words for new actions or objects to see how the children use and combine these words.

The Child Study Centre is directed by Professors Elena Lieven and Michael Tomasello. Both researchers are based at the Max Planck Institute for Evolutionary Anthropology in Leipzig, Germany.

Our building at the University of Manchester



The Max Planck Research Foundation

The Max Planck Society, a research foundation supported by the German government, funds the Child Study Centre with support from the School of Psychological Sciences at the University of Manchester. The Centre is part of the Max Planck Institute for Evolutionary Anthropology in Leipzig which was opened in 1998. The Institute currently has five departments (Comparative & Developmental Psychology, Linguistics, Primatology, Evolutionary Genetics and Human Evolution) and other research centres are attached to them, e.g. in Africa, to study primate behaviour in the wild, and at the Leipzig Zoo, which has a purpose built primate centre.

Our website:

<http://www.manchester.ac.uk/psych-sci/childstudy>

Leipzig website: <http://www.eva.mpg.de/psycho/index.html>

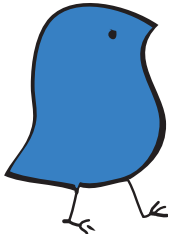
The Max Planck Institute for Evolutionary Anthropology



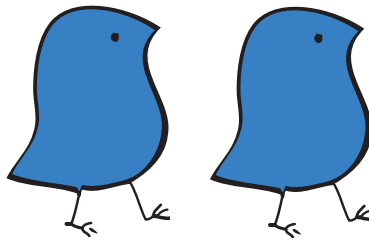
An Example Study

When we hear children say things like 'I goed home' we know that they have picked up on some of the regularities of their language and put them to creative use - it is unlikely that they often hear the word 'goed' but they can use it on the basis of a pattern they do hear very often: adding '-ed' to a verb to make a past tense.

A clear demonstration of this creativity is seen when children are shown a funny puppet bird called a 'wug'. If children see two of these puppets and spontaneously called them 'wugs' then we know they can creatively add '-s' to nouns to talk about several objects.



One wug



Two?

Our studies often use naming games and novel toys to investigate how and when children begin to use different words and sentences in a creative manner.

What will happen if I join the volunteer list?

To carry out child language research we rely on the help of hundreds of parents and children who are on our volunteer list.

If you join the volunteer list you are not, at this stage, agreeing to take part in a study. You are simply agreeing to be contacted about future studies. We will need some basic information for the volunteer list such as your child's date of birth. These details help us to contact the right parents at the right time. For example, in a particular study we may only need 2-year-old monolinguals. All your details will remain confidential and won't be shared with any third party.

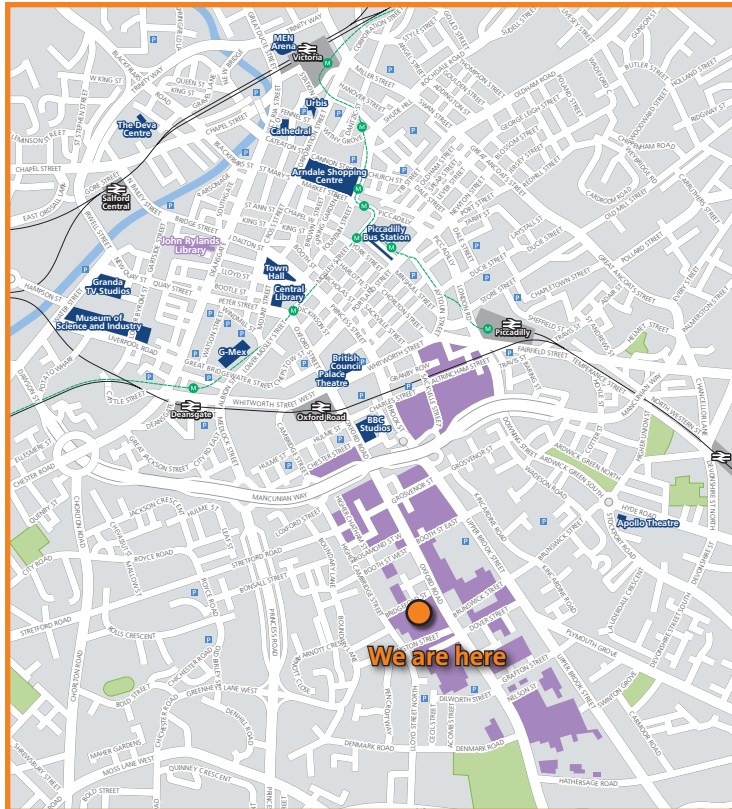
What happens once I'm on the volunteer list?

Once we have received your information the details will be included in our volunteer database. When a suitable study comes up, we will write to you about it, letting you know when it will be running. If you would like to participate, you would simply ring in to arrange a visit time that is convenient for you. If not, you don't need to do anything. Depending on the age of your child and on which studies we are running we may write to you about a study very quickly or in a few months. Most studies will involve one visit to the Centre lasting around half an hour.

What should I do now?

If you have not yet sent in your details please fill in the form at the back of this booklet and return it to us at the FREEPOST address listed. It's never too early to add your child! Any child from new born to 7 years can join the database. Otherwise, please feel free to pass the form at the back to anyone who might be interested! If you think your school, nursery or playgroup would be happy for us to visit them then please ask them to get in contact.

How to find us



The centre is located on Coupland Street on the main university campus. Why not extend your visit and take a trip next door to the Manchester Museum or down the road to the Manchester Aquatic Centre? We will pay for the first three hours of your parking in the multi-storey car park – just ask when you book in!

When you are coming in for a study we can send you maps and directions of how to find us. This information can also be seen on our website:

<http://www.manchester.ac.uk/psych-sci/childstudy>

A travel allowance will be provided and parking can be arranged.

If you would like to join the volunteer list please fill in your details below and return it to us at the free post address which can be found on the back page.

Thank you!

Your name: _____

Your telephone number: _____

Your address: _____

_____ Postcode: _____

Number of children: _____

1st child Child's name: _____

Child's date of birth: _____ Gender: M/F

Is your child:

- Bi-lingual? Y/N
- Seeing a Speech and Language Therapist? Y/N
- Known to have any other disability or developmental delay?

Please specify _____

2nd child Child's name: _____

Child's date of birth: _____ Gender: M/F

Is your child:

- Bi-lingual? Y/N
- Seeing a Speech and Language Therapist? Y/N
- Known to have any other disability or developmental delay?

Please specify _____

If you need to add another child please simply include the same information on an addition sheet and send it in with this form.

Thank you!



Please return the form to the FREEPOST address:

Max Planck Child Study Centre
School of Psychological Sciences
The University of Manchester
Coupland 1 Building
FREEPOST (MR 7976)
Manchester M13 9PL

Contact Details:

Max Planck Child Study Centre
School of Psychological Sciences
The University of Manchester
Coupland 1 Building
Oxford Road
Manchester M13 9PL

Tel: 0161 275 2444

Secretary email: mickie.glover@manchester.ac.uk

Co-ordinator email: claire.noble@manchester.ac.uk

<http://www.manchester.ac.uk/psych-sci/childstudy>

