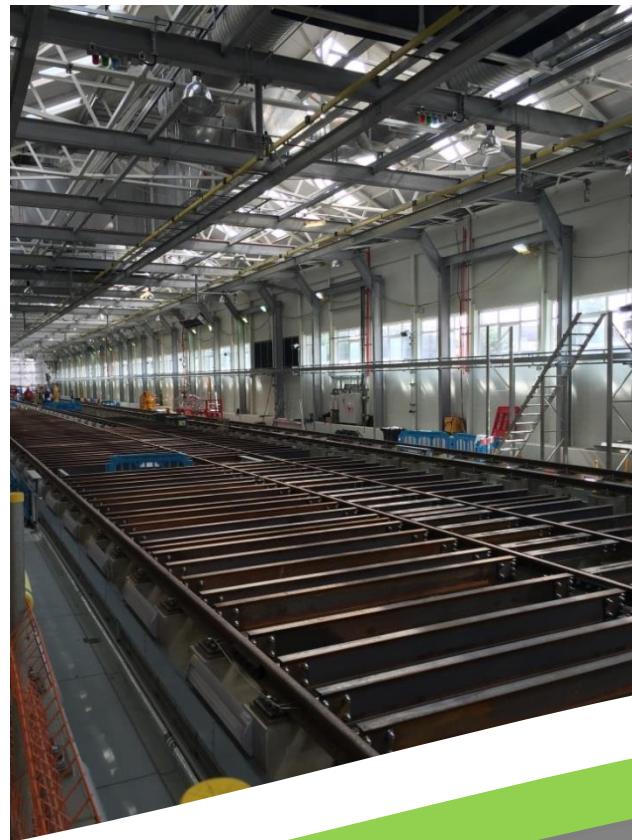
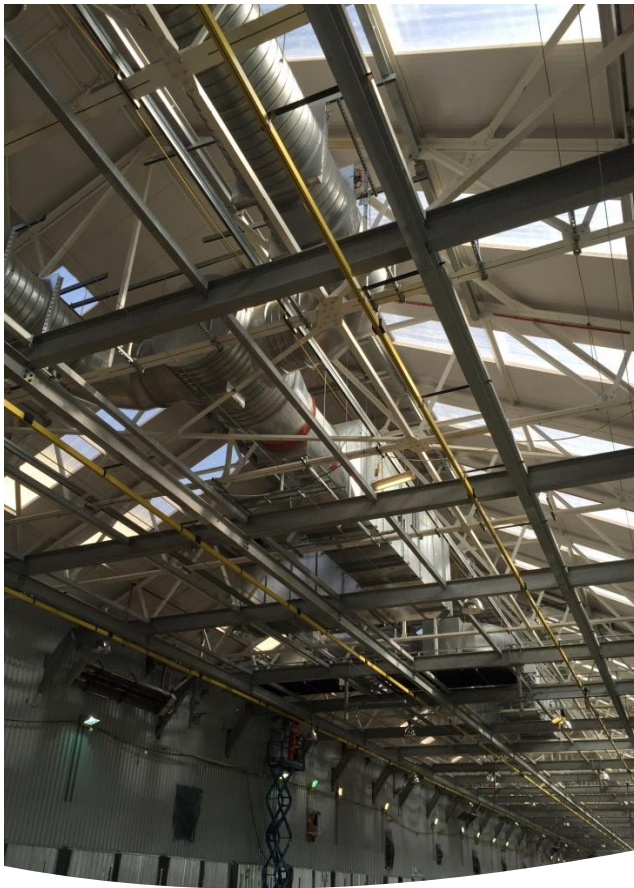


Ilford Train Depot, London

In association with:



VolkerFitzpatrick



Constant Air Systems Ltd supplied and installed the diesel fume extract system to the live Cross Rail train depot at Ilford, London.

The installation consisted of two individual extract systems located at high level in between the existing steel work.

Each system consisted of an extract fan complete with silencers, fire rated ductwork and two 4m x 2m extract canopies.

The installation also consisted of the supply and installation of eleven Ambirad heaters located at high level.

The total contract value was circa £150,000

Constant Air Systems Limited
Unit L Castle Estate, Turnpike Way,
Cressex Business Park, High Wycombe, Bucks, HP12 3TF
T: 01494 469529 F: 01494 469549
E: simon.james@constantair.co.uk www.constantair.co.uk