

DIAMONDMODULE
UNIVERSAL UNIT SYSTEM



HOTELS

DIAMONDMODULE





DIAMOND MODULE

innovative technological solutions based on the modular system

Our methodology is completely different from the conventional construction methods. A hotel built twice as fast compared to traditional building methods? Of course. We can do it! We are specialists in this field.

We are the company that focuses on innovative solutions and the latest technologies, which make our products highly energy efficient and environment-friendly. In our offer you can find houses, hotels, office buildings, nursery schools, health care facilities and other mixed-use buildings.

Under the same roof we have the design team, the research and development section, production and assembly lines. This allows us to control the entire production process from the first idea to the product completion.

We are providing the turn-key solution perfected to the smallest detail.



modern technologies

The high energy efficiency of our buildings means that we greatly reduce the amount of energy needed for heating, cooling, ventilation and air conditioning. This is achieved by the selection of modern materials and innovative solutions.

Air conditioning and heat recovery are necessary elements in a modern buildings. Standard ventilation results in high thermal losses through the continuous removal of warm air. We are providing the recuperator system that uses heated air from the inside in order to warm the fresh air from the outside. This solution ensures air exchange while saving energy.

Alternative energy sources are both ecological and energy reducing. We offer the selection of photovoltaic cells and wind turbines. The hybrid of these two systems is also possible.

Thermal insulation and hydro insulation using modern building materials. For the isolation purposes, we use the polyurethane foam (PUR). This material has an enhanced energy efficiency factor. The foam is applied using the spraying method, so that it fills all the gaps thoroughly. In addition, we cover each module with a coating of closed cell rigid polyurethane foam on the outside. It creates a uniform hydro insulating coating and an additional thermal insulation layer. The external walls are filled with a hybrid of open and closed-cell foam. Such a hybrid solution provides both thermal and acoustic comfort.

this is why we're different

We build 50% faster. We specialize in the production of hotels, which are manufactured entirely in the controlled environment of our modern factory. The prefabricated modules are transported to the destination and assembled twice as fast as compared to traditional building methods.

The shortened investment process is made possible by the fact that the building is created on a modern production line. We are completely independent of the weather conditions and the production takes place with the help of specialized machinery and equipment, not available on a regular construction site. This is why the construction of our building is several times faster, the precision and the quality of work is excellent.

Fully furnished interiors. You will find fully furnished hotel units, reception, bar, lounge, restaurant, toilets and other common areas. All the lighting fixtures and the necessary facilities are included. This is how we redefine the meaning of the “turn-key” solution.

Approved technologies and renowned manufacturers are our way to achieve high quality and compatibility with the best standards in the field of thermal insulation, acoustic insulation and fire protection. We use only materials certified for buildings – with the parameters exceeding those commonly used.

STANDARDS



FURNISHED ROOMS



EQUIPPED BATHROOMS



KEY CARD LOCKS



LED TV IN THE ROOM



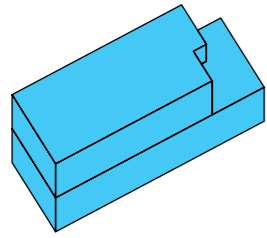
LED LIGHTING



AIR CONDITIONING

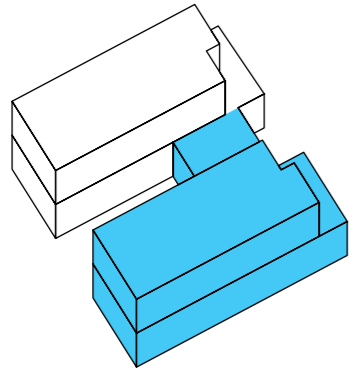


Superior quality of furniture and fittings. Our standard includes the complete furnishing and equipment. We use top brands and manufacturers. Our team designs from sketch to detail. We are exclusively interested in the highest standard.



hotel 29

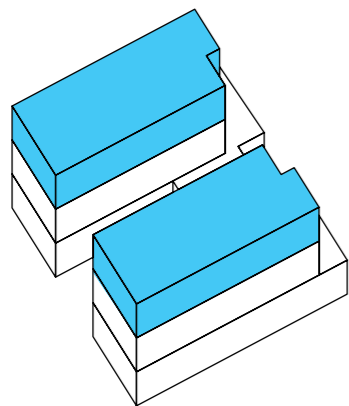
Hotel 29 is the base size of the facility which allows to building a small plot. We limited the common area to a necessary minimum: a reception and a small self-service breakfast area with Grab & Go vending machines. It is possible to enlarge this area in order to obtain a standard restaurant with a kitchen. The layout of the building allows for easy subsequent expansion of the hotel. The proposed option is a two-storey building with the possibility of an adding a third floor.



hotel 58

This option doubles the basic Hotel 29 variant. The two twin buildings are connected by a common space planned as a restaurant, bar and lounge area. This variant includes two floors and provides the same possibility of expansion as Hotel 29, by adding hotel units (lengthening of the building).

This variant of the building is well suited for two-stage construction planning. In the first stage a fully functioning facility is built. This allows completing the remaining part in any time without interrupting the functioning of the hotel built in the first stage.

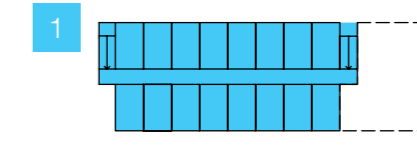
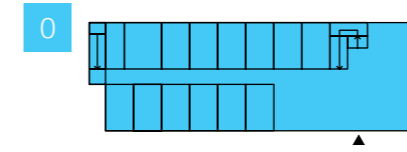


hotel 90

In this facility we show how you can easily scale the size of a building. In this case, we enlarge the Hotel 58 by adding a third floor. Such a superstructure can also be an option to expand a two-storey building provided that the appropriate foundations were built at the first stage.

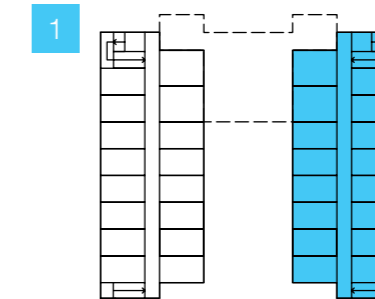
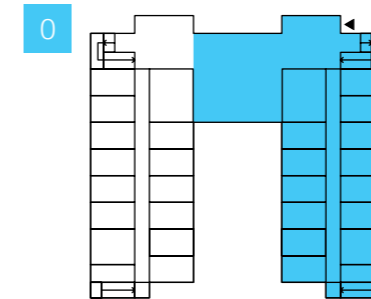
While extending the building upwards, we can add external elevators for accessing the upper floors.

hotel 29

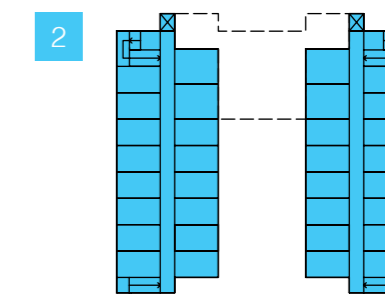
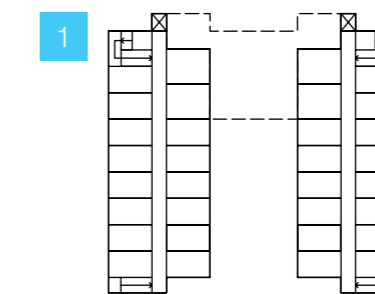
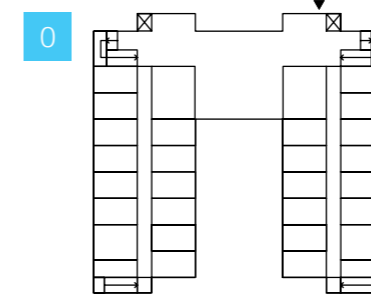


Our modular technology allows us to customize the size and function of the facility to specific needs from large facilities to the small ones that can be build on minimal plots. The layout of the building allows for easy subsequent addition of hotel unit modules and the possibility to build up to three floors.

hotel 58

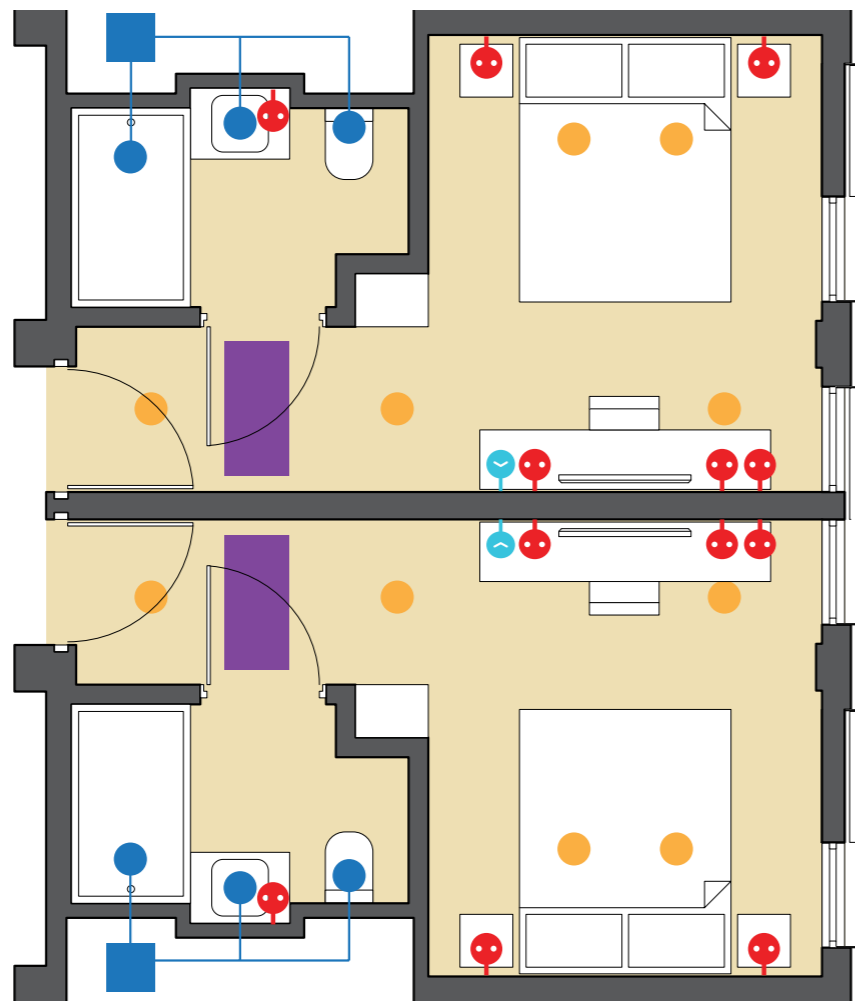


hotel 90



HOTEL ROOM

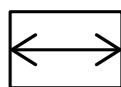
- AIR**
conditioning
- TV**
socket
- 220V**
socket
- LED**
lighting
- WATER**
hot/cold



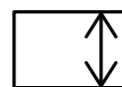
DIAMONDMODULE



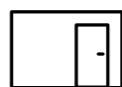
44,0m
length



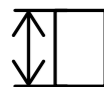
14,5m
width



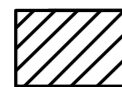
29x
hotel units



6,5m
height



1020m²
area

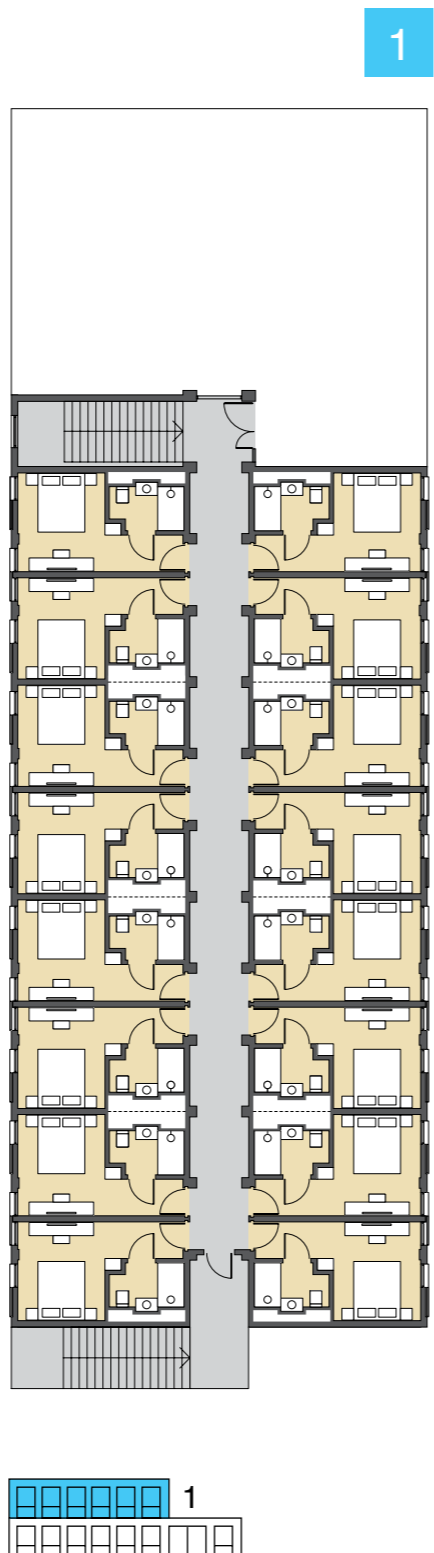
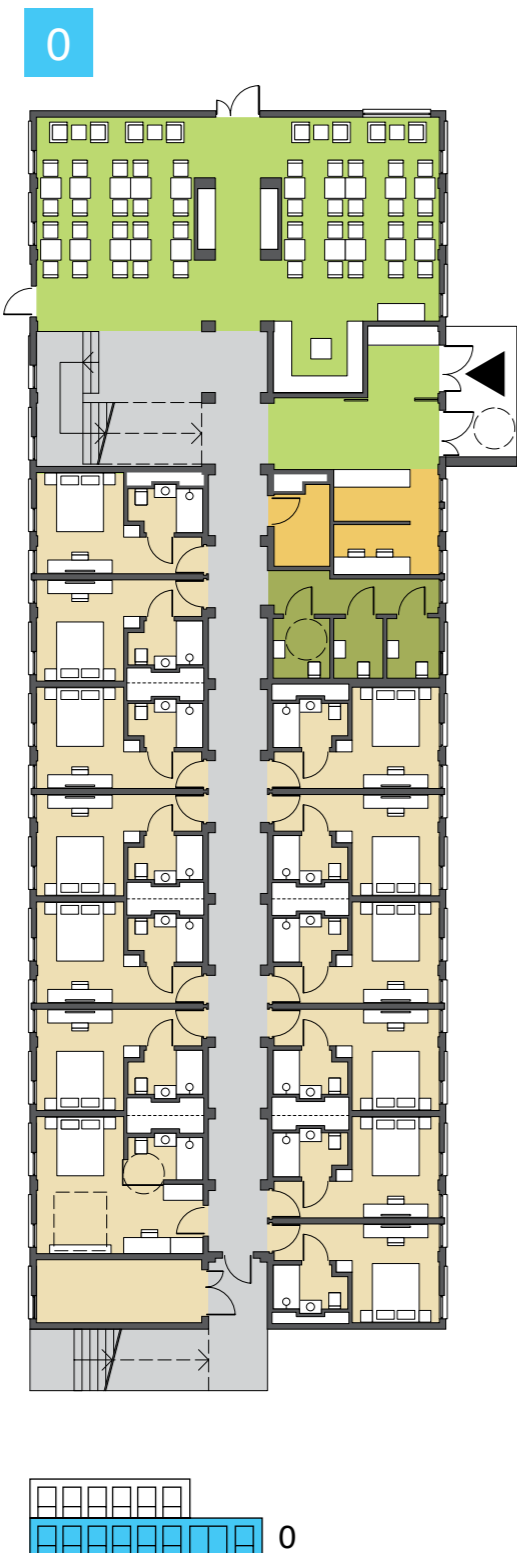


60x
guests



HOTEL 29

29x hotel units	60x guests
44,0m length	14,5m width
6,5m height	1020m ² area



DIAMONDMODULE





HOTEL 29

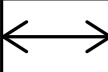


restaurant
bar
café
drinks

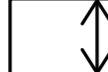
hotel



40,5m
length



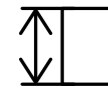
39,0m
width



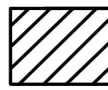
58x
hotel units



6,5m
height



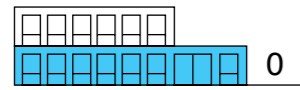
2090m²
area



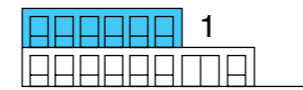
128x
guests



HOTEL 58



0



1

58x
hotel units

128x
guests

40,5m
length

39,0m
width

6,5m
height

2090m²
area

HOTEL 58

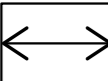




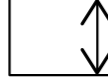




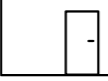
40,5m
length



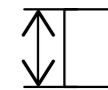
39,0m
width



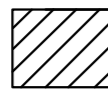
90x
hotel units



9,5m
height



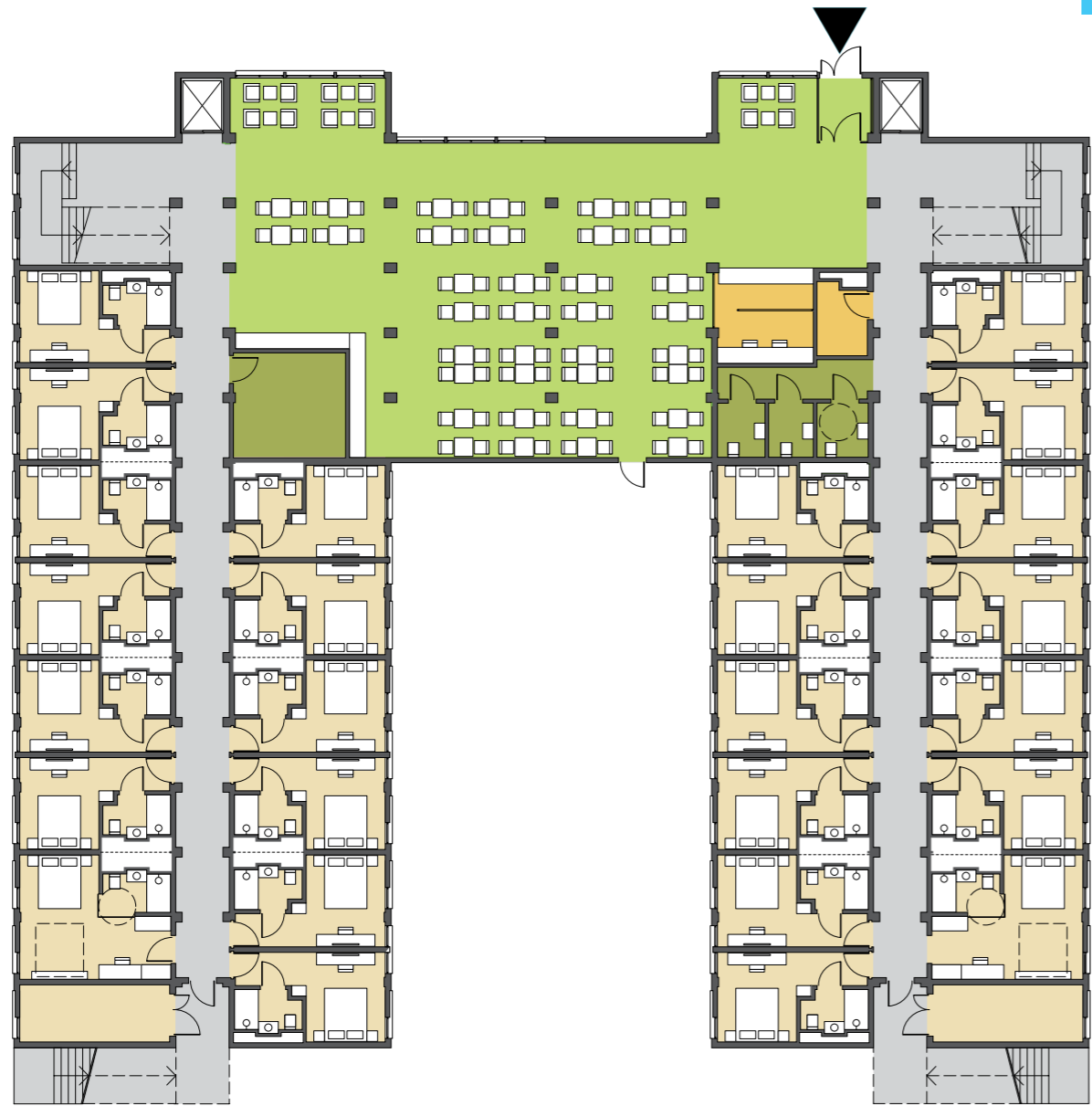
3027m²
area



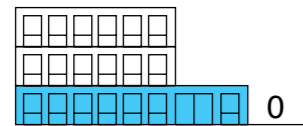
200x
guests



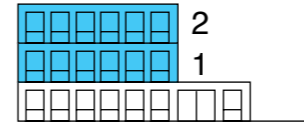
HOTEL 90



0



1 2



90x
hotel units

200x
guests

40,5m
length

39,0m
width

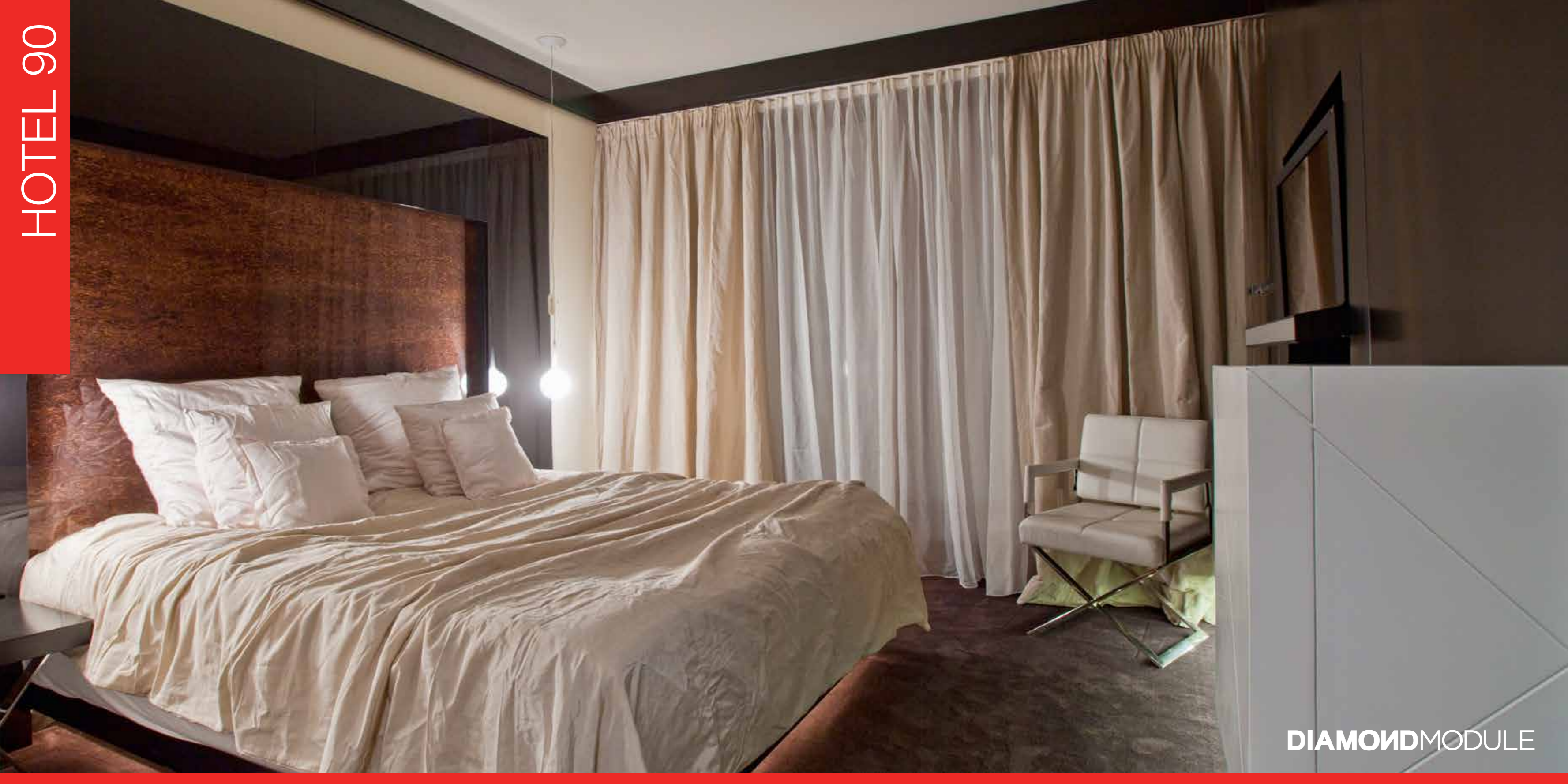
9,5m
height

3027m²
area

HOTEL 90



DIAMONDMODULE





REALIZATIONS



DIAMONDMODULE

REALIZATIONS



DIAMONDMODULE

TECHNOLOGY



TECHNOLOGY



#01



#02



#03



#04



#05



#06



#07



#08



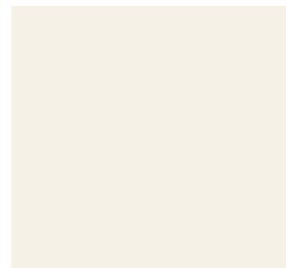
#09



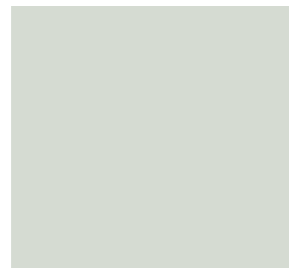
#10



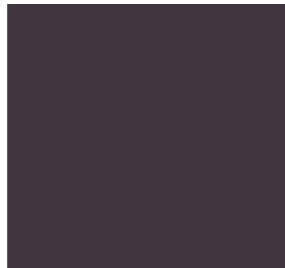
#11



#12



#13



#14



#15



#16

facade panels

Wide range of designs and colors allows you to freely modify the appearance of the building – from the natural patterns of wood, vibrant colors to digital print with any motif.

Characteristics of the panels:

- cleaning or maintenance free
- scratch resistant
- atmospheric factors and UV rays resistant
- impact and solvents resistant
- fully washable (graffiti is easily removable)
- long-lasting, vibrant, non-fading colors





#01



#02



#03



#04



#05



#06



#07



#08



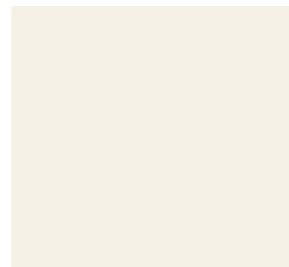
#09



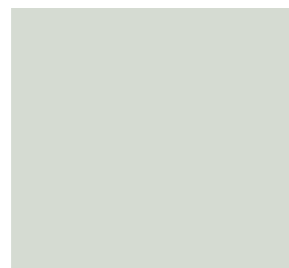
#10



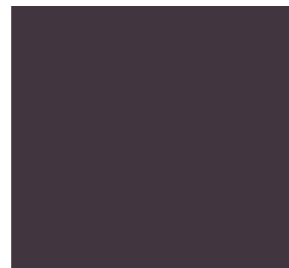
#11



#12



#13



#14



#15



#16

wall finishes

We offer high quality MDF-board panels as the interior wall finishes. They can be covered with wood veneer, laminate, foil or lacquered. The advantage of this technology is the exceptional durability and high aesthetic values.

The panels are a good acoustic and thermal insulator. They are fire retardant. They do not require maintenance, and can be cleaned with water with the addition of the regular washing agents.

The technology allows for easy replacement of any damaged elements. The panels can be changed to a different color or pattern when desired.





#01



#02



#03



#04



#05



#06



#07



#08



#9



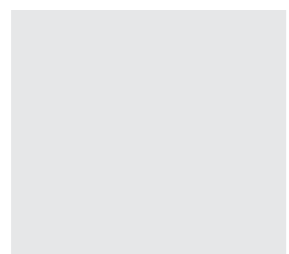
#10



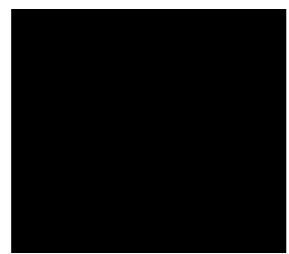
#11



#12



#13



#14



#15



#16

laminated floors

We offer the highest quality laminated floors from RESOPAL.

Main advantages :

- waterproof
- high-abrasion resistance class
- covered with a protective layer formed on the basis of corundum (sapphire)
- solid waterproof connection system
- covered with HPL laminate
- wide range of colors and patterns
- guarantee of wear resistance for the most heavy duty surfaces



Full selection of materials at www.diamondmodule.com



alternative sources of energy

Our buildings have the option of using alternative energy sources. This kind of technology decreases significantly the electricity demand. We offer photovoltaic cells, wind turbines or a hybrid system.

Photovoltaic cells

- PV module with a 2,0mm glass
- solar glass with nano anti-reflective coating
- glass with a low iron content allows for a 98% transmission of light
- use of glass as the back layer of the panel
- elimination of the panel frame and a laminate with Tedlar
- tightness of the panel and the protection of the glass edge achieved through the use of butyl rubber
- durability of the panel is 40 years – almost two times more than the traditional one

Properties of the cells:

- high output power 279W for a panel with 60 cells
- 335W for a panel with 72 cells
- high efficiency
- energy efficiency of the entire module close to the efficiency of the cells – low losses in the production process
- extremely thin cells reducing the consumption of silicon in the production

Wind turbine with a vertical rotation axis

- wind turbine with a vertical axis (VAWT)
- unique and patented shape of of the composite rotor
- silent operation at maximum speed
- aesthetic look harmoniously blending in the surroundings
- low requirements for the speed of wind
- equal work irrespective of the direction of wind
- low weight and size allows for easy and fast installation

The hybrid system

The combination of solar energy and wind power (the so-called hybrid system) provides many benefits. Energy produced by the PV panel has different daily and annual fluctuations than the energy produced by the wind turbine.

These systems can complement each other very well increasing the independence from the changing weather conditions.

Building both systems at the same time is cheaper than installing them separately.

FURNITURE



furniture

Our offer includes furniture made from high quality materials while using modern technology. We put the emphasis primarily on the quality and design of the offered products. Our attention is paid not only to the appearance of the product but also to its ergonomics.

We offer classical and modern collections created in collaboration with young and talented designers.

Each piece of furniture is designed to be a part of a furniture collection. This ensures the coherent character of the interior regardless of its size. We produce furniture for large facilities, hotels and restaurants as well as for individual customers who want to arrange their houses with style.

We design, produce and test prototypes of our furniture. This allows us to control the entire process of creating the collection and ensures the highest quality of the target product.

We guarantee the continuity of supplies, stable assortment and a 3-year guarantee for our furniture.

More information at
www.diamondmodule.com

DiamondModule
e-mail: contact@diamondmodule.info
www.diamondmodule.info

