

# Advancing the Efficiency of Ocean Commerce with Artificial Intelligence

Powered by DanelecConnect

**Nautilus Labs** is partnering with Danelec to decrease the time, effort, and costs associated with vessel installations, IoT & data integrations, and uptime for high frequency data.

Nautilus connects Danelec clients with continuous, cost-saving fleet optimization insights—at sea and on shore. Owners, operators, charterers, and technical teams can access historical data and predictive analytics to help make better decisions for every vessel and voyage, reduce fuel consumption, and adhere to charter party agreements—all in real time.

Cut costs, cut emissions, and maximize returns—while driving cross-team collaboration, greater transparency, and stronger accountability for your shipping company, shareholders, and the planet we all share.

## A Single View for All Vessels

With **Nautilus Platform**, see and compare which vessels need attention—now or in the future—with a single, customizable view. Allocate the right resources at the right time, determine optimal dry docking or other maintenance events, and understand added resistance or performance degradation—through user-friendly visualizations, historical data, and predictive analyses.

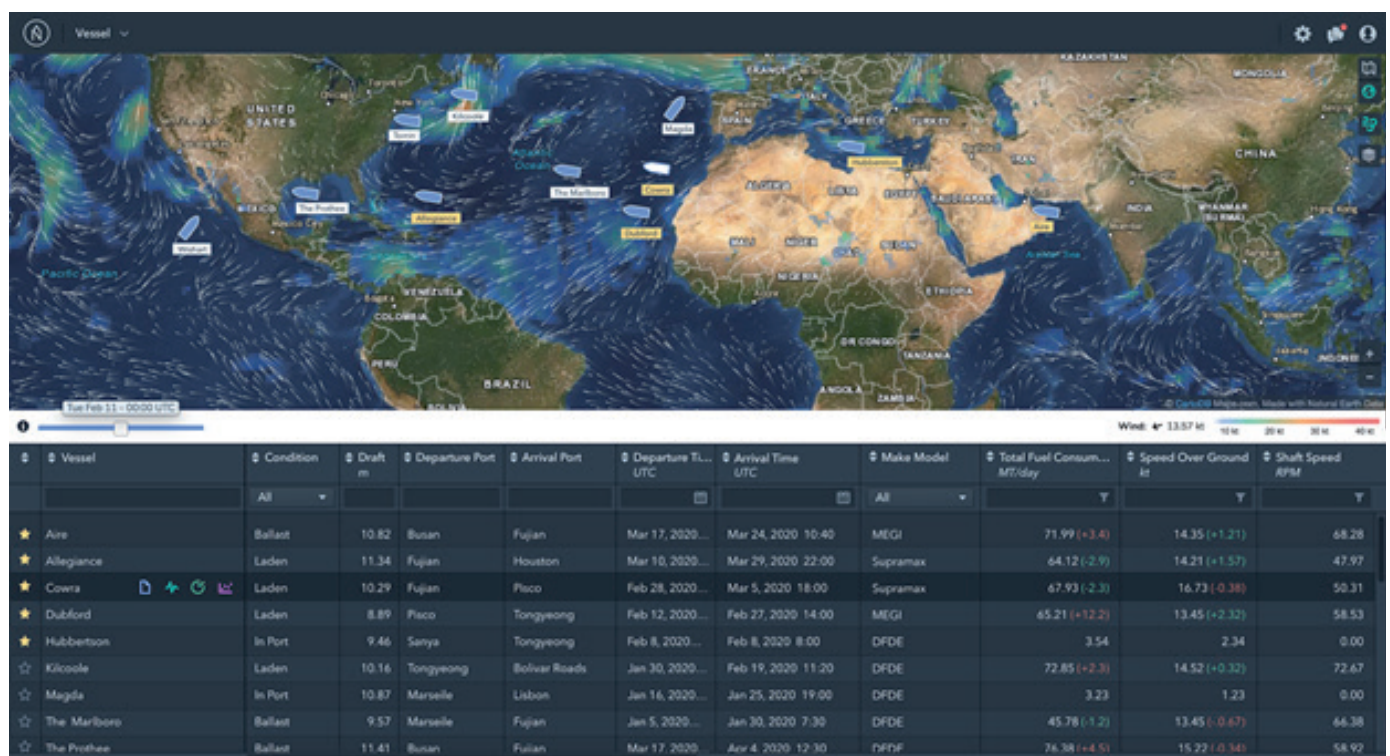
## Real-Time TCE/ETA Optimization


Each voyage, operators and masters must make an array of decisions that affect port arrival times. And these decisions are heavily dependent on changes in weather, routing, and fuel quality. With **Nautilus Platform**, see performance changes in real time and receive recommendations to help avoid commercial penalties, maximize fuel efficiency, and fulfil your charter party agreements.

## Predictive Vessel Performance


Every vessel is unique and the age, wear, routing, and maintenance of individual vessels can vastly alter performance over time. As a result, the performance of sister ships can differ by up to 17% in a given year.

But to understand the unique capability of each vessel and their impact, you need more than manual, noon data (an error-prone, one-way window into the past). **Nautilus Platform** combines artificial intelligence with sensor data, environmental data, as well as physical factors unique to each ship—to predict how that vessel will perform in any weather or draft condition—for more accurate, real-time S&C curves, historical performance trends, and vessel marketing.







**Optimize every leg and voyage for TCE, ETA, or charter party agreements**




**Manage and triage your entire fleet with a single view for all vessels**



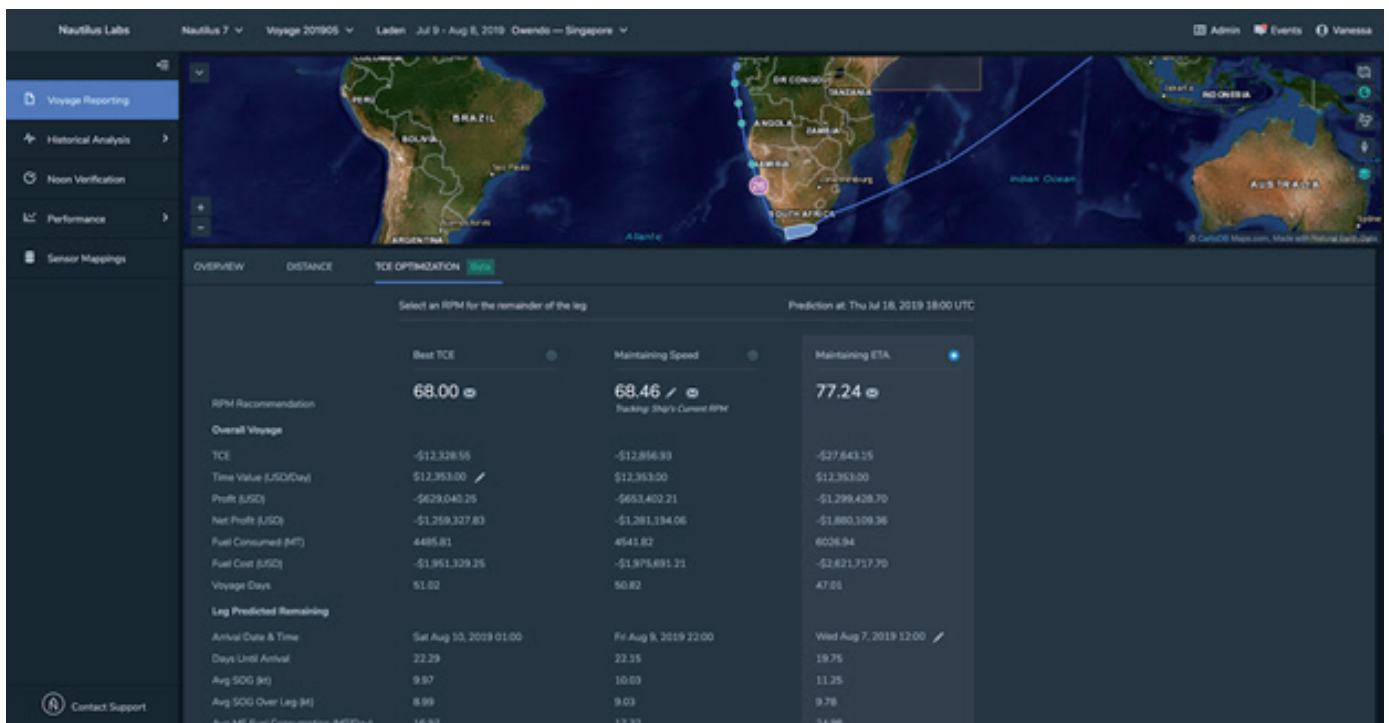
**Maintain vessels with historical comparisons and predictive analytics**



**Create customized alerts, views, rankings, and reports**



**Market each vessel with increased data transparency, stronger vessel yield, and performance modeling**



**Danelec’s ship-2-shore data solutions** are powered by the connectivity Hardware modules which pick up analog, digital or serial sensor data throughout the ship for onboard data collection, and connect it to the vessel’s existing network and communication infrastructure for data transfer to shore.

The data for the service is collected from various systems, such as onboard flow meters, torque/thrust meters, automation systems, and navigation systems or meteorological services.

**Nautilus Labs** is advancing the efficiency of ocean commerce through artificial intelligence. The firm is trusted by clients across the globe to help make better, real-time decisions that ultimately unlock transformative outcomes—at sea and on shore. By partnering with Nautilus, owner/operators can maximize returns for every vessel and voyage.

For more information, go to [www.nautiluslabs.co](http://www.nautiluslabs.co) or email [info@nautiluslabs.co](mailto:info@nautiluslabs.co).