

# **ESTEAM CLEANING SYSTEMS**

## **E1200 MANUAL**

### **OWNER'S MANUAL**

Congratulations on your selection of a new E1200 hard surface and soil extractor built in Canada by “Esteam Cleaning Systems.” Our goal has been to produce the best high performance line of cleaning equipment on the market today. Reading your owners manual will help to achieve maximum benefit from your purchase.

VERSION 01 (SEPT,08,2006)  
**(760-165)**

# TABLE OF CONTENTS

	Page No.
Introduction on the E1200	2
Specifications	2
Maintenance	3
Safety Information	3
Operating Instructions	4
Trouble Shooting	7
Schematic	10
Warranty Registration	16
Warranty	17

# INTRODUCTION

Only the highest quality components go into our equipment to deliver you strength and reliability in a long life, high performance machine. The E1200's housing is made of high impact, unbreakable polyethylene. We are so confident in the housing that we put a limited lifetime warranty on this unit.

The E1200 incorporates a unique dual 2 stage vacuum system. Two 2 stage vacuum motors hooked up in sequence produce 150 inches of water lift. To compliment the vacuum lift the E1200 comes standard with a Rule industrial pump which disposes up to 2800 gallons per hour under vacuum.

The E1200 is a dual purpose machine that can be utilized for hard surface cleaning or carpet cleaning.

The E1200's clean water solution tank and dirty water recovery tank are both 40 litre capacity. The recovery tank is equipped with an automatic high water shut off, which stops the vacuums from extracting when the tank is full.

## SPECIFICATIONS E1200 (110v)

<b>ELECTRICAL</b> Amps Volts	Two cords 14 amps 115 volts
<b>VACUUM MOTOR</b> Cfm's Vacuum lift	2 - 2 stage vac 94 150"
<b>PUMP OUT</b> <b>(RULE 2800 )</b>	2800 GPH 1.5 AMP
<b>SOLUTION PUMP</b> Pump Motor	1200 psi Plunger 1-1/2 HP A/C 1725 RPM
<b>INTERNAL HEATER</b>	N/A
<b>SOLUTION TANK</b> (Clean water)	10.5 gallons (40 litres)
<b>RECOVERY TANK</b>	10.5 gallons (40 litres)
<b>LENGHT</b>	26 inches (66 cm)
<b>WIDTH</b>	17 inches (43 cm)
<b>HEIGHT</b>	34 inches (86 cm)
<b>WEIGHT</b>	140 lbs (63.5 kgs)

## **MAINTENANCE**

### **DAILY:**

- Clean high water level float screen inside the recovery tank.
- Ensure high level float ball is working properly.
- Rinse out recovery tank after use.
- Clean dirt and obstructions from the (recovery tank) drain valve rubber gaskets to prevent premature wear.
- Rinse out pump with clean water at conclusion of work day.
- Clean poly housing with mild soap and water.
- Check machine fuse.

### **MONTHLY:**

- Clean air inlet and check exhaust port.
- Check to make sure cooling fan is operating properly.
- Check 1 ½ dump valve seals.

### **YEARLY:**

- We recommend that your unit be inspected by a qualified service technician once a year.

### **PREVENTATIVE MAINTENANCE:**

- Never store this unit in a place where there is a possibility of the temperature dropping below 0°C (32°F).

## **SAFETY INFORMATION**

1. Prior to inspection or repair of this machine, disconnect all electrical cords rendering the machine powerless. Failure to do so could result in serious or fatal injury.
2. Inspect unit daily for worn or damaged components. E.g. frayed cord, loose plug, or a plug with missing ground pin, etc.
3. This unit should only be operated when in an upright position on a level surface.
4. Do not operate unit unless it is properly grounded in a 3 pin grounded outlets. Never bend or remove ground pin from plugs.
5. Ensure filters and screens are free from lint or dirt.

6. Do not run unit if vacuum motor or pump are wet. Allow sufficient time for motor to dry before plugging unit in.
7. Do not use solvent based cleaning products in this extractor.
8. Keep air inlets and exhaust ports free from obstructions. Blocked air inlets or exhaust ports can cause the unit to overheat.
9. Do not use solution or recovery tanks for storing hoses, cords or accessories.
10. When using electrical equipment around water it is important to wear rubber soled shoes and keep machine properly grounded at all times. Failure to do so could result in a fatal electric shock.

## **OPERATING INSTRUCTIONS**

### Hard Surface Cleaning or Carpet Cleaning

1. Insert electrical cords into 3 pin grounded outlets.
2. We recommend the use of a liquid defoamer to prevent the machine from prematurely shutting off due to excess foam in the recovery tank. Turn on vacuum switch and pour approximately  $\frac{1}{4}$  cup of Esteam Liquid Defoamer into the end of the vacuum hose.
3. The E1200 is equipped with auto fill and drain. Simply attach the supplied hoses to a water supply and the pump out hose to a sanitary drain. You may also manually fill and drain the machine, especially for small amounts of cleaning.
4. Turn the pump out switch on, the pump will start sensing electronically for any water present in the recovery tank and then turn off. The pump will sense every 2 minutes thereafter for water to pump out.
5. If direct feeding fresh water, the float in the fresh water tank will automatically stop the water supply at a preset level and maintain that level thereafter.
6. The E1200 pump is adjustable from 400-1200 PSI. To adjust the pressure, turn the regulator (located on lower front of machine) clockwise to increase pressure and counter clockwise to decrease pressure.
7. Attach the prime hose to the quick connect on the E1200, inserting the other end into the vacuum barb cupping off the remainder with your hand. Turn on the pump switch and run for about 15 seconds. This will prime any air out off the pump and fittings.
8. Connect vacuum and solution hoses to the machine and then to the hard surface tool to be used.

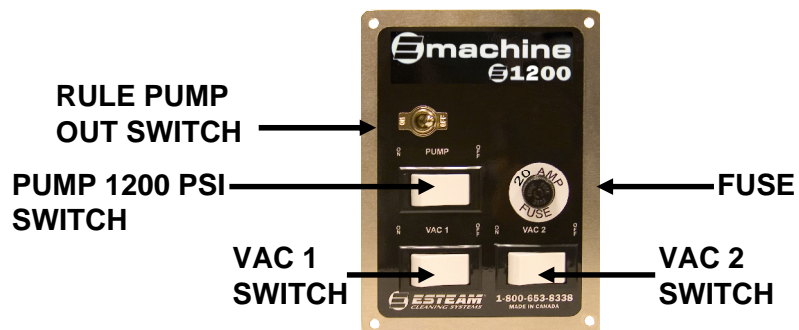
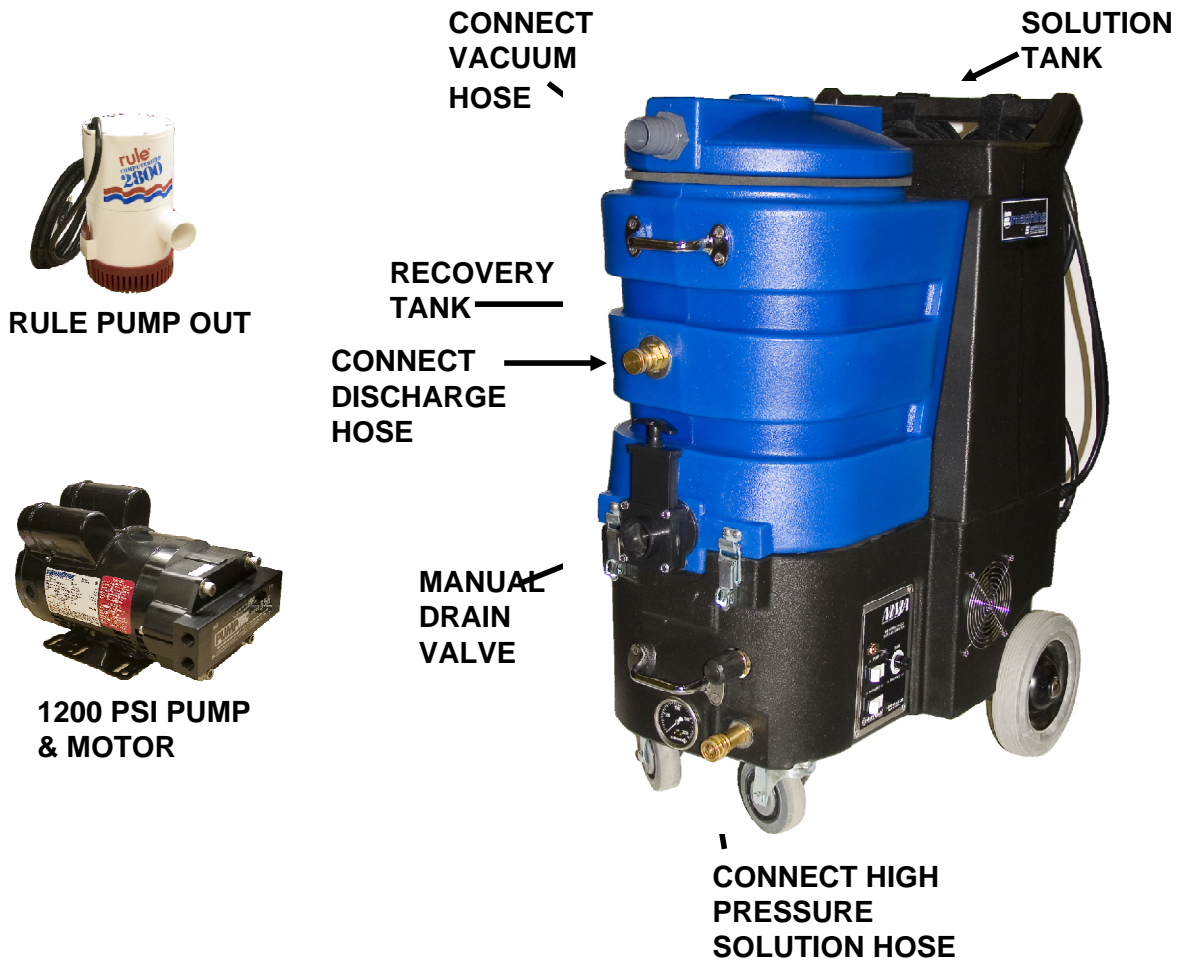
9. Turn on switches and proceed to clean.
10. When not using the Auto Fill or Drain features, when the recovery tank becomes full the vacuum motors will stop extracting. The vacuum motors make a distinctive high pitched noise as all the air flow will be cut off. At this time turn off all switches, then the recovery tank may be drained by pulling up the drain valve handle on the front of the machine and emptying the contents into a pail for disposal.

**NOTE:** Ensure that the high water level float screen inside the recovery tank is free from any obstructions. Be sure to close drain valve before resuming cleaning.

11. To empty solution tank remove vacuum hose from wand. Turn on vacuum switches and partially submerge end of hose into solution tank. Continue until all water has been removed from solution tank and transferred into recovery tank. Drain recovery tank.

**WARNING:** When using electrical equipment around water it is important to wear rubber soled shoes and keep machine properly grounded at all times. Failure to do so could result in electric shock.

# E1200 MODEL



# TROUBLE SHOOTING

**WARNING:** Prior to inspection or repair of this machine, disconnect all electrical cords rendering the machine powerless. Failure to do so could result in serious or fatal injury.

<b>PROBLEM</b>	<b>CAUSE</b>	<b>SOLUTION</b>
1. Entire unit will not operate	1. Unit not plugged in	1. Connect unit to 3 pin grounded outlets
	2. Blown fuse on machine	2. Check machine fuses and replace if necessary
	3. Blown fuse or breaker for plug in outlet	3. Check fuse panel for blown fuse
	4. Loose wiring	4. See dealer
2. 1200 PSI Plunger pump will not run	1. Switch not turned on	1. Turn on switch
	2. Broken switch	2. See dealer
	3. Loose wiring	3. See dealer
	4. Pump motor defective	4. See dealer
3. Vacuum will not run	1. Switch not turned on	1. Turn on switch
	2. Blown fuse	2. Replace fuse
	3. Broken switch	3. See dealer
	4. Loose wiring	4. See dealer
	5. Blocked motor	5. See dealer
4. 1200 PSI Plunger pump runs but does not pump solution	1. Out of solution	1. Fill solution tank with water
	2. Pump inlet screen plugged	2. Clean inlet screen
	3. Pump was not properly primed	3. Prime pump using priming hose
	4. Kink in solution hose	4. Remove kink
	5. Plugged jet or quick connect	5. Remove blockage
	6. Internal (inside machine) or external solution line damaged and leaking	6. See dealer



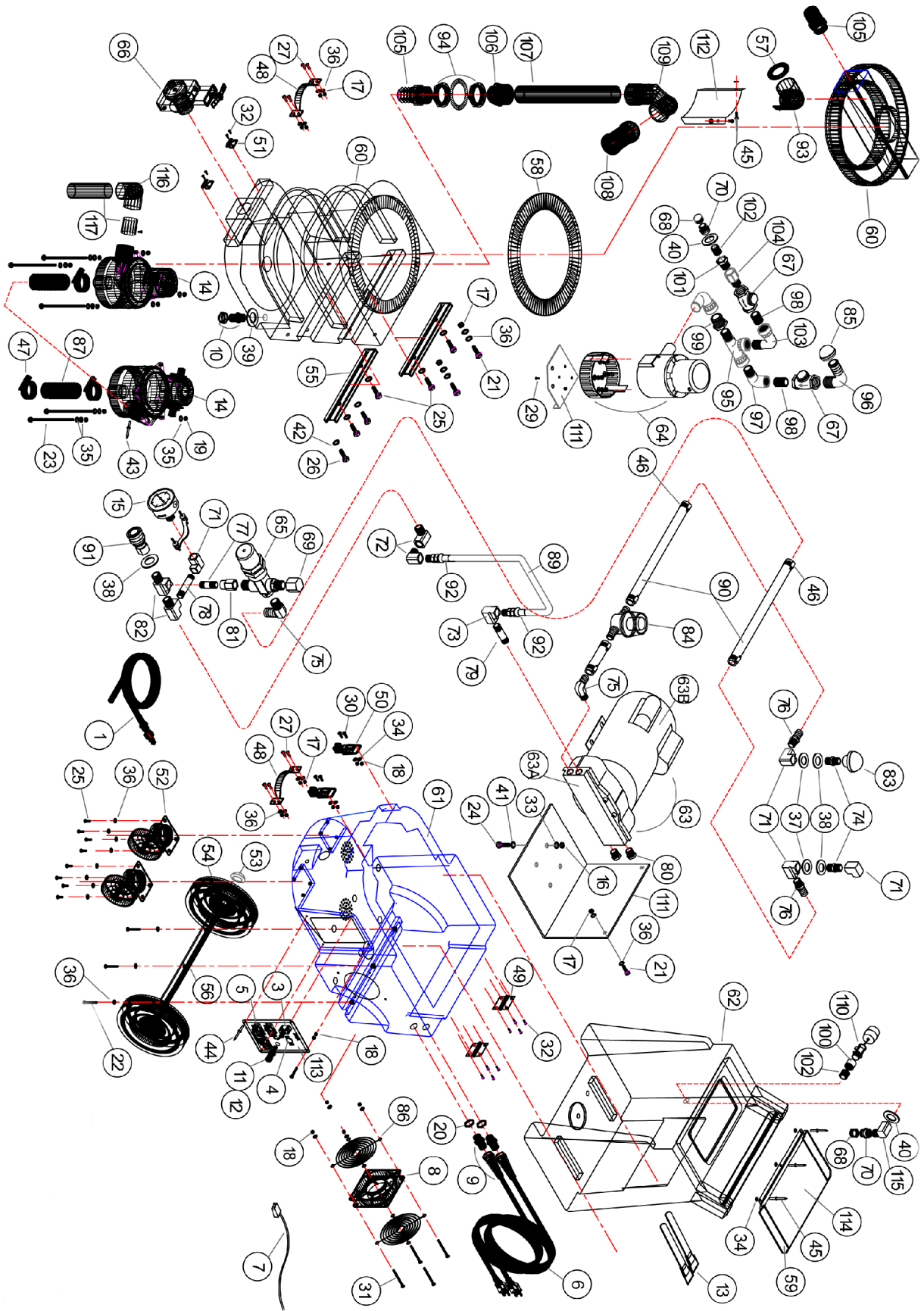
## TROUBLE SHOOTING (CONTINUED)

<b>PROBLEM</b>	<b>CAUSE</b>	<b>SOLUTION</b>
5. 1200 PSI Plunger pump runs but has loss of pressure	1. Pressure regulator valve out of adjustment	1. Adjust pressure using regulator located at the front of the machine
	2. Kink in solution hose	2. Remove kink
	3. Blockage in solution hose	3. Remove blockage
	4. Jet orifice opening on cleaning wand is too large	4. Total jet opening for 1200 PSI pump should be .03
	5. Pressure regulator valve components wearing out	5. See dealer
	6. Internal pump components wearing out	6. See dealer
6. Vacuum operates but has poor or no suction	1. Recovery tank full	1. Drain recovery tank
	2 Vacuum hose plugged	2. Locate and remove blockage
	3. Wand plugged	3. Locate and remove blockage
	4. Exhaust port blocked	4. Locate and remove blockage
	5. High level float stuck in off position	5. Turn vacuum off and tap top of float screen cage
	6. Front drain valve left open after draining recovery tank	6. Close recovery tank drain valve on front of machine
7. Vacuum prematurely stops extracting	1. Excess foam in recovery tank	1. Add defoamer to recovery tank
	2. Lint or dirt on automatic shut off float screen	2. Clean auto shut off float screen
	3. Defective float ball	3. Replace float screen cage

## TROUBLE SHOOTING (CONTINUED)

<b>PROBLEM</b>	<b>CAUSE</b>	<b>SOLUTION</b>
8. Machine spits water out of exhaust port	1. High level float not working properly	1. Check auto shut off float cage and ball for proper operation
9. Machine blowing excessive amounts of water out of exhaust ports	1. Damaged (leaking) recovery tank fittings	1. Immediately shut unit down. Bring unit to a dealer for service
10. Water accumulating in bottom electrical component area	1. Inside solution line leaking	1. Immediately shut unit down. Bring unit to a dealer for service
	2. Pump leaking	2. Immediately shut unit down. Bring unit to a dealer for service
	3. Solution or recovery tank leaking from above	3. Immediately shut unit down. Bring to a dealer for service

# E1200



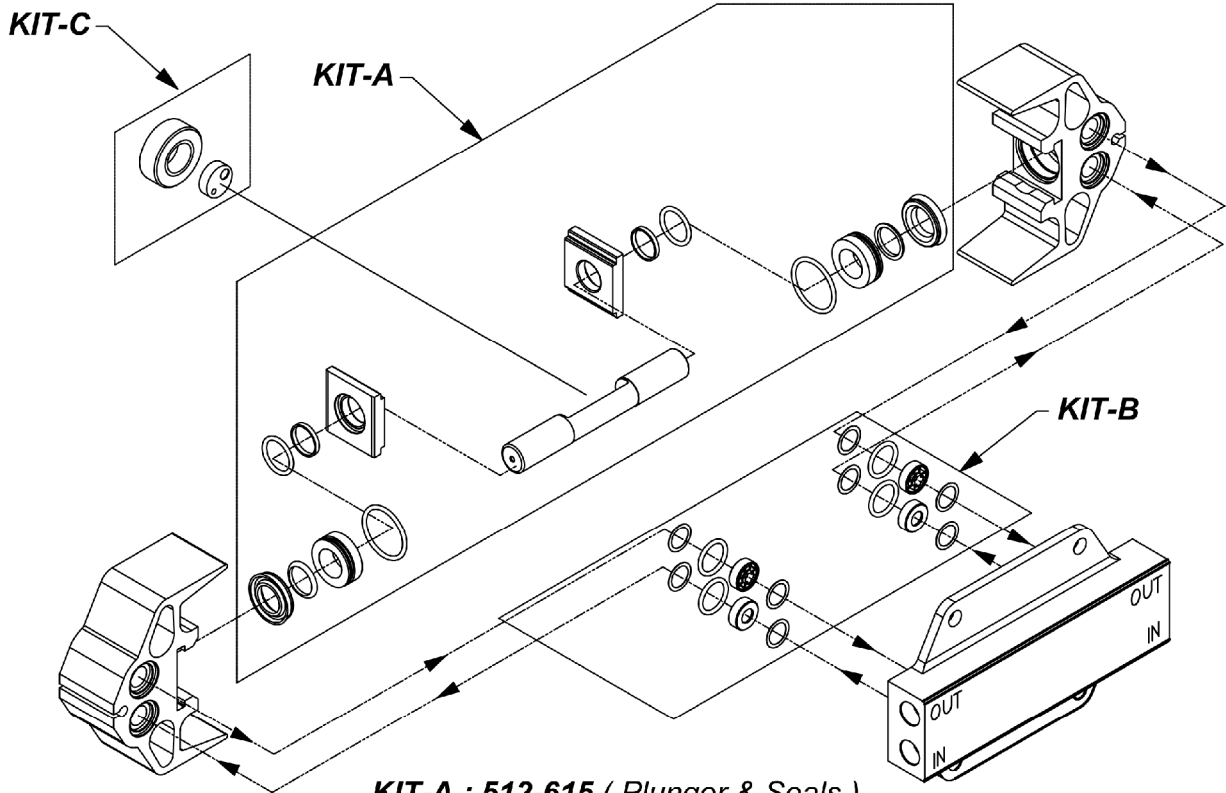
## E1200 PARTS LIST

REF	PART NO.	DESCRIPTION	NOTES:
1	263-105	Prime Line, 4'	
2	263-150	Garden Hose, 1/2" x 50' (MXF)	Not Shown
3	305-210	Switch, Toggle 110v / 220v	
4	305-225	Switch Plate, ON/OFF	
5	305-230	Switch, Rocker 20 Amp	
6	315-015	Cord, 25' Black 12/3 SJTW-A	
7	315-040	Cord, Fan - Muffin	
8	333-010	Fan, Muffin 6"- 115V	
9	335-005	Strain Relief, 12 Gauge	
10	335-015	Strain Relief, 16 Gauge	
11	340-025	Fuse, 20 Amp 250V Slow	
12	345-005	Fuse Holder Panel	
13	350-005	Strap Velcro	
14	355-101	Vacuum, 2-STG Straight Cap 115V	
15	360-017	Gauge, 2000PSI	
16	400-045	Hex Nut 5/16 Zinc	
17	400-115	Locknut, 1/4 x 20 Nylon SS	
18	400-130	Locknut 10 x 24	
19	400-135	Locknut, 1/4 x 20 Nylon Zinc	
20	400-165	Locknut, 1/2"	
21	405-010	Bolt, 1/4 x 1 SS	
22	405-020	Bolt, 1/4 x 1-1/4 SS	
23	405-065	Bolt, 1/4 x 6 Stove Zinc	
24	405-210	Bolt, 5/16 x 1 GR5 Zinc	
25	405-615	CS, 1/4 x 1/2 SS (Hex HD)	
26	405-620	CS, 1/4 x 3/4 SS (Hex HD)	
27	410-005	MS, 1/4 x 1 Phil SS Flat/H	
28	410-058	SMS, 4 x 1/4 Pan Phil S.S.	Not Shown
29	410-150	MS, 10-24 x 3/4 FLT/H	
30	410-160	MS, 10-24 x 3/4 Pan PH SS	
31	410-175	MS, 10-24 x 2 1/2 RH RB Zinc	
32	410-205	MS, 10-32 x 1/2 Panphil SS	
33	415-040	LW, 5/16 Zinc	
34	415-115	FW, 10 SS	
35	415-120	FW, 1/4 Zinc	
36	415-125	FW, 1/4 SS	
37	415-155	FW, 1/2 SS (Stand/Max OD)	
38	415-156	FW, 1/2 SS	
39	415-185	FW, 3/4 SS	
40	415-195	FW, 1 SS	
41	415-200	FW, 5/16 Zinc	
42	415-305	FNDW, 1/4 SS	
43	420-055	Rivet, Al/Al #46	
44	420-105	Rivet, Al/St #66	
45	420-151	Rivet, Fullysealed #68	
46	425-005	Clamp, #8	
47	425-010	Clamp, #20	
48	435-015	Handle, Brass/Chrome	

49	440-006	S.S. Hinge 2" x 2"	
50	445-015	Latch, Machine	
51	445-020	Latch, Striker	
52	455-005	Caster, 4" Swivel	
53	455-052	Wheel Cap Dome	
54	455-057	Wheel, 8" Grey/Black Hub	
55	465-065	Brace, Ninja Tank	
56	470-051	Axel, Ninja HD	
57	475-010	Gasket, Rubber - 1 1/2" Dump Valve	
58	475-030	Gasket, Lid 3/8"	
59	475-040	Gasket, 1/8 x 1"	
60	495-021C	Rec Tank & Lid Ninja	
61	495-035	Base, Ninja	
62	495-040	Sol Tank Ninja	
63	512-600	Pump, 1200 PSI & 1.5 HP Motor (110v)	
63A	512-605	Pump	
63B	512-610	Motor	
64	520-020	Pump, Rule 2800 / 110v	
65	530-020	Pressure Regulator	
66	545-100	Dump Valve, 1 1/2"	
67	550-026	Check Valve, Swing 1"	
68	555-052	Cap Nut, Knurl C/W Washer	
69	555-056	Cap, 3/8" AP530 – Press	
70	555-144	Coupling, M.Hose to 3/4 FPT	
71	555-206	Elbow 90, 1/4 FPT Extruded	
72	555-208	Elbow 90, 1/4 Street Extruded	
73	555-212	Elbow 90, 1/4 Street Extruded	
74	555-272	Hex Nipple, 1/4"	
75	555-328	Hose barb 90, 1/2 Barb x 3/8 MPT	
76	555-370	Hose Barb, 1/2 Barb x 1/4 MPT	
77	555-422	Long Nipple, 1/4 x 1 1/2"	
78	555-424	Long Nipple, 1/4 x 2 1/2"	
79	555-434	Long Nipple, 3/8 x 2"	
80	555-456	Plug, 3/8 MPT (Countersunk)	
81	555-532	Reducing Coupling, 3/8 F x 1/4 F	
82	555-636	Tee, 1/4" Street Extruded	
83	560-030	Screen, Acorn	
84	560-116	Strainer, Inline Barbed 1/2	
85	560-120	Strainer, E250 Spotter	
86	560-330	Guard, Finger, 6" Muffin Fan	
87	570-010	Vac Hose, 1 1/2 Wire Reinforced	
88	572-041	L.P Hose 3/8	Not Shown
89	572-125	Pulse Hose, 3/8"	
90	572-155	Polyspring Hose, 1/2"	
91	580-010	Q.C. 1/4" Fem (Closed)	
92	581-065	Crimp Ftng, 3/8" Pulse Hose 1/4 MPT SVL	
93	590-020	PVC ELB 1-1/2" 90, s x FIPT	
94	590-205	PVC Wall Fitting, 1-1/2"	
95	590-300	PVC Tee 1" (SWV x MPT x SWV)	
96	590-305	PVC Elbow 1" I x MPT	
97	590-315	PVC Elbow 1" Threaded 90	

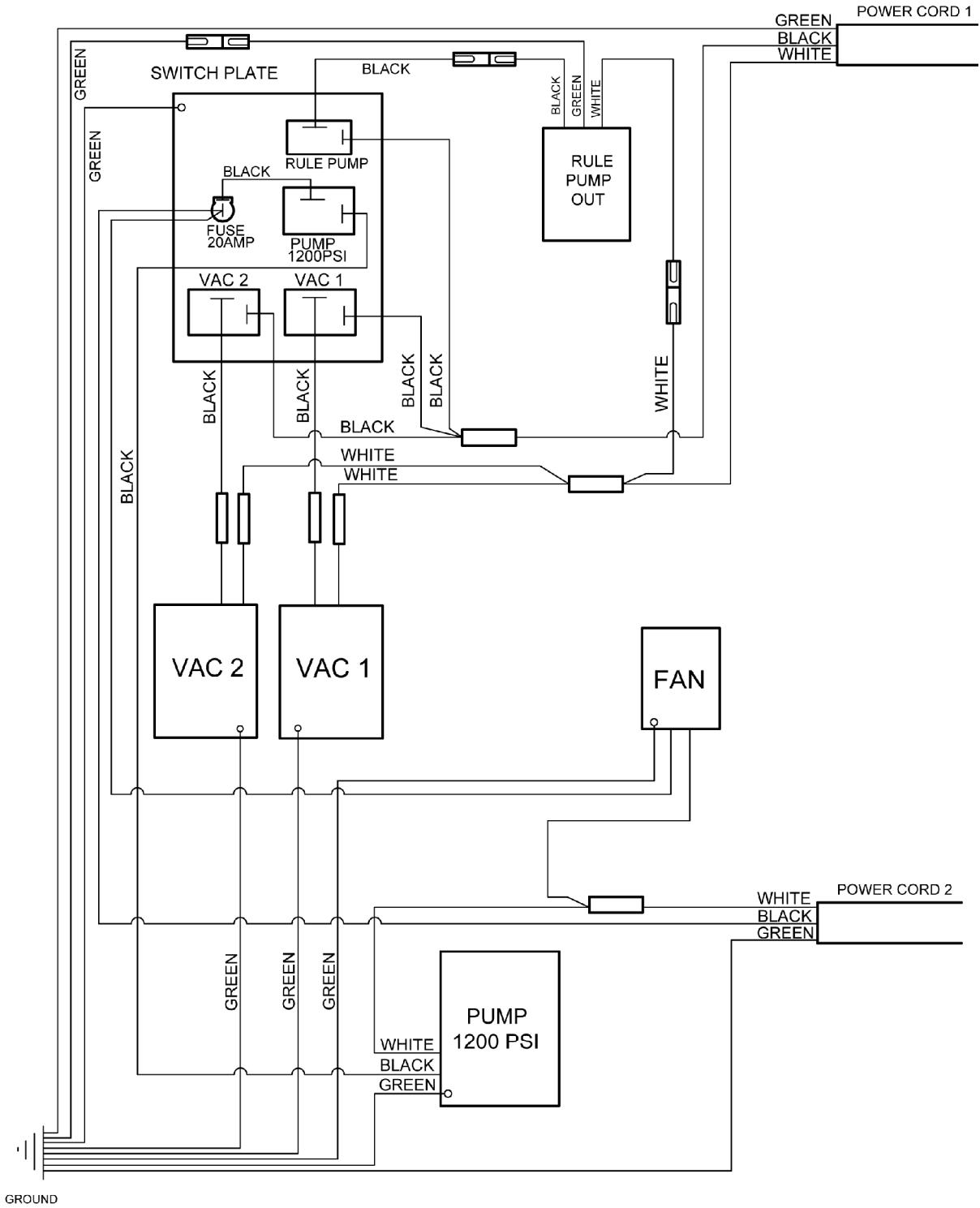
98	590-320	PVC Close Nipple 1"	
99	590-325	PVC Bushing 1-1/4 x 1	
100	590-330	PVC Coupling Threaded 3/4"	
101	590-335	PVC Bushing 1 x 3/4"	
102	590-340	PVC Close Nipple 3/4"	
103	590-345	PVC Elbow 1" MPT x SWV	
104	590-402	PVC Adaptor 1"	
105	590-405	PVC Hose Barb 1-1/2" MPT	
106	590-415	PVC ADPT 1-1/2", S x MPT	
107	595-005	ABS Pipe, 1-1/2"	
108	597-010	Flood Screen Cage - Sealed	
109	597-061	Adpt (RM) 30 Degree	
110	597-065	Valve, Diaphragm – Auto Fill	
111	800-035	Alum, .100	
112	845-010	Baffle, S/S	
113	845-030	Switch Plate	
114	845-040	Solution Tank Cover	
115	555-220	Elbow 90, 3/4 Street Extruded	
116	590-010	PVC Elbow 90, 1-1/4 S x S	
117	595-110	PVC Pipe 1-1/4	

## 1200 PSI PUMP KITS



**KIT-A : 512-615 ( Plunger & Seals )**  
**KIT-B : 512-620 ( Valve Kit )**  
**KIT-C : 512-625 ( Cam & Bearing )**

# E1200 WIRING







## WARRANTY REGISTRATION / DELIVERY ACCEPTANCE

This form must be completed and returned to Esteam Cleaning Systems to activate your warranty.

Esteam would like to take this opportunity to point out a few operating and safety recommendations for your consideration.

\* All units cords have a ground plug pin for your safety, never remove or operate any equipment if the ground pin on the plug has been removed.

\* Defoamer is to be used in all machines. Improper use of chemicals will void warranty. Drycleaning solvents cannot be used in any Esteam extractors.

\* Do not over fill recovery tanks as this will damage the vacuum motors. Vacuum motors showing any signs of moisture contamination will not be covered under warranty.

Model # \_\_\_\_\_ Serial # \_\_\_\_\_

Name: \_\_\_\_\_

Address: \_\_\_\_\_

City: \_\_\_\_\_ Province/State: \_\_\_\_\_

Postal Code/Zip: \_\_\_\_\_ Date of Purchase: \_\_\_\_\_  
Month / Day / Year

Purchased From: \_\_\_\_\_

By signing this form I \_\_\_\_\_, accept the terms and conditions of the warranty.  
(print)

I have been fully instructed in the safe operation and use of this equipment.

Signed: \_\_\_\_\_ Date: \_\_\_\_\_

Mail Warranty Registration / Delivery Acceptance to:

Esteam Manufacturing Ltd.  
3750-19th Street NE  
Calgary, Alberta, Canada  
T2E 6V2

Or Fax to:  
(403) 291 - 0546

# **ESTEAM® CLEANING SYSTEMS**

## **E1200 EXTRACTOR WARRANTY**

**NOTICE: REVIEW THIS WARRANTY CAREFULLY AS THIS DOCUMENT CONTAINS LIMITATIONS AND EXCLUSIONS.**

### **PART I:**

Esteam Manufacturing Ltd. (hereinafter referred to as "Esteam") warrants each new E1200 Extractor, subject to the limitations as defined in the specific details of its warranty coverage defined below.

### **LIMITED LIFETIME HOUSING WARRANTY COVERAGE:**

Esteam warrants the E1200 Polyethylene Machine Housing Unit to be free from defects in material and workmanship (including cracking, leaking or deterioration) for the life of the unit, expressly subject to the limitations stated herein.

In the event a defect occurs in a E1200 Housing Unit within five years of receipt by the original customer, Esteam will, if satisfied on its examination that the failure is due to defective material or workmanship, repair or replace the E1200 Housing Unit, at no cost to the original owner, other than as maybe provided for in this warranty.

In the event a defect occurs in a E1200 Housing Unit subsequent to five years (and thereafter for life) of receipt by the original owner; Esteam will, if satisfied on its examination, that the failure is due to defective material or workmanship, provide to the original owner only, a new Housing Unit, at 50% of the then published retail pricing basis, used by Esteam.

### **90 DAY LIMITED WARRANTY COVERAGE:**

Esteam warrants all switches, vacuum hoses and solution hoses to be free from defects in material and workmanship, for any defect occurring within 90 days of receipt by the original owner of the E1200 Extractor; and further subject to the limitations stated below.

### **12 MONTH WARRANTY COVERAGE:**

Subject to the Limited Lifetime Warranty and the 90 Day Limited Warranty; Esteam warrants all remaining items on the E1200 Extractor to be free from defect in material or workmanship (excluding any labour charges) for a period of 12 months from date of receipt of the unit by the original owner; and further subject to the limitations stated below.

## **PART II - REPLACEMENT PARTS (UNDER WARRANTY)**

Replacement warranty parts will be genuine Esteam parts, or parts of similar kind and quality. All replacement warranty parts are warranted to be free from defects in materials or workmanship from the date of the original unit purchase for the balance of the original warranty period namely: 90 days, 12 months, or the Lifetime, whichever is applicable; all in accordance with the terms of Part I, of this warranty.

## **PART III - LIMITATIONS ON WARRANTY COVERAGE**

### **WHAT IS NOT COVERED:**

Notwithstanding any other term or covenant of Esteam contained herein, the following provisions shall apply:

- (i) No warranty is provided for any Esteam product which has failed as a result of freezing, fire, misuse, alteration, improper amps or voltage, accidental damage, improper maintenance, unauthorized repairs, alterations, abuse, neglect or operation of a Esteam product not expressly recommended or contemplated by Esteam; and
- (ii) No warranty is provided for mechanical or electrical breakdown caused by scale, hard water buildup, improper use of chemicals or resins, damage due to environmental conditions, and acts of God, or other events beyond the control of Esteam; and
- (iii) No warranty is provided for mechanical or electrical breakdown or failure of an Esteam product resulting from ordinary wear and tear, or the consequences thereof; including but not limited to the gradual reduction of the operating performance of the product. The determination of what is or is not ordinary wear and tear is at the sole discretion of Esteam; and
- (iv) No warranty is provided for damage caused by the failure of non-warranted parts and/or accessories, even if warranted parts are damaged as a result of the failure of a non-warranted part; and
- (v) No warranty is provided for damage resulting from failure by the customer to maintain scheduled maintenance requirements. The Esteam system has many parts which must either be replaced or checked for wear on a regular basis; including but not limited to replacement filters and lubricants. This system requires regular maintenance, service and attention by the customer; and
- (vi) No warranty is provided as to any extra expenses incurred by the customer, including but not limited to economic, incidental, consequential loss or damage (e.g. all labour charges, rental equipment, down time, lodging, commercial or business loss of any nature or kind due to product failure); whether direct or

indirect, exemplary or punitive damage or loss, and whether in contract, tort or otherwise; and

- (vii) No warranty is provided as to failure of any cosmetic item or finish, labeling, silk screening, decals, paint, trim or other similar decorative items.
- (viii) Brass, rubber and synthetic rubber parts (e.g. "O" rings, diaphragms, gaskets, seals, grommets) are considered expendable in normal use, and are therefore not included in any warranty by Esteam.

#### **PART IV - EXCLUSION OF LIABILITY**

Esteam makes no warranties or representations, either expressed or implied, oral or written, in fact, or by operation of law, or otherwise, except as expressly stated herein as to the 90 day Limited, 12 month and Lifetime Extended warranties. Esteam, its officers, directors, agents, dealers and its affiliates (and their respective officers, directors, agents and dealers) shall not be liable to the customer nor to any party for any liability, including without limitation, strict liability, liability for loss, injury or damage due directly or indirectly to the use or operation of the Esteam product; consequential, exemplary and/or punitive damage or loss, whether in contract, tort, or otherwise.

#### **PART V - RETURN GUIDELINES**

Defective items must be replaced through a local Esteam Distributor. Replacement parts will be sent via prepaid regular ground service to the distributor. The defective part must be returned F.O.B. factory within 30 days including a letter providing the machine's serial number, date of purchase, material return authorization number, and customer name. If applicable, credit will be issued after the item has been evaluated by Esteam. Failure to comply with return policy will void the warranty on that item.

#### **PART VI - CREDIT POLICY**

All customers purchasing parts through an Esteam distributor must arrange credit directly with that distributor.

#### **PART VII - OUTSIDE SOURCE WARRANTY REPAIRS**

At the sole discretion of Esteam, it may be necessary to perform warranty/repairs at an outside source. An estimate must be submitted to and approved by Esteam prior to work being performed. Failure to do so will result in denial of your warranty claim.

#### **PART VIII - TRANSFERABILITY**

This warranty is not transferable to any subsequent owner.

## **PART IX - NOTICE - CUSTOMER OBLIGATIONS**

- (i) Your responsibility as a customer includes but is not limited to cleaning, lubricating, seasonal maintenance (e.g. winterizing), replacement of worn parts and all regular scheduled or unscheduled maintenance.
- (ii) Any claim for warranty must be presented to Esteam or its authorized dealer, prior to the expiration of the time limitations specified and not thereafter, otherwise any warranty is void.
- (iii) Notwithstanding the generality of the foregoing customer obligations, Esteam does hereby bring to the attention of the customer, these specific maintenance operating requirements of the E1200 Extractor to validate its warranty:

(a) Chemical Warning:

Any improper use of chemicals shall void any Esteam warranty and thusly exclude any liability by Esteam. No dry cleaning chemical may be used in a E1200 Extractor; - as any such use may result in fire or pump/motor damage. A defoamer solution must be used by customer to limit foaming in the recovery tank.

(b) Vacuum Motors:

Require use of a defoamer. A vacuum motor showing moisture contamination on interior components shall void any warranty by Esteam.

(c) Pumps:

All pumps require daily flushing with clean water after use.

Further on the 1200 PSI Pumptec pump, a 20 AMP fuse is used to protect this motor; and the pressure regulator must not be tampered with to exceed a higher operating pressure than the 1200 PSI maximum allowed.

The foregoing constitutes Esteam's entire warranty and no other warranty, liability, contingency or responsibility, direct, indirect, consequential or in any other way connected with the sale or operation of Esteam machines or chemical product is expressed or implied.

**E1200 Extractor Warranty  
Esteam Manufacturing Ltd. 3750-19th Street NE  
Calgary, AB T2E 6V2 1-800-653-8338**