



# Kingfisher Wind farms chart

**seafish**  
Kingfisher Information

**Race Bank offshore wind farm**  
January 2020

## Description

The Race Bank Offshore Wind Farm is operated by Orsted. It is situated approximately 27 km from shore in the Central North Sea, off the Lincolnshire coast. The wind farm is fully operational and has 91 turbines, a total capacity of 573.3 MW and covers an area of approximately 74 km<sup>2</sup>.



## Emergency procedures

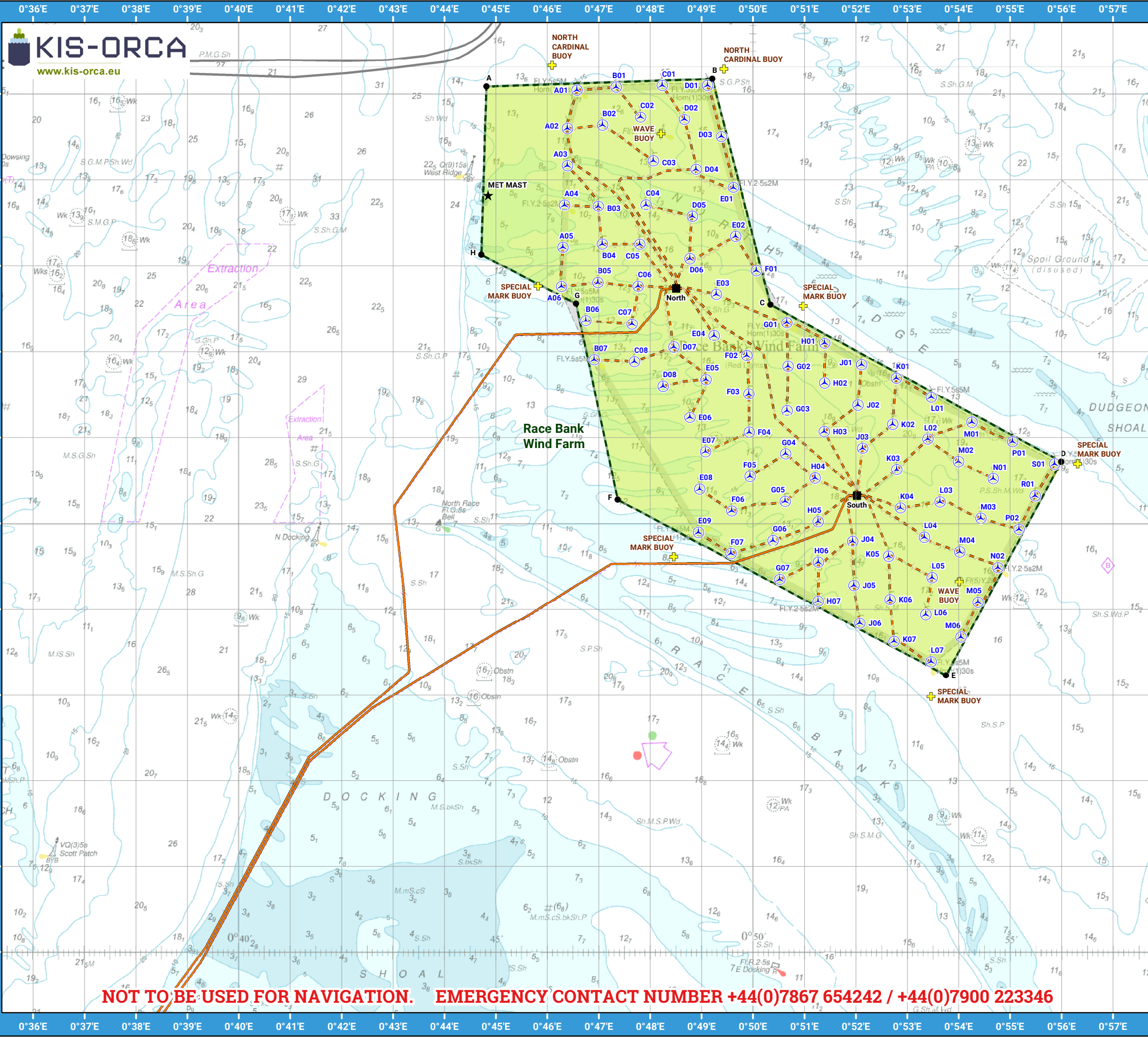
1. If you suspect you have snagged a subsea cable or renewable energy structure, DO NOT endanger your vessel and crew by attempting to recover your gear.
2. Carefully plot your vessel's position as accurately as possible.
3. Advise the Coastguard of your situation, and call the 24 hour Emergency Number and state that an incident is occurring concerning a subsea cable or renewable energy structure.

## Reducing the risks whilst fishing

To reduce the risks of fishing near offshore structures, it is essential to be up to date with KIS-ORCA information. KIS-ORCA information is easy to install on your vessel's fishing plotter and ensures skippers are able to make informed decisions for their safety.

The closer to the surface a subsea cable is lifted when fouled by fishing gear, the more danger there is to the fishing vessel. In the interests of fishing safety and to prevent damage to subsea structures, fishermen are advised to exercise caution when fishing in the vicinity of subsea cables and renewable energy structures. Loss of gear, fishing time and catch can result if a trawler snags a subsea structure and there is serious risk of loss of life.

**Emergency contact number +44(0)7867 654242 / +44(0)7900 223346**



**Race Bank  
Offshore Wind Farm**

- Key**
- Site boundary
  - Wind turbine
  - Buoy
  - Met Mast
  - Substation
  - Export cable
  - Inter array cable

Grey coloured features displayed on this chart represent additional offshore wind farm structures. Visit [www.kis-orca.eu/map](http://www.kis-orca.eu/map) for more info.

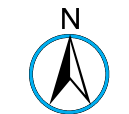
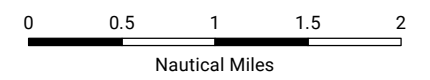


Projection: World\_Mercator  
Spheroid: GCS\_WGS\_1984  
Datum: D\_WGS\_1984

This data is issued as a guide only. Seafish, cable / structure owners and Distributors accept no responsibility for any inaccuracies however caused.

Please be aware that other structures & cables may exist in addition to those shown on this chart.

©Crown Copyright and/or database rights. Reproduced by permission of the Controller of Her Majesty's Stationery Office and the UK Hydrographic Office ([www.GOV.uk/UKHO](http://www.GOV.uk/UKHO)).



Scale @ A3:  
1:75,000

# Asset locations

## Extents

A	53°20.090'N 00°44.820'E
B	53°20.180'N 00°49.210'E
C	53°17.550'N 00°50.340'E
D	53°15.720'N 00°55.990'E
E	53°13.230'N 00°53.750'E
F	53°15.280'N 00°47.370'E
G	53°17.560'N 00°46.560'E
H	53°18.130'N 00°44.720'E

## Infrastructure

MET MAST	53°18.820'N 00°44.850'E
North	53°17.739'N 00°48.509'E
NORTH CARDINAL BUOY	53°20.333'N 00°46.096'E
NORTH CARDINAL BUOY	53°20.291'N 00°49.434'E
South	53°15.327'N 00°52.020'E
SPECIAL MARK BUOY	53°17.533'N 00°50.975'E
SPECIAL MARK BUOY	53°15.696'N 00°56.311'E
SPECIAL MARK BUOY	53°12.985'N 00°53.459'E
SPECIAL MARK BUOY	53°14.610'N 00°48.460'E
SPECIAL MARK BUOY	53°17.764'N 00°45.822'E

## Infrastructure

WAVE BUOY	53°19.537'N 00°48.212'E
WAVE BUOY	53°14.320'N 00°54.07'E

## Turbines

A01	53°20.047'N 00°46.575'E
A02	53°19.602'N 00°46.392'E
A03	53°19.166'N 00°46.392'E
A04	53°18.708'N 00°46.336'E
A05	53°18.217'N 00°46.303'E
A06	53°17.763'N 00°46.274'E
B01	53°20.081'N 00°47.340'E
B02	53°19.641'N 00°47.073'E
B03	53°18.694'N 00°46.990'E
B04	53°18.253'N 00°47.068'E
B05	53°17.807'N 00°46.982'E
B06	53°17.364'N 00°46.749'E
B07	53°16.907'N 00°46.912'E
C01	53°20.100'N 00°48.234'E
C02	53°19.731'N 00°47.813'E
C03	53°19.223'N 00°48.062'E
C04	53°18.711'N 00°47.917'E
C05	53°18.252'N 00°47.798'E
C06	53°17.765'N 00°47.764'E
C07	53°17.325'N 00°47.648'E
C08	53°16.886'N 00°47.694'E
D01	53°20.101'N 00°49.114'E
D02	53°19.707'N 00°48.666'E
D03	53°19.504'N 00°49.384'E
D04	53°19.125'N 00°48.891'E
D05	53°18.576'N 00°48.820'E
D06	53°18.087'N 00°48.770'E
D07	53°17.054'N 00°48.460'E
D08	53°16.600'N 00°48.249'E
E01	53°18.914'N 00°49.616'E
E02	53°18.344'N 00°49.659'E

## Turbines

E03	53°17.669'N 00°49.287'E
E04	53°17.189'N 00°49.240'E
E05	53°16.676'N 00°49.084'E
E06	53°16.235'N 00°48.770'E
E07	53°15.835'N 00°49.077'E
E08	53°15.403'N 00°48.960'E
E09	53°14.896'N 00°48.938'E
F01	53°17.944'N 00°50.062'E
F02	53°16.958'N 00°49.879'E
F03	53°16.511'N 00°49.917'E
F04	53°16.065'N 00°49.924'E
F05	53°15.548'N 00°49.941'E
F06	53°15.146'N 00°49.585'E
F07	53°14.649'N 00°49.569'E
G01	53°17.342'N 00°50.655'E
G02	53°16.831'N 00°50.678'E
G03	53°16.315'N 00°50.659'E
G04	53°15.811'N 00°50.633'E
G05	53°15.259'N 00°50.622'E
G06	53°14.804'N 00°50.386'E
G07	53°14.347'N 00°50.516'E
H01	53°17.100'N 00°51.389'E
H02	53°16.638'N 00°51.388'E
H03	53°16.072'N 00°51.383'E
H04	53°15.529'N 00°51.203'E
H05	53°15.021'N 00°51.262'E
H06	53°14.550'N 00°51.267'E
H07	53°14.094'N 00°51.262'E
J01	53°16.852'N 00°52.107'E
J02	53°16.381'N 00°52.038'E
J03	53°15.876'N 00°52.130'E

## Turbines

J04	53°14.794'N 00°51.934'E
J05	53°14.278'N 00°51.958'E
J06	53°13.838'N 00°52.075'E
K01	53°16.693'N 00°52.785'E
K02	53°16.156'N 00°52.712'E
K03	53°15.629'N 00°52.793'E
K04	53°15.181'N 00°52.861'E
K05	53°14.619'N 00°52.633'E
K06	53°14.114'N 00°52.661'E
K07	53°13.628'N 00°52.742'E
L01	53°16.473'N 00°53.465'E
L02	53°15.984'N 00°53.396'E
L03	53°15.254'N 00°53.633'E
L04	53°14.841'N 00°53.330'E
L05	53°14.370'N 00°53.478'E
L06	53°13.940'N 00°53.355'E
L07	53°13.389'N 00°53.459'E
M01	53°16.178'N 00°54.253'E
M02	53°15.721'N 00°53.991'E
M03	53°15.062'N 00°54.425'E
M04	53°14.668'N 00°54.015'E
M05	53°14.083'N 00°54.371'E
M06	53°13.678'N 00°54.038'E
N01	53°15.522'N 00°54.669'E
N02	53°14.486'N 00°54.759'E
P01	53°15.954'N 00°55.041'E
P02	53°14.930'N 00°55.171'E
R01	53°15.325'N 00°55.482'E
S01	53°15.696'N 00°55.860'E



## Contact us

+44 (0) 1472 252 307  
[kingfisher@seafish.co.uk](mailto:kingfisher@seafish.co.uk)  
[@kingfisherinfo](https://twitter.com/kingfisherinfo)  
[www.kingfishercharts.org](http://www.kingfishercharts.org)

**Stay up to date: Always ensure you have the latest Kingfisher Bulletin and Offshore Fishing Plotter on-board**