

Tankwatch

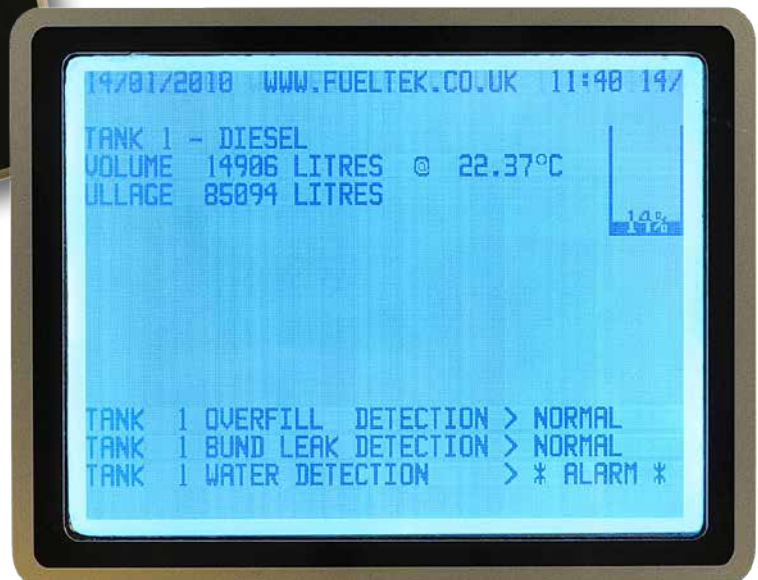
Fuel Tank Monitoring System

With the cost of road fuel rapidly rising again all transport operators are under great pressure to manage fuel resources more efficiently and be more environmentally friendly. Tank Watch helps managers by providing accurate information on current stock, available tank capacity (ullage), stock movements, deliveries and throughputs making it easy to assess any problem areas.

The **Tankwatch System** monitors the fluid inside the tank using a series of probes, the probes are connected to a control panel which is mounted locally at the fuel tank. The control panel provides a local interface at the point of storage and assists fuel delivery drivers make safe and secure deliveries.

The **Tankwatch** control panel constantly displays stock level information including ullage and also displays alarm status, if an alarm is triggered this is indicated audibly and visually at the fuel tank. The system will even provide early warning of tank leakage if unaccountable reductions in tank contents are recorded.

Tankwatch can be used in its own right to manage fuel stocks or can interface with other **Fueltek** fuel management systems which monitor pump throughput and stop unauthorised use of fuel, either way **Tankwatch** provides a powerful reporting and management tool.



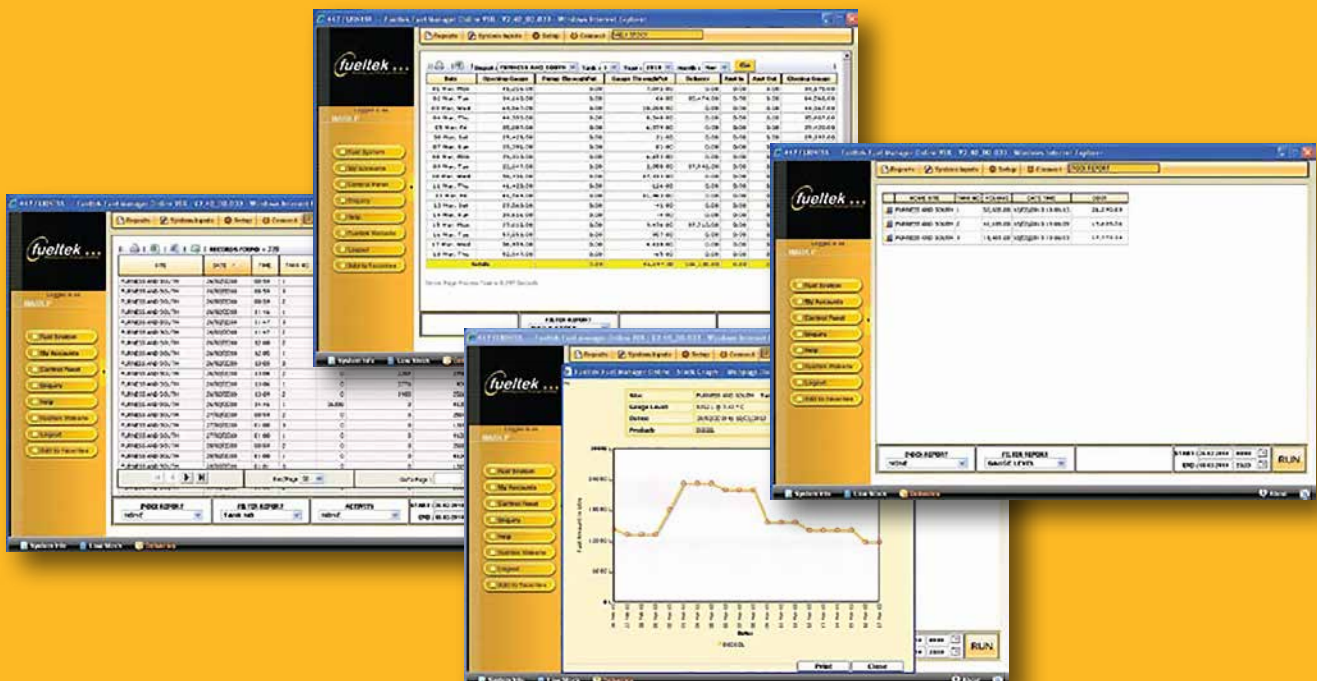
Information Displayed At The Fuel Tank

The software used for management and reporting purposes is browser based, user friendly and can provide information at any location with internet access. Communication between the remote hardware and the reporting software is most commonly done using GPRS modems to allow internet connectivity at the FACT.

GPRS (General Packet Radio Service) is a wireless data service and is a connectivity solution based on internet protocols. No call charges apply using GPRS as a small monthly rental fee covers an amount of data transferred. We can network Interface allowing the **Tankwatch** to form part of a LAN / WAN. We can utilise Bluetooth, Wi-fi or even cable RS232 or RS485 to provide a route into your own Broadband connection if required. The reporting software uses administrator set account numbers, login and password, management information can potentially be made available on any PC anywhere in the world for a user with an authorised account number, login and password.

Tankwatch is built for use in harsh transport environments, **Tankwatch** has a heavy duty enclosure, and a bright display, that is easy to read in daylight. Tank measurement is by a high accuracy pressure sensor that is individually calibrated to take account of tank geometry. **Tankwatch** can be specified for new installations but is also easily retro fitted to existing tanks.

- ENSURE THE FUEL DELIVERY DRIVER CAN MAKE SAFE DELIVERIES WITHIN REGULATIONS
- DISPLAY CURRENT STATUS AT THE FUEL TANK. DISPLAY STATUS AT A PC LOCATION (IF SPECIFIED)
- PROVIDE AUDIBLE AND VISUALLY ALARMS AT THE TANK LOCATION IF AN ALARM IS TRIGGERED
- PROVIDE NOTIFICATION OF ALARM STATUS AT ANY PC IF AN ALARM IS TRIGGERED (IF SPECIFIED)
- PROVIDE NOTIFICATION OF ALARM STATUS AT ANY MOBILE TELEPHONE. ALARM STATUS CAN BE EMAILED TO ANY VALID EMAIL ADDRESS (IF SPECIFIED)
- LOG DELIVERIES
- LOG STOCK MOVEMENTS
- PROVIDE WARNINGS IF DELIVERIES OR STOCK MOVEMENTS EXCEED OR FALL SHORT OF EXPECTED LEVELS
- ROBUST ALL WEATHER HOUSING
- LOCAL ALARMS – AUDIBLE AND VISUAL
- MUTE FACILITY
- REMOTE ALARMS
- HIGH ACCURACY 0.33% TYPICAL
- TEMPERATURE COMPENSATION
- LEAK DETECTION
- WATER DETECTION
- HIGH AND LOW LEVEL DETECTION
- BROWSER BASED – ACCESSIBLE THROUGH AN INTERNET CONNECTION
- RELEVANT MANAGEMENT REPORTS SHOWING STOCK HISTORY



User Friendly, Reliable, Cost Effective Fuel Management Systems



FUELTEK LTD, Lang Court, Nuttalls Way, Shadsworth Business Park, Blackburn BB1 2JT

Telephone: 01254 291391
E-mail: info@fueltek.co.uk

Fax: 01254 291399
Website: www.fueltek.co.uk