

# PROJECT CONTROL INNOVATIVE DATA CENTRE SERVICES & SOLUTIONS



**molex**<sup>®</sup>

# THE DATA CENTRE > SPECIALISTS

## Why Molex?

The data centre is at the heart of critical infrastructure, which means that it has become increasingly important to be able to identify and understand new technologies to ensure higher speeds and greater availability.

So, who do you turn to for help to navigate the complexity and added workload of building brand new or updating existing data centre facilities?

Molex offers over 30 years of experience in the design and manufacture of end-to-end solutions, as well as hundreds of years of combined employee experience in making structured cabling systems that businesses around the world rely on.

By helping you turn your requirements into future-proof, critical facilities, we can save you time, money and energy.

In short, working with us means you're partnering with a trusted advisor that can help you to ensure the changes you make today will meet your customers' demands tomorrow.

## Project Control *Multi-site projects made easy!*

It's a reality that dealing with multiple vendors and contractors can mean a project owner loses time in their day that simply cannot be recovered.

Add to that the capabilities void that's left behind when IT and Facilities personnel are seconded to IP infrastructure builds and you'll perhaps recognise some familiar issues.

These are just two of the reasons we've developed **Project Control** to provide a unique turnkey project management solution for organisations with IT infrastructure deployment programmes across multiple sites.

Project Control enables a single point of contact for all of your projects, no matter their location and our proven project management methodology gives you access to live project status updates for each of your sites, 24-7.

From consultancy and design through to vendor management and installation; our fully-accountable service includes staging, commissioning and IP rollout services.

Project Control provides a flexible turnkey service, which helps you recover time lost, enables better deployment of internal resources and instantly creates clarity from complexity.



### **Creating value**

Ours is a rich history gained designing and developing IP-related products and solutions and over the years we've learnt a thing or two about helping our customers get it right first time.

A relationship with Molex isn't simply about products; we can provide expert technical support and add real value to every stage of a new site build or during the upgrade of an established site. We can provide you with the most efficient design for your data centre to maximize space, energy and cost, wherever it is located.

### **Extensive data centre experience**

By supporting rapid technology growth and next-generation open compute rack scale architectures with bandwidth and distance requirements, we supply some of the world's highest-density deployments.

For example, one of our latest data centre projects covered over 430,000 sq ft, encompassed 400 racks and cost over \$150 million US dollars. We were able to achieve complete customer satisfaction by providing the highest-quality products, professional trusted advice and all of the product delivery requirements.

### **Vendor-neutral**

Perhaps a little surprisingly for an established solutions manufacturer, we maintain a fiercely vendor-neutral position, which means that by choosing Project Control you are assured of getting the products *you* specified, whether or not they carry the Molex brand. Our commitment is to ensure that your needs come first; it's one of the reasons we enjoy such a loyal, global and growing customer base and something we're extremely proud of.

### **Leading product solutions**

Of course, we're proud of our own solutions too and Molex products cover the full range of data centre requirements to support the latest standards and trends.

Engineer-designed and manufactured in our own factories to ensure high-quality and high-durability we offer a comprehensive 25-year System Performance and Application Assurance Warranty on qualifying end-to-end passive solutions.

The combination of our training and warranty provides our customers with the assurance that their network infrastructure is supported throughout its lifetime.



# THE SOLUTION > SPECIALISTS

**Mod Link Plug and Play Copper Solution** - Factory terminated Plug and Play solutions offer enterprises a number of advantages over traditional cabling systems. Deployment is faster, performance is guaranteed, and the need for on-site testing is minimised. Plug and Play solutions are ideal for installations where quality and speed of implementation are paramount, and are ideal for high-density environments such as data centres, Storage Area Networks (SANs) and server rooms.

**Mod Link Plug and Play Fibre Solution** - Factory Terminated Fibre solution that provides flexible system configuration including MTP/MPO adapters and cable assemblies. Provides a multitude of options, for 10G to 100G applications, guaranteed pre-terminated components. Rapid deployment, economical solution enables your mission critical data centre to be up and running fast.

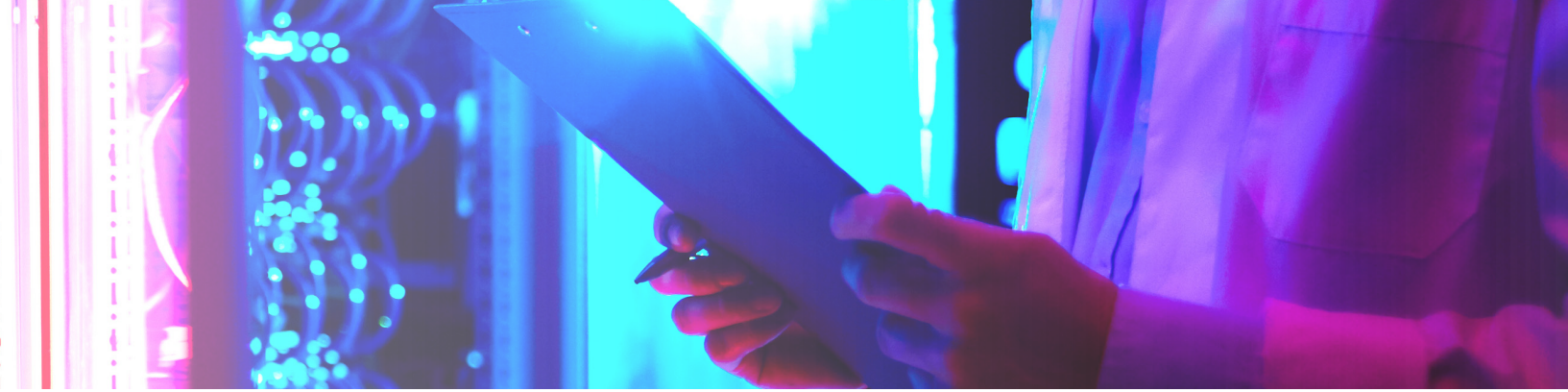
**Mod Link Plug and Play Fibre Xtreme Density (XD) System** - ideal for data centre applications. Provides 120 fibres in 1U or 288 fibres in 2U of space with an HD-LC Quad adapter footprint. This gives you reduced cable weight, less cable routing and less HVAC interface.

**Lightband – Optical Fibre Solution** - Our comprehensive range of Optical Fibre covers all aspects of a fibre installation from the provision of adapters, connectors, cable assemblies and enclosures. Like our PowerCat 6A range, the emphasis is on our platform's ability to provide flexibility, modularity and re-usability. All critical in lowering the cost per port. Our enclosures have been designed to ensure futureproofing and provide scalability. Interchangeable adapter plates allows seamless transition and opens the opportunity to plan for future installations today. Our range of Keyed LC optical fibre products and locking enclosures ensures security.

**PowerCat 6A Solution** - Molex's Shielded solution provides superior performance by isolating interference from cables – critical to optimum performance. Attention to detail sets Molex apart from our integrated retractable shuttered shielded jacks, providing protection from the environment to our clustered pre-terminated cable assemblies for easy rapid deployment. Our emphasis is extending value by lowering cost per port.

Waste-elimination is the key. We expect our customers to recycle as much of our platform as possible when investing in the next-level technology. The Molex DataGate / Synergy patch panels encourage recycling by providing a footprint that is upgradeable. We envisage our customers using and reusing these patch panels from C6A to C8 and beyond.

**Variokeystone range** - Variokeystone system is a flexible structure that allows for easy cable “upgrade” of a system to a higher or lower class, as well as the multiplication of applications sent via a single cable (management of each separate pair).



**Active Optical Cables (AOC)** - Used for high data rates, can go longer distances with less power. By use of silicon photonics optical engines they maintain the highest data integrity and reliability. Providing your data centre with a way to conserve power while achieving speeds up to 100Gigabits.

**SFP/ QSFP** - Small Form Factor Pluggable and Quad Small Form Factor Pluggable cable assemblies. For connections within your data centre equipment, interconnections and for links over 100 meters. Gives you the advantage of a one stop shop, not only infrastructure, but internal components as well. We offer all standard fibre optic connectors along with Plastic Optical Fibre interconnect Flexi Bend assemblies and a variety of other products to complement all fibre systems.

**VRM - Vertical Rack Cable Manager** - A solution that works in any open bay rack. Maximize your available floor space, improve your cable flow and enable high density installations. Data centres demand protection of connections, correct bend radii and ease of Moves Adds and Changes; our VRM system ensures that.

**Breakouts and Splice Cassettes** - To deliver the ultimate in flexible cabling solutions for even the most complex data centre installation or upgrade.

**CWDM** - Next-generation reconfigurable optical add-drop multiplexer (ROADM), wavelength selective switch (WSS), multicast switch, dense and coarse wavelength division multiplexing ('DWDM' and 'CWDM' respectively), optical amplification, signal switching and routing, signal conditioning and monitoring, and fibre interconnect / termination / distribution, as well as a full suite of optical transceivers supporting data rates up to 100Gbps.

**Direct Attach Plugs** - Field-terminable RJ45 IDC plug that provides tool-less installation. Allows termination in the field for any length cable, eliminates need for telecommunication outlet and patch cords. Ideal for data centres, industrial Ethernet and CCTV applications, bringing all IoT components together for you.



# FUTURE-FOCUSED > TODAY

**ZCD** - Molex is already developing the 400 Gigabit Ethernet platform today. Based on emerging silicon photonic technology, the ZCD range delivers 25G/ps across 16 lanes and is designed to meet a wide range of customer-specific applications.

The ZCD range will provide high bandwidth performance be it either in passive, or active, copper twinax or optical fibre configurations, all with the smallest footprint in the market—maximising spacial density.

**MXC Optical Interconnect Solutions** - Using Hybrid Silicon Laser and Silicon photonic technology, the MXC platform is capable of up to 1.6 Terabyte per cable. With 64 Fibres (32 transmitting and 32 receiving at 25G/ps), the MXC is the same size of as the LC connector or MTP Connector. Cable assemblies come in a variety of fibre counts and can also be backwards compatible with a MXC and MTP hybrid cable. Allows the use of OM3/4 or single mode fibres supporting both VCSEL and silicon photonic technologies A terabyte per port is a reality today with Molex.



# Connected Enterprise Solutions

## Connected Enterprise Solutions

**Nigel Hollingworth**  
**Integrated Solutions Sales Manager, EMEA**

+44 (0)7714 853733  
nigel.hollingworth@molex.com

[www.molexces.co.uk](http://www.molexces.co.uk)

Connecting Enterprises **Simply Solved**