

Print Control Software



docQmanager

— print queue management —

docQview

— print preview —

docQsplit

— colour split —

docQticket

— job ticketing —

docQcollate

— combine ticketed jobs —

docQforms

— variable data forms —



docQrules

— print rules & routing —



oneQprinting

— universal print workflow —

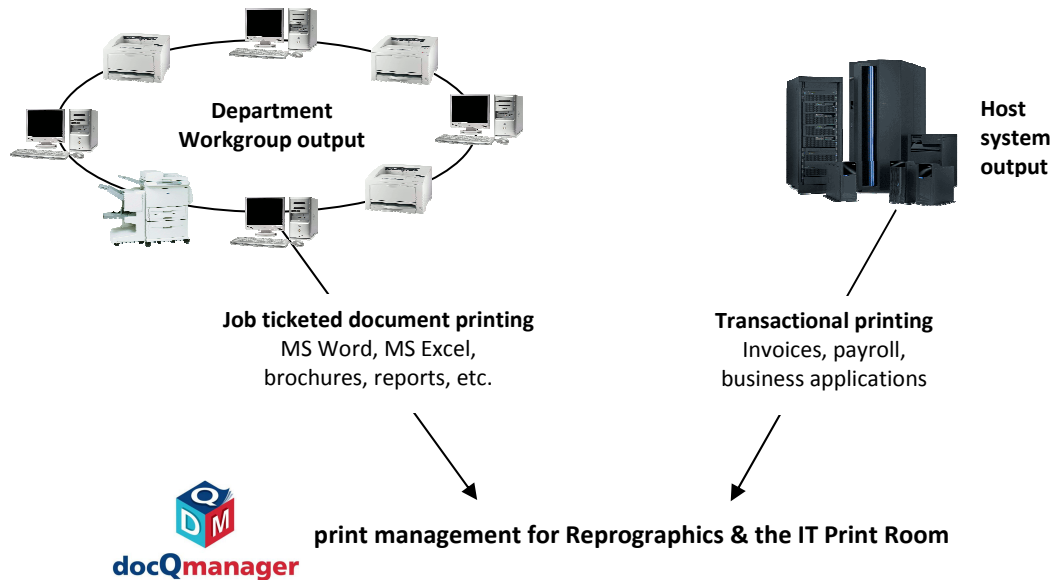
For managing print workflow



Software to control document and transactional printing

docQmanager and its suite of optional modules has been developed by ATI from its long experience of customer requirements in the business of production and network printing.

Managing and minimising costs is a fundamental requirement within any organisation including those relating to printing processes in Central Reprographic Departments (CRD), IT host systems and the departmental work group. Whether it is just the core docQmanager product providing a basic "hold and release" function in an IT environment, or a combination with the other modules for managing workgroup and CRD print workflow, the ATI software suite provides the solution.



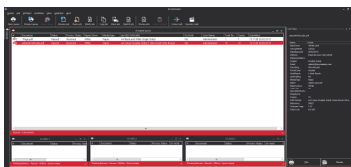
Print job control and print room workflow

Hold & release – copy & move

Simple drag and drop functionality to allocate jobs to devices, enables print jobs to be prioritised so that printer utilisation and productivity are maximised.

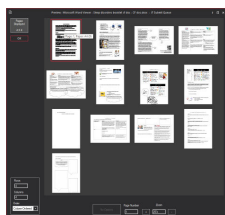
Customisable user interface

Displayed queue information may be modified and queue displays freely arranged to meet operators' needs.



Preview and reprint

Print jobs may be previewed on screen to check before committing to print. Selected pages or parts of a job may be printed by page number or by scrolling through the preview to choose the section to output without having to revert to the original host application.



Automated workflow

Print room workflow efficiency can be enhanced using the powerful scripting function within docQmanager. Jobs may, for example, be automatically output to a particular device or clustered group based on job information details and printer status. Notification may be sent to users automatically by email or pop-ups.

Clustering

Large time critical jobs can be automatically split and spread across several clustered printers to save cost and meet deadlines. For example 2 x 135ppm and 2 x 85ppm devices may be clustered to give a virtual 440ppm printer. Jobs are split intelligently by page range or set and apportioned to the devices relative to their speed

Load balancing

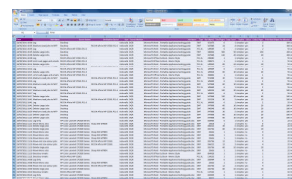
Printer groups can be configured for "round robin" distribution or load-balancing to automatically send print jobs to the first available printer. Printer state is checked using SNMP to automatically bypass non-working printers

Automatic backup and delete

Print job administration and good housekeeping is assisted by an automatic self-managing print job archive. Users can specify which queues to back up and how long to keep print jobs.

Print job accounting

All print job activity and key parameters are logged and available for export to an external reporting system of choice. In addition, where required, docQmanager integrates with various third party print job accounting systems.



Mixed networks

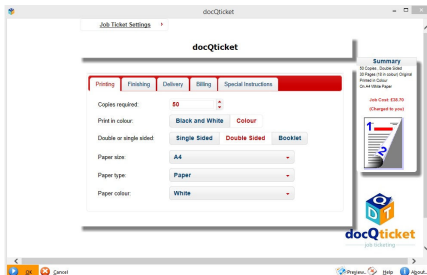
Printer output from disparate network systems can be co-ordinated by making docQmanager the common central print spooler system. It is simple for UNIX, mainframe, Windows and other users to submit jobs to docQmanager. From here the print room operator has a single familiar control point for managing all print jobs and printers.

Software to bridge the office & print room

Job ticketing - remote job submission



an optional module to **docQmanager** providing a system for the efficient transfer of users' print jobs across the network, or the internet, to the CRD with electronic job ticket instructions defining processing and finishing requirements.



Print accounting software support

docQmanager and **docQticket** uniquely integrate with Equitrac, PaperCut, PCounter, SafeCom and YSoft SafeQ print accounting and client billing systems, so that both the departmental workgroup and the CRD can charge into the same enterprise accounting system, including charging for finishing and features that are unique to the Print Room.

Job collation



an add-on option to **docQticket** enabling users to combine multiple documents from different applications into a single job for submission to the CRD.

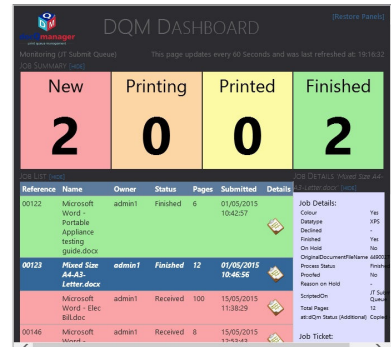
Colour split



an add-on option module to **docQmanager** for the CRD enabling colour pages to be automatically split from black and white pages within a print job so that they may be sent to the most appropriate device to increase productivity and save cost.

Job status reporting

From a "dashboard" web page display print room operators can see at a glance print activity and status while users can be given access through their browser to view the status of their own particular jobs. Users may also be notified of job progress by automated emails triggered by the print room.



Variable data forms



a sister product to **docQmanager** providing automated variable forms overlay output with forms created using the simplicity of Microsoft® Word®.

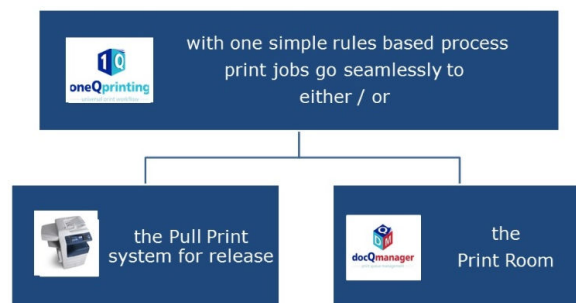
Rules based printing



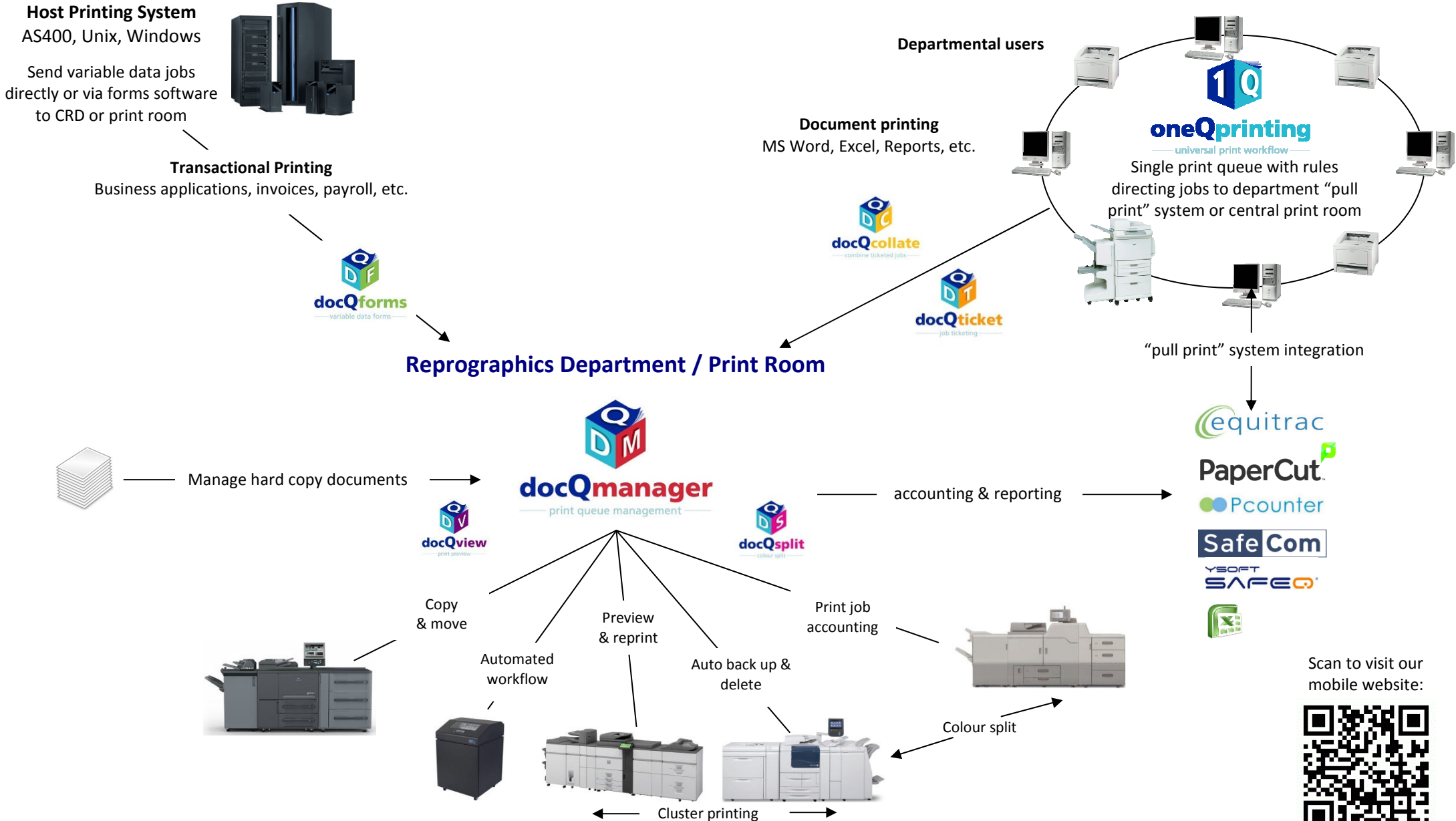
a distinct and separate ATI product based on the same architecture as **docQmanager**. Configured by the administrator and deployed on network print server(s) it provides rules based control over departmental network printing such as controlling email printing and enforcing policies on colour and duplexing to reduce printing costs.



OneQ an extension of the core product suite specifically designed to give rules based print cost control in organisations which have a network "pull-print" system and a central print room. **OneQ** provides a seamless one step print workflow throughout such an organisation by using a single common print driver and simple interactive rules based job ticket to ensure the most cost effective destination for print jobs – large jobs go to the print room, smaller jobs go to the pull print system MFDs for release.



ATI output management software – bridging office & production print



Scan to visit our mobile website:

