

What you will find in your Expandachem pack:

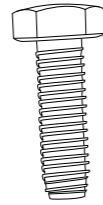
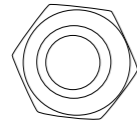
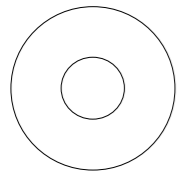
Floor:

1 x sumped floor chassis

Parts:

4 x Corner Posts
3 x wall panels (3 half panels, 8 full size panels)
1 x roof panels
1 x double-door panel
Suspended floor grate

Fixings:



Box of M8 Washers, nuts and bolts



The tools that you will need:

13mm Spanner
13mm Socket set
2 people

Notes for assembly:

1. For the best results, assemble the Expandachem on level ground so as to avoid bending of the chassis and complications with the aligning of the panels.
2. On initial assembly, only hand-tighten all nuts and bolts, when assembly is complete tighten all nuts and bolts with your socket spanner.
3. Prior to fitting the door panel, adjust the roller catch on the door to the fully 'in' position before closing (using a standard flat blade screwdriver) on the adjusting screw located on the roller catch. Once the store is fully assembled, the catch can be adjusted back out until the door close with ease.
4. Retain all parts if demounting.

Notes after assembly:

1. You can return the Expandachem back to it's original flat pack form at any time.
2. Expandachem is not designed to be stacked when it is assembled.
3. You can lift the Expandachem by crane or forklift.

1. Unpacking:

a. Exandachem arrives flat-packed. Position the flat pack unit in the place that you wish to assemble it, or un pack the contents and then position the chasis in your preferred site.



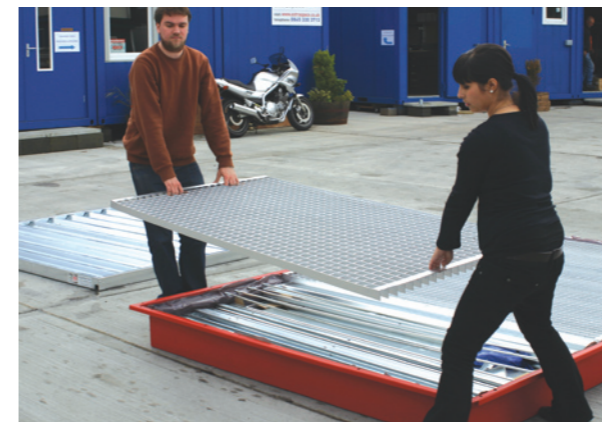
b. Undo the 4 lifting points using your 13mm spanner (retain these for future use incase you want to return the Expandachem to its original flat-pack form).



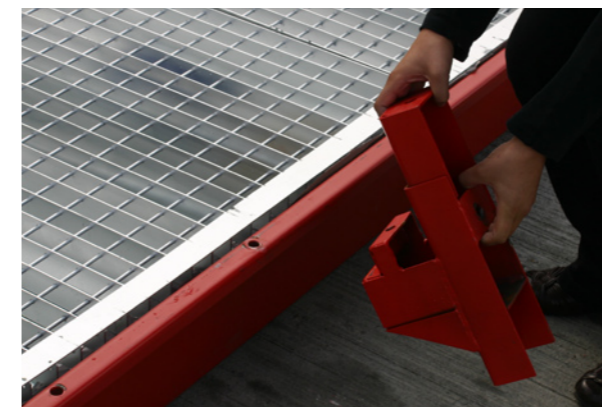
c. Remove retaining bolts



d. Remove the roof panel

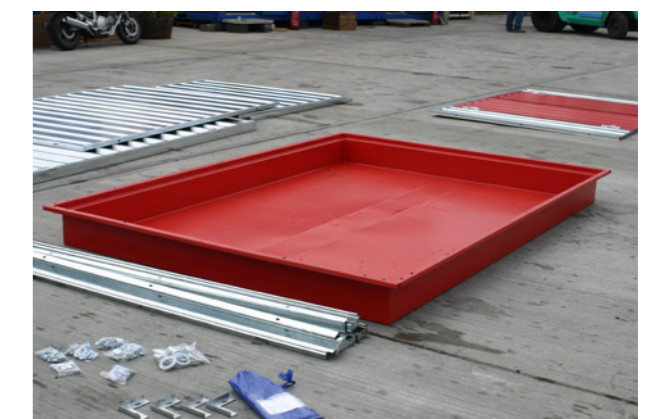


e. Unpack and place aside all of the contents and packaging materials



f. Remove the lifting brackets and retain for future use incase you wish to demount the unit in the future.

g. unpack all of the contents, leaving just the base/chasis, position this in your desired location on level ground.

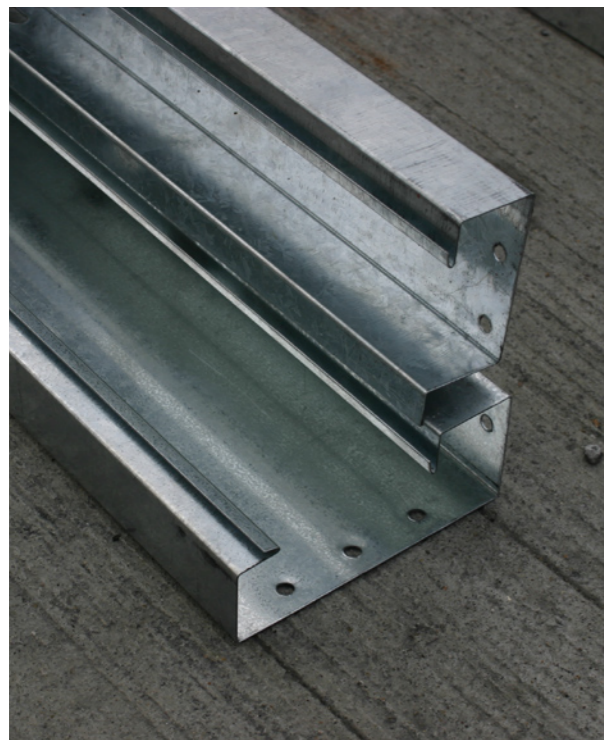


2. Corner Post and Wall Assembly

a. layout out the corner posts, these need fixing together in sets of 2.



Parts 'a' need to be fixed to part 'b' and should then be bolted together



b. Add the fixing corner plates to the four corners of the sumped base.

c. The six holes at the end of the corner post should be positioned topmost

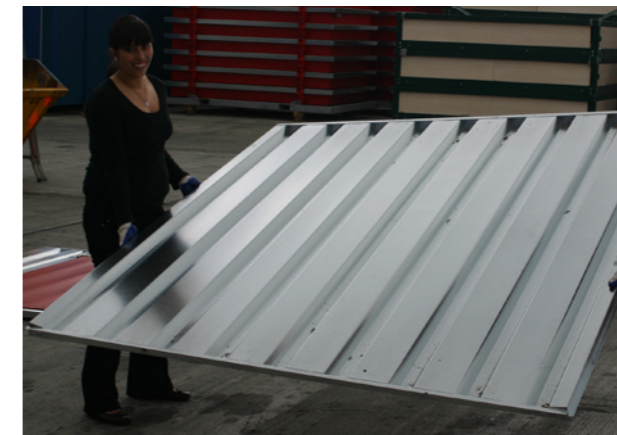
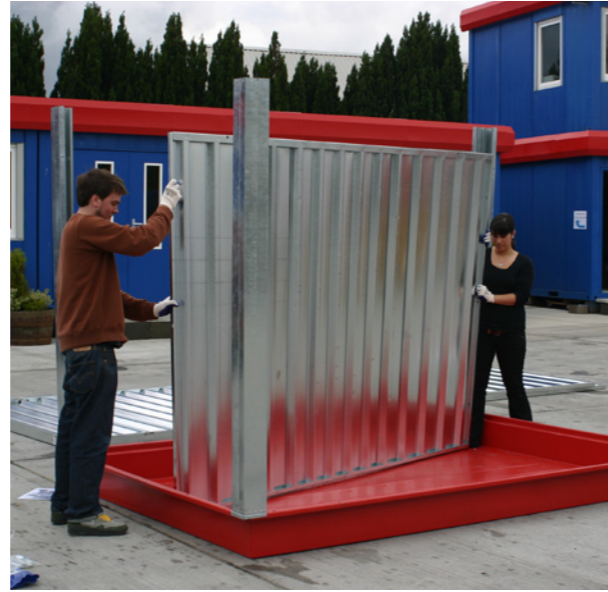


d. Fix the four corner posts to the base of the with the bolts supplied, the post foot overlaps the outside edge of the base.



3. Corner Posts and Wall Fitting

a. Lift the 3 wall panels (leave the door panel until last) into position and fix to the base. Check that the wall panel lip overlaps the base edge. Hand tighten the bolts that fix the wall panels to the base and to the corner posts.



4. Wall Panel and Roof Panel Fitting

a. Once the 3 walls are in position, then place the floor grates into the base, these are supported by the edge of the sump base, created a suspended floor.



b. Then insert the door panel, hand tighten all of the bolts fixing the panels to the base and the corner posts.

Note: Prior to fitting the door panel, adjust the roller catch on the door to the fully 'in' position before closing (using a standard flat blade screwdriver) on the adjusting screw located on the roller catch. Once the store is fully assembled, the catch can be adjusted back out until the door close with ease.



c. Then lift the roof panel and slide it on the the unit and into position, pull down on the roof panel to check that it clicks into position correctly, helping to strengthen the rigidity of the structure.



5. Roof Fixing

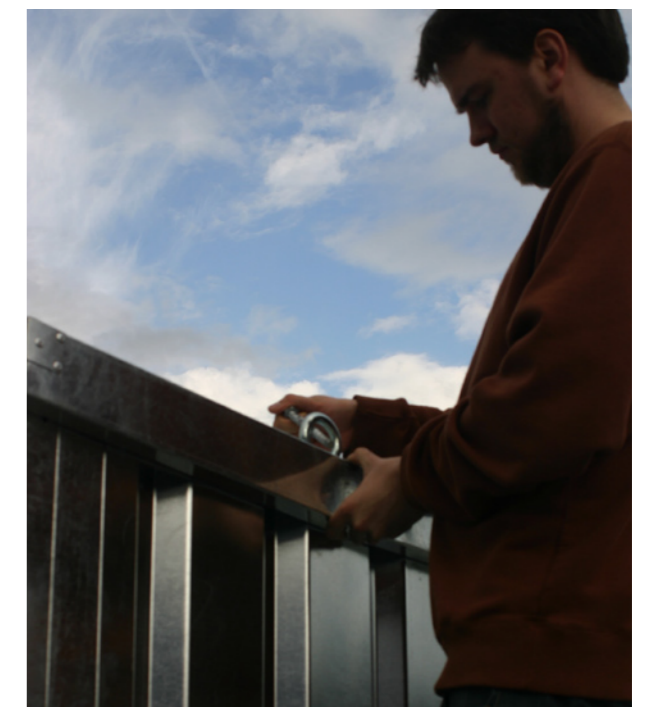
a. Assemble the lifting rods by screwing the hook onto the rod.



b. screw the rod into the base of the unit.



c. Tighten the rod in its position by using a lever to turn the the lifting eye (and the rod) in its position.



6. Door Fitting

- a. Fix the door handle and locks into position



7. The Expandachem is now ready for use

Your Expandachem is now ready for use. We trust it will give you many years of service.



Lifting

Your assembled Expandachem can be lifted by crane using the lifting eyes or by forklift.



Accessories

The Expandachem has various accessories, these include:

Linking Kit

The Expandachem can be linked together end to end or side to side at any time.



Ramp



Door Closer



Shelving brackets



Shelves

Tool bin



Cable Hook