



**DIAMOND**  
FIREPLACE & STONE



**CENTURION**  
STONE



**2016 STOCKING LIST**



Since 1969, Centurion Stone Products has led the way to secure stability and performance in the precast stone industry. Architects, builders, general contractors and designers nation-wide are confident in the craftsmanship offered by Centurion as a global leader.

The “Close to Nature” appearance of Centurion’s wide variety of products has made it a favorite worldwide for decades. Centurion’s stone has a distinct advantage because it is lighter, cost effective and easier to install than natural stone. Our state of the art facility enables us to manufacture quality products that meet the high standards we set for ourselves and that our customer’s expect. Centurion maintains a timeless goal of making a product that will last for decades regardless of the climate.

## **DYE LOTS MAY VARY**

Due to the manufacturing process, the appearance and color of your stone may vary slightly from the samples on display. Diamond Fireplace & Stone cannot guarantee the colors.

Centurion Stone colors in this brochure may appear to vary due to individual lighting conditions of each photograph. We recommend you examine actual product samples before selecting colors.

Availability may change. Additional non-stock products are available at [Centurionstone.com](http://Centurionstone.com) these products are available subject to minimum order requirements.

# Ledge

Our ledge pattern offers a versatile, mosaic blend of tints and shades that give a natural look to any structure. Each stone is formed in a medley of irregular shapes and sizes that fit together to give a weathered appearance.



Appalachian



Arizona



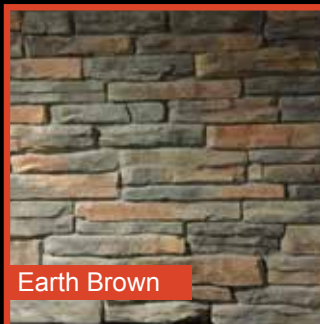
Appalachian



Black Rundle



Bucks County



Earth Brown



English



Grey



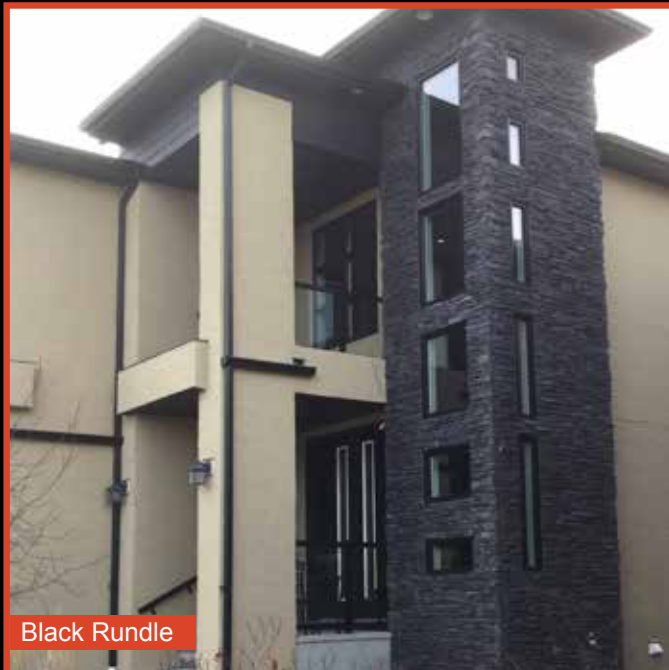
Kentucky



Mt Rundle



Pennsylvania



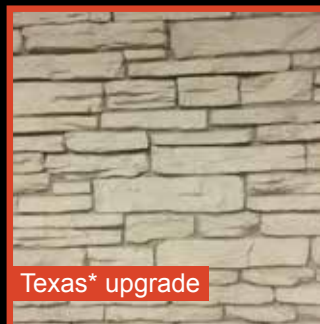
Black Rundle



Plain



Southern Wheat



Texas\* upgrade



White Cap Rundle

# Rubble

The picturesque Rubble pattern recreates the chiseled, squared stone of age old craftsmanship. Stones are fashioned with meticulous attention to size and shapes that fit together in a semi-coursed pattern to produce a casual warmth.



Appalachian



Arizona



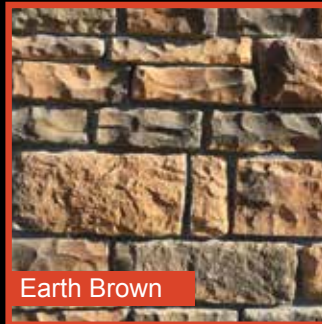
Black Rundle



Bucks County



Chardonnay



Earth Brown



English



Grey



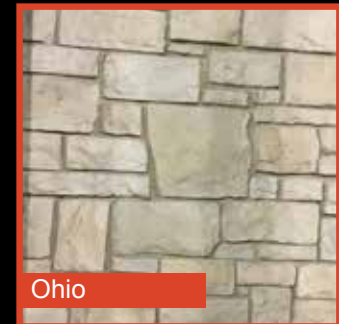
Kentucky



Millwood



Mt Rundle



Ohio



Pennsylvania



Plain



White Cap Rundle



White Cap Rundle



Texas\* upgrade

# Stack

Centurion Stack creates a unique and distinctive appearance for each application. Natural earth tone colors harmonize in a stacked order to form a one of a kind statement. The features of the pattern include chiseled edges, irregular depths, cleft, and aged surfaces. Most representative of the stone fences constructed in the 19th century



Appalachian



Appalachian



Mt Rundle



Arizona



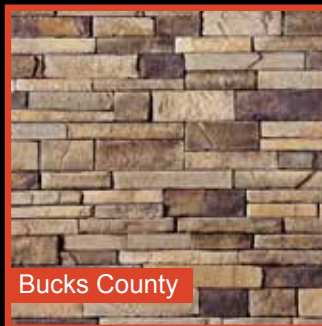
Chardonnay



Earth Brown



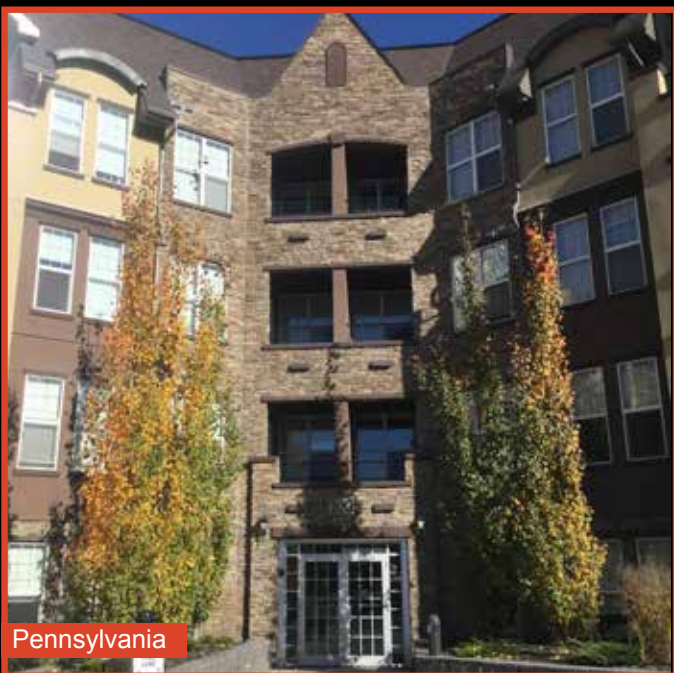
Black Rundle



Bucks County



Grey



Pennsylvania



Kentucky



Mt Rundle



Pennsylvania



White Cap Rundle

# Rustic

The character of this coursed blend of Centurion's Stack and Rubble patterns is popular in modern architectural applications and creates a statement of artful distinction.



Appalachian



Arizona



Black Rundle



Bucks County



Chardonnay



Earth Brown



Grey



Kentucky



Mt Rundle



Pennsylvania



White Cap Rundle



Kentucky

# Accessories

Limited quantities in stock. Availability varies.



610 Window Stone



611 Trim Stone



860 Hearth Stone



867 Beveled Column Cap



875 Chiselled Water Edge



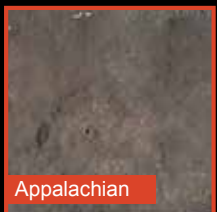
880 Keystone



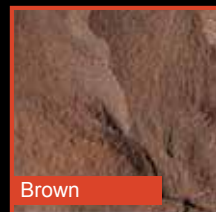
885 Coach Light



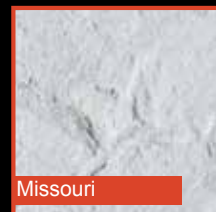
886 Outlet Cover



Appalachian



Brown



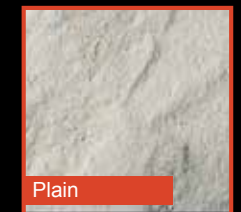
Missouri



Mt Rundle



Pennsylvania



Plain

# Other Variations

## Fieldstone

---

A medley of smooth and rough textures gives this pattern the distinctive look of natural rock reminiscent of stones found on plowed farmland.

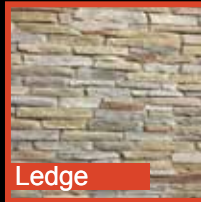


Kentucky

## Promenade Blend

---

Promenade Blend is a 50/50 mix of Kentucky and Pennsylvania. It is available in Ledge, Stack and Rubble Patterns

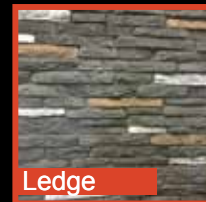


Ledge

## Rundle Blend

---

Rundle Blend is 50/50 mix of Mt Rundle and White Cap to create unique and striking appearance. Available in Ledge, Stack and Rubble Patterns



Ledge

## Palos Verde

---

The slightly textured face of this pattern forms an indiscriminate medley suggestive of grand mosaic artwork.



Grey



Kentucky



Pennsylvania

## Castle

---

Centurion Castle is tailored to present the exquisite accents remembered in an old world style. The composed European flair of this pattern makes a statement of rich elegance



California



Grey



Pennsylvania

## Splitface

---

Centurion's Splitface pattern provides a rough-hewed appearance to comply with any structure's campaign for distinction. This random pattern comes in a variety of colors and adds an enriched posture to any setting



New England

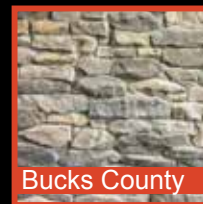


Pennsylvania

## Silhouette Ledge

---

The depth of this "rugged textured" pattern is suggestive of the irregular stone found in frontier living.



Bucks County



Catalina

## Ledge & Palos Verde Blend

---

This blend creates a very rugged and dramatic look. Available in the colors: Kentucky, Pennsylvania and Grey

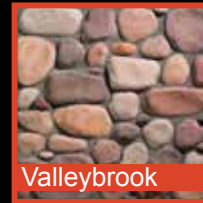


Kentucky

## River Rock

---

This pattern features water shaped stones characteristic of those found in mountainous river beds and streams. The array of colors and sizes adds suggestive warmth to any installation.



Valleybrook



Desert Rust



## OUR STORY

For over 25 years, Diamond Fireplace & Stone has partnered with Centurion Stone to provide innovative and quality manufactured stone products to the Calgary Region.

Over those years, Centurion Stone has remained a favorite with homeowners, contractors, and architects. Diamond works with the public as well as several of Calgary's most prestigious home builders to provide Centurion stone products and installation services.

With our 5000+ sqft. showroom, we aspire to give you a well informed, comfortable shopping experience. We are a major supplier and installer of gas, wood, and electric fireplaces and stoves from some of the industry's top manufacturer's.

Phone: 403.273.0000 Fax: 403.273.7333 [www.diamondfireplace.com](http://www.diamondfireplace.com)

#7, 1305 – 33rd Street NE, Calgary AB